



XEBEC SNAP Light User Guide

[Home](#) » [XEBEC](#) » XEBEC SNAP Light User Guide 

XEBEC SNAP Light User Guide



Contents

1 SNAP LIGHT OVERVIEW

- 1.1 What's Included
- 1.2 Functionality

2 SET IT UP

- 2.1 Using the Snap Light
- 2.2 Attach
- 2.3 Plug
- 2.4 Snap

3 TECH SPECS

4 PRODUCT SAFETY

- 4.1 General Safety & Handling

5 FCC COMPLIANCE

6 WARRANTY

7 What Does This Warranty Cover?

8 How Long Does The Coverage Last?

9 Exclusions and Limitations; What Does the Warranty Not Cover?

- 9.1 Documents / Resources

- 9.1.1 References

- 9.2 Related Posts

SNAP LIGHT OVERVIEW

What's Included

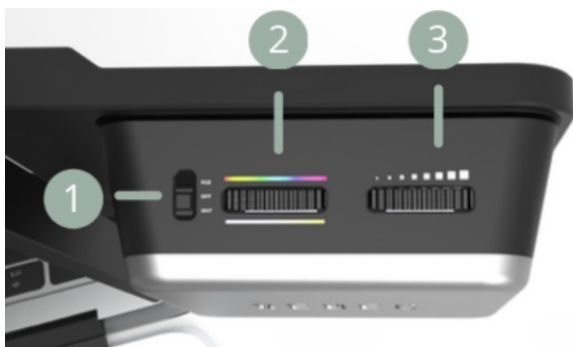
Snap Light

* Snap Bracket sold separately, required for use

Functionality

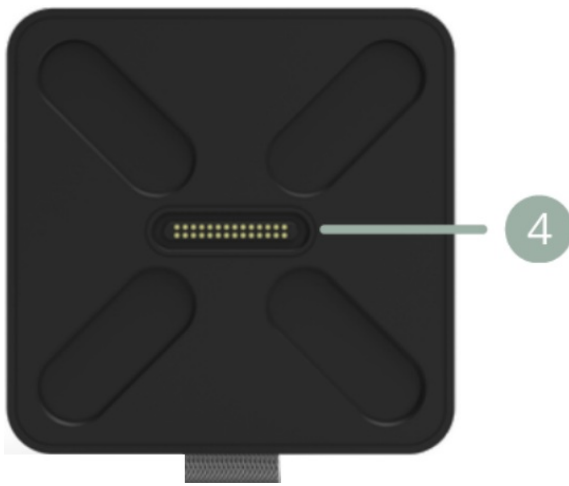
1. RGB /off / white light mode toggle switch
2. Color / temperature adjustment wheel
3. Brightness adjustment wheel Back

Top



4. Xebec Snap Connection

Back



SET IT UP

Using the Snap Light

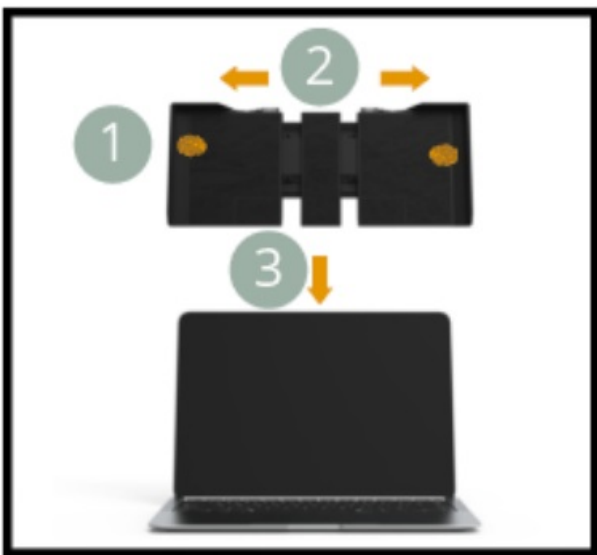
Attach the Snap Light to your Snap Bracket directly, or via the Stack-up Mount (sold separately).



[Scan here for more setup resources](#)

Attach

1. Grab the Snap Bracket and place your thumbs on either side.
2. Expand the Bracket to the width of your laptop screen.
3. Place the Bracket over the back of the laptop screen.



4. Slowly release, allowing the Bracket to hug the edges and sit on top of your laptop screen.



5. Release and extend the kickstand for extra support if needed.

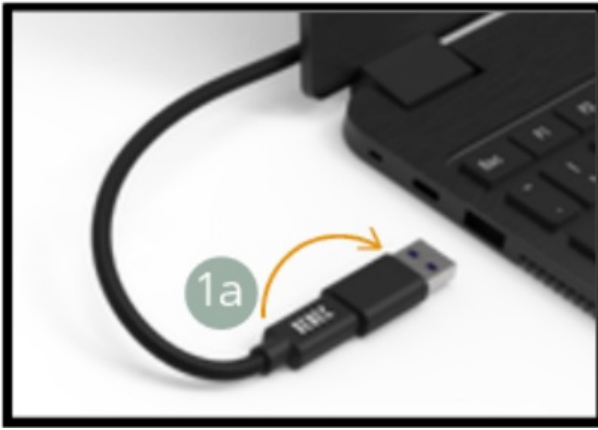


Plug

1. Remove the cable from the cable head holster on whichever side you want to use the Snap Light.

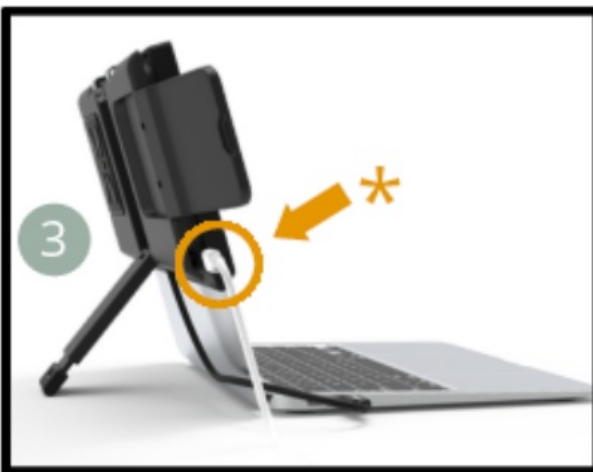


a. If you're using a USB-A port on your laptop for this cable, attach the USB-C to USB-A adapter.



(a)

2. Plug the cable into your laptop.
3. If this port is used to charge your laptop, plug your laptop charger into the pass-through charging port on the Bracket.



Pass-through charging ports are located on both sides

- If you're only using one Snap Bracket wing with your setup, you must use the pass-through charging port on the same side.

Snap

1. Rotate the left or right Bracket wing from behind the Bracket, depending on which cable you plugged into your laptop.



2. The X-shaped Xebec Snap Connection on the back of the Light will snap on to the front of the wing **(2b)**.



(2b)



3. Use the switch to toggle between off, RGB, and white light mode.
4. Use the adjustment wheels to choose your **(a)** color or temperature and **(b)** brightness level.



TECH SPECS

Dimensions: 2.7" x 2.7" x 0.9"

Product Weight: 2.5 oz **Luminosity:** Up to 200 Lumens

Color: Adjustable color across the standard RGB spectrum

White Color: Adjustable 2500K – 6500K

Need Additional Help?

Scan the QR code to access our Support Center at www.thexebec.com/troubleshoot



Need 1:1 help? Contact us at www.thexebec.com/contact for email support or to set up a support call.

Want to be featured? Tag us on social media @thexebec with your favorite shot using the Xebec Snap!

Use the hashtags #Xebec and #FreeYourself

PRODUCT SAFETY

General Safety & Handling

Carefully review each step in this user manual as well as the online documentation before setting up your Xebec Snap Light. Use the product as directed in this manual to avoid damage. Attempting to connect the product using third party cables or other connection types rather than the Snap Bracket may cause damage to your product.

If any part is broken or damaged, do not attempt to fix yourself, as this will void your warranty. Instead, please email us at thexebec.com/contact.

Store the Xebec Snap Light in appropriate conditions, avoiding exposure to moisture, dust, and extreme heat or cold. Please use caution when storing the Xebec Snap Light and avoid putting excessive amounts of pressure or weight on the product.

In the event that there is any liquid spilled on the product, ensure it is removed from the Bracket immediately and dry the entire product off with a dry soft towel. Wait for it to dry entirely before using again. To avoid an electric shock, unplug from the Bracket prior to cleaning. Only clean with a soft, dry, lint-free cloth.

FCC COMPLIANCE

This part complies with Part 15 of the FCC Rules.

Operation is subject to the following two conditions:

1. This device may not cause harmful interference.
2. This device must accept any interference received, including interference that may cause undesired operation.

This device has been tested and found to comply with the limits for a Class B digital device pursuant to Part 15 of the FCC Rules. These limits are designed to provide reasonable protection against harmful interference in a residential installation.

This device generates, uses, and can radiate radio frequency energy and, if not installed and used in accordance with the instructions, may cause harmful interference to radio communications.

However, there is no guarantee that interference will not occur in a particular installation.

If this device does cause harmful interference to radio or television reception, which can be determined by turning the device off and on, the user is encouraged to try to correct the interference by one or more of the following

measures:

- Reorient or relocate the receiving antenna.
- Increase the separation between the device and receiver.
- Connect the device into an outlet on a circuit different from that to which the receiver is connected.
- Consult the dealer or an experienced radio/television technician for help.

WARRANTY

Limited Warranty gives You specific legal rights, and You may have other rights which vary from country to country or state to state. The Limited Warranty can also be found online at www.thexebec.com.

We warrant that during the warranty period, the Product (defined as products sold by Xebec, limited to “Snap Light”) will be free from defects in manufacturing, materials and workmanship under normal use for the Warranty Period (as defined below), subject to conditions contained in this limited warranty. We do not warrant, and are responsible for, any laptop or other device made by anyone other than Xebec, Inc. We limit the duration and remedies of all implied warranties, including without limitation the warranties of merchantability and fitness for a particular purpose to the duration of this express limited warranty.

What Does This Warranty Cover?

This Limited Warranty covers any defects in manufacturing, material or workmanship the Product under normal use for the Warranty Period, subject to conditions contained in this limited warranty. During the Warranty Period, We will repair replace, at no charge, Products or parts of a Product that prove defective because of improper manufacturing, material or workmanship.

How Long Does The Coverage Last?

The Warranty Period is 1 year from the original date of purchase of the Product.

Exclusions and Limitations; What Does the Warranty Not Cover?

Except for the remedies expressly set forth above or to the extent restricted or prohibited by applicable law, the entire risk as to the quality and performance of the Products is with the customer, and the customer assumes the entire cost of repair should the Products prove defective following their purchase. In addition to and without limiting the generality of the foregoing disclaimers, this Limited Warranty does not, under any circumstances, cover any defects or damage due to: (a) transportation; (b) storage; (c) improper or unreasonable use or maintenance; (d) failure to follow the product instructions; (e) modifications; (f) unauthorized repair; (g) normal wear and tear or otherwise due to the normal aging of the Product; (h) cosmetic damage, including but not limited to scratches, dents and broken plastic or screen unless failure has occurred due to a defect in manufacturing, materials or workmanship; (i) damages caused by use with non-Xebec products; or (j) external causes such as accidents, abuse, or other actions or events beyond our reasonable control. If this product is returned to Xebec, Inc., this product must be insured during shipment, with the insurance and shipping charges prepaid by you. If this

product is returned uninsured, you assume all risks of loss or damage during shipment.

FOR CUSTOMERS WHO ARE COVERED BY AN APPLICABLE CONSUMER PROTECTION LAW OR REGULATION IN THEIR STATE, PROVINCE, OR COUNTRY OF PURCHASE OR RESIDENCE, THE BENEFITS TO CUSTOMER UNDER THIS LIMITED WARRANTY ARE IN ADDITION TO OTHER RIGHTS AND REMEDIES OF CUSTOMER UNDER SUCH LAWS OR REGULATIONS. SUCH BENEFITS MAY INCLUDE ADDITIONAL WARRANTIES OR RIGHTS RELATING TO THE PERFORMANCE OF THE PRODUCT AND REMEDIES APPLICABLE IN THE EVENT OF A DEFECT. THIS LIMITED WARRANTY WILL BE INTERPRETED UNDER THE LAWS OR REGULATIONS THAT APPLY TO CUSTOMER IN ANY STATE, PROVINCE, OR COUNTRY, AND ANY PROVISION OF THIS LIMITED WARRANTY THAT CONFLICTS WITH ANY SUCH CUSTOMER RIGHTS OR BENEFITS IS NOT APPLICABLE TO CUSTOMERS COVERED BY SUCH LAW OR REGULATION, SO THE EXCLUSIONS AND LIMITATIONS SET OUT IN THIS LIMITED WARRANTY MAY NOT APPLY, OR MAY NOT FULLY APPLY, TO CUSTOMER. Warranty Disclaimers EXCEPT AS EXPRESSLY SET FORTH ABOVE, EACH PRODUCT IS PROVIDED SOLELY ON AN "AS IS" BASIS AND WE MAKE NO OTHER WARRANTIES OF ANY KIND.


TO THE MAXIMUM EXTENT PERMITTED BY APPLICABLE LAW, WE SPECIFICALLY DISCLAIM AND EXCLUDE ALL OTHER WARRANTIES, WHETHER EXPRESS, IMPLIED OR STATUTORY, INCLUDING, WITHOUT LIMITATION, ANY IMPLIED WARRANTIES OF NON-INFRINGEMENT, QUIET ENJOYMENT, MERCHANTABILITY OR FITNESS FOR A PARTICULAR PURPOSE. IF SUCH DISCLAIMER OF ANY IMPLIED WARRANTY IS NOT PERMITTED BY LAW, THE DURATION OF SUCH IMPLIED WARRANTY IS LIMITED TO THE DURATION OF THE WARRANTY PERIOD APPLICABLE TO THE PRODUCT AS SET FORTH ABOVE. SOME STATES, PROVINCES AND COUNTRIES DO NOT ALLOW LIMITATIONS ON HOW LONG AN IMPLIED WARRANTY LASTS, SO THE ABOVE LIMITATION MAY NOT APPLY TO CUSTOMER. IF APPLICABLE LAW SPECIFIES A MINIMUM WARRANTY PERIOD THAT IS LONGER THAN THE APPLICABLE WARRANTY PERIOD SET FORTH IN THIS LIMITED WARRANTY, THEN THE APPLICABLE WARRANTY PERIOD FOR PRODUCTS SUBJECT TO SUCH APPLICABLE LAW WILL BE INFORMED TO THE MINIMUM PERIOD SO REQUIRED.

THIS LIMITED WARRANTY GIVES CUSTOMER SPECIFIC LEGAL RIGHTS AND CUSTOMER MAY ALSO HAVE OTHER RIGHTS WHICH VARY FROM STATE TO STATE AND PROVINCE TO PROVINCE AND FROM COUNTRY TO COUNTRY. Limitation of Liability IN NO EVENT, UNDER ANY CAUSE OF ACTION OR THEORY OF LIABILITY, WILL WE, OUR DISTRIBUTORS, OR SUPPLIERS BE LIABLE TO CUSTOMER OR ANY THIRD PARTY FOR ANY INDIRECT, INCIDENTAL, CONSEQUENTIAL, SPECIAL, EXEMPLARY OR PUNITIVE DAMAGES, OF ANY NATURE WHATSOEVER, ARISING OUT OF THE USE OF OR INABILITY TO USE ANY PRODUCT, INCLUDING, WITHOUT LIMITATION, PROPERTY DAMAGE, LOSS OF VALUE OF THE PRODUCT OR ANY THIRD PARTY PRODUCTS THAT ARE USED IN OR WITH THE PRODUCT, OR LOSS OF USE OF THE PRODUCT OR ANY THIRD PARTY PRODUCTS THAT ARE USED IN OR WITH THE PRODUCT, EVEN IF WE HAVE BEEN ADVISED OF THE POSSIBILITY OF SUCH DAMAGES. WITHOUT LIMITING THE FOREGOING, CUSTOMER UNDERSTANDS AND AGREES THAT WE HAVE NO LIABILITY FOR ANY DAMAGE OR DESTRUCTION TO CUSTOMER ELECTRONICS DEVICES OR OTHER PERSONAL PROPERTY THAT ARE USED WITH THE PRODUCT, INCLUDING, WITHOUT LIMITATION, LAPTOPS, OR OTHER HANDHELD DEVICES, OR ANY LOSS OF DATA CONTAINED IN THE FOREGOING DEVICES. NOTWITHSTANDING ANY DAMAGES THAT CUSTOMER MIGHT INCUR FOR ANY REASON WHATSOEVER (INCLUDING, WITHOUT LIMITATION, ALL DAMAGES REFERENCED HEREIN AND ALL DIRECT OR GENERAL DAMAGES IN CONTRACT, TORT (INCLUDING NEGLIGENCE) OR OTHERWISE), THE ENTIRE AGGREGATE LIABILITY OF XEBEC AND ANY OF ITS DISTRIBUTORS AND/OR SUPPLIERS WILL BE LIMITED TO THE AMOUNT ACTUALLY PAID BY CUSTOMER FOR ANY PRODUCT GIVING RISE TO LIABILITY.

SOME STATES, PROVINCES, COUNTRIES DO NOT ALLOW THE EXCLUSION OR LIMITATION OF INCIDENTAL OR CONSEQUENTIAL DAMAGES, SO THE ABOVE LIMITATION OR EXCLUSION MAY NOT APPLY TO CUSTOMER. THE LIMITATIONS OF LIABILITY SET FORTH ABOVE WILL APPLY TO THE MAXIMUM EXTENT PERMITTED UNDER APPLICABLE LAW.



Documents / Resources

	<p>XEBEC SNAP Light [pdf] User Guide UPDATE_11_14_24, DAGPuj7vUb8, BADpyfLXpXI, SNAP Light, SNAP, Light</p>
--	---

References

- [User Manual](#)

Manuals+, Privacy Policy

This website is an independent publication and is neither affiliated with nor endorsed by any of the trademark owners. The "Bluetooth®" word mark and logos are registered trademarks owned by Bluetooth SIG, Inc. The "Wi-Fi®" word mark and logos are registered trademarks owned by the Wi-Fi Alliance. Any use of these marks on this website does not imply any affiliation with or endorsement.