



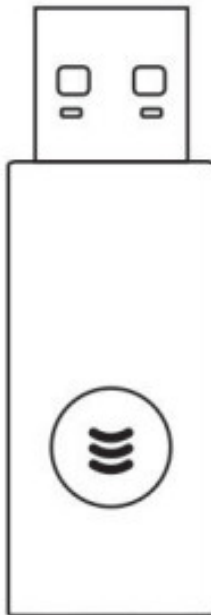
XBOX X-One Controller Wireless Adapter for Window 10 PC Instruction Manual

[Home](#) » [XBOX](#) » XBOX X-One Controller Wireless Adapter for Window 10 PC Instruction Manual 



XBOX

X-One Controller Wireless Adapter for Window 10 PC
Instruction Manual



Contents

1 PREFACE

2 PRODUCT FEATURES

3 PART NAME

4 USAGE METHOD

5 Method 1

6 Method 2

7 Method 3

8 SPECIFICATIONS

9 CONTACT INFORMATION

10 Documents / Resources

11 Related Posts

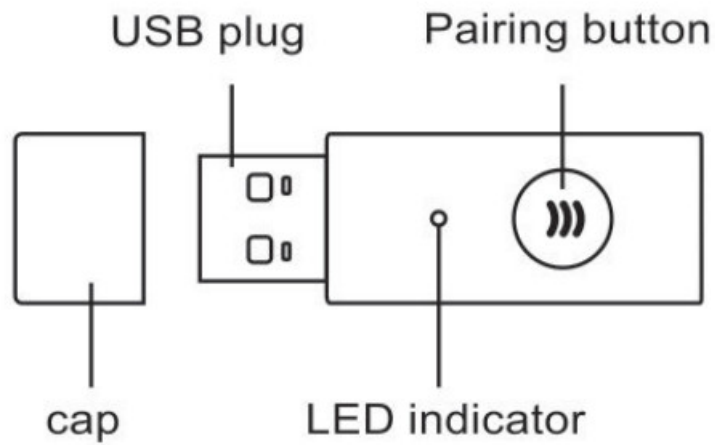
PREFACE

- Thank you for choosing our product. For bringing you with pleasant gaming experience, please read this user guide and all safety instructions carefully to ensure safe and proper use
- The instructions in this user guide are based on the default settings of the device
- All pictures, statements, and text information in this guide are for references only, actual product prevails, Updates are subject to change without prior notice and it will be edited in a new version guide, we reserve the right of final interpretation
- Please don't store this product in a damp or high-temperature place
- Do not knock, beat, pierce or try to disintegrate this product so as not to damage it unnecessarily
- Don't use this product near fire or heat sources
- Unauthorized or non-professional personnel are not allowed to disassemble this product, otherwise, it won't be in the scope of an after-sales warranty

PRODUCT FEATURES

1. Only applicable to the PC with window 10 system, please note! It can't work with Windows 7/8 or other systems PC.
2. Up to 8 controllers can be connected at the same time (the games need to support)
3. Can compatible with all the original X-ONE controllers (Not applicable to XBOX 360 controllers or other controllers)

PART NAME

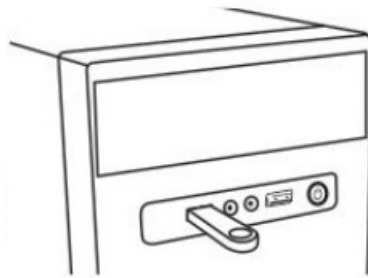


USAGE METHOD

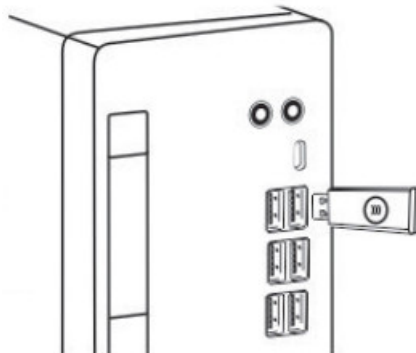
The following three operation methods are available (any operation method can be used)

Method 1

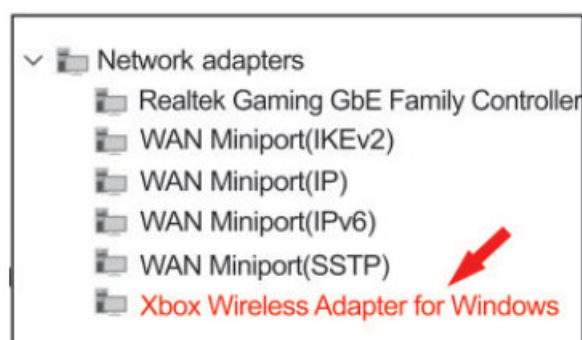
1. Insert the U disk in the package into the computer, select the driver corresponding to the system and install it (win10 64/32bit driver).



2. Insert the wireless receiver into the USB interface of the PC (support USB2 0/3.0)

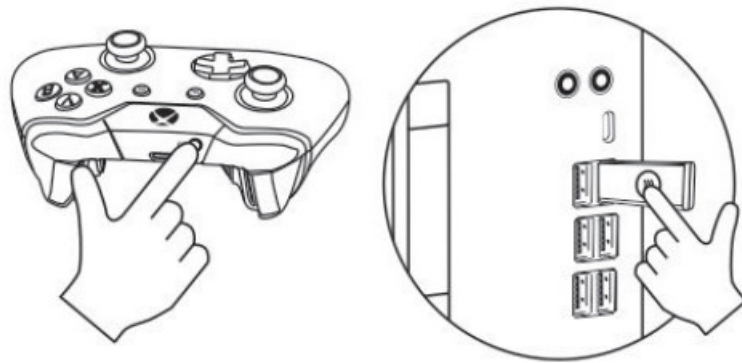


The method of confirming the driver has been installed on the PC. Right-click – Manage Device Manager. If this icon is displayed, as the picture show, the driver has been successfully installed and it can be used normally.



NOTE:

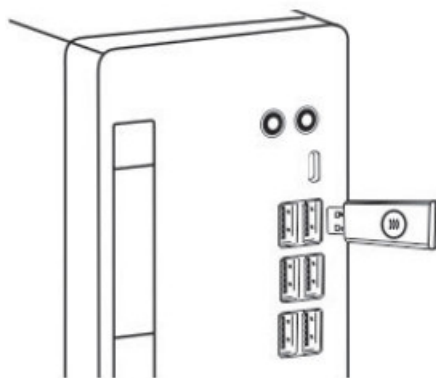
1. The wireless receiver only supports the WIN10 system, it cannot be used on the WIN7/8 system.
2. After the receiver is plugged into the device, wait for about 3 seconds (device identification), and then press the pairing button, otherwise, the lights may flash randomly or the controller cannot be connected.
3. After installing the battery into the controller, press and hold the pairing button on the receiver for about 2 seconds, and then the green light flashes Turn on the power button of the XBOX ONE wireless controller and press and hold the top pairing button for 2 seconds The white light on the controller starts to flash quickly. After the pair is successful, the white light on the controller is on and the green light on the wireless receiver is on You can play games on the device.

**NOTE:**

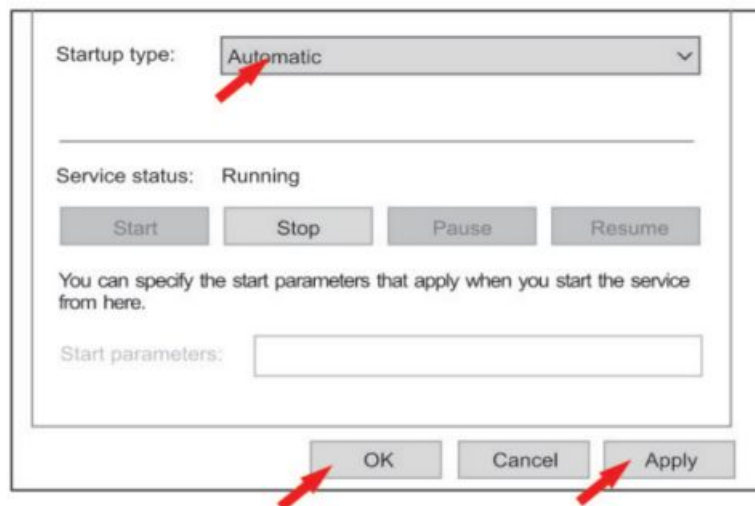
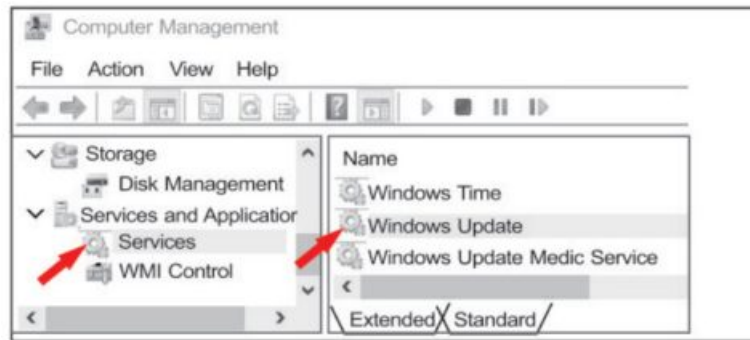
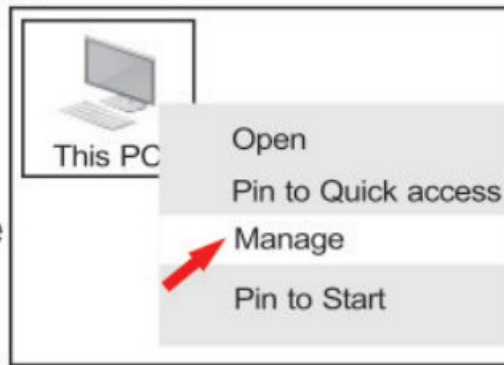
The controller will automatically shut down if there is no operation for about 15 minutes, the connection will be disconnected and the green light of the wireless receiver will go out. The connected controller only needs to turn on the controller power button for 2 seconds to automatically pair and connect.

Method 2

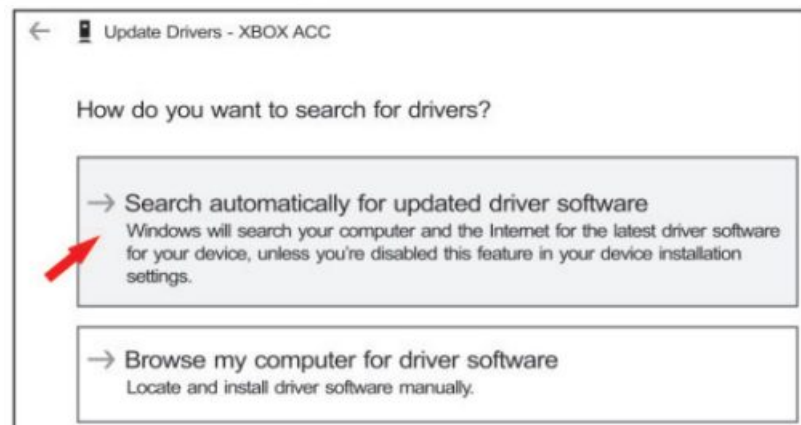
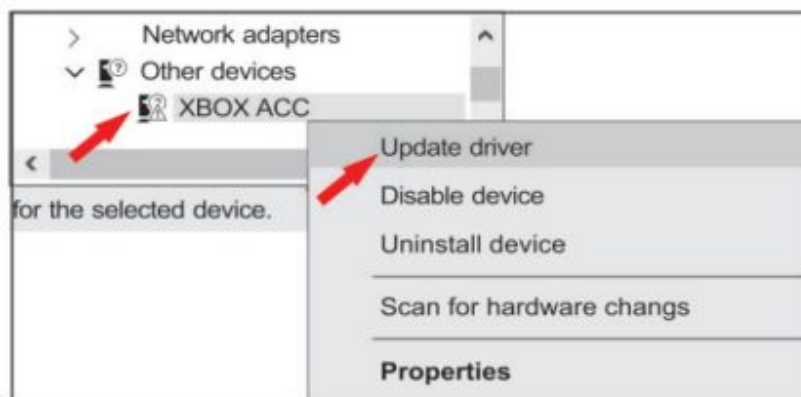
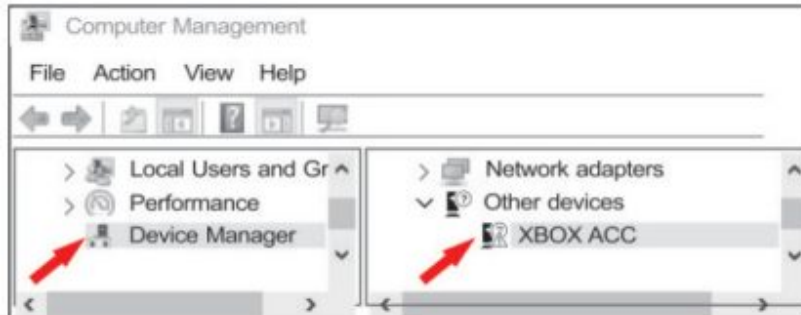
1. Insert the wireless receiver into the USB interface of the PC (support USB2 0/ 3.0), And wait for the automatic search and installation of the driver If the automatic installation is successful, it means that the controller can be connected and used normally: If the installation is not successful. please follow the steps below.



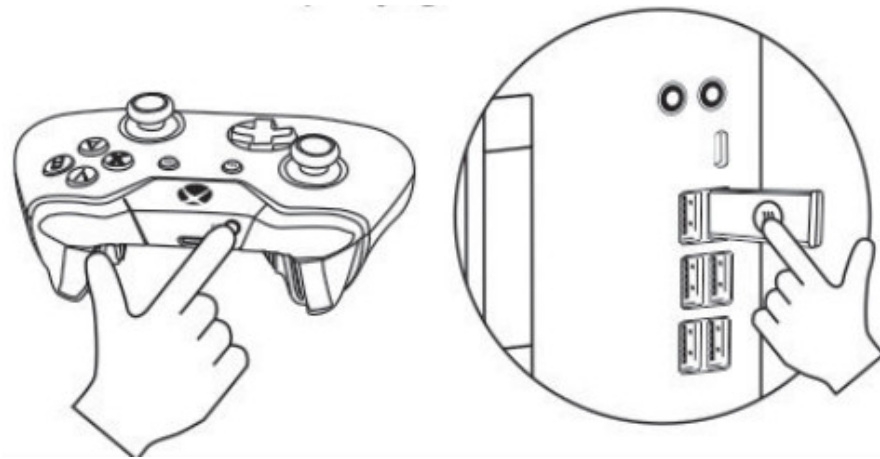
2. Select "This PC, right click – Manage- Services – Windows Update – Startup type choose "Automatic" – Apply – click "OK"



3. Select "This PC", right click – Manage – Device Manager – XBOX ACC (there's an exclamation icon), right click – choose " Update driver" . Search automatically for updated driver software – Then it will appear " Windows has successfully updated your drivers" – Then the updating is successful.

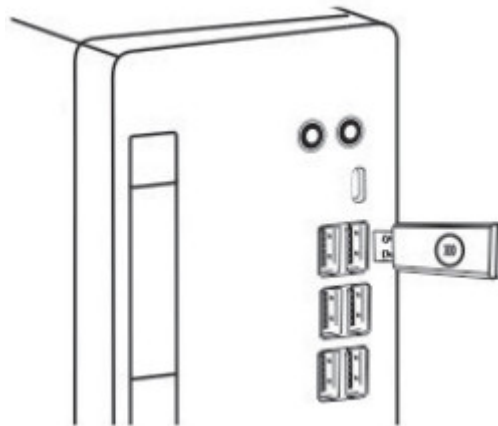


4. Connect XBOX One wireless controller. (Same as step 3 of method 1)



Method 3

1. Insert the wireless receiver into the USB interface of the PC (support USB2.0/3.0);



2. Download the driver from the official website

1. Open the browser and enter

<https://www.yccteam.com/pages/download>

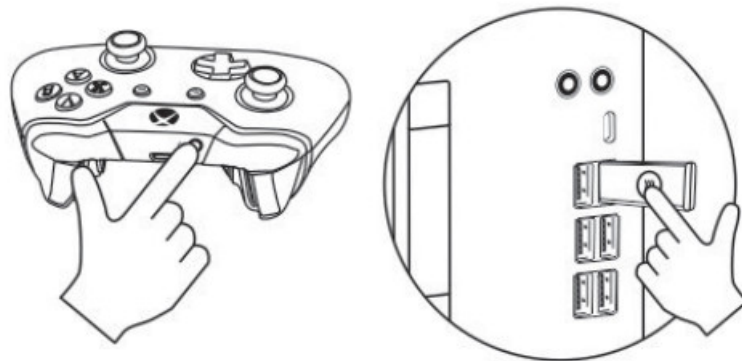
2. Click' **5. Wireless adapter driver for The X-One controller for win10** ”

Download and install

the driver

WIN10 64/32 bit driver xbox wireless 104 61 x64 1012 / microsoft xboxwl 213423 7_32_16

3. Connect XBOX One wireless controller. (Same as step 3 of method 1)



SPECIFICATIONS

Product name:	X-BOX wireless adapter
Product size:	56 218 59 6mm
Product weight:	9g
Colour	Black
Use platform:	wind0sw10
Receiving range:	9m

CONTACT INFORMATION

For support or general help questions please contact

E-mail: ycc@yccteam.com

website: www.yccteam.com


This device complies with part 15 of the FCC Rules. Operation is subject to the following two conditions: (1) this device may not cause harmful interference, and (2) this device must accept any interference received, including interference that may cause undesired operation. Any changes or modifications not expressly approved by the party responsible for compliance could void the user's authority to operate the equipment.

NOTE: This equipment has been tested and found to comply with the limits for a Class B digital device, pursuant to Part 15 of the FCC Rules. These limits are designed to provide reasonable protection against harmful interference in a residential installation. This equipment generates, uses and can radiate radio frequency energy and, if not installed and used in accordance with the instructions, may cause harmful interference to radio communications. However, there is no guarantee that interference will not occur in a particular installation. If this equipment does cause harmful interference to radio or television reception, which can be determined by turning the equipment off and on, the user is encouraged to try to correct the interference by one or more of the following measures:

- Reorient or relocate the receiving antenna.
- Increase the separation between the equipment and receiver.
- Connect the equipment into an outlet on a circuit different from that to which the receiver is connected.
- Consult the dealer or an experienced radio/TV technician for help.

The device has been evaluated to meet general RF exposure requirement. The device can be used in portable exposure condition without restriction

Documents / Resources

	<p>XBOX X-One Controller Wireless Adapter for Window 10 PC [pdf] Instruction Manual YCC-XB073, YCCXB073, 2A5DUYCC-XB073, 2A5DUYCCXB073, X-One Controller Wireless Adapter for Window 10 PC, X-One, Controller Wireless Adapter for Window 10 PC</p>
---	---