



XBOX Wireless Replacement Controller User Guide

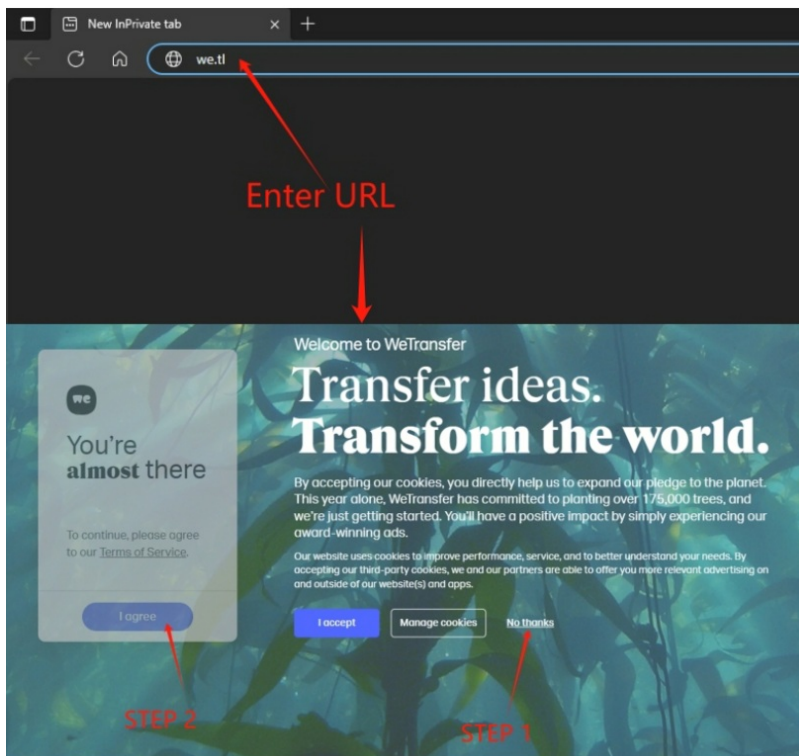
[Home](#) » [XBOX](#) » XBOX Wireless Replacement Controller User Guide 

XBOX Wireless Replacement Controller User Guide

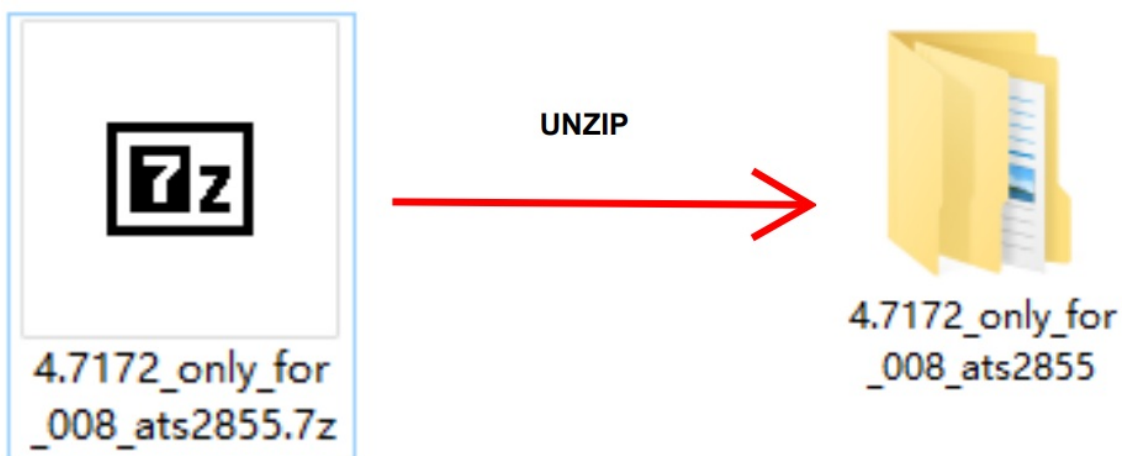
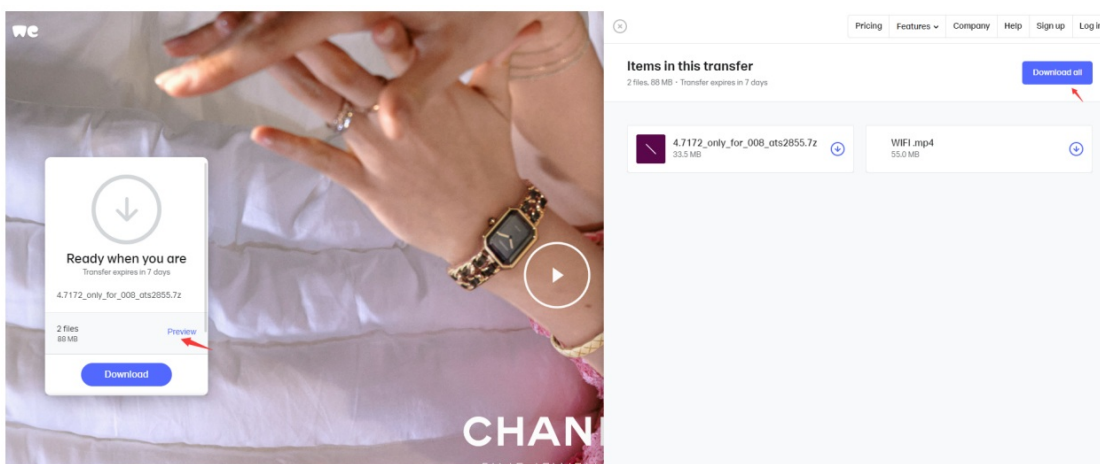
Contents

- 1 [Enter URL](#)
- 2 [Download](#)
- 3 [Open the application: Demo SDK](#)
- 4 [Documents / Resources](#)
 - 4.1 [References](#)

Enter URL



Download



Open the application: Demo SDK

File Path: Adu Install → bin → DemoSDK.exe



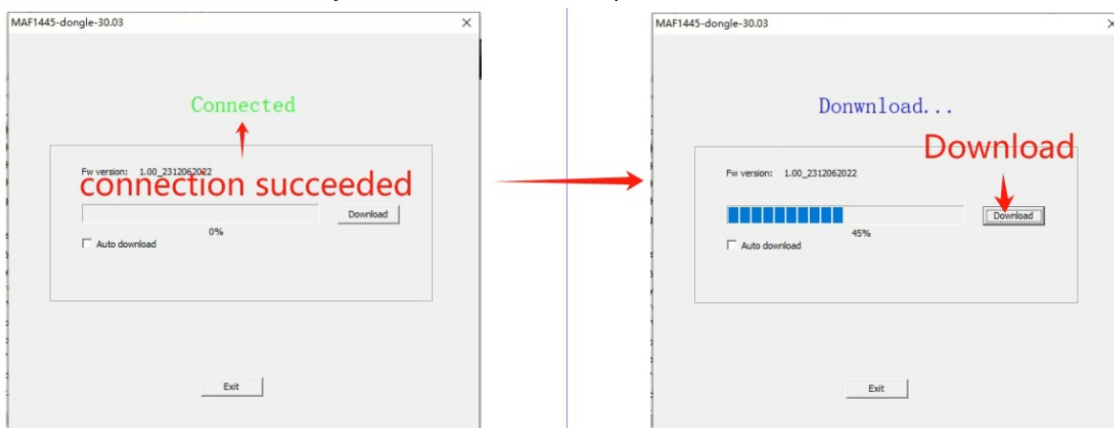
Step 1: Connect the cable to the computer

Step 2: Press and hold the Y key

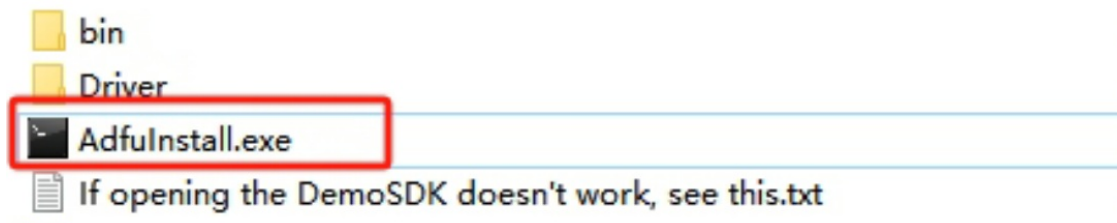
Step 3: Plug in the USB-C cable



The controller is successfully connected to the computer, click to download



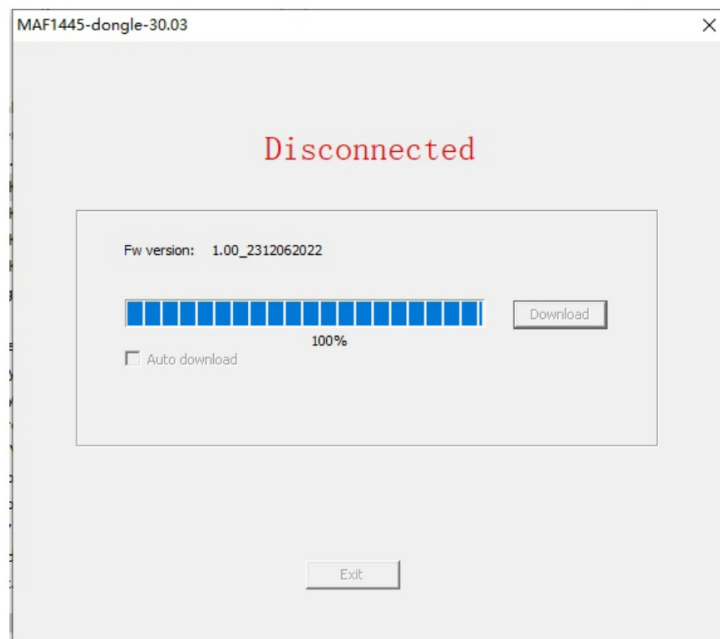
The program can not be recognized, first double-click "AdfulInstall.exe", and then upgrade!



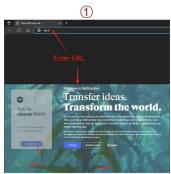
Upgrade Successful

Note!!!

After upgrading, first connect the Xbox console with cable before you can subsequently connect to the Xbox console wirelessly normally!



Documents / Resources



②
Download



③



Open the application: DemoSDK.

File Path: Activated -> Run -> DemoSDK.exe



④

Step 1: Connect the cable to the computer.
Step 2: Press and hold the 'X' key.
Step 3: Plug in the USB-C cable.



⑤



Note!!!

After upgrading, the controller will be connected to the Xbox console via wireless technology.



[XBOX Wireless Replacement Controller \[pdf\] User Guide](#)
Wireless Replacement Controller, Replacement Controller, Controller

- [User Manual](#)

[Manuals+](#), [Privacy Policy](#)