



xavax 95331 Lint Shaver Instruction Manual

[Home](#) » [xavax](#) » xavax 95331 Lint Shaver Instruction Manual 

Contents

- 1 [xavax 95331 Lint Shaver](#)
- 2 [Product Information](#)
- 3 [Product Usage Instructions](#)
- 4 [Operating instruction](#)
- 5 [Supplied package](#)
- 6 [Safety instructions](#)
- 7 [Setup](#)
- 8 [Care and maintenance](#)
- 9 [Warranty disclaimer](#)
- 10 [Technical data](#)
- 11 [Documents / Resources](#)
 - 11.1 [References](#)
- 12 [Related Posts](#)



xavax 95331 Lint Shaver



Product Information

Specifications

- **Weight:** 112g
- **Power supply:** 2x AA/mignon (2x 1.5V)

Product Usage Instructions

Explanation of warning symbols and notes

Warning: This symbol is used to indicate safety instructions or to draw your attention to specific hazards and risks.

Note: This symbol is used to indicate additional information or important notes.

Setup

Open the battery compartment, remove the battery contact breaker, and close the battery compartment again.

Care and Maintenance

Note: Only clean the device using the brush supplied.

Warranty disclaimer

Hama GmbH & Co KG assumes no liability and provides no warranty for damage resulting from improper installation/mounting, improper use of the product, or from failure to observe the operating instructions and/or safety notes.

FAQ (Frequently Asked Questions)

- **Q: What is the weight of the lint shaver?**

A: The weight of the lint shaver is 112g.

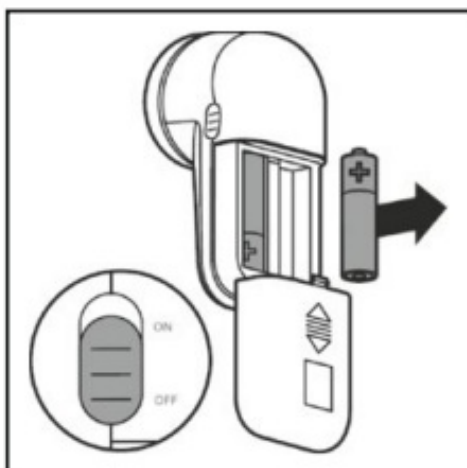
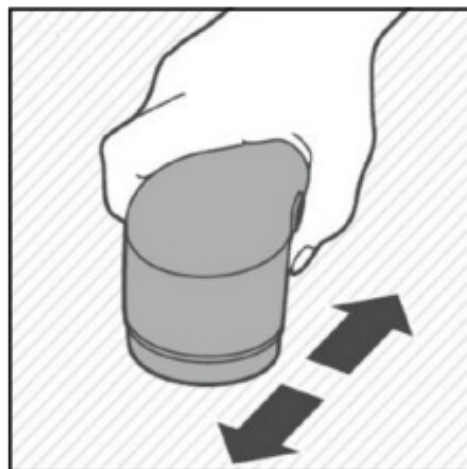
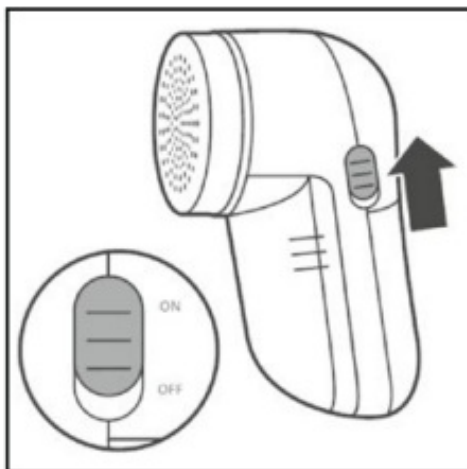
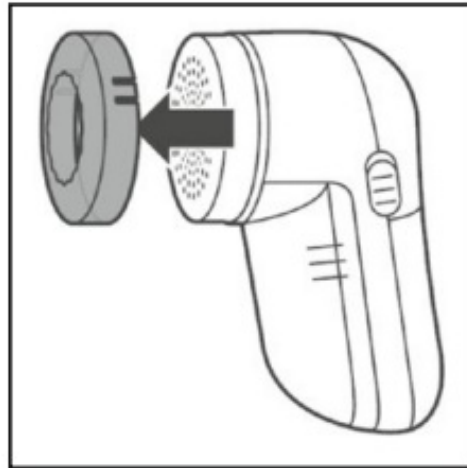
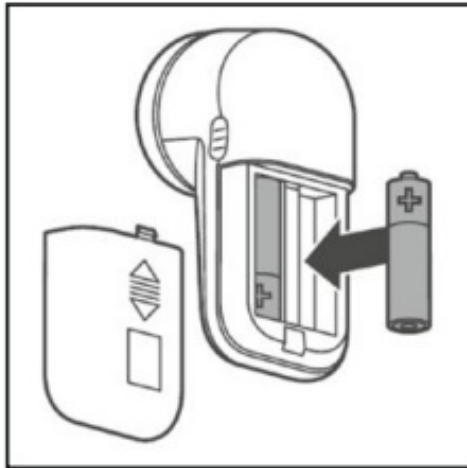
- **Q: What type of batteries does it require?**

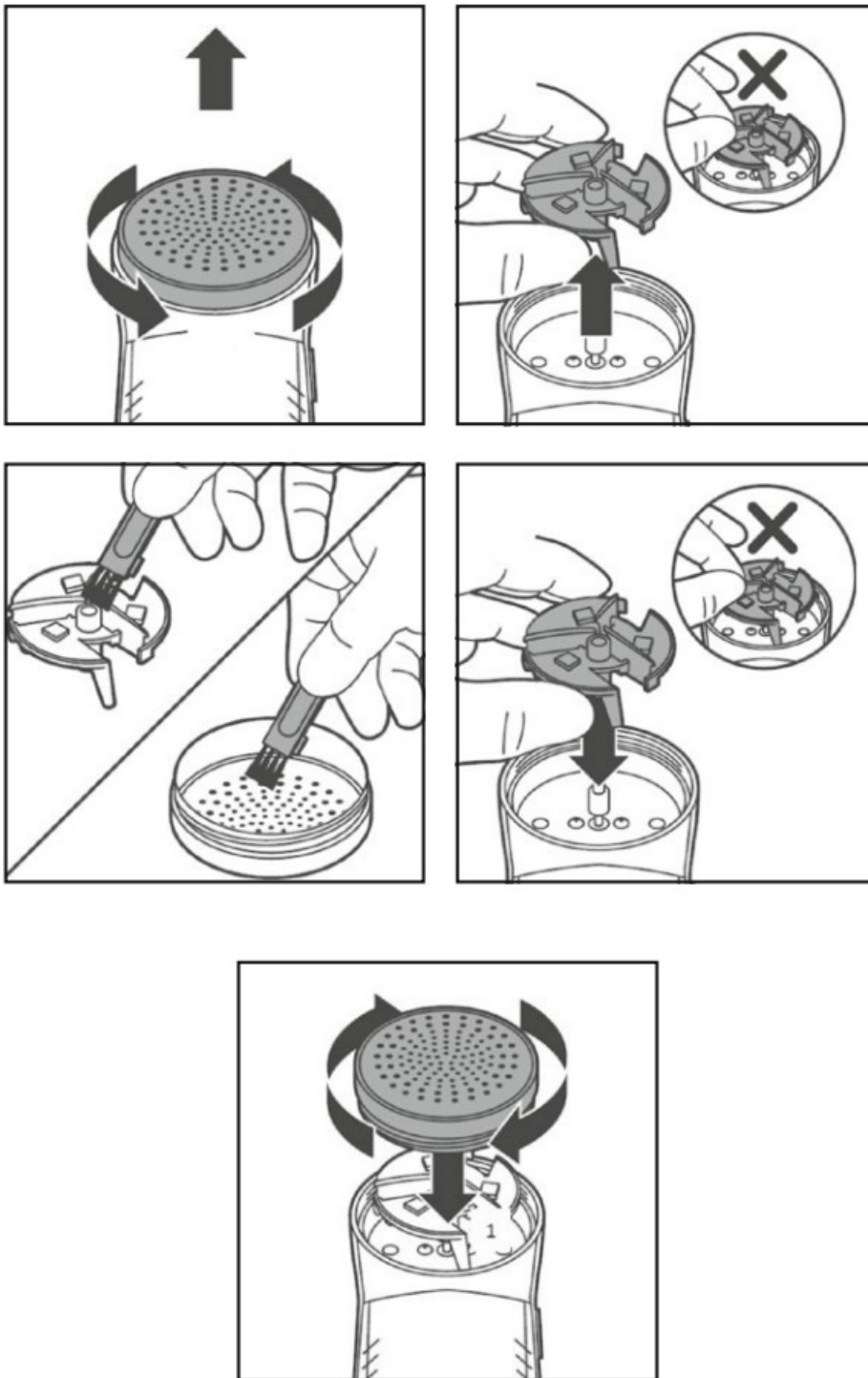
A: The lint shaver requires 2x AA/mignon batteries (2x 1.5V).

Operating instruction

Thank you for choosing a Xavax product.

Take your time and read the following instructions and information completely. Please keep these instructions in a safe place for future reference. If you sell the device, please pass these operating instructions on to the new owner.





Explanation of warning symbols and notes

Warning



This symbol is used to indicate safety instructions or to draw your attention to specific hazards and risks.

Note



This symbol is used to indicate additional information or important notes.

Supplied package

- 1 lint shaver

- 1 cleaning brush
- 1 protective cap / spacer
- 2 x AA batteries
- These operating instructions

Safety instructions

- The product is intended for private, non-commercial use only.
- Protect the product from dirt, moisture and overheating and use it in dry environments only.
- Do not drop the product and do not expose it to any major shocks.
- Do not open the device or continue to operate it if it becomes damaged.
- Dispose of packaging material immediately in accordance with the locally applicable regulations

Warning

- Only open the screw lid for cleaning.
- Do not switch the device on during cleaning and maintenance.
- Please take care to ensure an adequate safety distance between your fingers and hands and the blades when cleaning and maintaining the device.
- During use, you should ensure that no pointed objects come into contact with the blades.

Note

Only use the lint shaver for the intended purpose, i.e. the removal of lint and bobbles from clothing. Do not use it for other materials or surfaces.

- Avoid contact between the blades and delicate fabrics such as silk or lace, since they may damage them.
- Do not use the product in the immediate vicinity of heaters, other heat sources or in direct sunlight.
- As with all electrical products, this device should be kept out of the reach of children.
- Children who are aged 8 or older and people with impaired physical, sensory or mental abilities, or those who lack experience and knowledge, may use the device if they are supervised or have been trained in safe use of the device and have understood the associated dangers. Children must not play with the device. Cleaning and user maintenance must not be carried out by children without supervision.
- Only use the article under moderate climatic conditions.
- Do not attempt to service or repair the product yourself. Leave any and all service work to qualified experts.
- Do not modify the device in any way. Doing so voids the warranty.
- Do not use the product in areas in which electronic products are not permitted.

Warning – Batteries

- When inserting batteries, note the correct polarity (+ and – markings) and insert the batteries accordingly. Failure to do so could result in the batteries leaking or exploding.
- Only use batteries that match the specified type. Keep the instructions for the correct choice of batteries included with the operating instructions of devices safe for future reference.
- Before you insert the batteries, clean the battery contacts and the polarity contacts.

- Do not allow children to change batteries without supervision.
- Replace all the batteries in a set at the same time.
- Do not mix old and new batteries, or batteries of different types or from different manufacturers.
- Remove the batteries from products that are not being used for an extended period (unless these are being kept ready for an emergency).
- Do not short-circuit batteries.
- Do not charge batteries.
- Do not burn batteries or heat them up.
- Never open, damage or swallow batteries or allow them to enter the environment. They can contain toxic, environmentally harmful heavy metals.
- Remove spent batteries from the product and dispose of them without delay.
- Avoid storing, charging and using in extreme temperatures and at extremely low atmospheric pressures (such as at high altitudes).
- Ensure that batteries with damaged housings do not come into contact with water.
- Keep batteries out of the reach of children.

Setup

Open the battery compartment, remove the battery contact breaker and close the battery compartment again.



Care and maintenance

Note

Only clean the device using the brush supplied.

Warranty disclaimer

Hama GmbH & Co KG assumes no liability and provides no warranty for damage resulting from improper installation/mounting, improper use of the product or from failure to observe the operating instructions and/or safety notes.

Technical data

Weight	112g
Power supply	2x AA/mignon (2x 1.5V)

Distributed by Hama GmbH & Co KG 86652 Monheim / Germany

Service & Support

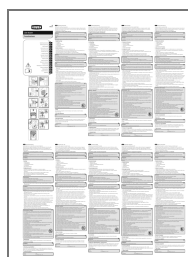
- www.xavax.eu

- +49 9091 502-0



All listed brands are trademarks of the corresponding companies. Errors and omissions excepted, and subject to technical changes. Our general terms of delivery and payment are applied.

Documents / Resources



[xavax 95331 Lint Shaver](#) [pdf] Instruction Manual
95331, 95331 Lint Shaver, Lint Shaver, Shaver

References

- [User Manual](#)