



# xavax 110232 Base Unit Frame for Large Devices Instruction Manual

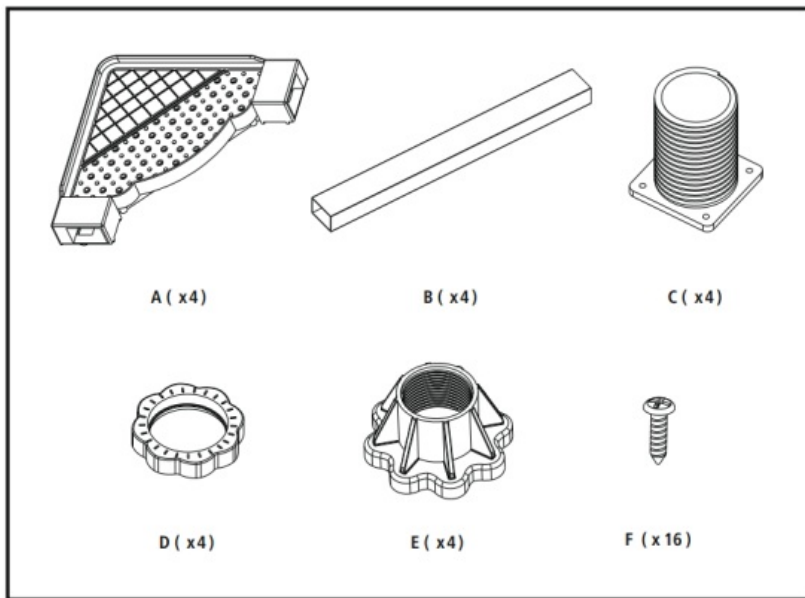
[Home](#) » [xavax](#) » xavax 110232 Base Unit Frame for Large Devices Instruction Manual 

## xavax 110232 Base Unit Frame for Large Devices Instruction Manual

### Contents

- 1 Part list
- 2 Explanation of Warning Symbols and Notes
- 3 Safety notes
- 4 Assembly
- 5 Dimensions
- 6 Mounting Instruction
- 7 Technical data
- 8 Warranty Disclaimer
- 9 Service & Support
- 10 Documents / Resources
  - 10.1 References
- 11 Related Posts

### Part list



Thank you for choosing a Xavax product. Take your time and read the following instructions and information completely. Please keep these instructions in a safe place for future reference. If you sell the device, please pass these operating instructions on to the new owner.

## Explanation of Warning Symbols and Notes

### Warning

This symbol is used to indicate safety instructions or to draw your attention to specific hazards and risks.

### Note

This symbol is used to indicate additional information or important notes

## Safety notes

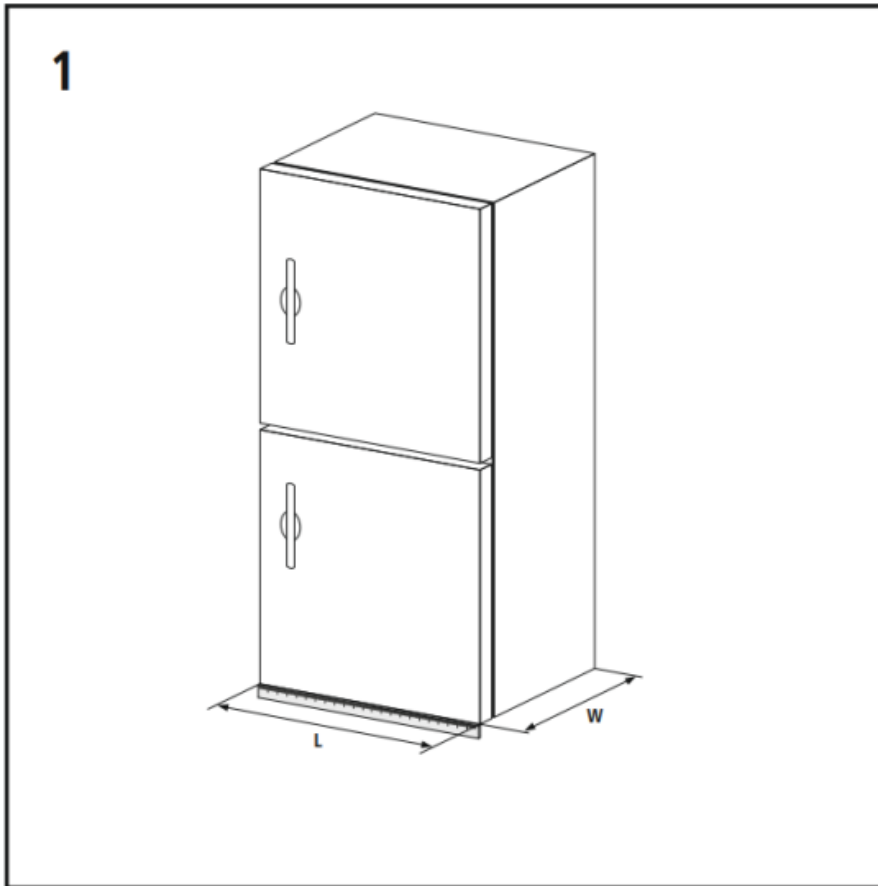
- The product is intended for private, non-commercial use only.
- Use the product for its intended purpose only.
- Children are not permitted to play with the device.
- Never apply force when using the product or during installation.
- Do not modify the product in any way.
- Once you have mounted the product and the attached load, check that they are sufficiently secure and safe to use.
- You should repeat this check at regular intervals (at least every three months).
- When doing so, ensure that the product does not exceed its maximum permitted carrying capacity and that no load exceeding the maximum permitted dimensions is attached.
- Make sure that the product is loaded symmetrically.
- During adjustment, ensure that the product is loaded symmetrically and that the maximum permitted carrying capacity is not exceeded.

### Warning

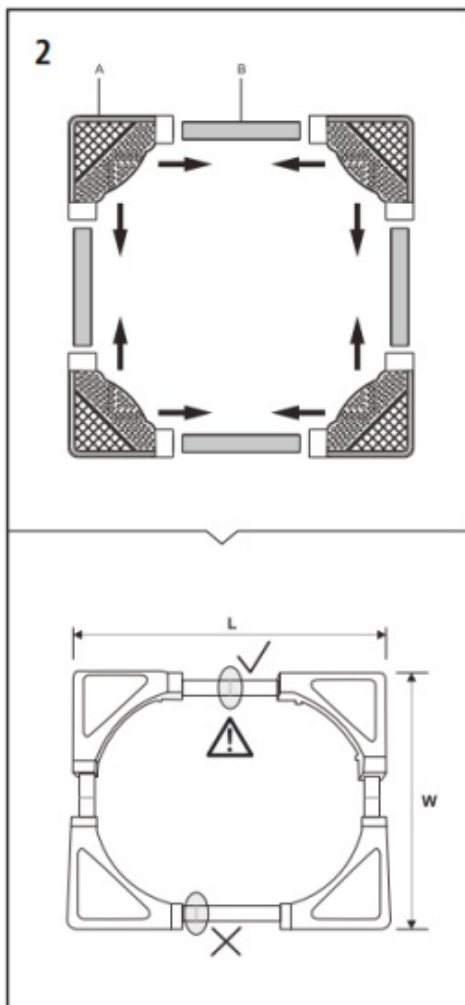
Not suitable for use with a washing machine and a dryer.

## Assembly

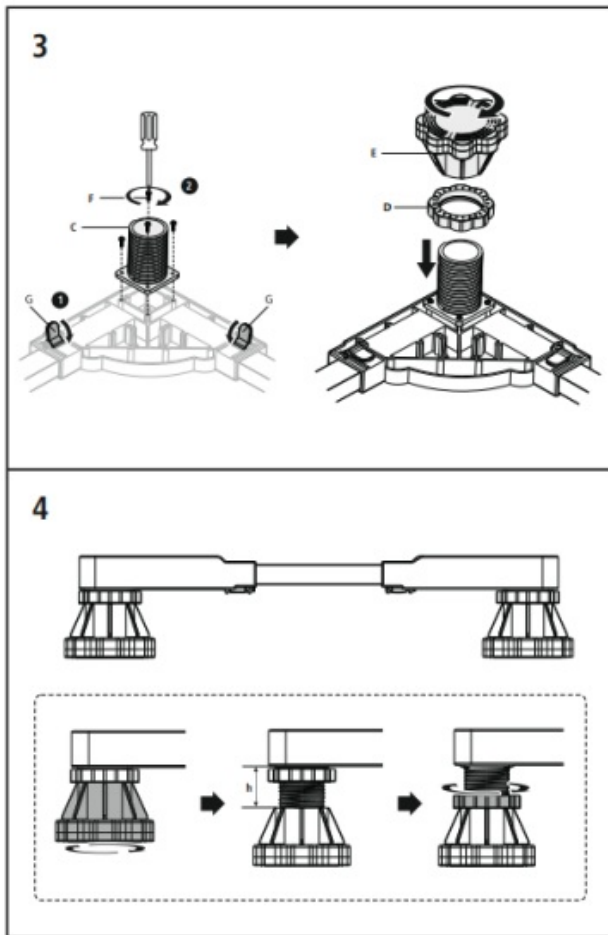
- Before assembling the transport roller, check that the assembly kit is complete and ensure that none of the parts are faulty or damaged.
- Observe the other warnings and safety instructions.
- Proceed step by step in accordance with the illustrated installation instructions **(Fig. 1 onwards)**



## Dimensions



## Mounting Instruction



#### Note

- Position all four feet of the appliance on the space provided on the base.
- Once you have adjusted the width/length, all safety catches (G) must be applied.
- After assembly, use a spirit level to precisely align the base with the household appliance on it.
- Ensure that the appliance is safe and secure with no movement, and check this each time before using the appliance.

#### Technical data

Bearing load	max. 150 kg
Width	52– 72 cm
Length	52– 72 cm

#### Warranty Disclaimer

Hama GmbH & Co KG assumes no liability and provides no warranty for damage resulting from improper installation/ mounting, improper use of the product or from failure to observe the operating instructions and/or safety notes.

## Service & Support

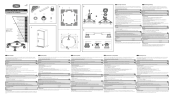


[www.xavax.eu](http://www.xavax.eu)



+49 9091 502-0

## Documents / Resources



[xavax 110232 Base Unit Frame for Large Devices](#) [pdf] Instruction Manual  
110232 Base Unit Frame for Large Devices, 110232, Base Unit Frame for Large Devices

## References

- [X Xavax - Die Starke Marke im Haushalt](#)