

xArm 6DOF Kit UNO Robotic Arm Instruction Manual

[Home](#) » [xArm](#) » xArm 6DOF Kit UNO Robotic Arm Instruction Manual 

x-arm

xArm 1S Assembly Instruction

Contents

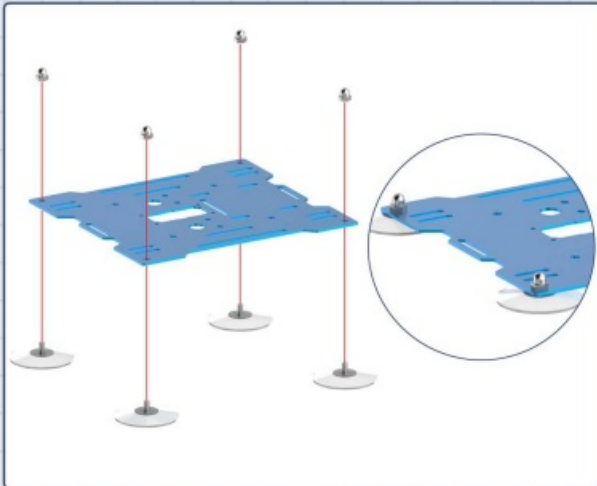
- [1 6DOF Kit UNO Robotic Arm](#)
- [2 Instruction for xArm 1s](#)
- [3 Documents / Resources](#)
 - [3.1 References](#)

6DOF Kit UNO Robotic Arm

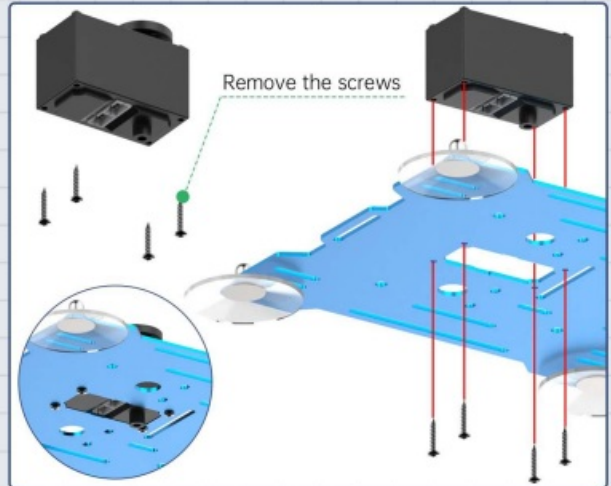
This Assembly Instruction is designed to help you quickly understand the product structure and precautions. In order to ensure the stable operation of the body, please recognize the screws, nuts, and other accessories models during the installation process.

For the assembly step video or more details, please scan the QR code at the right to get it.

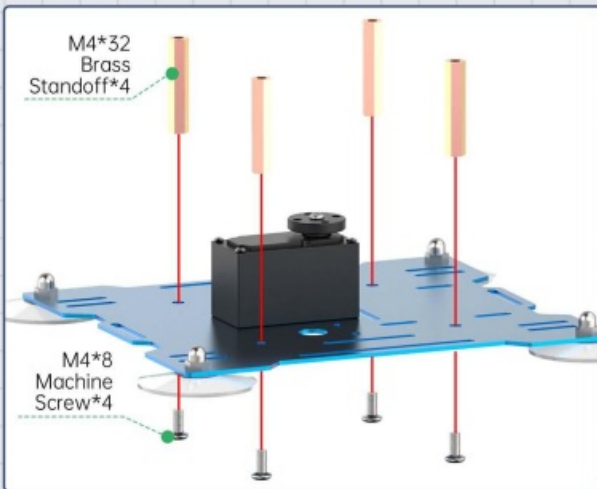
Step1



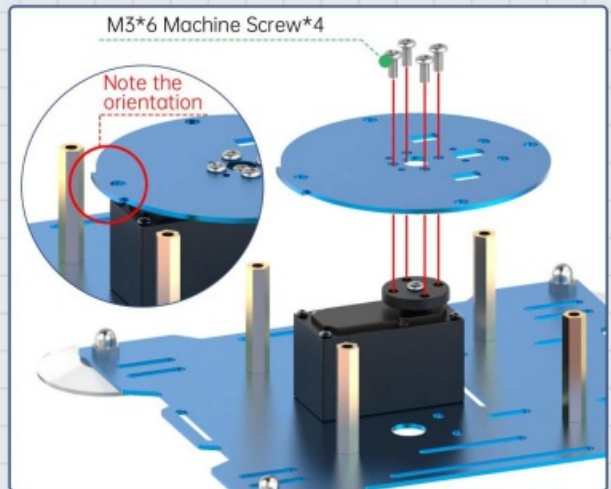
Step2



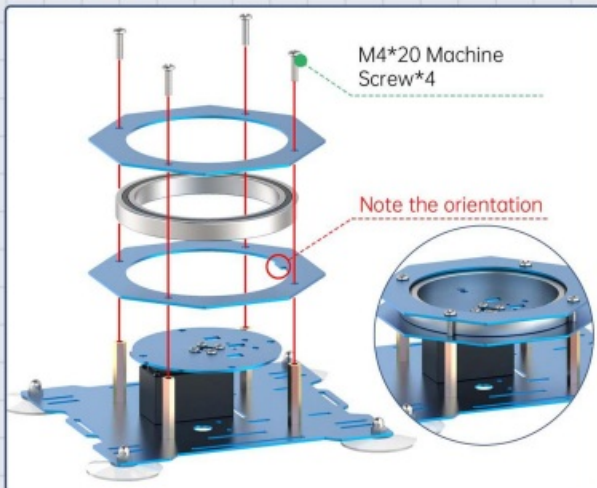
Step3



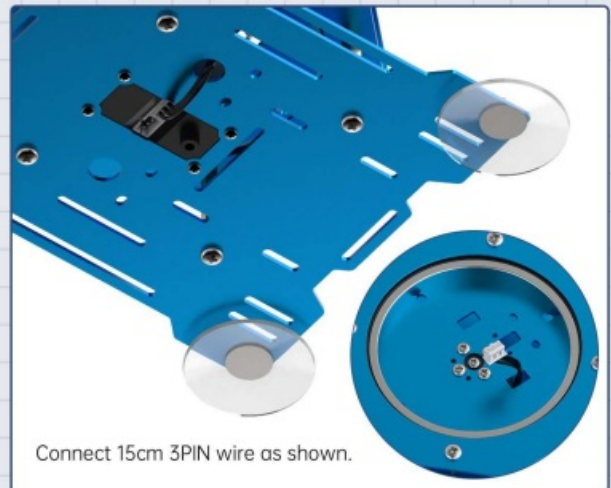
Step4



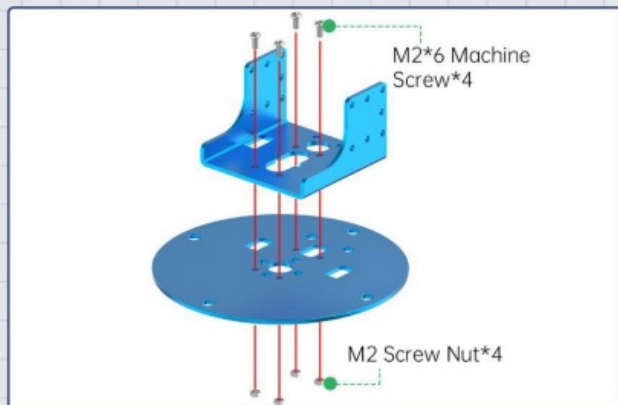
Step5



Step6



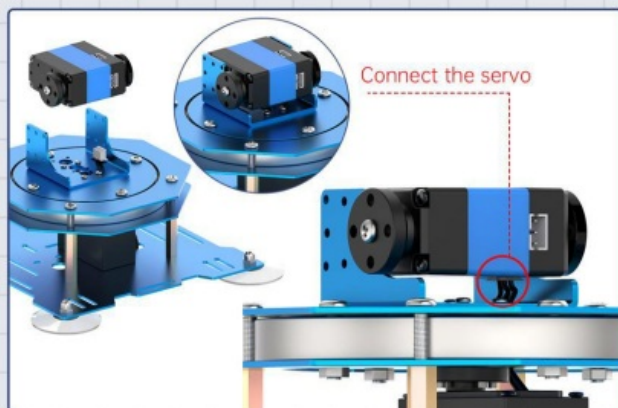
Step7



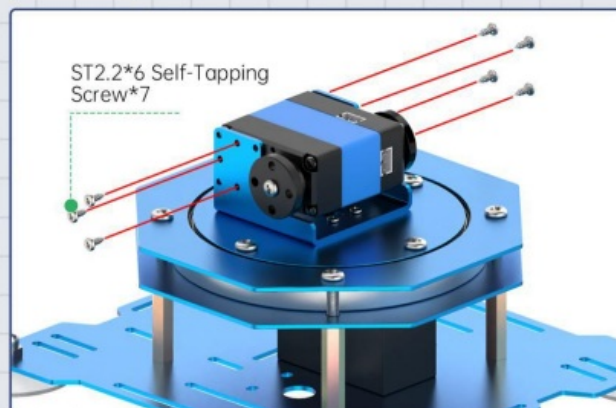
Step8



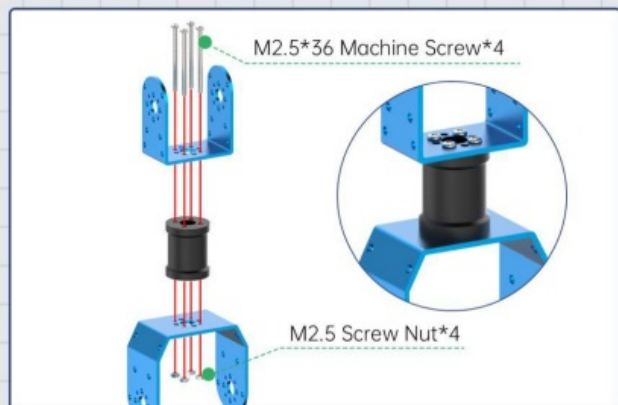
Step9



Step10



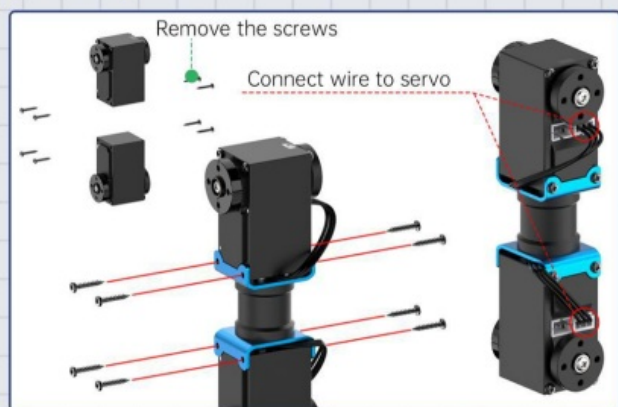
Step11



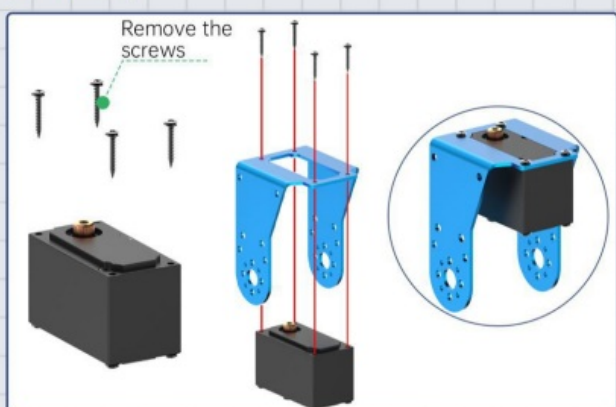
Step12



Step13



Step14



Step15



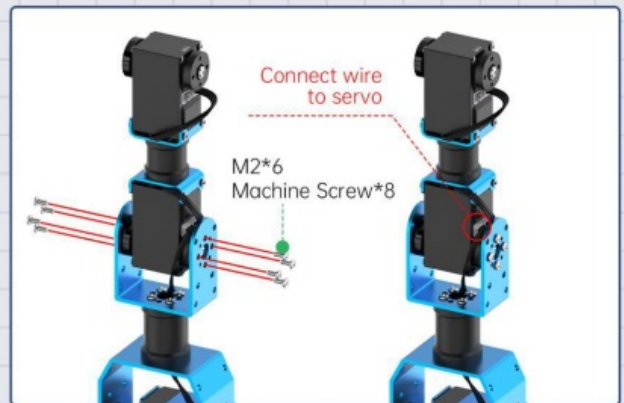
Step16



Step17



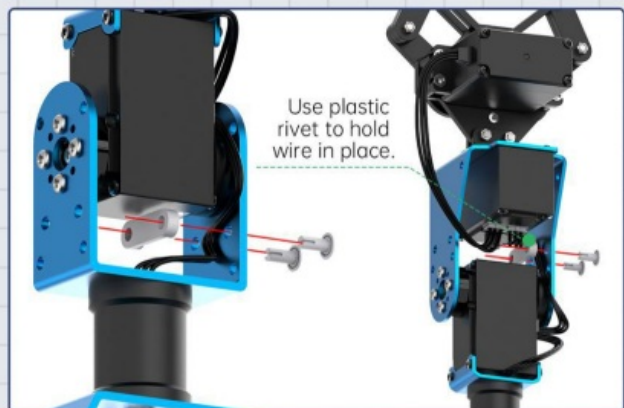
Step18



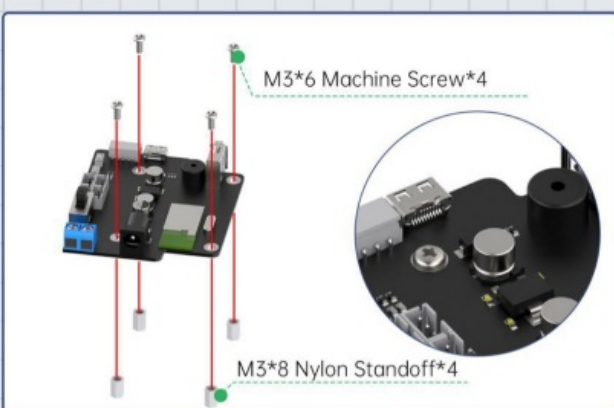
Step19



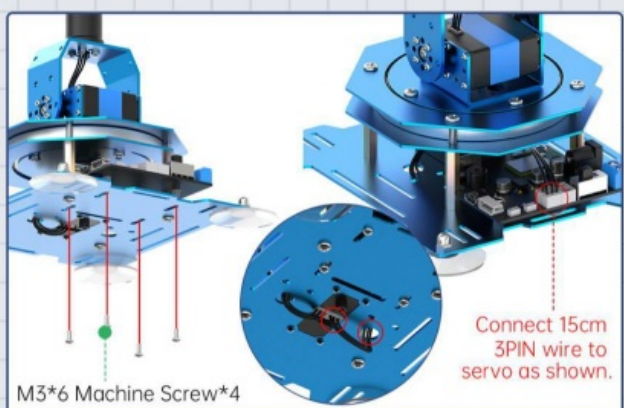
Step20



Step21



Step22

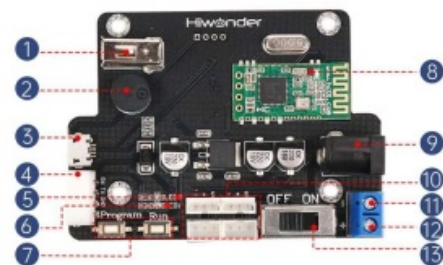




Screw List

M4*32mm Brass Standoff (4pcs)		M2.5*36mm Machine Screw (6pcs)	
M2.5*26mm Machine Screw (6pcs)			
Plastic Rivet (8pcs)	Cable Fastener (4pcs)	M4*20mm Machine Screw (6pcs)	M4*16mm Machine Screw (6pcs)
ST2.6*5mm Self-tapping Screw with A Washer (3pcs)	M2*6mm Machine Screw (22pcs)	M3*6mm Machine Screw (26pcs)	M4*8mm Machine Screw (6pcs)
M3*8mm Nylon Standoff (5pcs)	M4 Screw Nut (6pcs)	ST2.2*6mm Self-Tapping Screw (10pcs)	ST2.2*5mm Self-Tapping Screw (6pcs)
M2.5 Screw Nut (10pcs)	M2 Screw Nut (6pcs)		

Instruction for Bus Servo Controller Interface



1. Mouse/PS2 Handle Receiver Port
2. Low-Pressure Buzzer Alarm
3. USB Communication Interface
4. Serial Communication Interface (For Secondary Development)
5. LED2: Communication Indicator
6. LED1: Power Indicator
7. Manual Programming Button
8. Bluetooth Module
9. DC Power Plug
10. 4 Channels Bus Servo Interface
11. VCC-
12. VCC+
13. Power Switch

Documents / Resources



[xArm 6DOF Kit UNO Robotic Arm \[pdf\] Instruction Manual](#)

6DOF Kit UNO Robotic Arm, 6DOF, Kit UNO Robotic Arm, UNO Robotic Arm, Robotic Arm, Arm

References

- [User Manual](#)

[Manuals+](#), [Privacy Policy](#)

This website is an independent publication and is neither affiliated with nor endorsed by any of the trademark owners. The "Bluetooth®" word mark and logos are registered trademarks owned by Bluetooth SIG, Inc. The "Wi-Fi®" word mark and logos are registered trademarks owned by the Wi-Fi Alliance. Any use of these marks on this website does not imply any affiliation with or endorsement.