



XAB Turntable New Addition
to Project s X Line



XAB Turntable New Addition to Project s X Line Owner's Manual

[Home](#) » [XAB](#) » XAB Turntable New Addition to Project s X Line Owner's Manual 

Contents

- [1 XAB Turntable New Addition to Project s X Line](#)
- [2 Product Usage Instructions:](#)
- [3 Service](#)
- [4 Warranty](#)
- [5 Documents / Resources](#)
 - [5.1 References](#)
- [6 Related Posts](#)



XAB Turntable New Addition to Project s X Line



Specifications:

- **Brand:** Pro-Ject Audio Systems
- **Model:** SG038

- **Usage:** Turntable
- **Playback Speeds:** 33 RPM, 45 RPM
- **Warranty:** Domestic use only, not for commercial use

Product Usage Instructions:

1. Unpacking and Setup:

Unpack all items from the accessory bag and follow the steps provided in the manual to connect the necessary components.

2. Assembling the Turntable:

1. Remove the dust cover carton from the box.
2. Lift the wrapped turntable out of the box.
3. Remove the protective cover.
4. Unpack power supply, record puck, and counterweight from the bottom inserts.
5. Unpack the aluminum platter.
6. Put the drive belt on the pulley and sub-platter.
7. Place the platter on the turntable.

3. Tonearm Setup:

1. Remove the tonearm twist tie.
2. Insert the counterweight in place.
3. Remove the needle protection cover.
4. Put a record on the turntable.
5. Place the tonearm between platter and armrest.
6. Balance the tonearm by adjusting the counterweight.

4. Final Setup:

1. Attach the Anti Skating Weight to the tonearm post.
2. Connect the Phono cable.
3. Level the turntable by adjusting the feet if necessary.
4. Plug in the power cable.
5. Select the playback speed using the rocker-switch on the left.

Frequently Asked Questions (FAQ):

• Q: Can this turntable be used for commercial purposes?

A: No, this turntable is intended for domestic use only. Using it for commercial applications will void the warranty.

• Q: How do I adjust the playback speed?

A: Use the rocker-switch on the left side of the turntable to select between 33 RPM and 45 RPM speeds.

• **Q: What should I do if I need help with setup?**

A: Feel free to contact us or find your nearest dealer on our website for assistance with setup and troubleshooting.

If you have any further questions or concerns, do not hesitate to reach out to us for support. Enjoy your Pro-Ject Audio Systems turntable!

XAB Getting started:

- Make sure to have enough space to unpack your turntable.
- Always unpack and set up in a clean environment.
- Please Do NOT throw away the packaging! If you need service or want to return your product, please send it in the original packaging including all inserts. In case of damage due to alternative packaging your dealer cannot guarantee a full refund.
- **Complete manual:** www.project-audio.com/en/product/debut-xa-b

1. Unpack all items from accessory bag:

2.

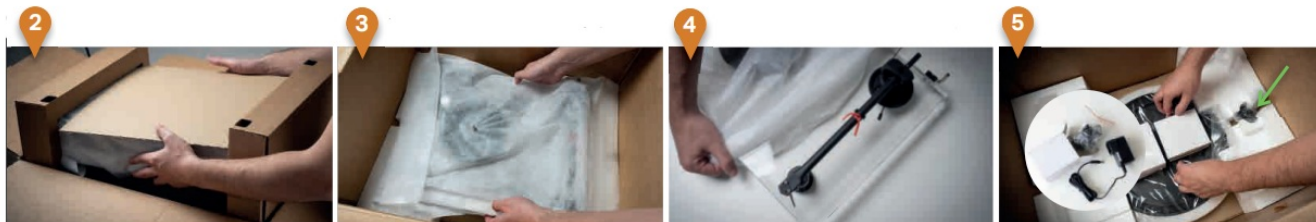


Remove dust cover carton from the box.

3. Remove dust cover carton from the box.

4. Carefully remove the protective cover.

5. Unpack power supply, record puck and

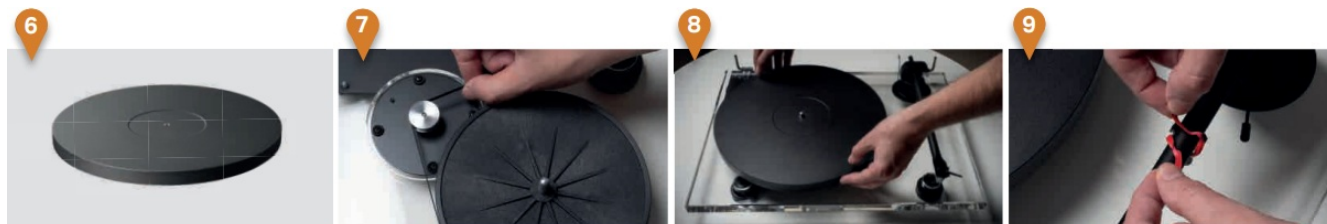


6. Unpack the aluminium platter.

7. Put the drive-belt on the pulley

8. Put the platter on the turntable.

9. Remove tonearm twist tie.



10. Put the counterweight in place.

11. Remove the needle protection cover.

12. Put a record on the turntable.

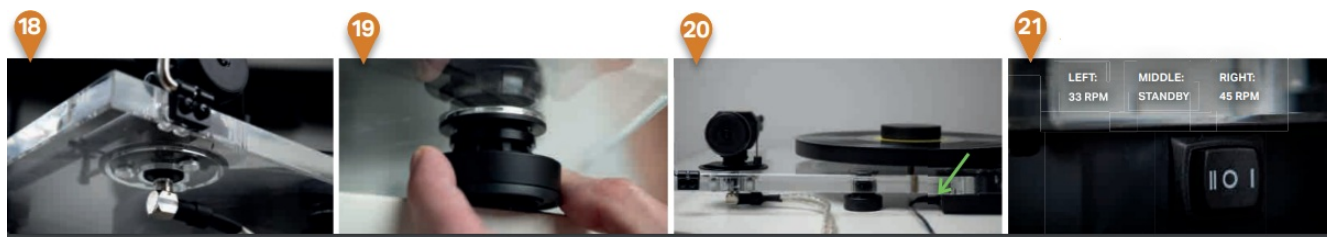
13. Place the tonearm between platter and armrest.



14. Balance the tonearm by turning the counterweight forwards and backwards on the rod.
15. Turn the front dial of the counterweight (not the whole weight) so the '0' is in line with marker at the back of the tonearm.
16. Turn the whole counterweight counter-clockwise until the scale reads 18 – 20.
17. Put the loop of the Anti Skating Weight (a).



18. Plug in the Phono cable.
19. If necessary, level the turntable by adjusting the feet.
20. Plug in the power cable.
21. Use the rocker-switch on the left to select the playback speed.



XA B

Need help?

Feel free to contact us. We have experienced partners all over the world. Find your dealer here: www.project-audio.com/en/find-a-dealer/



Service

Should you encounter a problem which you are not able to alleviate or identify despite the above information, please contact your dealer for further advice. Only when the problem cannot be resolved there should the unit be sent to the responsible distributor in your country. Warranty repairs will only be affected if the unit is returned correctly packaged. For this reason we recommend keeping the original packaging. Never return a record player without making sure that it is safely disassembled and correctly packaged in the original packaging according to the diagrams on the last page of this user guide. Please remove these parts and pack them separately: lid, counterweight, anti-skating weight and belt. Fit the cartridge protection cap and the transport lock for the tonearm tube, prior to carefully packaging the record player.

Warranty

The manufacturer accepts no responsibility for damage caused by not adhering to these instructions for use and/or by transportation without the original packaging. Modification or change to any part of the product by unauthorized persons, release the manufacturer from any liability over and above the lawful rights of the customer.

Warranty: Terms and Conditions

- A warranty is valid only for products purchased from an authorized Pro-Ject Audio Systems retailer or dealer.
- This warranty offer is limited to the repair of the equipment (which could be a repair or replacement at our discretion, neither of which affects your original warranty).
- Neither transportation or any other costs, nor any risk for removal, transportation and installation of products is covered by this warranty.
- A warranty is only valid for the original owner. It is not transferable.
- To validate your warranty, you will need to provide the original sales invoice or other proof of ownership and date of purchase.
- Warranty must be claimed within two years of purchase from an authorized dealer. After this period of time, the warranty will expire.
- The legal warranty obligation exists in addition to this warranty and is not limited by this warranty.
A Pro-Ject Audio Systems warranty relates to claims of defects in materials and/or workmanship at the time of purchase. It does not cover:
 - Deterioration of component parts, the nature of which is to become worn or depleted with use, such as batteries and headphone ear pads, drive belts and cartridges.
 - Damages caused by incorrect installation, connection or packing.
 - Damages caused by any use other than the correct use described in the user manual, negligence, modifications, or use of parts that are not made or authorized by Pro-Ject Audio Systems.
 - Damages caused by faulty or unsuitable ancillary equipment.
 - Damages caused by accidents, lightning, water, fire heat, war, public disturbances or any other cause beyond the reasonable control of Pro-Ject Audio Systems and its appointed distributors.
 - Products where the serial number has been altered, deleted, removed or made illegible.
 - Repairs or modifications that have been executed by an unauthorized person.

Commercial Use


Faults caused due to using domestic products in commercial environments or on commercial scales are not covered by warranty. This turntable is intended for domestic use only. Using them for business applications are done so at your own risk.

Pro-Ject Audio Systems is a Registered Trademark of H. Lichtenegger.

This guide was produced by: Pro-Ject Audio Systems Copyright © 2022. All rights reserved.

The information, pictures and figures were correct at the time of going to press. The manufacturer reserves the right to make changes to the technical specification without prior notice as deemed necessary to uphold the ongoing process of technical development.

Documents / Resources

	<p>XAB Turntable New Addition to Project s X Line [pdf] Owner's Manual</p> <p>Turntable New Addition to Project s X Line, Turntable, New Addition to ProJect s X Line, to Proj ect s X Line, s X Line</p>
---	---

References

- [Find A Dealer – Pro-Ject Audio Systems](#)
- [User Manual](#)

[Manuals+](#), [Privacy Policy](#)

This website is an independent publication and is neither affiliated with nor endorsed by any of the trademark owners. The "Bluetooth®" word mark and logos are registered trademarks owned by Bluetooth SIG, Inc. The "Wi-Fi®" word mark and logos are registered trademarks owned by the Wi-Fi Alliance. Any use of these marks on this website does not imply any affiliation with or endorsement.