



LED CONTROLLER
TYPES FURNITURE
CONTROLLER



X ROCKER LED Controller App User Guide

[Home](#) » [X-Rocker](#) » X ROCKER LED Controller App User Guide 

Contents

- [1 X ROCKER LED Controller App](#)
- [2 DOWNLOADING THE APP GETTING STARTED](#)
- [3 Unable to Connect Troubleshooting](#)
- [4 INSTRUCTIONS](#)
- [5 FCC RADIATION EXPOSURE STATEMENT](#)
- [6 FAQ](#)
- [7 Documents / Resources](#)
 - [7.1 References](#)
- [8 Related Posts](#)



X ROCKER LED Controller App






Attention

Specifications:

- Model Number: 21752
- Power: 57W
- Voltage: 110-240V

LED CONTROLLER TYPES FURNITURE CONTROLLER



	Light return key	Touch this key to return to the previous light color
	Power button	Long Press to turn on/off the lights. Short Press: 1. Single Colour Modes 2. Dynamic RGB Modes 3. Sound Reactive control modes
	Light forward button	Touch this button to select the next colour/light in sequence

Please note that a separate USB 2.0 5V/2A power supply is needed to power the desk for operation. Ensure that the maximum voltage output of your chosen power source does not exceed 5V. Exercise caution when plugging the cable into your gaming desk to avoid damaging the socket and/or cable. Please be advised that the power supply is not included.

DOWNLOADING THE APP GETTING STARTED

1. Download the "LED SMART" APP with your mobile phones by scanning the QR code on user manual or search the "LED SMART" APP in iPhone APP store or Google play store.
2. After the APP is downloaded, please ensure that Bluetooth and Location settings are switched on for LED Smart.
3. Power on your Neo Motion TM Sync product.
4. Open the LED Smart App, The Neo Motion (Sync) App should automatically be discovered and ready to use.



App Store Icon



X Rocker
products in app

Unable to Connect Troubleshooting

1. Please ensure that power is correctly being provided to the Neo Motion TM Sync product

2. Check that location settings and Bluetooth is switched on.
3. If other devices have been used with Neo Motion Sync, the app on that device needs to be closed before another can control the LED.
4. If devices do not show in the pairing screen, please refresh the screen by pressing the refresh button.
5. If paired but no light showing – press the power button in the app to switch the lights on.
6. Please ensure App is up to date by checking Google Play or Apple iOS stores

INSTRUCTIONS

1. Allow Location settings if not done so already
2. Allow the App to connect to nearby devices
3. On the main screen – press the refresh icon to search for nearby Neo Motion TM Sync devices
4. To control a single device – select the Devices menu and click the icon for the device you want to control
5. To control a group of devices – select ‘groups’ from the top of the screen
6. On the left side of the screen, click on all devices you want to control together, then select ‘Add Device’
7. Rename the group of devices and click ‘Confirm’
8. Click on the group name to enter control for all

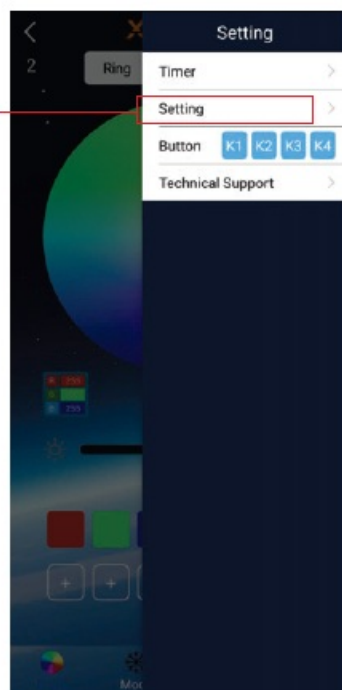
ADDING CUSTOM COLOURS/PATTERNS

- Short press on the [+] boxes and select a colour or pattern to add.
- To remove the colour or pattern, long press on the button to delete the selection.



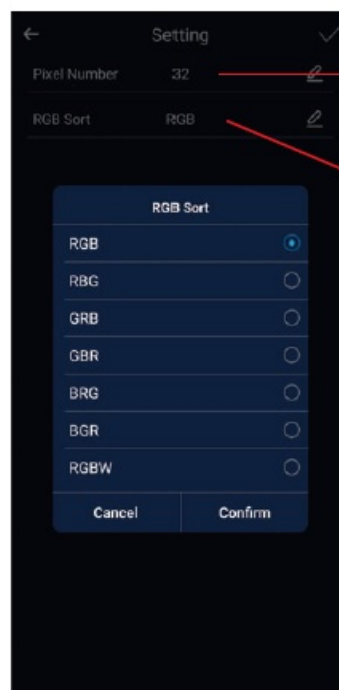
Setting: You can set RGB sorting, timing, shake, and change skin.

Set RGB
sort



Adjust
pixels

Adjust RGB
order

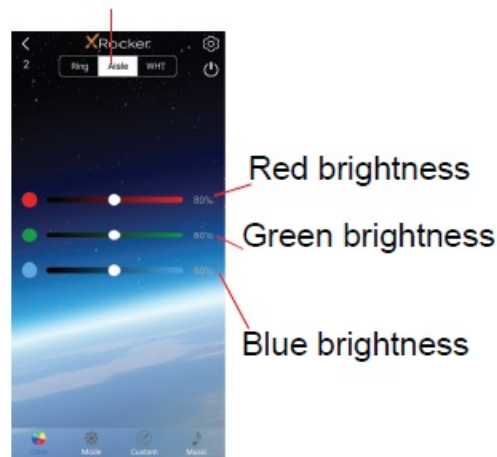


Colour interface: This interface has controls single colour. ‘Ring’ uses a colour ring for control, ‘Aisle’ lets you set

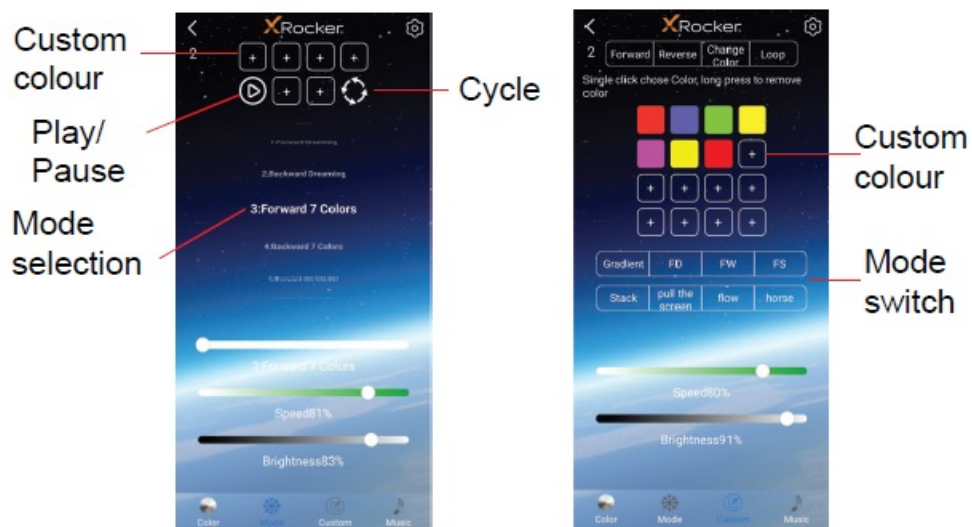
RGB values and 'WHT' controls White LED and brightness.



Aisle



- **Mode interface:** Use this to choose from over 200 pattern modes. adjust the speed and brightness and store your favourite



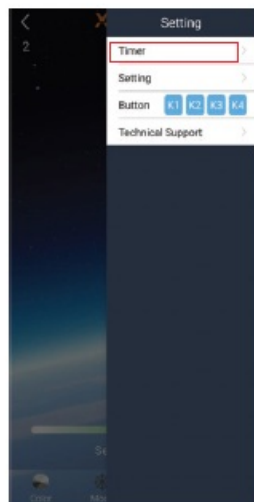
Music Mode: The voice control interface has hundreds of voice control modes to choose from. These react to sounds that happen near the Control bo



Sound Reaction patterns

(Settings)-Timer Mode:

1. Press [+] To create a new timer.
2. Set the function to either turn on/ turn off or a pattern
3. Set the date you would like the instruction to run
4. Once set, click 'Send', the device will flash twice to confirm to send the instruction to the Neo Motion TM Sync devices. NB. If you set a turn off function without a turn on then please ensure you turn the lights back on using the app.



Add timer

FCC RADIATION EXPOSURE STATEMENT



IC RADIATION EXPOSURE STATEMENT

Caution: The user is cautioned that changes or modifications not expressly approved by the party responsible for compliance could void the user’s authority to operate the equipment.

FCC NOTE: This equipment has been tested and found to comply with the limits for a Class B digital device, pursuant to Part 15 of the FCC Rules. These limits are designed to provide reasonable protection against harmful interference in a residential installation. This equipment generates, uses and can radiate radio frequency energy and, if not installed and used in accordance with the instructions, may cause harmful interference to radio communications. However, there is no guarantee that interference will not occur in a particular installation. If this equipment does cause harmful interference to radio or television reception, which can be determined by turning the equipment off and on, the user is encouraged to try to correct the interference by one or more of the following measures:

- Reorient or relocate the receiving antenna.
- Increase the separation between the equipment and receiver.
- Connect the equipment into an outlet on a circuit different from that to which the receiver is connected.
- Consult the dealer or an experienced radio/TV technician for help.

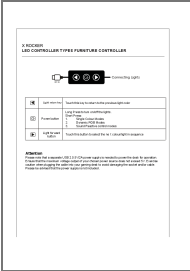
FCC Radiation Exposure Statement:

This equipment complies with FCC radiation exposure limits set forth for an uncontrolled environment. This transmitter must not be co-located or operating in conjunction with any other antenna or transmitter.

FAQ

- **Q: What should I do if the device does not turn on?**
A: Check the power connection and ensure the power source is functioning correctly. If the issue persists, refer to the troubleshooting section of the user manual or contact customer support for assistance.
- **Q: Can I use this product internationally?**
A: Yes, you can use this product internationally as long as the voltage requirements are within the specified range of 110-240V. Use appropriate plug adapters if necessary

Documents / Resources



[X ROCKER LED Controller App](#) [pdf] User Guide
XVMSMD-U-APP, XVMSMDUAPP, smd u app, LED Controller App, Controller App, App

References

- [User Manual](#)

[Manuals+.](#) [Privacy Policy](#)

This website is an independent publication and is neither affiliated with nor endorsed by any of the trademark owners. The "Bluetooth®" word mark and logos are registered trademarks owned by Bluetooth SIG, Inc. The "Wi-Fi®" word mark and logos are registered trademarks owned by the Wi-Fi Alliance. Any use of these marks on this website does not imply any affiliation with or endorsement.