



# X-MAKER IME3D2011 Smart 3D Printer User Guide

[Home](#) » [X-MAKER](#) » X-MAKER IME3D2011 Smart 3D Printer User Guide 

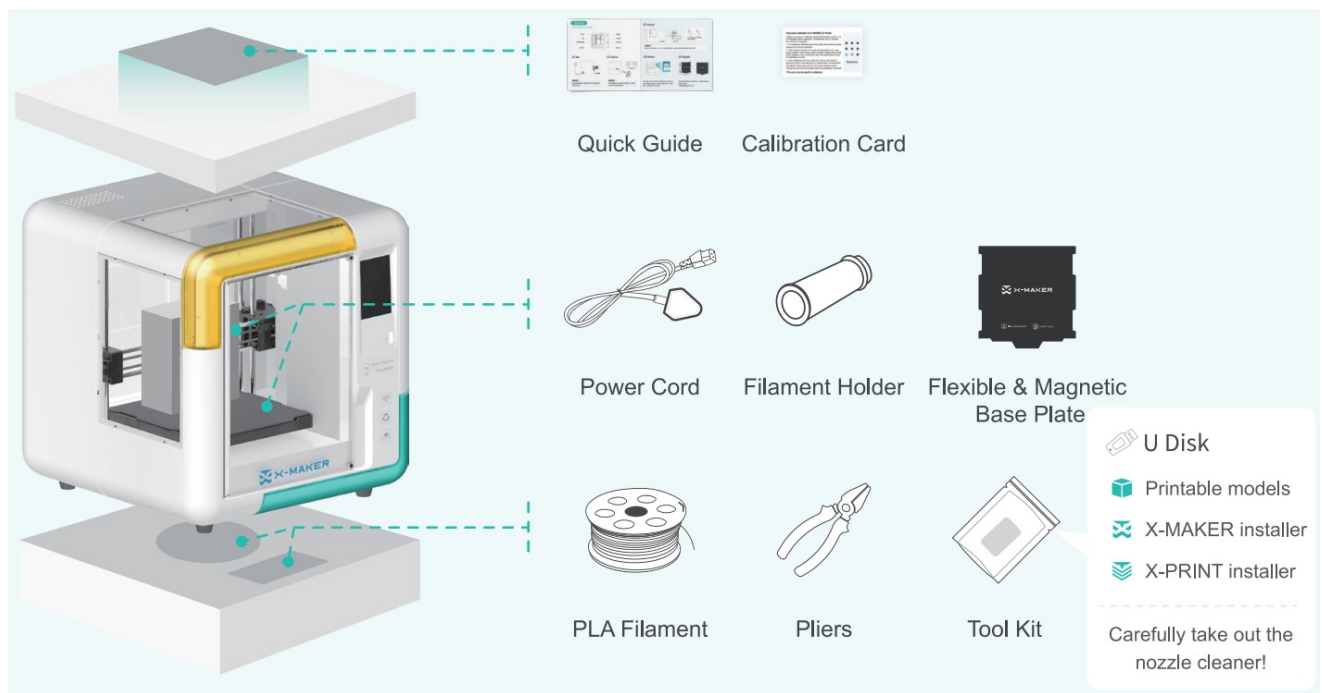


IME3D2011 Smart 3D Printer  
User Guide

## Contents

- [1 Packing List](#)
- [2 How to start?](#)
- [3 X-MAKER App](#)
- [4 ONE-TOUCH PRINTING](#)
- [5 Documents / Resources](#)
- [6 Related Posts](#)

## Packing List



## Notes

- AOSEED filaments are recommended. To avoid clogging in the nozzle, avoid frequently changing filaments of various brands.
- Please notice the supported versions when installing X-MAKER App
- The recommended ambient temperature for using the printer is 0 to 35°C. Please turn off the printer when not in use.

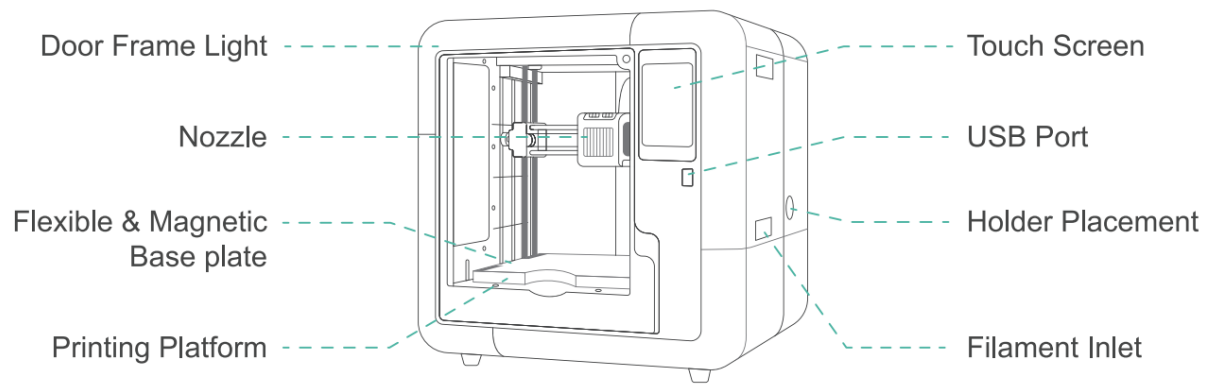
For more information, please visit [www.aoseed.com](http://www.aoseed.com)



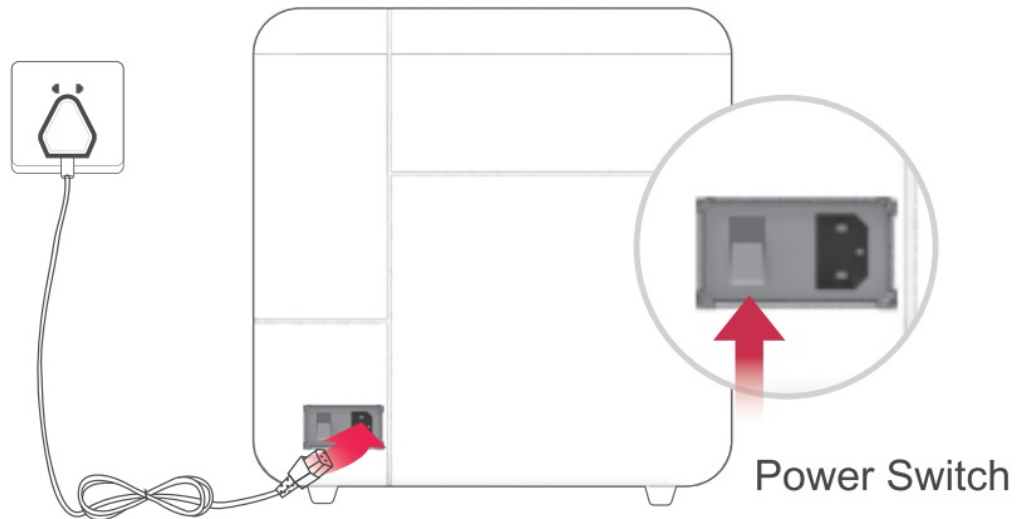
<http://www.aoseed.com>

## How to start?

### X-MAKER 3D Printer



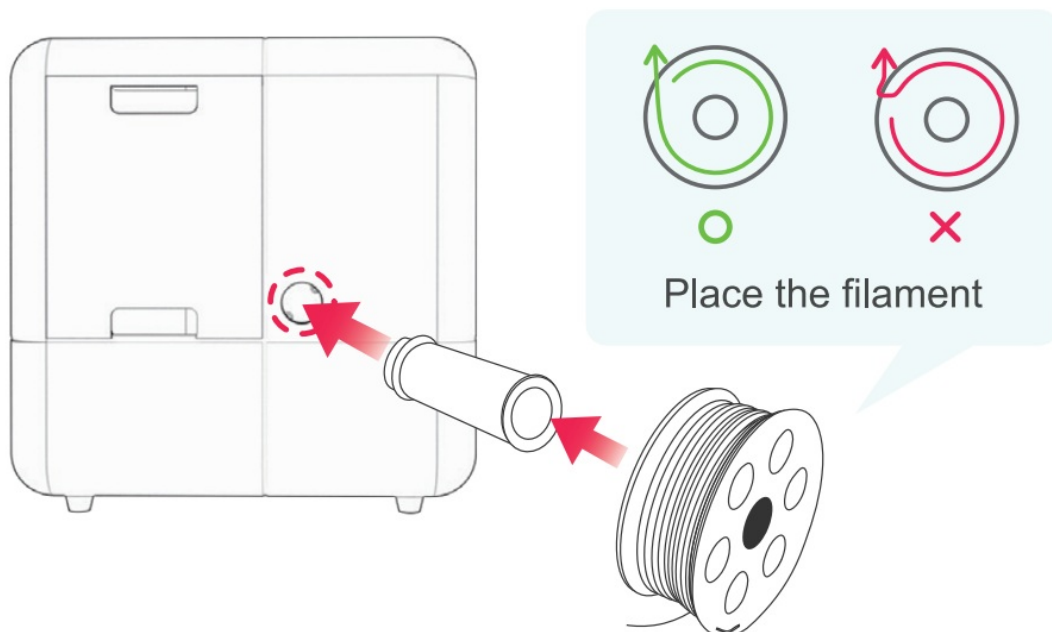
### 1. Power on



#### Note

Please keep your hands dry when pulling out the power cord. Connect the power cord first, then turn on the power switch.

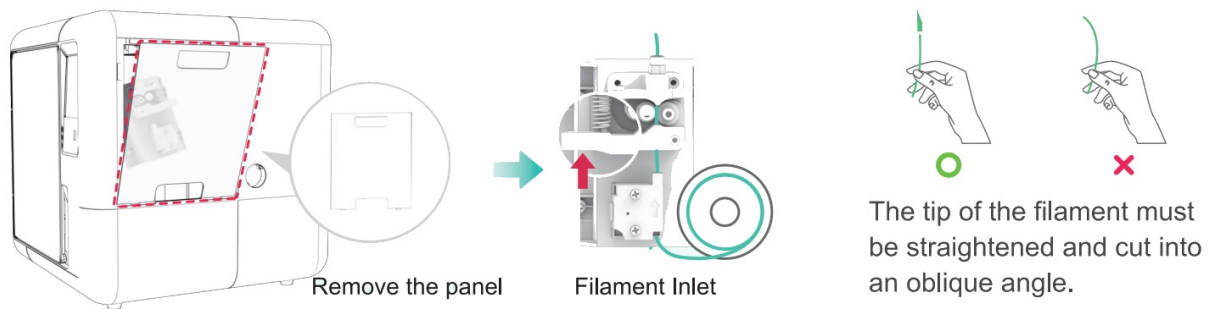
### 2. Install the filament holder



#### Note

Please make sure the filaments are not knotted or crossed before placing the spool in the holder.

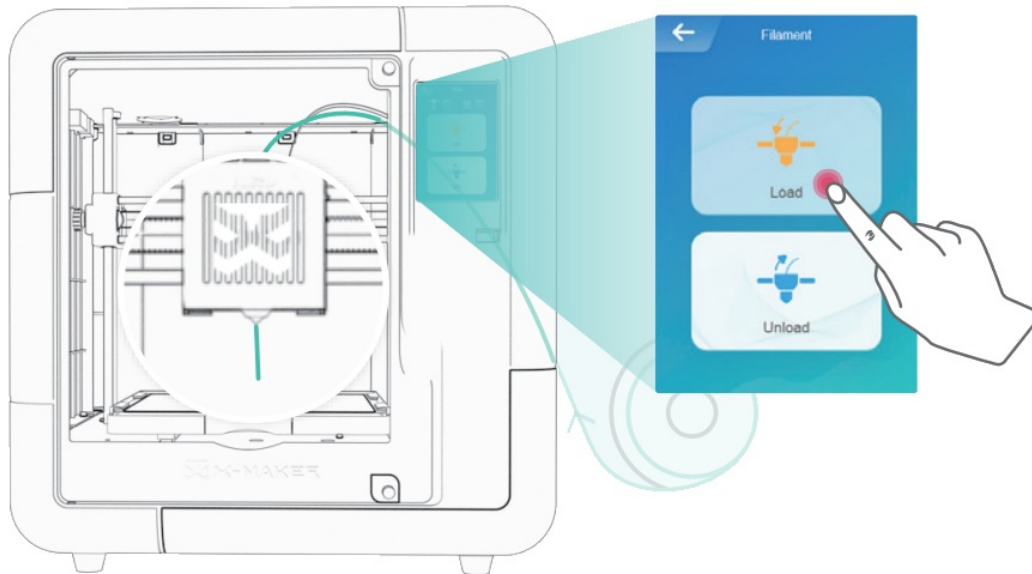
### 3. Install the filament



#### Note

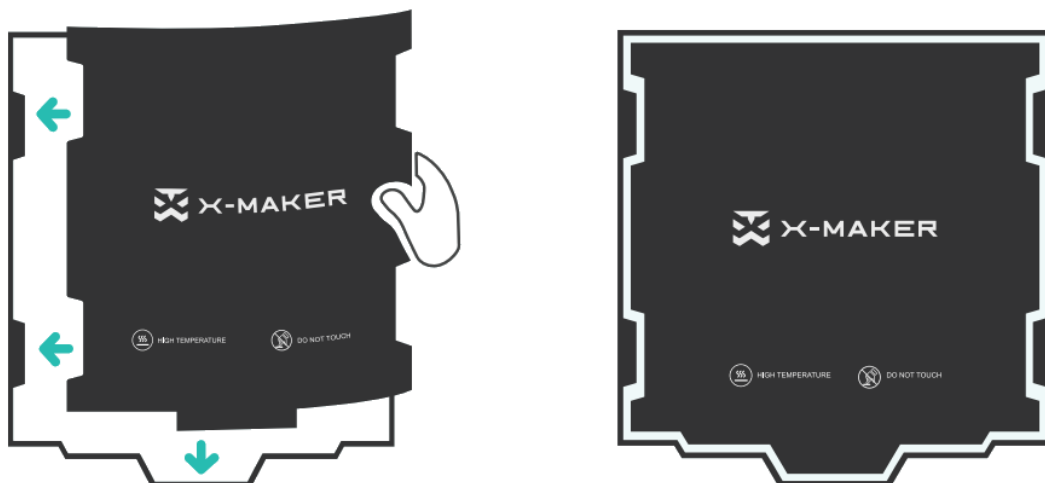
Insert the tip into the filament inlet until the prereader grabs the material. Push the spring up (as shown by the red arrow in the figure above), to make the filament enter smoothly.

#### 4. Load the filament



Go to “Filament-> Load” and wait until the filament comes out of the nozzle. Repeat the above operation if the filament does not come out. (Clean the nozzle before printing.)



#### 5. Place the Base Plate



Make sure the base plate is aligned with the heating platform.

Keep the base plate clean and flat after placing it.

#### 6. Model printing

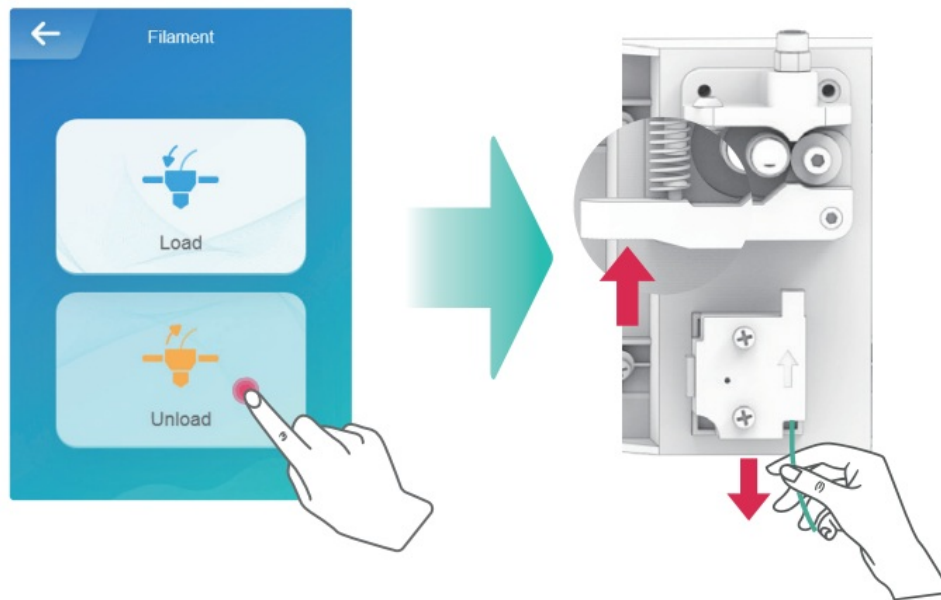
		
Creative U-disk Printable Models	Easy-to-use one-touch printing with the X-MAKER App	More model data processing with the X-PRINT

## 7. Print complete



Let the printer cool down below 45°C before removing the model to prevent burns. Remove the support structures from the models with pliers.

## 8. Unload the filament



Go to “Filament -> Unload” and wait until the filament comes out from under the extruder gear. Push the spring up and pull out the filament. (If the tip of the filament is round, cut it off or you will damage the FES.)

## X-MAKER App

### Download and installation

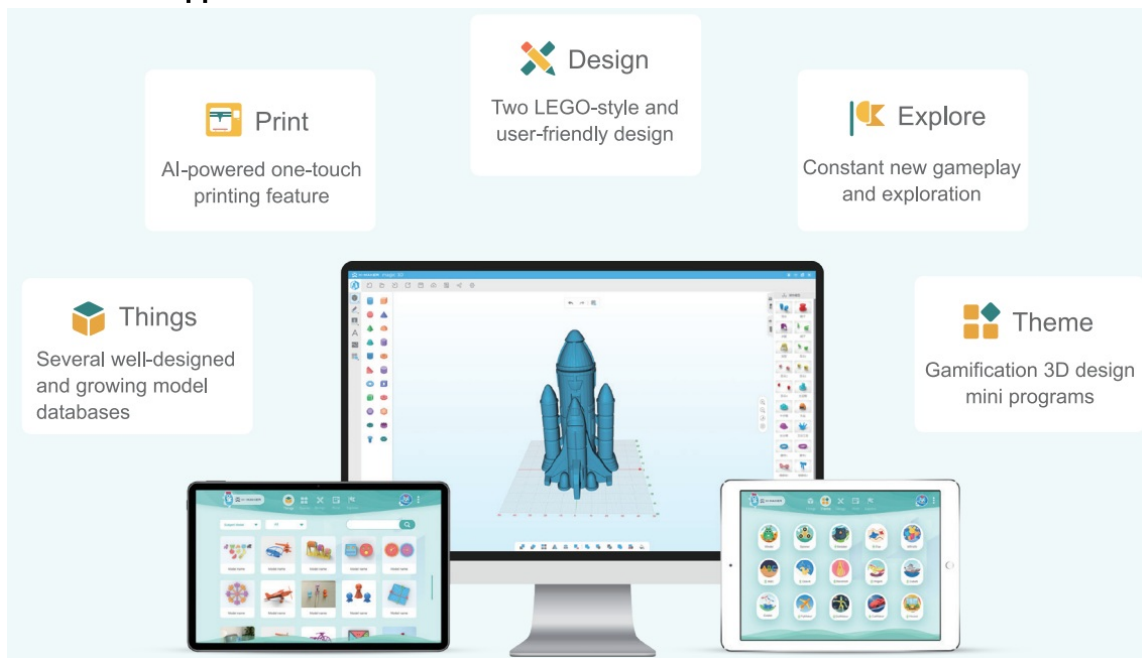
#### For Windows PC

<https://www.aoseed.com/download> loads Or, install the App from U disk

#### For Android Tablet I iPad

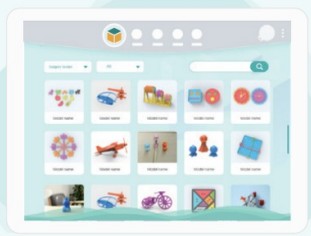
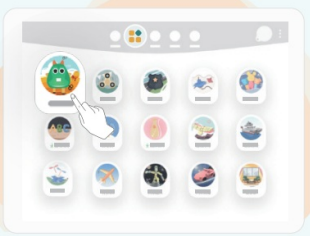
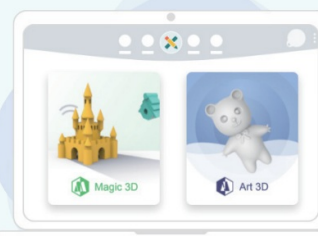
<https://www.aoseed.com/downloads> Or, search “X-MAKER or XMAKER” in Google play/App Store

### About the X-MAKER App



## ONE-TOUCH PRINTING

**Make Creativity Touchable.**


 <p><b>Things</b></p>	 <p><b>Theme</b></p>	 <p><b>Design</b></p>
<p>Original well-designed model database with elaborate 3D models. Upon unboxing, you can start creating with the one-touch printing.</p>	<p>Gamify 3D design mini-programs with various modeling: sketch-based, revolving, building block and parameter. Easy to DIY your digital creations.</p>	<p>Two free design software: 'digital building blocks' and 'digital clay', which are compatible with all 3D models and help you develop advanced creativity.</p>



High-speed Wi-Fi & Easy-to-use one-touch Printing



## Documents / Resources

	<p><a href="#">X-MAKER IME3D2011 Smart 3D Printer</a> [pdf] User Guide  IME3D2011 Smart 3D Printer, IME3D2011, IME3D2011 3D Printer, Smart 3D Printer, Smart Printer, 3D Printer, Printer</p>
---	---