



# X-MAKER JOY V40-2A35N Creating Toys Better Than Playing User Guide

[Home](#) » [X-MAKER JOY](#) » X-MAKER JOY V40-2A35N Creating Toys Better Than Playing User Guide 



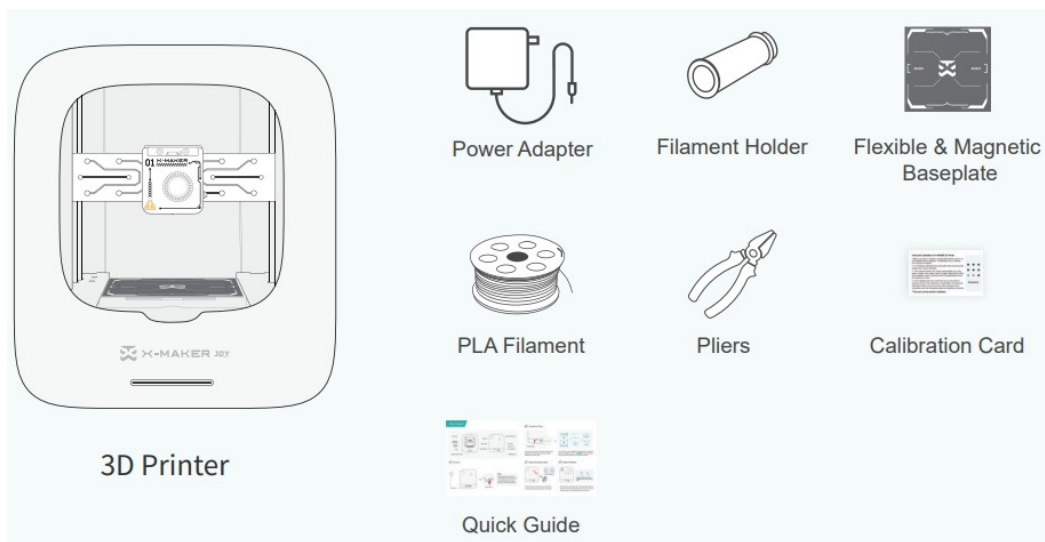
Quick Guide  
CREATING TOYS BETTER  
THAN PLAYING

## Contents

- [1 V40-2A35N Creating Toys Better Than Playing](#)
- [2 How to start](#)
- [3 X-MAKER App](#)
- [4 Documents / Resources](#)
  - [4.1 References](#)
- [5 Related Posts](#)

## V40-2A35N Creating Toys Better Than Playing

### Packing List

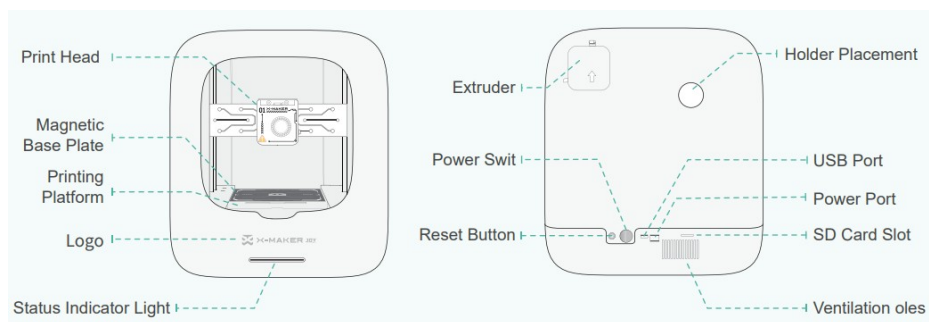


## Notes

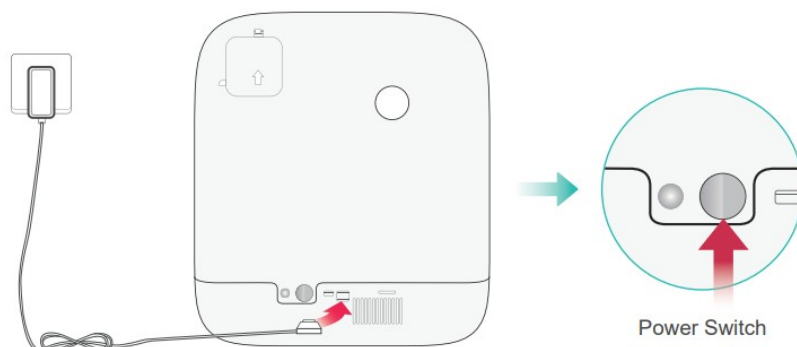
- AOSEED filaments are recommended. Do not frequently change filaments of various brands to avoid nozzle jamming.
  - Please notice the supported versions when installing X-MAKER App
  - Recommended ambient temp for using the printer is 0-35°C. Please turn off the printer when not in use
- For more information, please visit [www.aoseed.com](http://www.aoseed.com)



## How to start



### 1. Power on



## Note

Please keep your hands dry when taking out the power cord.

Connect the power cord first, then turn on the power switch.

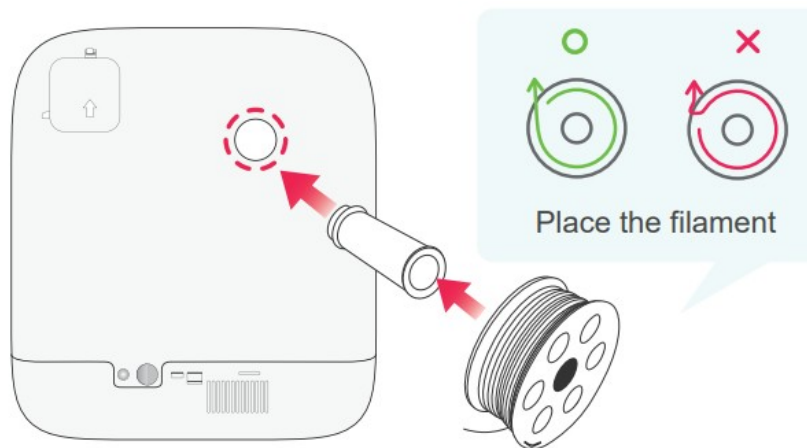
## 2. Connect to Printer



Long press the red button at the back until you hear a prompt beep, and the indicator light turns yellow, indicating a successful reset

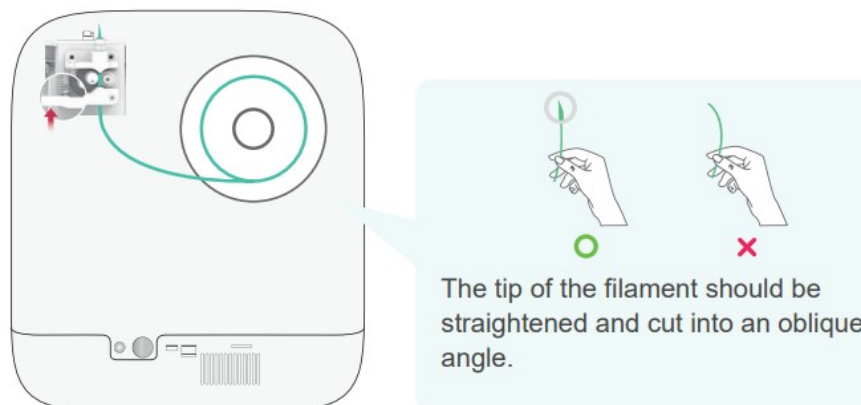
Launch the app. Select X-MAKER JOY, then follow the operations shown in the diagram. Click the " **Connect Hotspot** " button. Enter the Wi-Fi account and password, and connect to the printer.

## 3. Install the filament holder



Please make sure the filaments are not knotted or intersected before placing the spool on the holder.

## 4. Install the filament



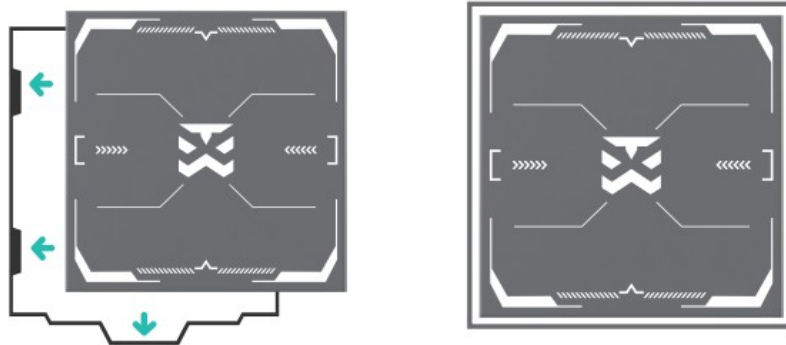
Insert the tip into the filament inlet until the prefeeder grabs the material. Push the spring upward (as shown by the red arrow in the figure above), to make the filament enter smoothly.

## 5. Load the filament



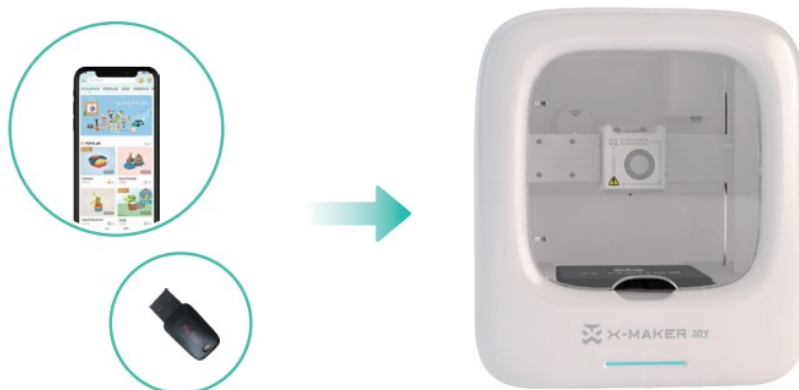
After connection, go to App Printer-Printer Settings-Filament, and click Load. Wait for the nozzle to heat. Loading is complete when filament comes out. (Make sure the nozzle is clean before printing.)

#### 6. Place the Baseplate



Ensure the baseplate is aligned with the heating platform. Keep the baseplate clean and flat after placement.

#### 7. Model printing



Creative U-disk Printable Models Easy-to-use one-press printing with the X-MAKER App

#### 8. Print complete



Remove the print



Remove support material

Allow the printer to cool down below 45 °C before taking out the model in case of burns.

Remove the support structures of modelsm using pliers.

### X-MAKER App

## Download and installation

- For Windows PC

<https://www.aoseed.com/downloads>

Or, install the App from U disk

- For Android Tablet / iPad / Smartphones

Or, search “X-MAKER or XMAKER” in Googleplay / App Store <https://www.aoseed.com/downloads>



High-speed Wi-Fi & Easy-to-use One-press Printing

## FCC WARNING

This device complies with part 15 of the FCC Rules. Operation is subject to the following two conditions:

1. this device may not cause harmful interference, and
2. this device must accept any interference received, including interference that may cause undesired operation. Any changes or modifications not expressly approved by the party responsible for compliance could void the user's authority to operate the equipment.

**NOTE:** This equipment has been tested and found to comply with the limits for a Class B digital device, pursuant to Part 15 of the FCC Rules. These limits are designed to provide reasonable protection against harmful interference in a residential installation. This equipment generates, uses and can radiate radio frequency energy and, if not installed and used in accordance with the instructions, may cause harmful interference to radio communications. However, there is no guarantee that interference will not occur in a particular installation. If this equipment does cause harmful interference to radio or television reception, which can be determined by turning the equipment off and on, the user is encouraged to try to correct the interference by one or more of the following measures:

- Reorient or relocate the receiving antenna.

- Increase the separation between the equipment and receiver.
- Connect the equipment into an outlet on a circuit different from that to which the receiver is connected.
- Consult the dealer or an experienced radio/TV technician for help.

To maintain compliance with FCC's RF Exposure guidelines, This equipment should be installed and operated with minimum distance between 20cm the radiator your body: Use only the supplied antenna.



## Documents / Resources

A small thumbnail image of the user guide PDF, showing the title 'X-MAKER JOY V40-2A35N Creating Toys Better Than Playing' and a 'Quick Guide' tab.	<p><a href="#">X-MAKER JOY V40-2A35N Creating Toys Better Than Playing</a> [pdf] User Guide  V40-2A35N, V40-2A35N Creating Toys Better Than Playing, Creating Toys Better Than Playing,  Toys Better Than Playing, Better Than Playing, Than Playing, Playing</p>
---	---

## References

- [AOSEED](#)
- [AOSEED](#)
- [User Manual](#)

### Manuals+ Privacy Policy

This website is an independent publication and is neither affiliated with nor endorsed by any of the trademark owners. The "Bluetooth®" word mark and logos are registered trademarks owned by Bluetooth SIG, Inc. The "Wi-Fi®" word mark and logos are registered trademarks owned by the Wi-Fi Alliance. Any use of these marks on this website does not imply any affiliation with or endorsement.