

## X-MAKER JOY AOSEED 3D Printer



# X-MAKER JOY AOSEED 3D Printer User Guide

[Home](#) » [X-MAKER JOY](#) » X-MAKER JOY AOSEED 3D Printer User Guide 

### Contents

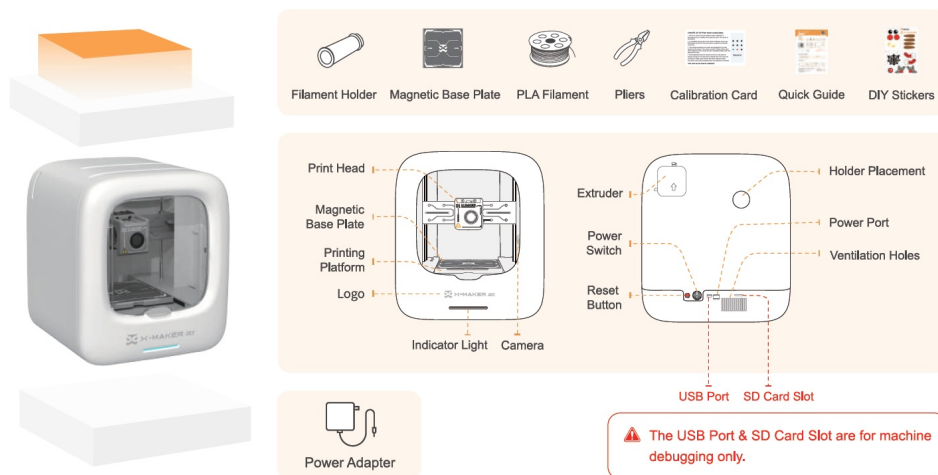
- [1 X-MAKER JOY AOSEED 3D Printer](#)
- [2 How to Start](#)
- [3 Documents / Resources](#)
  - [3.1 References](#)
- [4 Related Posts](#)



**X-MAKER JOY AOSEED 3D Printer**



## Packing List



## App Download and Installation



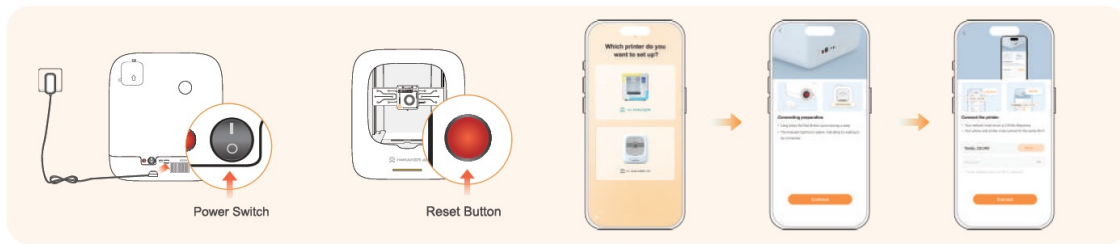
- For Android Tablet/ iPad / Smartphones [www.aoseed.com/pages/apps-downloads](http://www.aoseed.com/pages/apps-downloads) Or search "XMAKER" in Googleplay/App Store.
- For Windows PC [www.aoseed.com/pages/apps-downloads](http://www.aoseed.com/pages/apps-downloads)

## For Windows PC



X- PRINT is 3D slicer software available only for Windows.

## Connect 3D Printer



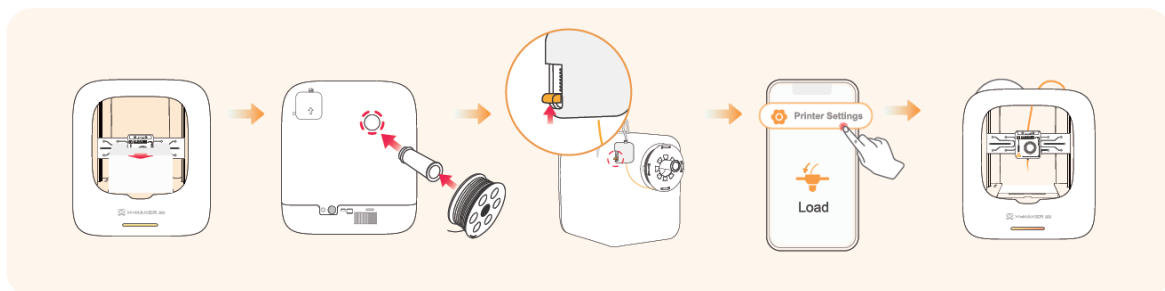
- Keep your hands dry. Take out the adapter and connect the power. Switch on the “Power Switch” .
- Open the X-MAKER App and select X-MAKER JOY.
- Long press the red “Reset Button” until you hear a beep. The indicator light will turn solid yellow.
- Enter the correct Wi-Fi password, then tap Connect (ensure the Wi-Fi frequency is 2.4GHz).

## Connection Failed

- Ensure the printer and devices are connected to the same 2.4GHz Wi-Fi network.
- Restart the App or Printer, then try connecting again later.

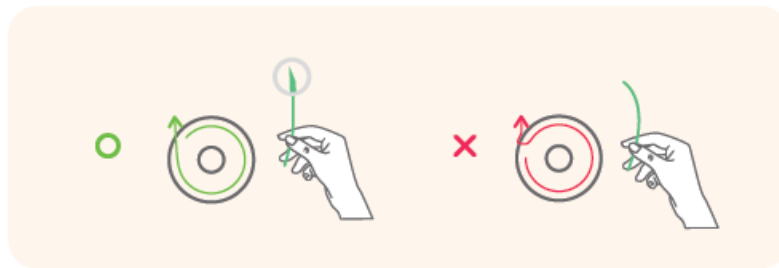
## How to Start

### Install the Filament

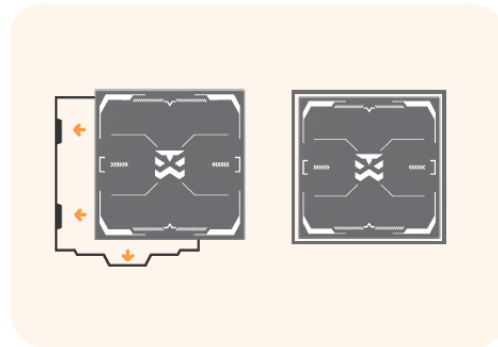


- Remove the nozzle protective foam.
- Insert the holder into the placement hole, and put the filament spool on the holder.
- Push the orange handle upward a little, then insert the filament tip into the inlet until the filament enters into the Extruder.
- Go to App > Printer Settings > Load. Click “Load”. Then the nozzle will be automatically heated. The filament will be loaded then and the loading completes until the filament comes out from the nozzle.

**Cut the filament aslant and make it straightened.**



## Place the Base Plate



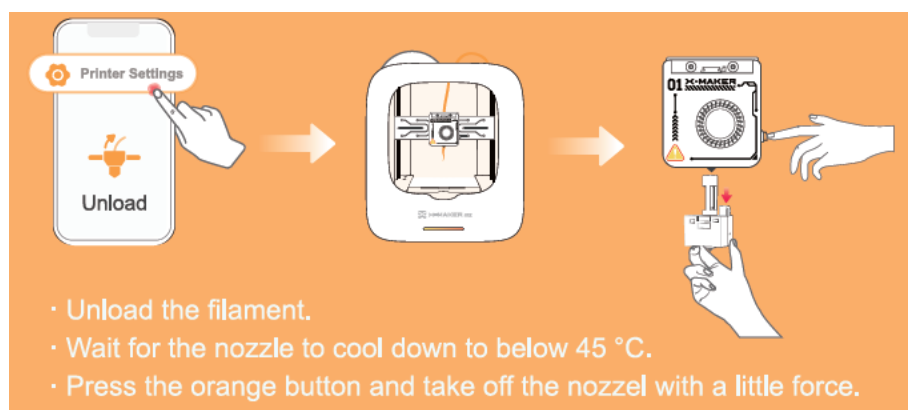
Ensure the base plate is clean & flat, and aligned with the platform.

## Model Printing and Removal

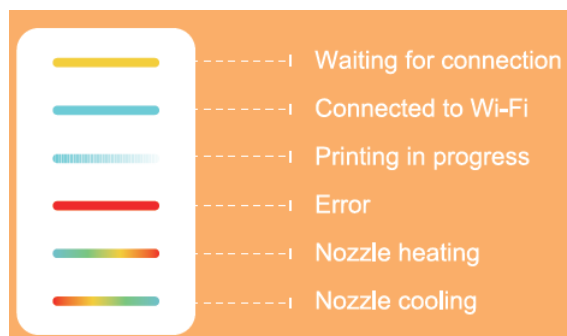


- Easy-to-use one-click printing with the X-MAKER App.
- X-MAKER App > Things, one-click printing.
- X-MAKER App> Theme (or Design), DIY your own model to print.

## Quick Swap Nozzle




## Indicator Light



## Notes

- AOSEED filaments are recommended. Do not frequently change filaments of various brands to avoid nozzle jamming.
- Please note that the app versions available for installation may vary on different platforms.
- Recommended ambient temperature for using the printer is 0-35 °C. Please turn off the printer when not in use.
- For more information, please visit [www.aoseed.com](http://www.aoseed.com).

## Documents / Resources

	<p><a href="#">X-MAKER JOY AOSEED 3D Printer</a> [pdf] User Guide AOSEED 3D Printer, AOSEED, AOSEED Printer, 3D Printer, Printer</p>
---	--

## References

- [User Manual](#)

### Manuals+, Privacy Policy

This website is an independent publication and is neither affiliated with nor endorsed by any of the trademark owners. The "Bluetooth®" word mark and logos are registered trademarks owned by Bluetooth SIG, Inc. The "Wi-Fi®" word mark and logos are registered trademarks owned by the Wi-Fi Alliance. Any use of these marks on this website does not imply any affiliation with or endorsement.