



# WyreStorm SW-220-TX-W 2 Input 4K Presentation Switcher with Wireless Casting User Guide

[Home](#) » [WyreStorm](#) » WyreStorm SW-220-TX-W 2 Input 4K Presentation Switcher with Wireless Casting User Guide 



## Quick start Guide 2-Input 4K Presentation Switcher with Wireless Casting SW-220-TX-W

### Contents

- [1 SW-220-TX-W 2 Input 4K Presentation Switcher with Wireless Casting](#)
- [2 Basic Wiring Diagram](#)
- [3 Wiring and Connections](#)
- [4 Audio Connections](#)
- [5 API Control & Web UI](#)
- [6 APO-DG1 Pairing](#)
- [7 Guide Screen](#)
- [8 Troubleshooting](#)
- [9 Warranty Information](#)
- [10 Documents / Resources](#)
  - [10.1 References](#)
- [11 Related Posts](#)

## SW-220-TX-W 2 Input 4K Presentation Switcher with Wireless Casting



Wyre Storm recommends reading through this document in its entirety to become familiar with the product's features prior to starting the installation process.



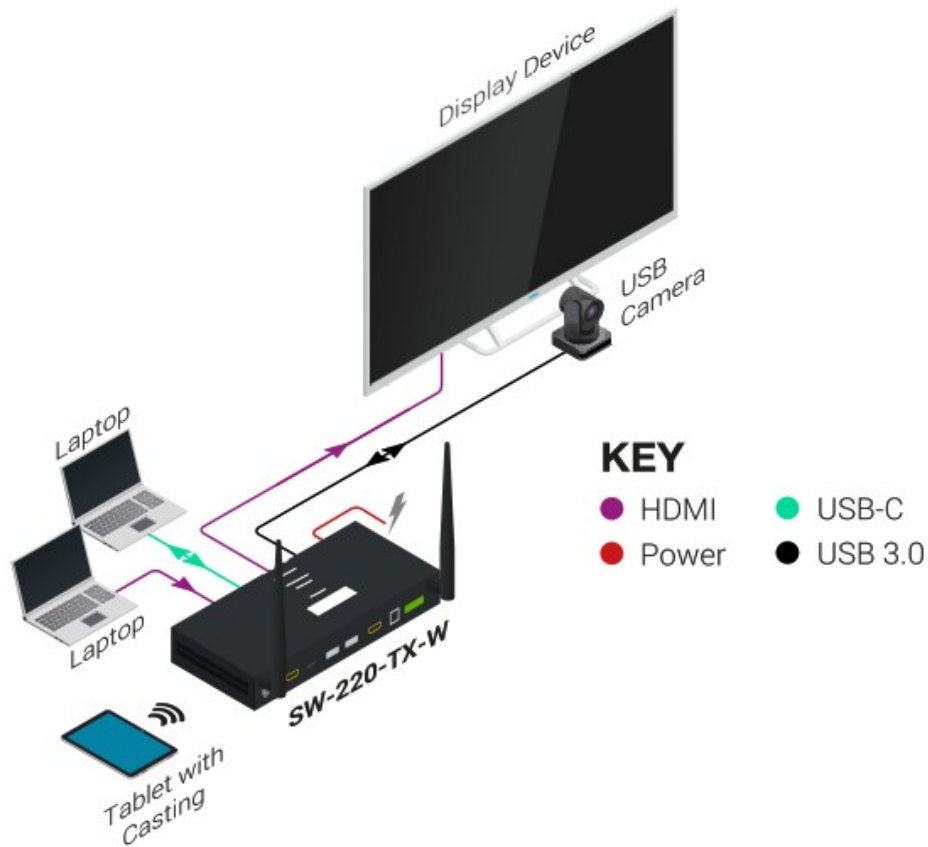
## IMPORTANT! Installation Requirements

- Read through the Wiring and Connections section for important wiring guidelines before creating or choosing premade cables.
- While these products support CEC for the HDMI outputs, WyreStorm cannot guarantee compatibility with all forms of CEC communication.
- Visit the product pages to download the latest firmware, document version, additional documentation, and configuration tools.

### In the Box

1x SW-220-TX-W Switcher  
1x 12V Power Supply (US/UK/EU/AU)  
1x 5-pin Terminal Block  
2x Mounting Brackets with Screws  
1x Quickstart Guide (This Document)

### Basic Wiring Diagram



### Wiring and Connections

Wyre Storm recommends that all wiring for the installation is run and terminated prior to making connections to the switcher. Read through this section in its entirety before running or terminating any wires to ensure proper operation and to avoid damaging the equipment.

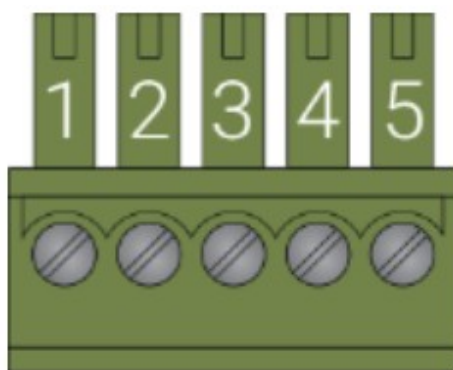


## IMPORTANT! Wiring Guidelines

- The use of patch panels, wall plates, cable transmitters, kinks in cables, and electrical or environmental interference will have an adverse effect on signal transmission which may limit performance. Steps should be taken to minimize or remove these factors completely during installation for best results.
- This product contains a USB-C connection that can be used as an audio/ video input. When using this connection verify that the USB-C cable used supports audio/video functionality as not all USB-C cables support this requirement.

## Audio Connections

The analog audio output uses a 5-pin balanced phoenix connector



WyreStorm Connector			3rd Party Device
Pin 1	Left Positive (Li-)	—> To —>	Left Positive (Li-)
Pin 2	Left Negative (L-)	—> To —>	Left Negative (L-)
Pin 3	Ground (G)	—> To —>	Ground (G)
Pin 4	Right Negative (R-)	—> To —>	Right Negative (R-)
Pin 5	Right Positive (R+)	—> To —>	Right Positive (R+)

## API Control & Web UI

The SW-220-TX-W contains a web UI that can be accessed by connecting to a network and entering the IP address. WyreStorm recommends settings a static IP to the switcher before permanent installation. API commands can be sent from a 3rd-party control system to control various aspects of the switcher. For full details on the API see the separate API documentation at [wyrestorm.com](https://wyrestorm.com).

## LAN Settings

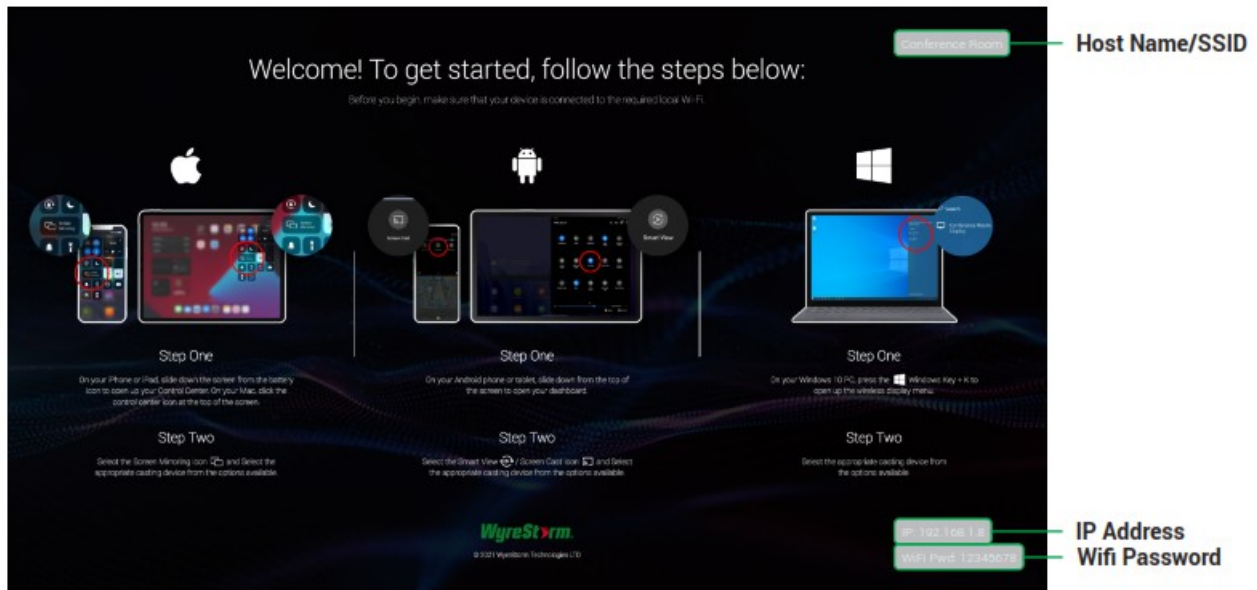
Default IP Address:	DHCP
Telnet IP Port (Default):	23
TLS IP Port:	24

## APO-DG1 Pairing

The SW-220-TX-W is compatible with the optional APO-DG1 wireless casting dongle. To pair an APO-DG1 with the switcher, insert the USB-C connector of the dongle into the USB-C “Pairing” port on the front of the switcher. A message will appear on the display connected to the switcher saying “Pairing Dongle”. Wait for the pairing process to complete before disconnecting the APO-DG1. Up to two dongles can be actively used with a SW-220-TX-W.

## Guide Screen

The switcher uses a Guide Screen to convey the basic connection instructions for user access. The Guide Screen can be personalized to allow custom connection instructions on the switcher’s Web UI page.



## Troubleshooting

### No or Poor Quality Picture (snow or noisy image)

- Verify that power is being supplied to the transmitter and receiving device.
- Verify that all HDMI and HD Base T connections are not loose and are functioning properly.
- Verify that the HD Base T cable is properly terminated following EIA568B standard.
- Verify that the output resolution of the source and display is supported by this transmitter.
- Configure EDID Settings to a lower resolution.
- If transmitting 4K, verify that the HDMI cables used are 4K rated.

### No or Intermittent 3rd party Device Control

Verify that the IR and RS-232 cables are properly terminated following the Wiring and Connections section.

### Relays Not Functioning

Verify polarity of the relay connections



### Troubleshooting Tips:

Wyre Storm recommends using a cable tester or connecting the cable to other devices to verify functionality.

## Unable to Wirelessly Cast

- Ensure your device is connected to the correct Wi-Fi signal
- If a casting pin has been enabled on the switcher, ensure you are entering the correct value.
- APO-DG1: Ensure the dongle is properly paired to the switcher per the pairing instructions
- APO-DG1: Only use a direct connection to a PC. Do not use any USB adapters or hubs.



This equipment has been tested and found to comply with the limits for a Class B digital device, pursuant to part 15 of the FCC Rules. These limits are designed to provide reasonable protection against harmful interference in a residential installation. This equipment generates, uses and can radiate radio frequency energy and, if not installed and used in accordance with the instructions, may cause harmful interference to radio communications. However, there is no guarantee that interference will not occur in a particular installation. If this equipment does cause harmful interference to radio or television reception, which can be determined by turning the equipment off and on, the user is encouraged to try to correct the interference by one or more of the following measures:

- Reorient or relocate the receiving antenna.
- Increase the separation between the equipment and receiver.
- Connect the equipment into an outlet on a circuit different from that to which the receiver is connected.
- Consult the dealer or an experienced radio/TV technician for help.

Changes or modifications not expressly approved by the party responsible for compliance could void the user's authority to operate the equipment.

The distance between user and products should be no less than 20cm.



We declare that this device is in compliance with the essential requirements and other relevant provisions of Directive 2014/53/EU.

Manufacturer: Shen Zhen Proitav Technology Co.,Ltd

Address: 301-401, Building 16, Hejing Industrial Park, No.87, Hexiu west Road,Heping Community, Fuhai street, Baoan District, Shenzhen, China

Accessory Manufacturer: ShenZhen Tianweixun Wireless Technology Co., Ltd Adapter: Antenna

Address of Manufacturer: 9/F, Building 1, Guole Science and Technology Park, No. 1 Lirong Road, Dalang Street, Longhua New District, Shenzhen

Accessory Manufacturer: Dongguan NB Power Electronic Limited

Adapter: Power supply

Address of Manufacturer: No.365, South Dongkeng Road, Dongkeng Town, Dongguan City, 523443, P. R. China

The adapter shall be installed near the equipment and shall be easily accessible.

Accessory Manufacturer: Shenzhen Ohonda Technoligy Co., LTD

Adapter: Terminal block

Address of Manufacturer: Room 609, Block D, Hongtaifu Building, Zone No.34, Baoan District, Shenzhen

Operating temperature: 0°C to 45°C

Wi-Fi Operation Frequency: 2412MHz~2462MHz Maximum Power: 16.14dBm (E.I.R.P.)



## Warranty Information



WyreStorm Technologies ProAV Corporation warrants that its products to be free from defects in material and workmanship under normal use for a period of five (5) years from the date of purchase. Refer to the Product Warranty page on [wyrestorm.com](http://wyrestorm.com) for more details on our limited product warranty.

Copyright © 2022 WyreStorm Technologies ProAV Corporation  
[wyrestorm.com](http://wyrestorm.com) SW-220-TX-W Quickstart Guide | 220708  
**INT: +44 (0) 1793 230 343**  
**US: 844.280.WYRE (9973)**  
[support@wyrestorm.com](mailto:support@wyrestorm.com)

**Documents / Resources**

	<p><a href="#">WyreStorm SW-220-TX-W 2 Input 4K Presentation Switcher with Wireless Casting</a> [pdf] User Guide</p> <p>SW220TXW, 2A2CW-SW220TXW, 2A2CWSW220TXW, SW-220-TX-W 2 Input 4K Presentation Switcher with Wireless Casting, SW-220-TX-W, 2 Input 4K Presentation Switcher, 2 Input 4K Presentation Switcher, 4K Presentation Switcher, Presentation Switcher, Switcher</p>
	<p><a href="#">WyreStorm SW-220-TX-W 2 Input 4K Presentation Switcher with Wireless Casting</a> [pdf] User Guide</p> <p>SW220TXW, SW-220-TX-W, 2 Input 4K Presentation Switcher with Wireless Casting, SW-220-TX-W 2 Input 4K Presentation Switcher, 2 Input 4K Presentation Switcher, 4K Presentation Switcher, Presentation Switcher, Switcher</p>

**References**

- [WyreStorm - Professional Audio Visual Solution Provider](#)