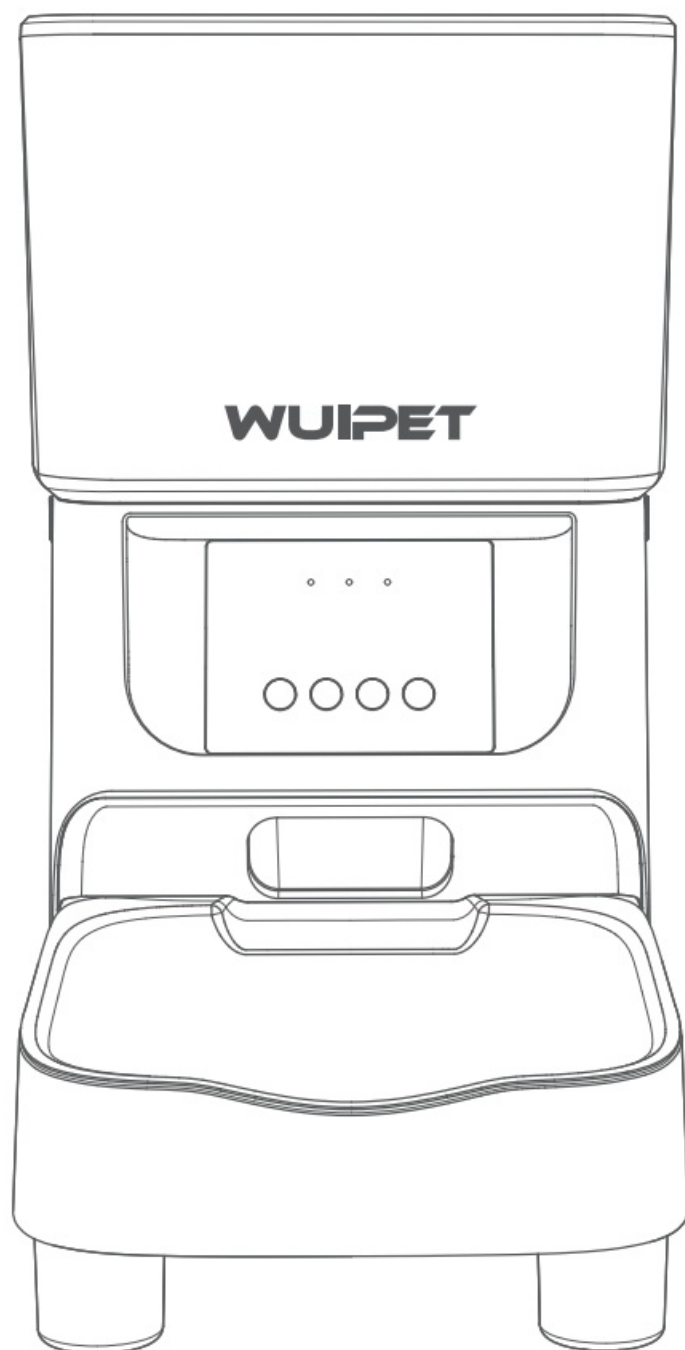




WUIPET DU4L-WC-01 WIFI Automatic Pet Feeder User Guide

[Home](#) » [WUIPET](#) » WUIPET DU4L-WC-01 WIFI Automatic Pet Feeder User Guide 

WUIPET DU4L-WC-01 WIFI Automatic Pet Feeder



Contents

- 1 Welcome
- 2 SAFETY PRECAUTIONS
- 3 IN THE BOX
- 4 PRODUCT DIAGRAM
- 5 BUTTONS AND DISPLAY OVERVIEW
- 6 LED Indicators
- 7 SET UP THE FEEDER
- 8 CONTROLLING VIA APP
- 9 CLEAN AND CARE
- 10 DIY Cardboard Cat House
- 11 Troubleshooting
- 12 SPECIFICATIONS
- 13 New to automatic feeder?
- 14 CUSTOMER SUPPORT
- 15 Documents / Resources
 - 15.1 References
- 16 Related Posts

Welcome

You and your fur friends were made for each other. We are keen on making pet parents and your fur kids' lives better. Your New Auto Feeder helps make life with your pet endlessly better and gives you peace of mind knowing your pet will be fed on time.

If we can do anything better, we would love to hear from you, stay connected with us via support@wuiPET.com

SAFETY PRECAUTIONS



Warning

- Dispose of all packaging materials properly. Some items may be packed in polybags; these bags could cause suffocation; Keep away from children and pets.
- Do NOT place any foreign object in the pet feeder.
- Do NOT allow small children to play with, in or around the pet feeder.
- To reduce the risk of injury, please keep close supervision when an appliance is used near children.
- Do NOT use the feeder with pets not able to reach the food tray or with any physical disability.
- Do NOT immerse the base part in water at any time as it may damage electronic components like the control panel.
- Do NOT use outdoors. Check operation frequently to be sure the unit is dispensing properly.
- Do NOT use wet, canned or moist food.
- Do NOT disassemble the unit other than as instructed in this Quick Start Guide.
- Do NOT use the feeder for anything other than its intended use.
- Only use attachments recommended or sold by the manufacturer. The use of attachments not recommended or sold by the manufacturer may cause an unsafe condition. Do NOT modify the pet feeder.
- Do NOT operate any appliance if the unit is malfunctioning or has been damaged. Do NOT attempt to repair the pet feeder by yourself. Contact our customer service immediately for further instructions.
- Always unplug when not in use and before cleaning.

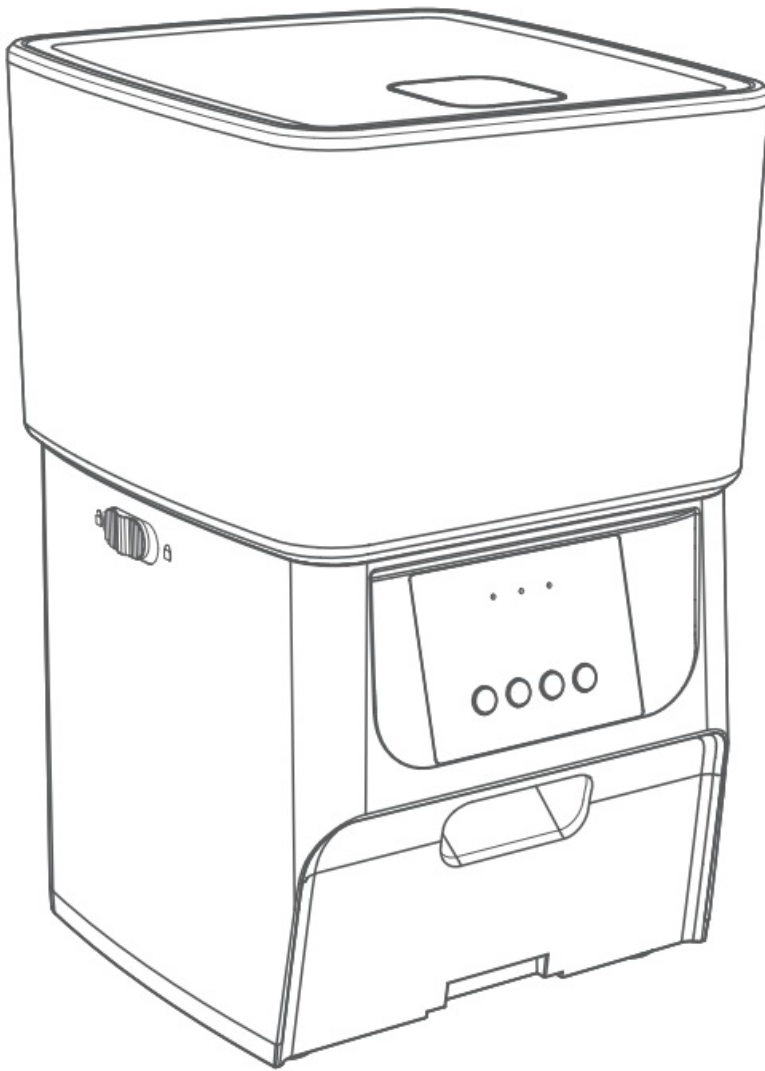
- Never pull on the electrical power cord to remove the plug from the wall outlet.
- If the plug of this device gets wet, turn off electricity to that wall outlet. Do NOT attempt to unplug.
- Examine the feeder after installation. Do NOT plug in if there is water on the power cord or plug.
- To avoid tripping, always position power cord out of the way of foot traffic.

Caution

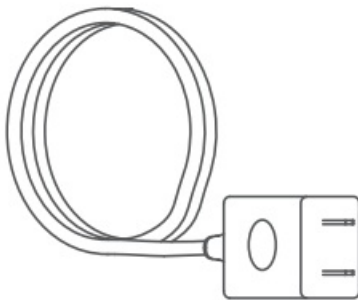
- Do NOT allow pets to chew on or swallow any parts. If you are concerned about the power cord, purchase a cord conduit (a hard plastic protector) at any hardware store to protect the power cord.
- If an extension cord is necessary, one unit with a proper rating should be used.
- Do NOT install or store the pet feeder where it will be exposed to weather or temperatures below 4°C / 39°F.
- Use alkaline D batteries to power. Do NOT use rechargeable batteries.
- Check the batteries regularly. Before leaving for extended time, always replace batteries with new ones.
- Do NOT lift the pet feeder by lid, food tank, or food tray. Lift and carry it using both hands and the base, while keeping the unit in an upright position.
- Suitable for dry food ONLY, with kibble size ranging from 2-12mm / 0.07-0.47in in diameter. Larger kibble may get stuck at the food outlet.
- Read and observe all important notices listed on the pet feeder and in the packaging.

IN THE BOX

- 1 x Automatic Pet Feeder



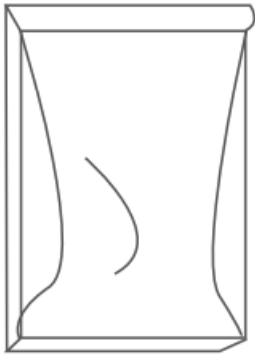
- 1 x Power Adapter



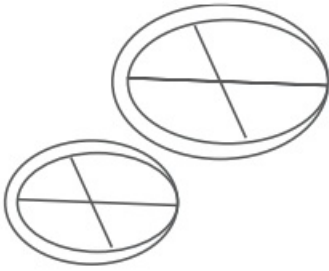
- 1 x User Guide



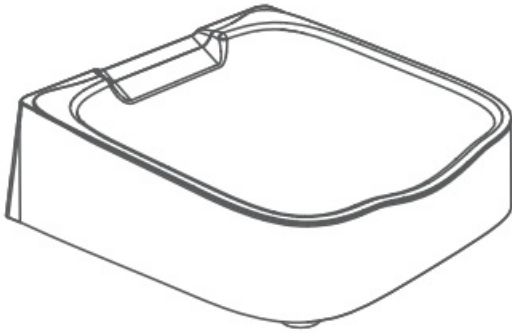
- 1 x Desiccant Bag



- 15 x2 Anti-slip Stickers



- 1 x Stainless Steel Bowl and Holder



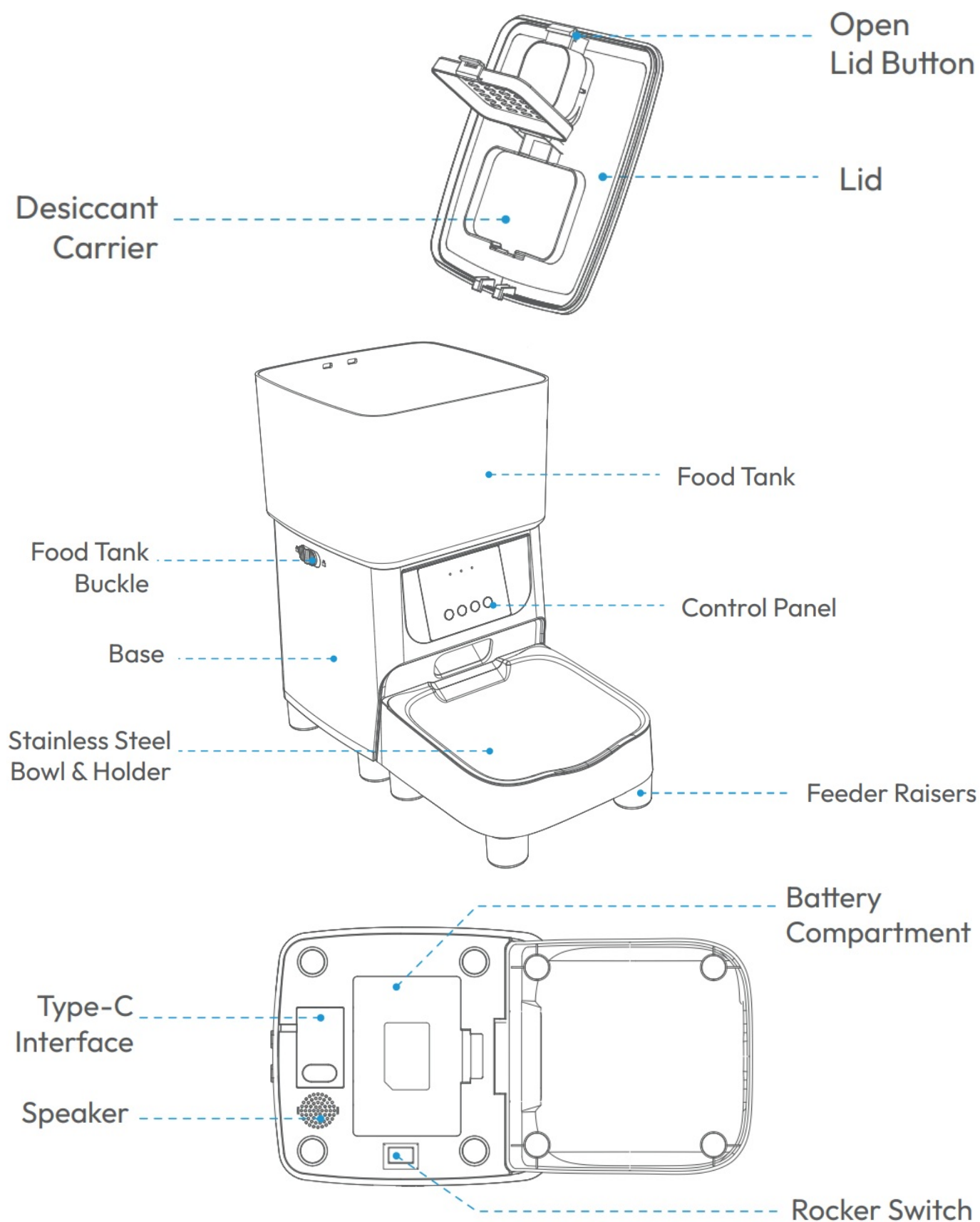
- 10 x 1inch Feeder Raisers



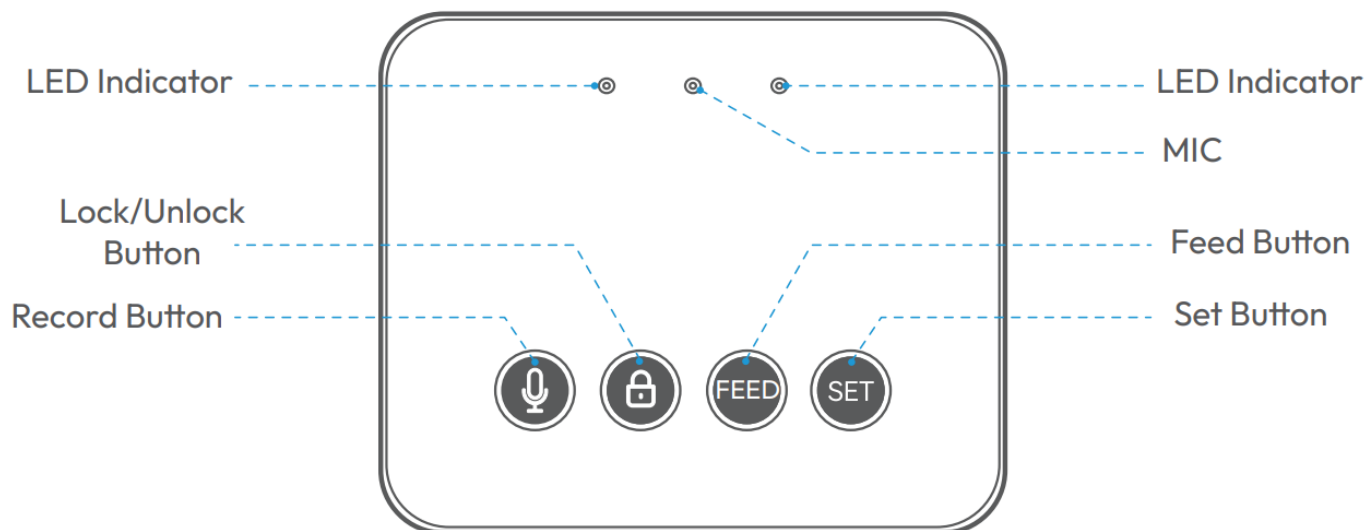
- 10 x 2inch Feeder Raisers



PRODUCT DIAGRAM



BUTTONS AND DISPLAY OVERVIEW



Recording Button

In the unlocked mode, press and hold the Record button, start recording after a beep is heard. Record your voice for less than 10s. Release the button, 2 beeps will be heard indicating it's saved.



Lock/Unlock Button

In the unlocked mode, press and hold for 6s to lock the system. Repeat to unlock.



Feed Button

Press to manually feed a portion of food.



Set Button

- When the device is not connected to the App, Press and hold for 7s to switch between Manual Mode and AP Mode.
- In the locked mode, press and hold for 6s to reset the device.

LED Indicators

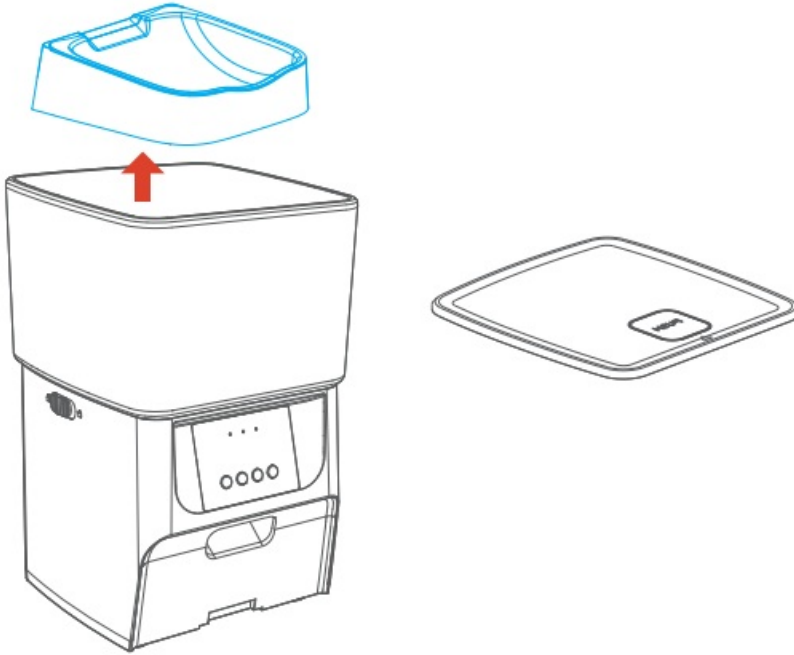
Blue	Flash every 0.5s	The Feeder is in Bluetooth or Manual mode, ready to connect with App.
	Slowly blink	The Feeder is in AP Mode, ready to connect with App.
	Stay solid	Connected to WiFi and fully operational.
Red	Off	Normal
	Blink	Food dispensing system error *Press and hold the set Button for 6s to reset device.
	Stay for about 6s	Resetting WIFI connection.

SET UP THE FEEDER

Warning: Please use the original 5V power supply.

Installation

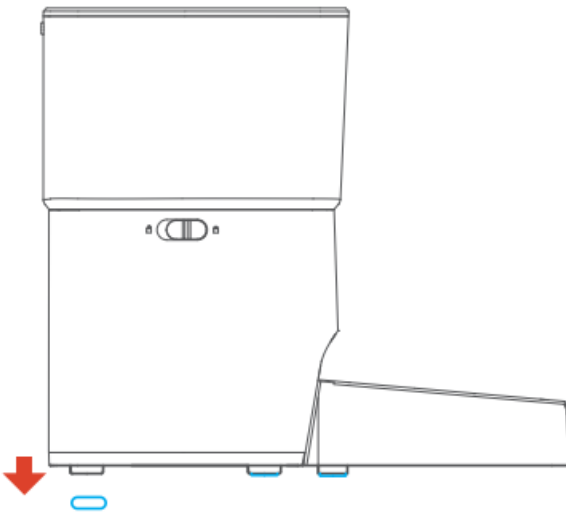
1. Take out the food bowl inside the food tank.



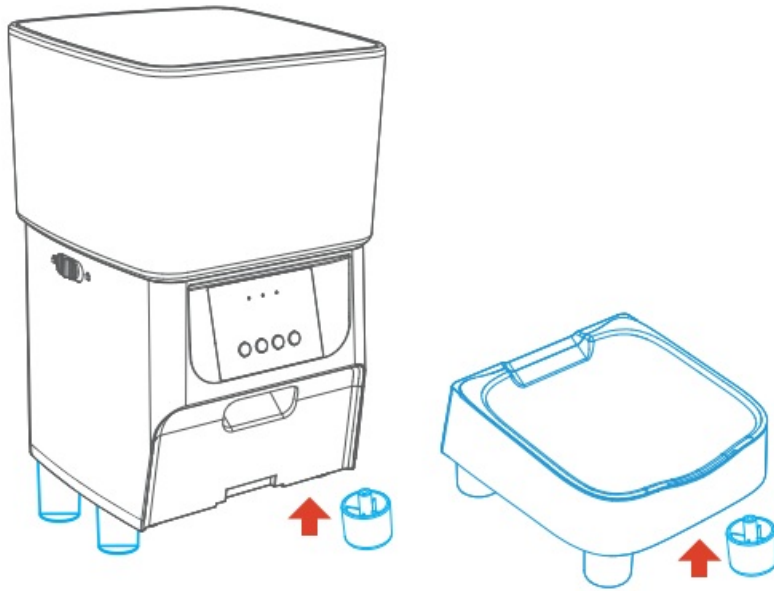
Note:

- To increase the height of the feeder, you need to perform these operations.

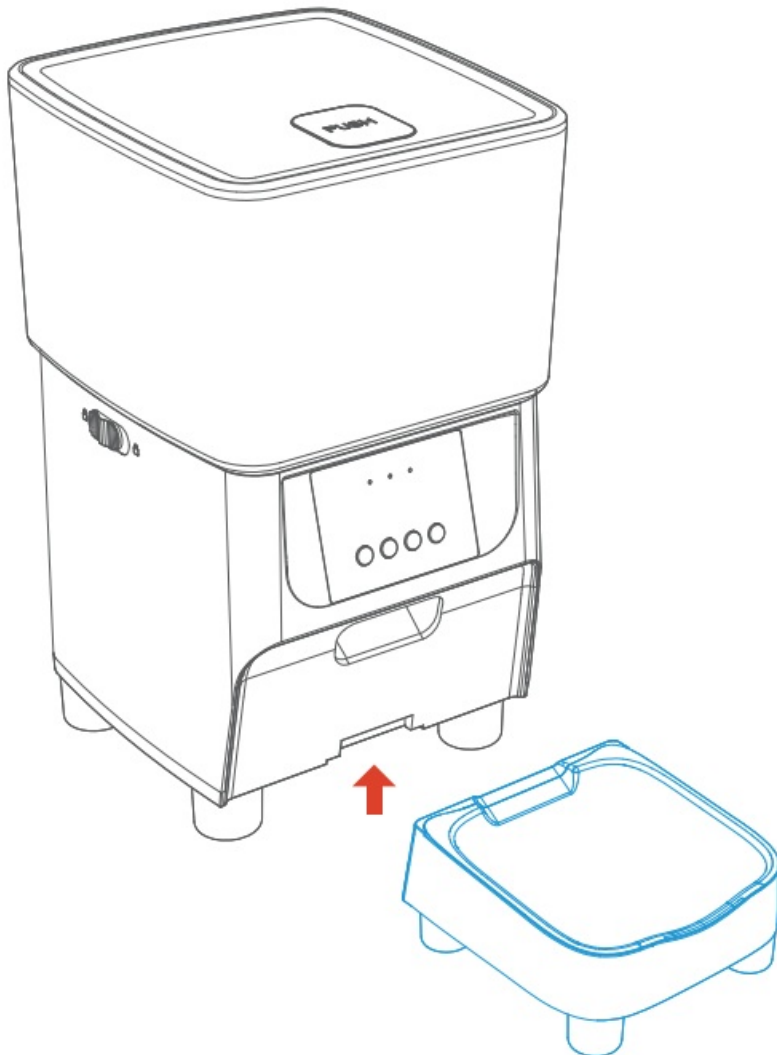
2. Remove the anti-slip stickers on the bottom of the base and food tray.



3. Choose the suitable height of feeder raisers you need (1 inch/ 2 inch), then put anti-slip stickers on the bottom of the raisers.
4. Install the raisers on the base and the food tray.



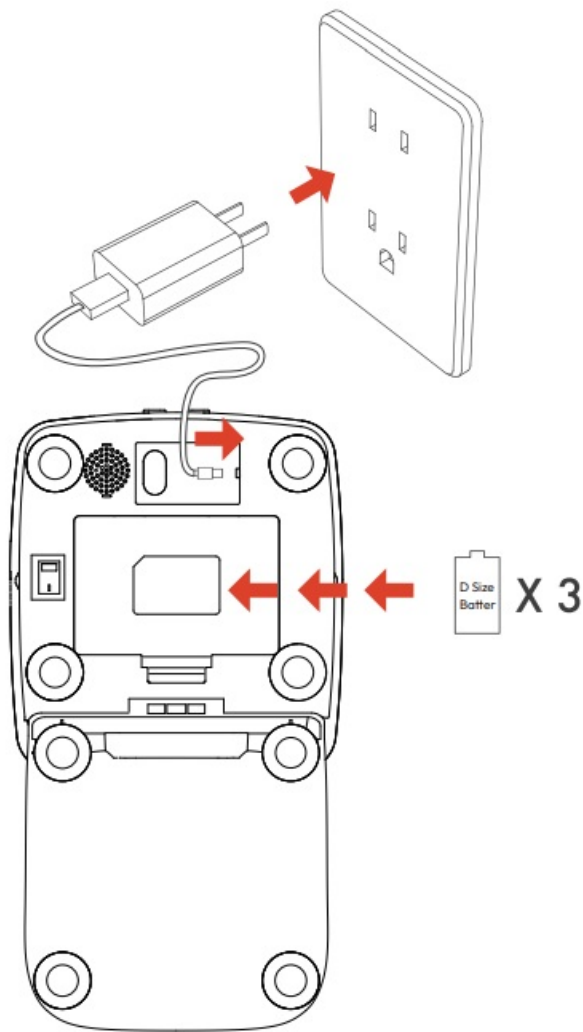
5. Place the feeder in a desired location. Check the food tank is in place.
6. Align the bulging of the food tray and holes in the base, and push upward to connect the two.



Connecting Power

1. Insert the 5V power adapter into a wall socket. Plug in the power socket of the feeder. There are 2 pillars near the power socket of the feeder, you can tie up a part of the USB cable around the pillars to prevent the cable from accidentally pulling out of the power socket.

2. Open the battery compartment at the bottom of the unit, and install 3 alkaline D batteries (not necessary) in case of power outage.
3. The LCD display will light up automatically indicating the feeder is on now.

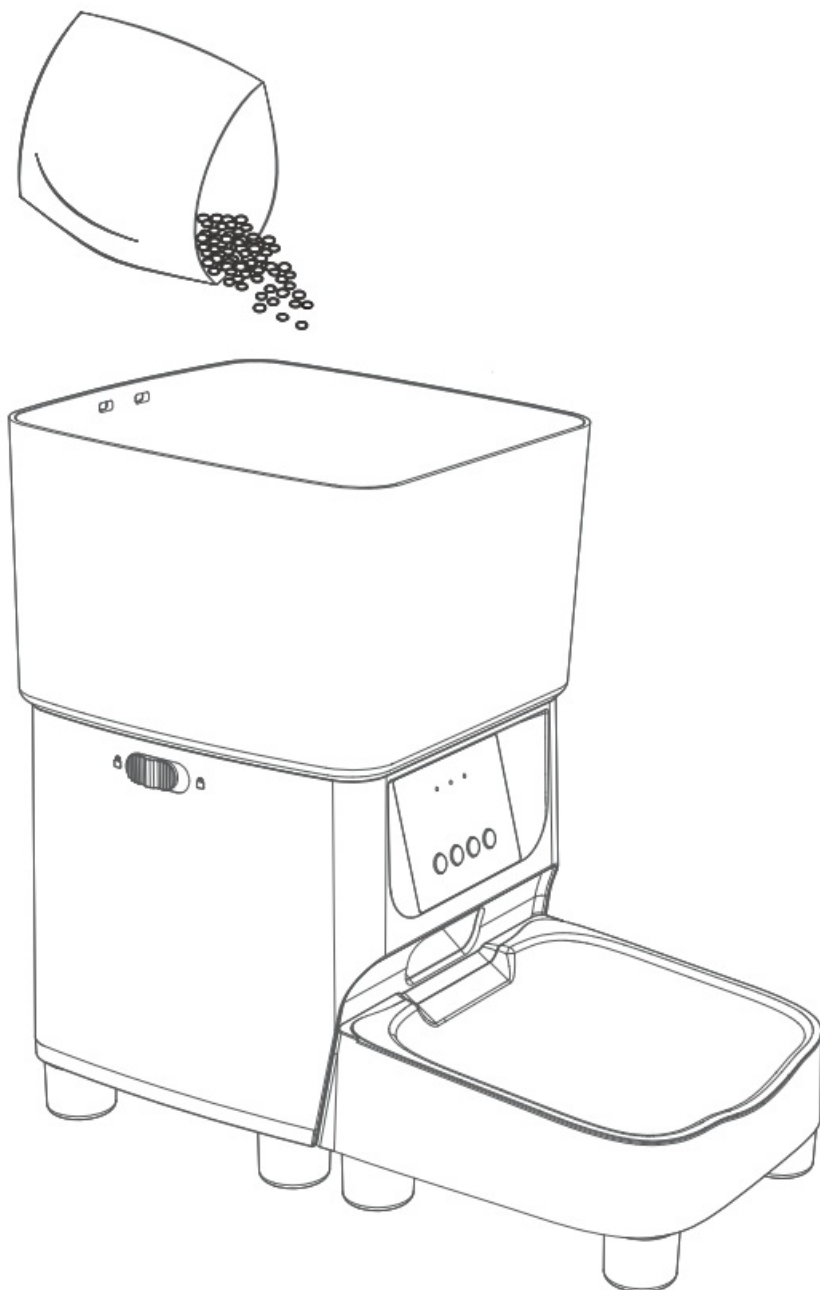


Notes:

- Batteries are NOT included.
- Before connecting to power, make sure all parts are clean and completely dry.
- The battery should power with an output of 4-5V; the battery level icon on the display blinks on a low battery level (4V).

Filling Food Tank

Fill food tank with dry pet food. Close the lid and the food will snap into place due to gravity.

**Notes:**

- Do NOT use canned, wet or moist pet food.
- Recommend kibble size ranging from 2-12mm/ 0.07-0.47in in diameter.

CONTROLLING VIA APP**System Requirements**

- iPhone on iOS 11.0 or later; smartphone on Android 6.0 or later
- Wireless router 2.4GHz [802.11b/g/n]
- High-speed internet connection

Before the Configuration

- Please use indoor only to avoid direct exposure to the sunlight.

- Please connect the feeder via 2.4GHz only. If your WiFi is 5GHz only, set it to be compatible with 2.4GHz mode.
- The WIFI password is composed of no more than 12 digits and letters. No special symbols are supported.
- Please keep the feeder close to the router. The distance in a range of 6 meters without wall barriers is recommended.
- If the configuration fails, please power off and restart the feeder (press and hold the set button for 6s), then wait for about 2mins to re-configuration.

How the System Works

The WUIPET WIFI Automatic Feeder connects to your home's wireless router and allows you to program and monitor your pet's meals from anywhere, right from your smartphone with the Smart Life app. Use the app to schedule your pet's meal times and portion sizes, view the last 7 days of feeder activity, and even dispense a meal remotely. Smartphone alerts let you know when your pet has been fed for added peace of mind. Delivering a convenient lifestyle to you and helping your pets become their best, the WUIPET WIFI Automatic Feeder keeps you connected to your pet's feeding routine wherever you are!

Download the App & Log In

- Scan the QR code or search for "Smart Life" on App Store or Google Play to download the app.
- Sign up or Log in to your account.



App Store



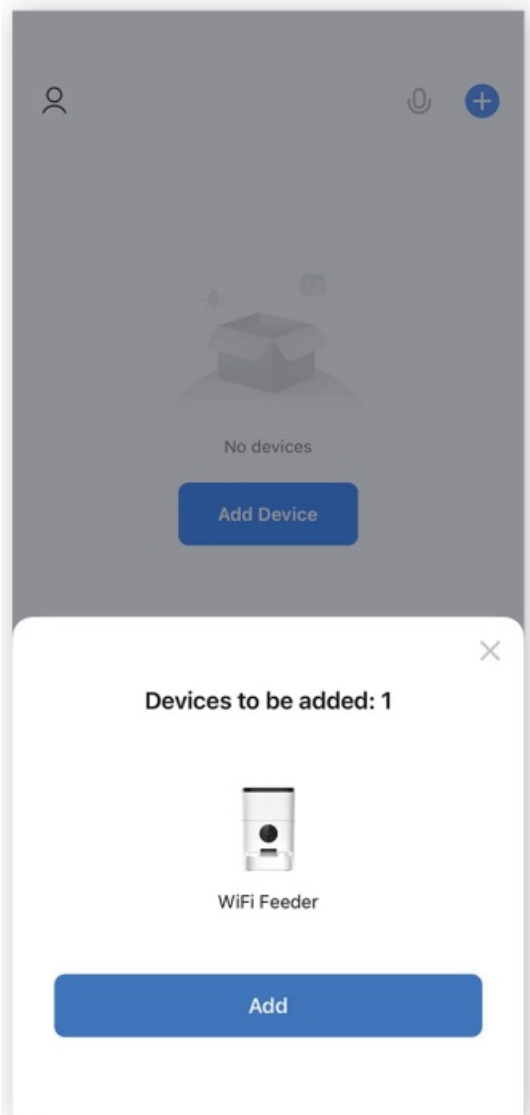
Google Play



Three Ways to Connect Your Feeder with APP

A. Configuring via Bluetooth Mode

- Turn on the Bluetooth on your phone, open the App, select Home page, tap “Add Device” or “+” in the upper right corner.



- To add the auto-pop-up device by entering WIFI account and password.

×

Enter Wi-Fi Information

Choose Wi-Fi and enter password

📶

LUBON-AP01

↔

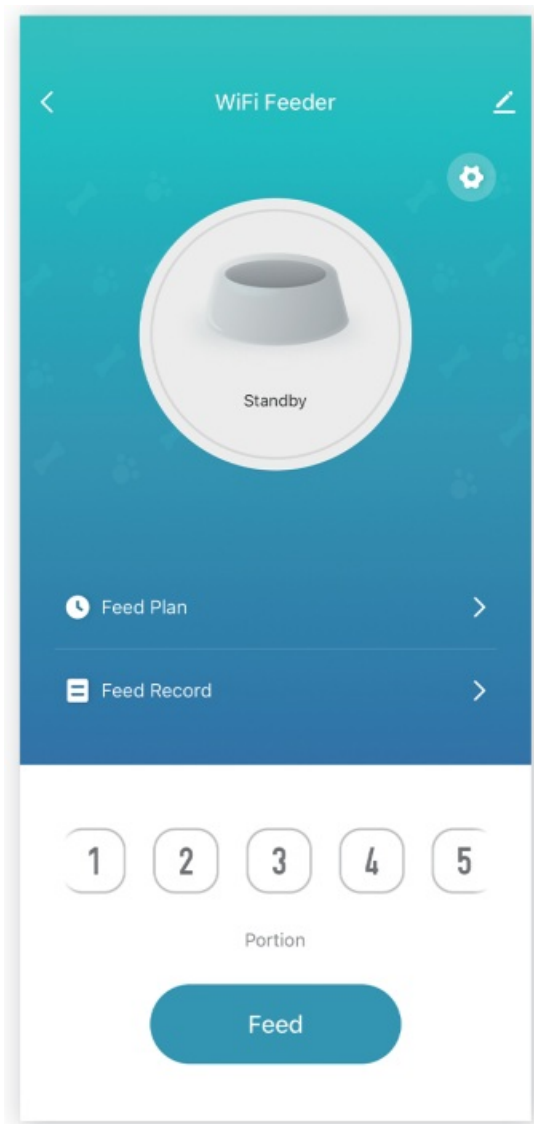
🔒

66666666

👁

Next

- Feeder Connected, start to set the meal times and portion sizes.



B. Configuring via Manual Mode

- Add the device via “Pet Feeder” in Small Home Appliances.

C. Configuring via AP Mode

- Note: Please make sure the Bluetooth is turned off on your mobile before starting the AP mode connection.
- When the blue LED indicator flashes, press and hold the SET button for 6s until 3 beeps are heard. The LED indicator will turn to blink slowly. Now the feeder is under AP mode.
- Open the app on your mobile, tap Add Device → Small Home Appliances → Pet Feeder, tap the icon and enter your WiFi name and password, click “Next” and “Confirm the indicator is blinking”, select “Blink Slowly”. Then go to the WiFi connection interface on your mobile, find the device “smart life-xxxx” and tap to connect. Return to the app and wait for connecting.

Note:

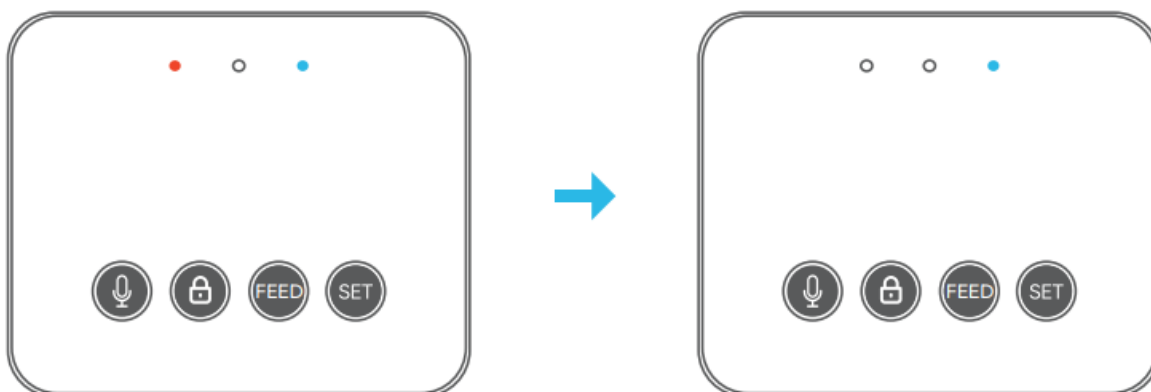
- Device name: WIFI Feeder
- Connect the Feeder via 2.4GHz only, if your WIFI is 5GHz, please set it to 2.4GHz before the connection.
- If it still fails connecting, please contact our Support Team.

Scan QR code for the operation video



Reset Feeder on App

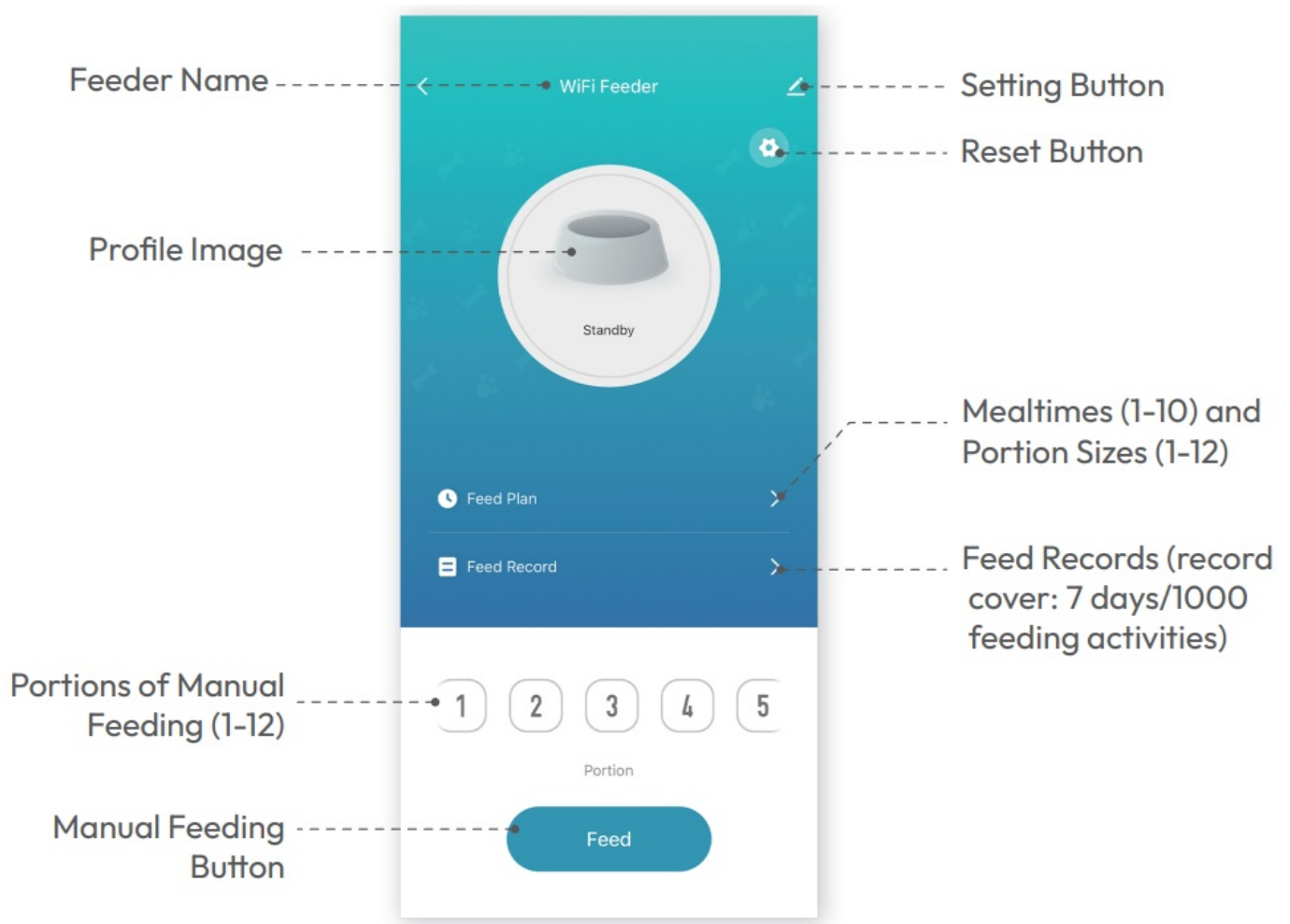
- Enter Setting on Control Center, Select Factory Reset.
- 3 beeps will be heard, wait for about 7s until the blue light starts to flash slowly and your device is ready for re-connection.



Share Your Feeder

Enter Setting, select Share Device, add Sharing Via Smart Life Account Name.

Control Center on APP

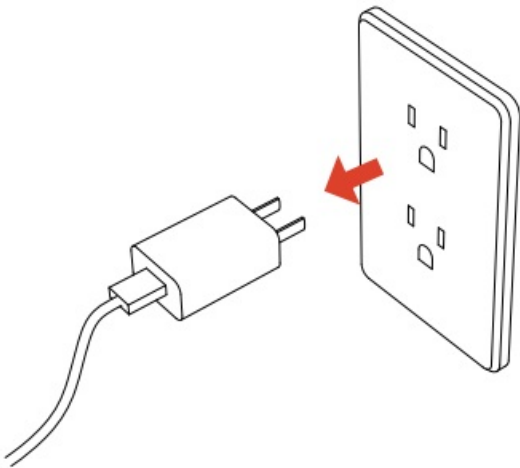


CLEAN AND CARE

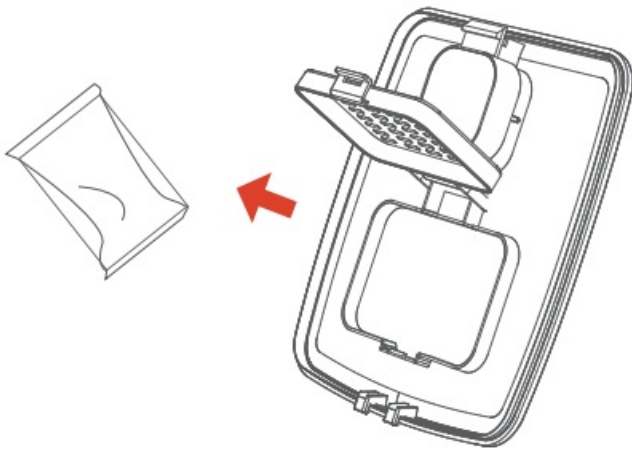
- It's recommended to clean the feeder regularly for the health of your pet.
- The washable parts are as follows: lid, food tank, stainless bowl, bowl holder feeder raisers.

Clean the lid, food tank, food tray

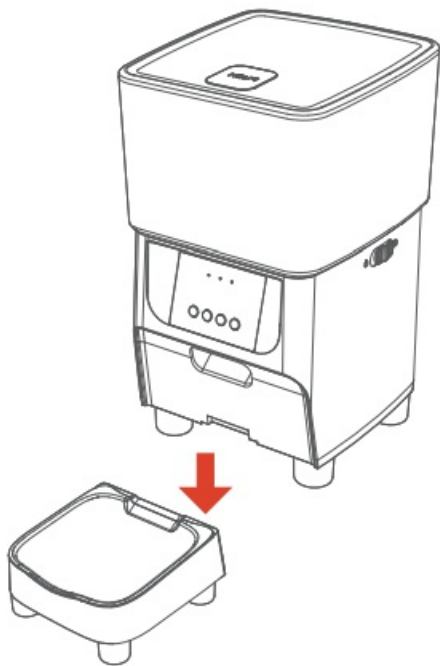
1. Disconnect power before cleaning.





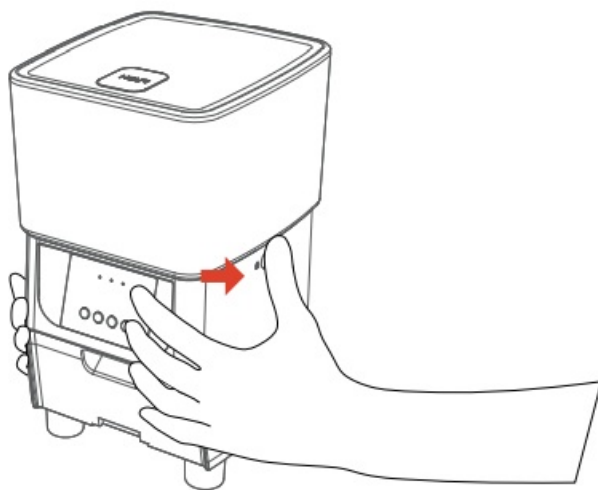
2. Remove the lid and take out the desiccant bag in the carrier under the lid.



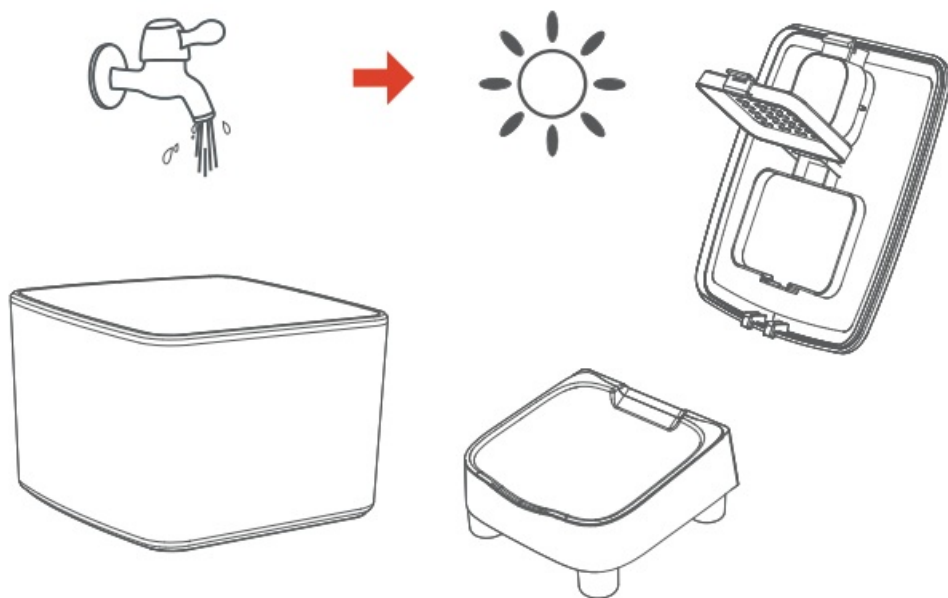
3. To remove the food tray, press down the stainless steel bowl with holder.



4. To remove the food tank, use your thumbs to toggle the switch from  to  on both sides, then push upwards the tank.



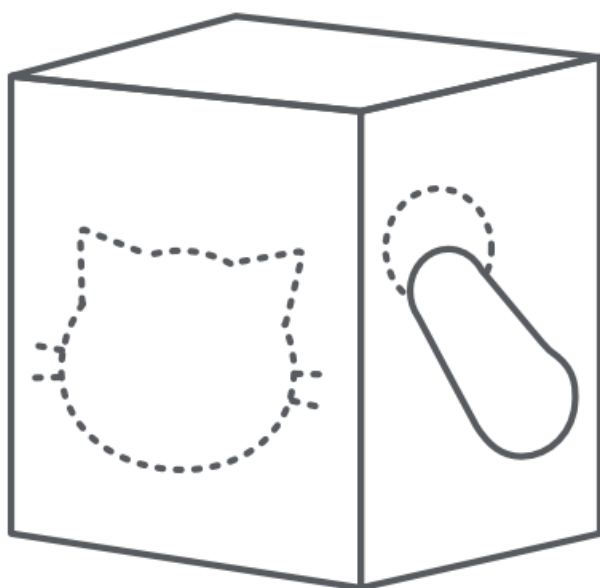
5. Rinse and air dry the lid, food tank, food tray thoroughly before refitting them to the machine.



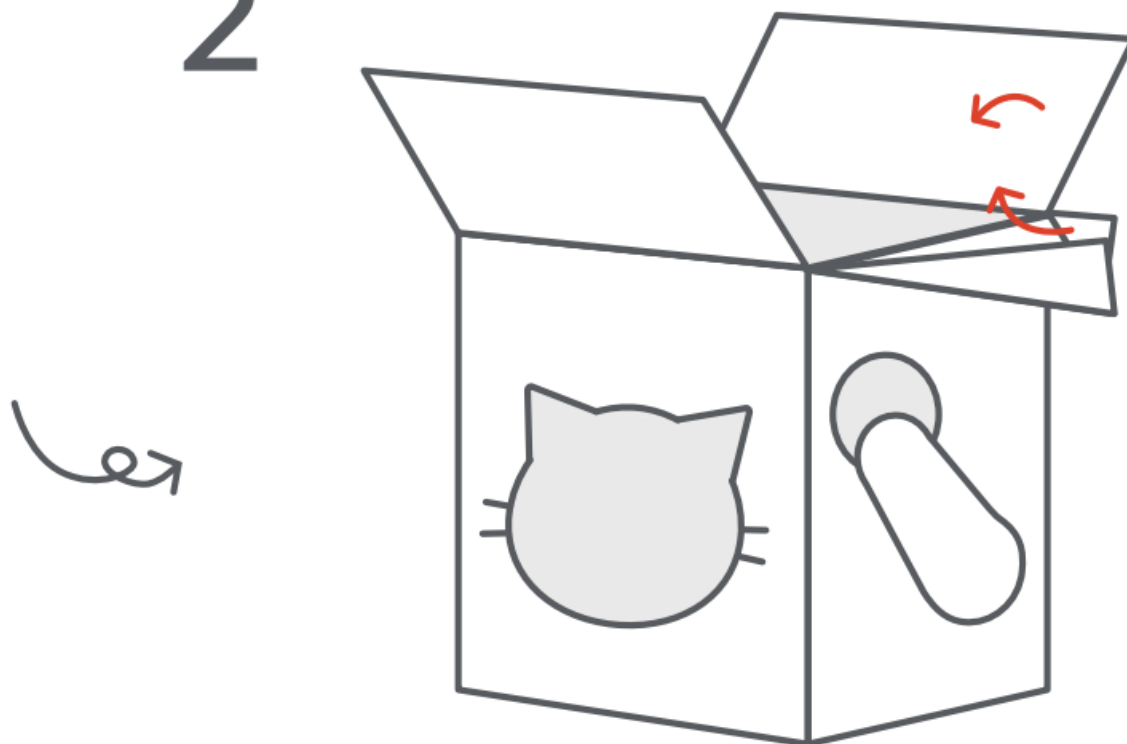
DIY Cardboard Cat House

It's a widely known fact that cats love boxes. To them, no toy in the world, no matter how expensive or fancy it may be, compares to a simple cardboard box. Let's transform this box into a cat house.

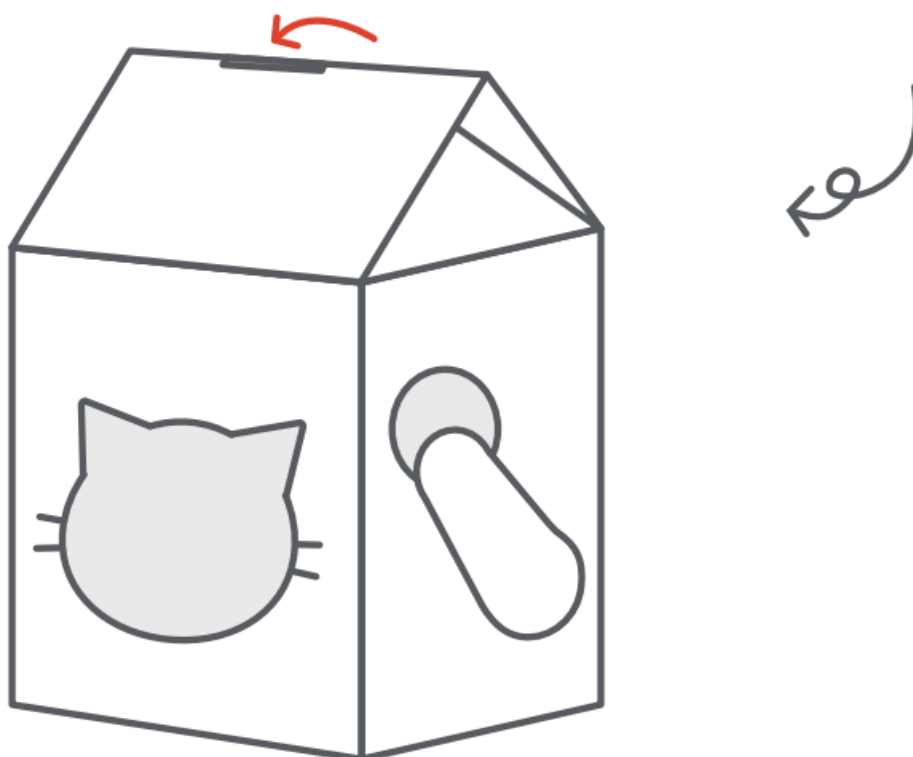
1



2



3



Still don't know how to DIY Cat house?

Visit the YouTube channel "WUIPET" or Scan QR codes below for the feeder operation video.



Play Audio

Troubleshooting

Problem	Solution
---------	----------

I can't configure the feeder on my mobile.	<ul style="list-style-type: none"> • Reset the device. In the locked mode, press and hold the Set Button for 6s to reset. • The router is not connected to the network. • WiFi cannot be a hidden network. • incorrect account and password format. • Use only number and letter for username and password, 12 digits at most. • 5G not supported – Please use 2.4G wireless network. • Application problem – Some program conflicts may happen. Please restart your mobile. • The distance between the feeder and the router is too far, or there is an obstacle between the two. • The network connected to the router is unstable.
Feeder appears disconnected from WIFI.	Weak disconnection – Please check that the distance between your feeder and router is no more than 10m / 33ft, and no concrete walls or too many obstacles between them. Otherwise the WiFi network can be weak and cause unstable connection.
The food won't come out. Or didn't come out enough food.	<ul style="list-style-type: none"> • Please be sure to fill in with dry food; kibble size should range from 2-12mm / 0.07-0.47in in diameter. • Please make sure there is enough food in the granary. • Please check the kibble in the granary is not stuck together due to powder or moisture. • Please shaking the granary to make the food in the granary more fit with the grain outlet, so that it will dispense more correct amount of food. • Check whether any foreign objects are placed- disassemble the food tank and check the chute. Also check the food outlet. • Check whether it's low battery level – whether the power adapter is connected or there is any outage when no battery is installed.
Food volume for each portion is not the same.	The first few portions may vary, and it doesn't mean a faulty equipment. After about 6 feedings it should be almost even.
How to reset the device?	<p>A. In the locked mode, press and hold their Set Button for 6s to reset the device.</p> <p>B. Enter Setting on Control Center on the APP, Select Factory Reset.</p>
How to delete the recording voice?	In the unlocked mode, press and hold the Recoding button, release the button immediately once a beep is heard.

SPECIFICATIONS


Model	DU4L-WC-01
Food Tank Capacity	4 liters (17 Cups)
Power	Dc 5V power adapter; 3 x alkaline D batteries(not included)
Power Adapter	AC110-240V input, DC 5V output
Working Current	Avg.80mA
Operating Temperature	-30°C-50°C/-22°F -122°F
External Socket	5.5mm power socket
Net Weight	1.54kg / 3.39lbs
Dimensions	18.9 x 17.5 x 28.7cm / 7.4 x 6.9x 11.3in
WIFI Standards	802.11 b/g/n
Wireless Frequency	2.4GHz (channel 1-14)
Encryption	WPA/WPA2
Radiation Power	+20dBm
System Supported	Android & iOS

New to automatic feeder?


As the auto feeder specialists, we are here to provide you with help and guidance at every step of your feeding journey.

Introducing Your Pet to the Automatic Feeding

Location Is Key

Place the Auto-Feeder next to the current food bowl(s). Set it up, and press “” button to dispense some familiar food. Do not start a feeding schedule yet. Give your pets a day or two to explore the Auto-Feeder. If your pets show no interest, entice them to approach the Auto-Feeder by using some treats in the Food Bowl.

Introduce Automatic Feeding

Once you notice that your pets have eaten from the Auto-Feeder, press the “” button while your pets are in the room with you so they can observe the food dispensing and become familiar with the sound of the feeder while you are there to reassure them.

Set Your Automatic Feeding Mode

Take away your pets' old food bowls and set your choice of Automatic Feeding Mode. For the next few days, keep an eye on your pet and the Auto-Feeder to confirm that your pet is eating comfortably from the unit.

Our story begins with three cats named Wally, Uri, and Izzy.

Wally was an elderly cat that grew up with many digestive and spinal problems. He struggled to eat and often skipped mealtime as a result of his chronic discomfort hunched over his bowl of food. Uri was a stray cat abandoned in a park, clearly in need of immediate attention and nurturing, as she was weak from a lack of food. Izzy's new owner found it difficult to establish healthy eating patterns. She was a young pup, and her owner worried she wasn't getting the sufficient nutrients needed to grow. It wasn't until Wally's owner Jada built her own cat feeder to alleviate his pain that he began experiencing fuss-free feeding, and his digestive issues instantly resolved. Wally's story, along with Uri's and Izzy's, emphasized a need for high-quality, science-backed solutions that catered to all dogs and cats, regardless of their circumstances.

Serving Pets the Absolute Best

We give a voice to pets, providing problem-solving products designed to meet their changing needs and establish well-balanced relationships between pets and their owners.

Simply put, we steadfastly believe pet deserves high-quality care. So whether your furry friend struggles with medical conditions or has poor eating habits, we design our products to enhance any circumstance.

Prioritizing proven techniques and ingenious designs, our game-changing solutions anticipate needs and leave nothing to be desired, making us your go-to for functional pet products that foster healthy, happier lives.

What Sets Us Apart Relationship-Driven:

We strive to strengthen the bonds between owners and their pets with intuitive products that prioritize animals' comfort and pet owners' convenience.

Safety:

Animal safety is our number one priority. Our products undergo rigorous quality assurance to ensure your pet is protected at all times, granting owners total peace of mind.

Science-Led Approach

At WUIPET, we believe the better we know our pets, the better we live together. So, we opt for a science-led method that considers animal genetic and behavioral data, allowing us to create solutions that address numerous concerns. Our team of experts continues to educate themselves on what your furry friends need to thrive.

Uncompromising Research

With us, you can rely on us to put in countless hours of research to make well-informed decisions at every step of our process.



Testing & Transparency:

You deserve to know what your pet is exposed to on a regular basis; we honor your trust by maintaining a transparent approach that keeps owners informed on the best solutions for their pets.

Ethical Responsibility:

As animal advocates, we feel it's our responsibility to help foster a better world for them to thrive. We aim to be a voice for animals by supporting animal protection campaigns and regularly donating to well-known organizations that prioritize the safety and health of stray animals.

To further our contribution, we abstain from purchasing from breeders and remain steadfast supporters of adoption. In fact, nearly a hundred stray animals have been adopted by the WUIPET founder and employees. You deserve to know what your pet is exposed to on a regular basis; we honor your trust by maintaining a transparent approach that keeps owners informed on the best solutions for their pets.



If you are not happy with our product, feel free to return it to Amazon for full refund.

If you have a question, reach out to us. We are here for you.



CUSTOMER SUPPORT

To get the most protection out of your warranty, please register your products within 30 days at www.wuipet.com. By registering and keeping your receipt, you will enjoy the product's full warranty and should you ever need to contact the Customer Care Centre, we will be able to help you faster. WUIPET will never give or sell your valuable information to anyone.



support@wuipet.com



www.wuipet.com

WUIPET

Documents / Resources



[WUIPET DU4L-WC-01 WIFI Automatic Pet Feeder](#) [pdf] User Guide

DU4L-WC-01, DU4L-WC-01 WIFI Automatic Pet Feeder, WIFI Automatic Pet Feeder, Automatic Pet Feeder, Pet Feeder, Feeder

References

-  [Wuipet - Fostering Connections! Smart Bird Feeder With Camera – wuipet](#)
- [User Manual](#)

[Manuals+](#), [Privacy Policy](#)

This website is an independent publication and is neither affiliated with nor endorsed by any of the trademark owners. The "Bluetooth®" word mark and logos are registered trademarks owned by Bluetooth SIG, Inc. The "Wi-Fi®" word mark and logos are registered trademarks owned by the Wi-Fi Alliance. Any use of these marks on this website does not imply any affiliation with or endorsement.