



WRIGHT V444-2 Push Button Handle Heavy Duty Instructions

[Home](#) » [WRIGHT](#) » WRIGHT V444-2 Push Button Handle Heavy Duty Instructions 

Contents

- [1 WRIGHT V444-2 Push Button Handle Heavy Duty](#)
- [2 Product Information](#)
- [3 Product Usage Instructions](#)
- [4 NEW INSTALLATION INSTRUCTIONS FOR HEAVY DUTY PUSH BUTTON LATCHES](#)
- [5 ASSEMBLE LOCK BUTTON \(FOR KEYED VERSIONS ONLY\)](#)
- [6 Documents / Resources](#)
 - [6.1 References](#)



WRIGHT V444-2 Push Button Handle Heavy Duty



Product Information

The Heavy Duty Push Button Latch is a durable and reliable door latch designed for heavy-duty applications. It features a lock button for added security (keyed versions only) and is easy to install. The latch is made of high-quality materials to ensure long-lasting performance.

Specifications

- **Door Thickness:** 1-3/4" (44.45 mm) to 2" (50.8 mm)
- **Screw Selection:** 6-32 THD

Tools Required

- Phillips Screwdriver
- 5/16 Drill (7.9 mm)
- Pliers (Qty 2)

Warranty

The Heavy Duty Push Button Latch comes with a full one-year warranty. For warranty details, to make a warranty claim for repair or replacement, please visit www.hampton.care or contact Hampton Care at 1-800-562-5625. Please retain the receipt and be prepared to provide it for warranty claims.

Product Usage Instructions

New Installation Instructions

1. Determine the thickness of the door.
2. Using a Phillips screwdriver, select the appropriate screws from the screw selection chart.

3. Drill installation holes, ensuring that the latch will not interfere with entrance hardware.
4. Place the drill template on the door, tape it down, and mark the hole centers.
5. Drill holes according to the marked centers.
6. Assemble the lock button (for keyed versions only) by orientating the flat surfaces.

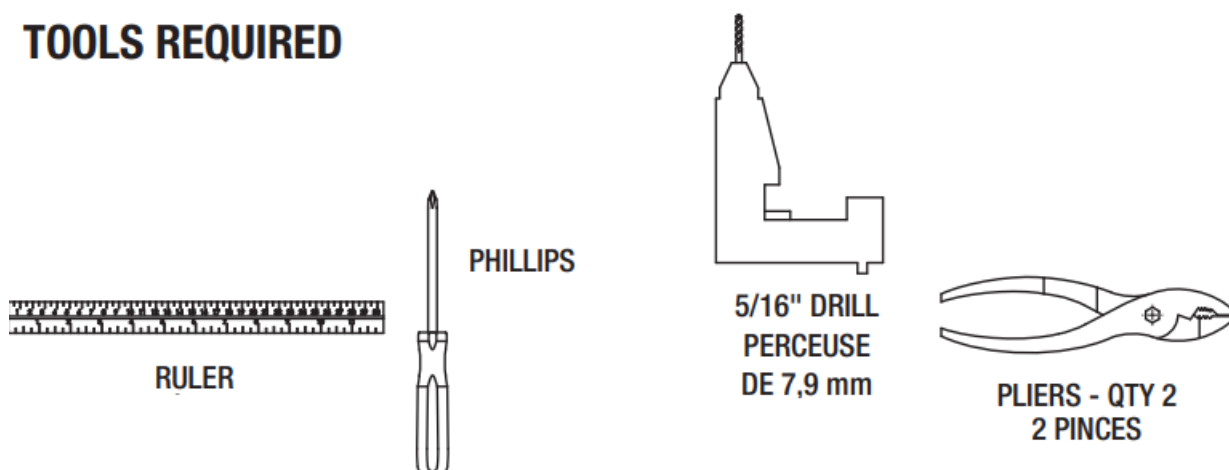
Replacement Installation Instructions

1. Determine the spindle length.
2. Verify the door hole pattern.
3. Assemble the door latch by aligning the arrow to the door face and breaking off the spindle at the marked point.
4. Verify the strike.

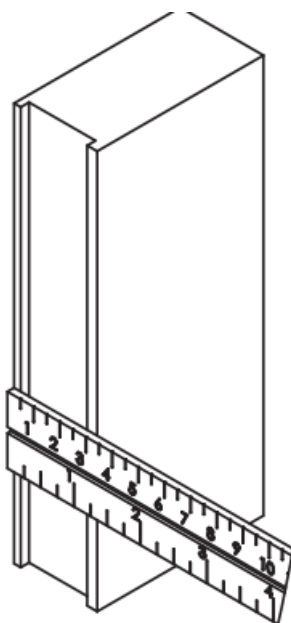
Note: If the hole pattern does not match, refer to the New Installation instructions in Step 4.

NEW INSTALLATION INSTRUCTIONS FOR HEAVY DUTY PUSH BUTTON LATCHES

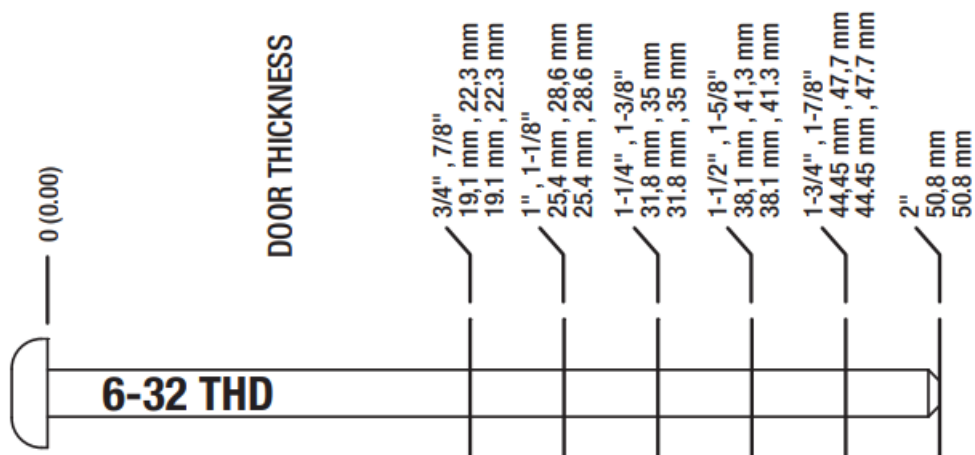
TOOLS REQUIRED



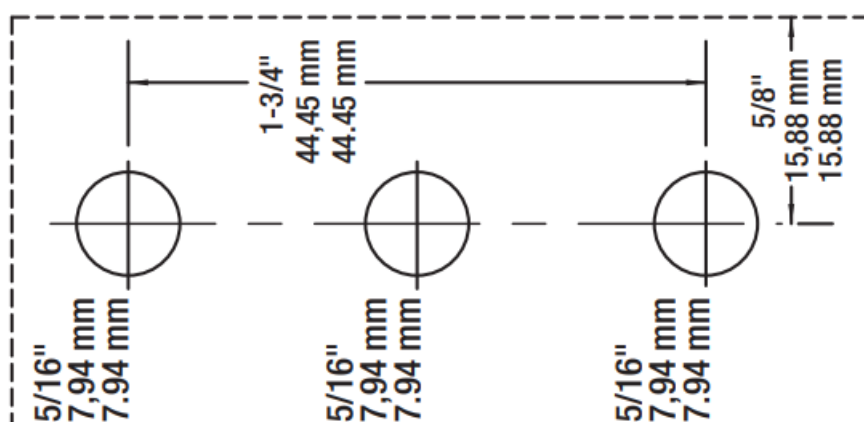
DETERMINE DOOR THICKNESS



SCREW SELECTION CHART

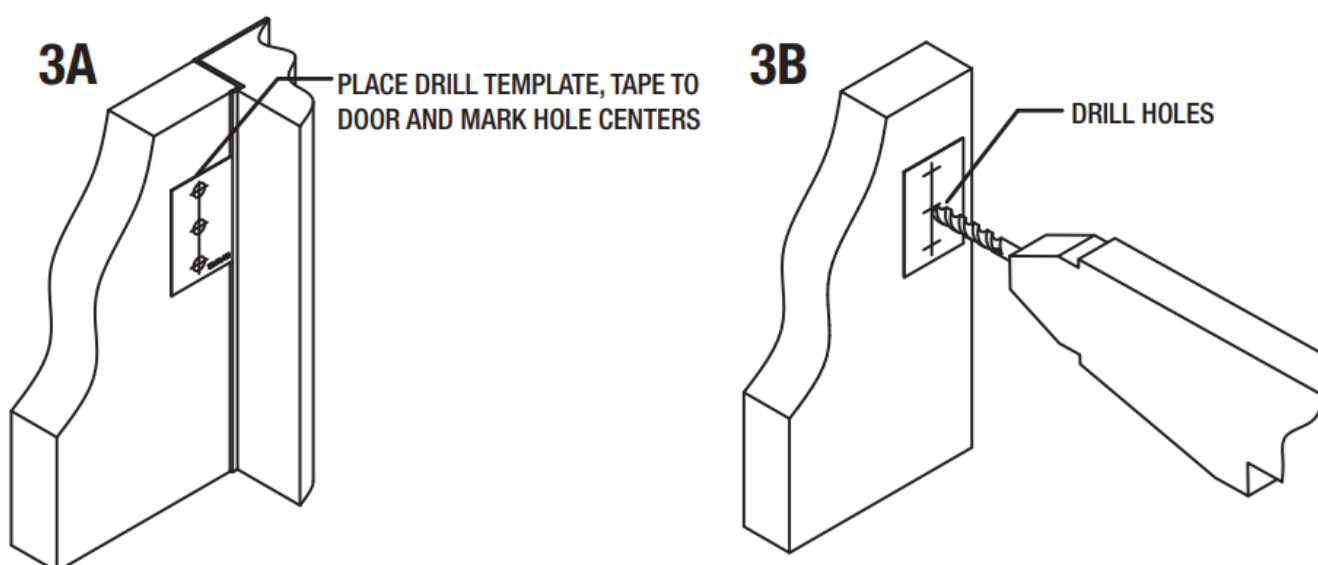


TEMPLATE

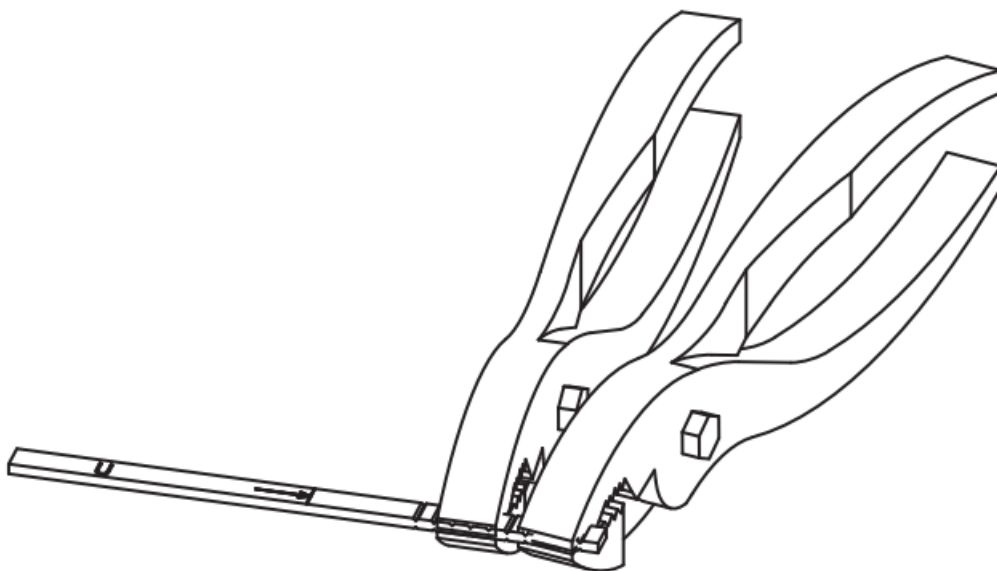
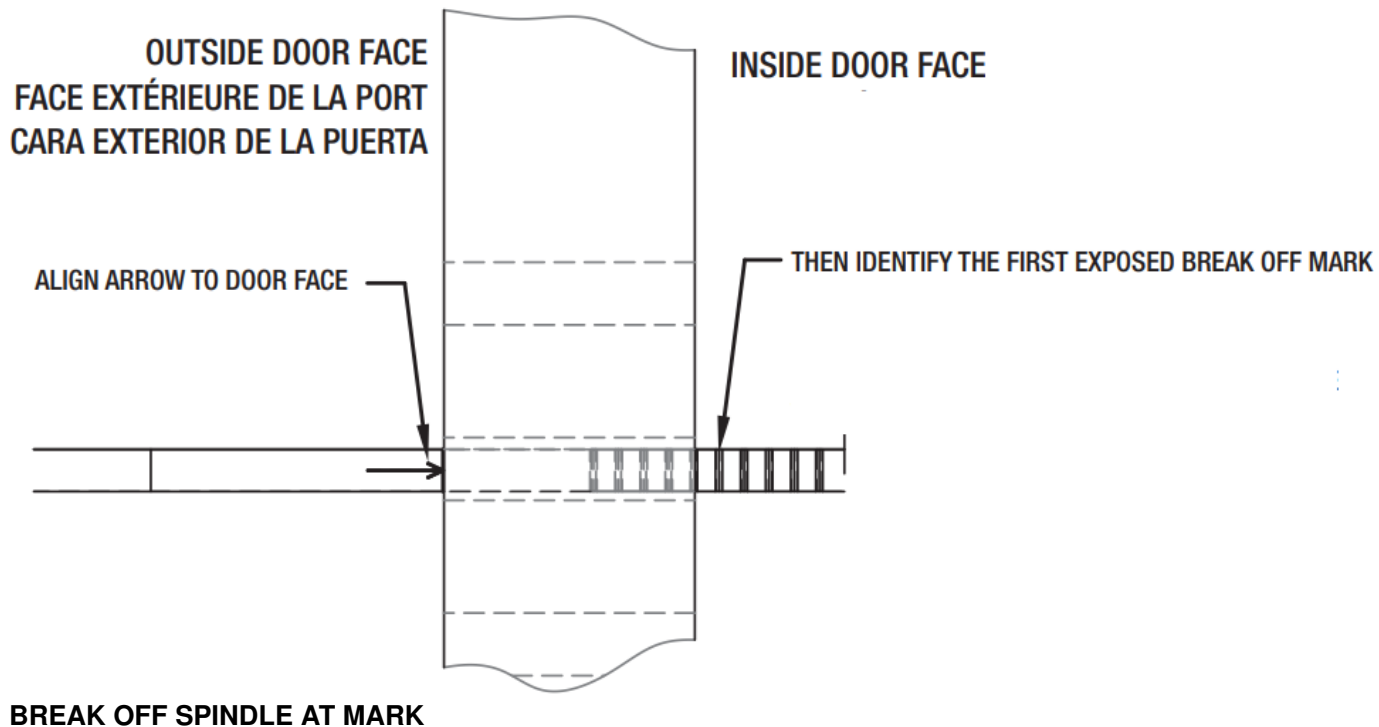


DRILL INSTALLATION HOLES

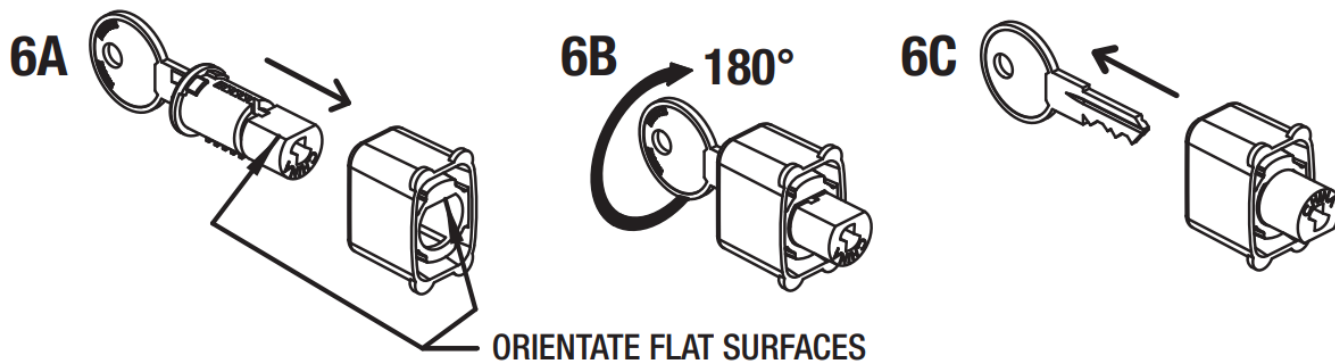
CAUTION: LOCATE INSTALLATION SO THAT LATCH WILL NOT INTERFERE WITH ENTRANCE HARDWARE



DETERMINE SPINDLE LENGTH

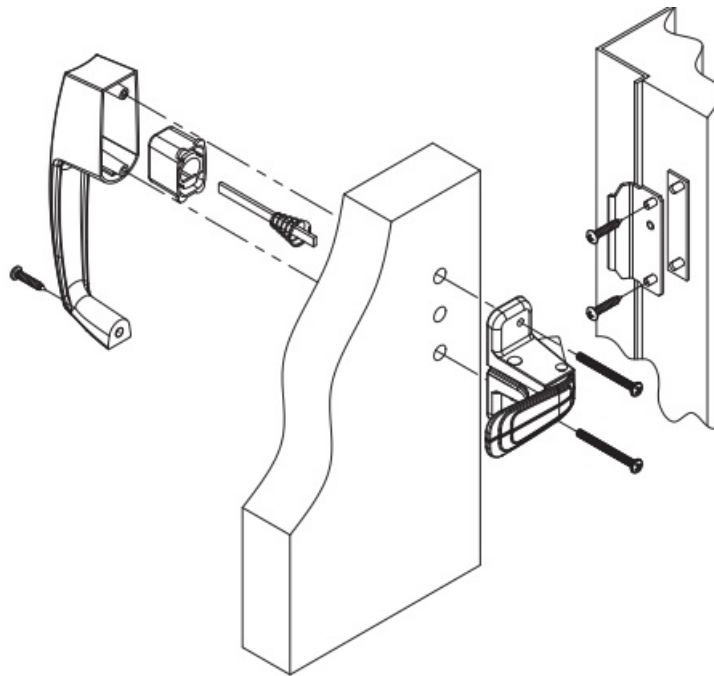


ASSEMBLE LOCK BUTTON (FOR KEYED VERSIONS ONLY)

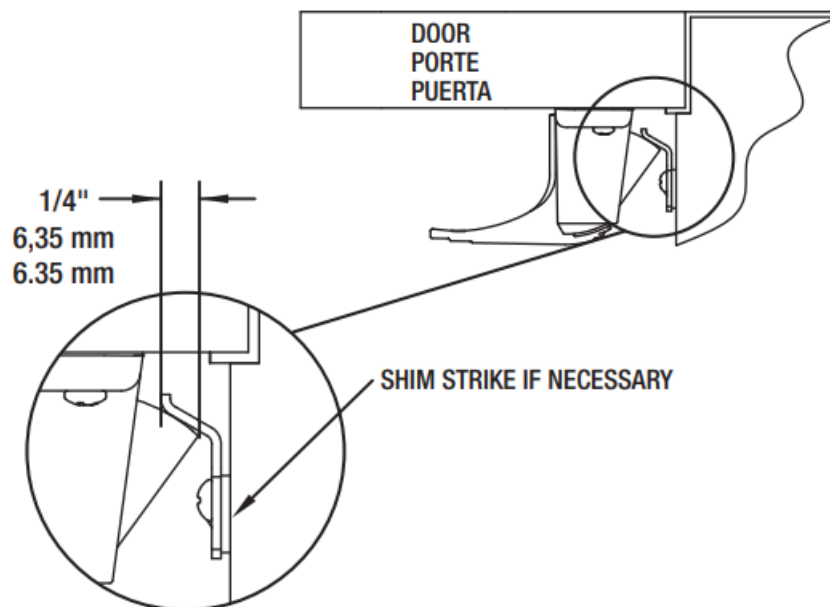


ASSEMBLE DOOR LATCH

NOTE: The handle styles illustrated may vary by model.



VERIFY STRIKE



OUTILS REQUIS HERRAMIENTAS NECESARIAS



RULER

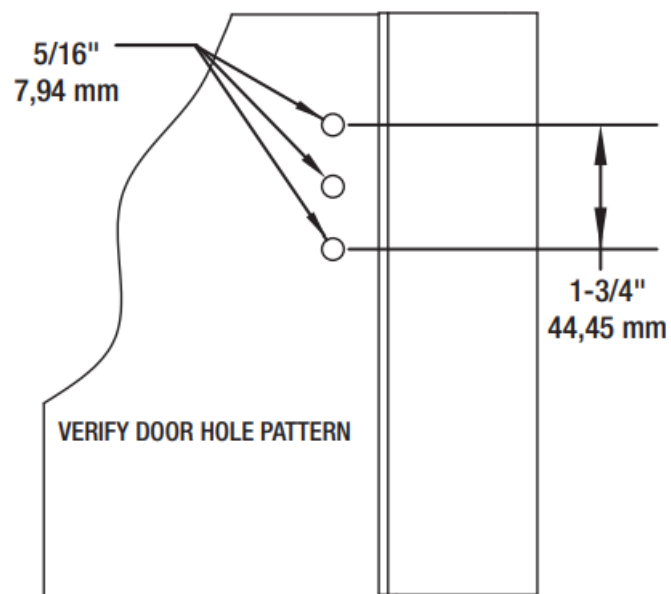
PHILLIPS SCREWDRIVER



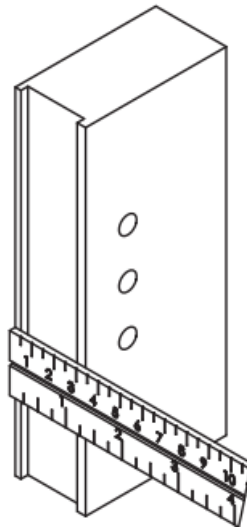
PLIERS - QTY 2
2 PINCES

EXISTING MOUNTING HOLES IN DOOR

Note: If hole pattern does not match see “New Installation” instruction Step 4.



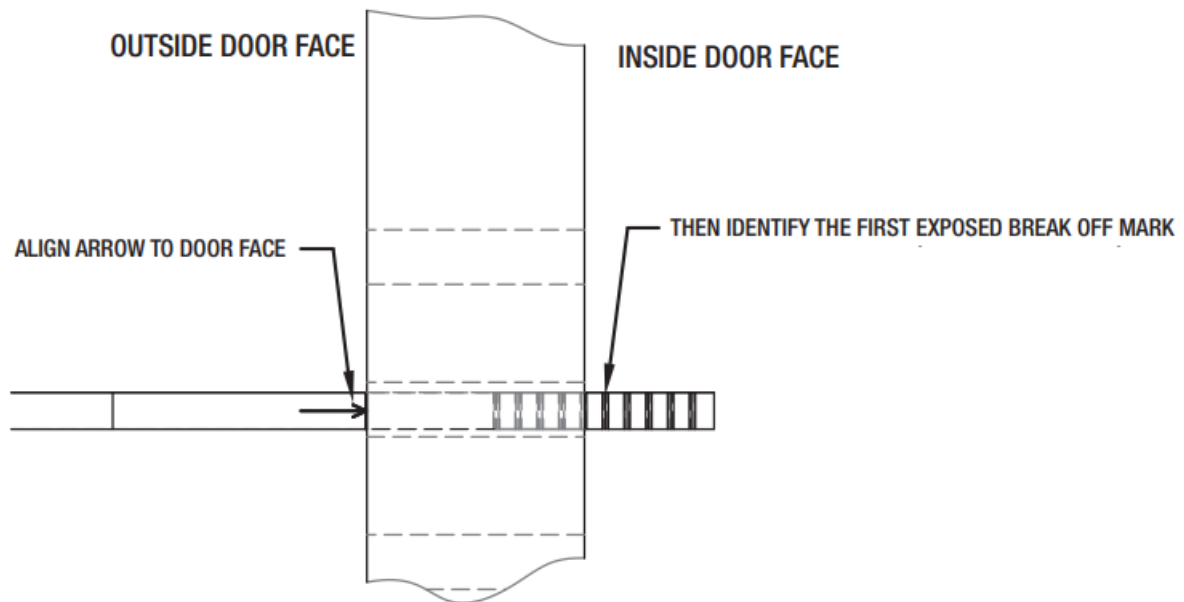
DETERMINE DOOR THICKNESS



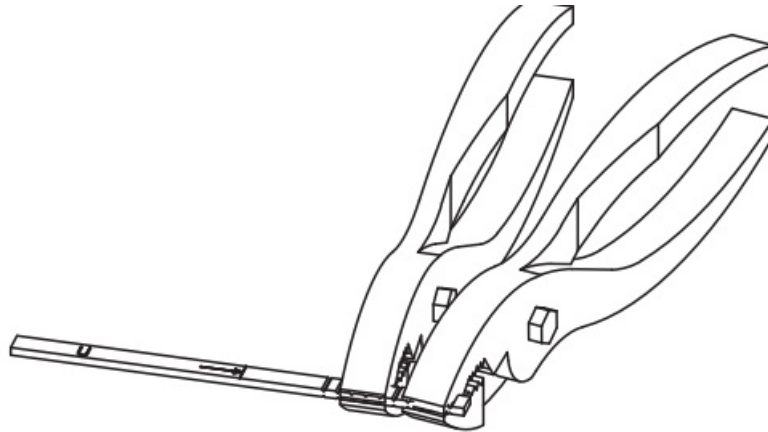
SCREW SELECTION CHART

DOOR THICKNESS							
0 (0.00)							
3/4" , 7/8" 19,1 mm , 22,3 mm 19,1 mm , 22,3 mm							
1" , 1-1/8" 25,4 mm , 28,6 mm 25,4 mm , 28,6 mm							
1-1/4" , 1-3/8" 31,8 mm , 35 mm 31,8 mm , 35 mm							
1-1/2" , 1-5/8" 38,1 mm , 41,3 mm 38,1 mm , 41,3 mm							
1-3/4" , 1-7/8" 44,45 mm , 47,7 mm 44,45 mm , 47,7 mm							
2" 50,8 mm 50,8 mm							

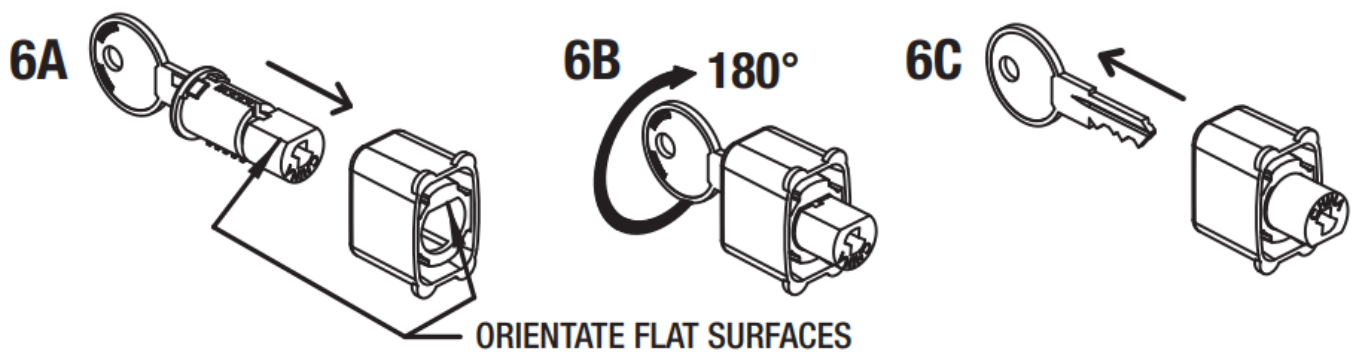
DETERMINE SPINDLE LENGTH



BREAK OFF SPINDLE AT MARK

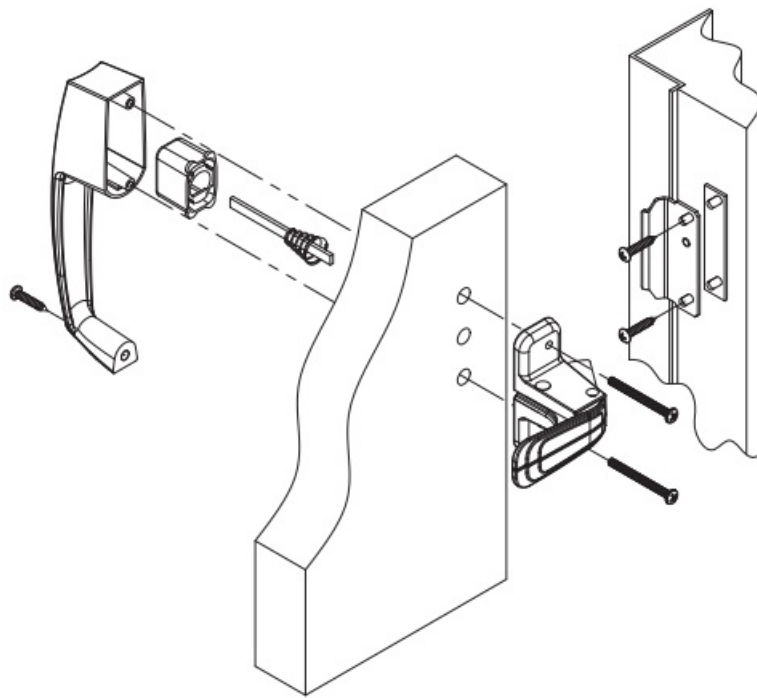


ASSEMBLE LOCK BUTTON (FOR KEYED VERSIONS ONLY)

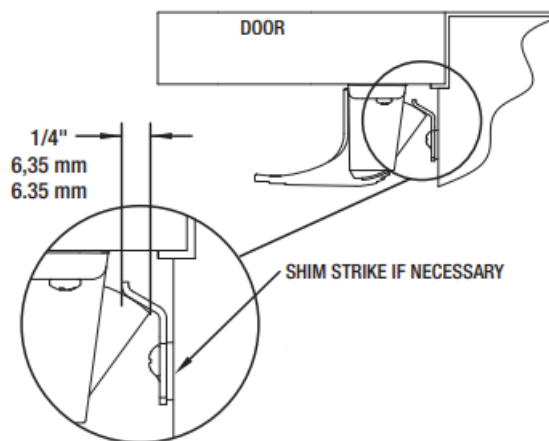


ASSEMBLE DOOR LATCH

NOTE: The handle styles illustrated may vary by model.



VERIFY STRIKE



- 50 Icon, Foothill Ranch, CA 92610-3000
- email: info@hamptonproducts.com
- www.hamptonproducts.com
- 1-800-562-5625 ©2022 Hampton
- Products International Corp. 95012000_REVC 08/22



- **FULL ONE YEAR WARRANTY** – For warranty details or to make a warranty claim for repair or replacement, please visit www.hampton.care or contact Hampton Care at 1-800-562-5625. Return of defective product and receipt may be required for warranty claims.

Documents / Resources



[WRIGHT V444-2 Push Button Handle Heavy Duty](#) [pdf] Instructions
V444-2 Push Button Handle Heavy Duty, V444-2, Push Button Handle Heavy Duty, Handle Heavy Duty, Heavy Duty, Duty

References

-  [Hampton Products | Home](#)