

BRAUN

Series 8



91818850/III-18



83XXcc
83XXs

Type 5795
Modèle 5795
Modelo 5795

www.braun.com



Braun Infolines
Lignes d'assistance Braun
Líneas de información de Braun

English	6
Français	21
Español	35

Thank you for purchasing a Braun product.
We hope you are completely satisfied with
your new Braun product.

If you have any questions, please visit
www.service.braun.com or call:

US residents 1-800-BRAUN-11

1-800-272-8611

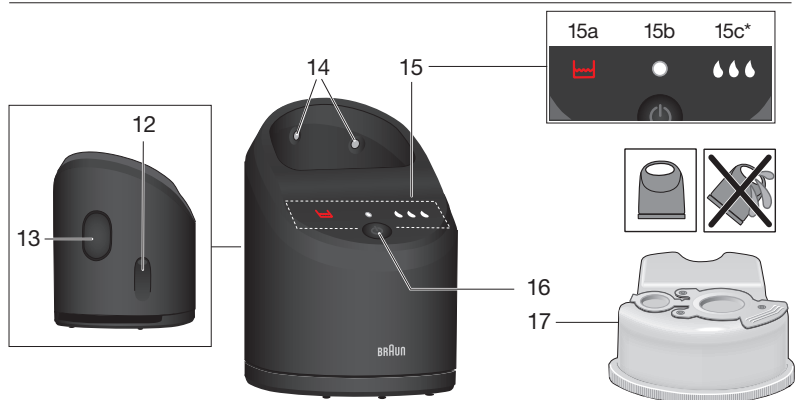
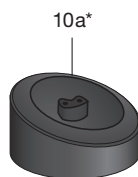
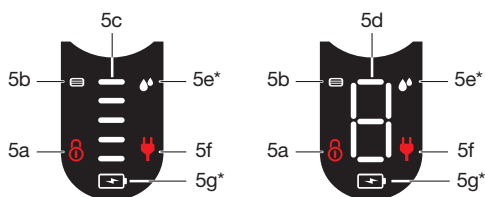
Canadian residents 1-800-387-6657

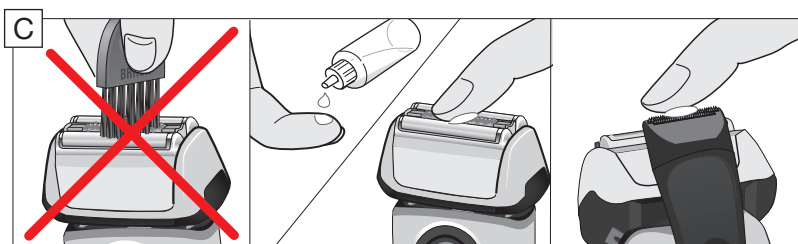
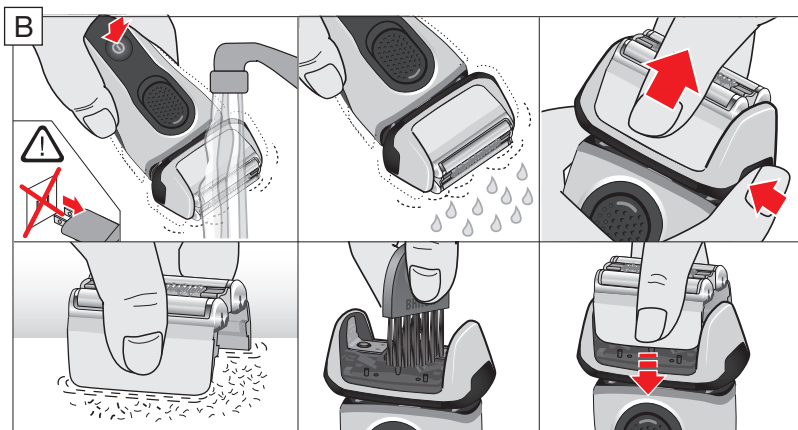
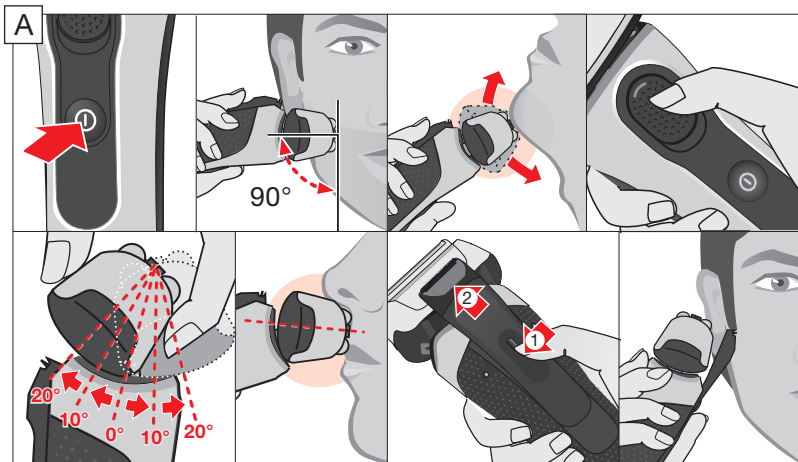
Merci d'avoir fait l'achat d'un produit Braun.
Nous espérons que vous serez entièrement
satisfait de votre nouveau produit Braun.

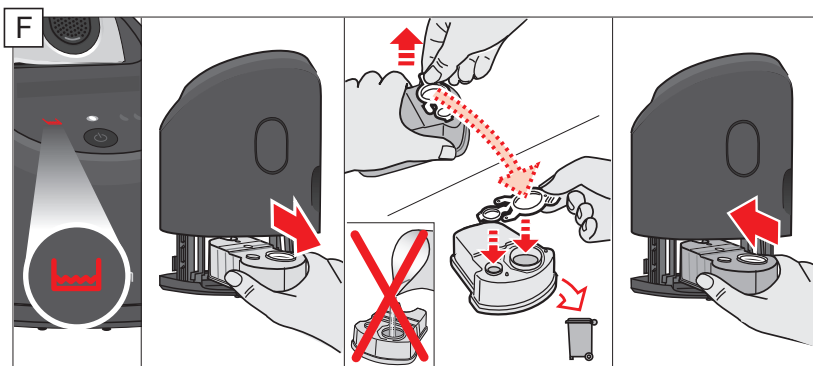
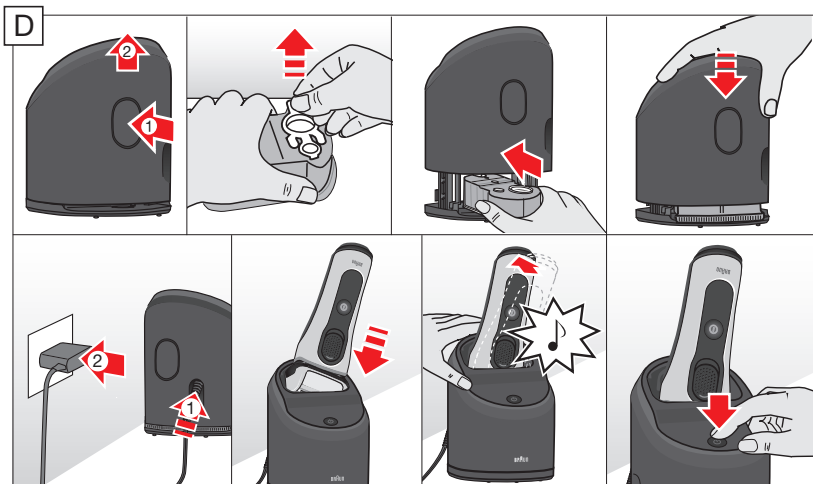
Si vous avez des questions, veuillez visiter le
www.service.braun.com ou appeler
Braun Canada : 1-800-387-6657

Gracias por haber comprado un producto Braun.
Esperamos que quede completamente
satisfecho con su nuevo producto Braun.









IMPORTANT SAFETY INSTRUCTIONS

When using an electrical appliance, basic precautions should always be followed, including the following:

Read all instructions before using this appliance.



When disconnected, the hand-held part of this shaving appliance may be used in a bath or shower. **For safety reasons, the appliance can only be operated cordless.**


DANGER

To reduce the risk of electric shock:

1. The charger unit is not for immersion in water or for use in shower.
2. Do not reach for a charger that has fallen into water. Unplug immediately.
3. Do not place, store or charge the appliance where it can fall or be pulled into a tub or sink. Do not place in or drop into water or other liquid.
4. Except when charging, always unplug this appliance from the electrical outlet immediately after using.
5. This appliance is provided with a special cord set with integrated Safety Extra Low Voltage power supply. Do not exchange or manipulate any part of it.
6. Do not use an extension cord with this appliance.
7. Unplug this appliance before cleaning.

WARNING

To reduce the risk of burns, fire, electric shock, or injury to persons:

1. Close supervision is necessary when this appliance is used by, on, or near children or persons with disabilities.
2. Use this appliance only for its intended use as described in this manual. Do not use attachments not recommended by the manufacturer.
3. Never operate this appliance if it has a damaged cord or plug, if it is not working properly, if it has been dropped or damaged, or if the power supply has been dropped into water. Return the appliance to a service center for examination and repair.
4. Keep the cord away from heated surfaces.
5. Never drop or insert any object into any opening of the appliance.
6. Do not use outdoors or operate where aerosol (spray) products are being used or where oxygen is being administered.
7. Do not use this appliance with a damaged or broken foil, as serious skin injuries may occur.
8. Always attach plug to appliance first, then to outlet. To disconnect, turn all controls off, then remove plug from outlet.
9. When plugging to an electrical outlet outside North America, use a plug adapter to match the outlet's pin configuration.
10. **Caution:** The battery used in this device may present a fire or chemical burn hazard if mistreated. Do not disassemble, heat above 100 °C (212 °F), or incinerate.
11. To recharge the battery, only use the detachable power supply provided with this appliance. If the appliance is marked -C 492-XXXX, only use Braun power supplies coded 492-XXXX.

SAVE THESE INSTRUCTIONS

Our products are designed to meet the highest standards of quality, functionality and design. Thank you for your trust in Braun's quality, and we hope you enjoy your new Braun shaver.

Important

Do not open the appliance! Only at the end of the product's useful life, disassemble the rechargeable battery for disposal reasons as shown in the battery removal section.

This product is for household use only.

Shaver

- 1 Foil & Cutter cassette
- 2 Cassette release button
- 3 Multi Head Lock switch
- 4 On / off button
- 5 Shaver display**
- 5a Travel lock
- 5b Replacement indicator for Foil & Cutter cassette
- 5c Status segments
- 5d Minutes left display
- 5e Cleaning indicator*
- 5f Plug reminder
- 5g Battery icon*
- 6 Precision trimmer
- 7 Shaver-to-station contacts
- 8 Release button for precision trimmer
- 9 Shaver power socket
- 10 Power supply**
- 10a Charging stand*/**
- 11 Travel case

* not with all models (see display box)

** design can differ

For electric specifications, see printing on the power supply.

Basic operating information

- A full charge takes 1 hour and provides up to 60 minutes of cordless shaving time. This may vary depending on your beard growth and ambient temperature.
- Recommended ambient temperature for charging is 41 °F to 95 °F / 5 °C to 35 °C. The battery may not charge properly or at all under extreme low or high temperatures.
- Recommended ambient temperature for shaving is 60 °F to 95 °F / 15 °C to 35 °C.
- Do not expose the shaver to temperatures higher than 122 °F / 50 °C for extended periods of time.
- When the shaver is connected to an electrical outlet, it may take some minutes until the display illuminates.

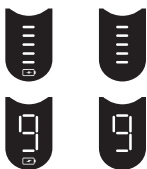
Charging

- Connect the shaver to an electrical outlet by snapping the power supply (10) into the power socket of the shaver (9) or the charging stand (10a). For cc models plug into the station power socket (see chapter «Clean & Charge Station»).
- For first-time charge, charge continuously for at least 1 hour.
- The actual charge status is shown on the display.

Display

- The display information is dependent on the model.
- Some models only show icons during charging or operation. On other models a series of icons is also shown after the shaver has been turned off.
- The table below shows the icons that can appear on the shaver display.

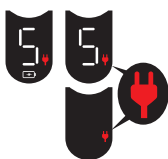
Battery status



The **battery status** is shown with segments and additionally in digits (for some models also with a battery icon).

- The status segments appear / disappear gradually with the status of the battery power.
- The digital number shows the remaining shaving time in minutes.

Plug reminder (low charge / cordless operation only)



1. Flashing: Battery is in **low charge**, i.e. 5 minutes shaving time are left.

2. Fast flashing: This appliance can only be **operated cordless**. Disconnect the shaver from the power supply before turning it on.

Travel lock



When the travel lock icon appears on the display, the shaver is locked.

Replacement indicator for Foil & Cutter cassette



The **replacement indicator** shows the usage of the Foil & Cutter cassette. The status segments disappear gradually with the numbers of shaves.

Cleaning indicator (with Clean & Charge station usage only)



The **cleaning indicator** lights up after each shave as a reminder that the shaver should be cleaned in the Clean & Charge Station.

Usage

Make sure that the shaver is disconnected from the power supply. Press the on / off button (4) to operate the shaver.

Tips for a perfect shave

1. Position the shaver at the right angle (90°) to your skin.
2. Stretch your skin slightly with your hand.
3. Shave against the direction of your beard growth.

MultiHeadLock switch (head lock)

The shaver head can be locked in five positions to shave hard-to-reach areas (e.g. under the nose).

- Slide the Multi Head Lock switch (3) down to lock the shaver head.
- Move the shaver head manually to your desired position.
- For automatic cleaning in the Clean & Charge Station the head lock needs to be released.

Precision trimmer

The trimmer can be used to trim sideburns, moustache or beard.

- Press the release button (8) and slide the trimmer (6) upwards.

Travel lock

The shaver can be locked to avoid unintended starting of the motor (e.g. for storing in a suitcase).

- Press the on / off button (4) for 3 seconds to lock / unlock the shaver. This is confirmed by a beep sound and the lock icon appearing / disappearing on the display.

Foil replacement

To maintain 100% shaving performance, replace the Foil & Cutter cassette (1), when the foil replacement indicator lights up and no status segments are visible.

- To remove the Foil & Cutter cassette press the release button (2).
- Press the on / off button for 8 seconds to reset the counter.
- Afterwards you need to unlock the shaver (see chapter «Travel lock»).
- On some shaver models the replacement indicator will reset automatically after 7 shaves.

Cleaning

Cleaning under running water

Especially important after foam or gel usage

- **Switch on the shaver cordless and rinse the shaver head under hot running water until all residues have been removed.** You may use liquid soap without abrasive substances. Rinse off all foam and let the shaver run for a few more seconds.
- Next, switch off the shaver, press the release button (2) to remove the Foil & Cutter cassette (1) and let it dry.
- If you regularly clean the shaver under water, apply a drop of light machine oil on top of the Foil & Cutter cassette once a week.

The shaver needs to be cleaned under running water after each foam or gel usage!

Cleaning with a brush

- Switch off the shaver. Remove the Foil & Cutter cassette (1) and tap it out on a flat surface. Using the brush, clean the inner area of the pivoting head. Do not clean the cassette with the brush as this may damage it!

Clean & Charge Station (C & C)*

The Clean & Charge Station has been developed for cleaning, charging, lubricating and storing your Braun shaver.

Important

Only use the special electric cord set supplied with the shaver as power supply.

To prevent the cleaning fluid from leaking, ensure that the Clean & Charge Station is placed on a flat surface. When a cleaning cartridge is installed, do not tip, move suddenly or transport the station in any way as cleaning fluid might spill out of the cartridge.

Do not place the station inside a mirror cabinet, nor place it on a polished or lacquered surface.

The cleaning cartridge contains a highly flammable liquid so keep it away from sources of ignition. Do not expose to direct sunlight and cigarette smoking nor store it over a radiator.

Do not refill the cartridge and use only original Braun refill cartridges.

DANGER: FLAMMABLE. CONTENTS MAY CATCH FIRE. Do not smoke. Use only in well-ventilated areas. Keep away from flames such as pilot light, and any object that sparks such as electric motor. Keep locked up. **KEEP OUT OF REACH OF CHILDREN.** **CAUTION: MAY IRRITATE EYES.** Do not get in eyes.

FIRST AID TREATMENT: Contains ethanol. If swallowed, call a Poison Control Centre or doctor immediately. Do not induce vomiting. If in eyes, rinse with water for 15 minutes.

- 12 Station power socket
- 13 Lift button for cartridge exchange
- 14 Station-to-shaver contacts
- 15 Clean & Charge Station display
- 15a Level indicator
- 15b Status light
- 15c Cleaning program indicators*
- 16 Start button
- 17 Cleaning cartridge*

* not with all models (see display box)

C & C Installation

- Remove the protection foil from the C & C display.
- Press the lift button (13) at the rear side of the C & C to lift the housing.
- Hold the cleaning cartridge (17) down on a flat, stable surface (e.g. table).
- Carefully remove the lid from the cartridge.
- Slide the cartridge from the rear side into the base of the station until it snaps in.
- Slowly close the housing by pushing it down until it locks.
- Using the power supply (10), connect the station power socket (12) to an electrical outlet.

C & C Usage

Important: The shaver needs to be dry and free from any foam, gel or soap residue!

- Insert the shaver in the C & C upside down, with the front showing and head lock (3) released.
- The contacts (7) on the back of the shaver need to align with the contacts (14) in the C & C. Push the shaver backwards in the correct position. A beep sound confirms that the shaver sits properly in the C & C.
- Only C & C with cleaning program selection: The C & C analyses the hygiene status. The status is shown by the cleaning program indicators (15c) in the C & C display (15).

Charging the shaver in the C & C

Charging will start automatically when the shaver has been inserted properly.

Cleaning the shaver in the C & C

When the cleaning indicator lights up on the shaver display, insert the shaver into the C & C, as described above.

Cleaning programs (not with all models)

- 💧 short economical cleaning
- 💧💧 normal level of cleaning
- 💧💧💧 intensive cleaning

Each cleaning program consists of several cycles, where cleaning fluid is flushed through the shaver head.

Automatic cleaning

Start the cleaning process by pressing the start button (16). If status light (15b) does not shine (C & C switches to stand-by after ca. 10 minutes), press start button twice. Otherwise, cleaning will not start.

Depending on your model and / or program selected, the cleaning time takes up to 3 minutes. During this time the status light (15b) blinks.

After cleaning and charging is completed, all indicators turn off.

Leave the shaver in the C & C for drying. It takes several hours until remaining moisture evaporates depending on the climatic conditions.

Removing the shaver from the C & C

Hold the C & C with one hand and tilt the shaver slightly to the front to release it.

Cleaning cartridge / replacement

When the level indicator (15a) lights up permanently red, the remaining fluid in the cartridge is sufficient for about 3 more cycles. When the level indicator blinks red, the cartridge needs to be replaced – about every 4 weeks when used daily.

After having pressed the lift button (13) to open the housing, wait for a few seconds before removing the used cartridge to avoid any dripping. Before discarding the used cartridge, make sure to close the openings using the lid of the new cartridge, since the used cartridge will contain contaminated cleaning solution.

The cleaning cartridge can be disposed of with regular household waste.

The hygienic cleaning cartridge contains ethanol or isopropanol (specification see cartridge), which once opened will naturally evaporate slowly. Therefore, each cartridge, if not used daily, should be replaced after approximately 8 weeks. The cleaning cartridge also contains lubricants for the shaving system, which may leave residual marks on the outer foil frame and the cleaning chamber of the C & C. These marks can be removed easily by wiping gently with a damp cloth and do not impact the shaver and its performance in any way.

Accessories

Braun recommends changing your shaver's Foil & Cutter cassette every 18 months to maintain your shaver's maximum performance.

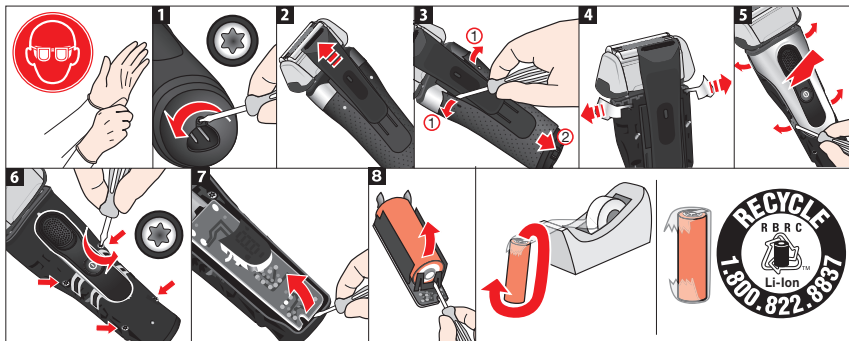
Available at your dealer or Braun Service Centres:

- Foil & Cutter cassette: 83M
- Cleaning Cartridge: CCR
- Braun Shaver cleaner spray

Battery removal

This appliance contains a rechargeable battery. Before disposing of the appliance, disassemble the housing as shown, remove the rechargeable battery and recycle or dispose of properly, according to local guidelines.

Caution: Disassembling the appliance will destroy it and invalidate the warranty.



Subject to change without notice.

Trouble-Shooting

Problem	Possible reason	Remedy
Shaver		
Shaver does not start when pressing the on / off button.	<ol style="list-style-type: none"> 1. The shaver can only be operated cordless. 2. Travel lock is activated. 	<ol style="list-style-type: none"> 1. Unplug the shaver. 2. Press the on / off button for 3 seconds to unlock the shaver.
Charging does not start when connected to power socket or put in the Clean & Charge Station.	<ol style="list-style-type: none"> 1. Sometimes charging starts delayed (e.g. after long storage). 2. Ambient temperature is out of valid range. 3. Power supply is not plugged into the shaver properly. 4. Shaver is not placed properly in the Clean & Charge Station. 	<ol style="list-style-type: none"> 1. Wait a few minutes. Charging will start automatically. 2. Recommended ambient temperature for charging is 41 °F to 95 °F / 5 °C to 35 °C. 3. Power supply needs to snap in. 4. Contacts of the shaver need to align with contacts in the Clean & Charge Station.

Shaver does not charge completely and keeps blinking.	Ambient temperature is out of valid range.	Recommended ambient temperature for charging is 41 °F to 95 °F / 5 °C to 35 °C.
Unpleasant smell from the shaver head.	<ol style="list-style-type: none"> 1. Shaver head is cleaned with water. 2. Cleaning cartridge is in use for more than 8 weeks. 	<ol style="list-style-type: none"> 1. When cleaning the shaver head with water only use hot water and from time to time some liquid soap (without abrasive substances). Remove Foil & Cutter cassette to let it dry. 2. Change cleaning cartridge at least every 8 weeks.
Battery performance dropped significantly.	<ol style="list-style-type: none"> 1. Foil and cutter are worn which requires more power for each shave. 2. Shaver head is regularly cleaned with water but not lubricated. 	<ol style="list-style-type: none"> 1. Renew Foil & Cutter cassette. 2. If the shaver is regularly cleaned with water, apply a drop of light machine oil on top of the foil once a week for lubrication.
Shaving performance dropped significantly.	<ol style="list-style-type: none"> 1. Foil and cutter are worn. 2. Shaving system is clogged. 	<ol style="list-style-type: none"> 1. Renew Foil & Cutter cassette. 2. Soak the Foil & Cutter cassette into hot water with a drop of dish liquid. Afterwards rinse it properly and tap it out. Once dry apply a drop of light machine oil on the foil.
Shaver head is damp.	<ol style="list-style-type: none"> 1. Drying time after automatic cleaning was too short. 2. Drain of the Clean & Charge station is clogged. 	<ol style="list-style-type: none"> 1. Clean directly after shaving to allow enough time for drying. 2. Clean the drain with a wooden toothpick.
Clean & Charge Station		
Cleaning does not start when pressing the start button.	<ol style="list-style-type: none"> 1. Shaver is not placed properly in the Clean & Charge Station. 2. Cleaning cartridge does not contain sufficient cleaning fluid (display blinks red). 3. Appliance is in stand-by mode. 	<ol style="list-style-type: none"> 1. Insert shaver into the Clean & Charge Station and push it to the rear side of the station (contacts of the shaver need to align with contacts in the station). 2. Insert new cleaning cartridge. Press the start button again. 3. Press the start button again.
Increased consumption of cleaning fluid.	Drain of the Clean & Charge station is clogged.	<ul style="list-style-type: none"> – Clean the drain with a wooden toothpick. – Regularly wipe the tub clean.

How to obtain service in the USA

Should your Braun product require service, please call 1-800-BRAUN 11 (272-8611) to be referred to the Authorized Braun Service Center closest to you or visit www.service.braun.com.

To obtain service:

- A. Carry the product in to the Authorized Braun Service Center of your choice or,
- B. Ship the product to the Authorized Braun Service Center of your choice. Pack the product well. Ship the product prepaid and insured (recommended). Include a copy of your proof of purchase to verify warranty coverage, if applicable.

To obtain original Braun replacement parts and accessories:

Contact a Braun Authorized Service Center.

Please call 1-800-BRAUN 11 (272-8611) to be referred to the Authorized Braun Service Center closest to you or visit www.service.braun.com.

To speak to a Braun Consumer Service Representative:

Please call 1-800-BRAUN 11 (272-8611).

How to obtain service in Canada

Should your Braun product require service, please call 1-800-387-6657 to be referred to the Authorized Braun Service Center closest to you or visit www.service.braun.com.

To obtain service:

- A. Carry the product in to the Authorized Braun Service Center of your choice or,
- B. Ship the product to the Authorized Braun Service Center of your choice. Pack the product well. Ship the product prepaid and insured (recommended). Include a copy of your proof of purchase to verify warranty coverage, if applicable.

To obtain original Braun replacement parts & accessories:

Contact a Braun Authorized Service Center.
Please call 1-800-387-6657 to be referred to the Authorized Braun Service Center closest to you or visit www.service.braun.com.

To speak to a Braun Service Representative:

Please call 1-800-387-6657.

60 day money back satisfaction guarantee for men's grooming products

Braun Shavers **Braun Beard Trimmers**

Once you have tried your new Braun shaver or beard trimmer, we are confident you will appreciate its performance. We suggest using the product regularly for 2 to 3 weeks. If you are not satisfied with the product, please call 1-800-211-6661 for instructions on how to return the product. Return the unit and all parts within 60 days of purchase. Retain original cash receipt, product and all product parts, including the box. Do not return to the retailer for guarantee fulfillment.

Please note: No refunds will be made for any product damaged by accident, neglect or unreasonable use.

Your product must be shipped in its original packaging, with your original sales slip indicating the date of purchase.

Please include the following information when you return your product:

Name

Street

City

State / Zip code

Telephone number

Please allow 6-8 weeks for handling.

FOR USA ONLY

2 year limited warranty (foil and cutter block excluded)

Braun warrants this Braun shaver (except foil and cutter block) to be free of defects in material and workmanship for a period of two years from the date of original purchase.

If the shaver exhibits such a defect, Braun will, at its option, either repair or replace it for the consumer without charge.

Please call 1-800-Braun 11 (800-272-8611) to be referred to the authorized Braun Service Center closest to you or visit www.service.braun.com.

This warranty does not cover foil and cutter cassette or damage resulting from accident, misuse, abuse, dirt, water, tampering, unreasonable use, normal wear, servicing performed or attempted by unauthorized service agencies or failure to provide reasonable and necessary maintenance, including recharging.

ALL IMPLIED WARRANTIES, INCLUDING ANY IMPLIED WARRANTY OF MERCHANTABILITY OR FITNESS FOR ANY PARTICULAR PURPOSE, ARE LIMITED IN DURATION TO 2 YEARS FROM DATE OF ORIGINAL PURCHASE. IN NO EVENT WILL BRAUN BE RESPONSIBLE FOR CONSEQUENTIAL DAMAGES RESULTING FROM THE USE OF THIS PRODUCT. Some states do not allow the exclusion or limitation of incidental or consequential damages, so the above limitation or exclusion may not apply to you.

This warranty gives you specific legal rights, and you may also have other legal rights which vary from state to state.

FOR CANADA ONLY

2 year limited warranty (foil and cutter block excluded)

In the event a Braun Shaver fails to function within 2 years from date of purchase, because of defects in material or workmanship, and the consumer returns the unit to an authorized service center, Braun Canada, will, at its option, either repair or replace the unit without additional charge to the consumer.

This guarantee does not cover any product, which has been damaged by dropping, tampering, wrong current, servicing performed or attempted by unauthorized service agencies, misuse or abuse, kinks in the shaver foil as well as the normal wear of the shearing parts.

Exclusion of Warranties: The foregoing warranty is the sole warranty offered by Braun Canada. Braun Canada hereby disclaims any implied warranty or merchantability or fitness for any particular purpose. In no event, will Braun Canada be responsible for consequential damages resulting from the use of this product.