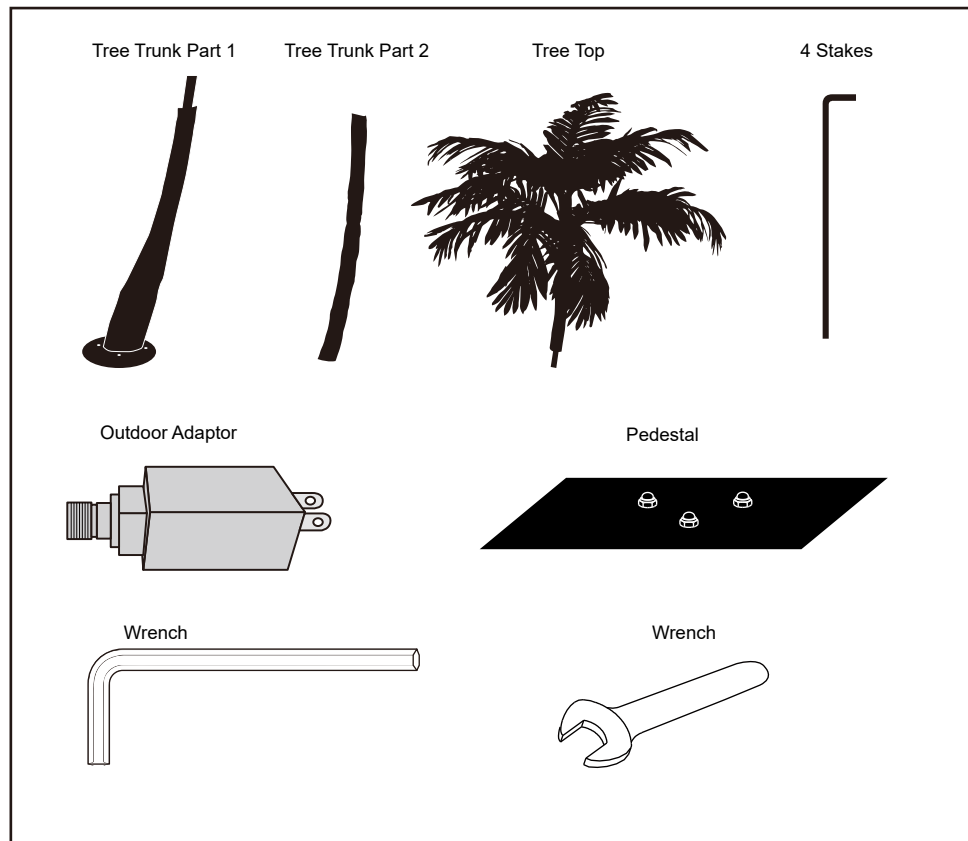


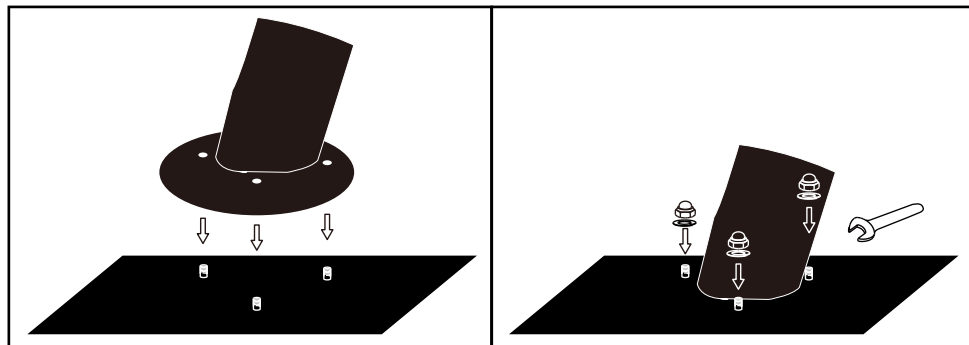
INSTRUCTION

Direction for installation:

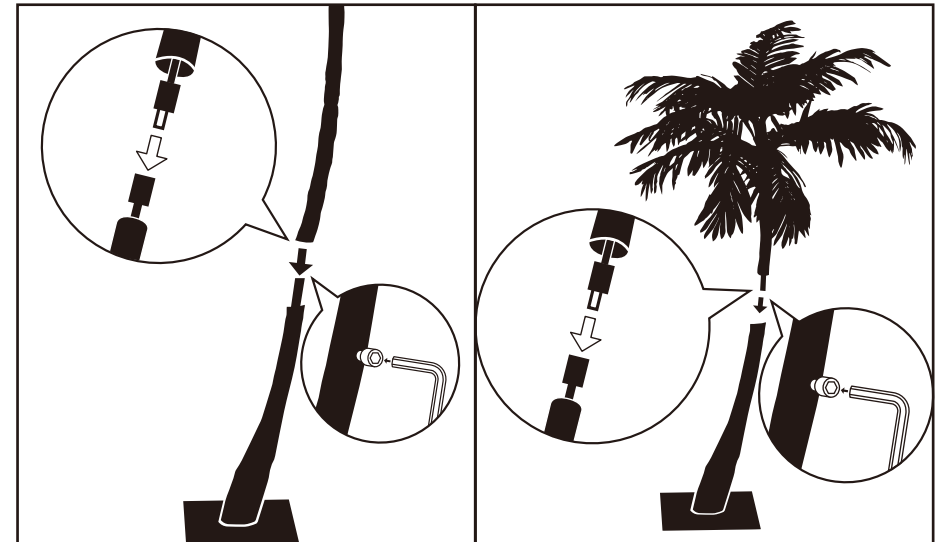
1. Carefully remove product from package;



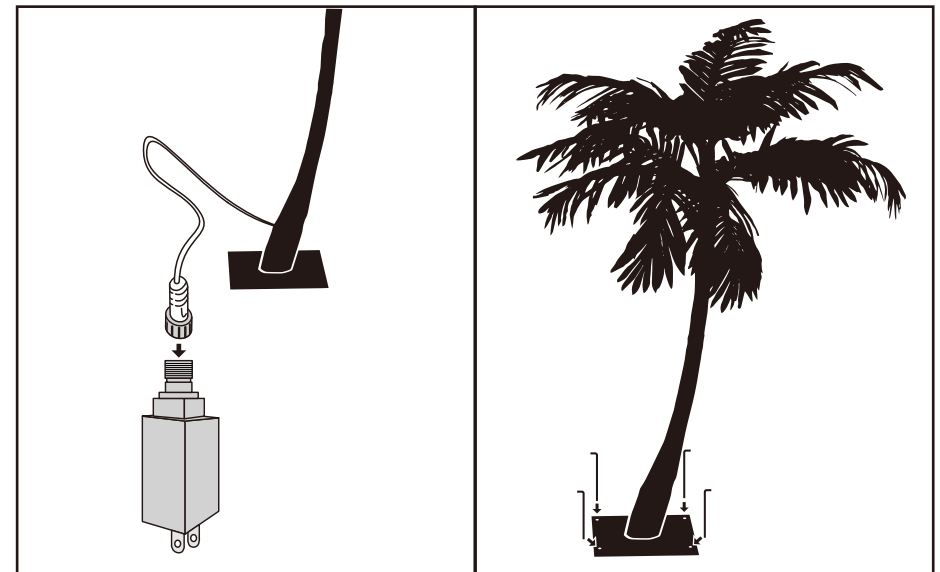
2. Adjust the trunk to fit the nuts on the base and fix it with screws by wrench included.



3. Find the wire joints inside the upper & bottom trunks. Connect up the joints, insert the upper trunk into the bottom one and fix the trunk with the screw preinstalled by Allen wrench.



4. Connect the power adapter and then plug in the outlet. Fix the base by ground stakes.



Not to forget to wrap the trunk string light around the trunk to add a warm ambience!

The tree can be shaped by bending and arranging the branches into desired position to give it a natural appearance!

- Power supply: 12V adaptor, IP44 rainproof
- Input: 120V AC 50/60Hz
- Output: 24V DC 6 W

IMPORTANT SAFETY INSTRUCTIONS

When in use outdoors, install only to a covered GFCI electrical outlet that is weather proof. Make sure the outdoor adaptor and cord are assembled correctly and secured tightly to prevent water from entering the device

1. Please read and follow all instructions and warnings both on the instructions and on the product carefully before use.
2. Retain these instructions for future reference.
3. This product is to be used only as intended its use.
4. For indoor/ outdoor use.
5. If used outdoors, connect the product to a Ground Fault Circuit Interrupting (GFCI) receptacle.
6. Do not mount or place near gas or electric heaters, fireplaces, candles or other similar sources of heat
7. Do not secure the wiring of this product with staples or nails, or place on sharp hooks, nails or in a manner that can cut or damage the wire or insulation.
8. This is an electric product and not a toy! To avoid risk of fire, burns, personal injury and electric shock it should not be played with or placed where small children can reach it.
9. Do not close doors or windows on the product or extension cords as this may damage the wire and insulation.

Troubleshooting

1. If the whole tree don't light up.

Firstly please check if the components have been connected normally. Then please check whether the adaptor works well, including the plug cord has been connected properly to the adaptor in right position of male and female connection.

2. If one or more of the branches don't light up.

Please check each bulb on the unlighted branch has been well welded by touching slightly, or bending the branch slightly, if it doesn't work please follow step 3.

3. Any problem not mentioned above or unsolved

Please contact us for assistance.

Warranty

Lightshare guarantees that this product is free of defect in material and workmanship, and provides a one-year limited hardware warranty for the product commencing from the date of purchase. Please keep your receipt for proof of purchase. This product is designed for light or decoration usage only. Using this device in any other capacity voids the warranty.

The warranty offered covers normal use. Defect or damage that result from improper operation, storage, misuse or abuse, accident or neglect, which are not the fault of Lightshare, are excluded from warranty coverage.

FAQ:

Q:How many times can each branch be bent ?

A:Please do not bend each branch more than 5 times as high-frequency bend will loose the connection between branches and also affect the appearance. If there is a loose, you are advised to bind it with an electrical tape in similar color of branches.

Q:If one of lights doesn't work, will it affect the run of the others ?

A:The others will not be affected and could work normally.

Q:Is the power supply safe for running ?

A:The voltage output of the power adapter is 12V. This product runs steadily and safely under the correct voltage.

E HOME INTERNATIONAL INC.
19295 E.Walnut Dr. N. Ste B, City of Industry , CA91748
Phone: 626- 810-8166, Fax: 626-810-8005
Customer Service Line: (888) 997-9468
www.ehomeinc.com
service@ehomeinc.com