

4. Let it charge under the sun 8 hours per day for daily use, and it will automatically turn on at dusk and off at dawn.



### NOTICE

1. Press the bottom switch and cover the solar panel completely with your hands on first use.  
Check whether the light can be turned on.
2. Charging efficiency varies in different weather and season.
3. If frequently rolled by the cars, the solar dock light might be damaged, so we suggest that do not put it in the middle of the road.
4. The packing contains small parts that could be swallowed by children, please keep the packaging material away from children or pets.
5. Any questions, please contact us freely and we will reply you within 12 hours.

**Thanks for choosing VOLISUN**

### PRODUCT HELP

- Product Technical Support;
- Product Suggestions;
- Any dissatisfied;

✉ [service@volisun.com](mailto:service@volisun.com)

Email address: [service@volisun.com](mailto:service@volisun.com) (24H Reply)

# **Volisun**

## **SOLAR DECK LIGHT**



### USER MANUAL

Email address: [service@volisun.com](mailto:service@volisun.com) (24H Reply)

## FEATURES

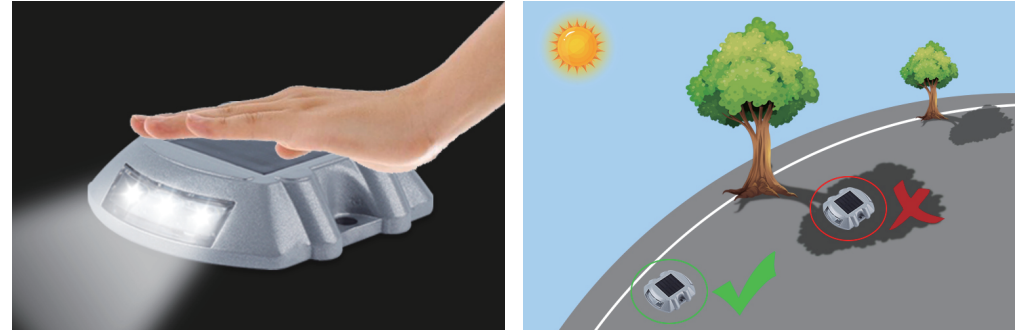
1. Solar powered and energy saving.
2. Waterproof rating IP67, hardy heat-resistant strong.
3. Automatically turns on at dusk and off at dawn.
4. Made of Monocrystalline silicon which means high charging efficiency.
5. High hardness shell which can withstand 20 tons of pressure and long lifespan.
6. Increase the switch button, make the light's storage life can reach more than 2 years.

## SPECIFICATION

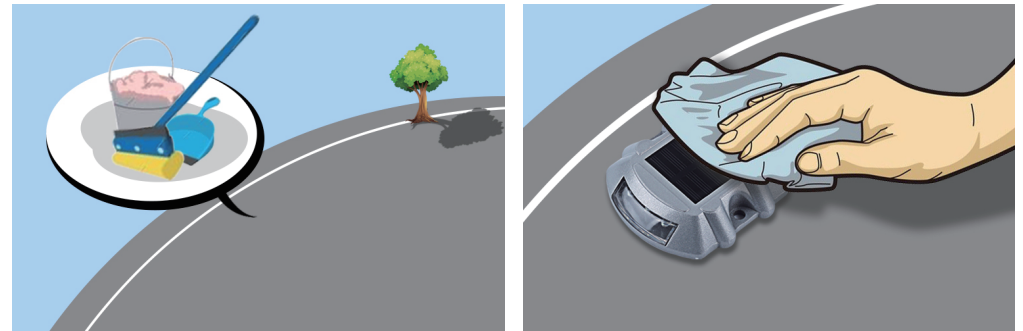
Solar panel	2V/150MA mono- -crystalline
Storage components	1.2V/600MAH high temperature NI-MH battery
Lighting time	48h after full charged
Charge time	8 hours
LED Qty	6 pcs high brightness LED
Size	110*97*24mm
Light intensity	400-500Lux
Visible distance	>500 meters
Life span	3-5 years
Working temperature	-20℃ ~+70℃
Protect level	IP67
Material	Anti-UV PC+aluminum
Weight resistance	>20 tons
Net weight per piece	0.62lb/285g

## INSTALLATION INSTRUCTIONS

1. Activate the Light (Push the bottom button, Cover the panel by hand, **light "ON"**), and Choose right place to install.



2. Clean the surface of installation area and solar dock light.



3. Use the include screws or glue to stick to fix the solar dock light to the ground.

(**TIPS:** If you want to save the product when you are not in use, Volisun recommends you to use screws installation, glue is difficult to disassemble.)

