

User Manual

Car Wireless FM Transmitter

This Bluetooth Car FM Transmitter lets you stream music and calls directly from your Bluetooth device to your car's FM stereo system. The built-in Bluetooth V5.1 provides a hands-free call function and Siri/Google Voice Assistant. Bass boost for enhanced audio performance. It also features dual charging ports (QC 3.0 & PD 20W) which will greatly save mobile charging time.

Please read the User Manual carefully before using it. Hope this device makes your driving more interesting and safer.

Package contents:

Car Wireless FM Transmitter
User Manual

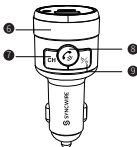
Specifications:

Model	SW-XC653
Bluetooth Version	V5.1
Bluetooth Connection Distance	10m (Max.)
Frequency Range	87.5-108.0MHz
FM Transmission Distance	Approx.3m
Input	DC12-24V 4A(Max)
USB-A Output	QC3.0(5V=3A, 9V=2A, 12V=1.5A)
Type-C Output	PD 20W (5V=3A, 9V=2.22A, 12V=1.67A)
Total Power	38W(Max)
Product Weight	Approx. 47g
Product Size	Approx. 83*36mm

Product Overview:



- ① Mic
- ② FM Channel Display
- ③ PD 20W
- ④ QC 3.0
- ⑤ Circle ring light



- ⑥ Rotatory Knob (Channel up/down, Volume up/down)
- ⑦ CH Button
- ⑧ Multi-function Button (Answer/Hang off, Play / Pause)
- ⑨ Bass Booster Button

Tips:

1. Press and hold "CH" button for 2 seconds to turn off FM/Display/Bluetooth function on the device, only keep charging. Press and hold "CH" button for 2 seconds again to turn on.
2. While Bluetooth music is playing, double press Multi-function Button and turn the knob clockwise or anticlockwise to skip the next song or go back to the previous song.

How to use:

FM Transmitter Radio

1. Tune the car radio to an unused FM frequency.



2. Plug the FM transmitter into the cigarette lighter or power port. It will be automatically powered on with the LED displaying the vehicle's battery voltage, FM frequency, then showing the word "bt".



3. Adjust this transmitter to the same frequency on the car by pressing the CH button, rotate the knob (left or right) when the LED displays FM frequency.

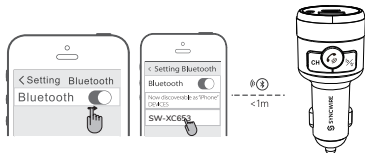


Tips for the best audio quality:

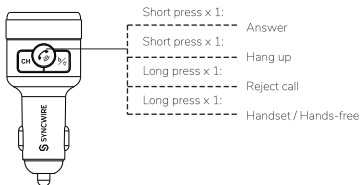
1. Find the idle frequency with minimal interference.
2. Volume control: adjust the volume of the car radio to 1/3 or 1/2, but not exceed 2/3; the phone to 2/3 or 4/5, but not to full volume.

Bluetooth Pairing:

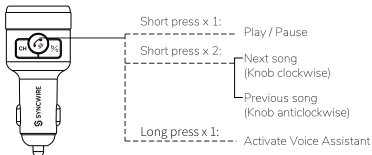
1. When the LED display shows "bt" and the device will enter into Bluetooth pairing mode.
2. Enable Bluetooth on the device you want to pair.
3. Search and select ID "SW-XC653" from the list, then connect.
4. If asked enter the pairing code '0000' or '1234'.



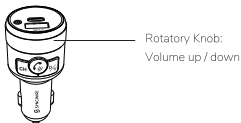
Bluetooth Calling:



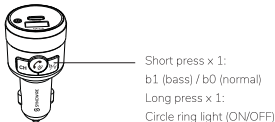
Playing and Controlling the Music:



When in Bluetooth mode press and hold the (Multi-function Button) to activate the voice assistant on your mobile phone (Siri or Google Assistant etc.)



Bass Booster Button:



Note:

In the music playing mode, when there is an incoming call, it will automatically switch to telephone mode and play the phone number in English.

If the volume was set below 22 at the last use, the next time you use the transmitter it will default to 24. If it was between 23 and 30 the last time it was used, it will be kept at the same level the next time it is turned on.

Charging Mode:

When this Bluetooth transmitter is powered by a car lighter socket, connecting the PD Type-C port / QC 3.0 USB port to your mobile phone with a required cable (not included), it will serve as a mobile phone charger.

Voltage outputs: PD 20W & QC 3.0 18W dual port fast charging.

Cautions:

1. When the car's battery voltage is less than 12V, the LED display will flash to remind you to charge the car battery.
2. The transmitter will connect to the pre-set phone automatically when turning it on. (Keep Bluetooth function activate).
3. Hang up via the phone if answering with the handset.
4. Please do not use the transmitter in severe high temperatures, humidity, dusty or corrosive environments.
5. Please remove the product from the cigarette lighter when not in use for a long time.
6. Never disassemble the product without due permission, otherwise the warranty will be invalid.

FCC Statement

Changes or modifications not expressly approved by the party responsible for compliance could void the user's authority to operate the equipment.

This device complies with part 15 of the FCC Rules. Operation is subject to the following two conditions: (1) This device may not cause harmful interference, and (2) this device must accept any interference received, including interference that may cause undesired operation.

Note: This equipment has been tested and found to comply with the limits for a Class B digital device, pursuant to Part 15 of the FCC Rules. These limits are designed to provide reasonable protection against harmful interference in a residential installation. This equipment generates, uses, and can radiate radio frequency energy, and if not installed and used in accordance with the instructions, may cause harmful interference to radio communications. However, there is no guarantee that interference will not occur in a particular installation. If this equipment does cause harmful interference to radio or television reception, which can be determined by turning the equipment off and on, the user is encouraged to try to correct the interference by one or more of the following measures:

- Reorient or relocate the receiving antenna.

- Increase the separation between the equipment and receiver.

- Connect the equipment into an outlet on a circuit different from that to which the receiver is connected.

- Consult the dealer or an experienced radio / TV technician for help.

This equipment complies with FCC radiation exposure limits set forth for an uncontrolled environment. The End user must follow the specific operating instructions for satisfying RF exposure compliance. This transmitter must not be co-located or operating in conjunction with any other antenna or transmitter.

ご注意ください:

音楽再生モードでは、着信があると自動的に電話モードに切り替わり、電話番号を英語で再生します。

前回の使用時に音量が22以下に設定されていた場合、次回の使用時には24に初期設定されます。前回の使用時に音量が23～30だった場合は、次回の電源投入時にも同じ音量が維持されます。

充電モード:

このBluetoothトランスミッターがカーライターソケットから電力を供給されている場合、PD Type-Cポート/QC 3.0 USBポートと携帯電話に必要なケーブル(付属していません)で接続すると、携帯電話の充電器として機能します。

電圧出力:PD 20W & QC 3.0 18W デュアルポート急速充電。

注意事項:

1. 車のバッテリー電圧が12V以下になると、LEDディスプレイが点滅し、車のバッテリーを充電することを促します。
2. トランスミッターの電源を入れると、あらかじめ設定した電話機に自動的に接続されます。(Bluetooth機能を有効にしておく)。
3. ハンドセットで応答する場合は、電話機を介してハングアップします。
4. 過酷な高温・多湿・塵埃・腐食性環境での使用は避けてください。
5. 長時間使用しないときは、シガーソケットから製品を取り外してください。
6. 許可なく製品を分解すると、保証が無効になります。

EC	REP
-----------	------------

Prolinx GmbH
Brehmstr.56, 40239 Duesseldorf Germany

UK	REP
-----------	------------

Syncwire UK Ltd
C/O Lai and Co.109 Portland Street, Manchester, M1 6N