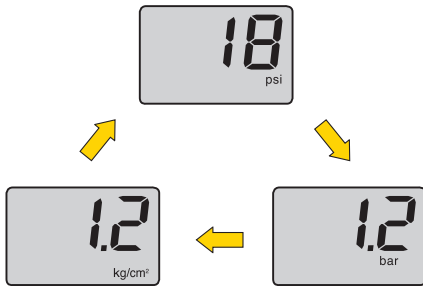
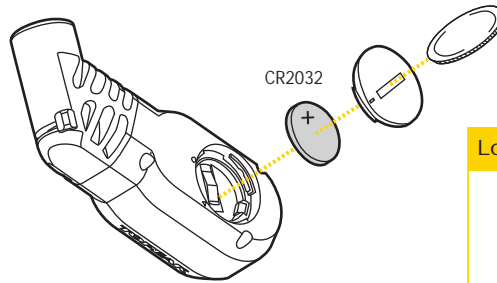


1. Air Release Button
2. Air Pressure Units Selection Button
3. Reset and on/off Button
4. Adjusting Button
5. LCD Display Screen
6. SmartHead for Presta or Schrader valve
7. Selector Button for Presta or Schrader valve
8. Battery Cover

LCD DISPLAY SCREEN



CHANGING BATTERY



Low Battery Indicator



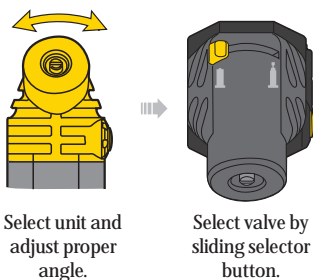
SPECIFICATIONS

- Display zone : 0~250psi, 0~17.2bar, 0~17.6kg/cm²
- Operating Temperature: 0° ~ 85°
- Battery : CR2032 x 1 pc
- Size : 10.2 x 4.5 x 3.5 cm
- Weight : 95 grams

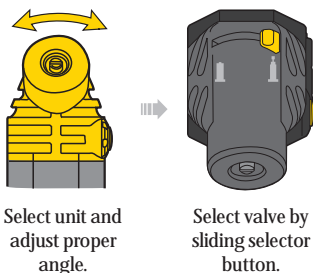
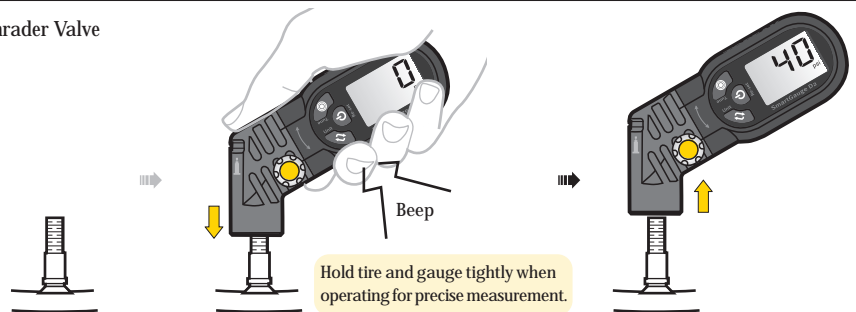
NOTES

1. Do not violently shake or drop the gauge.
2. If the gauge gets wet, wipe it with a dry towel as soon as possible.
3. Do not apply excessive force to the LCD display screen.
4. Do not use organic solvents, such as alcohol or paint thinner when cleaning the gauge.
5. Keep this gauge away from magnets.
6. Do not expose this gauge to dust or sand as this could cause damage.
7. Smart Gauge D2 is designed for use with tires, forks and shocks.

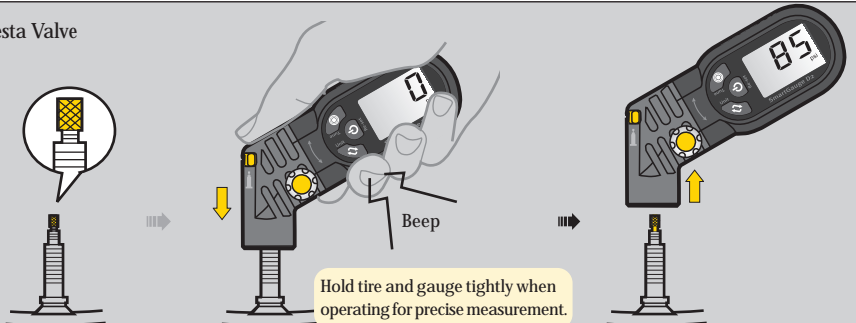
OPERATION OF SMARTGAUGE D2



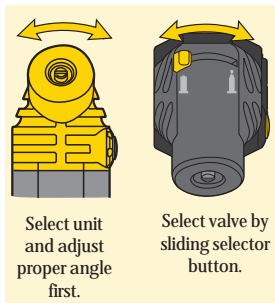
Schrader Valve



Presta Valve



HOW TO USE SMARTGAUGE D2



UNIT SELECTION



NOTE

After completing the measurement, the tire pressure units can still be changed by pressing the air pressure units selection button.

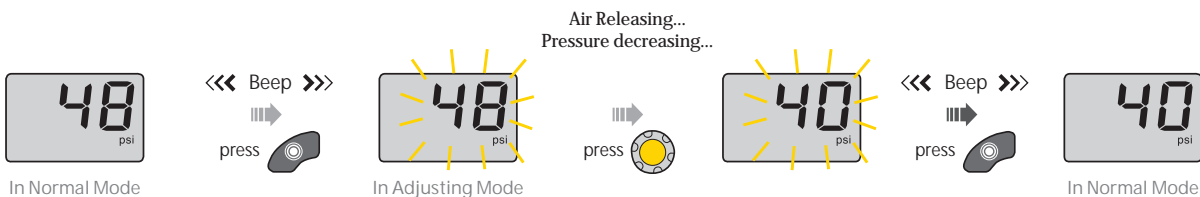
RESET SMARTGAUGE D2



NOTE

For precise measurement, reset the SmartGauge D2 until the screen displays before starting next measurement.

HOW TO USE AIR RELEASE BUTTON



IMPORTANT NOTE

1. LCD display screen will automatically turn off after 30 seconds of non-use.
2. 1 ~ 1.5psi may be lost after each pressure measurement.
3. For proper use of the Topeak SmartGauge D2, make sure the Presta/ Schrader switch button is fully selected.
4. If it's difficult to engage the tire valve, slide the Presta/ Schrader selector button back from side to side a few times to reset the function. "Re-engage" the tire valve after gauge is reset.

IMPORTANT NOTE



If "HI" appears when measuring, the gauge is over the pressure range. Press to reset the gauge.

If "HI" appears when turning on the gauge, the gauge has been damaged.

WARRANTY

1-year Warranty: All mechanical components against manufacturer defects only. Battery is not covered under any implied warranty.

Warranty Claim Requirements

To obtain warranty service, you must have your original sales receipt. Items returned without a sales receipt will assume that the warranty begins on the date of manufacture.

All warranties will be void if the SmartHead digital gauge damaged due to user crash, abuse, system alteration, modification, or used in any way not intended as described in this operating manual.

* The specifications and design are subject to change without notice.

Topeak products are available only from professional bicycle shops. Please contact your nearest Topeak authorized bicycle dealer for any questions.

For customers in the USA, call: 1-800-250-3068

Website: www.topeak.com