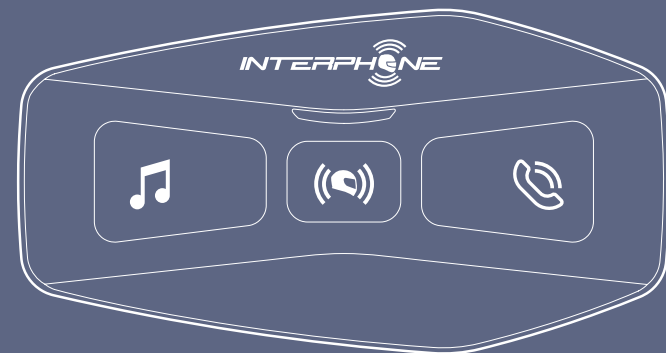
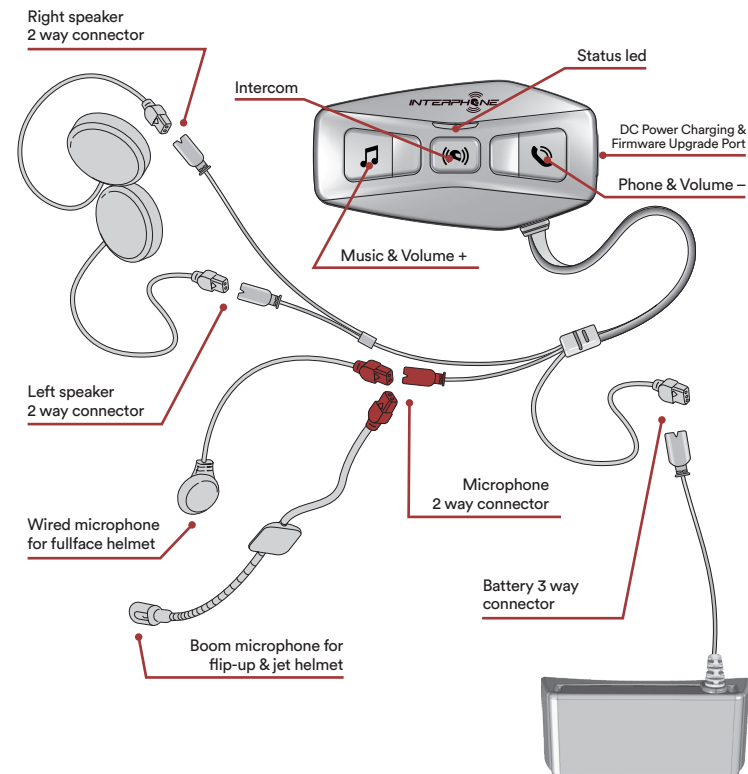


U-COM 2

Quick guide



Product details

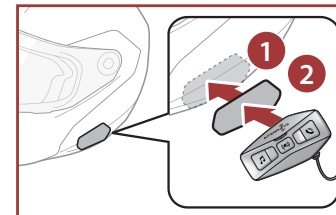


CHECK FOR SOFTWARE UPDATES
ON WEBSITE
www.interphone.com

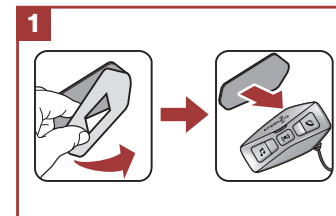
Cellularline S.p.A.
Via Lambrakis 1/A, 42122 Reggio Emilia, Italy
www.cellularline.com

Installation

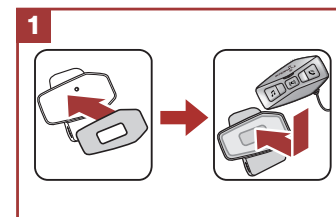
Using the hook and loop fasteners for main unit



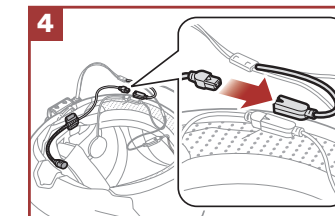
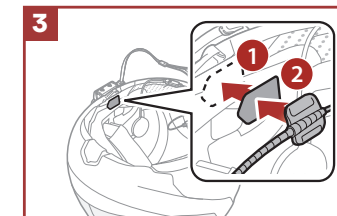
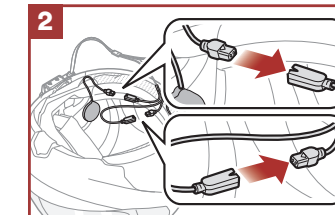
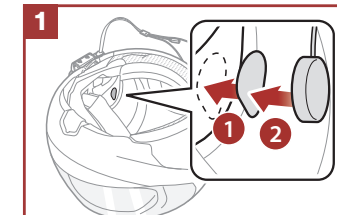
Using the double sided adhesive tapes for main unit



Using the clamp for main unit



Installing the speakers and the microphone



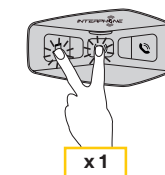
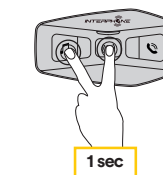
Legenda and basic functions

Press once Press twice Press three times Press and hold for 1 sec Press and hold for 5 sec Press and hold for 10 sec



Power on

Power off

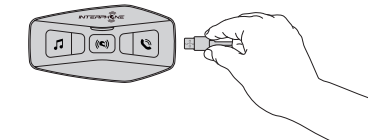


Volume increase

Volume decrease



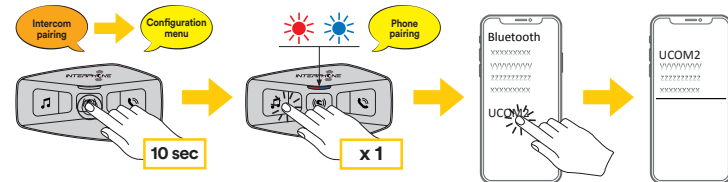
Charging



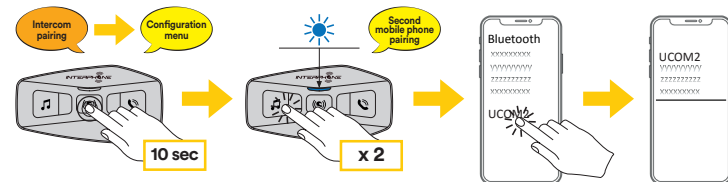


Bluetooth® devices pairing

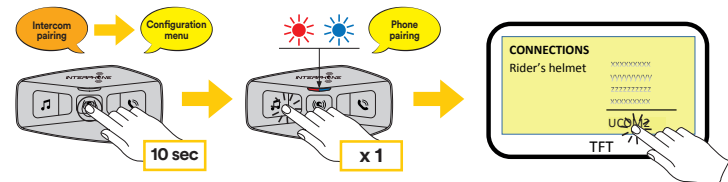
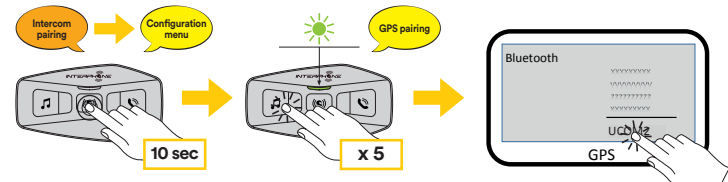
Main phone pairing (to be done with unit on)



Second phone pairing (to be done with unit on)

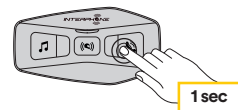


Gps SATNAV & TFT pairing (to be done with unit on)

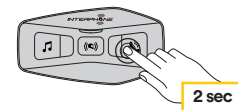


Phone

Incoming call answer



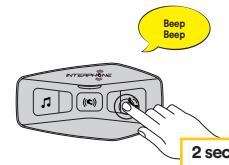
End call



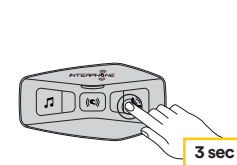
Reject incoming call



Phone assistant trigger

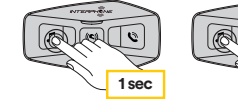


Speed dial



Music and FM radio

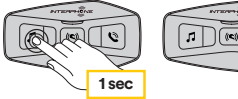
Music play



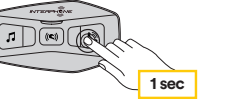
Music pause



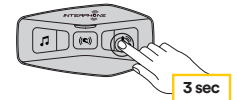
Next track



Previous track



Start/stop music sharing



Start/stop FM radio



Next station

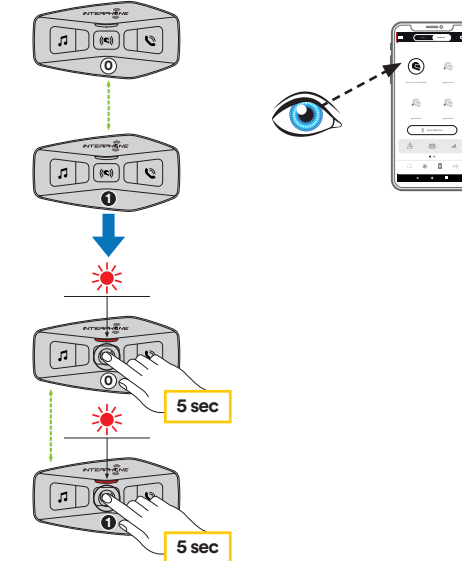


Previous station



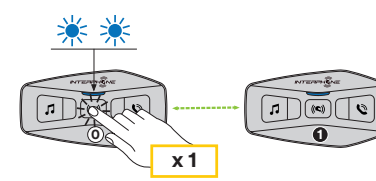
Bluetooth® Intercom - pairing

Intercom pairing 2 units



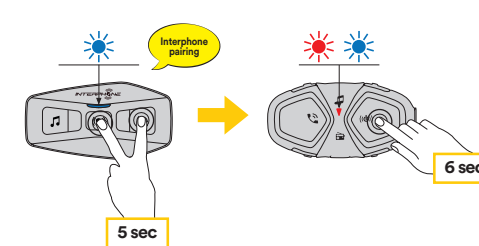
Bluetooth® Intercom - conference

Intercom conference

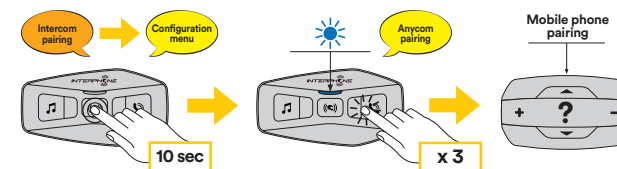


Bluetooth® Intercom - other pairings

Other Interphone series pairing (to be done with unit OFF)



Anycom pairing for other brands (except Sena)



Setup

