

Quick Guide of Using Amazon Echo To Control Smart Devices

1 .What you need to get started

Before using Echo to control your smart devices, make sure you meet the following conditions.

- Stable WiFi network which could access to Amazon server. (For mainland China users)
 - An Echo device, including Echo, Echo Tap, or Echo Dot.
 - An Amazon account. (If you don't have one, [Click here to register](#))
 - Smart Life app (or client's app) and a related account.
 - Make sure there's at least one device under your Smart Life account, and the device's name could be easily recognized by Echo (e.g., bedroom light).
-

2. Add smart devices in Smart Life app (or client's app)

You can skip this part if you've already add some devices to your Smart Life account, and in the mean time the devices' name are easily recognized.

2.1 Download Smart Life app

You can scan the QR code below to download the Smart Life app.



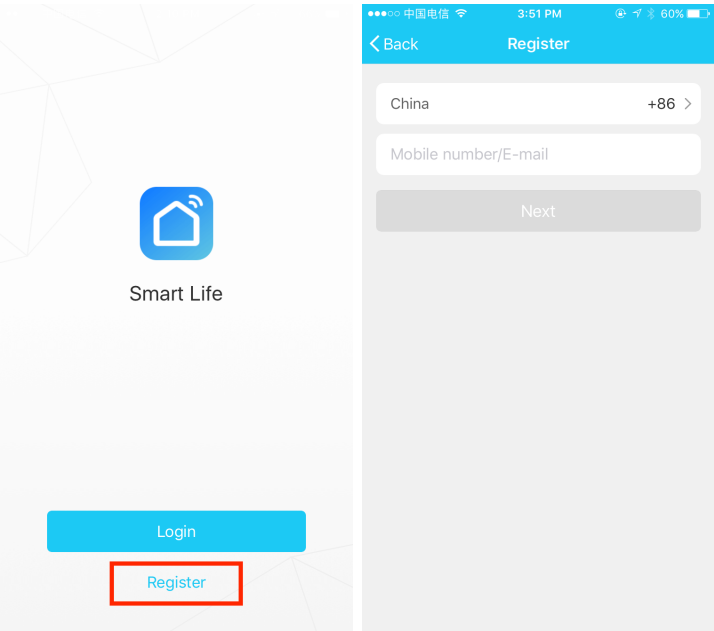
You can also search "Smart Life" in either App Store or Google Play to install the app.

iOS version download: [App Store](#)


Android version download: [Google Play](#)

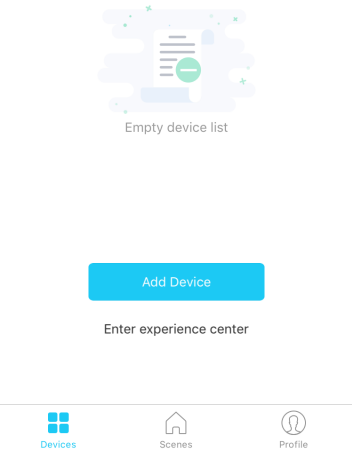
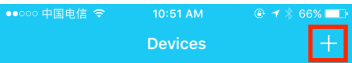
2.2 Register a Smart life account

Open the Smart Life app, tap "Register", then register a Smart Life account.




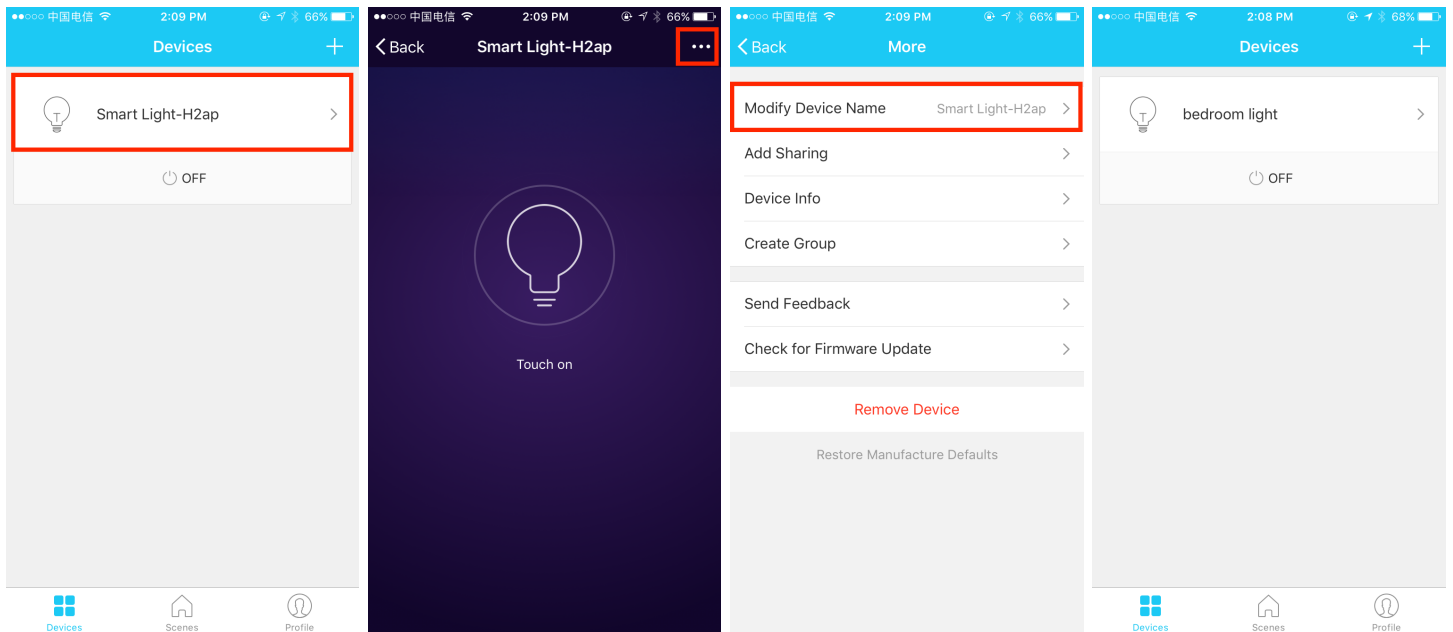
2.3 Add device

Sign in with the Smart Life account, tap  on the top right conner, then follow the instructions to add device.



2.4 Change device's name

After you managed to add the device, get into the device panel, tap  on the top right conner, then change device's name to a easily recognized word or phrase, like bedroom light.



3. Set up Amazon Echo and enable Smart Life Skill

We suggest using web for configuration in mainland China since Alexa app is not available here.

User can configure Echo through web or Alexa app.

Web configuration link: <http://alexa.amazon.com/spa/index.html>

Download Alexa app: [iOS version](#), [Android version](#)

In this manual, we take Alexa app as an example.

3.1 Set up Echo with Alexa app

You can skip this part if your Echo is already set up.

1. Make sure your Echo device is energized.
2. Make sure there's a stable WiFi network which could access to Amazon server. (For mainland China users)
3. Open the Alexa app by tapping the app icon on your mobile device.
4. Type in your Amazon account and password, then tap **Sign In**.

No SIM 5K/s 00:58

amazon alexa

Sign in with your Amazon.com account.

email address

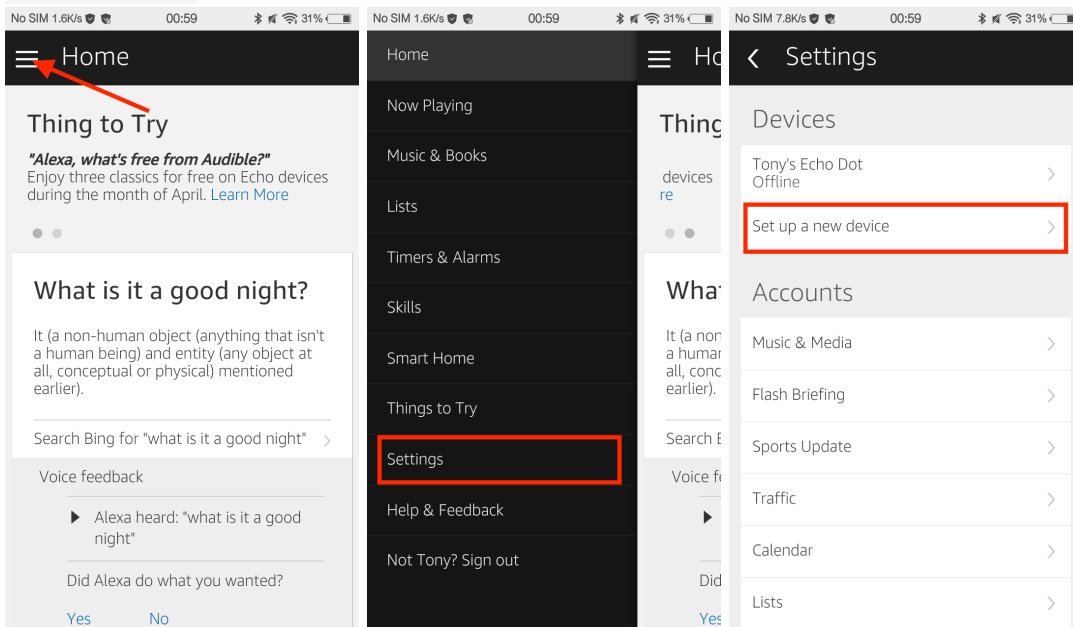
password

Sign In

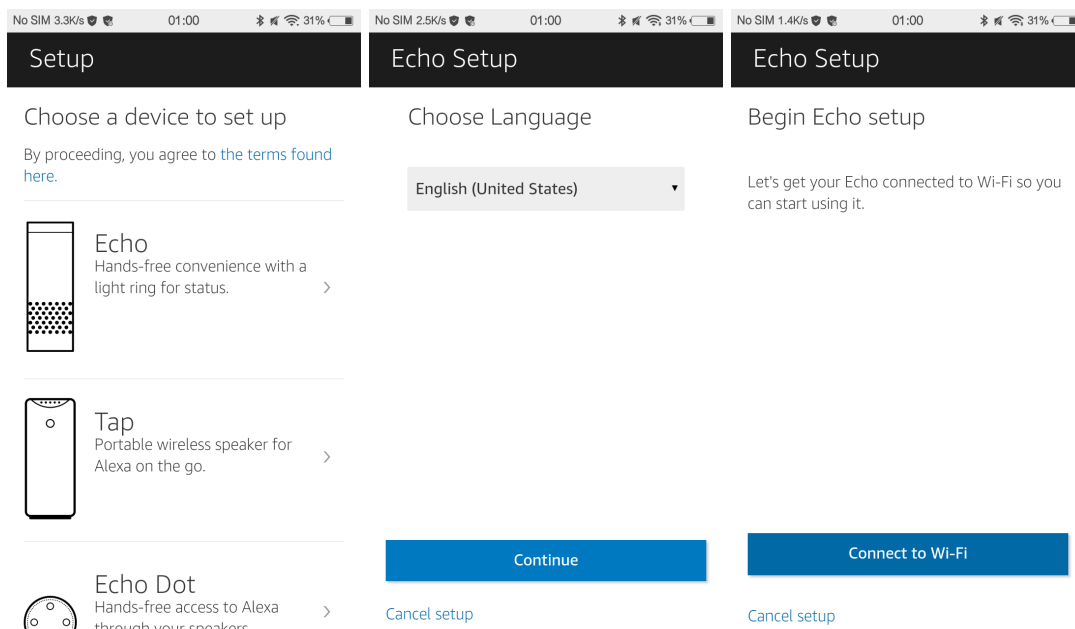
New to Amazon? [Create an account](#)

[Forgot password?](#)

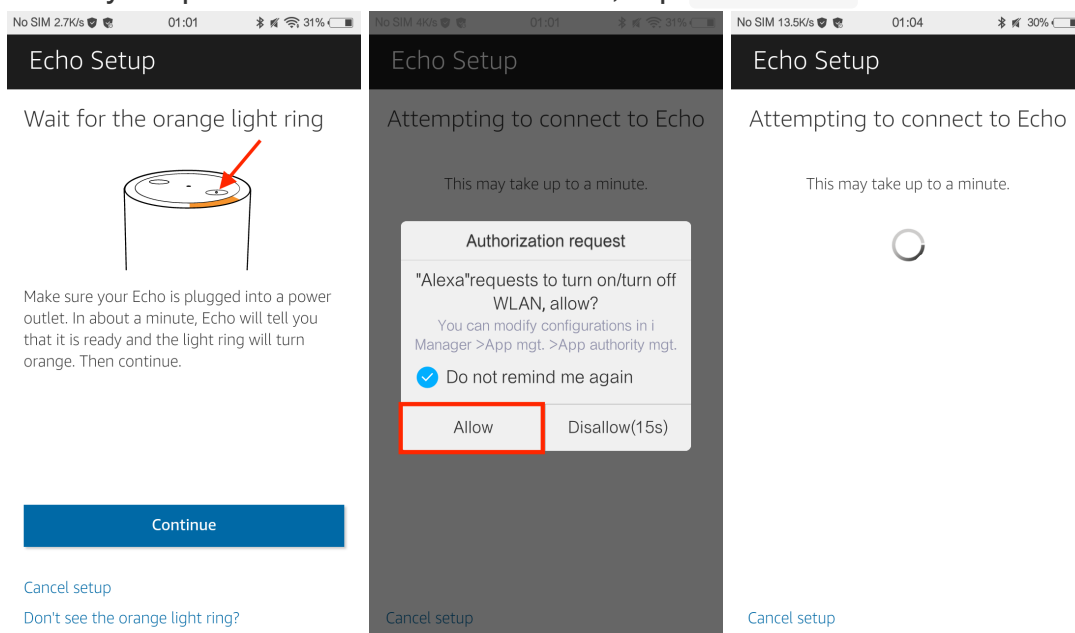
5. Tap the hamburger menu on the top left conner, select **Settings** , then tap **Set up a new device** .

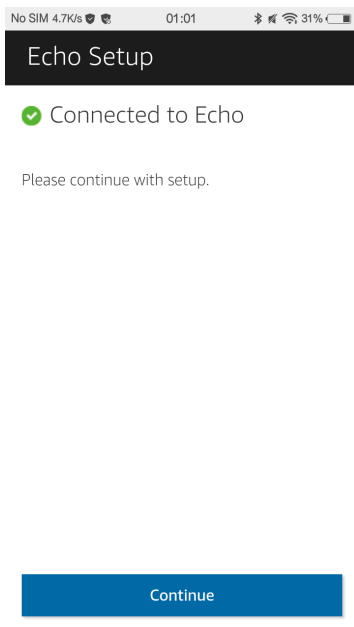


6. Select your Echo model, choose a proper language, then tap **Connect to Wi-Fi** .

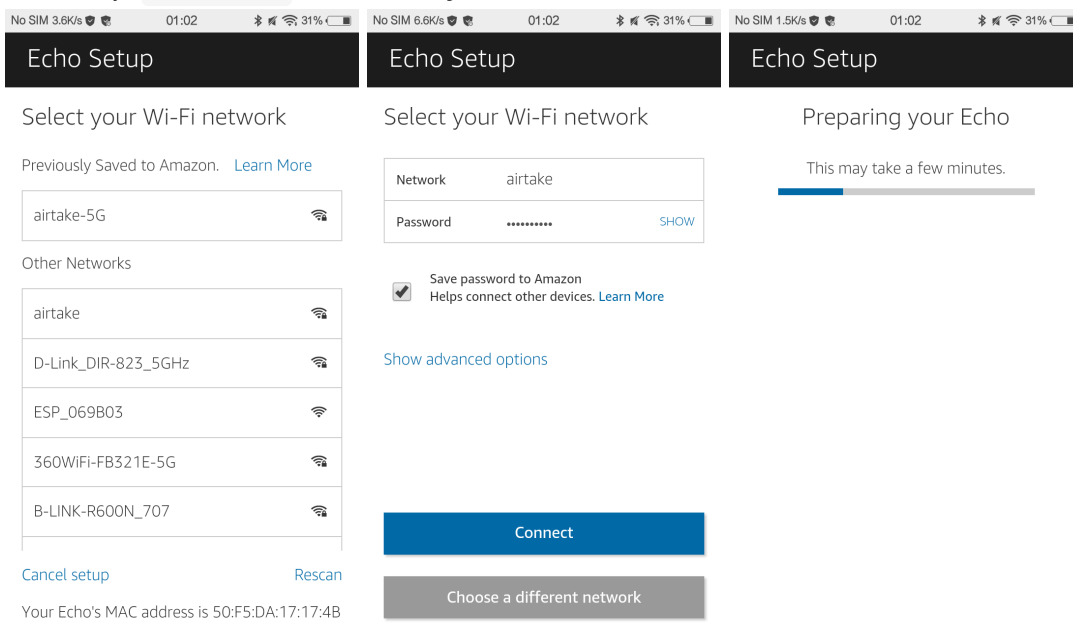


7. Long press the dot button on the top of your Echo device until the orange light shows up, then tap **Continue** . To let the phone automatically link Echo's hotspot, tap **Allow** . When your phone is connected to Echo, tap **Continue** .

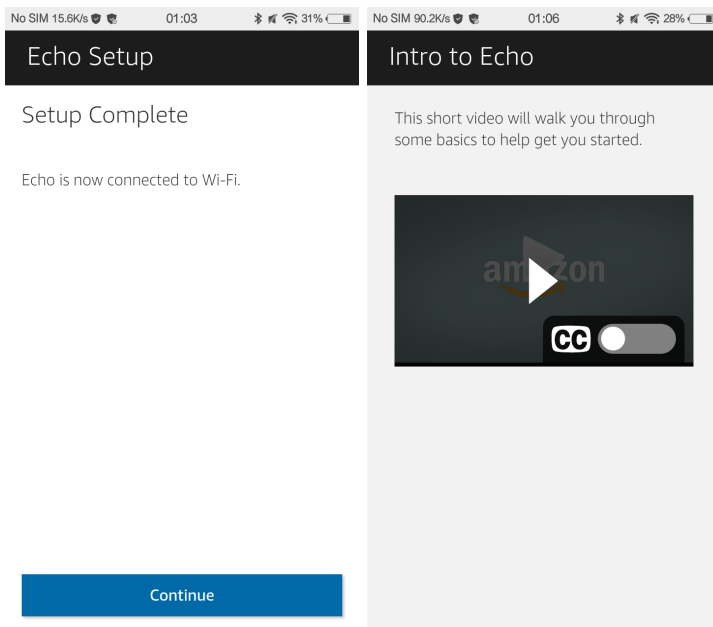




8. Select a Wi-Fi to let Echo have the access to the internet. Type in the Wi-Fi password, then tap **Connect** . Echo may take several minutes to connect the network.

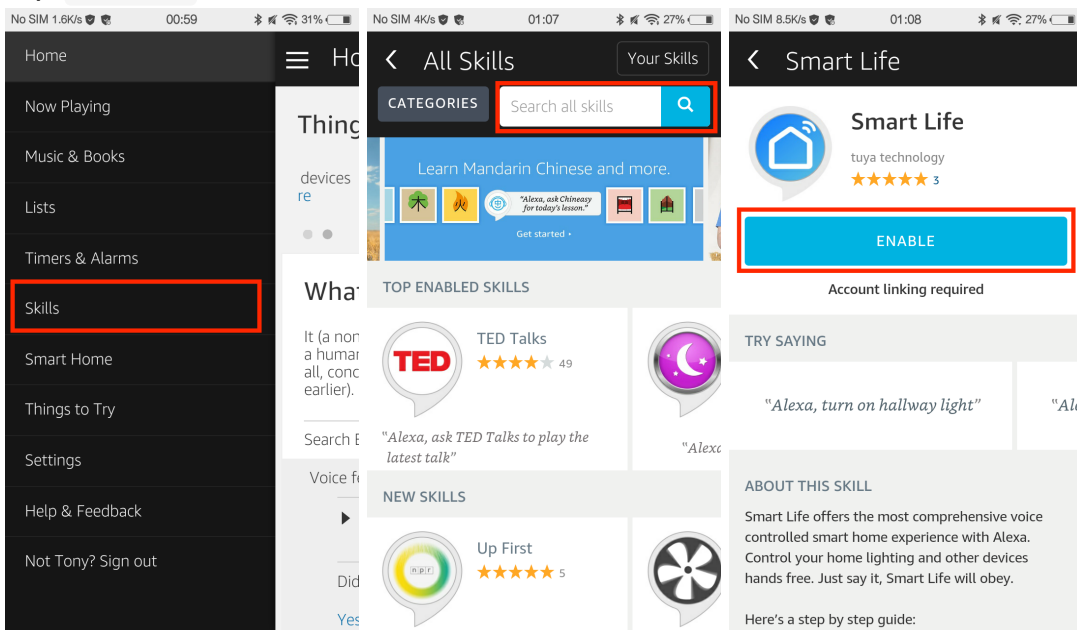


9. Tap **Continue** when Echo is connected to the network. After an introduction video, tap **Continue** to finish the setup.

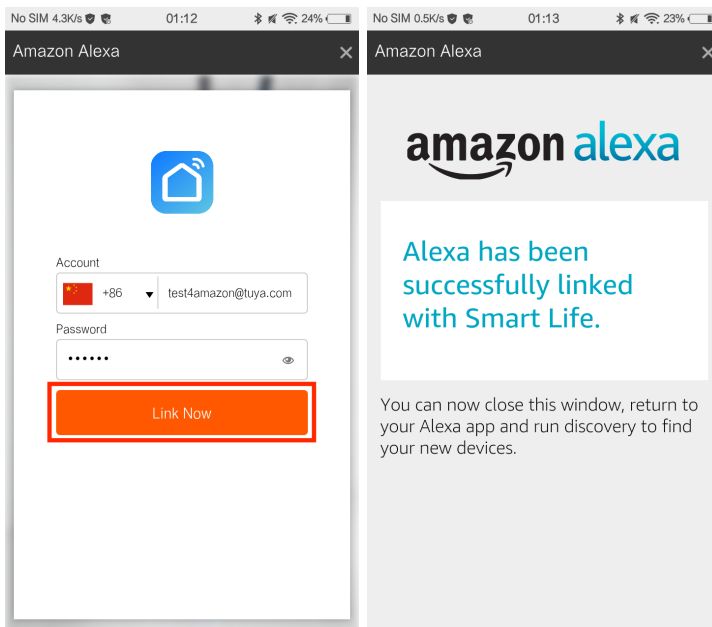


3.2 Link Smart Life account to Echo

1. Tap **Skills** in the hamburger menu, then search "Smart Life". Select "Smart Life" and tap **Enable** to enable the Smart Life Skill.



2. You will be redirected to the account link page. Type in your Smart Life account and password, don't forget to select the country/region where your account belongs to. Then tap **Link Now** to link your Smart Life account. When "Alexa has been successfully linked with Smart Life" shows up, tap **x** on the top right corner.

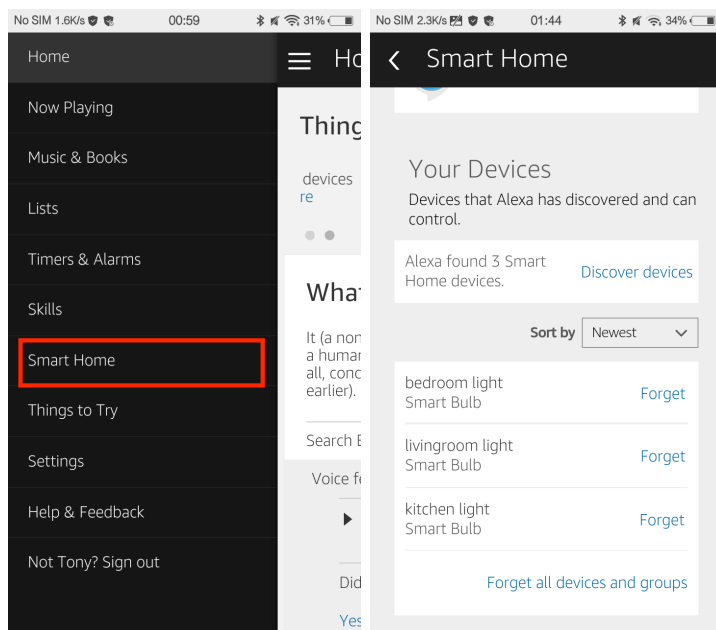


4. Control your smart devices through Echo

4.1 Discover devices

Echo needs to discover your smart devices before it controls them. You can say "Alexa, discover devices" to Echo. Echo will discover devices which have already been added in the Smart Life app.

You can also tap **Discover devices** to discover the smart devices. Discovered devices will be shown in the list.



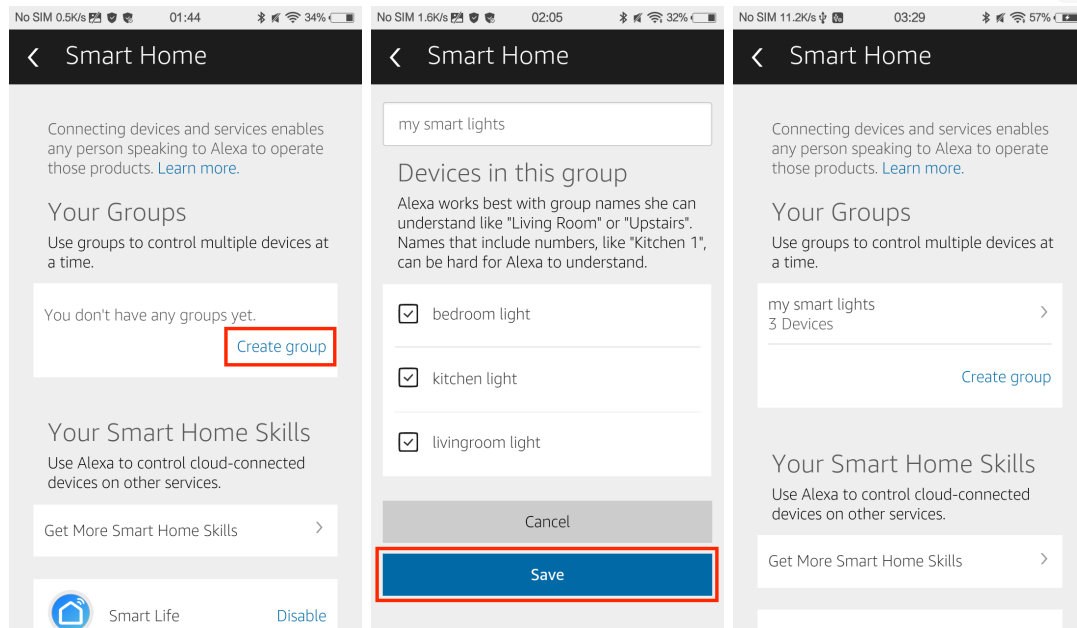
Note: every time you change the device's name on Smart Life app, Echo must re-discover before you control them.

4.2 Control devices by voice commands

Now you can control your smart devices through Echo. You can use the following commands to control your devices(e.g., bedroom light):

- Alexa, turn on/off bedroom light.
- Alexa, set bedroom light to 50 percent.
- Alexa, brighten/increase bedroom light.
- Alexa, dim/decrease bedroom light.

You can also set up groups in Alexa app. Tap **Create group** , give your group a name like "my smart lights", select devices to add them in this group, then tap **Save** .



Now you can control your devices by group. Try saying "Alexa, turn on my smart lights", all the lights are turned on!

We also support light strips, smart plugs, smart switches, heaters, e.t.c.