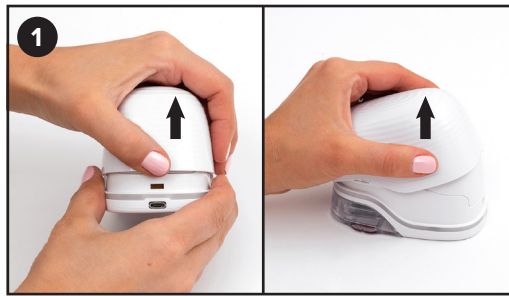




QUICK SET UP GUIDE

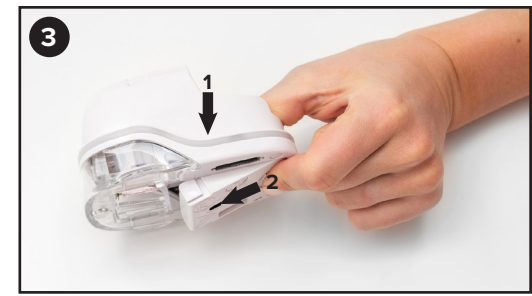
For complete instructions visit:
emarkcreate.colop.com/support



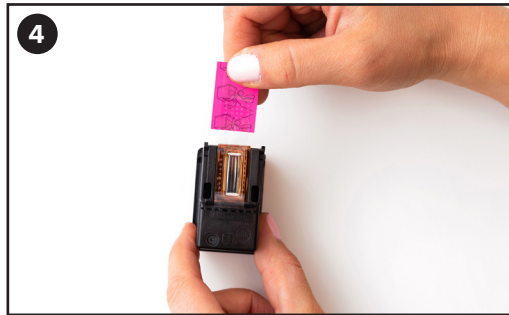
Remove top cover.



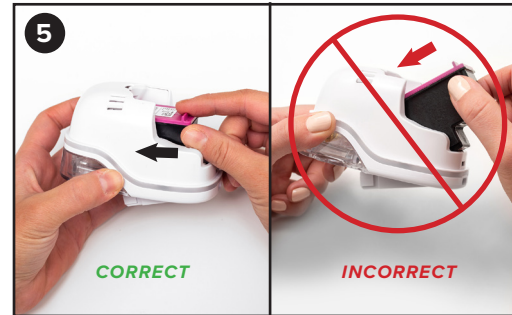
Remove battery & pull out tab (first use only).



Open bottom latch by pinching
& sliding forwards & downwards.



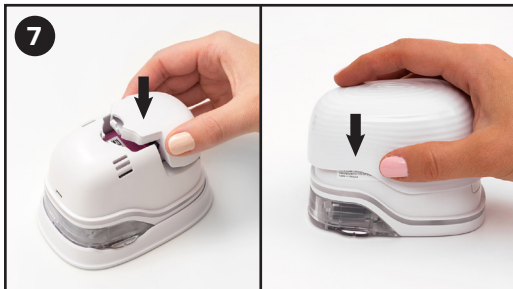
Remove protective film from printhead.



Insert ink cartridge.



Close bottom latch.



Re-insert battery and close top cover.



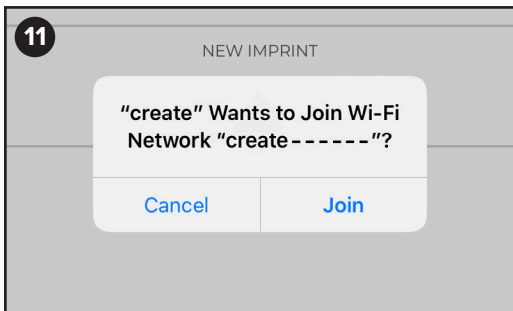
Turn on device and print test image.



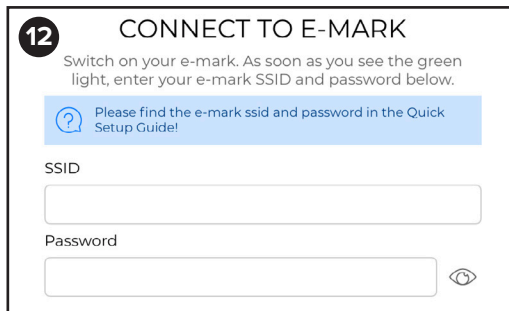
Place on docking station & plug in to charge.



Install App: getemarkcreateapp.colop.com



Connect via WIFI. Optional for iOS Devices.



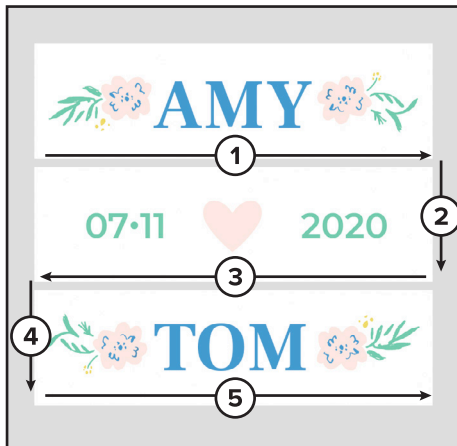
Enter SSID & password, found here →

COLOP e-mark® create



TIPS & TRICKS

MULTI-LINE PRINTING



1. Choose either two or three line printing option.
2. Once your design is ready to go select the e-mark® create icon in the top right corner.
3. The e-mark® create will beep & the app will indicate when your print has been received.
4. Follow the chart above to print each line. The e-mark® create will beep to indicate when you should change direction.

PRINTING AT A GLANCE



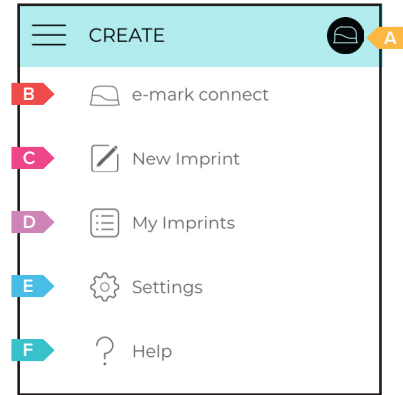
1. In the app select **New Imprint** from the drop down menu.
2. Choose **Start Without Template** or select a pre-made template from your preferred category.
3. Arrange or edit your artwork on the canvas.
4. Once your design is ready to go select the e-mark® create icon in the top right corner.
5. The e-mark® create will beep & the app will indicate when your print has been received.
6. Simply swipe e-mark® create to print your design.

CONTINUAL PRINTING



1. Make sure continual marking is turned on in imprint settings.
2. Once your design is ready to go select the e-mark® create icon in the top right corner.
3. The e-mark® create will beep & the app will indicate when your print has been received.
4. Swipe e-mark® create to print your design. The e-mark® create will continue to print as long as it is in motion.

MENU GUIDE



- A** Print your design
- B** Connect your e-mark® create check battery & ink levels
- C** Choose a customizable template or design your own.
- D** View, edit or print a previous design.
- E** Updated preferences, clean print head, & more.
- F** Web instructions, order ink cartridges, & more

AUTOMATIC CLEANING CYCLE

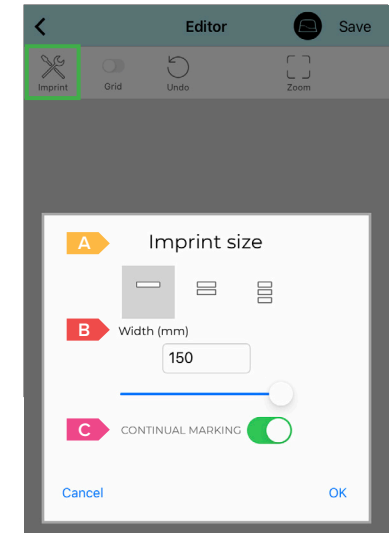


The e-mark® create cleans its print head automatically whenever it is taken from the docking station. The intensity of cleaning increases the longer the e-mark® create is not used.

1. Take e-mark® create from docking station.
2. Hold briefly in the air (wait for ink to disperse).
3. Put on Paper & print.

Do not point towards the eyes, face, or skin. Do not point towards docking station or towards the print surface during the cleaning cycle.

IMPRINT SETTINGS



- A** Choose between single line or multi-line canvas.
- B** Adjust the width of your canvas.
- C** Turn continual printing on or off.

LIGHT GUIDE



Continuous Green Light
On, not connected via WIFI.



Continuous Green & Blue Lights
On & connected to WIFI



Flashing Yellow Light
Charging, battery is charged between 0-49%.



Flashing Green Light
Charging, battery is charged above 49%.



Continuous Green Lights
Plugged in and fully charged.



Flashing Red Lights
Return e-mark create® to the docking station.