

PAX ERA QUICK START GUIDE

STEP 1

Insert Era compatible pod (purchased separately) into the Era device. The indicator light will pulse white, meaning the device is ready for use.

STEP 2

Draw from the mouthpiece to initiate your session.

STEP 3

Remove pod when it is finished. The indicator light will pulse blue, meaning the device is disconnected.



READY



DISCONNECTED

*PAX Era may need to be charged upon unboxing.

BATTERY LEVEL

To check battery level, gently shake device. White LED light petals will light up to indicate how much battery is remaining.



0-25%



25-50%



50-75%



75-100%

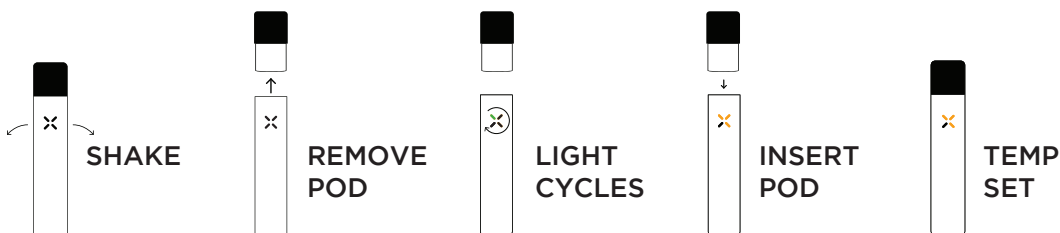
CHARGING

Charge Era by connecting it to the USB cable provided. While Era is charging, the LED light will indicate battery level.

TEMPERATURE CONTROL

To enhance and adjust pod flavor profile, you can adjust your temperature setting. To enter temp set mode, make sure a pod is inserted and follow these three steps:

1. Shake the device—indicator will show current battery level.
2. Remove the pod—indicator will first show current temp setting and then cycle through all available temp settings.
3. Re-insert pod when your preferred temp setting is indicated. Indicator will pulse to confirm the change.



LOW



MEDIUM LOW



MEDIUM HIGH



HIGH

USAGE MONITORING

Your device can track the number of puffs you've taken.

1. Double-tap the device to view your usage on your indicator light.
2. Count the number of petal colors; this is the number of puffs you've taken in the session.
3. Sessions will reset 30 minutes after the last puff.
4. Tap six times to reset to zero at any time during the session.



2 PUFFS



5 PUFFS



10 PUFFS

*One "puff" is roughly a 1-2 second inhale, depending on variables like temperature and draw strength.

FOR A MORE COMPREHENSIVE MANUAL, VISIT PAX.COM

NOT FOR SALE TO MINORS

© 2016 PAX Labs, Inc. All rights reserved. PAX Labs, Inc. the PAX Labs logo, PAX and PAX logo are trademarks of PAX Labs, Inc. US and International Patents Pending.

Patent: www.pax.com/intellectual-property-list/

APP

Download the PAX Vapor app on your mobile device from the Google Play Store or Apple App Store and follow step-by-step instructions to pair your Era device with your mobile device.

PAX ERA SAFETY GUIDELINES AND LIMITED WARRANTY

IMPORTER OF RECORD

PAX Labs, Inc
660 Alabama St. Second Floor
San Francisco, CA 94110

PAX ERA QUICK START GUIDE AND WARRANTY INFORMATION

<https://www.pax.com/support>

PRODUCT LIABILITY STATEMENT

WARNINGS

- Keep your PAX and its components out of the reach of children and pets.
- Do not disassemble or tamper with your PAX. Any inappropriate, incorrect, or irresponsible use will void any warranty and can result in serious injury.
- Do not use your PAX if it appears to be damaged, broken or is operating in an unusual or erratic manner.
- Do not use your PAX if it is unusually hot to the touch.
- Do not expose your PAX to extremely high or low temperatures.
- Do not store your PAX or any of its components in or near heat sources.
- Do not use your PAX if it becomes immersed in any liquid.
- Do not place your PAX in a dishwasher, washing machine or dryer.
- Charge your PAX using a computer, powered hub or power supply that is certified by a recognized testing laboratory to avoid potential battery malfunction, explosion, or fire.
- Your PAX contains a Lithium-ion battery and should be recycled or disposed of in accordance with local requirements to avoid potential injury and/or environmental harm.

- Do not dispose of the battery or any component of your PAX in a fire as it could cause an explosion or other serious injury.

This device complies with part 15 of the FCC Rules. Operation is subject to the following two conditions: (1) This device may not cause harmful interference, and (2) this device must accept any interference received, including interference that may cause underside operation.

IMPORTANT: This equipment has been tested and found to comply with the limits for a Class B digital device, pursuant to part 15 of the FCC Rules. These limits are designed to provide reasonable protection against harmful interference in a residential installation. This equipment generates, uses and can radiate radio frequency energy and, if not installed and used in accordance with the instructions, may cause harmful interference to radio communications. However, there is no guarantee that interference will not occur in a particular installation. If this equipment does cause harmful interference to