



# WOZART WSCM01 Switch Controller Mini Installation Guide

[Home](#) » [WOZART](#) » WOZART WSCM01 Switch Controller Mini Installation Guide 

## Contents

- [1 WOZART WSCM01 Switch Controller Mini](#)
- [2 What's in the box](#)
- [3 Description](#)
- [4 Technical Specifications](#)
- [5 Setup Guide](#)
- [6 Troubleshooting](#)
- [7 Warranty and Service](#)
- [8 Documents / Resources](#)
  - [8.1 References](#)
- [9 Related Posts](#)



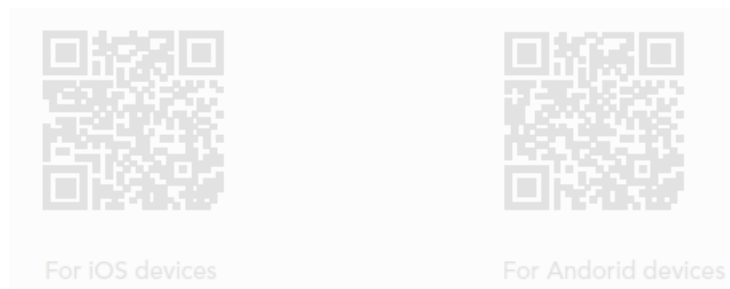
**WOZART WSCM01 Switch Controller Mini**



## Welcome

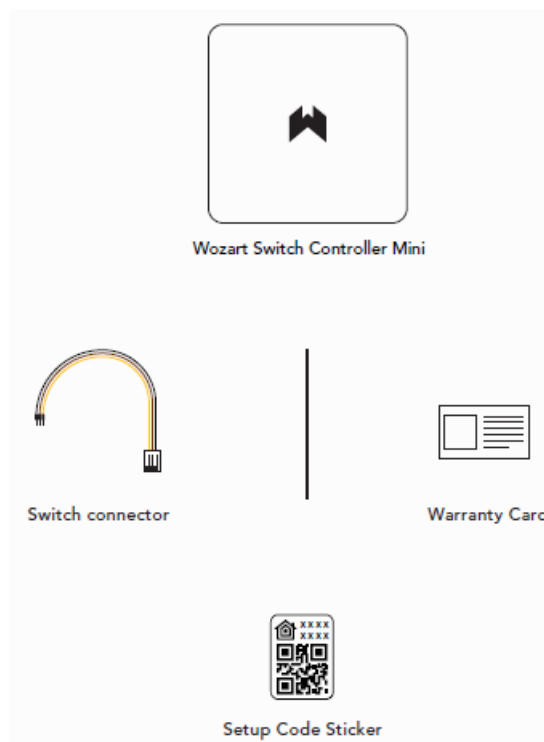
This Guide will walk you through the installation of Wozart Switch Controller Mini. We hope you enjoy your purchase. We at Wozart have carefully crafted a reliable, durable and secure Smart Home product. We promise to toil harder to build awesome devices that make life simpler and planet more livable. We hope our association continues and grows stronger with each passing day. You are awesome for supporting the change we wish to bring in the way people live.

For configuration video, scan the QR code below



As Wozart app is frequently updated, there may be changes to this manual. Please refer to [www.wozart.com/support](http://www.wozart.com/support) for the latest version of the manual. Download Wozart app from Google play store or App store.

## What's in the box

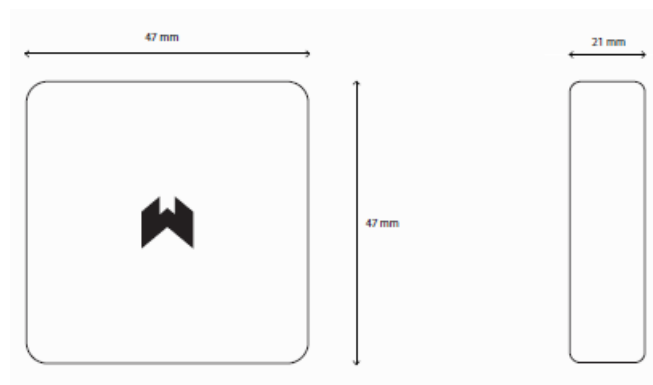


## Description

Wozart Switch Controller Mini is a smart device that turns electrical appliances or circuits on and off. The device fits behind your standard wall switchboard and can be controller either using voice commands or app interfaces on smart controller devices or through physical switches.

## Technical Specifications

Power Supply	100-240 V ~ 50/60 Hz
Number of Loads	2
Rate Load Wattage	150 W per channel
Compatible load types	Resistive and Inductive
Operating Temperature	0-40°C
Ambient Humidity	0- 95 % RH without condensation
Communication Protocol	Wi-Fi 2.4 GHz 802.11
Dimensions (Height*Width*Depth)	47 mm * 47 mm * 21 mm
Weight	60 Gms
Model	WSCM01



## Precautions

- Make sure that only switch connector wires (thin wires) coming out of WozartSwitch Controller Mini are connected to manual switches.  
No electrical wires are to be connected to physical switches
- The device is designed to control electrical devices operating on AC voltage, faulty connection or use may result in fire or electric shock.
- Do not power the device before full installation and assembling it in the switchboard.
- Do not handle the device with wet or moist hands.
- Do not modify or alter the device in any way not included in this manual.
- Do not use in damp or wet locations, near shower, swimming pool, sink, or anywhere else where water or moisture are present.
- Always use the same power source for device and loads.
- Do not connect appliances that are not to the specification mentioned in this document.
- If you do not have basic electrical wiring knowledge, please get help of an electrician or contact us.

## Setup Guide

<b>N</b>	Terminal for Neutral Wire	<b>L1</b>	Terminal for 1 <sup>st</sup> appliance
<b>P</b>	Terminal for Live Wire	<b>L2</b>	Terminal for 2 <sup>nd</sup> appliance
Switch Connector slot			

### Load connections

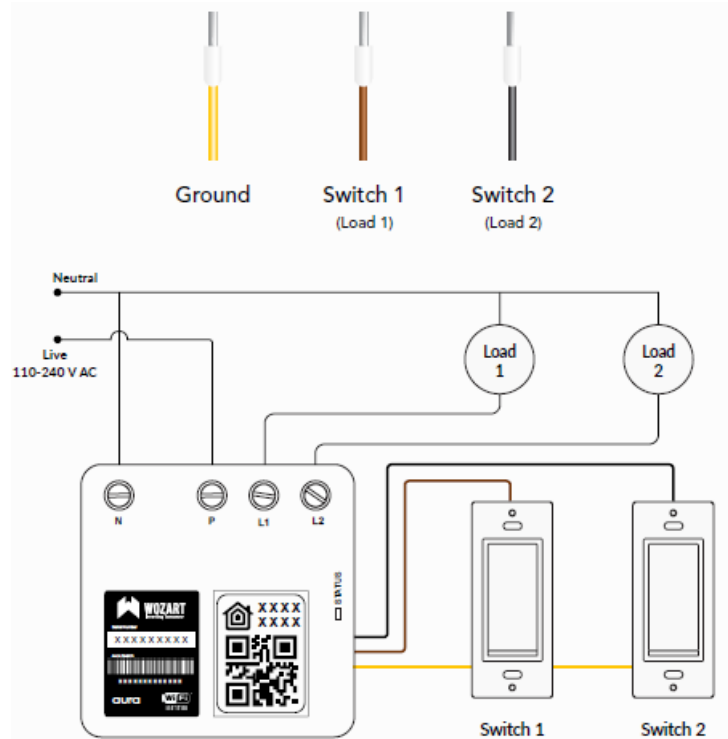
Switch off the main power supply

- Connect neutral wire behind switchboard to terminal N of Wozart Switch Controller Mini.
- Connect live wire behind switchboard to terminal P of Wozart Switch Controller Mini.
- Connect electrical appliances to terminals L1 and L2.

### Switch connections

- Plug switch connector provided in the box to the switch socket of Wozart Switch Controller Mini.
- Following are the colours of the wires that have to be connected to the physical switches and the respective

loads they control.



- Verify the connections and assemble the device inside the switchboard.
- Turn on the main power supply to the device and proceed with configuration on the app.

## Troubleshooting

The device isn't responding

- **a)** Check if the Wi-Fi router is functioning properly
- **b)** Reconnect your smart controller device eg: Phone to Wi-Fi network to which Wozart device is connected.
- **c)** Switch off the main power supply of the room that has the device for 5 seconds and then switch it back ON.
- **d)** Do factory reset as explained below and reconnect the device.

### Normal Reset

Switch off the main power supply of the room that has Wozart device to be reset or toggle switch connected to slot L1 eight times.

### Factory Reset

Toggle switch connected to slot L2 of switch connector eight times continuously then you hear a buzzing sound.

**Note:** If factory reset is done all your customization is lost. Do it only if required.  
Not able to scan the QR sticker as it is damaged.

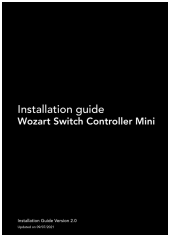
Use the Spare QR Sticker provided in the Wozart Switch Controller Mini box or enter the code manually.

## Warranty and Service

This Wozart device can be replaced in full for three years from date of purchase in case of damage or malfunction due to manufacturing defects. This Warranty does not cover cosmetic damage or damage from accident, neglect, misuse, alteration or abnormal conditions of operation or handling. Wozart Technologies or any of its licensors are not liable for any special, incidental, consequential or indirect damages or losses arising from any cause.

Resellers are not authorized to extend any other warranty on Wozart's behalf.  
Service for all Wozart products will be provided for device life time. To obtain service, contact nearest authorized reseller or Wozart Technologies Private Limited.

## Documents / Resources

	<p><a href="#">WOZART WSCM01 Switch Controller Mini</a> [pdf] Installation Guide WSCM01, Switch Controller Mini, Controller Mini, Switch Controller, Controller</p>
---	---

## References

-  [Support | Smart Home Gadgets India | Wozart Technologies](#)