

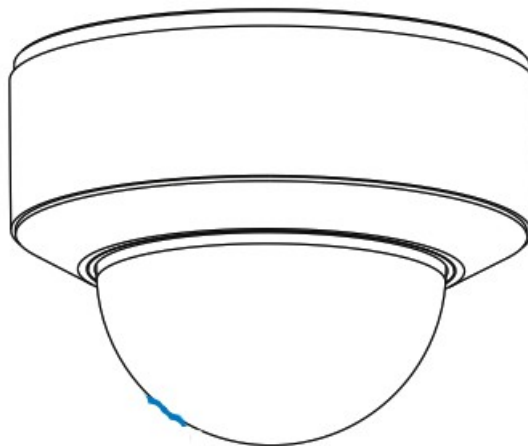


# WORLDEYECAM CLEARIP-IPC Network Camera User Guide

[Home](#) » [WORLDEYECAM](#) » [WORLDEYECAM CLEARIP-IPC Network Camera User Guide](#) 



## Network Camera Quick Start Guide



### Contents

- [1 CLEARIP-IPC Network Camera](#)
- [2 Warning and Caution](#)
- [3 Package](#)
- [4 Overview](#)
- [5 Installation](#)
- [6 Network Connection](#)
- [7 Documents / Resources](#)
- [8 Related Posts](#)

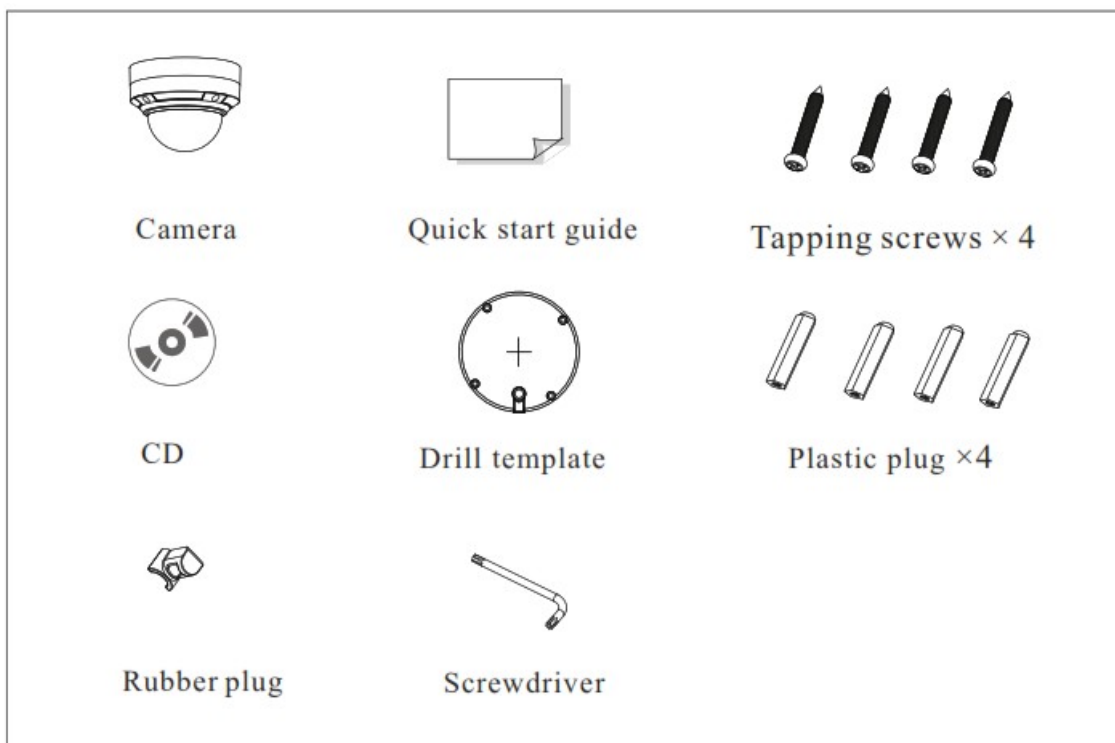
## CLEARIP-IPC Network Camera

- Please read this instruction carefully before operating the unit and keep it for further reference.
- All the examples and pictures used here are for reference only.
- The contents of this manual are subject to change without notice.

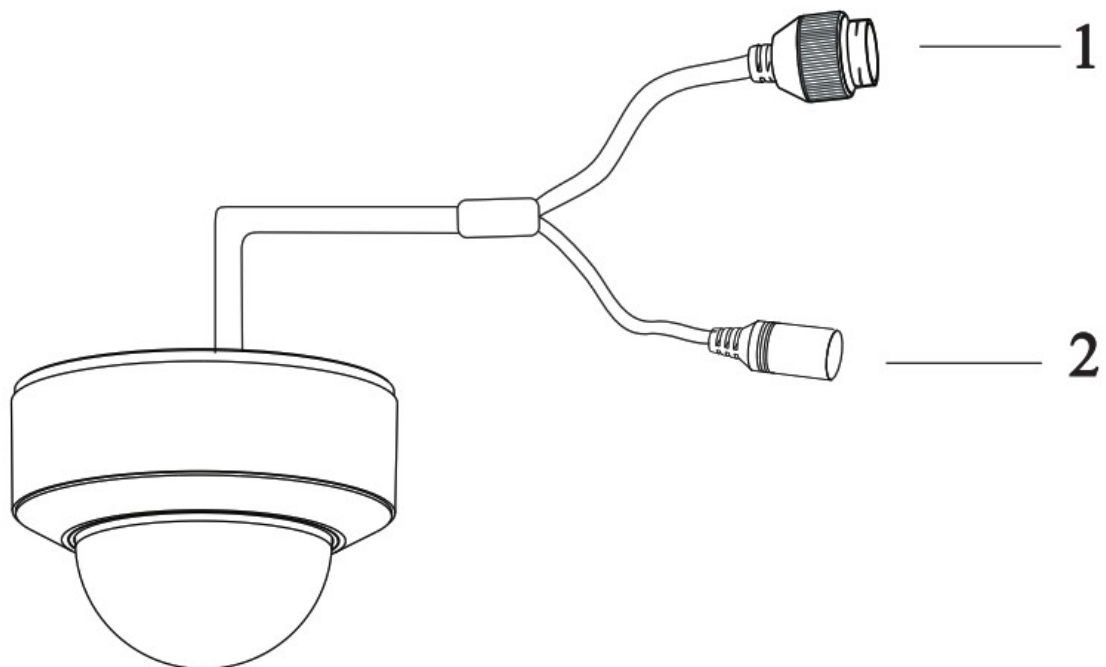
### Warning and Caution

- If the product does not work properly, please contact your dealer or the nearest service center. Never attempt to disassemble the camera yourself. (We shall not be responsible for any problems caused by unauthorized repair or maintenance.)
- Do not allow water or liquid intrusion into the camera.
- In the use of the product, you must be strict compliance with the electrical safety regulations of the nation and region. When the product is mounted on wall or ceiling, the device shall be firmly fixed.
- Do not use camera beyond specified voltage range.
- Do not drop the camera or subject it to physical shock.
- Do not directly touch the camera when installing.
- Avoid touching the camera lens.
- If cleaning is necessary, please use clean cloth to wipe it gently.
- Do not aim the camera at the sun or extra bright place.
- Do not place the camera in extremely hot, cold (the operating temperature shall be  $-30^{\circ}\text{C}\sim 60^{\circ}\text{C}$ ), dusty or damp locations, and do not expose it to high electromagnetic adiation.
- To avoid heat accumulation, good ventilation is required for operating environment.

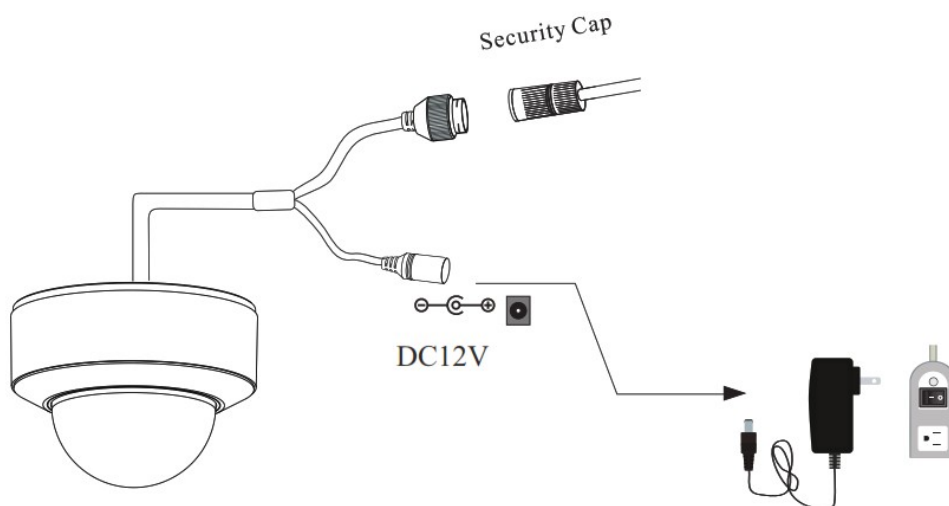
### Package



### Overview

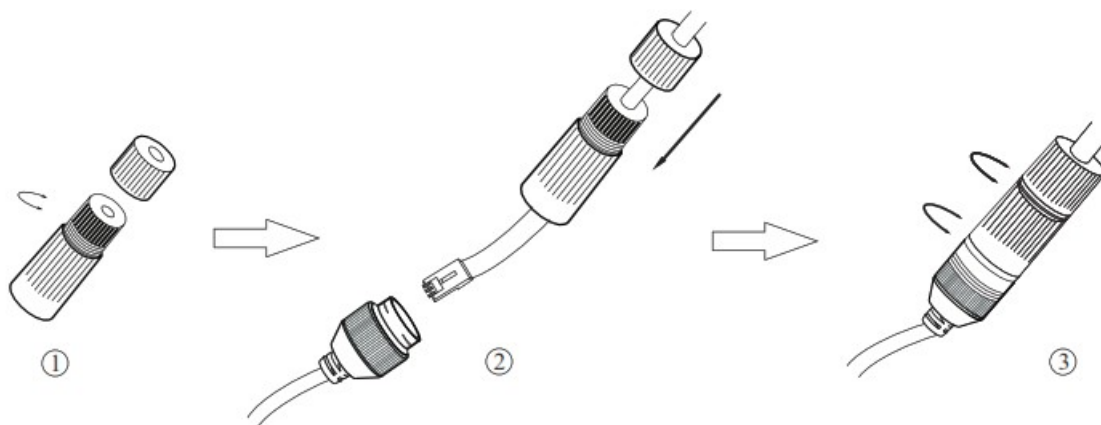


- 1. Ethernet connector
- 2. Power connector



- \* 1 It is recommended to install the security cap for outdoor installation.
- \* 2 If the PoE switch is used to power the camera, DC12V power supply is not required.

#### ► Connecting Network Cable

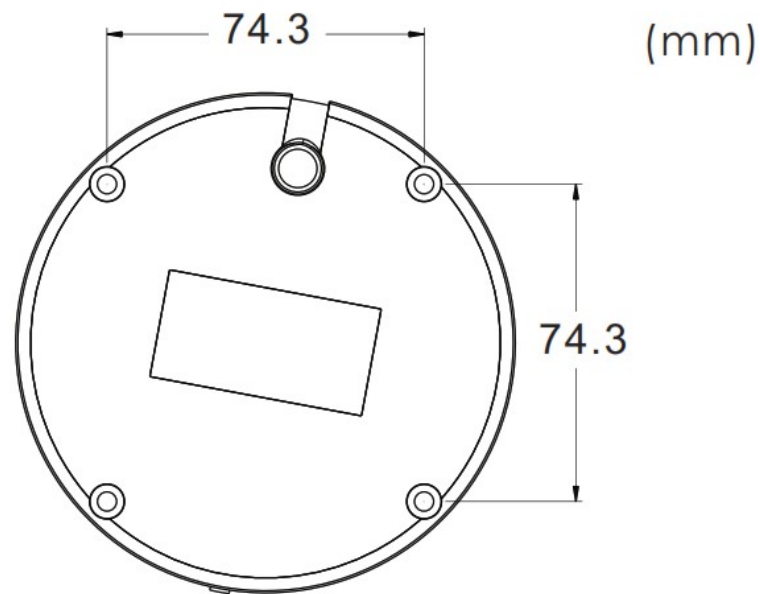


1. Loosen the nut from the main element.
2. Run the network cable (without RJ 45 connector) through the both elements. Then crimp the cable with RJ 45 connector.
3. Connect the cable to the hermetic connector. Then tighten the nut and the main cover.

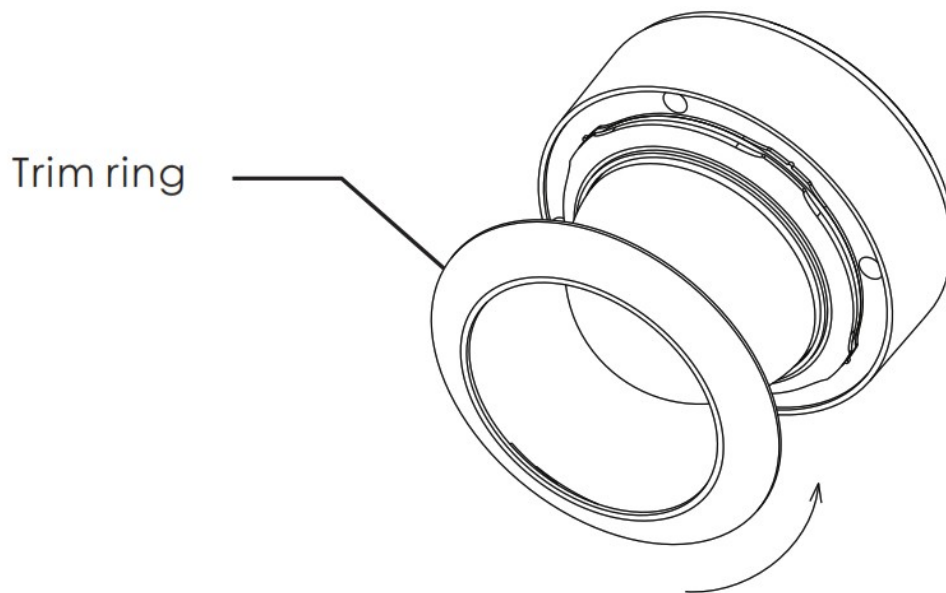
## Installation

Please make sure that the wall or ceiling is strong enough to withstand 3 times the weight of the camera. Please install and use the camera in the dry environment. You'd better install back the lower dome less than 4 hours after removing it. Do not remove the protection film until finishing the installation.

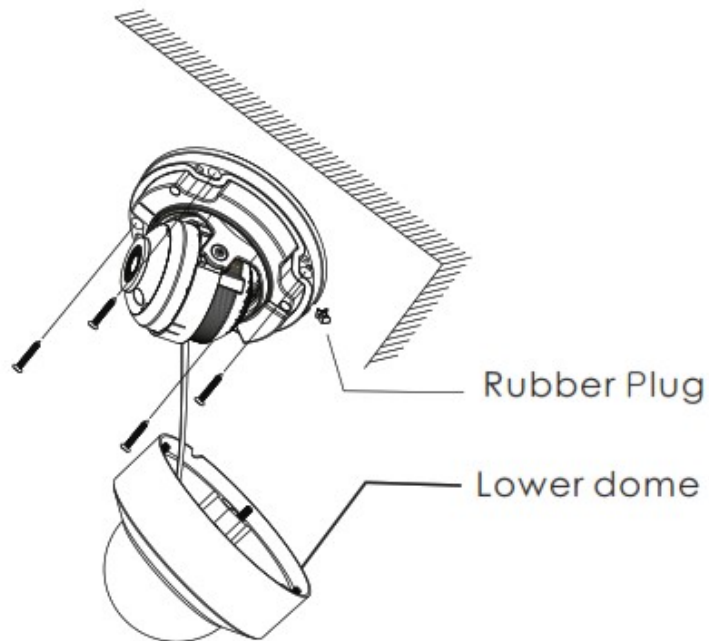
1. Attach the drill template to the place where you want to fix the camera and then drill the screw holes and the cable hole on the wall according to the drill template.



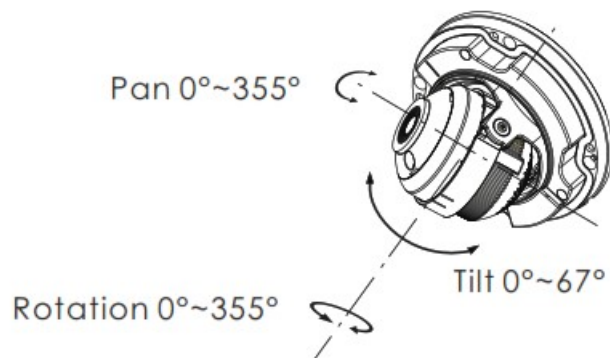
2. Rotate the trim ring anticlockwise to remove it from the camera.



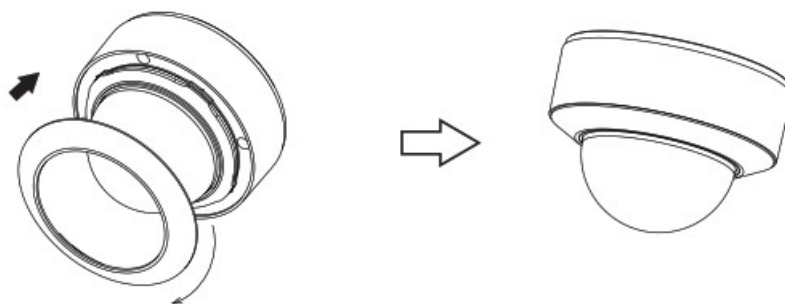
3. Loosen the screws to open the lower dome.
4. Route and connect the cables.
5. Secure the camera to the wall with screws provided as shown below.



6. Three-axis adjustment. Before adjustment, view the image of the camera on a monitor and then adjust the camera according to the figure below to get an optimum angle.



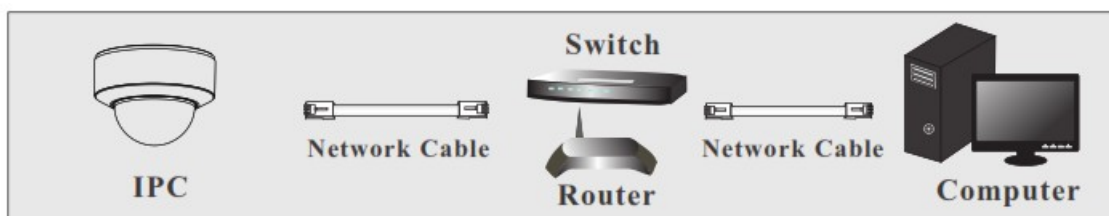
7. screws. Then put the trim ring onto the lower dome and then rotate it clockwise until it is locked. Install the lower dome back to the camera and fix it with the



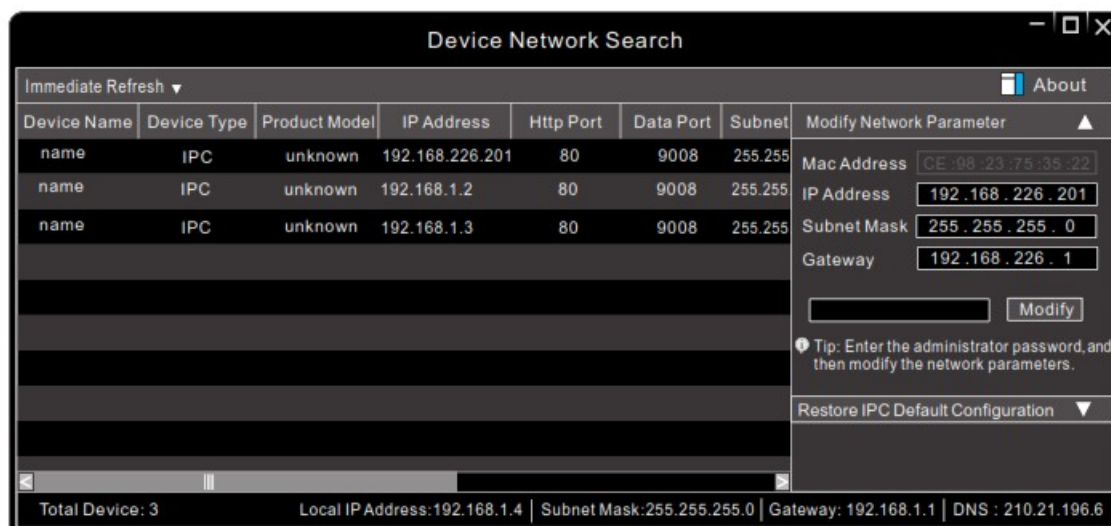
## Network Connection

In LAN, there are two ways to access the camera. 1. Access Through IP-Tool; 2. Direct Access Through WEB Browser

### ● Access Through IP-Tool



1. Make sure that the camera and the PC are connected to the local network.
2. Install the IP-Tool from the CD and run it after installation.



3. Modify the IP address. The default IP address of this camera is 192.168.226.201. Click the information of the camera listed in the above table to show the network information on the right hand.  
Modify the IP address and gateway of the camera and make sure its network address is in the same local network segment as the computer's. Please modify the IP address of your device according to the practical situation.

The 'Modify Network Parameter' dialog box shows the following fields and values:

- Mac Address: CE:98:23:75:35:22
- IP Address: 192.168.1.201
- Subnet Mask: 255.255.255.0
- Gateway: 192.168.1.1

At the bottom, there is a password field (represented by dots) and a 'Modify' button.

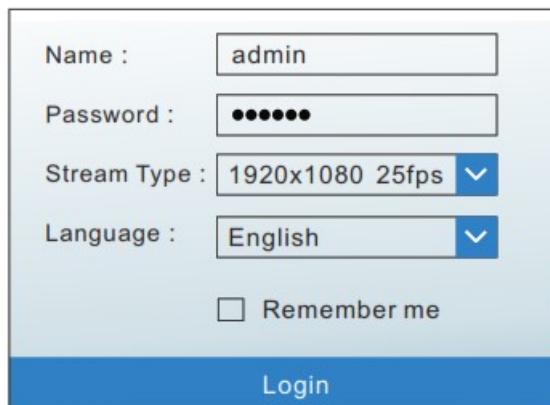
For example, the IP address of your computer is 192.168.1.4. So the IP address of the camera shall be changed to 192.168.1.X. After modification, please enter the password of the administrator and click "Modify" button to modify the settings.



The default password of the administrator is "123456".

4. Double-click the IP address and then the system will pop up the web browser to connect IP-CAM. Follow directions to download and install the plugin in the computer. Then enter the user name and password in the

login interface.



Name : admin

Password : 123456

Stream Type : 1920x1080 25fps

Language : English

☐ Remember me

Login



The default username is admin; the default password is 123456.

### ● Direct Access Through WEB Browser

1. Make sure that the camera and the PC are connected via LAN.
2. Find the IP-Tool from the CD and then install it in the computer.  
After that, run the IP-Tool.
3. Modify the IP address and make sure its network address is in the same local network segment as the computer's.
4. Open your web browser and enter the modified IP address in the address bar to log in the web client. Follow directions to download the plug-in in the computer. After that, enter the default user name and password to log in.

### Tips

#### Transparent Dome Maintenance

Transparent dome is an optical element which is made of plastics.

fingerprints on the dome will reduce the clarity of the image, please keep it clean in the course of installing or using but do not directly touch or wipe it. If there is any dirt or dust, please follow these cleaning tips to clean your dome camera.

\* As dirt, dust or

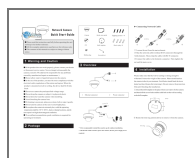
\* If there is water or grease on the dome, please gently wipe off the water or grease with a soft cloth. Then use another clean cloth with a little neutral detergent to wipe it several times until it is clean. Finally, dry it with a soft cloth.

\* If there are fingerprints on the dome, please use a clean cotton cloth or lens cleaning wipe with a little neutral detergent to wipe it several times and then dry it with a soft cloth.

If there is dust on the dome, please use a dry soft brush to gently brush it .

450043001328 A0

### Documents / Resources



[WORLD EYECAM CLEARIP-IPC Network Camera](#) [pdf] User Guide  
CLEARIP-IPC Network Camera, CLEARIP-IPC, Network Camera, Camera