



## WOOX R7279 Smart Switch Module User Guide

[Home](#) » [woox](#) » WOOX R7279 Smart Switch Module User Guide 

### Contents

- [1 WOOX R7279 Smart Switch Module](#)
- [2 Tech support](#)
- [3 Specification](#)
- [4 Safety](#)
- [5 Cleaning and maintenance](#)
- [6 Frequently Asked Questions](#)
- [7 Product Appearance](#)
- [8 Wiring Instructions and Diagrams](#)
- [9 Installation](#)
- [10 Set up Smart Switch Module to WOOX Home app](#)
- [11 Documents / Resources](#)



**WOOX R7279 Smart Switch Module**



Take As Global, SL hereby confirms that the R7279 Smart Switch Module complies with Directive 2014/53 / EU. The full text of the EU Declaration of Conformity is below internet address available: [www.wooxhome.com](http://www.wooxhome.com)



Compliance with the WEEE Directive and waste disposal. This product has been manufactured from parts and materials of high quality that can be reused and can be recycled. Therefore, do not throw this product away with waste normal household appliances at the end of their useful life. Take him away at a collection point for recycling equipment electric and electronic. This is indicated by this symbol on the product, in the user manual and on the packaging. Please consult the local authorities to find out where the point of nearest collection. Help protect the environment by recycling used products.

The packaging materials of the product are made in accordance with our national environmental regulations made from recyclable materials made. Packing materials not together with dispose of with household waste or other waste. Bring them to the collection points prescribed by the local authorities for packing material.

## Tech support

If you need further help or have comments or suggestions please visit: [www.wooxhome.com](http://www.wooxhome.com) or FAQ & Feedback page in the App.

### Tech support contact:

European: [support@wooxhome.eu](mailto:support@wooxhome.eu), +31-(0)76-7114805

Non-EU: [support@wooxhome.com](mailto:support@wooxhome.com)

### How to use FAQ & Feedback in the App:

Step 1: Navigate to "Me" > "FAQ & Feedback".

Step 2: If "Most Asked" and FAQ not help, you could submit your question via "Feedback/Suggestions" we will reply you in 24 hours.

## Specification

- Voltage: 90-250V~50/60Hz
- Max.load(Resistive): 10A/2300W total – Max.load(LED): 1A/230W
- Weight: 43.2g – Dimensions: 52x47x22mm
- Wireless connection: 802.11 b/g/n 2.4GHz WiFi
- Frequency: 2.412~2.472GHz
- Working temperature: 0°C- 40°C
- Working humidity: :S95%RH, no condensation

## **Safety**

- To reduce risk of electric shock, this product should only be opened by an authorized technician when service is required.
- Disconnect the product from the equipment if a problem should occur.
- Read the manual carefully before use. Keep the manual for future reference.
- Only use the device for its intended purposes.
- Do not use the device for other purposes than described in the manual.
- Do not use the device if any part is damaged or defective. If the device is damaged or defective, replace the device immediately.
- The device is suitable for indoor use only. Do not use the device outdoors.
- Do not expose the product to water or moisture.
- Do not touch the device with wet hands.

## **Cleaning and maintenance**

### **Warning**

- Do not use cleaning solvents or abrasives.
- Do not clean the inside of the device.
- Do not attempt to repair the device. If the device does not operate correctly, replace it with a new device.
- Clean the outside of the device using a soft, damp cloth.

## **Frequently Asked Questions**

### **1. Can I share Smart Switch Module with family and friends?**

Yes, you can share your Smart Switch Modules with family. In the app, click the Family name at the top and click on the "Home Management" button, and you will be able to give or revoke sharing permissions.

In order to share, the other user should already have downloaded the app and registered a new account.

### **2. What's the Wireless Range?**

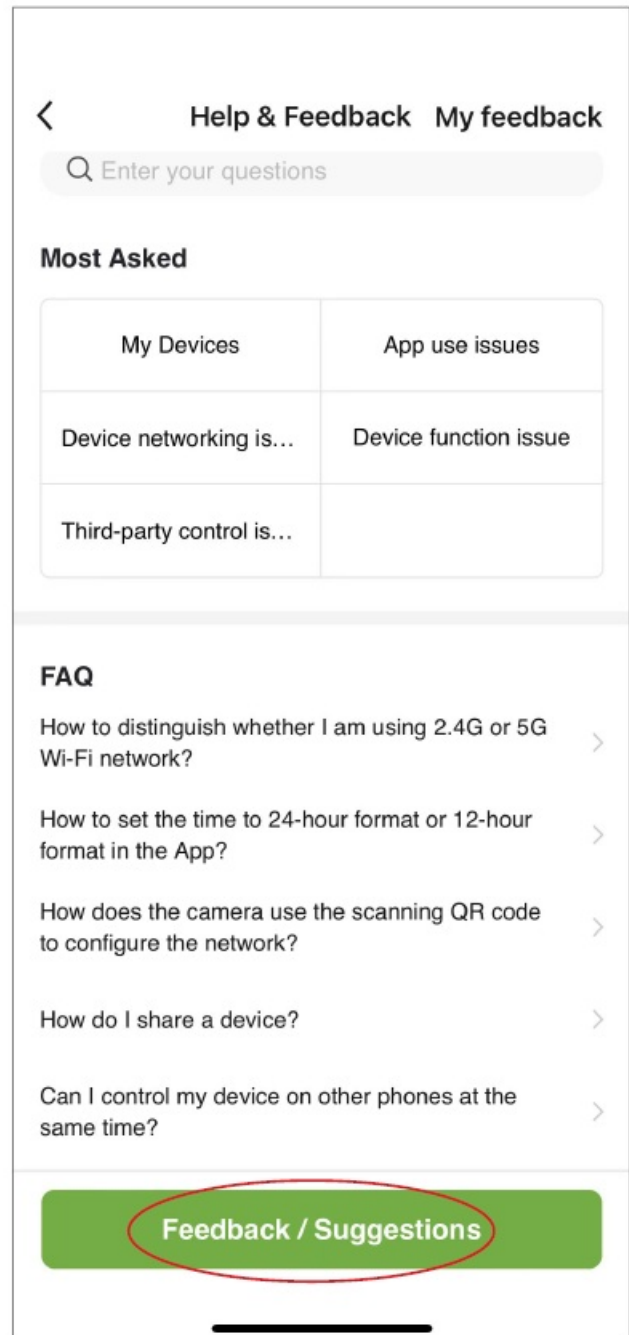
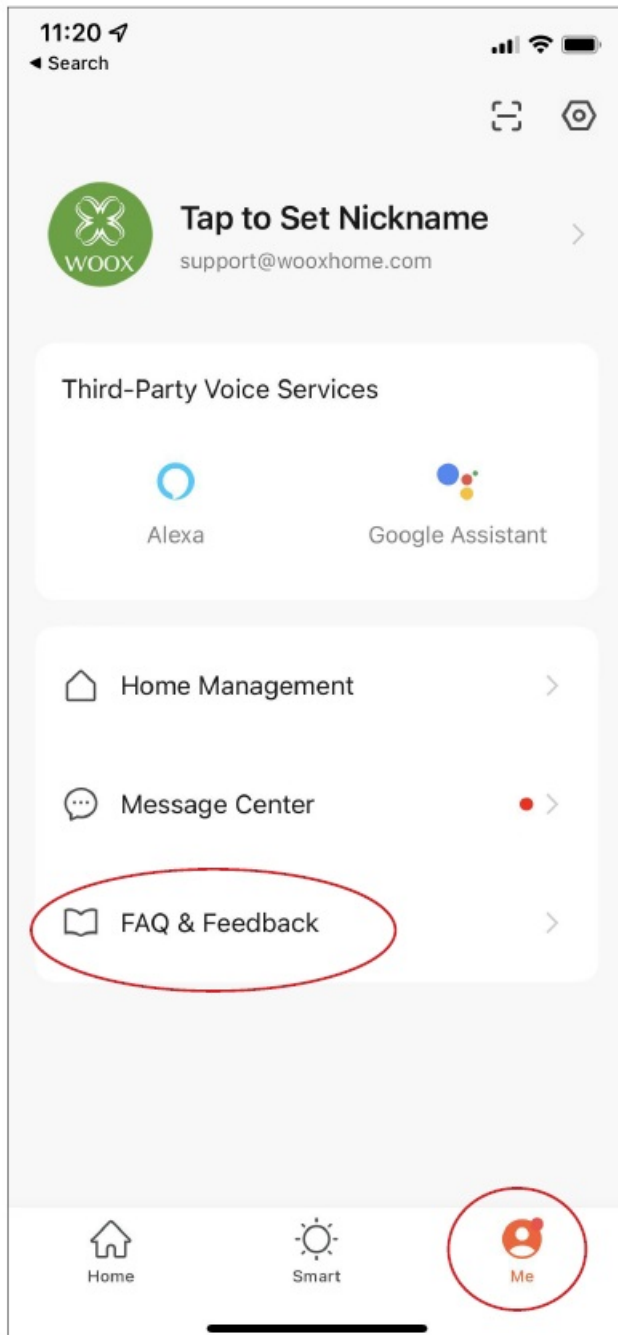
The range of your home Wi-Fi is heavily dependent on your home router and the conditions of the room. Check with your router specifications for exact range data. Typically it's 10-30 meters in room.

### **3. How many Smart Switch Module can I control?**

WOOX Home app can control an unlimited amount of devices in an unlimited amount of locations. Your router may have a limit of how many devices can be connected to one router.

### **4. My device can't be connected to network with App**

1. Make sure the device is under the config status (indicator light is flashing quickly).
  2. Make sure the Wi-Fi is available and the device is not far away from the router.
  3. Make sure the Wi-Fi password you input is correct.
5. My device shows offline in my App
1. Make sure the device is powered on.
  2. Make sure the network is stable and the Wi-Fi name and password not modified. If not, add device again.
  3. If the network is normal, but its still offline. Check if there are too many Wi-Fi connections. You can restart your router to check the status of the device.



### WOOX Home Youtube Channel

You could also find WOOX product videos in Youtube by searching “woox home” or “WOOX + model number”.

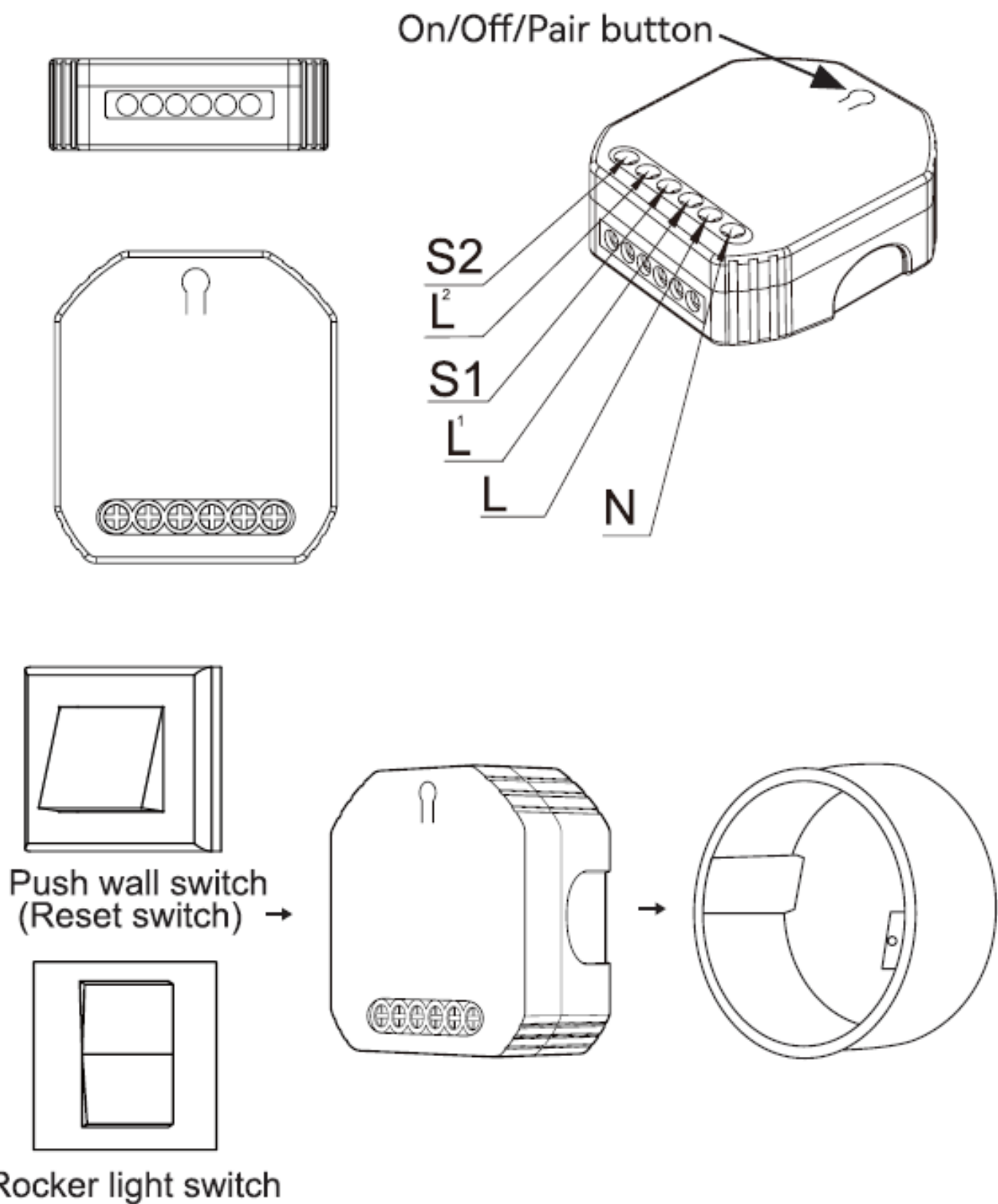
### Facebook group support

We also create a facebook group for technical support. Searching “WOOX HOME users” to join the group and leave your question.

WOOX Home app QR code



Product Appearance

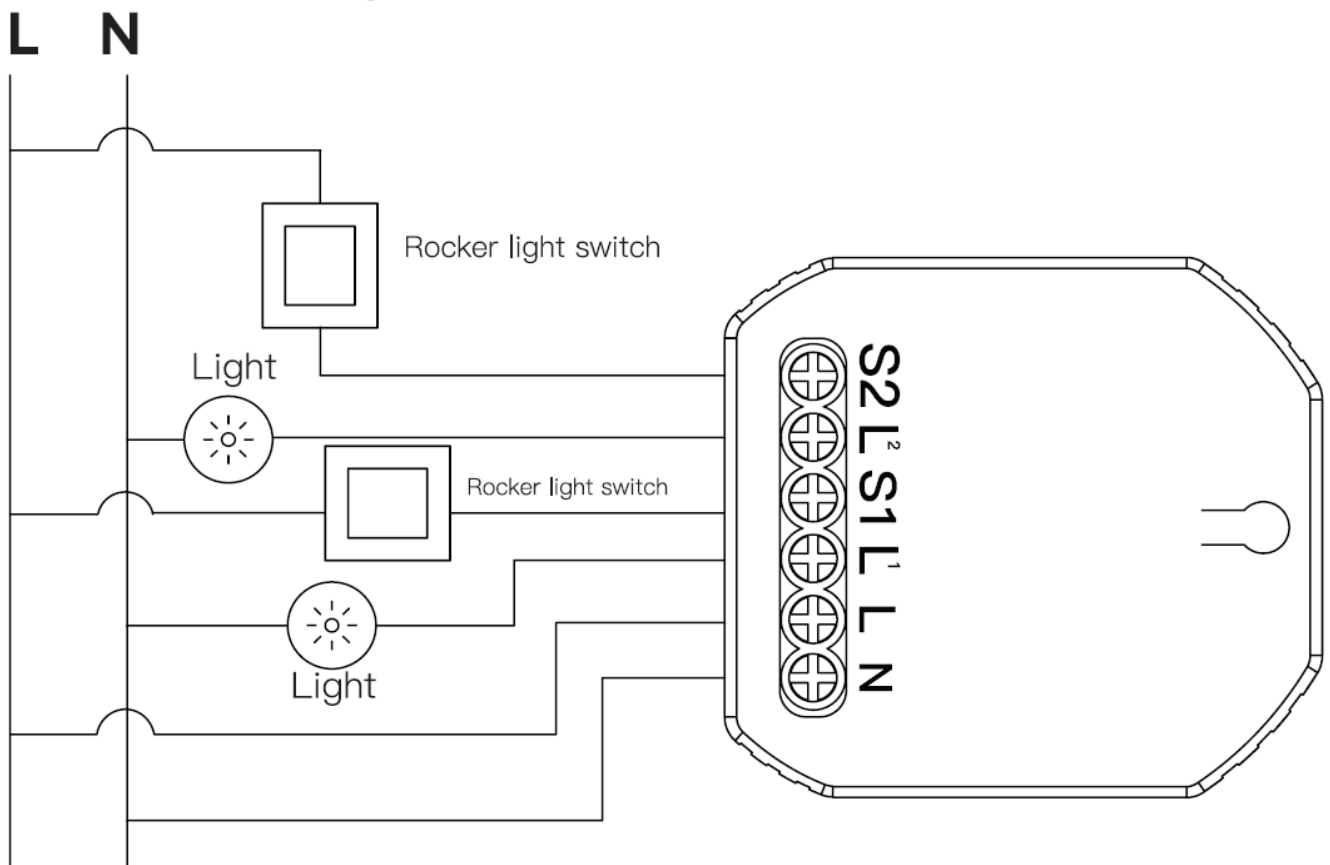


## Wiring Instructions and Diagrams

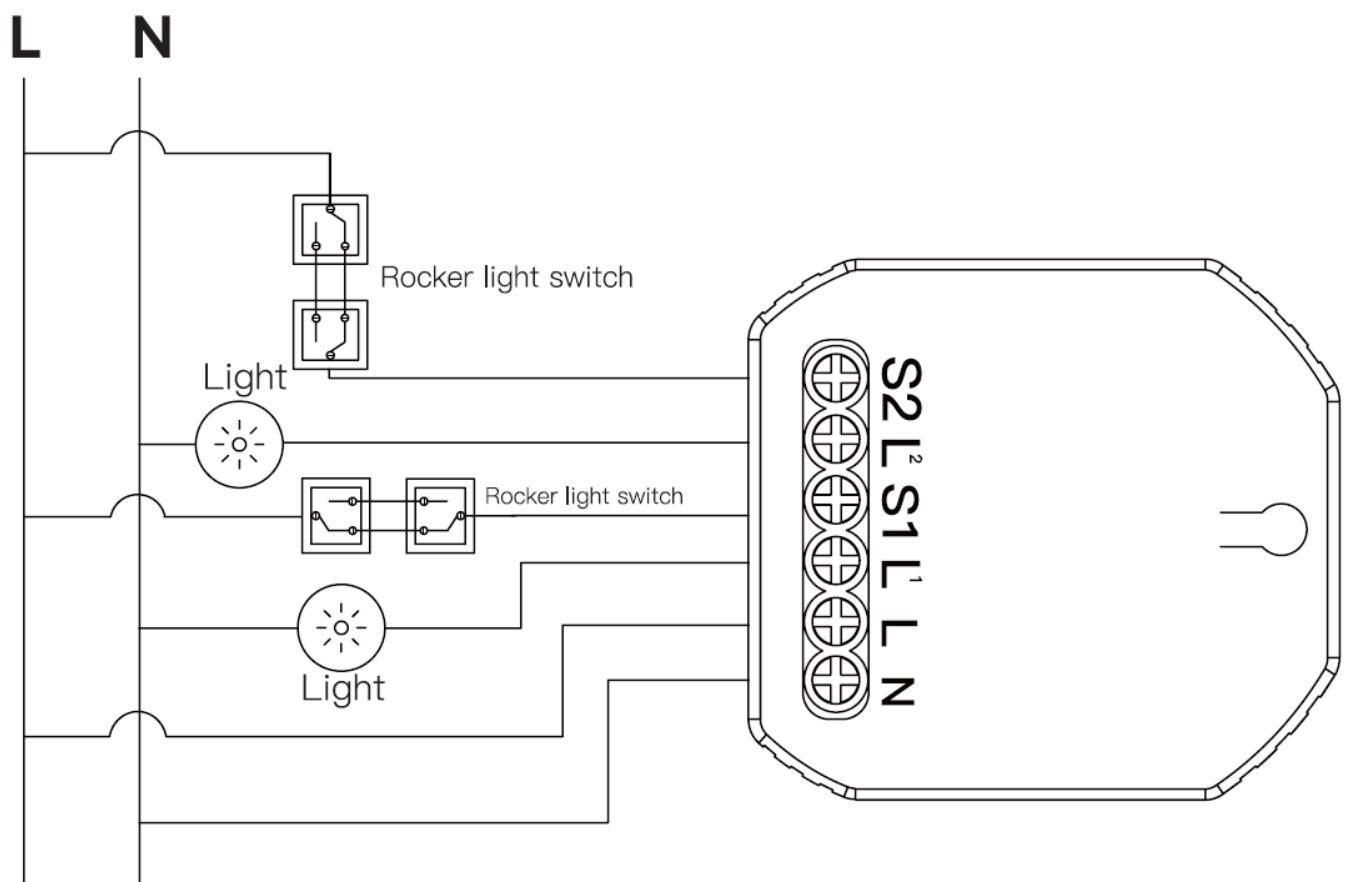
1. Turn off the power supply before carrying out any electrical installation work.
2. Connect wires according to the wiring diagram.
3. Insert the module into the junction box.
4. Connect the power supply and follow switch module configuration instructions.

## Wiring Diagram

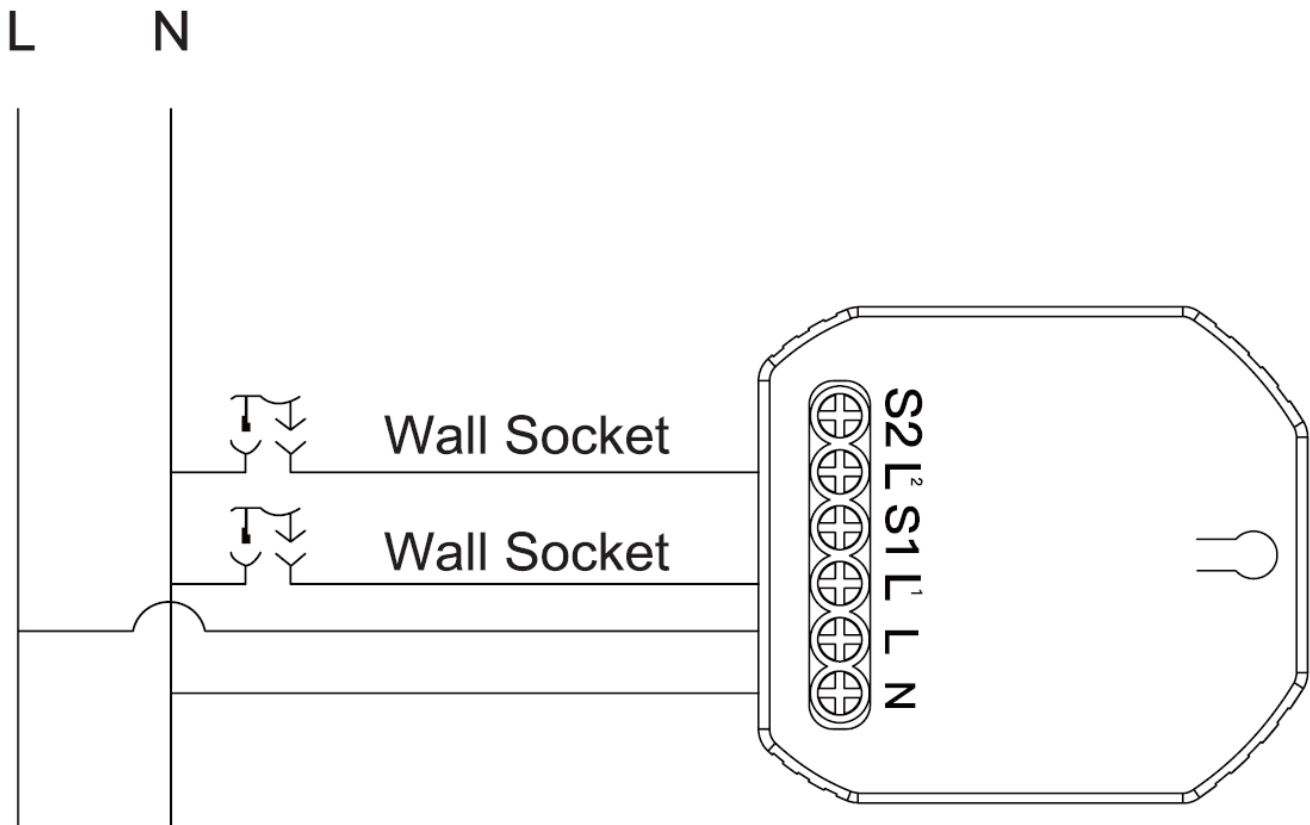
### With one 2 Gang switch



**With 2 Gang 2 Way switch**



**With Wall Socket**



## Installation

### Step 1:

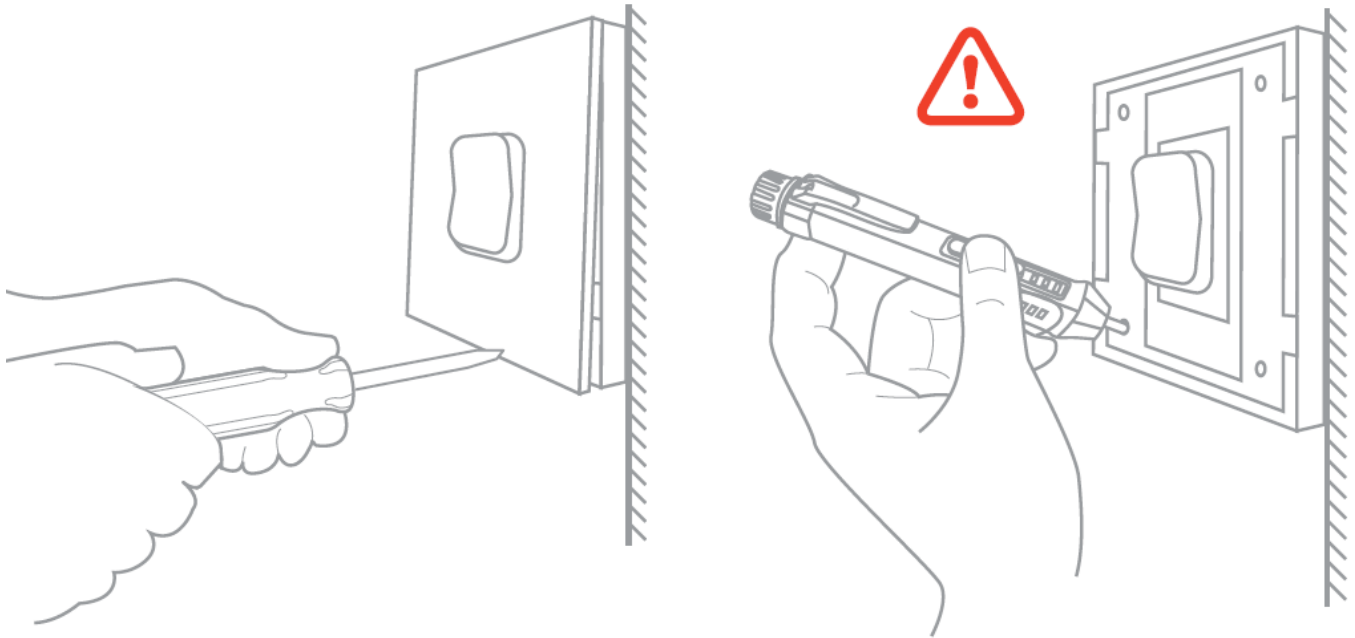
- Turn off the circuit breaker and use the electrical tester to test the power.
- Ensure the ff before w g.



**Attention:** Please disconnect the power supply before installing or removing the device for avoiding irreversible damage on the device from the electric current or some unpredictable problems such as lamp flashing. Check the wiring diagram on page 8 & 9 before installation.

**Step 2:** Remove the old switch.





### Step 3:

1. Remove the switch and pull it away from the wall. Identify Live Wire.  
Verify power is off:
2. We recommend you remove the faceplate from the old switch and use an electrical tester to test all wires connected to the switch to ensure there is no voltage in the circuit. You may need to turn off more than one circuit breaker.  
**Warnings:** Installation must be carried out by a qualified electrician in accordance with local regulations.
3. Keep the device out of the reach of children.
4. Keep the device away from water, damp or hot environment.
5. Install the device away from strong signal sources such as microwave oven that may cause signal interruption resulted in abnormal operation of the device.
6. Obstruction by concrete wall or metallic materials reduce the elective operation range of the device and should be avoided.
7. Do NOT attempt to disassemble, repair or modify the device.

### Requirement to use

- WOOX Home app
- WLAN-enabled router: 2.4GHz (Separate band)

### Set up Smart Switch Module to WOOX Home app

1. Download and install the app “WOOX Home” from Apple App Store or Google Play Store on your smartphone.
2. Open bluetooth on smartphone.
3. Enable bluetooth and location permission for WOOX Home app, so that the app can find Smart Switch Module via bluetooth.
4. Launch the app “WOOX Home”.

- ## Documents / Resources

