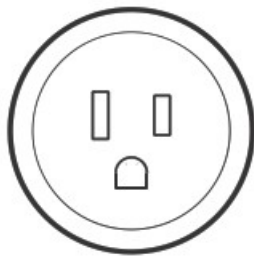




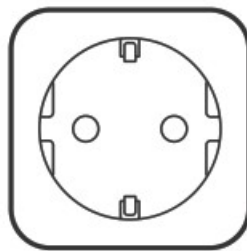
Woolley SA-028 Zigbee Smart Plug or Socket User Guide

[Home](#) » [Woolley](#) » Woolley SA-028 Zigbee Smart Plug or Socket User Guide 

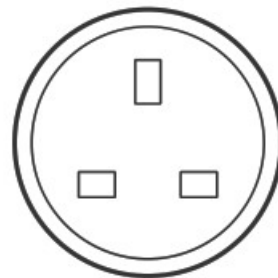
Zigbee Smart Plug Quick Guide V1.1



SA-028
(Type B)



SA-029
(Type F)



SA-030
(Type G)

Contents

- [1 Download the eWeLink App](#)
- [2 Power on](#)
- [3 Add sub-device to the Zigbee gateways](#)
- [4 Documents / Resources](#)
- [5 Related Posts](#)

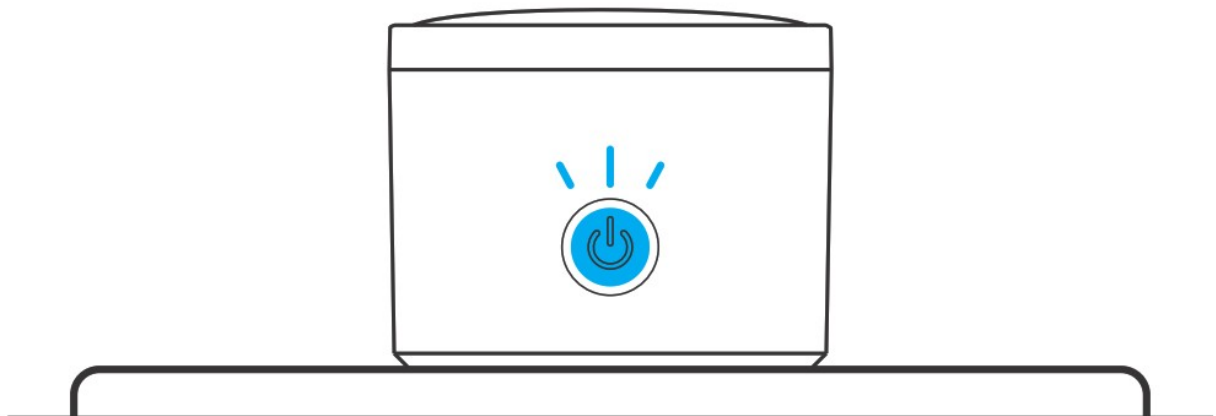
Download the eWeLink App



<http://app.coolkit.cc/dl.html>

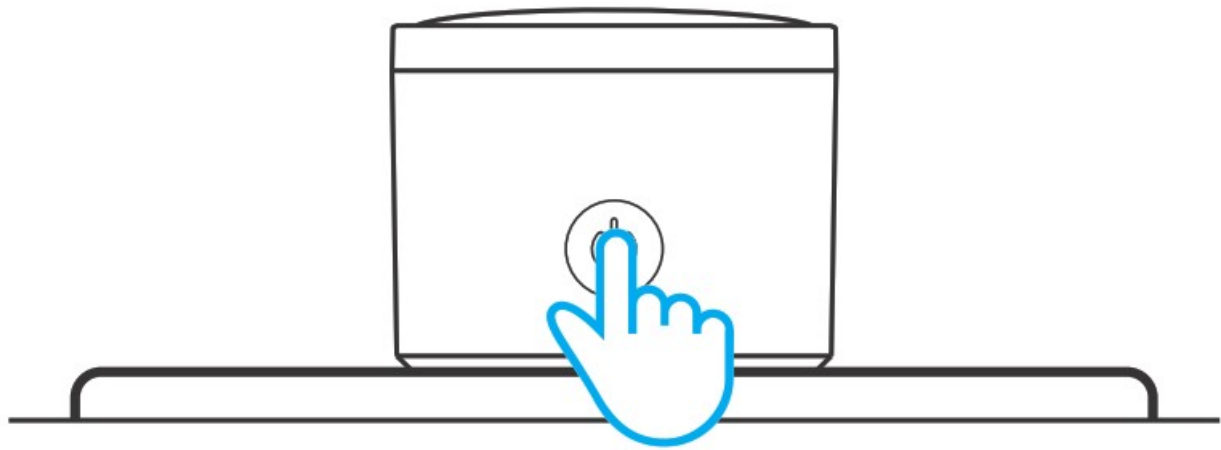
Add eWeLink Zigbee Bridge

Power on



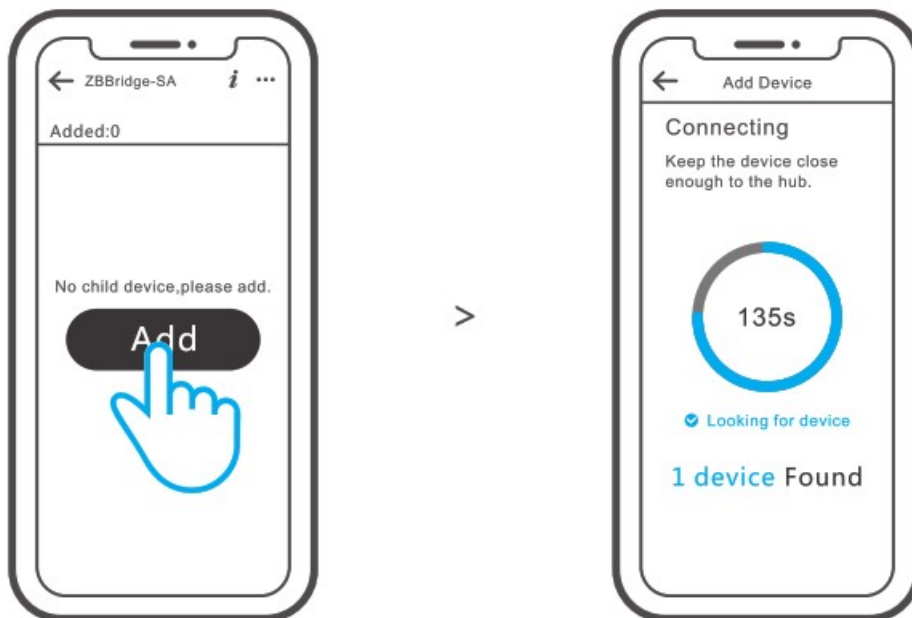
After powering on, the device will enter the pairing mode defaulted during the first use and the Zigbee LED signal indicator will "flash slowly".





The device will exit the pairing mode if you do not operate it within 3 minutes. When you want to enter the pairing mode – again, long-press the button on the device for 5 seconds until the Zigbee signal light “flashes slowly” and release.

Add sub-device to the Zigbee gateways



Open eWeLink App, tap “Add” icon on the Zigbee Bridge interface, then wait to looking for and add the sub-devices.

More APP application platforms and gateway recommendations



SmartThings



Amazon Alexa

This device supports the following gateways besides eWeLink Zigbee Bridge:

Echo Studio
Echo (4th Gen)
Echo Plus (model: ZE39KL)
2nd Gen Echo Show (model: DW84JL)
2nd Gen Echo Plus (model: L9D29R)
Samsung SmartThings hub

Gateway adding instruction:

1. Refer to the gateway user manual to download the matched APP and get it paired.
2. Set the device to the pairing mode.
3. Add device according to the prompt of APP. Please select eWeLink when adding.



If the addition failed, move the sub-device closer to the Bridge and try again.

FCC Warning

Changes or modifications not expressly approved by the party responsible for compliance could avoid the user's authority to operate the equipment.

This device complies with part 15 of the FCC Rules. Operation is subject to the following two conditions: (1) This device may not cause harmful interference, and (2) this device must accept any interference received, including interference that may cause undesired operation.

FCC Radiation Exposure Statement:


This equipment complies with FCC radiation exposure limits set forth for an uncontrolled environment. This transmitter must not be co-located or operating in conjunction with any other antenna or transmitter.

Note:

This equipment has been tested and found to comply with the limits for a Class B digital device, pursuant to part 15 of the FCC Rules. These limits are designed to provide reasonable protection against harmful interference in a residential installation. This equipment generates, uses, and can radiate radio frequency energy and, if not installed and used in accordance with the instructions, may cause harmful interference to radio communications. However, there is no guarantee that interference will not occur in a particular installation. If this equipment does cause harmful interference to radio or television reception, which can be determined by turning the equipment off and on, the user is encouraged to try to correct the interference by one or more of the following measures:

- Reorient or relocate the receiving antenna.
- Increase the separation between the equipment and receiver.
- Connect the equipment into an outlet on a circuit different from that to which the receiver is connected.
- Consult the dealer or an experienced radio/TV technician for help.

Documents / Resources

	Woolley SA-028 Zigbee Smart Plug or Socket [pdf] User Guide SA-028, SA028, 2AZJL-SA-028, 2AZJLSA028, SA-029, SA-030, Zigbee Smart Plug or Socket, SA-028 Zigbee Smart Plug or Socket
---	--

