



## WOOLLEY BSD29 WiFi Smart Plug Socket User Manual

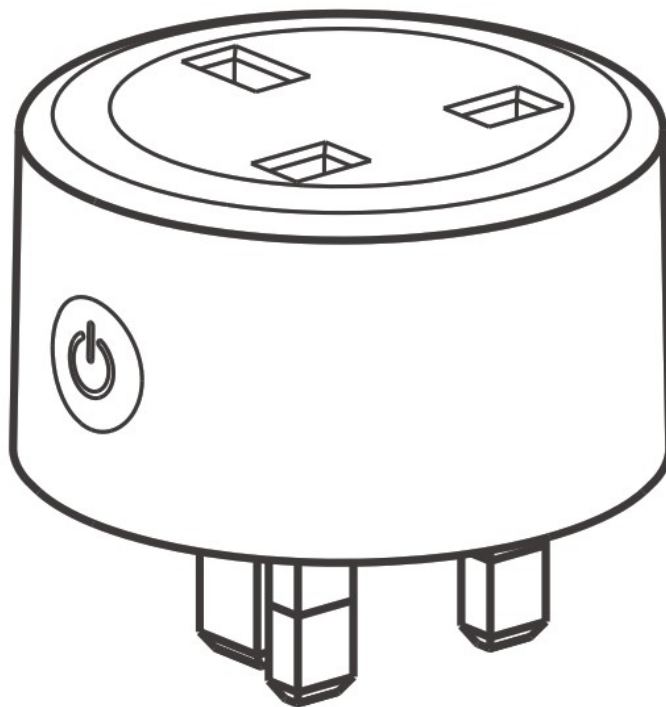
[Home](#) » [Woolley](#) » WOOLLEY BSD29 WiFi Smart Plug Socket User Manual 

# WOOLLEY

Wi-Fi



**BSD29**  
**User manual V1.0**



**Smart Plug**

#### **Contents**

[1 Specifications](#)

[2 Add Device to eWeLink APP](#)

[3 Documents / Resources](#)

[3.1 References](#)

[4 Related Posts](#)

## **Specifications**

Model	BSD29
Input	100-250V— 50/60Hz
Output	100-250V— 50/60Hz
Wi-Fi	IEEE 802.11 b/g/n, 2.4GHz
APP Operating Systems	Androids & iOS
Working Temperature	-20°C-60°C
Product size	58x58x32.5mm

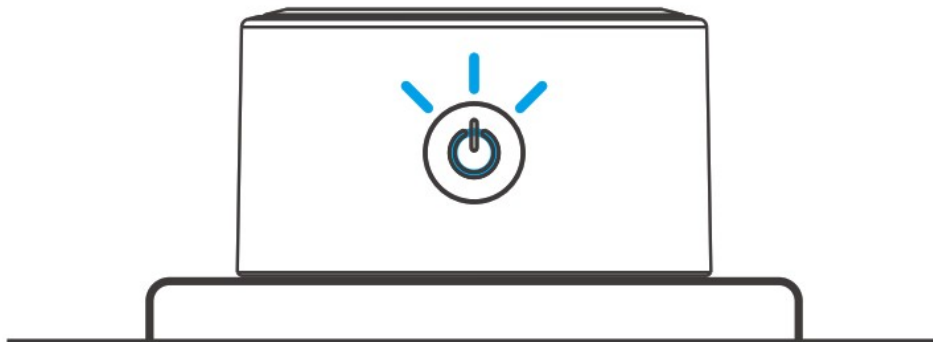
## **Add Device to eWeLink APP**

1. Download eWeLink APP.



<http://app.coolkit.cc/dl.html>

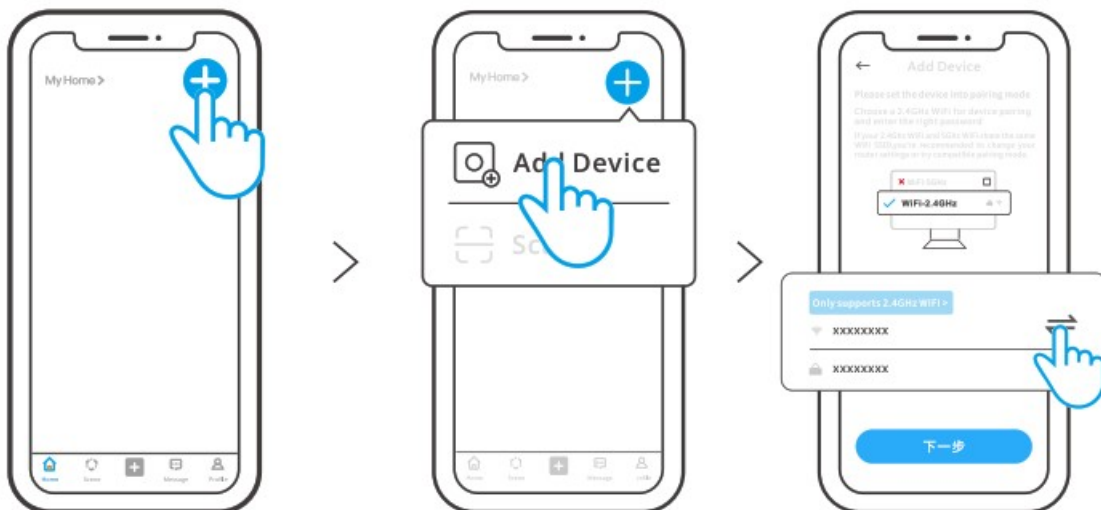
2. Connect your phone to 2.4GHz WiFi and turn on Bluetooth.
3. Power on



After powering on, the device will enter the pairing mode during the first use. The Wi-Fi LED indicator changes in a cycle of two short and one long flash.

**Note:** The device will exit the pairing mode, if not paired within 3mins. If enter again, Long press pairing button for more than 5 seconds until blue LED indicator blink two short and one long to enter pairing mode.

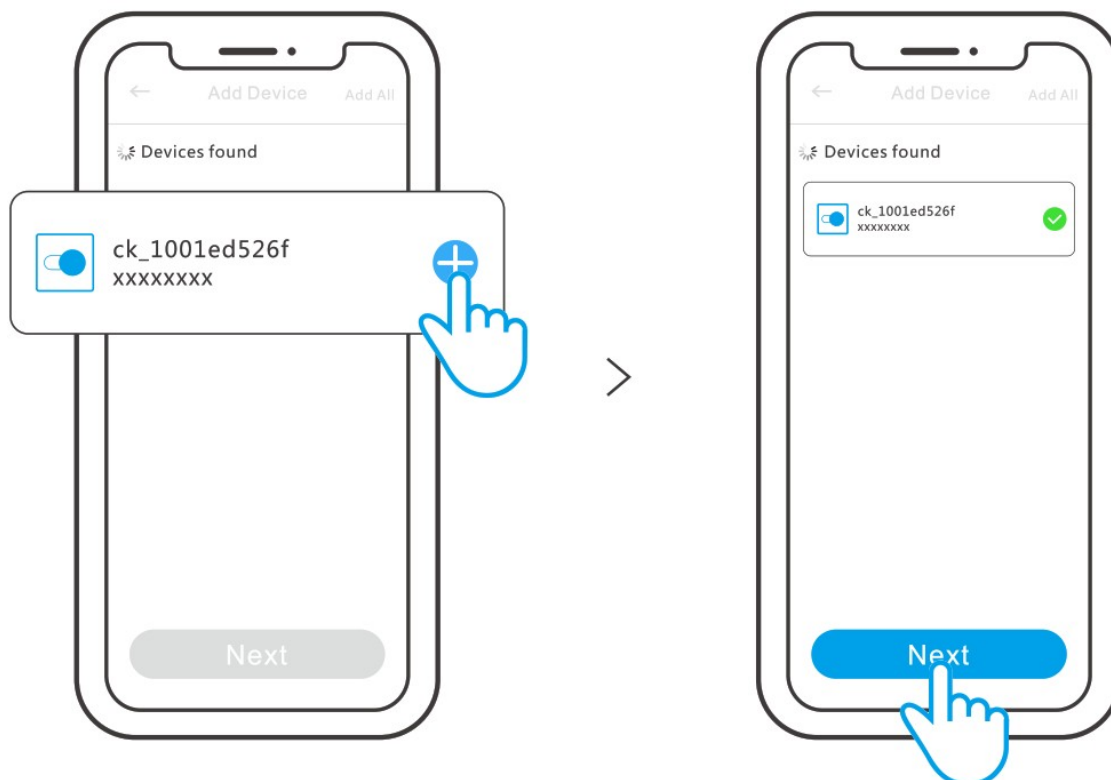
4. Add Device



Open the APP, click "+", add devices, and operate according to the APP prompts

Note:

1. The name of scanned device will be changed, please refer to the actual situation;
  2. WiFi information in the manual is for display and don't have any practical effect. Please refer to the actual WiFi.
5. Click "+", select the device to add, "complete adding".



### SAR Warning

Under normal use of condition, this equipment should be kept a separation distance of at least 20 cm between the antenna and the body of the user.

### WEEE Disposal and Recycling Information

All products bearing this symbol are waste electrical and electronic equipment (WEEE as in directive 2012/19/EU) which should not be mixed with unsorted household waste.

Instead, you should protect human health and the environment by handing over your waste equipment to a designated collection point for the recycling of waste electrical and electronic equipment, appointed by the government or local authorities. Correct disposal and recycling will help prevent potential negative consequences to the environment and human health. Please contact the installer or local authorities for more information about the location as well as terms and conditions of such collection points.



Made in China

### Documents / Resources

	<p><a href="#">WOOLLEY BSD29 WiFi Smart Plug Socket</a> [pdf] User Manual          BSD29 WiFi Smart Plug Socket, BSD29, WiFi Smart Plug Socket, Smart Plug Socket, Plug Socket, Socket</p>
--	--

### References

- [User Manual](#)

Manuals+.