

Woodpecker Multi Router Stylus Adjustment Block Upgrade Kit



Woodpecker Multi Router Stylus Adjustment Block Upgrade Kit Owner's Manual

[Home](#) » [WOODPECKER](#) » Woodpecker Multi Router Stylus Adjustment Block Upgrade Kit Owner's Manual 

Contents

- [1 Woodpecker Multi Router Stylus Adjustment Block Upgrade Kit](#)
- [2 Product Information](#)
- [3 Product Usage Instructions](#)
- [4 OVERVIEW](#)
- [5 INSTALLING](#)
- [6 USING THE STYWS ADJUSTMENT BLOCK](#)
- [7 Documents / Resources](#)
 - [7.1 References](#)

Woodpecker

Woodpecker Multi Router Stylus Adjustment Block Upgrade Kit



Product Information

Specifications

- Product Name: Multi-Router Stylus Adjustment Block Upgrade Kit
- Manufacturer: Woodpeckers LLC
- Model: Not specified
- Compatibility: Older Multi-Router Machines

Product Usage Instructions

Installing the Stylus Block Upgrade Kit for the Multi-Router

1. The Stylus Adjustment Block Upgrade Kit for the Multi-Router is an updated, tighter tolerance version of the stylus block system for older Multi-Router Machines.
2. Begin by removing the existing stylus block assembly.
3. Install the Stylus Adjustment Block Upgrade into the groove on the vertical slide of the Multi-Router. (Refer to Figure 1)
4. Feed the Lead Screw through the hole in the vertical slide, then thread through the Stylus Block until the Stylus Block is about halfway along the thread of the Lead Screw.
5. Install the Washer and the Nylon Lock Nut on the bottom side of the Lead Screw, tighten until play in the Lead Screw is gone by using a 5/8 wrench on the Lead Screw and a 7/16 wrench on the Nylon Lock Nut.

NOTE: If the Nylon Lock Nut is too tight, it may be very difficult to turn the Lead Screw by hand.

1. Test function of the Lead Screw. Turning the Lead Screw should raise or lower the Stylus Block. There should not be excessive up/down play and the Lead Screw should be able to spin without the use of a tool.
2. Install the Ratchet Knob with the Washer onto the threaded hole on the backside of the Vertical Slide. (Refer to Figure 2)
3. Install the Stylus Pin & Bearing and lock it into place with the Knob.

II. Using the Stylus Adjustment Block

Woodpeckers, LLC
Strongsville, Ohio
woodpeck.com

Frequently Asked Questions (FAQ)

Q: Where can I find the most current version of the instruction manual?

A: The most current version of our instruction manuals are always available to download/print at woodpeck.com via the tool's page.

(Located in the bottom section of the tool page under the Additional Information or Instructions tabs.)

Q: How can I stay updated on new products and sales?

A: Subscribe to our eClub located at the top center of our webpage at woodpeck.com to be the first to know about all the new products and sales.

Q: How can I stay up-to-date on tool tips and tricks?

A: Subscribe to our YouTube channel to stay up-to-date on all the latest tool tips and tricks.

Q: How can I interact with Woodpeckers?

A: Follow us on Facebook and Instagram to stay connected with us!

Q: Are there any warnings or precautions for using this product?

A: Yes, this product can expose you to chemicals, including chromium, which is known to the State of California to cause cancer and birth defects or other reproductive harm. For more information, visit www.P65Warnings.ca.gov.

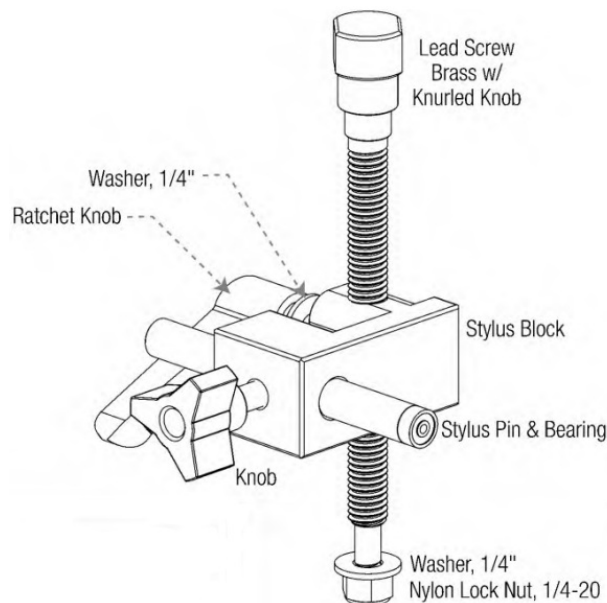
Scan the QR code above to watch the videos or visit woodpeck.com under the video tab towards the bottom of the product page.



If you think you're missing anything, email us at mmfroom@woodpeck.com.

You can also call us at 800-752-0725 from 9:00 a.m. to 4:00 p.m. EST Monday – Friday.

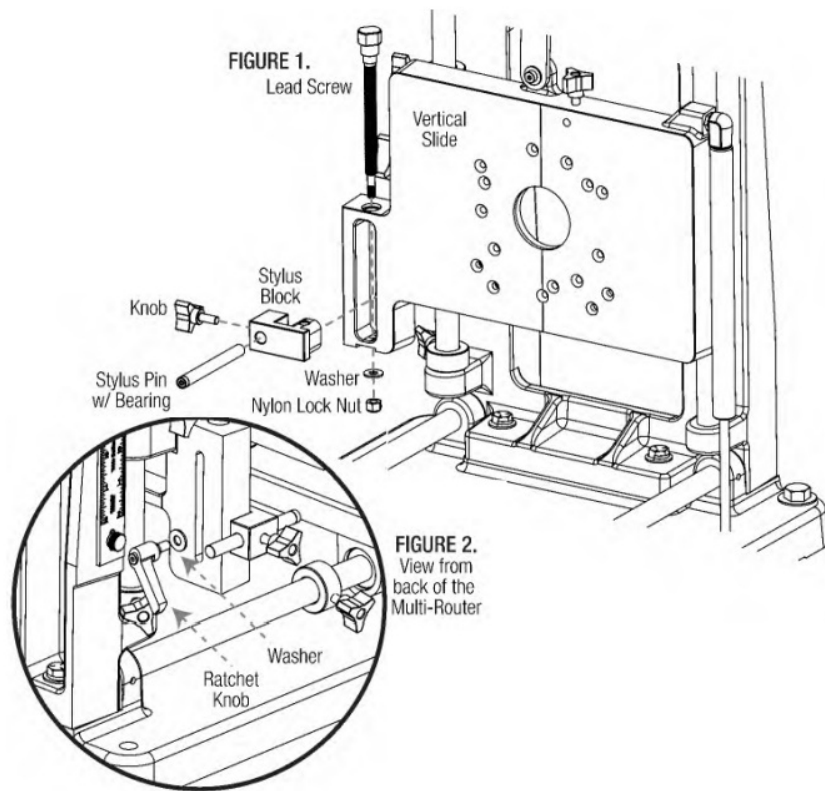
OVERVIEW



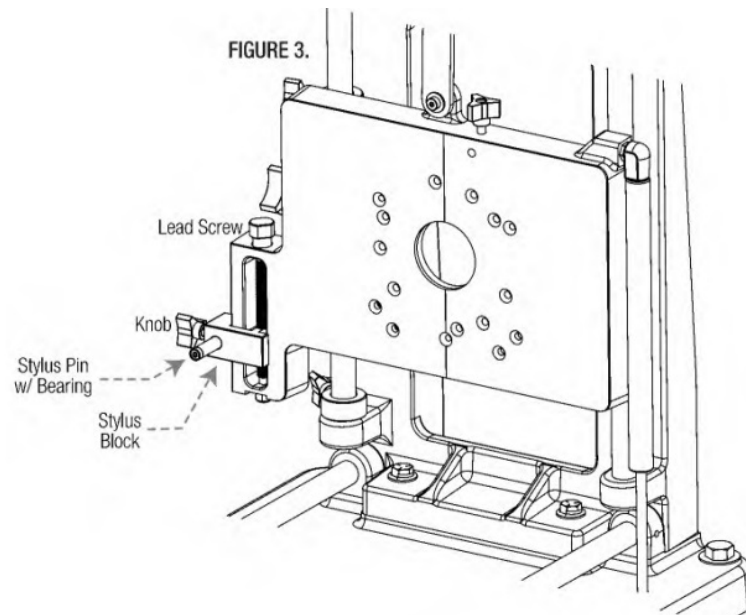
INSTALLING

INSTALLING THE STYLUS BLOCK UPGRADE KIT FOR THE MULTI-ROUTER

1. The Stylus Adjustment Block Upgrade Kit for the Multi-Router is an updated, tighter tolerance version of the stylus block system for older Multi-Router Machines.
2. Begin by removing the existing stylus block assembly.
3. Install the Stylus Adjustment Block Upgrade into the groove on the vertical slide of the Multi-Router. FIGURE 1.
4. Feed the Lead Screw through the hole in the vertical slide, then thread through the Stylus Block until the Stylus Block is about half way along the thread of the Lead Screw.



5. Install the Washer and the Nylon Lock Nut on the bottom side of the Lead Screw, tighten until play in the Lead Screw is gone by using a 5/8" wrench on the Lead Screw and a 7/16" wrench on the Nylon Lock Nut.
NOTE: If the Nylon Lock Nut is too tight, it may be very difficult to turn the Lead Screw by hand.
6. Test function of the Lead Screw. Turning the Lead Screw should raise or lower the Stylus Block. There should not be excessive up/down play and the Lead Screw should be able to spin without use of a tool.
7. Install the Ratchet Knob and with the Washer onto the backside of the Vertical Slide, into the threaded hole on the Stylus Block. FIGURE 2.
8. Install the Stylus Pin & Bearing, and lock it into place with the Knob. FIGURE 3.



USING THE STYWS ADJUSTMENT BLOCK

1. The Stylus Adjustment Block Upgrade functions much the same as the original stylus block.
2. To micro-adjust the position of the Stylus, loosen the Ratchet Knob, then turn the Lead Screw by hand to the desired position, then lock down the Ratchet Knob to secure the position.

3. To move the Stylus Pin in or out, loosen the Knob, slide the Stylus Pin to the desired position, then lock down the Knob to secure the position.

Woodpeckers, LLC Strongsville, Ohio

woodpeck.com

© 2021 Woodpeckers, LLC

At Woodpeckers we are constantly reviewing & improving our tools. The most current version of our instruction manuals are always available to download/print at woodpeck.com via the tool's page.

(Located in the bottom section of the tool page under the "Aciditional information" or "instructions" tabs.)

Be the first to know all the new products & sales by subscribing to our eClub.


(Located at the top center of our webpage woodpeck.com./Subscribe to our YouTube channel to stay up-to-date on all the latest tool tips & tricks.

Interact with us! Follow us on Facebook & Instagram!

WARNING! This product can expose you to chemicals, including chromium, which is knonn to the State of California to cause cancer and ith delects or other reproductive harm. For mare infarmation go to

www.P65Wamings.ca.gov

Documents / Resources

	<p>Woodpecker Multi Router Stylus Adjustment Block Upgrade Kit [pdf] Owner's Manual Multi Router Stylus Adjustment Block Upgrade Kit, Multi Router, Stylus Adjustment Block Upgra de Kit, Adjustment Block Upgrade Kit, Block Upgrade Kit, Upgrade Kit, Kit</p>
---	---

References

- [W Woodworking Tools Designed and Made in USA | Woodpeckers](#)
- P65Warnings.ca.gov
- [User Manual](#)

[Manuals+](#), [Privacy Policy](#)

This website is an independent publication and is neither affiliated with nor endorsed by any of the trademark owners. The "Bluetooth®" word mark and logos are registered trademarks owned by Bluetooth SIG, Inc. The "Wi-Fi®" word mark and logos are registered trademarks owned by the Wi-Fi Alliance. Any use of these marks on this website does not imply any affiliation with or endorsement.