



# WONEGG

## Quick Start Guide 18 Egg Automatic Incubator

### Contents [ [hide](#) ]

#### [1 STEPS TO FOLLOW:](#)

#### [2 Documents / Resources](#)

##### [2.1 References](#)

### STEPS TO FOLLOW:

1. Begin by unboxing your incubator. The Incubator should be placed in a well-ventilated room away from direct sunlight. The temperature in this room should be between 22 and 33°C with no big temperature fluctuations
2. Turn on the incubator
3. Make sure the egg turner gear is connected to the turning plate. Test the egg turner by pressing the + (Plus) button.
4. We recommend starting with one water bottle connected to the small water tray and monitoring the humidity for at least 24 hours before setting the eggs. Open and close the vent to maintain humidity in range.

Day 1-18: 45 – 65%

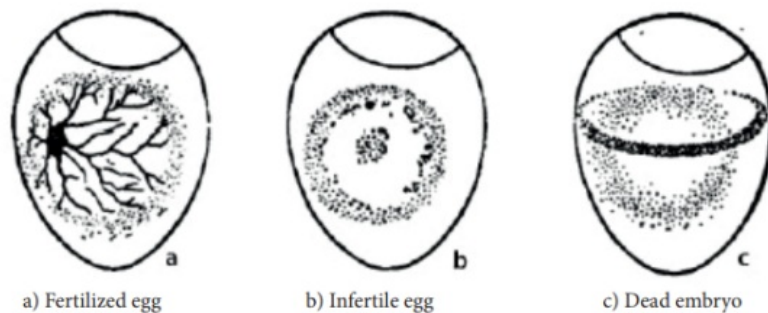
Day 19-21: Above 65%

Daily fluctuations are normal. Trying to maintain constant humidity for 18 days will be extremely difficult in mini-incubators. Maintaining average humidity over the incubation period is key. The incubator preset to maintain 37.8.0°C and to alarm below 45%RH.

5. After 24 hours of running, you are ready to start incubating. Set the eggs. It will take a

couple of hours to get all the eggs up to temperature.

6. Keep an eye on the humidity reading and fill the water bottle when needed. Normally every 2 to 3 days.
7. Candle eggs on day 10 and get rid of infertile eggs.



8. Candle eggs again on day 18. Remove the egg rollers and lay the eggs down on the grid.
9. Fill both water bottles and close the vent to increase the humidity above 65%. This is very important to ensure that the eggshells are soft enough for the chicks to break through. In case of very thick shells and/or in dry areas it is recommended to spray the eggs with a very fine mist twice a day during this period. Do not open the incubator frequently when the chicks start to hatch. If you do, the loss of humidity will cause the eggshells of the unhatched eggs to dry out and they won't be able to break through the egg.
10. It is not unheard of for chicks to hatch on day 22 or 23, so keep the incubator running.
11. Once you are certain that all eggs have hatched, remove chicks from incubator and wash it thoroughly. Do not store incubator when there is any water or moisture present. It needs to be completely dry.
12. After washing your incubator, you are ready for your next batch.

For more information: Please contact [info@deltaincubators.co.za](mailto:info@deltaincubators.co.za)

Visit our Youtube Channel (Delta Incubators) for a "How-To" video.

Copyright Delta Incubators [www.deltaincubators.co.za](http://www.deltaincubators.co.za)

## Documents / Resources



[WONEGG B0CSXW6M4Z 18 Egg Automatic Incubator \[pdf\]](#) User Guide  
B0CSXW6M4Z 18 Egg Automatic Incubator, B0CSXW6M4Z, 18 Egg Automatic Incubator, Automatic Incubator, Incubator

## References

- [User Manual](#)

WONEGG

18 Egg Automatic Incubator, Automatic Incubator, B0CSXW6M4Z, B0CSXW6M4Z 18 Egg Automatic Incubator, Incubator, WONEGG

## Leave a comment

Your email address will not be published. Required fields are marked \*

Comment \*

Name

Email

Website

☐ Save my name, email, and website in this browser for the next time I comment.

**Post Comment**

**Search:**

e.g. whirlpool wrf535swhz

**Search**

[Manuals+](#) | [Upload](#) | [Deep Search](#) | [Privacy Policy](#) | [@manuals.plus](#) | [YouTube](#)

This website is an independent publication and is neither affiliated with nor endorsed by any of the trademark owners. The "Bluetooth®" word mark and logos are registered trademarks owned by Bluetooth SIG, Inc. The "Wi-Fi®" word mark and logos are registered trademarks owned by the Wi-Fi Alliance. Any use of these marks on this website does not imply any affiliation with or endorsement.