



Wo-We HU-IRC01 Windows Hello Face Recognition WEBCAM User Manual

[Home](#) » [Wo-We](#) » Wo-We HU-IRC01 Windows Hello Face Recognition WEBCAM User Manual 

WOWE

User Manual
WINDOWS HELLO
FACE RECOGNITION WEBCAM
MODEL: HU-IRC01

Contents

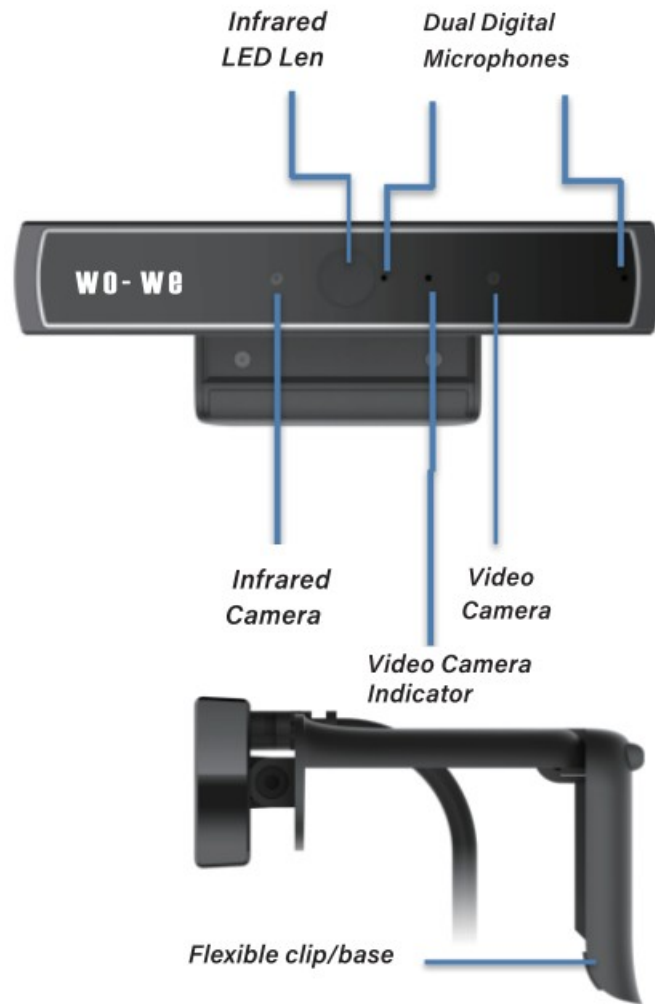
- 1 [Brief Introduction](#)
- 2 [Product Interface Description](#)
- 3 [Package Contents](#)
- 4 [Install the Windows Hello Camera](#)
- 5 [Driver Installation](#)
- 6 [Set up a Windows Hello Face Recognition](#)
- 7 [Specifications](#)
- 8 [Remark](#)
- 9 [Warranty](#)
- 10 [Documents / Resources](#)
 - 10.1 [References](#)

Brief Introduction

wo-we Windows Hello Face Recognition Webcam is a camera that you can use not only as a normal webcam, but also to unlock your computer with your face. Infrared face recognition transmits image data at 30 frames per second, and ordinary RGB cameras transmit image data at 100 frames per second.

Product Interface Description

The package includes the following items. if any items are missing or damaged, please contact us at



Package Contents



WebCam



User Manual

Install the Windows Hello Camera

- a. Place your Windows Hello Camera on the computer monitor

Open the clip and place the Windows Hello camera on the top of the desktop/laptop monitor. The clip can be moved up and down, but not left and right.



- b. Connect the Camera with your computer
Plug the camera USB into the computer USB port

Driver Installation

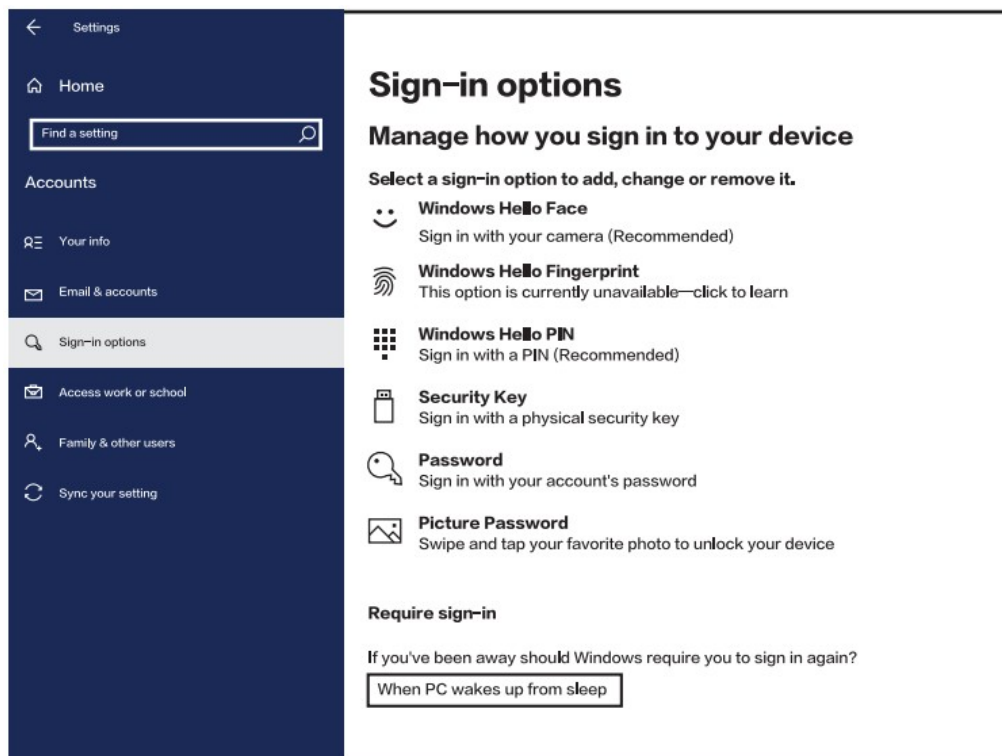
In general, there is no need to install the driver, just plug and play: When you plug this webcam's USB into your computer, the driver will be installed automatically, then you can go directly to the next step of the "Windows Hello Face" setup

However, if the driver cannot be installed automatically, there are two solutions:

1. Restart the computer after the computer is connected to the webcam, and the driver will be automatically installed from windows updates when the network is connected
2. Download the driver from the link (ip3-tech.com/uppic/DX2.rar), then install it on your computer.

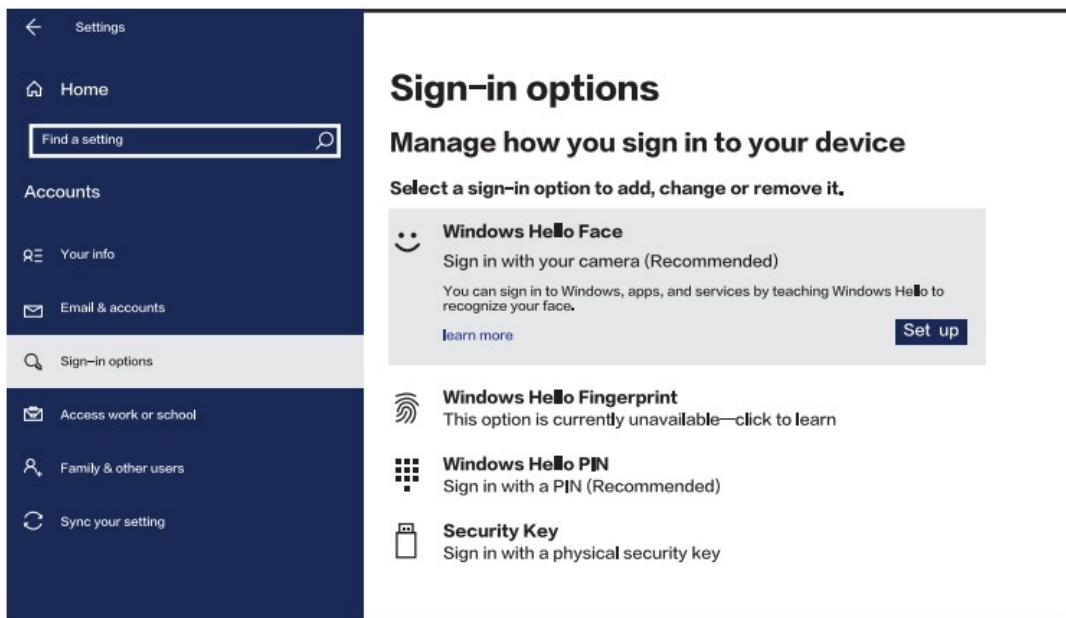
Set up a Windows Hello Face Recognition

1. Go to Settings > Accounts > Sign-in options

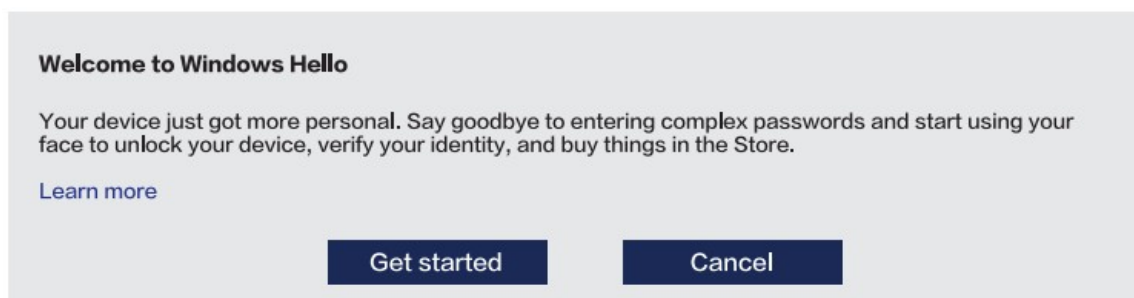


2. Set up a Windows Hello PIN code
 - a. First, set up your account password if you don't have it yet.
 - b. Second, if you have your password already, click on the "Add" button under "Windows Hello Pin" to set up a Pin code before you get permission to use "Windows Hello"
3. Set up "Windows Hello Face"

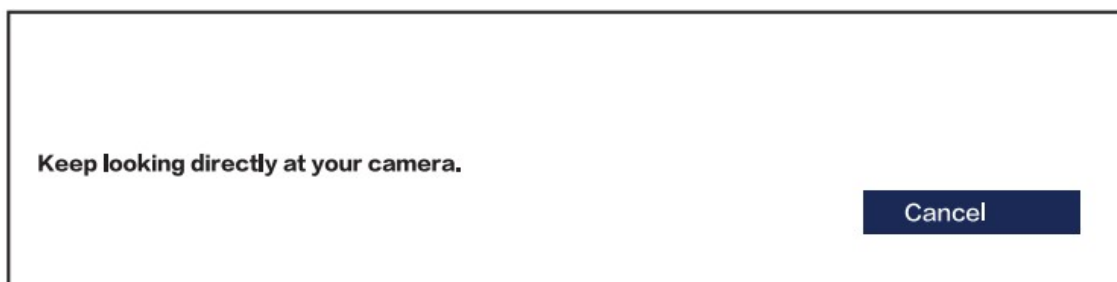
Click on "Set Up" under the option of "Windows Hello Face" to train Windows Hello to recognize your face



4. A “Welcome to Windows Hello” box will pop up. Press the “Get Started” button.



5. Look into the webcam lens to scan your face by following the on-screen instructions.



6. Select “Close” to complete scanning or click “improve Recognition” for additional scans.

If you wear glasses or change your appearance very often or access your laptop in different lighting conditions, we recommend you to choose “improve recognition”

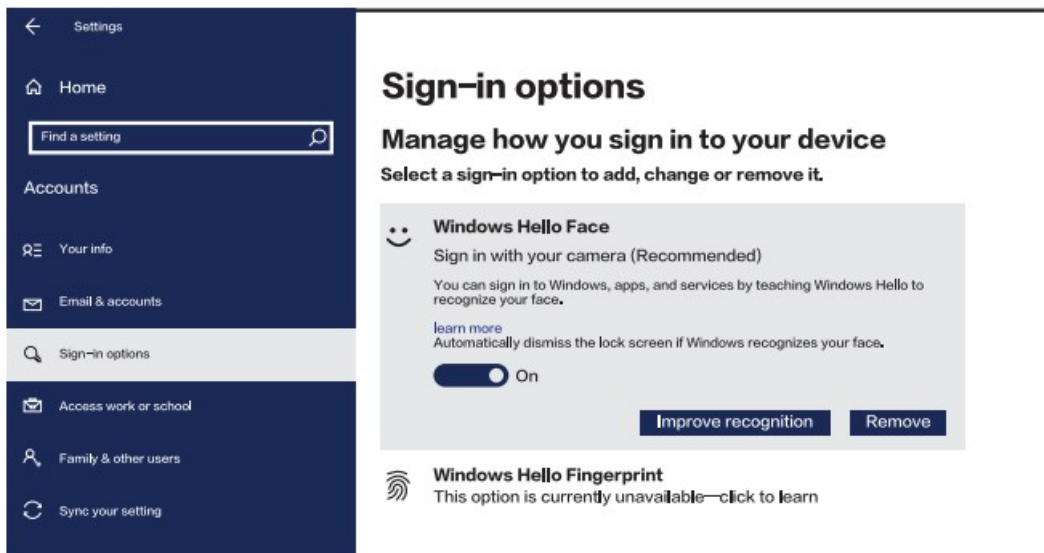
AI set!

Use your face the next time you want to unlock your device.

‘Tip: If you wore glasses while setting up face recognition, select Improve recognition to go through the setup again without them, This will help us recognize you either way,

Improve recognition

7. Now, when you return to “Windows Hello Face”, you can see a switch on the screen. When you turn the switch on, your computer will be automatically unlocked once Windows recognizes your face.



Specifications

wo-we Windows Hello Face Recognition Webcam Specifications		
Infrared Camera	Resolution	340 x 340
	Max Image	Transfer Rate 100fps @ 640×480
RGB Video Camera	Resolution	1280 x 720
	Max Image	Transfer Rate 30fps @ 1920×1080
Infrared LED	Emission Wavelength	Centroid Wavelength 850 nm
Microphone	Digital microphone	Digital Microphone x 2
Audio	Support Sensor	USB2.0 Audio Codec For Digital Microphone Recorder
Interfaces	I/O Port	USB 2.0 (recommended) or USB3.0
Range	Distance	12-40 inches
Dimension	(L x W x H)	5.31 X 0.87 X 0.29 inches
Weight	Ounce	4.2 Ounces
Hardware driver		Network automatic identification or manual installation
OS Platforms	Support Infrared Camera	Windows 10/11
	Support RGB Camera	Windows 8/8.1, 32/64 bit OS
		Windows 7, 32/64 bit OS
Windows Hello	Support	Windows Hello4.x

Remark

1. It is recommended to directly insert the USB of the camera into the built-in USB port of your computer (a USB 3.0 is recommended) to obtain sufficient data bandwidth. Infrared, RGB camera and microphone require full

USB 2.0 data bandwidth to support the use of Windows Hello. (When plugging in a USB hub, docking station or cable extender, it may pop up a 'camera cannot be found' error message unless these devices can provide sufficient data bandwidth for the camera to work properly),

2. Please check if there is 'Biometric Device—Windows Hello Face Software Device' in the device manager (click 'Start' → 'Device Manager'). If you don't have this device, please find the directory (C:\Windows\System32\WinBioPlugins\FaceDriver\Hello-Face.inf.) and click 'HelloFace.inf', then click 'Install'.

The device will be installed and windows hello will run.

3. The default account for all Microsoft operating systems is your 'administrator account! To avoid any permission conflict while installing any accessories including your newly received camera, we strongly recommend that you create a new account name in your computer operating system, then set it up with full 'administrator permission' and use it to properly install your camera (or any other accessories) and be able to use to its fullest all functions of your Windows Hello.

To create a new administrator account, simply follow these steps:

Control Panel -> User Accounts Manage -> another account -> add new User Account in PC settings -> add someone else to this PC -> then follow the pop ups screen and set your administrator permission.

Warranty

We provide a warranty to the Product for any defects in material or workmanship for a period of one (1) year from the original purchase date of the Product. wo-we shall at its discretion, either repair or replace the Product with the equivalent Product free of charge, where the Product is faulty due to defective materials or workmanship. Any defective or additional parts of the Product which are replaced/removed by wo-we in the course of repairing, if any, shall be the property of wo-we.

In no event shall wo-we be responsible or liable for any failure of/damage of the product arising out of or caused by, directly or indirectly, forces beyond its control, including, without limitation, Force Majeure (such as earthquakes, fires, floods, typhoons, lightning strikes, etc), misuse, abuse, negligence, accident, wear and tear, unreasonable use and/or any unauthorized third party(ies) modification or repair of wo-we product or by any other causes unrelated to defective materials or workmanship.

We appreciate your interest in wo-we. Please visit our official website www.wo-we.com to learn more about our company. If you have any question on this product, please feel free to contact us at service@wo-we.com.

CAN ICES-003(A)/NMB-003(A)



This device complies with Part 15 of the FCC Rules.

Operation is subject to the following two conditions:

1. this device may not cause harmful interference, and
2. this device must accept any interference received, including interference that may cause undesired operation.

EU Conformity Statement



This product and – if applicable – the supplied accessories too are marked with "CE" and comply therefore with the applicable harmonized European standards listed under the EMC Directive 2014/30/ EU, the LVD Directive 2014/35/EU, the RoHS Directive 2011/65/EU, Wi-Fi device: the RE Directive 2014/53/ EU.




2012/19/EU (WEEE directive): Products marked with this symbol cannot be disposed of as unsorted municipal waste in the European Union. For proper recycling, return this product to your local supplier upon the purchase of equivalent new equipment, or dispose of it at designated collection points. For more information see: <http://www.recyclethis.info>



Manufacturer: Shanghai Hongnian Industrial Co.,
Address: 5542, No.32 Xinxin Road, Chedun Town, Songjiang District,
Shanghai, China, 201611.
Website: www.wo-we.com
©2023wo-we. All Rights Reserved

Documents / Resources

	<p>Wo-We HU-IRC01 Windows Hello Face Recognition WEBCAM [pdf] User Manual HU-IRC01 Windows Hello Face Recognition WEBCAM, HU-IRC01, Windows Hello Face Recognition WEBCAM, Hello Face Recognition WEBCAM, Face Recognition WEBCAM, Recognition WEBCAM, WEBCAM</p>
---	--

References

- [User Manual](#)