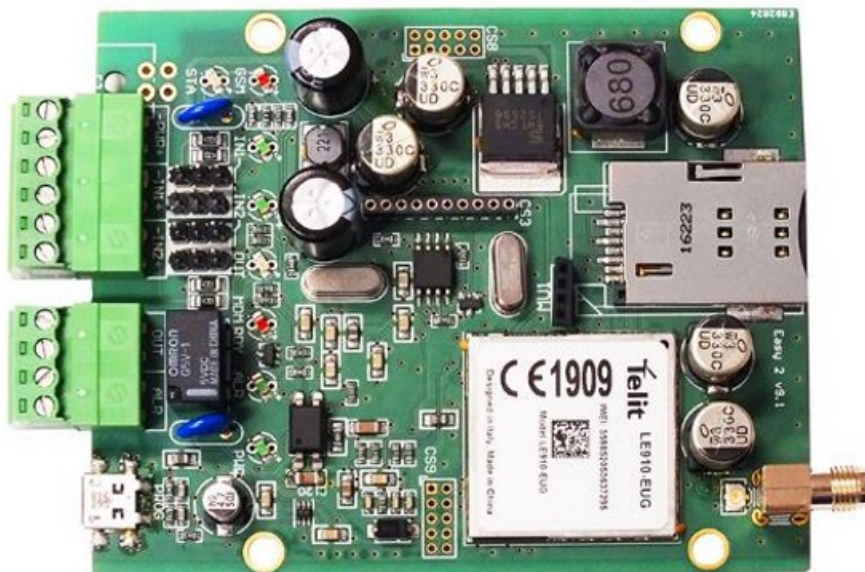




WM SYSTEMS M2M Easy 2 Security Communicator System Installation Guide

[Home](#) » [WM SYSTEMS](#) » WM SYSTEMS M2M Easy 2 Security Communicator System Installation Guide 



M2M Easy 2 Security Communicator®
– Quick Installation Guide (for PCB v9.17, v9.27)

Contents

1 CONNECTORS

2 POWER SUPPLY AND ENVIRONMENTAL CONDITIONS

3 INSTALLATION STEPS

4 OPERATION MODES

5 CONFIGURATION THROUGH SERIAL CONNECTION

6 CONFIGURATION BY SMS COMMANDS

7 SMS MESSAGE (COMMAND SEQUENCE)

EXAMPLES:

8 Documents / Resources

8.1 References

CONNECTORS

1. SIM card slot (2FF type, push-insert)
2. Antenna connector (SMA-50 Ohm, female)
3. PWR +/-: Power cable connector (8-24VDC, 1A), battery connection
4. IN1, IN2 +/-: input cable connectors (for sensors, sabotage detection)
5. Jumpers for choosing the input line modes (for IN1, IN2):
 - galvanically independent voltage inputs
 - contact inputs (detecting wire cut (by using a 10kΩ EOL resistor), or short)
6. Status LEDs
7. OUT: relay output (for control: gate opening or siren/bark)
8. LR: Alarm (TIP RING) line for connecting alarm center (emulated analog phone line)
9. PROG: micro-USB connector (for configuration, software refresh)
10. Holes for fastening the PCB board (into alarm safety box, etc.)
11. Expansion board connector (for IO-expander)

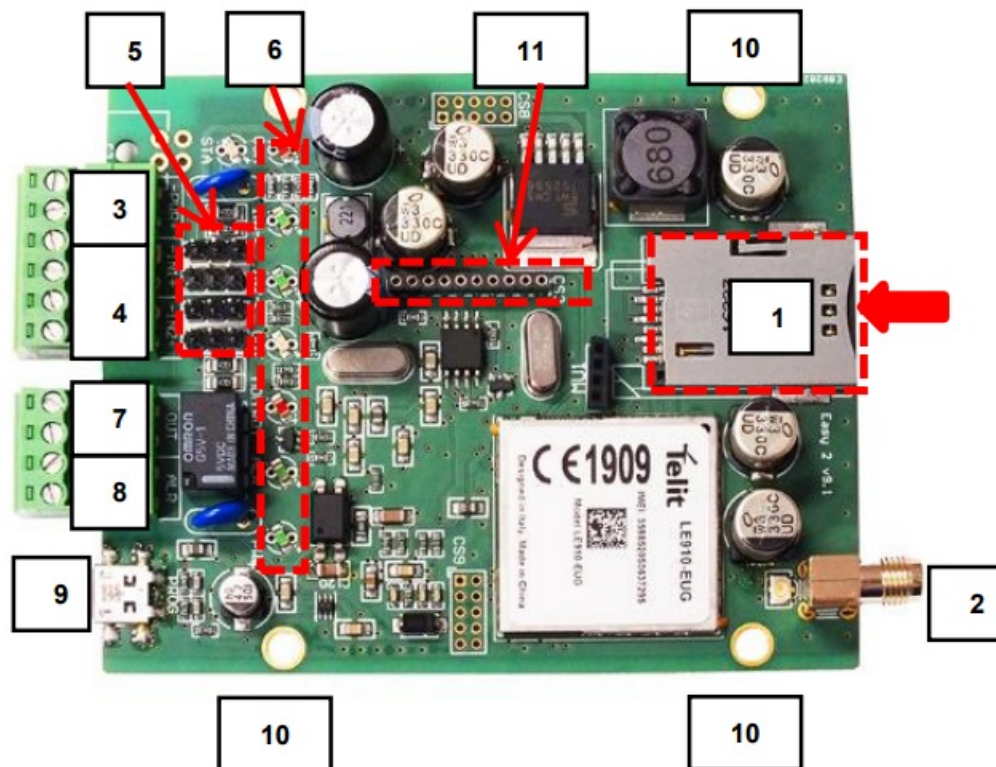
Input line operation mode selection (by jumpers [5]):

- Contact input mode (for cable cut / short detection or sensors)
 - Related jumper pairs (closer 2-pins, beside the input connector)
 - The ground point of the input lines (-) are common
 - The connection of input lines (independent polarity)
- Voltage
 - Related jumper pairs (closer 2-pins at the input LEDs)
 - Galvanical independent, individual input lines
 - Make attention to the polarity when wiring!

POWER SUPPLY AND ENVIRONMENTAL CONDITIONS

- Power supply: 8-24 VDC
- Input signal: high level 2-24V (IO-expander: 2-32V), low level: 0-1V
- Current in active state: 0.33mA
- Switchable voltage on output: 2A / 120VAC; 1A / 24VDC

- Protection: IP21
- Operation temperature between -40°C and +70°C, storage between -40°C and +80°C, with 0-95% humidity
- Size: 96 x 77 x 22mm, weight: 160 gr
- Fastening / mount: it may be fixed by 4 screws / plastic spacers through the 4 holes on the PCB



INSTALLATION STEPS

- Step 1: Place the SIM into the SIM tray [1] (the chip side looks down and the cutted edge of the SIM is facing into the PCB side).
- Step 2: Push the SIM until it will be fixed.
- Step 3: Wire and connect the input line(s) (use them for sensors or sabotage detection) in voltage/contact mode – by wiring the cables to the IN1, IN2 [4].
Choose the operation mode of the input line, select the jumper position [5] (voltage/contact). Connect the output (for switching external device/gate opening system) to the OUT [7].
- Step 4: If you want to connect an alarm center to our safety transmitter, then connect TIP RING of the alarm center to ALR [8] port.
- Step 5: Connect the antenna to the SMA connector [2].
- Step 5: In the communication menu of the alarm center, enter at least 1 digit to remote surveillance phone number. If you wish to use M2M Easy 2 in GSM mode as well (as primary or secondary route), enter the GSM phone nr. of the dispatcher service into the alarm center.
- Step 6: Connect the USB-microUSB cable to the PROG titled port [9], and perform the configuration for the EasyTerm application according to the related part of the User Guide.
- Step 7: Download the EasyTerm from this link (Windows® 7/8/10/11 compatible):
https://www.m2mserver.com/m2m-downloads/EasyTerm_v1_3_5__EN.zip
- Step 8: Download the latest device firmware for the software refresh: https://www.m2mserver.com/m2m-downloads/EASY2S_V21R09E05RC08.bin

- Step 9: Extract the EasyTerm ZIP file, and execute the EasyTerm_v1_3_5.exe software. Follow the steps of the Installation manual Chapter 4, 5.
- Step 10: Connect the 12V/24V DC power cable of the alarm center's power wires to the PWR titled port [3]. (Pay close attention to wire polarity! The left side wire of the PWR input is the positive (+), the right is the negative (-). You can use a 124V DC 1A a power adapter too.)
- Step 11: Then the device will be under voltage, and it will be turning on and starting its operation. The green PWR LED will be continuously lighting. Any further operation LED status is listed hereby.

IMPORTANT! If there is no available PC, you can setup the device parameters with SMS text messages (by using compatible commands).

LED	Function	Meaning	LED colour	Behaviour
GSM	Cellular network signal strength	Signaling the available signal strength – more flashes = better signal strength	red	flashing
STA	Modem status	In case of normal operation it signals the mobile network communication status	yellow	flashing/light
IN1	Input nr.1	Signals the status of the #1 input line (I1INV or IDELAY parameters are applied) The LED is lighting if the input wires are closed (active)	green	lights
IN2	Input nr.2	Signals the status of the #2 input line (I2INV or IDELAY parameters are applied) The LED is lighting if the input wires are closed (active)	green	lights
OUT	Output relay	The LED is lighting when the relay is closed, not lighting: when the relay is opened	yellow	lights
MDM RDY	Modem operation	Modem status. Flashes intermittently if the modem operates and accessible.	red	flashing
ALR	Alarm center	Status of the alarm center line (Tip-Ring) Speaker on: not lighting, Speaker off: no alarm center	green	flashing
PWR	Power	Signals the presence of the processor power supply	green	lights

STA LED – has three modes:

- lighting continuously: the last GPRS signaling was successful,
- turned off: GSM operation mode, no error
- 'x' number of flashes at a 3 second interval: error code (1 flash: Module failure, 2 flashing: SIM card failure, 3 flashing: PIN authentication failure, 4 flashing: Device cannot login to the GSM network, 5 flashing: Device cannot login to the cellular network, 6 flashing: Connected to the cellular network, but cannot login to the server)

GSM LED: The numbers of the LED flashing signals the current signal strength of the cellular network (more flashes: better signal reception). There are 10 seconds between the flashings. One flash takes 50 msec, then half a second breaking continues. Flashing: 0: Fault, 1: Weak, 2-3: Average, 4-5: Good, 6-7: Excellent

IN1, IN2 LED: When the input is active (if two pair of wires are closed; or in power mode at 5-24VDC voltage presence) the related INx LED will lighting.

OUT LED: Lighting when the output is active (the relay pair of wires are closed). It shows the status of the primer-side of the relay.

MODEM RDY LED: Module operation LED, which blinks quickly at the initialization of the Easy2 (ca. twice per seconds). When the modem is already accessible and operating and has an active communication on the GSM

network, then it will flashing with less frequented.

OPERATION MODES

The device is capable of configuring and using for the following operating modes and tasks:

1. GSM transmitter (pre-configured to this mode, by default): the alarm system is connected to the TIP-RING input, the incoming Contact ID codes are forwarding and transmitting with the signals through the GSM network to the remote dispatching centre.
2. Signaling to an Enigma IP receiver / SIMS Could® : the alarm system is connected to the TIP-RING input, the incoming Contact ID codes are forwarding and transmitting with the signals through the cellular network with Enigma protocol to an Enigma IP receiver or into the SIMS ® software.
3. Transmitting through cellular network to the dispatching centre: the alarm system is connected to the TIP-RING input, sabotage switch is connected to the input for monitoring, incoming signals are converted to Contact ID codes and transmitting through the cellular network to the IP address of remote centre.
4. Standalone alarm system – with SMS notification only: sensors or sabotage detection are connected to the input lines (2 inputs, with the IO-expansion max. 8 inputs); siren can be connected to the output. The signals are transmitted through the cellular network to a server IP address.
5. Input monitoring, gate opening: sensors or sabotage detection are connected to the two voltage/contact inputs (with the IO-expansion max. 8 inputs). Input short/wire cut can be detected also on the inputs. The relay output(s) is remotely controlled (the output nr.#1. is for gate opening, further outputs (nr. 2-4) are presented for switching external devices). The device uses the cellular network in this mode for remote control. The GSM network is used for SMS notification and ringing. The signaling through cellular network (to an IP address) is still there as an option.

CONFIGURATION THROUGH SERIAL CONNECTION

The device is shipped with uploaded firmware and factory configuration. By default – without any configuration changes – the Easy2S is operating as a GSM transmitter (the signals of the connected alarm system (on Tip-Ring) will be transmitted through GSM network – with Contact ID codes – to the dispatcher center).

Further configuration needs can be configured with the EasyTerm® software. Connect the device's micro-USB port by a cable to your computer's USB port.

CONFIGURATION BY SMS COMMANDS

– You can send more commands in the same SMS text message. Query commands cannot be mixed with control commands!

– Max. 158 characters can be used in one SMS message. Messages must contain english capital alphabetical letters only (without special chars) or numbers.

– The order and divide of the commands is possible with comma sign without a space character. The parameter value (after the = character) can be empty.

– In every SMS message (!) you have to use the password parameter (PW) at the first command position.

– You have to use the RESET command in the last SMS parameter message, at last the position – as PW=ABCD,,RESET

– The new configuration values become active only after reboot. After – a couple of minutes – you have sent the last parametrizing message you will receive a response from the device that how many parameters were processed (e.g. „Settings OK!“ text message response)

– The default password is ABCD, which can be changed (PWNEW param.) which can be max. 16 chars.

– Example: PW=ABCD,APN=TELEMATICS.NET,SERVER1=1.1.1.1,RESET >>> Text message response: Settings OK!

MAIN PARAMETER COMMANDS	Description
PW	Connection / authentication password (default: ABCD)
PWNEW	Password change, adding the new password for connection authentication
APN	The name of the APN network required for cellular network connection, which is given by the operator providing the SIM card
SERVER1	The primary fixed IP address of the remote surveillance (dispatcher center) for receiving the transmitting signals
PORT1	The port number for the primary fixed IP address of the dispatcher center, where the signals will be received (default=9999)
GPRSEN	Enabling cellular network communication. Values: 1=enable, 0=disable (default=0)
SWPROTO	Which protocol is used for signaling. Values: 2=Enigma (standard Contact ID protocol), 1=M2M (default=2) (M2M means the modified Contact ID protocol, which can only be used with the following IP receivers (as Enigma II®, Enigma IP2® receivers) remote dispatcher software (as AlarmSys® and SIMS® software)).
ACCOUNT	The client identification code, object number to be used for own signals, signals (of the inputs) which is sent by the device (default=0001). It is recommended to set up the same object number as set in the alarm center!
SFUNCT	You can choose that the primary or secondary server IP address will be the first in the signaling sequence
DTMFTIME	DTMF pause between the TIP-RING Contact ID signals
IPPROTO	TCP or UDP communication protocol according to compatibility needs
LFGSMREQ	The frequency of the GSM life signal – value in seconds (default=60)
LFFREQ	The frequency of the cellular network life signal – value in seconds (default=300)

QUERY COMMANDS	Response content
INFDEV (or) DEVSTAT	It will response an SMS report with the current status of the Easy 2: account nr. (customer ID), signal strength, software version, hardware ID, device IMEI, SIM ICC, battery level, IP address (ACCOUNT, SQ, SWVER, HWID, IMEI, SIMICC, VBATT, IP)
INFIO	Current status of the input lines and the output line. Contains: ACCOUNT, SQ, current status of the inputs / output lines
INFTEL	Configured voice/SMS notification settings, phone numbers and notification (SMS text message) order sequence, voice call (ringing) order sequence will be response. Contains: ACCOUNT, SQ, TEL1, TEL2, TEL3, TEL4, I1S, I2S, I1V, I2V
INFSMS	Input SMS notification settings. Contains: ACCOUNT, SQ, I1ON, I1OFF, I2ON, I2OFF
INFIP	Server connection settings. Contains: ACCOUNT, SQ, IMEI, IP, SERVER1, PORT1, SWPROTO

SMS MESSAGE (COMMAND SEQUENCE) EXAMPLES:

- GSM signaling/transmitting:

PW=ABCD,GPRSEN=0,SYS1=1,ACCOUNT=1130,LFGSMFREQ=60,DTMFTIME=60,RESET

- Signaling through cellular network to an IP-receiver:

PW=ABCD,GPRSEN=1,SFUNCT=1,ACCOUNT=1130,LFFREQ=300,APN=NET,SERVER1=89.133.189.139,
PORT1=9999,IPPROTO=UDP,RESET



For checking the further available parameters, read the M2M Easy2S Security Communicator Installation Guide which can be downloaded from our website: <https://m2mserver.com/en/product/wireless-safety-transmitter/>



This product is marked with the CE symbol according to the European regulations.



Documents / Resources



[WM SYSTEMS M2M Easy 2 Security Communicator System](#) [pdf] Installation Guide
M2M Easy 2 Security Communicator System, M2M, Easy 2 Security Communicator System, Security Communicator System, Communicator System, System

References

- ^{M2M} [WIRELESS SAFETY TRANSMITTER - WM Systems LLC - M2M / IoT Communication Solutions](#)
- ^{M2M} m2mserver.com/m2m-downloads/EASY2S_V21R09E05RC08.bin
- [User Manual](#)

[Manuals+](#), [Privacy Policy](#)

This website is an independent publication and is neither affiliated with nor endorsed by any of the trademark owners. The "Bluetooth®" word mark and logos are registered trademarks owned by Bluetooth SIG, Inc. The "Wi-Fi®" word mark and logos are registered trademarks owned by the Wi-Fi Alliance. Any use of these marks on this website does not imply any affiliation with or endorsement.