



wizarpos Ticket Validator Payment Terminal User Manual

[Home](#) » [wizarpos](#) » wizarpos Ticket Validator Payment Terminal User Manual 

Contents

- [1 wizarpos Ticket Validator Payment Terminal](#)
- [2 Product Information](#)
- [3 Product Usage Instructions](#)
- [4 Packing List](#)
- [5 Top View](#)
- [6 Bottom View](#)
- [7 Interface Definition of Aviation Plug](#)
- [8 Mounting bracket](#)
- [9 Back View](#)
- [10 Quick Guide](#)
- [11 Specification](#)
- [12 Safety Precaution for Use](#)
- [13 Product warranty policy](#)
- [14 Declaration of Conformity](#)
- [15 Specifications](#)
- [16 FCC Statement](#)
- [17 Documents / Resources](#)
 - [17.1 References](#)



wizarpos Ticket Validator Payment Terminal



Product Information

- Product Name: Ticket Validator
- Brand: WizarPOS
- Software Platform: Secure Android, Based on Android 7.1
- Processor: Qualcomm + Secure Chip
- Memory: 1GB RAM, 8GB Flash or 2GB RAM, 16GB Flash
- Display: 4 multi-touch color LCD panel (480 x 800 mm)
- Scanner: 1D & 2D barcode scanning
- Security Certification: PCI PTS 5.x
- Contactless Card: ISO1443 Type A & B, Mifare, Contactless EMV Level 1 Mastercard Paypass, Paywave, expresspay and D-PAS.
- Communication: GSM, WCDMA, FDD-LTE, TDD-LTE, Wi-Fi, BT4.1, Etherhet / POE, RS232/ RS485
- Audio: Built-in microphone, speaker
- USB: USB Type-A Host, USB 2.0 HS compliant
- Power: 24V DC in / POE power supply
- Dimensions: 212 x 95 x 45.5 mm (83.5 x 37.4 x 17.9 inches)
- Weight: 205 g (0.45 lb)

Product Usage Instructions

1. Before use:

- Please check if the configuration is consistent with the requirements.
- Please check whether the accessories are complete.

2. Power on and off:

- This product supports 12-24V DC power supply or PoE power supply. The DC power supply can be powered from DC Jack or aviation plug (RS485 configuration only).
- After the product is powered on, it will auto-boot and always on.
- When needs to reboot the device, please cut off the power and then re-power the device.

- To use the backup battery, please turn on the backup battery switch. The backup battery is automatically charged when the device is connected to DC/PoE power supply.

3. System setup:

Click the setup icon on the desktop to set up the system. You can set up the POS as needed.

4. Payment operation:

- Please follow the instructions of your payment App provider.
- Tap the contactless card close to the screen to read the card.

Note: All features and specifications are subject to change without notice. Contact WizarPOS website for more details.

Safety Precaution for Use:

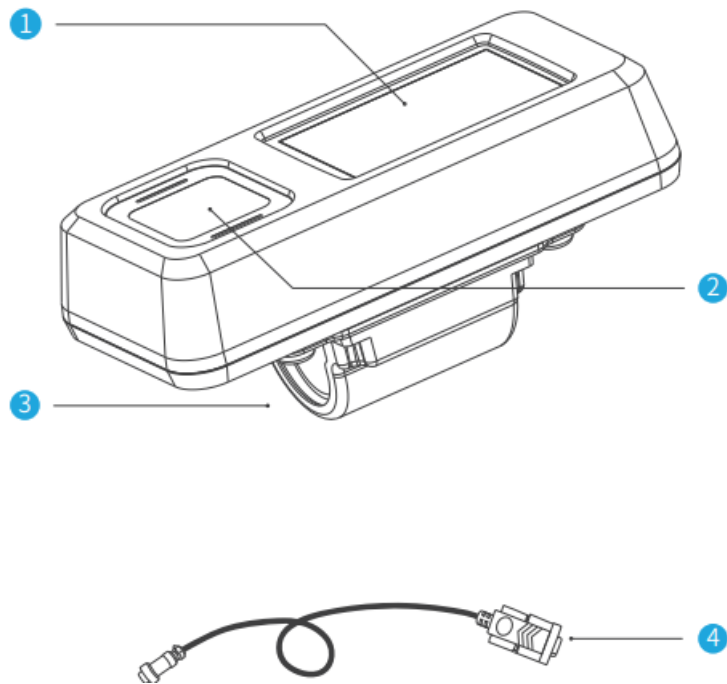
- Operating Temperature: 0~45°C (32 to 113°F)
- Operating Humidity: 10~93% (No condensation)
- Storage Temperature: -20~60°C (-4 to 140°F)
- Storage Humidity: 10~93% (No condensation)

Attention:

- Do NOT refit the POS, that is illegal to privately refit financial POS.
- User shall bear the risks of installation and usage of third-party APPs.
- The system will become slow if too many APPs are installed.
- Please use a dry and clean cloth to clean the POS. Do NOT use chemicals.
- Do NOT expose the POS under heavy sunlight for a long time.
- Do NOT use sharp and hard objects to touch the screen.
- Do NOT throw the POS, charger, or battery as common household garbage.

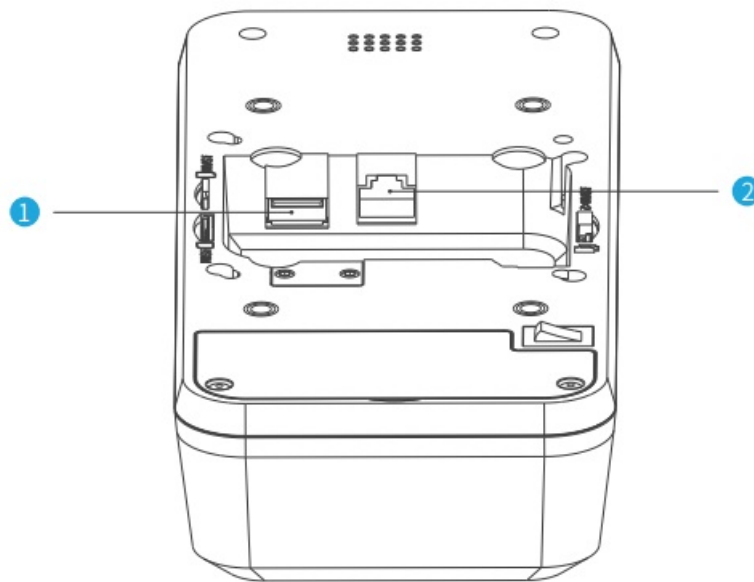
For more information, visit the [WizarPOS website](#).

Packing List



- 1. 4 LED Indicators
- 2. Scanner
- 3. Mounting bracket
- 4. RS232 to DB9 converter cable (optional for RS232 connection)

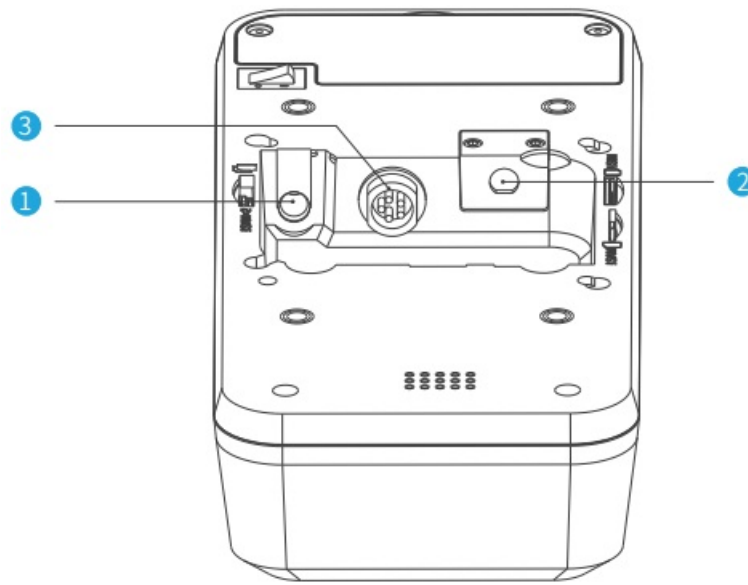
Top View



Top

- 1. USB Type-A Host
- 2. PoE/Ethernet

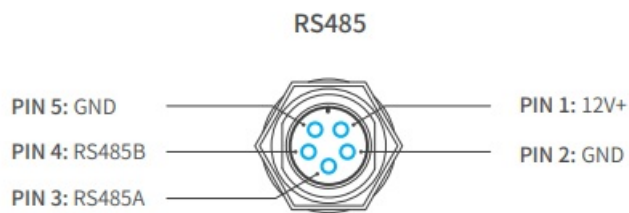
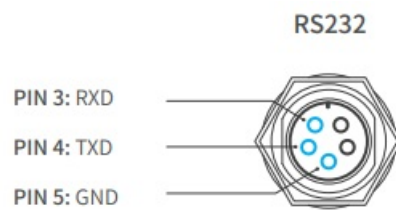
Bottom View



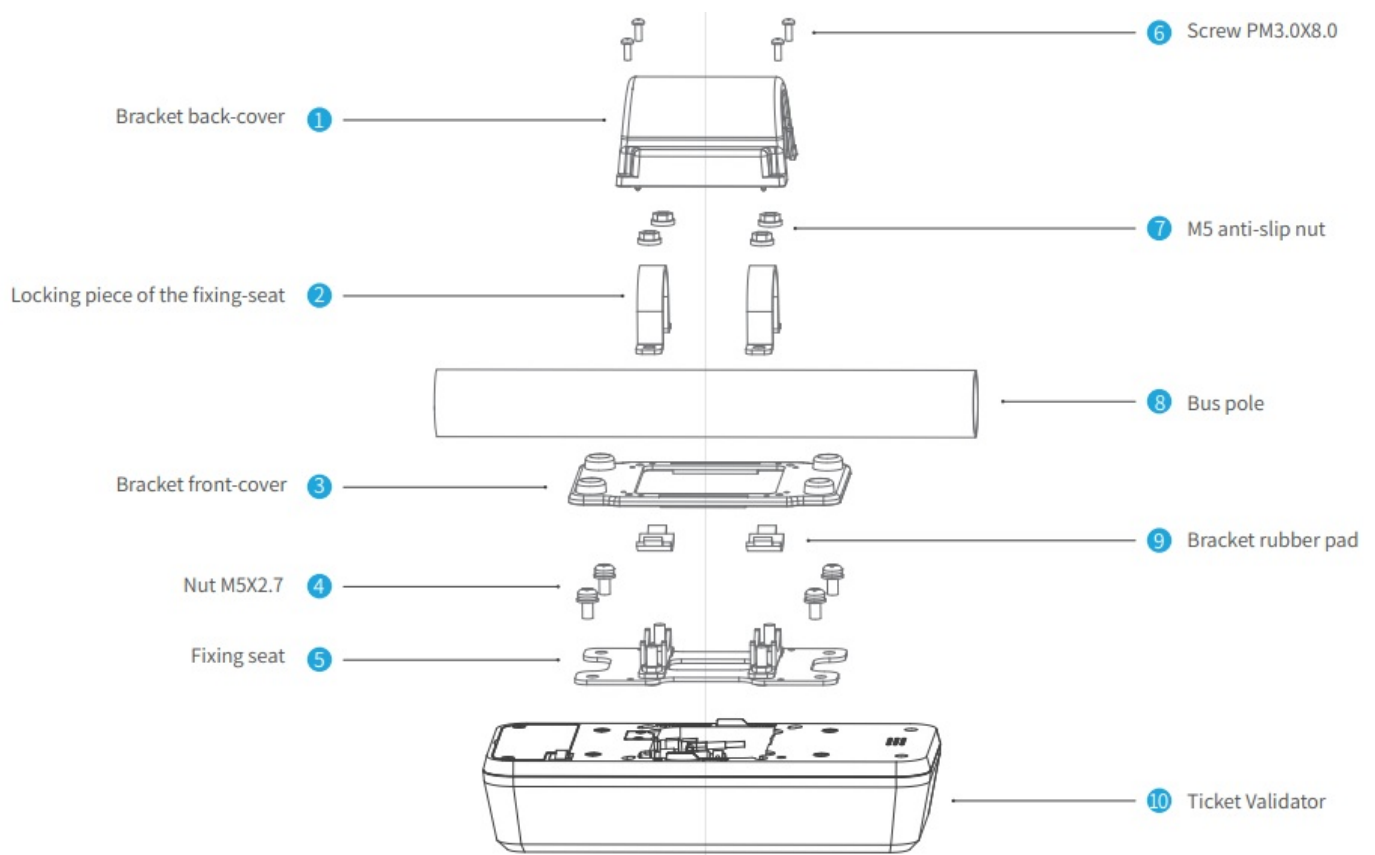
Bottom

1. DC Jack
2. External antenna (Optional)
3. Aviation plug

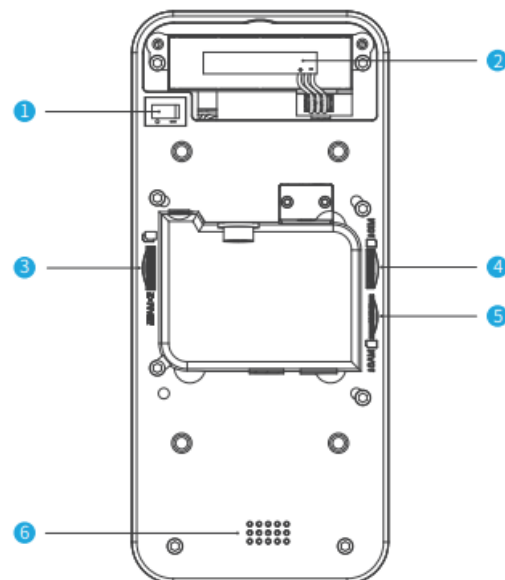
Interface Definition of Aviation Plug



Mounting bracket



Back View



1. Backup battery switch (optional)
2. Backup battery (optional)
3. SAM X 2 (Optional)
4. SIM
5. SAM
6. Speaker

Quick Guide

1. Before use

- a) Please check if the configuration is consistent with the requirements;
- b) Please check whether the accessories are complete

2. Power on and off

- a) This product supports 12-24V DC power supply or PoE power supply, and the DC power supply can be powered from DC Jack or aviation plug (RS485 configuration only).
- b) After the product is powered on, it will auto-boot and always on.
- c) When needs to reboot the device, please cut off the power and then re-power the device.
- d) To use the backup battery, please turn on the backup battery switch, and the backup battery is automatically charged when device is connected to DC/PoE power supply.

3. System setup

Click the“ setup” icon on the desktop to setup the system. You can set up the POS as needed.

4. Payment operation

- a) Please follow the instructions of your payment App provider.
- b) Tap the contactless card close to the screen to read the card.

Specification

Specification	Detailed Description
Software Platform	Secure Android, Based on Android 7.1
Processor	Qualcomm + Secure Chip
Memory	1GB RAM, 8GB Flash or 2GB RAM ,16GB Flash
Display	4" multi-touch color LCD panel (480 x 800 mm)
Scanner	1D & 2D barcode scanning
Security Certification	PCI PTS 5.x
Contactless Card	ISO1443 Type A & B, Mifare, Contactless EMV Level 1 Mastercard Paypass, Paywave, expresspay and D-PAS.
Communication	GSM, WCDMA, FDD-LTE, TDD-LTE, Wi-Fi, BT4.1, Etherhet / POE, RS232/ RS485
Audio	Built-in microphone, speaker
USB	USB Type-A Host, USB 2.0 HS compliant
Power	24V DC in / POE power supply
Dimensions	212 x 95 x 45.5 mm (83.5 x 37.4 x 17.9 inches)
Weight	205 g (0.45 lb)

All features and specifications are subject to change without notice.
Contact wizarPOS website for more details.

www.wizarpos.com

Safety Precaution for Use

Environment



Operating Temperature
0°C~45°C (32°F to 113°F)



Operating Humidity
10%~93% No condensation



Storage Temperature
-20°C~60°C (-4°F to 140°F)



Storage Humidity
10%~93% No condensation

Attention

- Do NOT refit the POS, that is illegal to privately refit financial POS.
- User shall bear the risks of installation and usage of third-party APPs.
- The system will become slow if too many apps installed.
- Please use dry and clean cloth to clean the POS, Do NOT use chemical.
- Do NOT expose the POS under heavy sunlight for long time.
- Do NOT use sharp and hard objects to touch the screen.
- Do NOT throw the POS, charger or battery as common household garbage.
- Please support recycling according to local environmental rules.
- Please use the original battery and charger, otherwise, that may cause product damage or personal injury.
- Do NOT put the battery into fire, otherwise, it will cause an explosion.
- The battery is forbidden to immerse, the battery can not be used again after entering the water.
- Do NOT short-circuit battery, otherwise, that will cause personal injury or battery permanent damage.
- If the battery is deformed or in abnormal heat, stop using it and replace it with new battery.
- Replacing with the wrong model battery may cause an explosion.

Product warranty policy

WizarPOS provide after-sales service according to relative laws.
Please read the following warranty terms.

1. Warranty period: one year for POS.
2. In warranty period, WizarPOS provide free repair/replace service, if the product has non artificial product failures.
3. Welcome to contact WizarPOS or the its authorized distributors for supports.
4. Please show product warranty card with true information.

Warranty limitation clause

Situations due to following reasons are not covered under warranty policies. A charge service will be applied.

1. The POS is maintained/repared by unauthorized party without WizarPOS permission.
2. The OS of POS is unauthorized changed by user.
3. The trouble is caused by the third party APP which is installed by user.
4. Damage due to improper use which like falling, squeeze, hit, soaking, burning.
5. No warranty card, or cannot provide true information in card.
6. Expiry of guarantee period.
7. Other conditions which is forbidden by laws.

List of harmful substances in the product and logo of environment-friendly use period.

Part	Harmful substances					
	Pb	Hg	Cd	Cr(VI)	PBB	PBDE
LCD and TP Module	○	○	○	○	○	○
Housing and keypad	○	○	○	○	○	○
c PCBA and s omponent	×	○	○	○	○	○
Accessories	×	○	○	○	○	○
<p>This table is made according to requirement of SJ/T 11364.</p> <p>○ means the harmful substance concentration in the parts is</p> <p>× under the limits in GB/T 26572. oncentration of one or more</p> <p>means the harmful substance c</p> <p>homogeneous materials in the parts is exceeded the limits in GB/T 26572.</p> <p>NOTE: Parts which marked × are compliant to China RoHS Regulation and EU RoHS Directive.</p>						
		<p>This is environment-friendly use period logo of the product. This logo means that in this period the product will not leak harmful substances i n normal usage.</p>				

Trouble	Trouble shooting
Cannot connect the mobile n etwork	<ul style="list-style-type: none"> ◆ Check whether the function of“data”is open. ◆ Check whether the APN is correct. ◆ Check whether the data service of SIM is active.
No response	<ul style="list-style-type: none"> ◆ Restart the APP or operation system.
Operation very slow	<ul style="list-style-type: none"> ◆ Please stop active APPs which are not necessary.

Repair date	Repair content

RED 2014/53/EU

Declaration of Conformity

Hereby, {WizarPos International Co., Ltd. } declares that this {Smart POS} product is in compliance with essential requirements and other relevant provisions of Directive 2014/53/EU.

Specifications

Hardware Version: 1.0.0

Software Version: 1.0.0

BT(BR+EDR) Frequency Range: 2402-2480MHz(Max power: 0.60dBm)

BLE Frequency Range: 2402-2480MHz(Max power: 0.32dBm)

2.4G WIFI Frequency Range: 2412-2472MHz(Max power: 15.58dBm)

GSM 900 Frequency Range: 880MHz~915MHz(Max power: 32.92dBm)

DCS 1800 Frequency Range: 1710MHz~1785MHz(Max power: 29.68dBm)

WCDMA Band I Frequency Range: 1920MHz~1980MHz(Max power: 23.57dBm)

WCDMA Band VIII Frequency Range: 880MHz~915MHz(Max power: 23.32dBm)

LTE FDD Band:

E-UTRA Band 1 Frequency Range: 1920MHz~1980MHz(Max power: 22.35dBm)

E-UTRA Band 3 Frequency Range: 1710MHz~1785MHz(Max power: 22.84dBm)

E-UTRA Band 7 Frequency Range: 2500MHz~2570MHz(Max power: 22.12dBm)

E-UTRA Band 8 Frequency Range: 880MHz~915MHz(Max power: 22.25dBm)

E-UTRA Band 38 Frequency Range: 2570MHz~2620MHz(Max power: 22.31dBm)

E-UTRA Band 40 Frequency Range: 2300MHz~2400MHz(Max power: 22.55dBm)

NFC Frequency Range: 13.56MHz

GPS Receiver Frequency Range: 1575.42MHz

SAR Max. Values: 1.045W/kg (10g) for Body

RF distance is 0mm.

Manufacturer WizarPos International Co., Ltd.

Address 10th floor, No.509, Wuning road, Shanghai, China

Importer XXXXX

Address XXXXX

FCC Statement

Smart POS has been tested and found to comply with the limits for a Class B digital device, pursuant to part 15 of the FCC Rules. These limits are designed to provide reasonable protection against harmful interference in a residential installation. This equipment generates, uses and can radiate radio frequency energy and, if not installed and used in accordance with the instructions, may cause harmful interference to radio communications. However, there is no guarantee that interference will not occur in a particular installation. If this equipment does cause harmful interference to radio or television reception, which can be determined by turning the equipment off and on, the user is encouraged to try to correct the interference by one or more of the following measures:

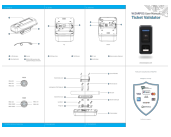
- Reorient or relocate the receiving antenna.
- Increase the separation between the equipment and receiver.
- Connect the equipment into an outlet on a circuit different from that to which the receiver is connected.
- Consult the dealer or an experienced radio/TV technician for help.

Caution: Any changes or modifications to this device not explicitly approved by the manufacturer could void your authority to operate this equipment.

This device complies with part 15 of the FCC Rules. Operation is subject to the following two conditions:

This device may not cause harmful interference, and (2) this device must accept any interference received, including interference that may cause undesired operation.

Documents / Resources

	wizarpos Ticket Validator Payment Terminal [pdf] User Manual 2AG97-WIZARPOSQ3B, 2AG97WIZARPOSQ3B, wizarposq3b, Ticket Validator Payment Terminal, Validator Payment Terminal, Payment Terminal, Terminal
---	---

References

- [WizarPOS | the trailblazer in Android POS & Payment Solutions](#)