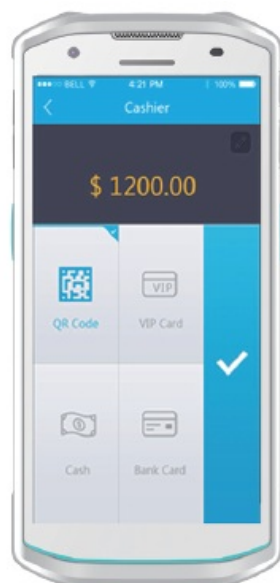


Contents [[hide](#)]

- [1 WizarPOS Q3 PDA Android Mobile POS](#)
- [2 Packing List](#)
- [3 Operating instructions](#)
- [4 Trouble Shooting](#)
- [5 FCC Statements](#)
- [6 Safety Warning](#)
- [7 Environment](#)
- [8 Documents / Resources](#)
 - [8.1 References](#)



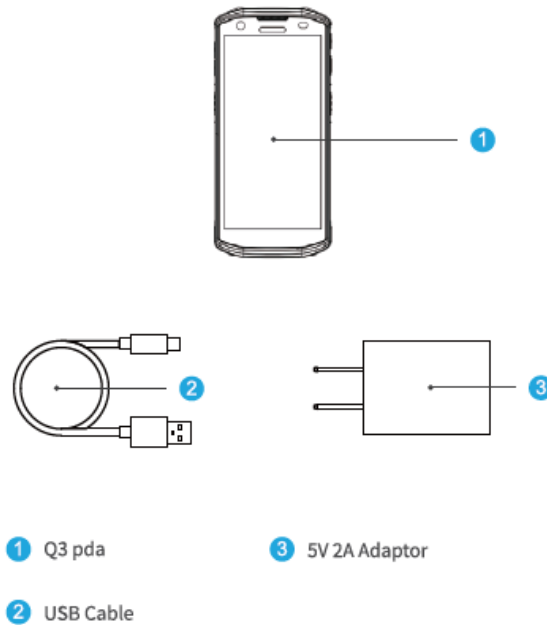
WizarPOS Q3 PDA Android Mobile POS



Packing List

- Thank you for choosing our product!
- We sincerely hope that wizarPOS will enable smart payments and enhance the convenience of your daily business.
- Before powering up the device, please check the terminal and accessories as follows:

1.



Please contact your product provider if anything is missing.

Q3pda

2. SV 2AAdaptor

3. USBCable

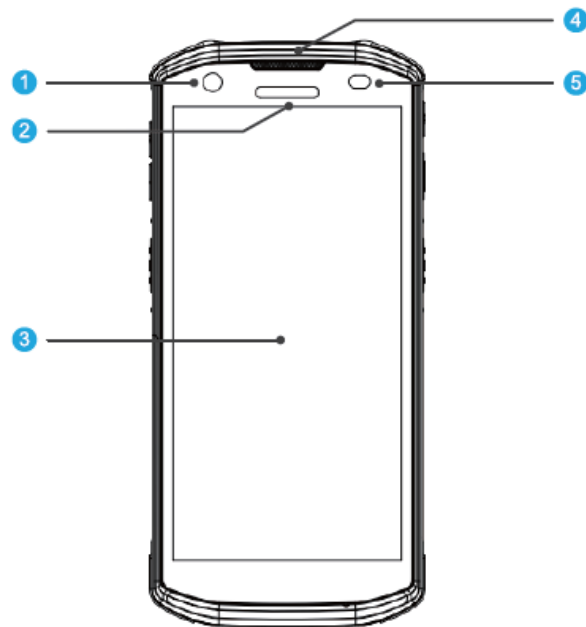
Front View

1. Frmt Carrera

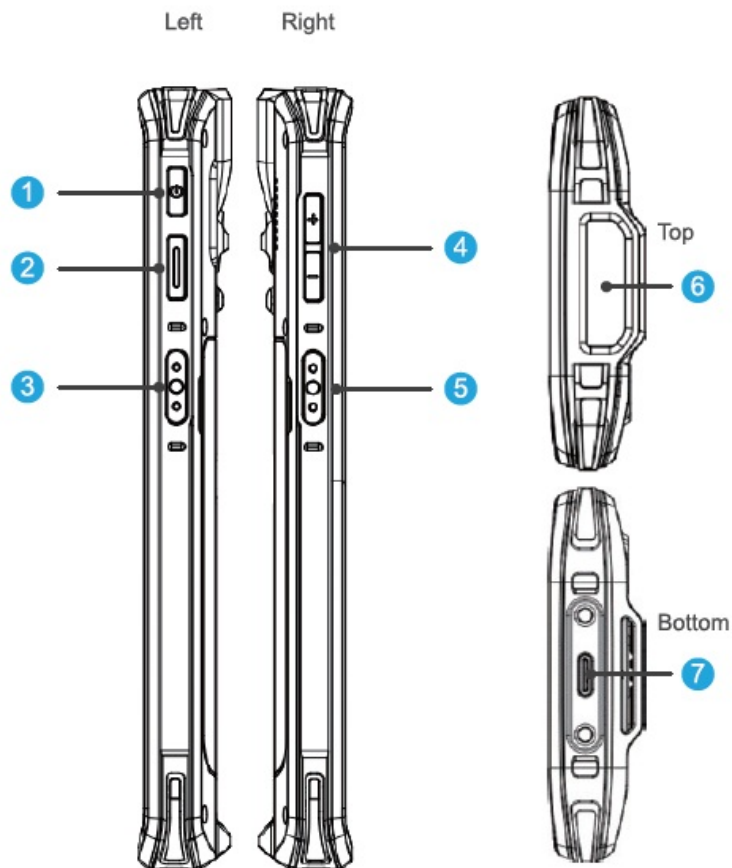
2. Scræn

3. Ctzrging Indcabr

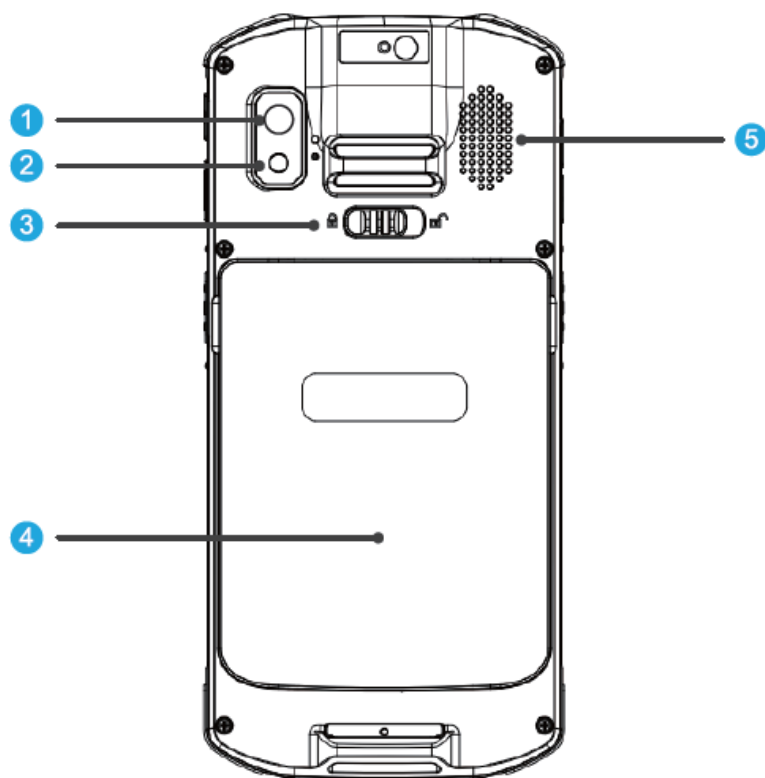
4. Receiver



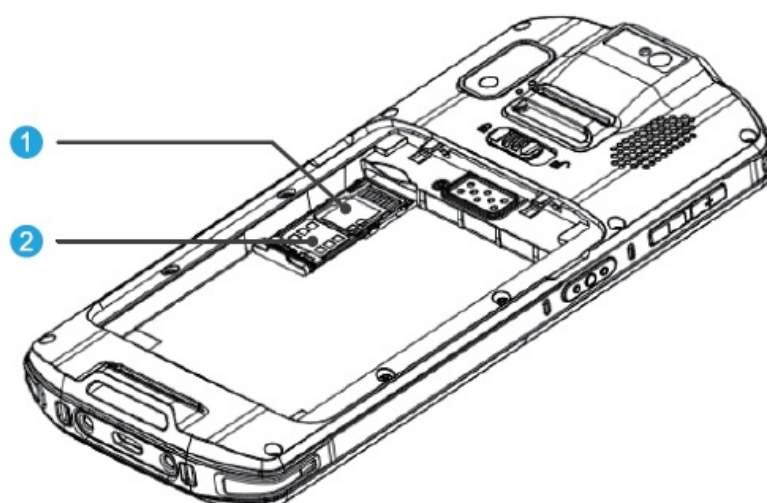
Left/ Right/ Top/ Bottom View



1. Power on 'off
2. Sæn Key
3. Key
4. Type-C Ctzrging / Inteface
5. Volume Buttm
6. Engine



- 1. Rear Camera
- 2. Battery Lock
- 3. Speaker
- 4. Flæhlight
- 5. Compartment



- 1. SIM Card1 or Micro-SD Card Slot
- 2. SIM Card2 Slot

Specification	Detailed Description
OS	Secure Android12
Processor	Qualcomm Octa-Core @2.0GHz
Memory	4GB RAM + 64GB Flash
Connectivity	GSM, WCDMA, FDD-LTE, TDD-LTE, Wi-Fi 2.4G & 5G, BT 5.0
Card Readers	USB Type-C 3.0, GPS, A-GPS, Galileo
Certification	NFC contactless: ISO 14443 Type A & B, MIFARE, Sony Felica
Communication	RoHs, FCC, CE
Environment	Drop (Multiple): 1.5m (5ft) to concrete per MIL-STD 810H. ESD: ±15 kV Air and +8 kV Direct
	IP 67 dust and waterproof rating
Power	5V 2A or 9V 2A adapter, USB Type-C
Camera	Front-facing: 5MP, AF Rear-facing: 13MP, AF, high brightness flash
Sensors	Gravity, Gyroscope, Geomagnetism, Light & Proximity, Barometer (Optional)
Dimensions	160×74 x14.35 mm (6.3x 2.9×0.56 inches)
Weight	262g (0.57IB)
Display	5.5" multi-touch color LCD panel (720×1440) covered with Gorilla Glass™m 3
Battery	4.45V 5000mAh

Scanner (Optional)	All major 1D & 2D symbologies
	Depth of Field EAN 13 (5mil) 100mm-245mm
	Depth of Field Code 39 (5mil) 90mm-345mm
	Depth of Field PDF417 (4mil) 120mm-160mm Depth of Field DataMatrix(15mil)50mm-355mm
	Depth of Field QR (15mil) 55mm-375mm
	The read speed is up to 5 times/sec'
Accessories	Wrist strap, protection cover

All features and specifications are subject to change without notice.

Contact wizarPOS website for more details. www.wizarpos.com

Operating instructions

- **on/off**

- Power on: Press the power button for 3 seconds to turn on the terminal
- Power off: Press the power button for 3 seconds. Click power off and select ok in the pop-up window to shut down the terminal.

- **Access network**

After powering on the terminal, please connect to Wi-Fi or 4G to access network services.

WLAN Setting:

Swipe down from the top of the screen to access the notification panel. Click the Wi-Fi button to turn on or off the internet. Hold on the button to get into the Wi-Fi setting. You can also click Settings and choose WLAN to get into Wi-Fi settings. Activate the Wi-Fi function, select the network that has been automatically detected, and enter the password. You can also tap on 'Add Network', input the network name, and then enter the password to connect to a Wi-Fi network. Swipe up from the screen to access the 3-button navigation.

Click the circle to return to the home page. You can repeat this process multiple times for any additional networks available, including 4G and Mobile Phone Hot Spots.

Settings all done

Once you have completed the above settings, please contact your service provider for assistance with application downloads and technical support.

Terminal self-diagnostic

To verify the functionality of the equipment, utilize the terminal's self-check capabilities. Click Settings > Self-check and choose the functionality or parts that you want to test.

Trouble Shooting

Card Transactions

Contactless Transactions: This terminal uses the contactless on screen transaction mode. Tap a contactless enabled card or smartphone on the terminal screen.

Trouble	Trouble shooting
Cannot connect the mobile network	Check whether the function of "data" is open. Check whether the APN is correct. Check whether the data service of SIM is activated.
Display unstable	The display may be interfered by instability voltage when charging, please reconnect the plug.
No response	Restart the APP or operation system.
Operation very slow	Please exit APPs which are not necessary.

FCC Statements

This device has been tested and found to comply with the limits for a Class B digital device, pursuant to part 15 of the FCC Rules. These limits are designed to provide reasonable protection against harmful interference in a residential installation. This

equipment generates, uses and can radiate radio frequency energy and, if not installed and used in accordance with the instructions, may cause harmful interference to radio communications. However, there is no guarantee that interference will not occur in a particular installation. If this equipment does cause harmful interference to radio or television reception, which can be determined by turning the equipment off and on, the user is encouraged to try to correct the interference by one or more of the following

- Reorient or relocate the receiving antenna.
- Increase the separation between the equipment and receiver.
- Connect the equipment into an outlet on a circuit different from that to which the receiver is connected.
- Consult the dealer or an experienced radio/TV technician for help.

Caution: Any changes or modifications to this device not explicitly approved by manufacturer could void your authority to operate this equipment.

This device complies with part 15 of the FCC Rules. Operation is subject to the following two conditions:

This device may not cause harmful interference, and (2) this device must accept any interference received, including interference that may cause undesired operation.

Specific Absorption Rate (SAR) information

This device meets the government's requirements for exposure to radio waves. The guidelines are based on standards that were developed by independent scientific organizations through periodic and thorough evaluation of scientific studies. The standards include a substantial safety margin designed to assure the safety of all persons regardless of age or health. FCC RF Exposure Information and Statement the SAR limit of USA {FCC} is 1.6 W/kg averaged over one gram of tissue. Device types: This device has also been tested against this SAR limit. This device was tested for typical body-worn operations with the back of the device kept 0mm from the body. To maintain compliance with FCC RF exposure requirements, use accessories that maintain an 0mm separation distance between the user's body and the back of the this device. The use of belt clips, holsters and similar accessories should not contain metallic components in its assembly. The use of accessories that do not satisfy these

requirements may not comply with FCC RF exposure requirements, and should be avoided.

Safety Warning

1. WizarPOS provides after-sales service in accordance with applicable laws and regulations. Please review the warranty terms outlined below.
2. Warranty Period: The terminal and charger are covered by a one-year warranty. During this period, if the product experiences a failure not caused by user negligence, WizarPOS will offer free repair or replacement services. For assistance, it is recommended to first contact your local distributor, and provide a completed warranty card with accurate information.
3. The warranty does not cover the following situations: unauthorized maintenance of the terminal, modifications to the terminal's operating system, installation of third-party applications causing malfunction, damage due to improper use (such as dropping, crushing, impact, immersion, fire, etc.), missing or inaccurate warranty information, expired warranty period, or any other activities that violate legal regulations.
4. Follow installation instructions carefully and use only the specified power adapter. Replacing it with other adapters is prohibited. Ensure that the power socket meets the required voltage specifications. It is recommended to use a socket with a fuse and ensure proper grounding.
5. To clean the terminal, use a soft, lint-free cloth-avoid using chemicals and sharp objects.
6. Keep the terminal away from liquids to prevent short circuits or damage caused by splashes, and avoid inserting foreign objects into any ports.
The terminal and battery should not be exposed to direct sunlight, high temperatures, smoke, dust, or humidity.
7. If the terminal malfunctions, contact certified POS maintenance professionals for repair. Unauthorized personnel should not attempt repairs.
8. Do not modify the terminal without authorization. Modifying a financial terminal is illegal. Users assume the risks associated with installing third-party applications, which may cause the system to operate at reduced speeds.
9. In case of abnormal odors, overheating, or smoke, immediately disconnect the power supply.

10. Do not place the battery in fire, disassemble it, drop it, or apply excessive pressure. If the battery is damaged, immediately discontinue use and replace it with a new one. The battery charging time should not exceed 24 hours. If the battery is not used for an extended period, charge it every six months. For optimal performance, replace the battery after two years of continuous use.
11. The disposal of batteries, equipment, and accessories must comply with local regulations. These items cannot be discarded as household waste. Improper disposal of batteries may lead to hazardous situations such as explosions.

Environment



Operating temperature
-10°C~50°C (+14°F to 122°F)



Operating humidity
5%~95% No condensation




Storage temperature
-20°C~70°C (-4°F to 158°F)

Repair Date	Repair Content

For more information, please log on to the company's official website

<http://www.wizarpos.com>

Documents / Resources

	<p>WizarPOS Q3 PDA Android Mobile POS [pdf] User Manual</p> <p>Q3 PDA Android Mobile POS, Q3 PDA, Android Mobile POS, Mobile POS</p>
---	--

References

- [User Manual](#)

📱 Android Mobile POS, Mobile POS, Q3 PDA, Q3 PDA Android Mobile POS,

📁 wizarpos wizarpos

Leave a comment

Your email address will not be published. Required fields are marked *

Comment *

Name

Email

Website

☐ Save my name, email, and website in this browser for the next time I comment.

Post Comment

Search:

e.g. whirlpool wrf535swhz

Search

[Manuals+](#) | [Upload](#) | [Deep Search](#) | [Privacy Policy](#) | [@manuals.plus](#) | [YouTube](#)

This website is an independent publication and is neither affiliated with nor endorsed by any of the trademark owners. The "Bluetooth®" word mark and logos

are registered trademarks owned by Bluetooth SIG, Inc. The "Wi-Fi®" word mark and logos are registered trademarks owned by the Wi-Fi Alliance. Any use of these marks on this website does not imply any affiliation with or endorsement.