



WiZ 348603472 Motion Sensor User Guide

[Home](#) » [wiz](#) » WiZ 348603472 Motion Sensor User Guide 



QUICK SETUP

Contents

- [1 348603472 Motion Sensor](#)
- [2 Important information](#)
- [3 Symbols explanation:](#)
- [4 MPE Reminding](#)
- [5 Documents / Resources](#)
 - [5.1 References](#)
- [6 Related Posts](#)

348603472 Motion Sensor

Before starting the setup process. make sure at least 1 W1Z light in the room is turned on and connected to w,-Fi.

1. SELECT A ROOM IN THE APP



Press + on the top right corner and select “Motion Sensor”.

2. ADD MOTION SENSOR TO ROOM



Follow the on-screen steps in the app to complete setup.

3. ENJOY LIGHTING WITH MOTION DETECTION

Simply walk by to trigger your lights

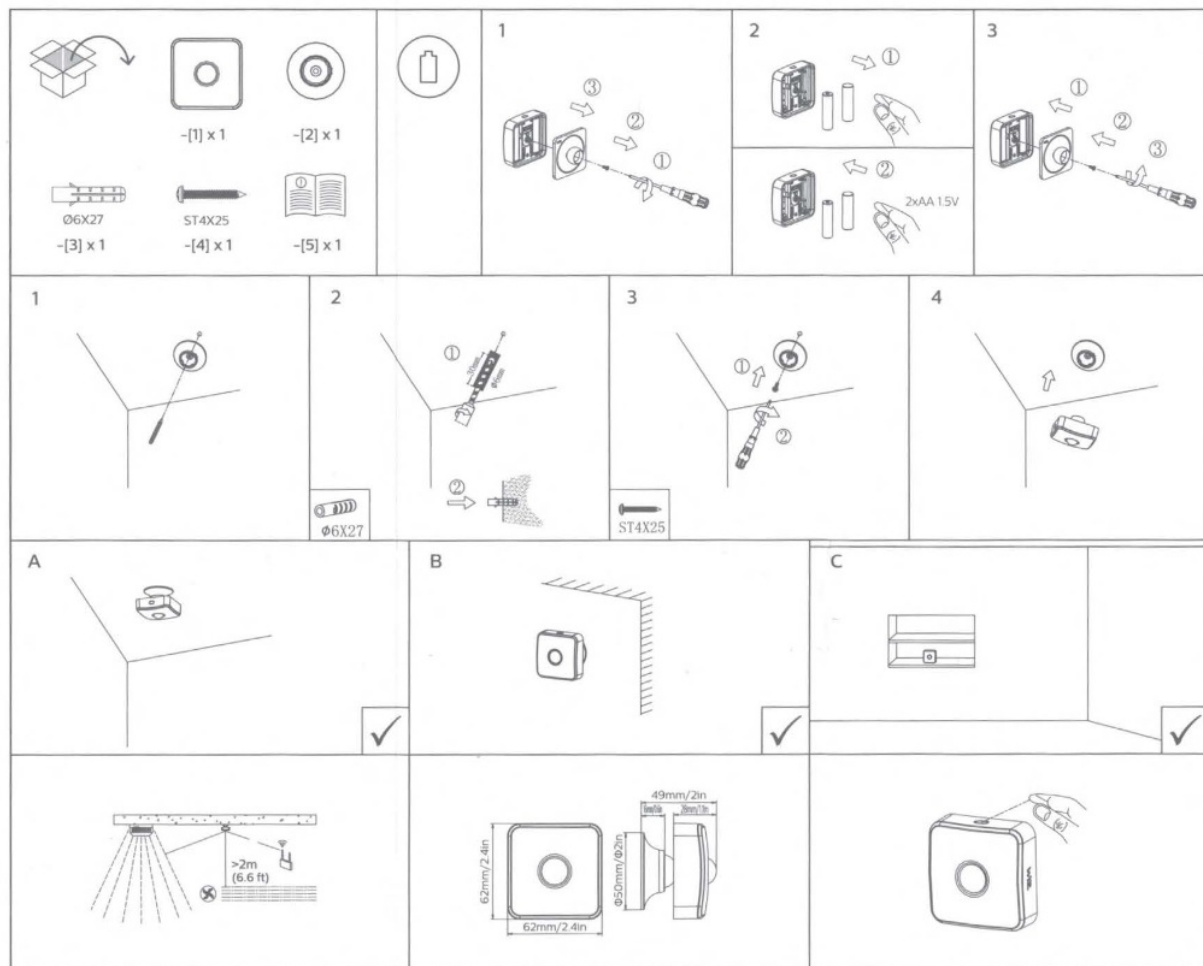


Notes:

1. By setting Rhythms for the room, in the WiZ app, you can make your sensor trigger different light modes at different times of the day.
2. The WiZ motion sensor is attached to a single room and only triggers the lights in that room. You can move the sensor in the app if you want it to trigger lights in another room instead.

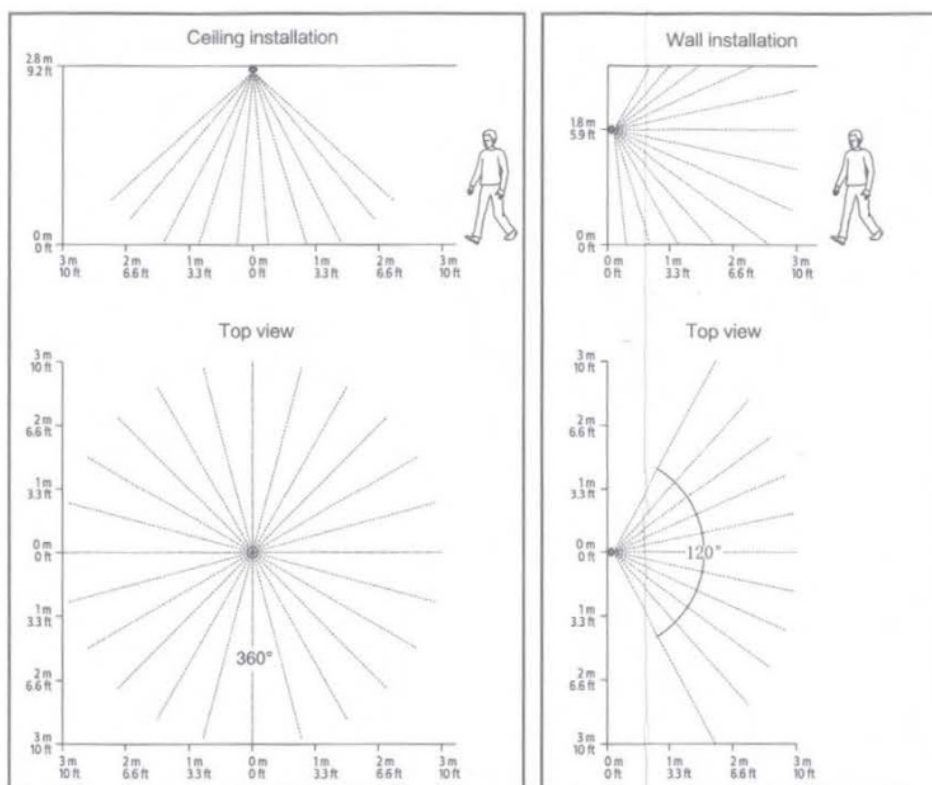
Need help?

Get in touch through our in-app chat support.



What does it do?

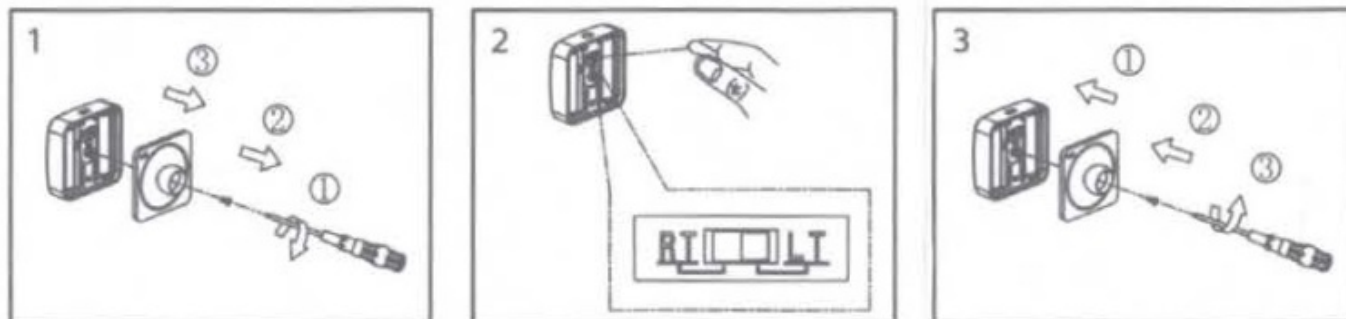
WiZ motion sensor triggers automatic responses to turn on and turn off the lights according to motion detection. You can also select the mode and brightness of your choice for “motion” and “no motion” states. For example, you could say “go to Daylight when there is motion, and night light when there,s none”. Motion detection works without Wi-Fi. The detection range is approximately 3 meters (10 feet) with a beam angle of 120 degrees. The motion sensor control range (i.e the distance between the motion sensor and controlled lights) is approximately 15 m (50 feet) in a normal room environment with partitions and walls. The range can be longer with a clear line of sight. The exact distance depends on the surrounding environment as obstacles may weaken the signal.



Adjust the sensitivity of the sensor and the battery usage time

RT: Response Time (the default setting) It increases the responsiveness of the sensor, which will report the absence of motion after S minutes.

LT: LI, Time (of battery). It makes the sensor report the absence of motion after 12 minutes. thus increasing the battery lifetime.



Product	WiZ PIR motion sensor
Reference	9.29E+09
Location	For indoor use
Ambient temperature	-20°C – +45°C / -4°F – +113°F
Battery type	LR6 (AA) 1.5 Vd.c x 2 (not provided)

Important information

- For indoor use only. Do not try to open or repair it (except for battery replacement).
- Suitable for dry location only.
- Use only with specified batteries; do not use rechargeable batteries; do not use different brands or new/old batteries together; replace the exhausted batteries in time.

- Keep it away from water and heat sources (e.g. heater, air conditioner airflow).

Symbols explanation:

Waste Electrical and Electronic Equipment



■ This product must be disposed of at a designated collection point for Electrical and Electronic waste. For more information, contact your local city office or the shop where you purchased the product.



Indoor use only

Caution:

The device complies with Part 15 of the FCC Rules / Industry Canada license-exempt RSS standard(s). Operation is subject to the following two conditions:

1. this device may not cause harmful interference, and
2. this device must accept any interference received, including interference that may cause undesired operation.

Changes or modifications not expressly approved by the party responsible for compliance could void the user's authority to operate the equipment.

NOTE:

This equipment has been tested and found to comply with the limits for a Class B digital device, pursuant to part 15 of the FCC Rules. These limits are designed to provide reasonable protection against harmful interference in a residential installation. This equipment generates uses and can radiate radio frequency energy and, if not installed and used in accordance with the instructions, may cause harmful interference to radio communications.

However, there is no guarantee that interference will not occur in a particular installation. If this equipment does cause harmful interference to radio or television reception, which can be determined by turning the equipment off and on, the user is encouraged to try to correct the interference by one or more of the following measures:

- Reorient or relocate the receiving antenna.
- Increase the separation between the equipment and receiver.
- Connect the equipment into an outlet on a circuit different from that to which the receiver is connected.
- Consult the dealer or an experienced radio/TV technician for help.

MPE Reminding

To satisfy FCC/ IC RF exposure requirements, a separation distance of 20 cm or more should be maintained between the antenna of this device and persons during device operation.

To ensure compliance, operations closer than that distance are not recommended.

Wi-Fi, the Wi-Fi logo, and the Wi-Fi CERTIFIED logo are registered trademarks of Wi-Fi Alliance.

Wi-Fi CERTIFIED™, WPA2™ are trademarks of Wi-Fi Alliance.

Google, Google Play, and the Google Play logo are trademarks of Google LLC.

The Apple logo and Siri are trademarks of Apple Inc., registered in the U.S. and other countries and regions. App Store is a service mark of Apple Inc.


All product names, logos, and brands are the property of their respective owners.

Any use of such marks by Signify is under license.



wizconnected.com

Documents / Resources

 A black rectangular cover for a 'QUICK SETUP' guide. The text 'QUICK SETUP' is in white at the top, and the 'WiZ' logo is at the bottom.	<p>WiZ 348603472 Motion Sensor [pdf] User Guide 348603472, Motion Sensor, 348603472 Motion Sensor</p>
--	---

References

- w. wizconnected.com

Manuals+.