



Contents [[hide](#)]

- [1 WIWUE GUO 2012 Food Scale](#)
- [2 INTRODUCTION](#)
- [3 SPECIFICATIONS](#)
- [4 WHAT'S IN THE BOX](#)
- [5 FEATURES](#)
- [6 SETUP GUIDE](#)
- [7 CARE & MAINTENANCE](#)
- [8 TROUBLESHOOTING](#)
- [9 PROS & CONS](#)
- [10 WARRANTY](#)
- [11 FREQUENTLY ASKED QUESTIONS](#)
- [12 VIDEO – PRODUCT OVERVIEW](#)
- [13 References](#)

WIWUE GUO

WIWUE GUO 2012 Food Scale



INTRODUCTION

A stylish and useful kitchen tool, the WIWUE GUO 2012 Digital Food Scale is made to improve your baking, cooking, and meal preparation. This scale, which costs \$6.76, provides accuracy and adaptability without going over budget. Its accuracy of 1 gram (0.05 oz) and maximum capacity of 11 pounds (5000 grams) guarantee accurate measurements for a range of ingredients. In addition to being durable, the 304 stainless steel surface is easy to clean. Even in low light, its backlit LCD panel provides readable information. This scale is a dependable partner in your culinary pursuits, whether you're monitoring portion sizes, experimenting with recipes, or tracking nutrition.

SPECIFICATIONS

Brand	WIWUE GUO
Model	2012

Capacity	11 lbs (5000 grams)
Accuracy	1 gram (0.05 oz)
Units of Measurement	oz, mL, lb:oz, g
Display	Backlit LCD
Material	304 Stainless Steel
Power Source	2 AAA batteries (included)
Auto Shut-Off	Yes, after 2 minutes of inactivity
Tare Function	Yes
Dimensions	7 x 5.5 x 0.7 inches
Weight	7.9 ounces
Color	White
Recommended Uses	Food, Jewelry, Mail, Medicines, Adults



WHAT'S IN THE BOX

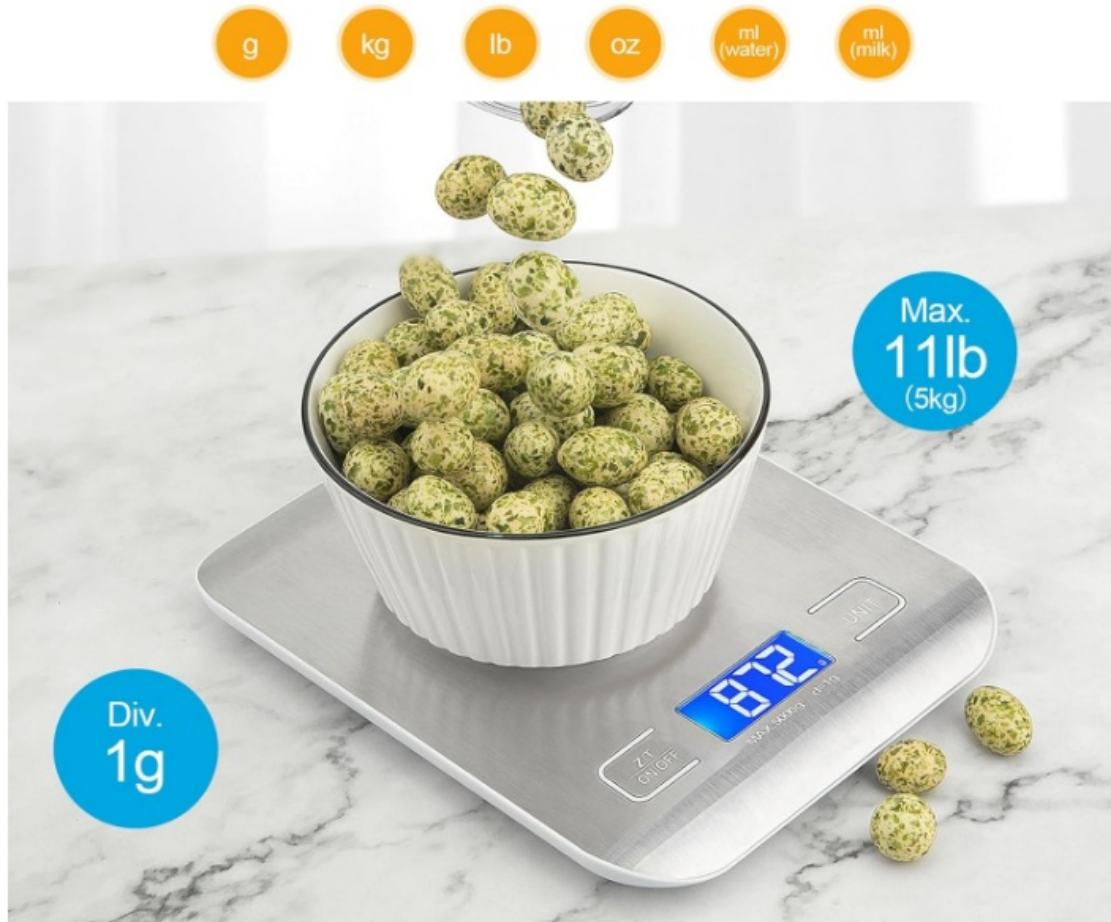
- WIWUE GUO 2012 Digital Food Scale
- 2 AAA Batteries
- User Manual

FEATURES

- **High Capacity:** Weighs up to 11 lbs (5000 grams), accommodating various ingredients.
- **Precision Accuracy:** Measures in 1-gram increments for detailed measurements.
- **Multiple Units:** Supports oz, mL, lb:oz, and g units for versatile use.

Multiple Unit

Accurate measurement by switching unit in g, kg, lb, oz, ml(water), ml(milk)



- **Backlit LCD Display:** Ensures clear readability in any lighting condition.

Easy to Read

Clearly Read Your Results On the Bright Backlit LCD Display.



- **304 Stainless Steel Surface:** Durable, sleek, and easy to clean.
- **Tare Function:** Allows for zeroing out containers for net weight measurements.
- **Auto Shut-Off:** Conserves battery life by turning off after 2 minutes of inactivity.
- **Compact Design:** Easy to store in kitchen drawers or cabinets.
- **Lightweight:** Weighs only 0.07 OZ , making it portable.

Accurate Results

Accurately Weigh Objects from 0.07 oz(2 g) to 11 lb(5 kg).

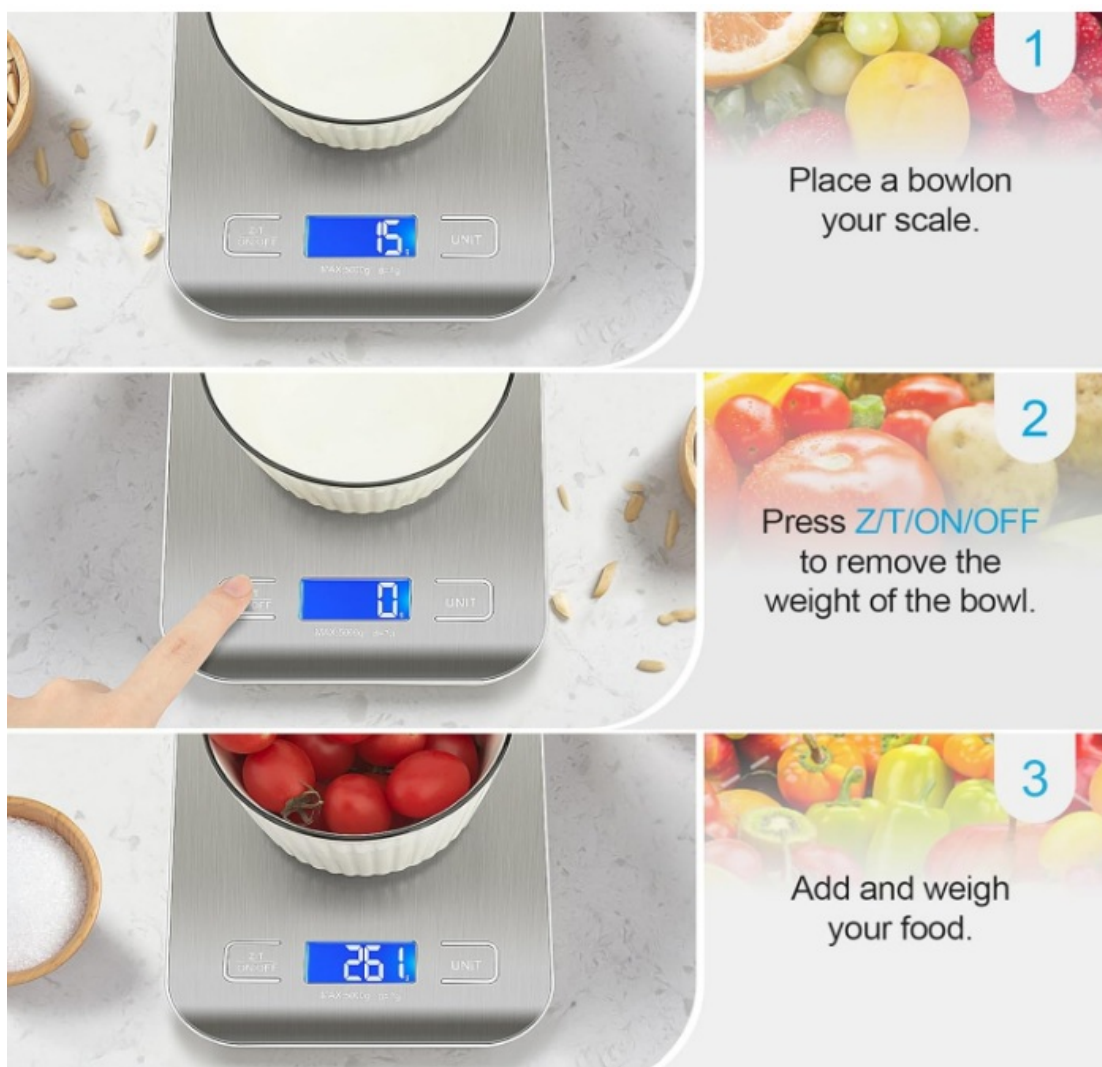


- **Stylish Appearance:** Modern white finish complements any kitchen decor.
- **Battery Included:** Comes with 2 AAA batteries ready for use.
- **Multi-Purpose Use:** Ideal for cooking, baking, dieting, and portion control.
- **Easy to Operate:** Simple one-button unit conversion and tare functionality.
- **Low Battery Indicator:** Alerts you when it's time to replace batteries.
- **Non-Slip Feet:** Provides stability during use.

SETUP GUIDE

- **Remove Packaging:** Unbox the scale and remove any protective films.
- **Install Batteries:** Place the included 2 AAA batteries into the battery compartment.
- **Power On:** Press the power button to turn on the scale.
- **Select Unit:** Press the "UNIT" button to choose your desired measurement unit (oz, mL, lb:oz, g).
- **Tare Function:** Place your container on the scale and press the "TARE" button to zero it out.

- **Weigh Ingredients:** Add your ingredients to the container and read the weight on the display.
- **Auto Shut-Off:** The scale will automatically turn off after 2 minutes of inactivity.
- **Cleaning:** Wipe the stainless steel surface with a damp cloth after each use.
- **Storage:** Store the scale in a dry place to prevent damage.
- **Battery Replacement:** Replace batteries when the low battery indicator appears.
- **Avoid Overloading:** Do not exceed the 11 lb capacity to prevent damage.
- **Avoid Submersion:** Do not submerge the scale in water.
- **Avoid Sharp Objects:** Do not use sharp objects on the scale surface.
- **Avoid Spills:** Clean any spills immediately to prevent residue buildup.
- **Regular Calibration:** Use known weights to calibrate the scale periodically.



CARE & MAINTENANCE

- **Regular Cleaning:** Wipe the scale with a damp cloth after each use.
- **Avoid Harsh Chemicals:** Do not use abrasive cleaners or chemicals.

- **Dry Immediately:** Ensure the scale is dry before storing.
- **Battery Care:** Remove batteries if the scale will not be used for an extended period.
- **Store Properly:** Keep the scale in a dry, cool place.
- **Avoid Moisture:** Do not expose the scale to excessive moisture.
- **Protect from Impact:** Avoid dropping or knocking the scale.
- **Use Flat Surface:** Place the scale on a flat, stable surface during use.
- **Avoid Overloading:** Do not exceed the maximum weight capacity.
- **Check Battery Level:** Replace batteries when the low battery indicator appears.
- **Avoid Direct Sunlight:** Keep the scale out of direct sunlight to prevent screen damage.
- **Use Appropriate Containers:** Use containers that fit comfortably on the scale.
- **Avoid Spills:** Clean any spills immediately to prevent residue buildup.
- **Regular Calibration:** Calibrate the scale periodically with known weights.

TROUBLESHOOTING

Issue	Solution
Scale won't turn on	Check and replace batteries if necessary.
Display is dim	Replace batteries.
Inaccurate readings	Calibrate with known weights.
Tare function not working	Ensure the container is on the scale before pressing T ARE.
Unit conversion error	Press the "UNIT" button to select the correct unit.
Auto shut-off not working	Ensure the scale is not in continuous use.
Overload warning	Remove excess weight to stay within capacity.
Battery compartment issues	Ensure batteries are installed correctly.
Unresponsive buttons	Clean the buttons and ensure no debris is present.

Issue	Solution
Scale not zeroing out	Press the “TARE” button with no items on the scale.

PROS & CONS

Pros:

- **Multi-Unit Conversion:** Supports grams, ounces, milliliters, and pounds, catering to diverse measurement needs.
- **High Capacity:** Can weigh up to 11 pounds (5 kg), suitable for various ingredients.
- **Tare Function:** Allows for zeroing out containers, ensuring accurate net weight measurements.
- **Backlit LCD Display:** Ensures clear readability, even in low-light conditions.
- **Compact Design:** Slim profile makes it easy to store and clean.

Cons:

- **Battery Operated:** Requires 2 AAA batteries, which are included but may need replacement over time.
- **No Rechargeable Option:** Lacks a built-in rechargeable battery, leading to recurring battery costs.
- **Limited Warranty Information:** Warranty details are not explicitly provided, which may concern some users.
- **Plastic Construction:** While the scale is lightweight, the plastic build may not be as durable as metal counterparts.
- **No Bluetooth Connectivity:** Lacks smart features like app connectivity found in higher-end models.

WARRANTY

The WIWUE GUO 2012 Food Scale offers a 30-day money-back guarantee, allowing customers to return the product within this period for a full refund if not satisfied. However, specific warranty details beyond this return policy are not clearly stated, which may require direct contact with the manufacturer or retailer for further information.

FREQUENTLY ASKED QUESTIONS

What is the maximum weight capacity of the WIWUE GUO 2012 Food Scale?

The WIWUE GUO 2012 Food Scale can measure up to 11 pounds (approximately 5 kilograms), making it suitable for a variety of ingredients and meal prep needs.

Which units of measurement does the WIWUE GUO 2012 Food Scale support?

This scale can easily convert between grams (g), ounces (oz), milliliters (mL), and pounds:ounces (lb:oz) for versatile use.

How do I switch units on the WIWUE GUO 2012 Food Scale?

Simply press the unit conversion button on the scale to toggle between g, oz, mL, and lb:oz.

Does the WIWUE GUO 2012 Food Scale have a tare function?

The tare function allows you to reset the scale to zero, making it easy to measure multiple ingredients in one container.

What kind of display does the WIWUE GUO 2012 Food Scale use?

The scale features a large, backlit LCD display that is easy to read, even in dim lighting.

Does the WIWUE GUO 2012 Food Scale automatically turn off?

The auto shut-off feature helps save battery life if the scale is left idle for a few minutes.

What batteries are required for the WIWUE GUO 2012 Food Scale?

The scale requires 2 AAA batteries, which are included in the package.

VIDEO – PRODUCT OVERVIEW

<https://manuals.plus/wp-content/uploads/2025/08/WIWUE-GUO-2012-Food-Scale-User-Manual-2.mp4>

References

- [User Manual](#)

WIWUE
GUO

2012, B0BJ92NRC5, Food Scale, user manual, WIWUE GUO, WIWUE GUO
2012

Leave a comment

Your email address will not be published. Required fields are marked *

Comment *

Name

Email

Website

☐ Save my name, email, and website in this browser for the next time I comment.

Post Comment

Search:

e.g. whirlpool wrf535swhz

Search

[Manuals+](#) | [Upload](#) | [Deep Search](#) | [Privacy Policy](#) | [@manuals.plus](#) | [YouTube](#)

This website is an independent publication and is neither affiliated with nor endorsed by any of the trademark owners. The "Bluetooth®" word mark and logos are registered trademarks owned by Bluetooth SIG, Inc. The "Wi-Fi®" word mark and logos are registered trademarks owned by the Wi-Fi Alliance. Any use of these marks on this website does not imply any affiliation with or endorsement.