



WitMotion WT901BLECL Bluetooth 5.0 Inclinator Sensor User Guide

[Home](#) » [WitMotion](#) » WitMotion WT901BLECL Bluetooth 5.0 Inclinator Sensor User Guide 

WitMotion WT901BLECL Bluetooth 5.0 Inclinator Sensor User Guide

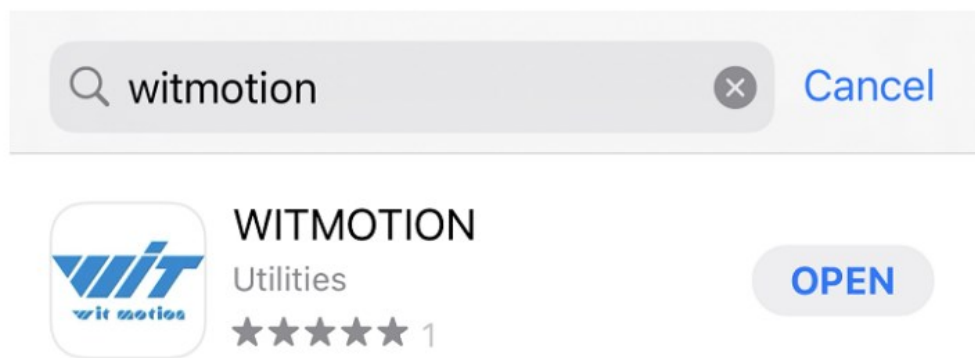


Contents

- 1 [How to get the APP? iPhone Search](#)
- 2 [Preparation](#)
- 3 [Quick pairing](#)
- 4 [Config Menu](#)
- 5 [Data Recording](#)
- 6 [PC Connection](#)
- 7 [Cable Connection](#)
- 8 [Adapter Connection](#)
- 9 [Config Menu](#)
- 10 [Documents / Resources](#)
- 11 [Related Posts](#)

How to get the APP? iPhone Search

“WITMOTION” on App Store



Android

Scan the QR code and download



Preparation

1. Turn the sensor switch to ON, the blue light will flash quickly.



2. Download and install the APP, allow the access of Bluetooth, Location.
3. Open the APP, select module type “BLE5.0 Series”

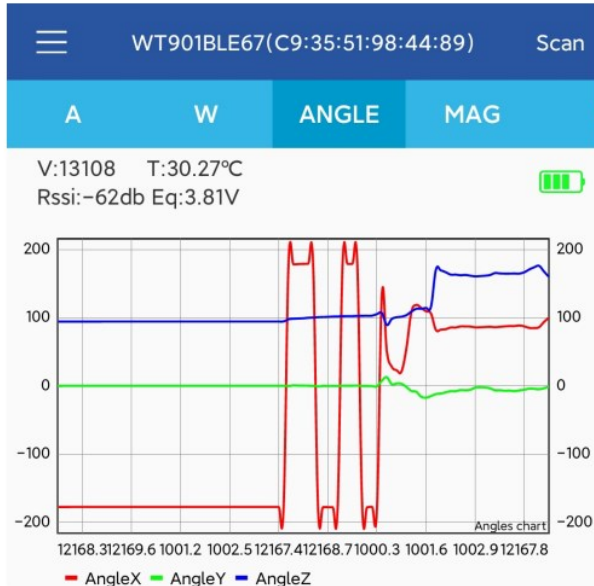


Quick pairing

Step 1. Click “Scan” to search for the device (“WT901 BLE”+”MAC address”)

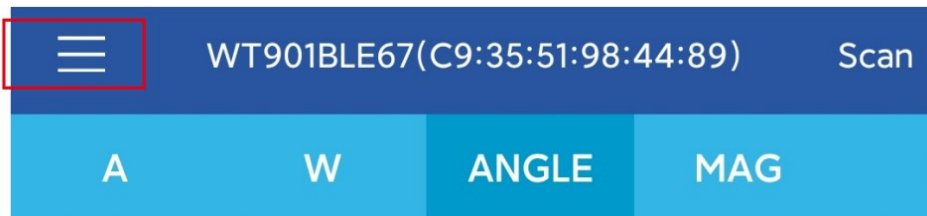


Step 2. The data appears automatically after successful pairing, and the blue light will flash slowly.



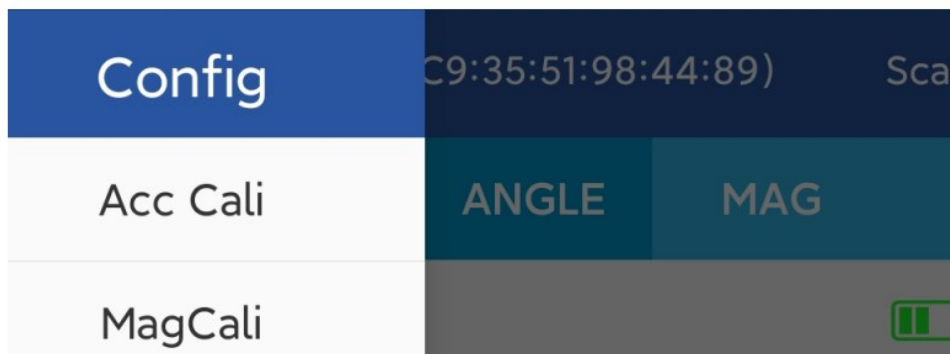
Config Menu

Step 1. Click the icon in the upper left corner.



Step 2. Configure the sensor as you wish.

*For details, please kindly check the manual.



Data Recording

1. Click record, start recording, then click stop as you prefer.

AngleZ:	-92.18°
T:	31.07°C

RECORD

AngleZ:	-119.99°
T:	31.07°C

STOP

2. The recorded file can be found by searching “rec” on the file manager of your phone.
3. The txt file can be easily opened if you use the Excel nrrnram likp Mirrncnft nffirpi

← **Rec_0530_102631** 🔍 📁

2022-05-30

10:26:31.181,a,0.2554,0.0845,1.0659,w,22.8271
 ,89.9048,31.3110,Angle,2.1149,-
 9.1406,160.5103,h,308,-

Document Center:

Scan the QR code to get the complete tutorial of

WT901BLECL

Github



Google Drive



Having troubles with our products?
We are here to help.



support@wit-motion.com

PC Connection

How to get software?

Scan the QR code, click to download BLE5.0 Software for Windows PC and unzip the files.



For cable connection, you can simply use the cable packed with sensor.

For adapter connection, you need buy the BLE 5.0 adapter

WT901BLECL



Type-C cable



BLE Adapter



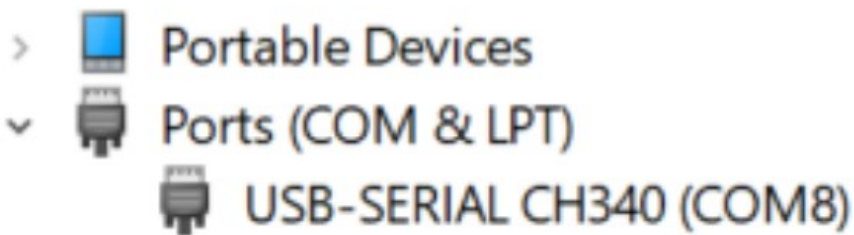
Cable Connection

Step1. Connect the sensor with offered Type-C wire and turn the switch to ON.

Step2. Install the driver- CH340, scan the QR code, click to download driver.



Step3. Open the device manager, confirm if there is Com ports (COM & LPT) generated.



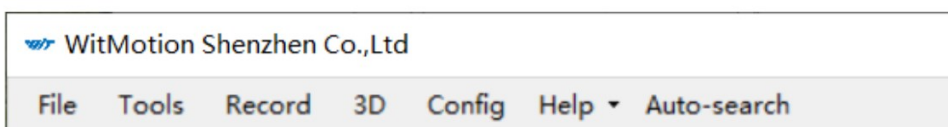
Step4. Open the software(Minimu.exe)



MiniIMU.exe



Step5. Hit “Auto-search” button and wait for 30 seconds, data will appear.



Adapter Connection

The pairing process of connection may vary from the different operating systems.

Windows 7 OS computer

Please check below QR code for detailed instructions.



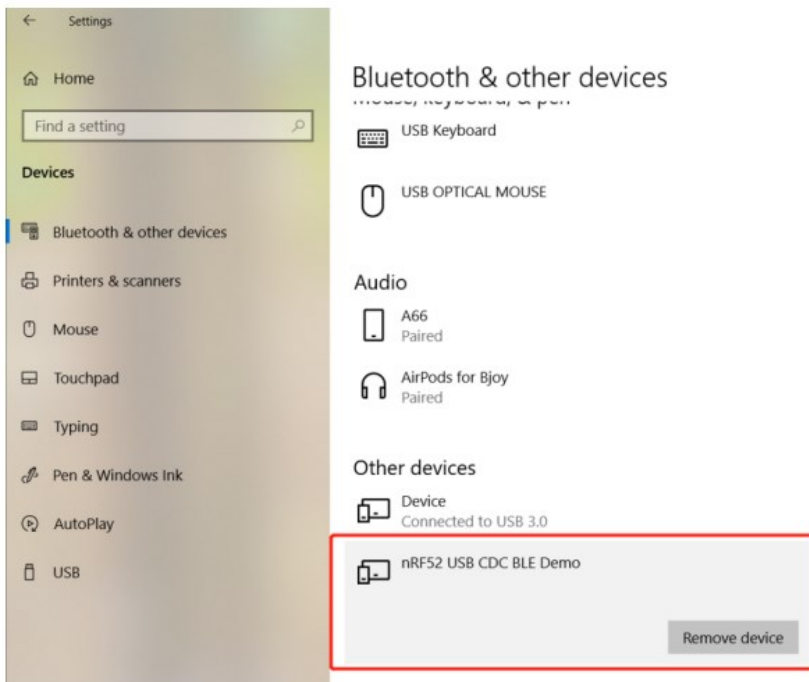
Windows 10 OS computer

Complete Process:

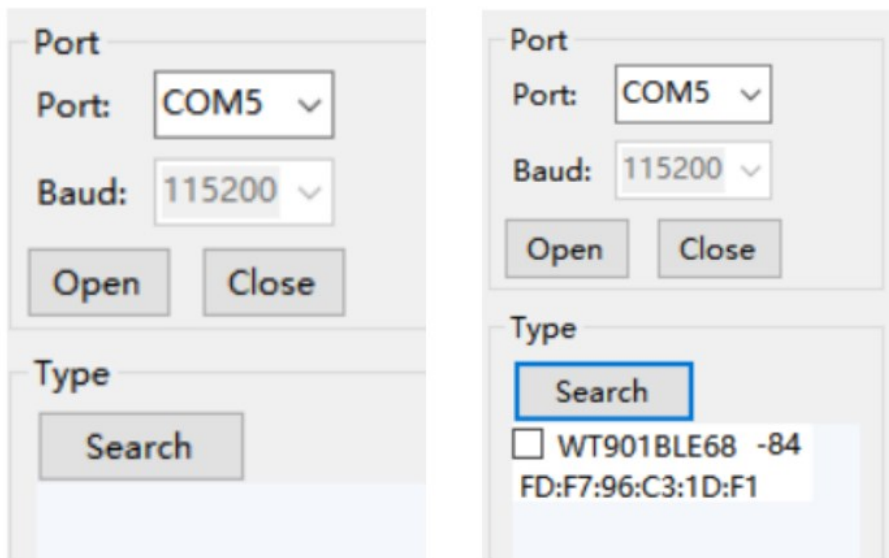
Step 1. Insert adapter into the USB port firstly, turn on the sensor after blue light of adapter flashes.



Step 2. You can find “nRF52” on “Bluetooth & other devices” control panel once it is recognized.



Step 3. Run the MinilMU.exe application as page 10 hit “search” button to find the device



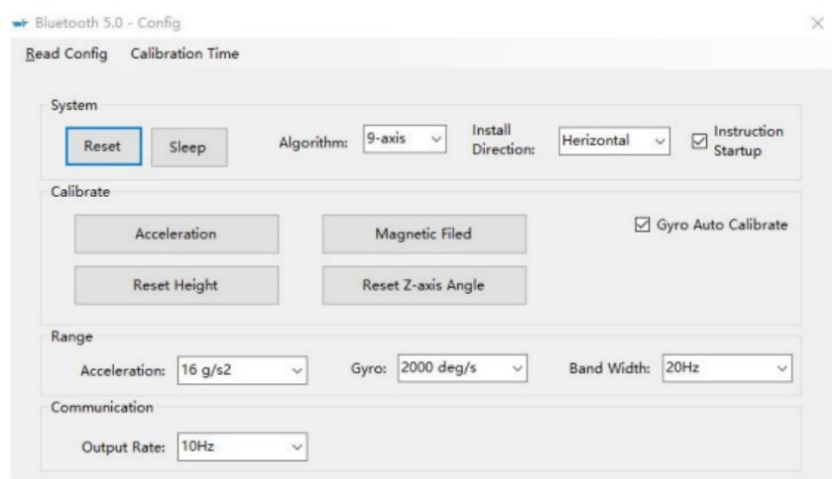
Step 4. Select “device” and wait for 30 seconds, data will appear.




Config Menu

Preparation: Ensuring the sensor is “Online”.
Calibration on PC software: It is recommended to calibrate for the first time usage.

- For more, please kindly check the manual.



Documents / Resources

	WitMotion WT901BLECL Bluetooth 5.0 Inclinometer Sensor [pdf] User Guide WT901BLECL Bluetooth 5.0 Inclinometer Sensor, WT901BLECL, Bluetooth 5.0 Inclinometer Sensor, 5.0 Inclinometer Sensor, Inclinometer Sensor, Sensor
---	--