



WISTEK B6T Bluetooth Tire Pressure Monitoring System User Manual

[Home](#) » [WISTEK](#) » WISTEK B6T Bluetooth Tire Pressure Monitoring System User Manual 

WISTEK B6T Bluetooth Tire Pressure Monitoring System User Manual



Contents

- 1 App Download and Install
- 2 Sensor Parameter
- 3 How To Use
- 4 Sensor Installation
- 5 Pairing
- 6 Documents / Resources
 - 6.1 References
- 7 Related Posts

App Download and Install

System Requirements

The tire pressure monitoring system supports Android 4.0 and above systems, or IOS 7.0 and above, or Bluetooth 4.0 and above.

Download App

1. Apple Phone User: Search for “SYTPMS” in the APP Store to download directly.(As shown below).

SYTPMS

it was stolen

2.6★

31 comments

1000+

download times

3+

over 3 years old

Install

add to wishlist

This app is not available on your device



<https://play.google.com/store/apps/details?id=com.bekubee.sytpms>

2. Android Phone User: Scan the QR code on the manual or on the back of the box to download and install the app (As shown below).



In order to be compatible with more versions of mobile phones and platforms, the APP will be continuously updated. If you encounter problems, please contact the customer service in time.

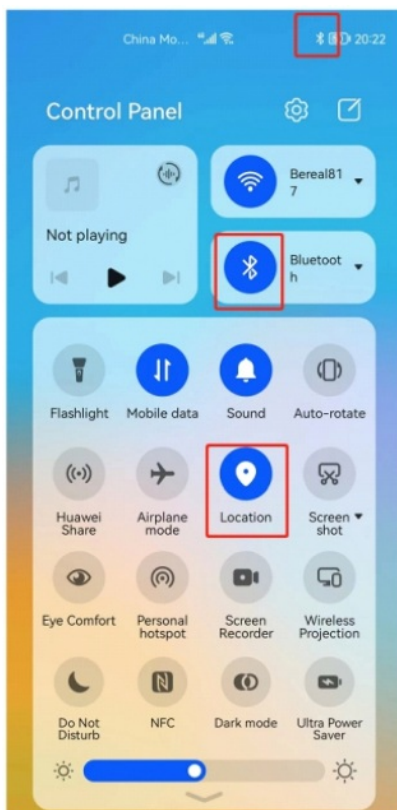


The APP after successful installation is shown below

The language selection of APP will depend on the phone itself. Currently supported:

German/ Japanese/ French/Thai/Simplified Chinese/ Traditional Chinese/ English/Dutch/
Portuguese/Spanish/Vietnamese,etc.

After installing the App, please make sure that the Bluetooth and Location icons are turned on, such as the Android phone picture.



3. At present, the App can be installed on smartphone, and will be gradually upgraded to other devices (such as navigation, recorders and other electronic devices).

Sensor Parameter

1. Package size: 5.5×6.5×1.85mm.
2. Pressure/2-axis magnetic sensor/temperature/voltage sensor/MCU.

3. P-sensor measuring range: 0.7-7BAR (10psi~100psi), error +/-0.1BAR.
4. Working voltage: 2.1V~3.6V.
5. Operating temperature range: -40°C~125°C.
6. 8051 compatible micro controller 14K byte MTP for customer / 256 byte RAM ■RF.
7. 433/315Mhz Transmitter, RF: 2.4G BLE Transceiver; BLE 4.0/4.1/4.2 Compatible.
8. (BLE TPMS: patent authorization), LFR: (low frequency receiver)125Khz receiver.
9. Sleep current: 0.3uA @25°C, 2.5uA @105°C, 3.8uA @125°C.
10. Battery life: External for about 1-2 years.

How To Use

Interface Operation

1. Open the App(the Bluetooth should be turned on at this time), and enter the main menu (As shown below).



Icon Function Explanation:

Bar: Indicates the current tire pressure;

V: Indicates the current sensor voltage;

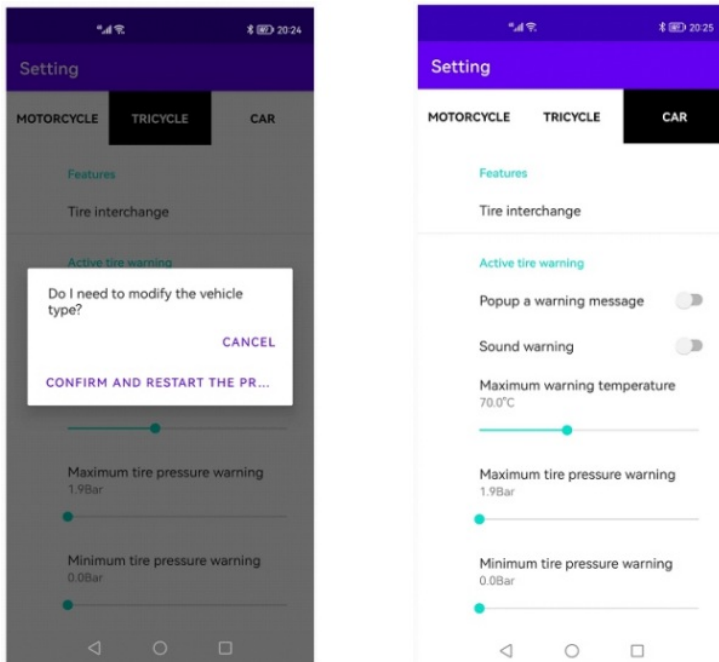
°C: Indicates the current tire temperature;

Pair: Click to pair the tire sensor:

Setting: Menu options,click to select vehicle type (Motorcycle, Tricycle, Car).

2. Operation Steps:

Select the setting menu, and select the corresponding vehicle type (Motorcycle, Tricycle, Car).



Detailed Explanation:

1. Tire exchange: There are 6 combinations after clicking in (if the tire changes position, remember to exchange them accordingly to ensure correct tire monitoring).
2. Popup a warning message and Sound warning: Turn on these two options to alert when the tire is abnormal.
3. Maximum warning temperature: Set a maximum value. When the tire is running normally, its temperature will not exceed this value and there will be no prompt. Once the value is exceeded, an alarm will sound.
4. Maximum tire pressure warning and minimum tire pressure warning: Choose according to the set vehicle (each vehicle has a standard tire pressure setting).
5. Temperature unit (°C/°F) and tire pressure unit (BAR/PSI/KPA) can be set according to requirements.
6. Restore factory settings: Click the restore factory settings will directly return to the main interface to re-pair the corresponding sensors.

Sensor Installation

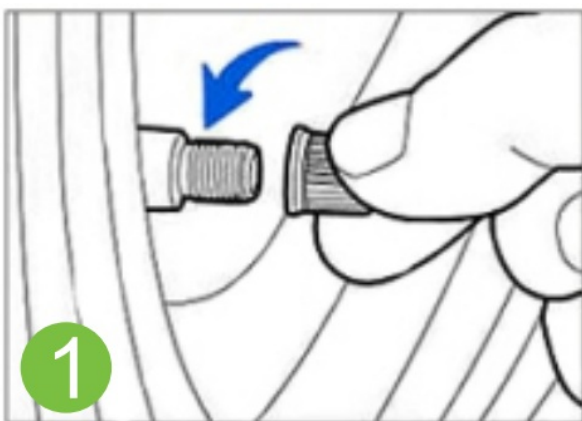
Installation suggestions:

Install the F(front) sensor first, and then click Pair on the APP interface. After the pairing is successful, install the R(rear) sensor.

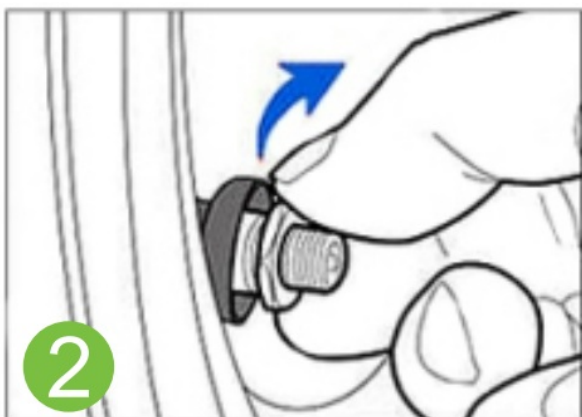
External tire pressure installation is shown in below:

External sensor

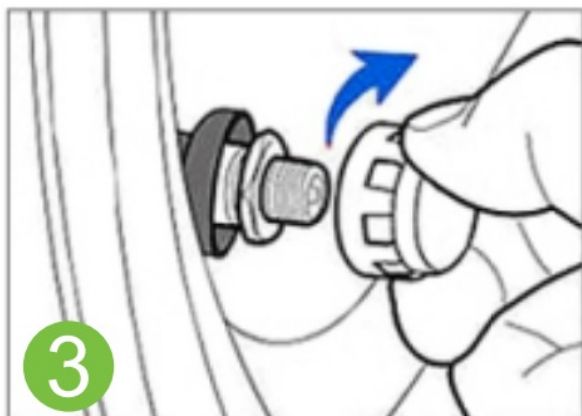
1. Turn the valve cap out.



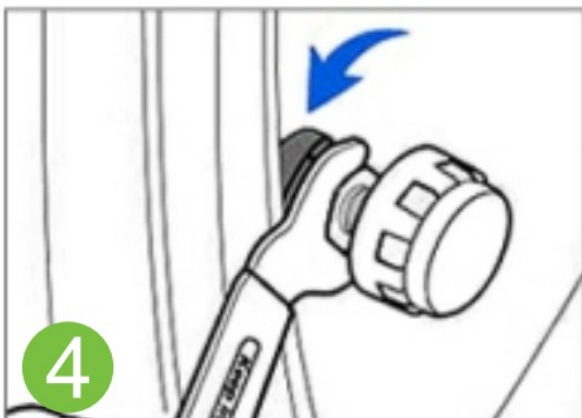
2. Turn the hexagon nut in.



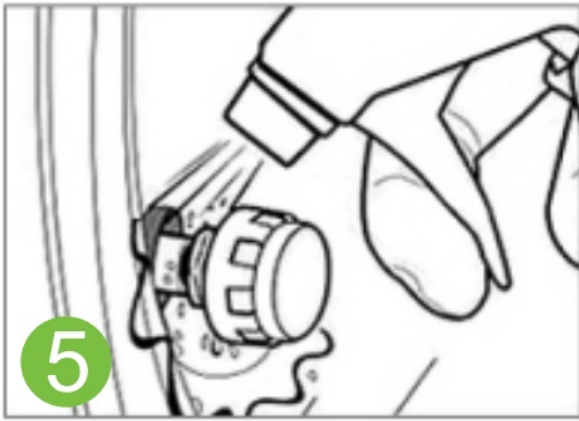
3. Install it on the corresponding tire according to the position identification on the sensor.



4. Tighten the nut towards the sensor with a wrench.



5. Check for air leakage with soapy water. If there are bubbles, the tire is leaking. Please check whether the hexagon nut and sensor are tightened.



Pairing

After the sensor is installed, you need to click the Pair button(the interface will appear: Pairing, please wait....). When the pairing is successful, the corresponding value will appear in the corresponding tire position, such as: pressure, temperature, voltage. If the first pairing fails, please pair again within 2 minutes (first install the sensor and then click the pair button on the page).

Each sensor has an independent ID code. Use the same method to pair the sensors of the other tires. The position where the setting is completed will display the value of each sensor.

Note: The App interface will be updated from time to time, please refer to the App Instructions

Common problem:

Q: Sensor data is not displayed on the phone.

A: It may be that the sensor is out of power, replace the battery model: CS1632).

Q: How to pair the newly purchased sensor?

A: Install the new sensor directly on the air nozzle, click on the main interface of the mobile phone and click pairing, it will automatically search for pairing.

Documents / Resources



[WISTEK B6T Bluetooth Tire Pressure Monitoring System](#) [pdf] User Manual
B6T Bluetooth Tire Pressure Monitoring System, B6T, Bluetooth Tire Pressure Monitoring System, Tire Pressure Monitoring System, Pressure Monitoring System, Monitoring System, System

References

- [User Manual](#)