

wishhub **C Tag Smart Tracker**



Wishhub C Tag Smart Tracker User Manual

[Home](#) » [Wishhub](#) » Wishhub C Tag Smart Tracker User Manual 

Contents

- [1 Wishhub C Tag Smart Tracker](#)
- [2 Specifications](#)
- [3 Usage Instructions](#)
- [4 DIMENSION](#)
- [5 Brief description](#)
- [6 Main function](#)
- [7 How to connect products?](#)
- [8 FCC STATEMENT](#)
- [9 FAQ](#)
- [10 Documents / Resources](#)
 - [10.1 References](#)



Wishhub C Tag Smart Tracker



Specifications

- **Product Name:** Smart Tracker
- **Dimensions:** 5 cm x 8 cm
- **Compliance:** FCC Part 15
- **Product model:** C Tag
- **Battery parameters:** 3.7V- 100mAh
- **Wireless charging voltage:** DC-5V
- **Wireless charging current:** 80mA
- **Bluetooth version:** 5.2
- **Supported system:** iOS

Product Information:

The Smart Tracker is a compact and versatile device designed to help you track and locate your belongings with ease. With its small dimensions of 5 cm x 8 cm, it can be easily attached to various items for tracking purposes.

Usage Instructions

- **Activation:**

Before using the Smart Tracker, ensure it is fully charged. Press and hold the power button until the indicator light turns on.

- **Pairing with Smartphone:**

Download the companion app on your smartphone and follow the on-screen instructions to pair the Smart Tracker via Bluetooth.

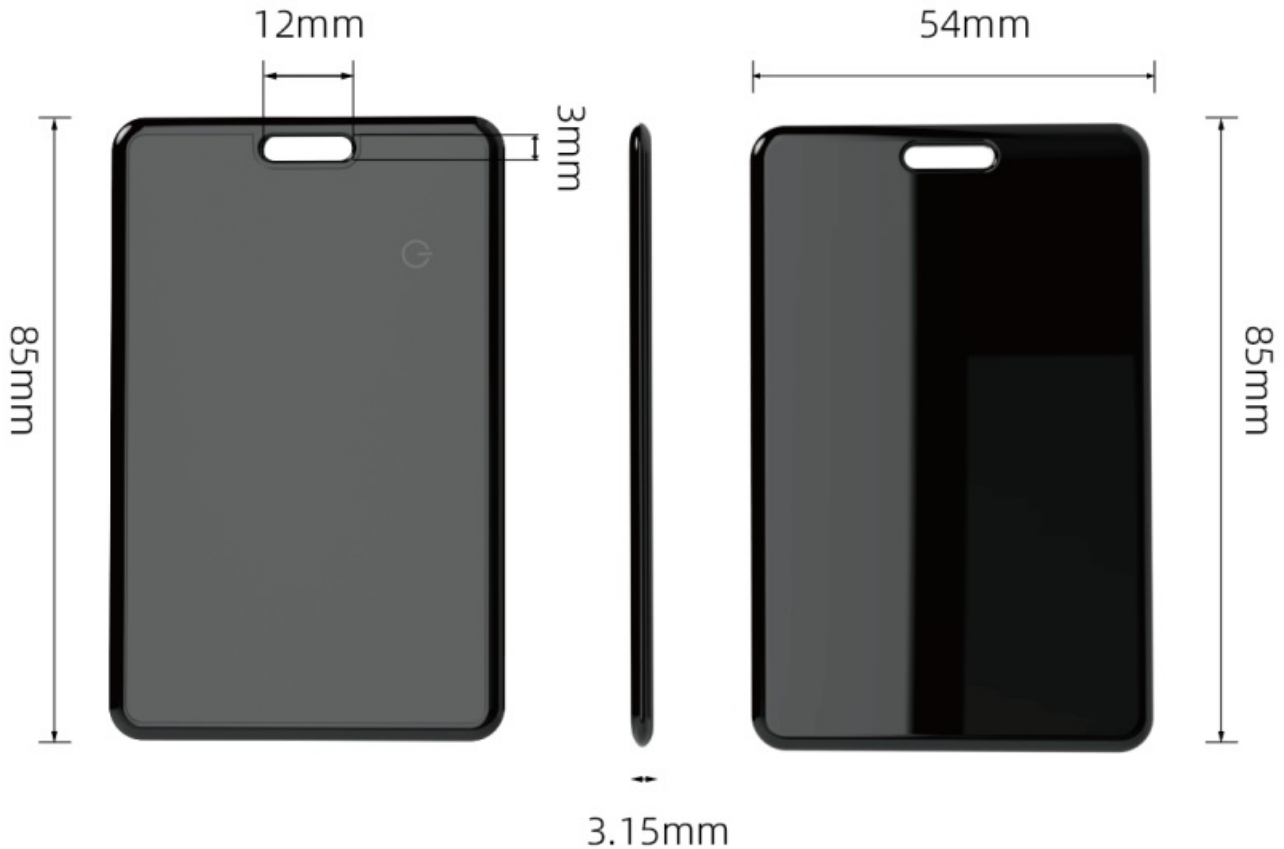
- **Tracking:**

To track your belongings, open the app and select the Smart Tracker from the list of connected devices. The app will show you the last known location of the tracker.

- **Battery Charging:**

When the battery is low, connect the Smart Tracker to a power source using the provided charging cable. Allow it to charge fully before use.

DIMENSION



Brief description

1. Open the locator and pair

Click the switch to hear the drop sound to open, and the bell rings to indicate that the power is powered on.

2. Pair devices

1. Open the Find APP.
2. Hold the locator near your iPhone or iPad, click the "Device" option, click +, then click Add Other Items, search to "C Ta,g" and click Connect.
3. Enter a name for your device and choose an emoji.
4. Click "Agree" to confirm that this item will be linked to your Apple I.D. Complete the pairing.

3. Enable the lost mode

1. Open the "Find" APP, tap the "Items" option, and then tap the items.
2. In Lost Mode, tap Enable.
3. Read the instructions, click "Continue," and enter the phone number or electronic email address.
4. After confirming the information, customize the lost information and tap to activate itinstall.

4. Remove the device

1. Open the "Find" APP, click the "Items" option, and then click Item.
2. Tap Remove Item, and then tap Remove to unbind the bond.

Note: After removing the device from the app, you can open it if you want to pair. The “Find” APP is completed in 10 minutes. If you don’t succeed within 10 minutes, paired devices exit the paired state, and devices and applications cannot be paired at this time.

If you need to repair your device, click the power button again. After hearing the startup ring, the device enters the pairing state. Apply repair.

Main function

Locate your items

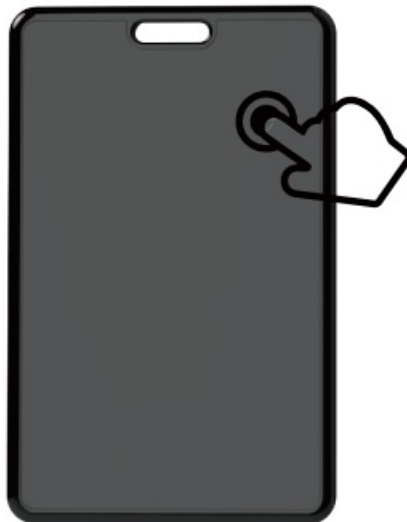
If your lost item isn’t nearby, the Find APP will still work. To help you find it with the “Find” network, there are hundreds of millions of iPhones, iPads, and Macs. Nearby installation: Ready to securely send your missing location device to iCloud, and then you can see where it is in the Find APP. It’s all encrypted anonymously. To protect everyone’s privacy.

Play the sound

1. Open the “Find” APP, tap the “Items” option, and then tap the items.
2. Click Play Sound, the device will beep, so you can find it easier.

How to connect products?

1. Click the power button



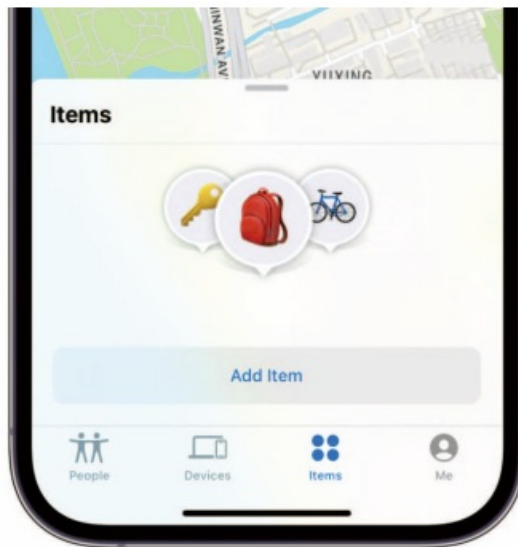
2. Emit a beep to indicate that the device is powered on



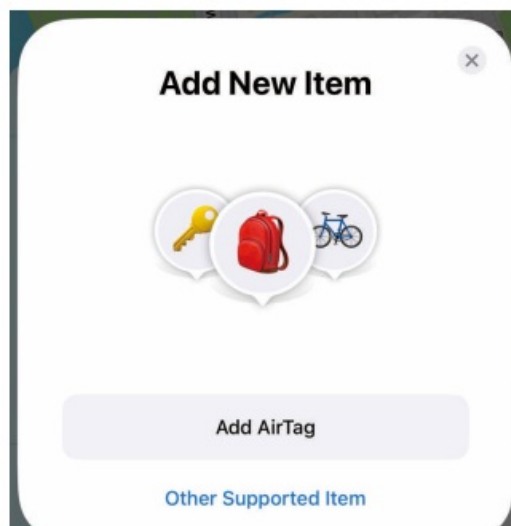
3. Open the Find APP



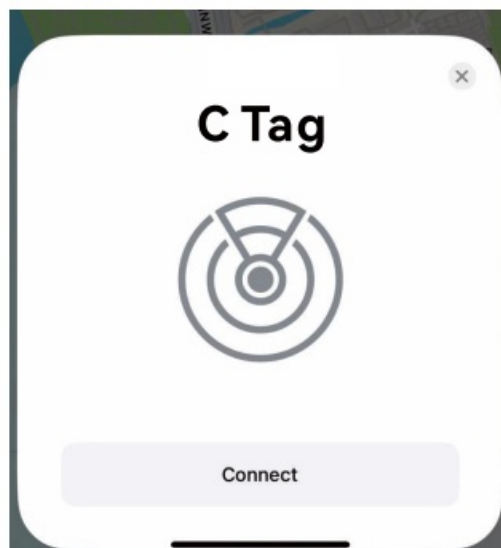
4. Added items



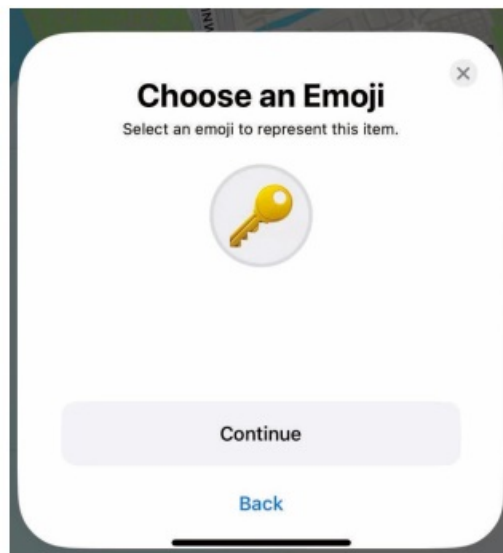
5. Add other supported items



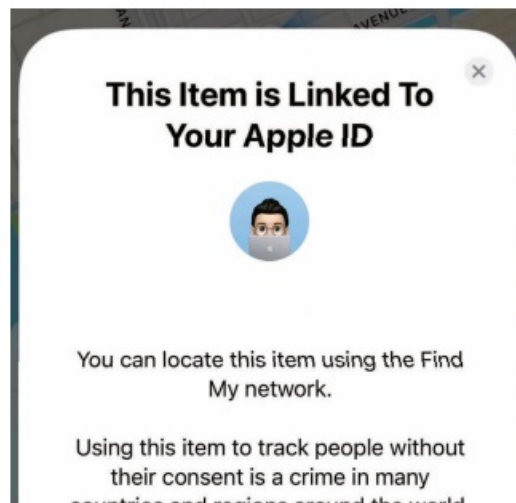
6. Click C Tag to pair



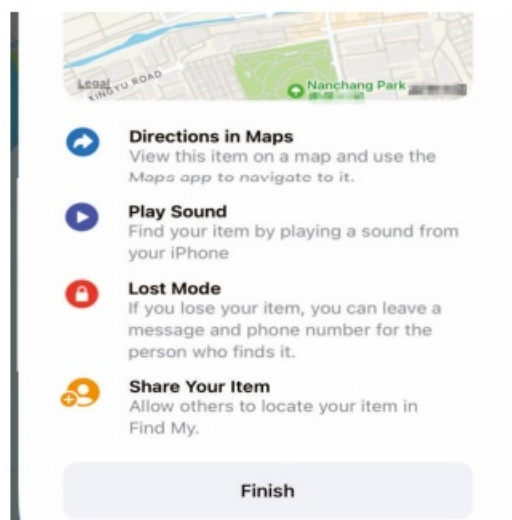
7. Select the Add icon



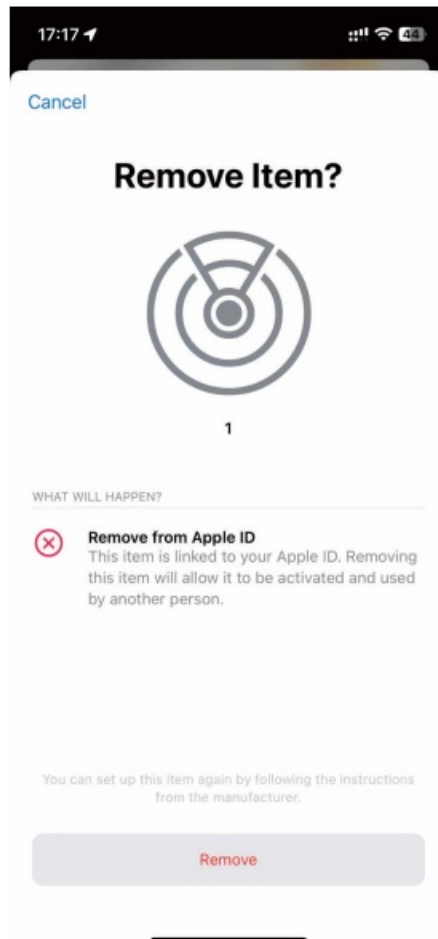
8. Click Agree to bind



9. Pairing is complete



Tips: If you need to change the tie, please change the tie. Remove the device before to avoid revealing your privacy.



FCC STATEMENT

Caution

This device complies with part 15 of the FCC Rules.

Operation is subject to the following two conditions:

1. This device may not cause harmful interference, and
2. This device must accept any interference received, including interference that may cause undesired operation.

Any changes or modifications not expressly approved by the party responsible for compliance could void the user's authority to operate the equipment.

NOTE: This equipment has been tested and found to comply with the limits for a Class B digital device, pursuant to Part 15 of the FCC Rules.

These limits are designed to provide reasonable protection against harmful interference in a residential installation. This equipment generates, uses and can radiate radio frequency energy and, if not installed and used in accordance with the instructions, may cause harmful interference to radio communications. However, there is no guarantee that interference will not occur in a particular installation. If this equipment does cause harmful interference to radio or television reception, which can be determined by turning the equipment off and on, the user is encouraged to try to correct the interference by one or more of the following measures:

- Reorient or relocate the receiving antenna.
- Increase the separation between the equipment and receiver.

- Connect the equipment into an outlet on a circuit different from that to which the receiver is connected.
- Consult the dealer or an experienced radio/TV technician for help.

The device has been evaluated to meet general RF exposure requirement. The device can be used in portable exposure condition without restriction.

FAQ

Q: How long does the battery last on the Smart Tracker?

A: The battery life of the Smart Tracker depends on usage but typically lasts up to 7 days on a full charge.

Q: Can I use the Smart Tracker outdoors?

A: Yes, the Smart Tracker is suitable for both indoor and outdoor use, providing real-time tracking of your belongings.

Documents / Resources



[Wishhub C Tag Smart Tracker](#) [pdf] User Manual
C Tag Smart Tracker, C Tag, Smart Tracker, Tracker

References

- [User Manual](#)

[Manuals+](#), [Privacy Policy](#)

This website is an independent publication and is neither affiliated with nor endorsed by any of the trademark owners. The "Bluetooth®" word mark and logos are registered trademarks owned by Bluetooth SIG, Inc. The "Wi-Fi®" word mark and logos are registered trademarks owned by the Wi-Fi Alliance. Any use of these marks on this website does not imply any affiliation with or endorsement.