



Wisezec Intelligent Technology V2-VN-DB02 IP Camera User Guide

[Home](#) » [Wisezec Intelligent Technology](#) » Wisezec Intelligent Technology V2-VN-DB02 IP Camera User Guide 

Contents

[1 Wisezec Intelligent Technology V2-VN-DB02 IP Camera User Guide](#)

- [1.1 Camera Structure](#)
- [1.2 Warning](#)
- [1.3 Accessories](#)
- [1.4 Battery Charging](#)
- [1.5 LED Indicator Information](#)
- [1.6 Download App](#)
- [1.7 Wi-Fi Set Up](#)
- [1.8 Run A Test](#)
- [1.9 Installation Guide](#)
- [1.10 Share Your Device](#)
- [1.11 Technical Specifications](#)
- [1.12 Frequently Asked Questions](#)

[2 Documents / Resources](#)

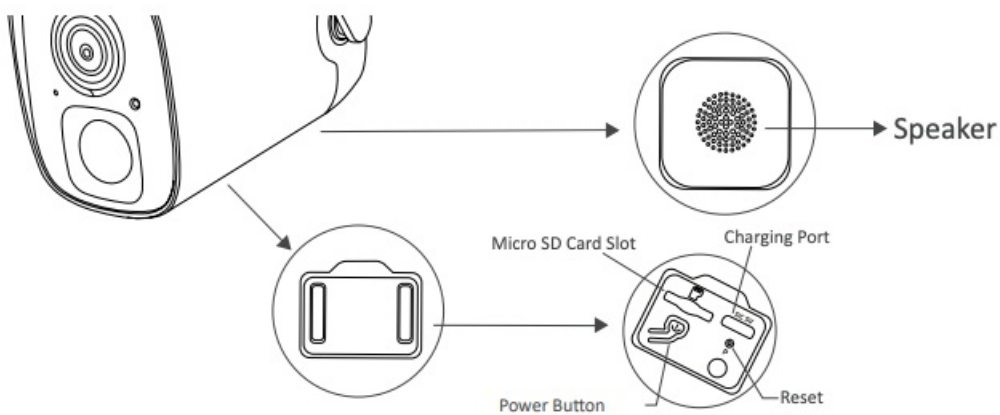
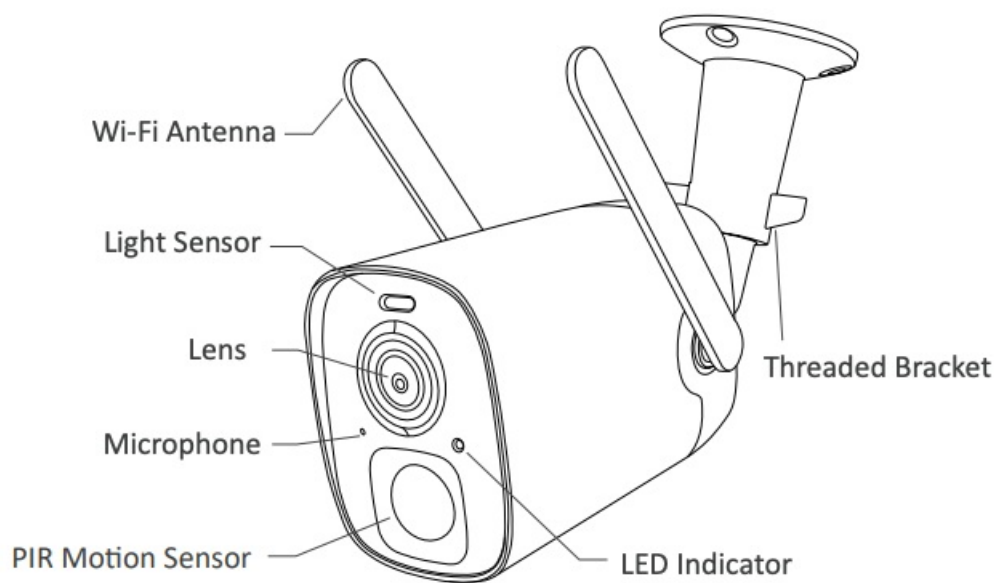
[3 Related Posts](#)

Wisezec Intelligent Technology V2-VN-DB02 IP Camera User Guide



100% Wire-free & With Ai-powered Event Detection

Camera Structure



Smart Battery Cam comes with a built-in card slot which supports up to 128GB Micro SD card.

Step 1: Make sure your smart battery camera, Turn off the power and pull the silicone cover open

Step 2: Open the silicone cover and insert the Micro SD card. Always insert the memory card in the direction indicated by the memory card.

Step 3: Finally push the silicone cover back.

Warning

This equipment has been tested and found to comply with the limits for a Class B digital device, pursuant to Part 15 of the FCC Rules. These limits are designed to provide reasonable protection against harmful interference when the equipment is operated in a commercial environment. This equipment generates uses and can radiate radio frequency energy, if not installed and used in accordance with the instructions, may cause harmful interference to radio communications.

The antennas used for this transmitter must be installed to provide a separation distance of at least 20 cm from all persons and must not be co-located for operating in conjunction with any other antenna or transmitter.

FCC(USA) 15.9 prohibition against eavesdropping except for the operations of law enforcement officers conducted under lawful authority, no person shall use, either directly or indirectly, advice operated pursuant to the provision of this part for the purpose of overhearing or recording the private conversations of other unless such use is authorized by all of the parties engaging

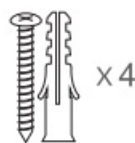
Accessories



Ejector Pin



USB Cable



Screws
Anchors



Quick Guide



Threaded Bracket
Drilling template

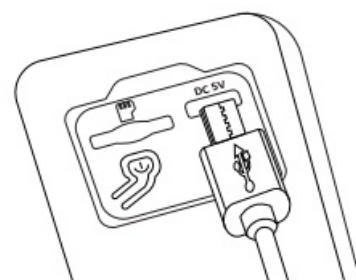


Smart Battery Cam

Battery Charging

The batteries inside the camera are not fully charged according to the transportation safety regulations. Please charge the batteries with a USB Cable (5V adapter not included).

The LED Indicator will be in solid yellow when charging, and will turn to solid green when it is fully charged. It takes about 8-10 hours to fully charge your camera.



LED Indicator Information

To turn on the camera:

Press the Power Button on the bottom of the camera to turn it on. Then the LED Indicator in the front of the camera will be solid blue.

To turn off the camera:

Press the Power Button on the bottom of the camera to turn it off. Then the LED Indicator in the front of the camera will be off.

LED Indicator	Description
Solid Blue	Working
None	Sleep/Power Off
Solid Yellow	Charging
Solid Green	Charging Finished

Download App

Download Vicohome App from APP Store or Google Play. You can also download the App by scanning the QR code above with the QR code scanner in your smart phone.



Wi-Fi Set Up

Before you start the Wi-Fi configuration, please note below:

1. The Battery camera works with 2.4 GHz Wi-Fi, but not with 5 GHz Wi-Fi.
2. Avoid using special characters or symbols like (@~!#\$%^&*...), in your Wi-Fi name or password.
3. Perform the configuration near your Wi-Fi router. Launch the “Vicohome” APP and register an account with your mobile phone number or email ID

Run A Test

After setup, tap on the live view window in the app for a test. Then take your Battery camera outside to the installation spot and run a test there. Make sure the installation spot is covered by strong 2.4 GHz Wi-Fi signal. If the battery camera doesn't work well outside, you may need to move the router closer to the installation spot or invest in a Wi-Fi extender.

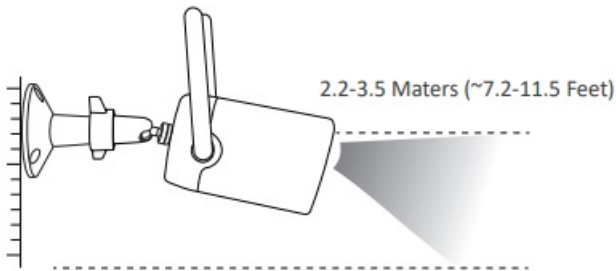
Installation Guide

You can choose Threaded Bracket installation.

Check the following things before you drill holes on your wall: This camera has been successfully added to your Vicohome App and is able to stream video.

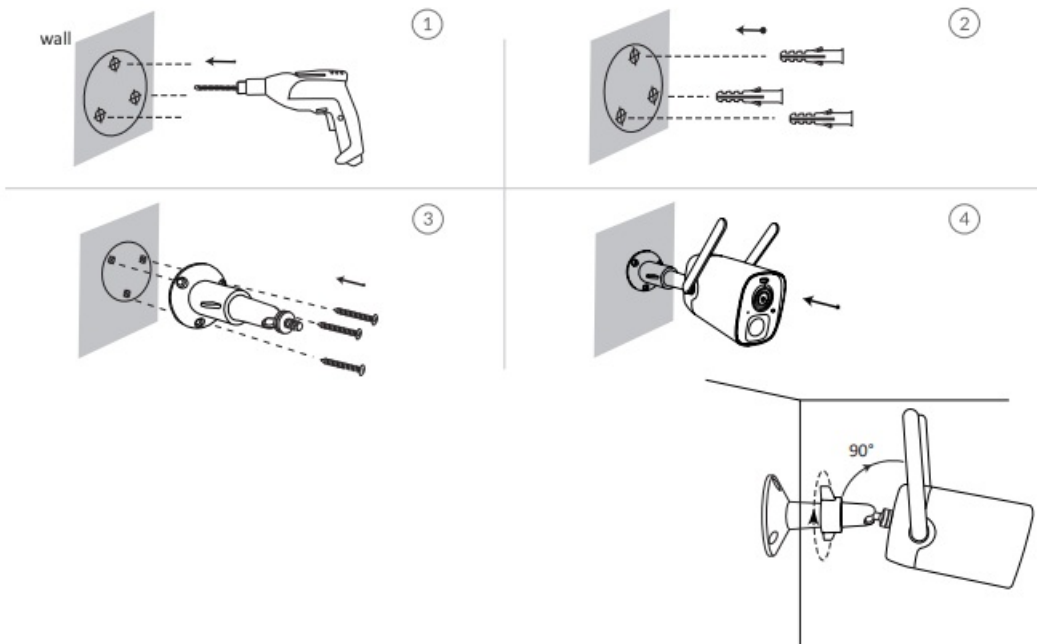
Find a good installation spot.

- Height of installation from the ground is suggested around 2.2-3.5M (~7.2-11.5 Feet)
- PIR (motion sensor) setting for lighting on/off automatically is around 10M (30 Feet).
- Make sure the camera's sight is not blocked.



Bracket Installation Method

1. Use the provided drilling template to mark the position of holes on your wall. Use drill bit(15/64",6mm) to drill three holes.
2. Install anchors to fix the screws.
3. Install the Threaded Bracket on your wall with the screws provided.
4. Rotate the camera clockwise to install it on the Threaded Bracket.



Rotate nut on the bracket counter clockwise to loosen and adjust the camera angle to cover the surveillance area. Tighten the thread bracket clockwise. Make sure the camera is within Wi-Fi range.

Share Your Device

Steps: Run Vicohome App >> Home >> ➡ >> share >> Camera sharing >> Use mobile device to scan the QR code, sharing success.

Technical Specifications

Video & Audio	
Image Sensor	1/2.9" color CMOS Sensor
Image Resolution	1920 × 1080 px
Lens	2.8mm(3MP), F2.0, Angle of view:110°
Minimum Illumination	0.01 Lux
Video Compression	H.264/H.265
Audio Input/Output	2-way audio with noise cancellation
Audio Compression	AAC
Network	
Wireless Network	2.4G Wi-Fi (IEEE802.11b/g/n), built-in antenna(3dB)
Supportable Protocol	TCP/IP, UDP/IP, DHCP, RTMP, MUDP
Supportable IP Address	Dynamic IP address supported
Storage	
Storage Type	Micro SD Card(Max 128G)
Cloud storage	Support
Recording	Triggered by PIR motion sensor
Wake-up	PIR body induction wake-up, and remote positive wake-up
Alarm	Alarm push by mobile APP and alarm sound
AI	Human contour detection, activity zone, intelligent push, pet snapshot,Package inspection

Software	
App Name	Vicohome
system	IOS,Android
Power Consumption	
Battery Capacity	9600mAh
Standby Power Consumption	1.68mW (4V 0.42mA)
Power Consumption of The Daytime Operation	0.88W (4V 220mA)
Power Consumption of Operation at Night	2.20W (4V 550mA)
Battery Life	6 months (provided that 20 10s videos are recorded per day)
Standby Time	1 year
General	
Battery Charging	DC 5V 1A-2A(Micro USB Port)
Dustproof and waterproof	IP65
Operating Environment	-10° ~ 45°C /10% ~ 80% (no condensation)
Storage Environment	-20°C ~ 60° /0% ~ 90% (no condensation)
Size	117mm × 74mm × 75mm(without bracket)
Weight	0.318KG

Frequently Asked Questions

Q1: Why doesn't the Wi-Fi name appear when I connect to Wi-Fi ?

A1: You need to turn on the “ location permission ” for the app in the system settings and change it to “ allow when using ”.

Q2: Will the camera show red lights when night vision is activated ?

A2: The built-in infrared lamp beads make the camera only show some dim red lights when night vision is activated, but the image quality is still clear under no light environment.

Q3: What are the requirements for Wi-Fi ?

A3: Please use a 2.4GHz wireless network. The device does not support the 5GHz wireless network. Meanwhile, please set the Wi-Fi authentication method to wpa2-psk or other low level of security method. A password is required.

Q4: How far should the camera be placed from the router ?

A4: After testing, the Wi-Fi connection distance can normally reach up to 100 meters in the open area. However, the actual situation depends on the strength of Wi-Fi and its surrounding environment.

Q5: What is the maximum length of recording time ?

A5: You can select the recording time in the application or “automatic” mode, recording time depending on the person. This device records The maximum length of the video is 20 seconds.

Q6: How to invite family and friends to use my camera together?

A6: Please refer to the guiding steps on page 8 of this user guide.

Q7: Whether the device has cloud storage ?

A7: Cloud storage is free of charge for 30 days after the successful addition of the device, . After 30 days, you will be charged. The specific cost is explained in the APP.

Q6: What should I do when the device is in malfunction ?

A6: Long press the power button to restart the camera. In the case of a stuck machine, use a pointed object to press the reset button to force the device to restart and initialize the factory settings

Federal Communications Commission (FCC) Statement

This device complies with part 15 of the FCC Rules. Operation is subject to the following two conditions: (1) This device may not cause harmful interference, and (2) this device must accept any interference received, including interference that may cause undesired operation. Note: This equipment has been tested and found to comply with the limits for a Class B digital device, pursuant to part 15 of the FCC Rules. These limits are designed to provide reasonable protection against harmful interference in a residential installation. This equipment generates, uses and can radiate radio frequency energy and, if not installed and used in accordance with the instructions, may cause harmful interference to radio communications. However, there is no guarantee that interference will not occur in a particular installation. If this equipment does cause harmful interference to radio or television reception, which can be determined by turning the equipment off and on, the user is encouraged to try to correct the interference by one or more of the following measures:

- Reorient or relocate the receiving antenna.
- Increase the separation between the equipment and receiver.
- Connect the equipment into an outlet on a circuit different from that to which the receiver is connected.
- Consult the dealer or an experienced radio/TV technician for help.


Warning: Changes or modifications made to this device not expressly approved by **Wisezec Intelligent Technology Co., Ltd** may void the FCC authorization to operate this device.

Note: The manufacturer is not responsible for any radio or TV interference caused by unauthorized modifications to this equipment. Such modifications could void the user’s authority to operate the equipment.

RF exposure statement:

The transmitter must not be colocated or operated in conjunction with any other antenna or transmitter. This equipment complies with the FCC RF radiation exposure limits set forth for an uncontrolled environment. This equipment should be installed and operated with a Minimum distance of 20cm between the radiator and any part of your body.

Documents / Resources

 The image shows the cover of a 'Quick Start Guide' for a 'SMART SECURITY CAM'. It features a small photograph of the camera device and some text at the bottom.	<p>Wisezec Intelligent Technology V2-VN-DB02 IP Camera [pdf] User Guide</p> <p>V2-VN-DB02, V2VNDB02, 2AY58-V2-VN-DB02, 2AY58V2VNDB02, V2-VN-DB02 IP Camera, I P Camera, Camera</p>
---	--