



Wisezec Intelligent Technology V1-VN-DB01 IP Camera User Guide

[Home](#) » [Wisezec Intelligent Technology](#) » Wisezec Intelligent Technology V1-VN-DB01 IP Camera User Guide 

Wisezec Intelligent Technology V1-VN-DB01 IP Camera User Guide



Thanks for purchasing and using our product. Please read this quick start guide before using it, and keep it for future reference.



Manual contents are subject to change without notice in accordance with our policy of continuous product improvement.

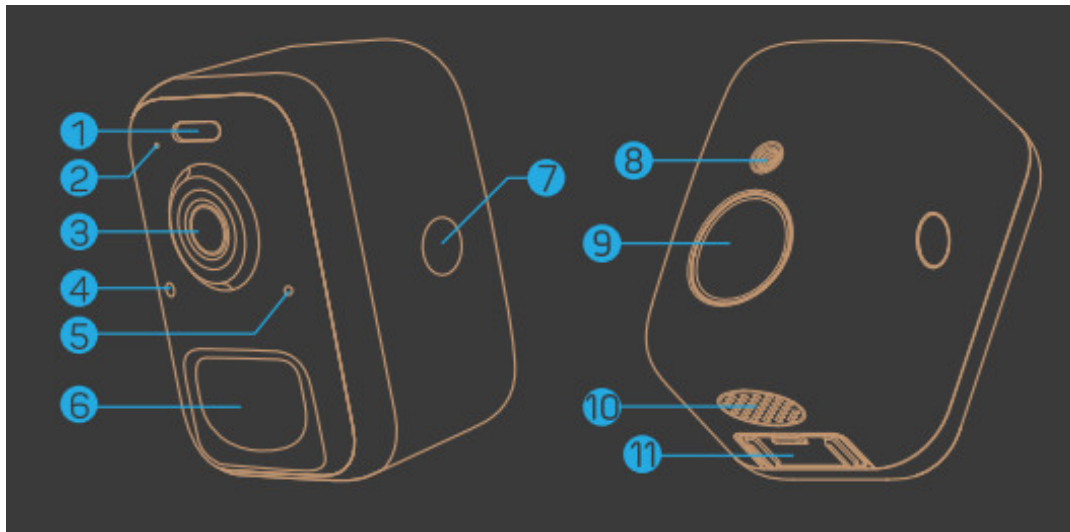
Contents

- [1 WHAT'S IN THE BOX](#)
- [2 CAMERA DIAGRAM](#)
- [3 BATTERY CHARGING](#)
- [4 DOWNLOAD THE APP](#)
- [5 WI-FI SET UP](#)
- [6 RUN A TEST](#)
- [7 LIVE VIEW INTERFACE](#)
- [8 SHARE YOUR DEVICE](#)
- [9 ALARM SETTING](#)
- [10 INSTALLATION](#)
- [11 TECHNICAL PARAMETERS](#)
- [12 FAQ](#)
- [13 Documents / Resources](#)
- [14 Related Posts](#)

WHAT'S IN THE BOX

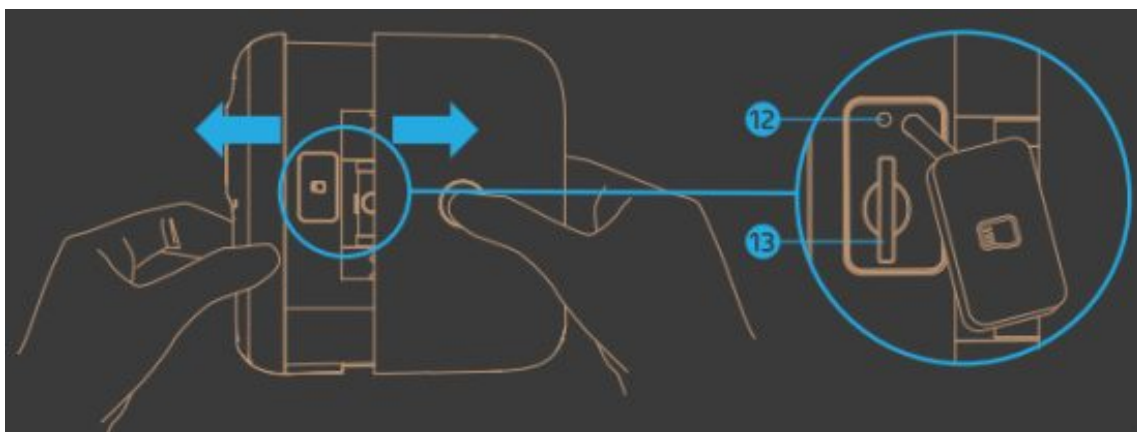


CAMERA DIAGRAM



1. LED Light
2. Microphone
3. 2MP Camera
4. Ambient Light Sensor
5. LED Indicator
6. PIR Motion Sensor

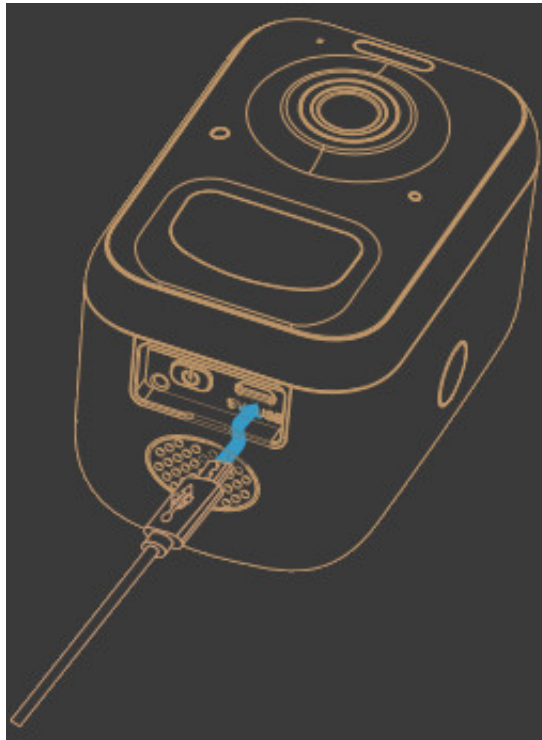
7. Back Shell Open Button
8. Threaded Bracket Interface
9. Strong Magnetic Chuck
10. Speaker
11. Power button & Micro USB Port



12. Reset hole
13. TE-card Slot

BATTERY CHARGING

The batteries inside the Battery camera are not fully charged in accordance with transportation safety regulations. Please charge the batteries with a USB Cable [5V adapter not included], and fully charged for 8-10 hours before



NOTE:

The charging LED will be in solid red when charging, and will turn to solid blue when it is fully charged.

DOWNLOAD THE APP

Download and install the 'Vicohomes app from Google Play™ or the App Store™. The App is also available by scanning the QR codes on the right, using your QR code scanner in your smartphone.

NOTE:

Google Play™ is a trademark of Google Inc. App Store™ is a service mark of Apple Inc



<https://www.vicohome.io/download/>

WI-FI SET UP

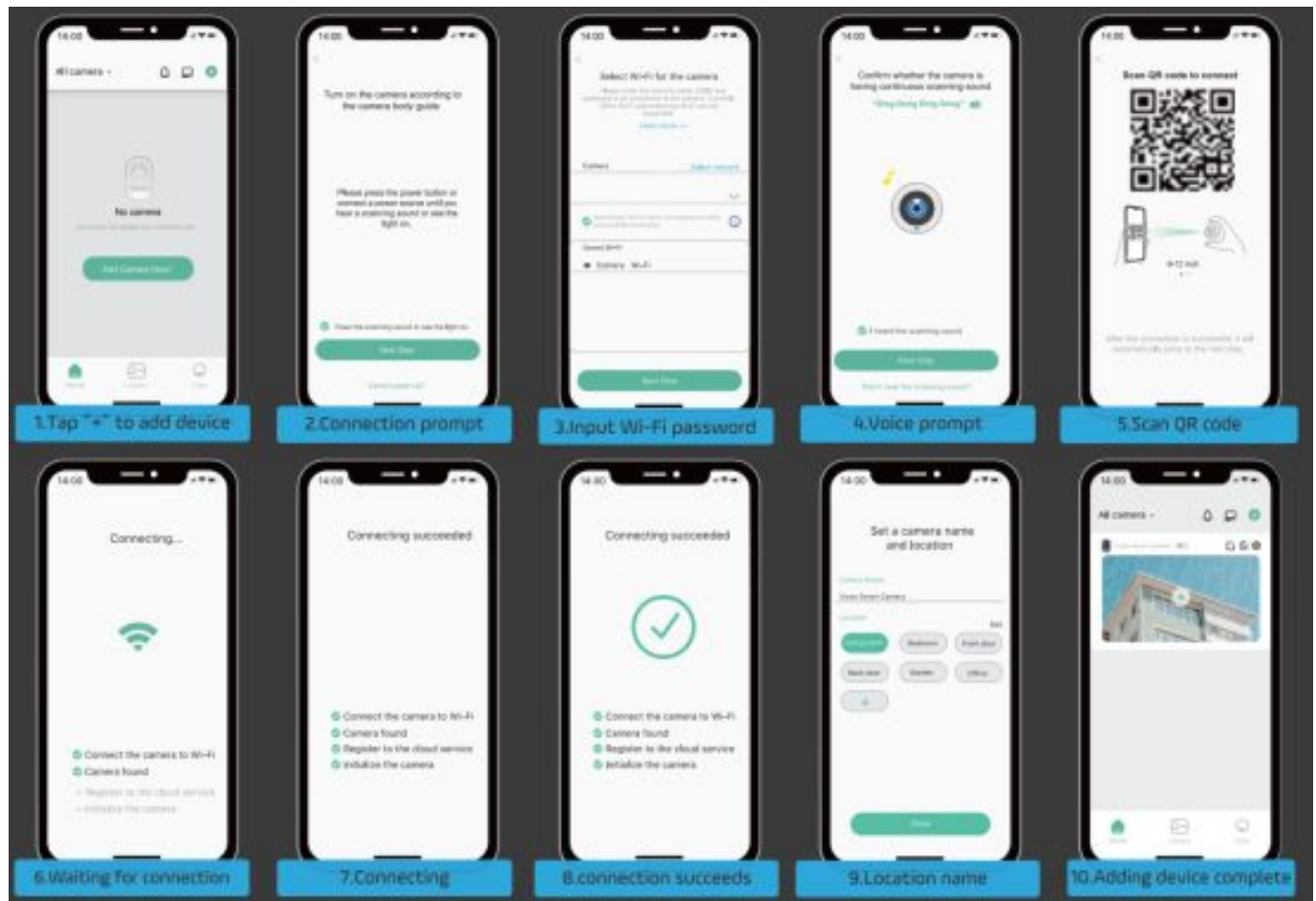
Before you start the Wi-Fi configuration, please note below:

1. The Battery camera works with 2.4 GHz but not with 5 GHz
2. Avoid using special characters or symbols like (©-!#SV0A8,* , in your Wi-Fi name or password.

3. Perform the configuration near your Wi-Fi router.

Launch the "Vicohome" APP and register an account with your mobile phone number or email ID. Start the Wi-Fi configuration, following the in-App instructions or referring to the following guiding steps.

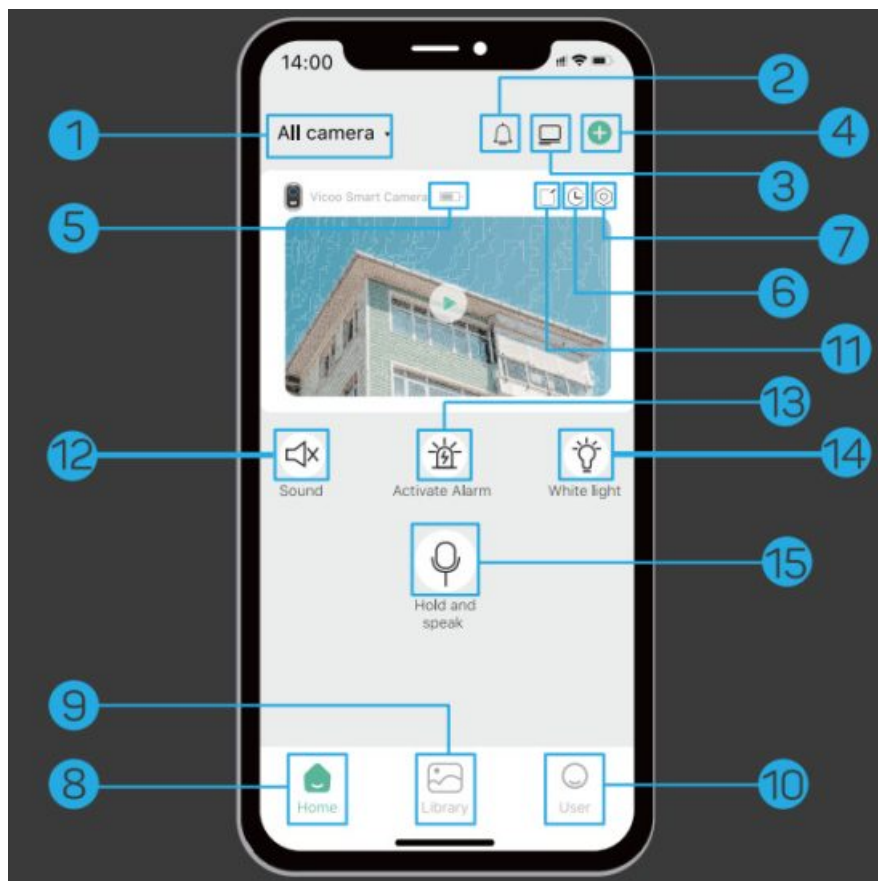
Guiding STEPS:



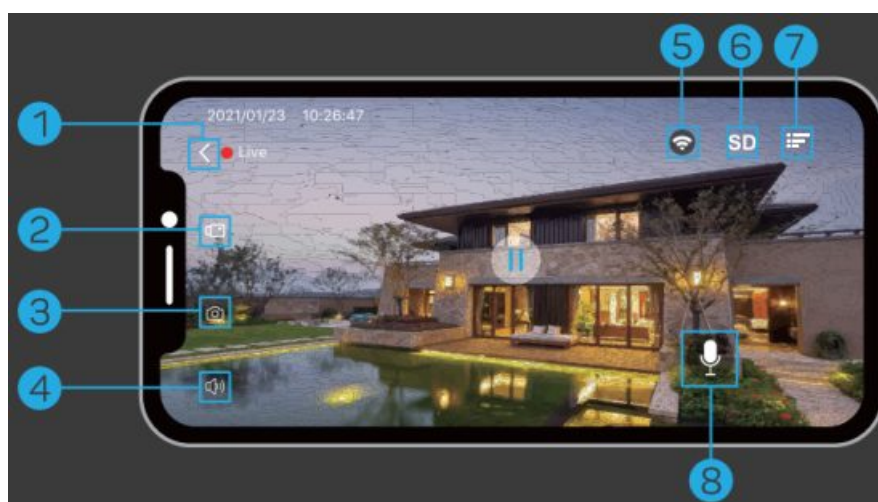
RUN A TEST

After setup, tap on the live view window in the app for a test. Then take your Battery camera outside to the installation spot and run a test there. Make sure the installation spot is covered by a strong 2.4 GHz Wi-Fi signal. If the battery camera doesn't work well outside, you may need to move the router closer to the installation spot or invest in a Wi-Fi extender.

LIVE VIEW INTERFACE



1 Change camera	6 Playback
2 Mute notification	7 Settings
3 Window layout	8 Home page
4 Add new devices	9 Photo gallery
5 Battery status	10 User Info
11 Sharing	12 Sounds
13 Alarm	14 Light
15 Speak	

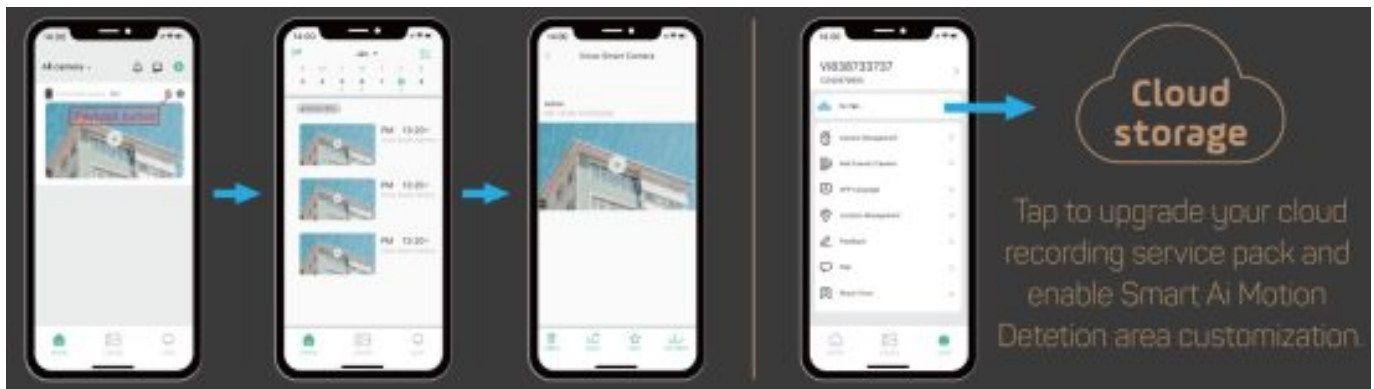


1 Quit Live View	5 WiFi speed
2 Record video	6 SD/HD
3 Screenshot	7 Settings
4 Audio on/off	8 Speak

NOTE: Live viewing will not trigger device recording

PLAYBACK

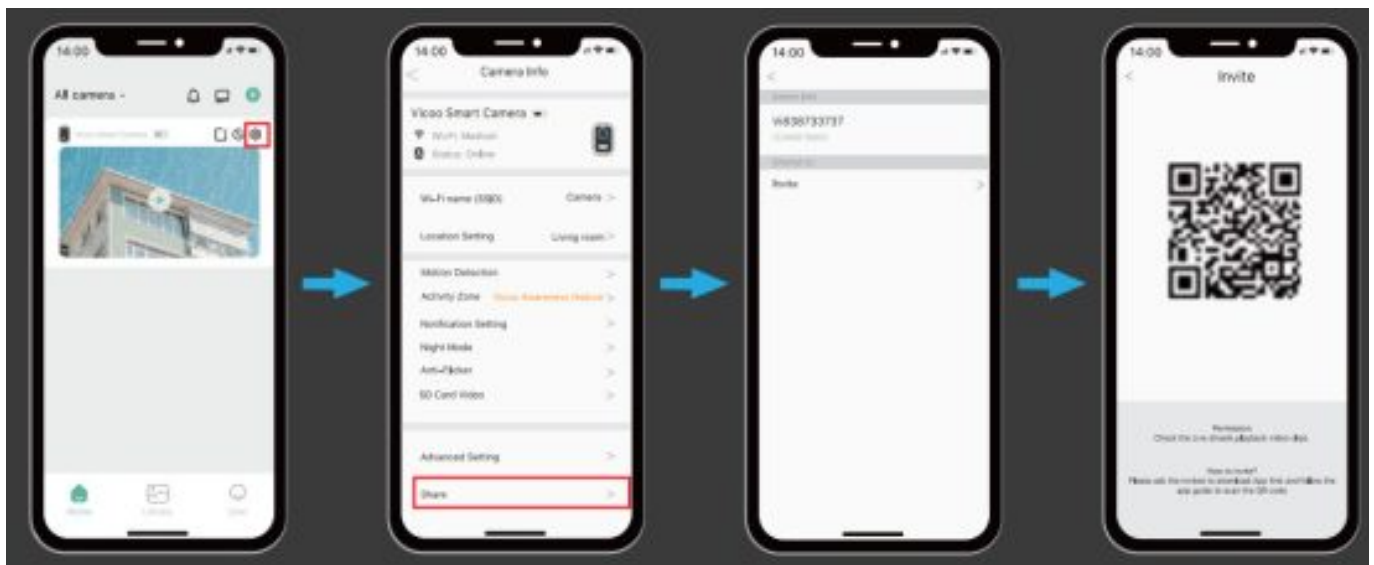
If the Micro-SD card is properly installed, you can playback the video clips taken after motion detection. A 7-days-rolling free cloud storage service is ready for your camera. You can also upgrade your cloud service pack in the settings.



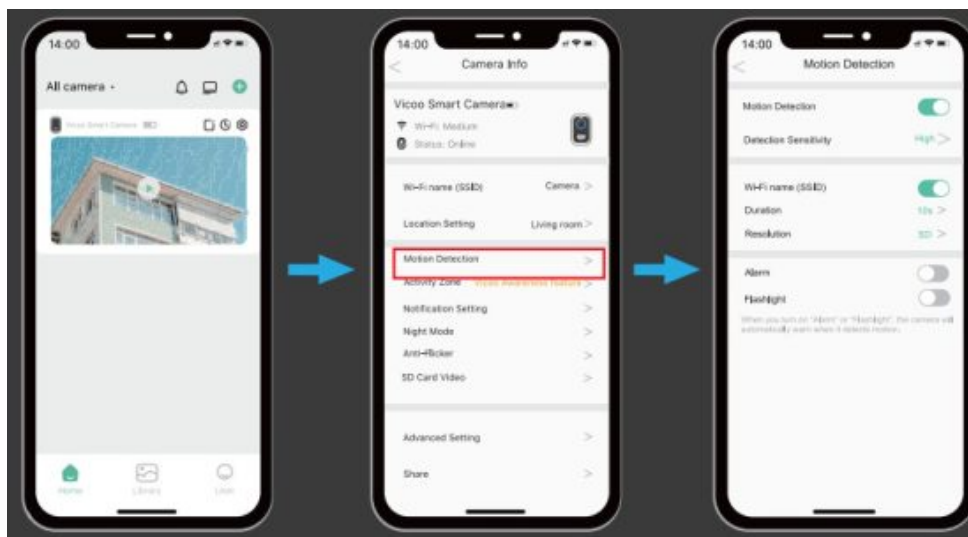
SHARE YOUR DEVICE



Steps: Run Vicohome App » Home »  » Invite » My QR Code » Let the administrator scan your QR Code.

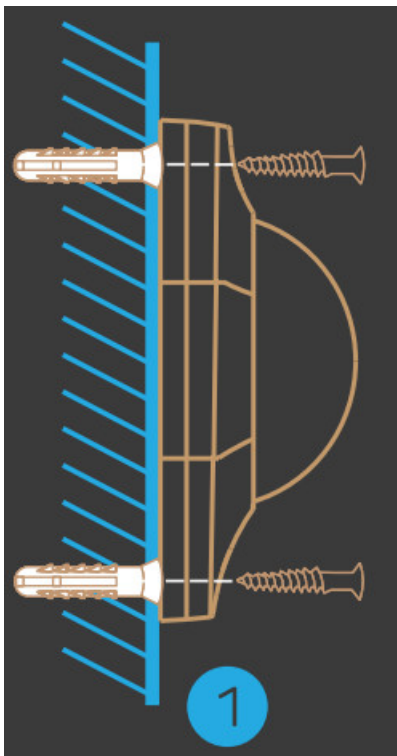
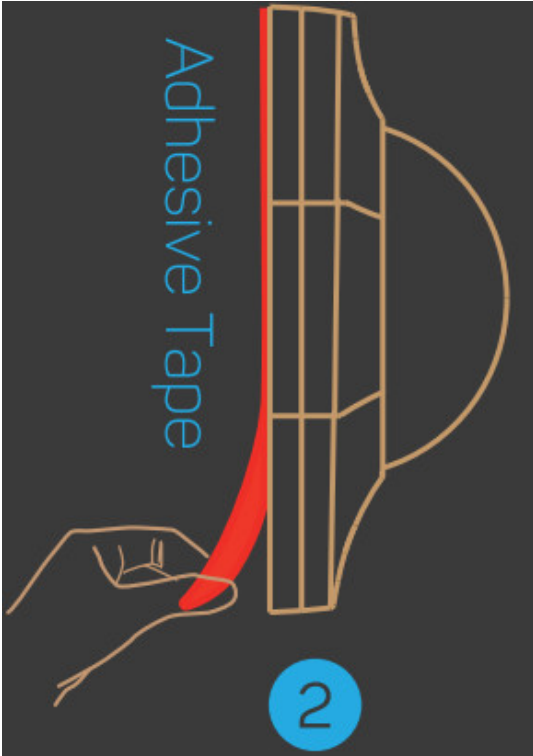
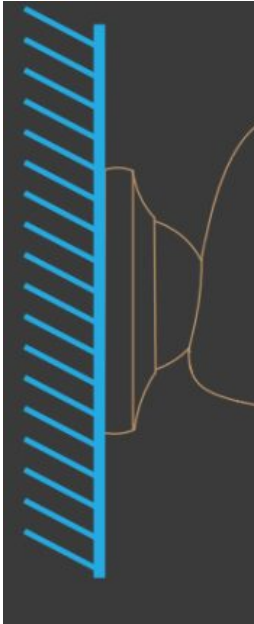


ALARM SETTING



When a motion is detected by your camera, you will receive an alarm notification from the App. You can also enable flashlight alarm and siren alarm to be triggered after motion events. The flashlight alarm and siren alarm can also be triggered manually in the camera settings.

INSTALLATION

		
<p>Nail the screw to the anchors, or directly to the wall until the bracket is fixed to the wall.</p>	<p>You can also use the provided double-sided tape instead of screws to fix the wall mount on a flat surface</p>	<p>Attach the camera to surveillance area. Done.</p>

NOTE:



Vicohome App will remind you to charge your camera when the battery is low. Please charge the camera with the provided Micro USB cable and a DC 5V 15A phone charger. During charging, the camera's LED indicator is in solid yellow, and when the camera is fully charged, the indicator will turn into solid green. It takes about 8-10 hours to fully charge your camera



When you connect your camera through the Vicohome App, it will prompt you if the latest firmware is available. You can also manually check the firmware upgrade in the settings of the App



Please make sure your camera is fully charged or connected to a power source to upgrade the firmware. Do not cut off the power when upgrading the firmware

TECHNICAL PARAMETERS

Video & Audio	
Image Sensor	1/3" CMOS (2.0MP)
Resolution	Hi 3518E V300
Image Sensor	1920 x 1080 px
Stream	HD/SD dual-stream
Infrared LED	High power IR LED with ICR
Lense	2 8mm/F2 0
Angle of view	110°
Miu illumin	Color.0.01Lux;B&W.0.01LUX
Audio	2-way audio with noise cancellation
Storage	
Storage Type	Micro SD Card(Max 128G)
Cloud storage	Support
Recording	Triggered by PIR motion sensor

Network	
Wi-Fi Frequency	2.4 GHz ~ 2.4835 GHz
Standards	IEEE 802.11 b/g/n
Live View Speed	Within 3 ~ 4 Sec
Software	
App Name	VicoHome
System	IOS, Android
Remote View	within 2 ~ 4 Sec
Notification	Push notification within 2 4 sec
General	
Standby Current	300μA
Working Current(day)	25DmA
Working Current(day)	510mA
Battery life(full charge)	2 ~ 3Months

General	
Battery Charging	DOW 1A-2A (Micro USB Port)
Firmware Upgrade	OTA(Over-the-Air)
Dimension(mm)	721mm x 633mm x 974mm
Weight (KG)	0.35 KG
Working Temp: Humidity	-20 C-SOC; <90%(No condensation)
Power Source	Lithium 21700 (3.7V 4800 Battery mAh) x 2
Bracket Data	
Weight (KG)	0.08KG
Dimension (mm)	86mm x 56mm x 28mm

FAQ

Q1: How to invite family and friends to use my camera together?

A1 Please refer to the guiding steps on page 7 of this user guide.

Q2: Why doesn't the Wi-Fi name appear when I connect to Wi-Fi?

A2: On Apple devices with iOS13 and above, you need to turn on the "location permission" for the app in the system settings and change it to "allow when using."

Q3: Will the camera show red lights when night vision is activated?

A3 The built-in infrared lamp beads make the camera only show some dim red lights when night vision is activated, but the image quality is still clear under no light environment.

Q4: What are the requirements for Wi-Fi?

A4 Please use a 2.4GHz wireless network. The device does not support the 5GHz wireless network. Meanwhile, please set the Wi-Fi authentication method to wpa2-psk or other lower level of the security method. A password is required.

Q5: How far should the camera be placed from the router?

A5: After testing, the Wi-Fi connection distance can normally reach up to 150 meters in the open area. However, the actual situation depends on the strength of Wi-Fi and its surrounding environment.

Q6: What is the maximum length of recording time?

A6 You can choose the recording time in the app. The camera can record for a fixed time or “auto” mode, which depends on whether there is a person. The maximum length of a video is 3 minutes.

Q7: How to quickly view videos by category?

7A: Click the icon in the upper left corner of the “Library” page to start the search filters. Select the search settings and then click save to view the video playback.

Q8: What should I do when the device is in malfunctions?

A8: Long press the power button to restart the camera. If there is no response, you can open the back shell of the camera, and then open the rubber plug on the side then press the reset button with a pointed object to force the power off, then long-press the power button to restart the camera.

FCC statement

This device complies with Part 15 of the FCC rules. Operation is subject to the following two conditions: 1) this device may not cause harmful interference, and 2) this device must accept any interference received, including interference that may cause undesired operation.

Note: This equipment has been tested and found to comply with the limits for a Class B digital device, pursuant to part 15 of the FCC Rules. These limits are designed to provide reasonable protection against harmful interference in a residential installation.

This equipment generates uses and can radiate radio frequency energy and, if not installed and used in accordance with the instructions, may cause harmful interference to radio communications. However, there is no guarantee that interference will not occur in a particular installation. If this equipment does cause harmful interference to radio or television reception, which can be determined by turning the equipment off and on, the user is encouraged to try to correct the

interference by one or more of the following measures:

- Reorient or relocate the receiving antenna.
- Increase the separation between the equipment and receiver.
- Connect the equipment into an outlet on a circuit different from that to which the receiver is connected.
- Consult the dealer or an experienced radio/TV technician for help.

Changes or modifications not expressly approved by the party responsible for compliance could void the user's authority to operate the equipment.

FCC Radiation Exposure Statement

This device complies with FCC RF radiation exposure limits set forth for an uncontrolled environment. This transmitter must not be co-located or operating in conjunction with any other antenna or transmitter.

This device must operate with a minimum distance of 20 cm between the radiator and user body.

Documents / Resources



[Wiseztec Intelligent Technology V1-VN-DB01 IP Camera](#) [pdf] User Guide
V1-VN-DB01, V1VND01, 2AY58-V1-VN-DB01, 2AY58V1VND01, V1-VN-DB01 IP Camera, V1-VN-DB01, IP Camera