



---

[Home](#) » [WISDOM](#) » **WISDOM SRS-F\_C-Kit SRS High Output RTL Subwoofer Floor Ceiling Kit**  
**Owner's Manual** 

## WISDOM SRS-F\_C-Kit SRS High Output RTL Subwoofer Floor Ceiling Kit



### **Contents** [hide](#)

- [1 Introduction](#)
- [2 Overview](#)
- [3 Unpacking the SRS F/C Kit \(What's Included\)](#)
- [4 Installing the F/C kit](#)
- [5 Installing Register Box](#)

- 6 Installing F/C Adapter and Collar
- 7 Prepare for Finishing
- 8 Finalizing the Installation
- 9 Customizing Your Installation
- 10 Various Available Register Boots
- 11 North American Warranty
- 12 Obtaining Service
- 13 F/C Kit Dimensions
- 14 Customer Support
- 15 Documents / Resources
- 15.1 References

## **Introduction**

Congratulations on purchasing your Wisdom Audio High Output RTL® subwoofer. The SRS's Regenerative Transmission Line™ technology delivers tremendous bass performance in terms of depth, dynamics, and distortion, resulting in articulate bass that integrates seamlessly with high-resolution main speakers such as Wisdom Audio's Sage and Wisdom Series.

While the SRS addresses the need for a high output subwoofer with minimal size vent opening, its large size can limit placement. Hence, the Floor/Ceiling (F/C) kit option. The SRS F/C kit allows the SRS subwoofer output to be placed in floors, walls, and ceilings, while keeping the enclosure hidden from view.

This manual covers the basic installation of the F/C kit for new construction. It is understood that every installation is unique, and it would be impossible to cover all of the variations in this manual. Therefore, this manual will describe a typical installation with 16" OC joists as an example. It is left to the installer to extrapolate the necessary information for their custom installations. Should you have any questions after reading through the material, please contact a Wisdom Audio sales representative.

We recognize that setting up a Wisdom Audio High Output RTL subwoofer can be a bit more involved than connecting a common sealed or ported subwoofer, which is why we

recommend that our systems be engineered and calibrated by Factory Personnel. Even though your local Wisdom Audio dealer is likely to setup and calibrate the system, we still recommend you briefly review this and the other manuals (SA-DSP Series amplifiers) to understand the system's full capabilities.

## **Overview**

The SRS F/C kit contains a set of components that attach to any one of the four SRS subwoofer ports, permitting the subwoofer output to be extended up to 24" (60cm) from the enclosure's output. The F/C kit can be used where one wants to eliminate the box-in-room subwoofer but still desires Wisdom Audio's world-class bass performance. It can also be used to strategically locate the subwoofer's output where it might not otherwise be practical to locate the subwoofer enclosure. In short, the F/C kit allows the SRS subwoofer to be placed in an adjacent space and to essentially "pipe-in" the low frequency energy.

The SRS F/C kit is supplied with a 12" x 12" HVAC grille and register box. The dimensions can be found in the specifications section of this document. The style and dimensions of the output can be changed to some degree to allow better integration into one's décor.

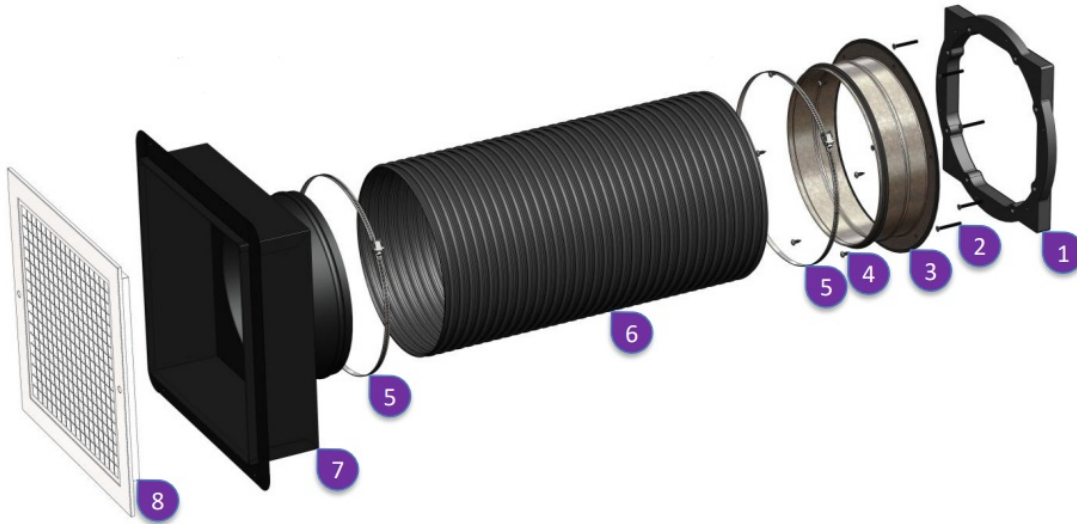
Please inquire with your Wisdom Audio Dealer or Factory Personnel when making modifications.

## **Unpacking the SRS F/C Kit (What's Included)**

**Note:** Save all the components of the F/C kit until you have completed the installation. If you find any missing components, please contact your Wisdom Audio distributor.

1. SRS F/C Adapter
2. SRS Adapter Screws #8-32 x 1-1/2" Flathead (X8)
3. SRS 10" Galvanized Collar
4. SRS Collar Screws #8 x 1/2" (X6)
5. Quick Release Hose Clamp (X2)
6. 10" ID x 24" L Black Semi-Flexible Hose
7. Register Box, 12" x 12" (w/Flathead #6x1" Screws, X8)

## 8. Grille, 12" x 12" (w/Painted #8 Screws, X2)



### Recommended Tools:

- Drill with long #2 Phillips bit
- #2 Phillips screwdriver (optional)
- 1/4" slotted screwdriver
- Bubble level

### Installing the F/C kit

Plan your installation. Read through this and the SRS Owner's Manual to familiarize yourself with the installation process. It is not difficult, but it will require additional materials for securing all the components. These materials are common to the construction industry.

Ensure you have the locations chosen, the speaker cable in place, and that you have sufficient space for the subwoofer enclosure and placement of the register box.

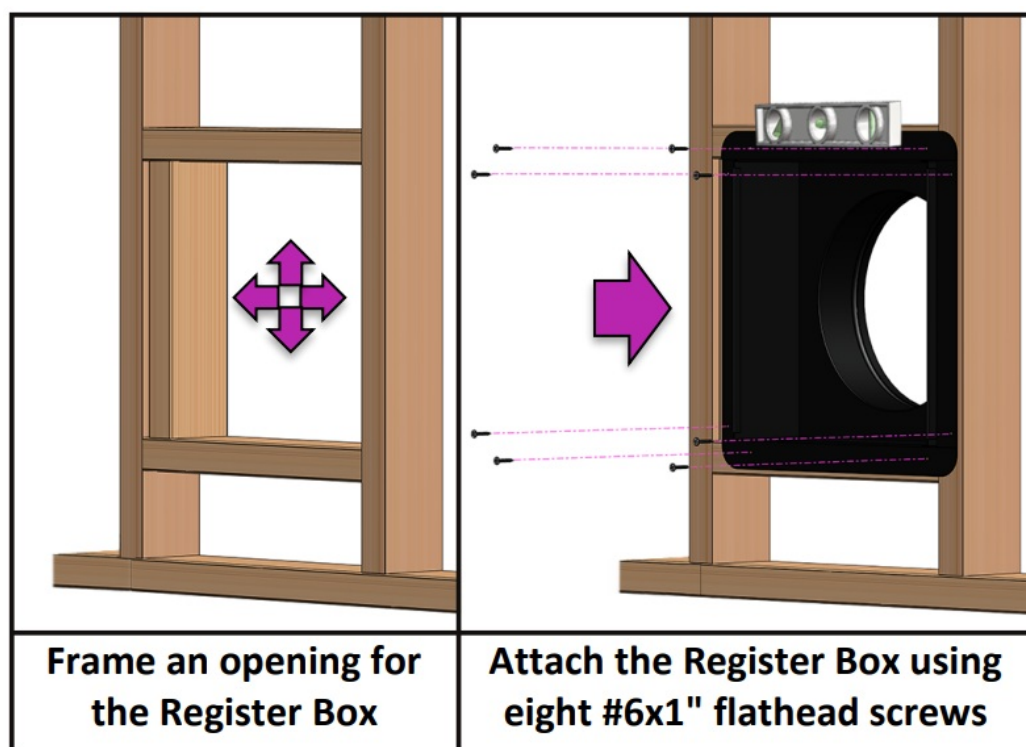
Placement and positioning of the SRS subwoofer can be done before, during, or after attachment of the F/C kit components. This is installation specific and will largely be determined by convenience and access. Besides the grille, in most cases, the hose will be the last component installed, as it links the subwoofer to the room.

**NOTE:** The flexible hose can be bent approximately 90 degrees. It has a bend radius of

12-1/2" (32cm). The hose can also correct for an offset up to half its diameter.

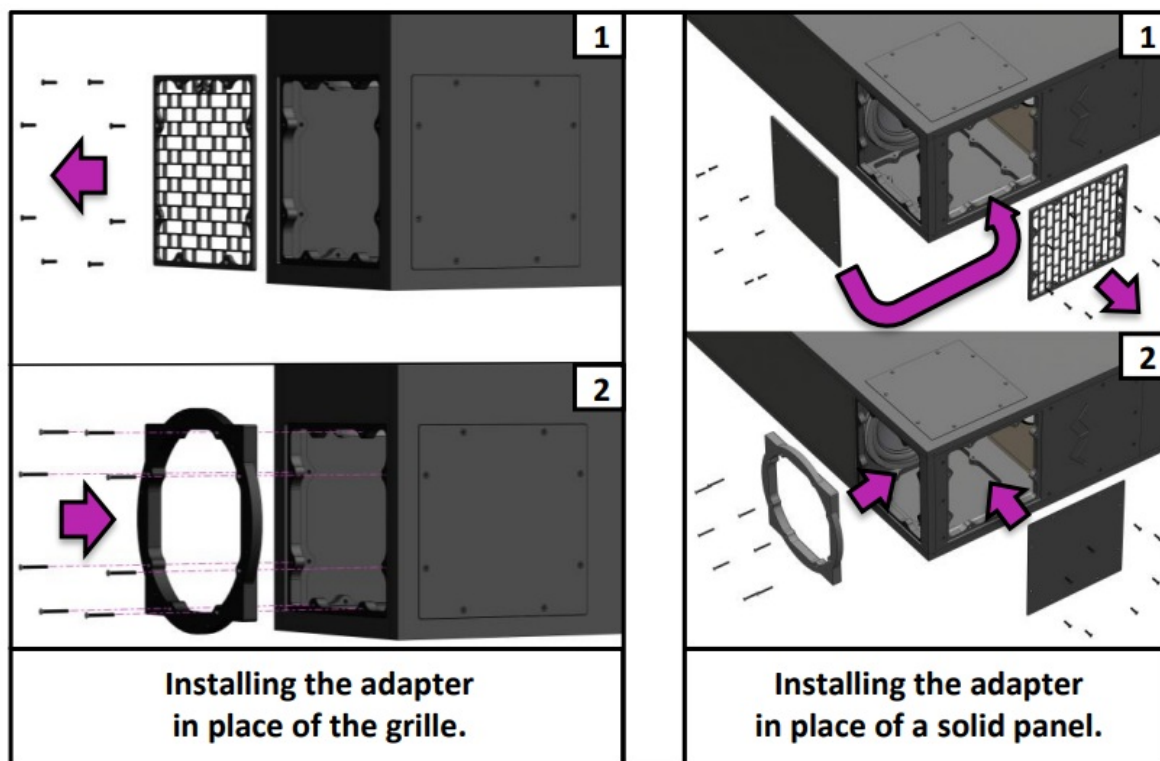
## Installing Register Box

1. Frame an area for the register box. Framing the space ensures the register box can be firmly secured to support the stress of the large flexible hose. If this is a retrofit installation, then the flange of the register box can be trimmed off and the box screwed to the inside of the framing.
2. Attach the register box in the desired location using the eight #6×1" flathead screws or other suitable hardware for the installation. Ensure the register box is level.

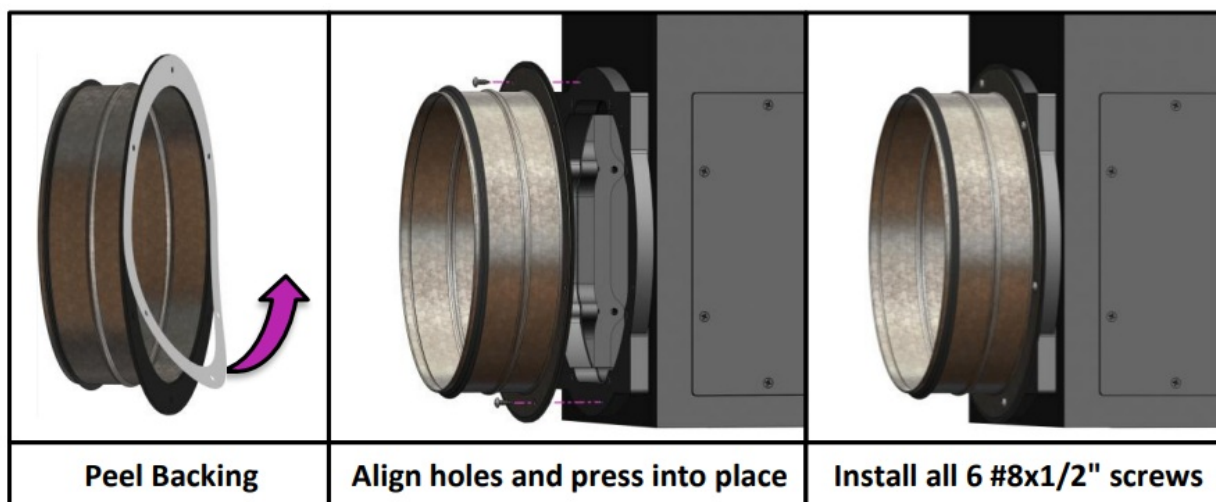


## Installing F/C Adapter and Collar

3. Determine which face of the SRS you will install the F/C kit.
  - a. Remove the grille or the solid panel and replace it with the SRS F/C Adapter using the eight #8-32×1-1/2" (long) flathead screws.
  - b. If the F/C Adapter is used in place of a solid panel, then the solid panel needs to replace the grille. Only a single output of the SRS can be used.



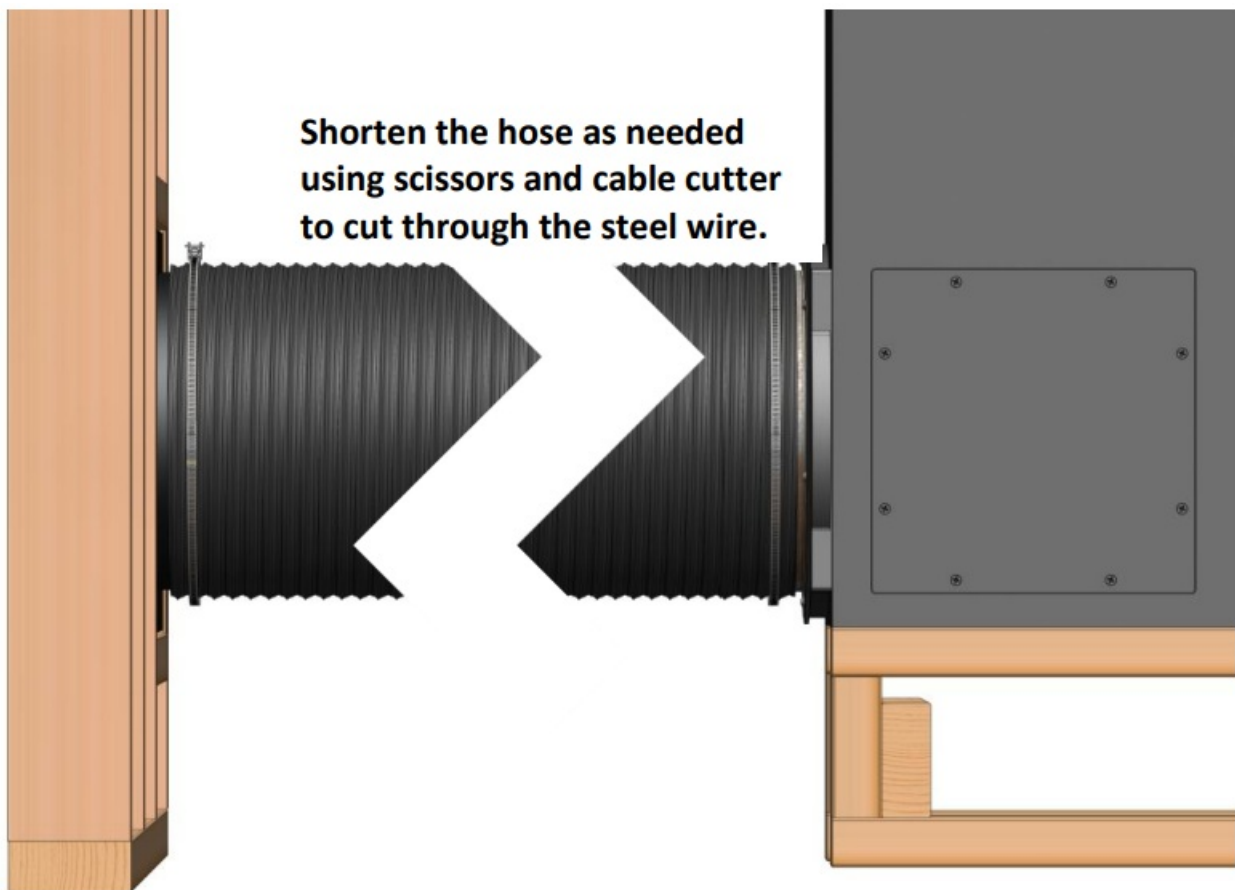
4. Peel the backing from the gasket of the 10" Galvanized Collar. The collar has 6 holes that must be aligned with 6 pre-drilled holes in the F/C adapter. To aid in alignment, you may pass screws through 2 of the holes in the collar and press the collar onto the face of the SRS Adapter, as shown, ensuring that all the holes are in alignment.
  - a. Secure the collar using the 6 supplied #8×1/2" panhead Phillips screws.



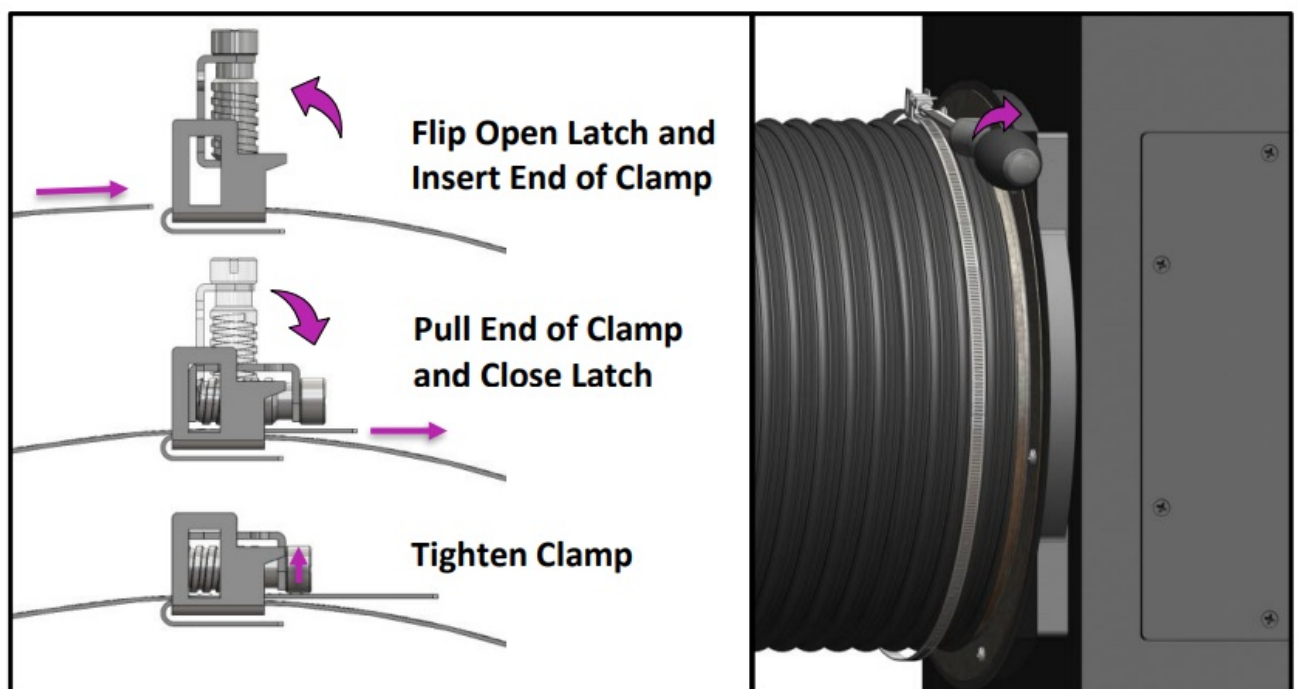
### Connecting it all Together

5. Position the SRS where it will be connected to the register box.
6. Slide one end of the 10" diameter hose onto the galvanized collar.
7. Slide the other end of the hose onto the collar of the register box.



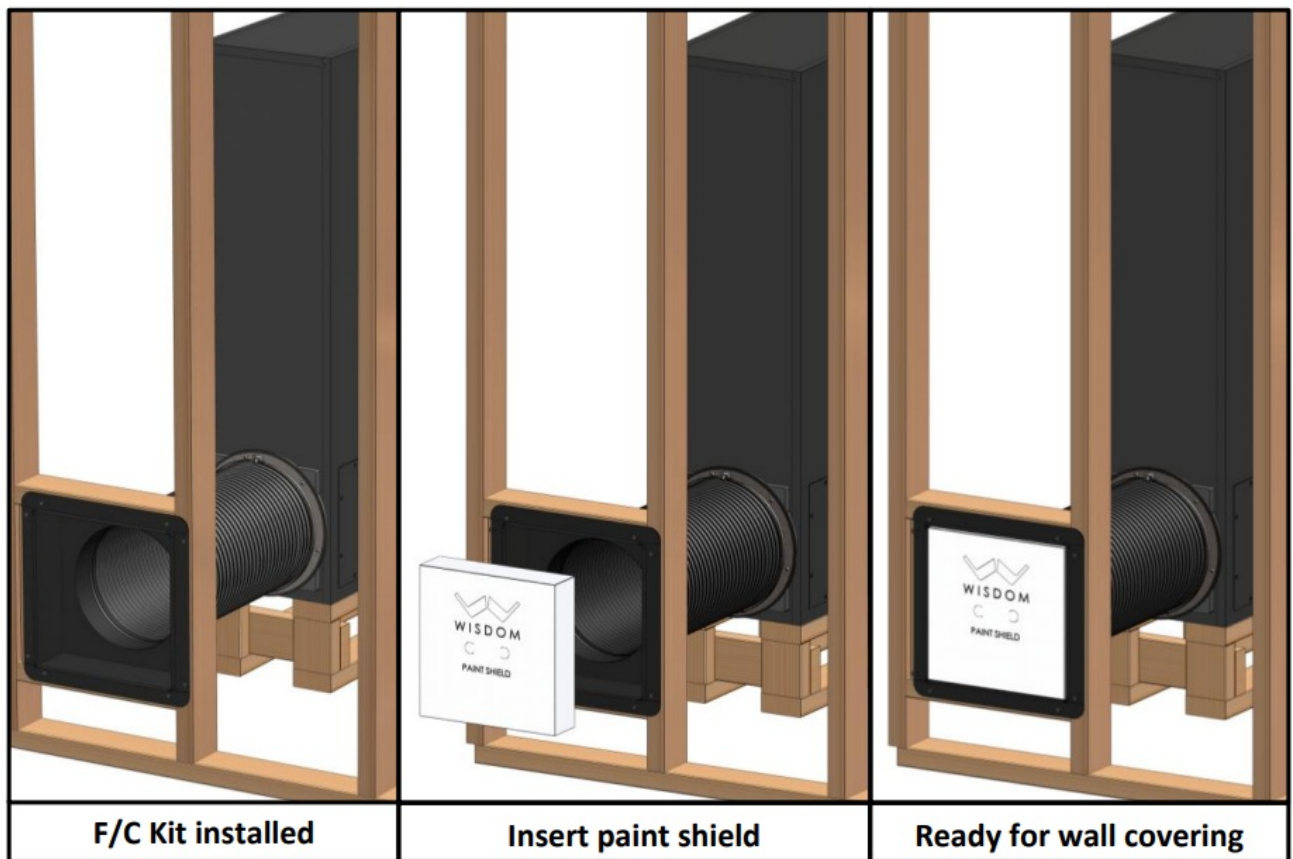


8. Wrap the quick release hose clamps around each end of the hose.
  - a. Open each latch and slip the end of the clamp through the latch.
  - b. Position each hose clamp about 1.5" (38mm) from the base of the collars.
  - c. Pull the clamps tight and close the latches.
  - d. Tighten the clamps using a slotted screwdriver.



**Prepare for Finishing**

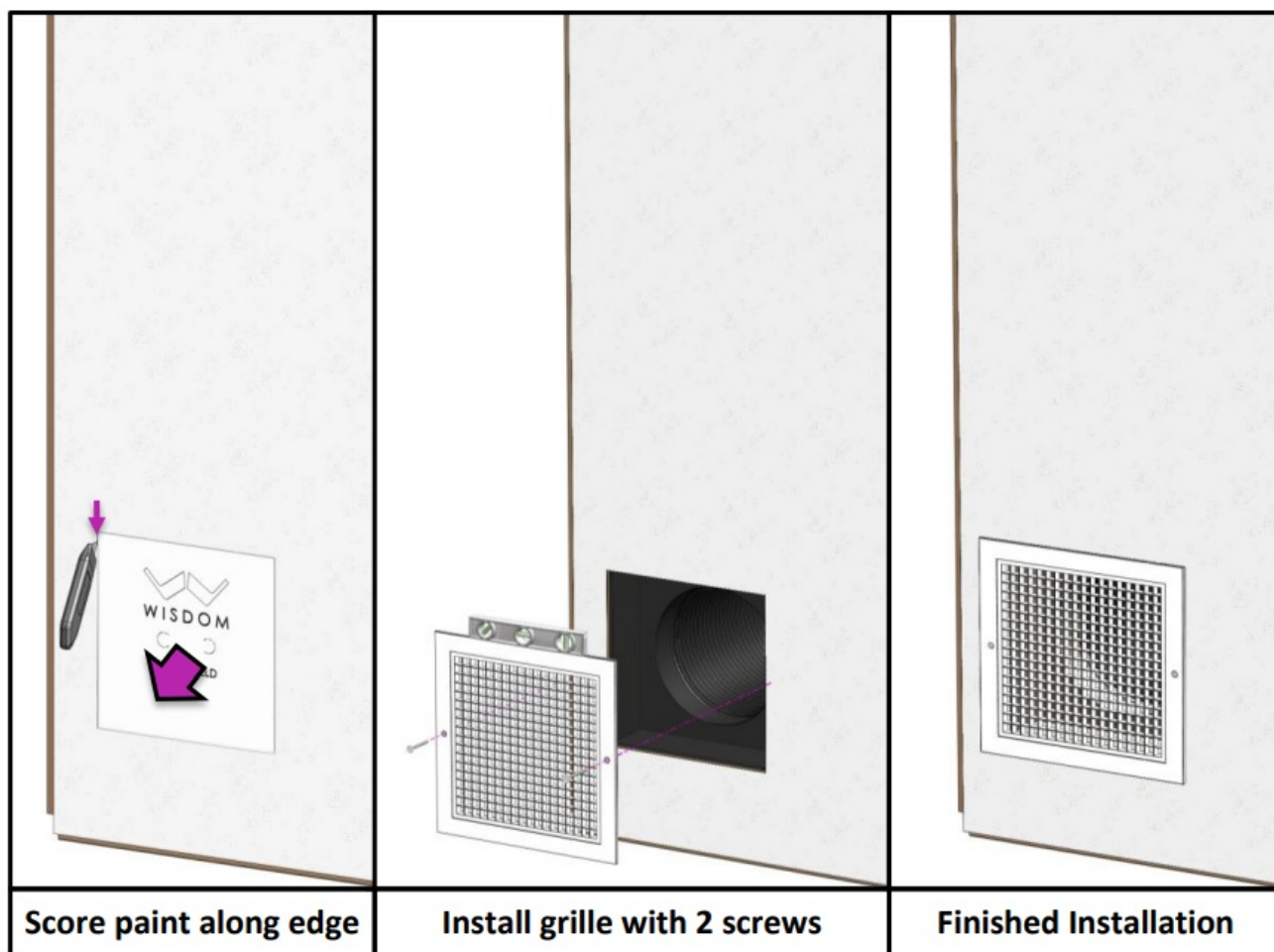
9. Install the paint shield if it is not already in place.



### Finalizing the Installation

10. Remove the paint shield
  - a. Score the paint along the edge of the paint shield.
  - b. Use the two holes at the center of the paint shield to pull the paint shield free from the register box.
11. Install the grille, ensuring that it is level.
  - a. Mark and pre-drill the holes to ensure proper alignment.





## Customizing Your Installation

The F/C kit includes a 12"x12" HVAC register box with a 10" collar that connects to the 24" long semi-flexible hose. This register box will accept standard 12" square HVAC grilles. A high quality 12"x12" HVAC return air grille is provided with the F/C kit, but since styles differ greatly, it is recommended that the installer/owner/interior decorator purchase a grille of their preference if the supplied grille is not suitable. Alternatively, if a 12" square grille does not meet the aesthetic or physical requirements of the installation, the 12" register box can be replaced with a more suitable size. There are many options available for HVAC register grilles and register boxes/boots. A few options are shown below. An on-line search may reveal other options, or you may inquire with an HVAC supplier in your area.

**NOTE:** When choosing a grille, the open area of the grille must be at least that of the 10" (25.4cm) inside diameter flexible hose which has an area of 78 square inches (505cm<sup>2</sup> ).

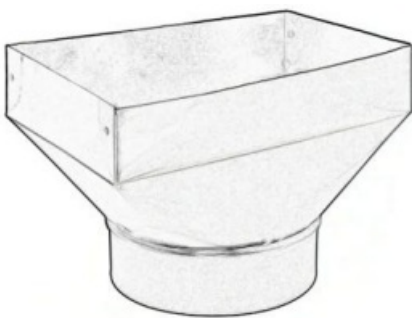
A rectangular size register that is 14"x8" with a 10" collar could work if the chosen grille has greater than 70% open area and introduces minimum turbulence. Grilles that are close to the minimum open area should have a straight, non-deflected path. If the grille is designed to deflect the air, then a larger grille with a larger open area is required to reduce turbulence. If one chooses to create their own custom size output, we recommend contacting an HVAC contractor or custom metal manufacturer for this.

Additionally, avoid using registers that have adjustable louvers. If this type of register is unavoidable, ensure that the louvers are secured in the open position with a suitable adhesive that will prevent the louvers from vibrating.

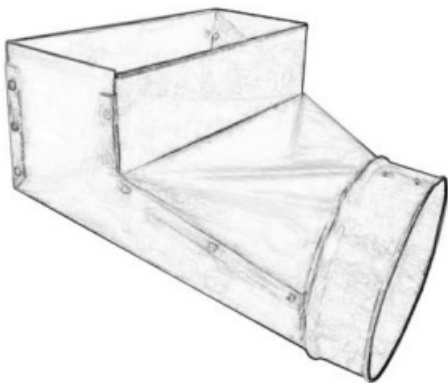
**NOTE:** Do not increase the overall length of the F/C kit. If a custom register boot is used, the length of the flexible hose will need to be shortened equal to the length of the boot to prevent the overall air-path length from increasing. There is no minimum length and the supplied hose can be cut to the length required. The maximum length of the F/C kit is 24" (60cm) before expansion takes place. This is measured along the centerline of the air path. There should also be no constriction of the air path at any point along its length.

### Various Available Register Boots

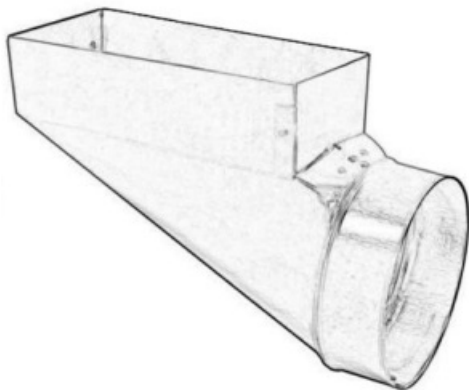
- 14x10x10 Straight Boot



- 14x8x10 90 Deg Boot



- 14x8x10 End Boot



## North American Warranty

### Standard Warranty

When purchased from and installed by an authorized Wisdom Audio dealer, Wisdom Audio loudspeakers are warranted to be free from defects in material and workmanship under normal use for a period of 10 years from the original date of purchase.

**IMPORTANT:** Wisdom Audio loudspeakers are designed for installation and operation in environmentally controlled conditions, such as are found in normal residential environments. When used in harsh conditions such as outdoors or in marine applications, the warranty is three years from the original date of purchase.

During the warranty period, any Wisdom Audio products exhibiting defects in materials and/or workmanship will be repaired or replaced, at our option, without charge for either parts or labor, at our factory. The warranty will not apply to any Wisdom Audio products that have been misused, abused, altered, or installed and calibrated by anyone other than an authorized Wisdom Audio dealer.

Any Wisdom Audio product not performing satisfactorily may be returned to the factory for evaluation. Return authorization must first be obtained by either calling or writing the factory prior to shipping the component. The factory will pay for return shipping charges only if the component is found to be defective as mentioned above. There are other stipulations that may apply to shipping charges.

There is no other express warranty on Wisdom Audio products. Neither this warranty nor any other warranty, express or implied, including any implied warranties of merchantability or fitness, shall extend beyond the warranty period. No responsibility is assumed for any incidental or consequential damages. Some states do not allow limitations on how long an implied warranty lasts, and other states do not allow the exclusion or limitation of incidental or consequential damages, so the above limitation or exclusion may not apply to you.

This warranty gives you specific legal rights, and you may also have other rights, which vary from state to state. This warranty is applicable in the United States and Canada only. Outside of the U.S. and Canada, please contact your local, authorized Wisdom Audio distributor for warranty and service information.

## **Obtaining Service**

We take great pride in our dealers. Experience, dedication, and integrity make these professionals ideally suited to assist with our customers' service needs.

If your Wisdom Audio loudspeaker must be serviced, please contact your dealer. Your dealer will then decide whether the problem can be remedied locally, or whether to contact Wisdom Audio for further service information or parts, or to obtain a Return Authorization. The Wisdom Audio Service Department works closely with your dealer to solve your service needs expediently.

**IMPORTANT:** Return authorization must be obtained from Wisdom Audio's Service Department BEFORE a unit is shipped for service.

It is extremely important that information about a problem be explicit and complete. A specific comprehensive description of the problem helps your dealer and the Wisdom

Audio Service Department locate and repair the difficulty as quickly as possible.

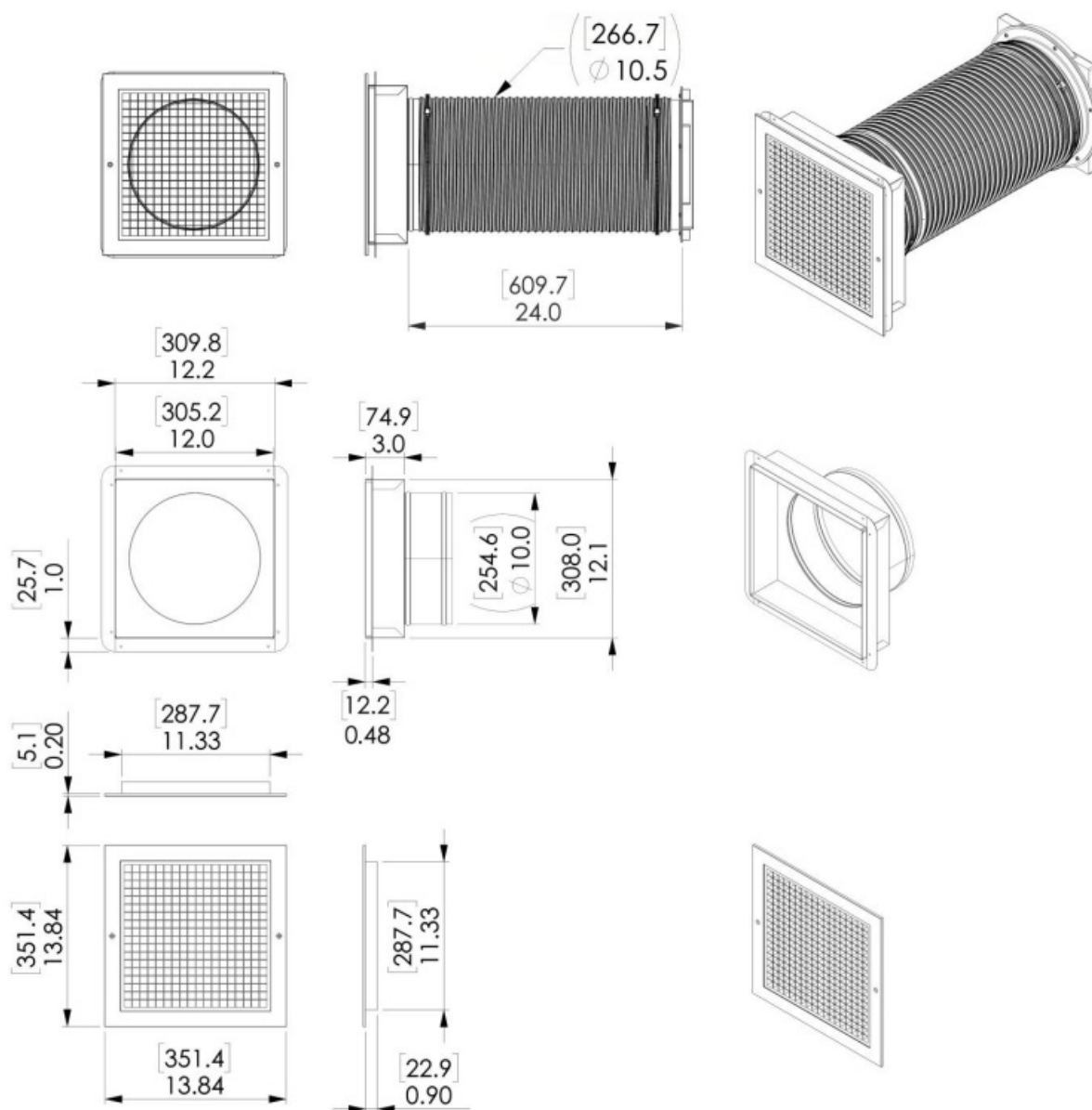
A copy of the original bill of sale will serve to verify warranty status. Please include it with the unit when it is brought in for warranty service.

**CAUTION:** All returned units must be packaged in their original packaging, and the proper return authorization numbers must be marked on the outer carton for identification. Shipping the unit in improper packaging may void the warranty, as Wisdom Audio cannot be responsible for the resulting shipping damage.

Your dealer can order a new set of shipping materials for you if you need to ship your loudspeaker and no longer have the original materials. There will be a charge for this service. We strongly recommend saving all packing materials in case you need to ship your product.

If the packaging to protect the unit is, in our opinion or that of our dealer, inadequate to protect the unit, we reserve the right to repackage it for return shipment at the owner's expense. Neither Wisdom Audio nor your dealer can be responsible for shipping damage due to improper (that is, non-original) packaging.

## **F/C Kit Dimensions**



[XX.X] mm

X.XX inches

## Customer Support

WISDOM and the stylized W are registered trademarks of Wisdom Audio.

Wisdom Audio 1572 College Parkway, Suite 164

Carson City, Nevada 89706 USA

TEL [775-887-8850](tel:775-887-8850)

FAX [775-887-8820](tel:775-887-8820)

[wisdomaudio.com](http://wisdomaudio.com)

SRS F/C Kit OM RevA © 4/1/2025 Wisdom Audio, Inc. All rights reserved. Printed in  
U.S.A.





## Documents / Resources

[WISDOM SRS-F\\_C-Kit SRS High Output RTL Subwoofer Floor Ceiling Kit](#)



[\[pdf\] Owner's Manual](#)

Owner's Manual

SRS  
High Output RTL Subwoofer Floor/Ceiling Kit

SRS-F\_C-Kit, SRS-F\_C-Kit SRS High Output RTL Subwoofer Floor Ceiling Kit, SRS-F\_C-Kit, SRS High Output RTL Subwoofer Floor Ceiling Kit, Output RTL Subwoofer Floor Ceiling Kit, RTL Subwoofer Floor Ceiling Kit, Floor Ceiling Kit, Ceiling Kit, Kit

## References

- [HOME - Wisdom Audio](#)
- [User Manual](#)

■WISDOM◆Ceiling Kit, Floor Ceiling Kit, Kit, Output RTL Subwoofer Floor Ceiling Kit, RTL Subwoofer Floor Ceiling Kit, SRS High Output RTL Subwoofer Floor Ceiling Kit, SRS-F\_C-Kit, SRS-F\_C-Kit SRS High Output RTL Subwoofer Floor Ceiling Kit, WISDOM

[Previous Post](#)

[WISDOM IA-8DSP 8 Channel Amplifier With DSP Owner's Manual](#)

## Leave a comment

Your email address will not be published. Required fields are marked \*

Comment \*

Name

Email

Website

☐ Save my name, email, and website in this browser for the next time I comment.

[Manuals+](#), [Privacy Policy](#) | [@manuals.plus](#) | [YouTube](#)

This website is an independent publication and is neither affiliated with nor endorsed by any of the trademark owners. The "Bluetooth®" word mark and logos are registered trademarks owned by Bluetooth SIG, Inc. The "Wi-Fi®" word mark and logos are registered trademarks owned by the Wi-Fi Alliance. Any use of these marks on this website does not imply any affiliation with or endorsement.