


WISDOM
WISDOM IA-
8DSP 8 Channel
Amplifier With
DSP



WISDOM IA-8DSP 8 Channel Amplifier With DSP Owner's Manual

[Home](#) » [WISDOM](#) » WISDOM IA-8DSP 8 Channel Amplifier With DSP Owner's Manual 

Contents

- [1 WISDOM IA-8DSP 8 Channel Amplifier With DSP](#)
- [2 Product Information: IA-8DSP 8-Channel Amplifier with DSP](#)
- [3 Important Safety Instructions](#)
- [4 Unpacking the IA-8DSP](#)
- [5 Included Accessories](#)
- [6 Placement Considerations](#)
- [7 Front Panel](#)
- [8 Troubleshooting](#)
- [9 Care & Maintenance](#)
- [10 North American Warranty](#)
- [11 Specifications](#)
- [12 Dimensions](#)
- [13 FAQ](#)
- [14 Documents / Resources](#)
 - [14.1 References](#)
- [15 Related Posts](#)



WISDOM IA-8DSP 8 Channel Amplifier With DSP



Product Information: IA-8DSP 8-Channel Amplifier with DSP

Specifications:

- Channels: 8
- Amplifier Type: DSP

Document Conventions

This document contains general safety, installation and operation instructions for the Wisdom Audio IA-8DSP Amplifier. It is important to read this document before attempting to use this product. Pay particular attention to:

- **WARNING:** Calls attention to a procedure, practice, condition or the like that, if not correctly performed or adhered to, could result in injury or death.
- **CAUTION:** Calls attention to a procedure, practice, condition or the like that, if not correctly performed or adhered to, could result in damage to or destruction of part of or the entire product.
- **Note:** Calls attention to information that aids in the installation or operation of the product.

WARNING: TO REDUCE THE RISK OF FIRE OR ELECTRIC SHOCK, DO NOT EXPOSE THIS APPLIANCE TO RAIN OR MOISTURE.



CAUTION: TO REDUCE THE RISK OF ELECTRICAL SHOCK, DO NOT REMOVE COVER. NO USER-SERVICEABLE PARTS INSIDE. REFER SERVICING TO QUALIFIED PERSONNEL.

1. The apparatus shall not be exposed to dripping or splashing and that no objects filled with liquids, such as vases, shall be placed on the apparatus.



2. Warning The apparatus with CLASS I construction shall be connected to a MAINS socket outlet with a protective earthing connection.
3. Warning: The mains plug or appliance coupler is used as disconnect device, the disconnect device shall remain readily operable

**DANGER:**

The lightning flash with arrowhead symbol, within an equilateral triangle, is intended to alert the user to the presence of un-insulated “dangerous voltage” within the product’s enclosure that may be of sufficient magnitude to constitute a risk of electric shock to persons.

**IMPORTANT**

The exclamation point within an equilateral triangle is intended to alert the user to the presence of important operating and maintenance (servicing) instructions in the literature accompanying this equipment.



Marking by the “CE” symbol (shown left) indicates compliance of this device with the EMC (Electromagnetic Compatibility) and LVD (Low Voltage Directive) standards of the European Community.



Note: This equipment has been tested and found to comply with the limits for a Class B digital device, pursuant to part 15 of the FCC Rules. These limits are designed to provide reasonable protection against harmful interference in a residential installation. This equipment generates, uses and can radiate radio frequency energy and, if not installed and used in accordance with the instructions, may cause harmful interference to radio communications. However, there is no guarantee that interference will not occur in a particular installation. If this equipment does cause harmful interference to radio or television reception, which can be determined by turning the equipment off and on, the user is encouraged to try to correct the interference by one or more of the following measures:

- Reorient or relocate the receiving antenna
- Increase the separation between the equipment and the receiver
- Connect the equipment into an outlet on a circuit different from that to which the receiver is connected
- Consult the dealer or an experienced radio/TV technician for help

Important Safety Instructions

Please read all instructions and precautions carefully and completely before operating your Wisdom Audio equipment.

1. Read these instructions.
2. Keep these instructions.
3. Heed all warnings.
4. Follow all instructions.
5. Do not use this equipment near water.
6. Clean only with a dry cloth.
7. Do not block any ventilation openings. Install in accordance with the manufacturer’s instructions.
8. Do not install near any heat sources such as radiators, heat registers, stoves, or other apparatus (including

amplifiers) that produce heat.

9. Do not defeat the safety purpose of the polarized or grounding-type plug. A polarized plug has two blades with one wider than the other. A grounding type plug has two blades and a third grounding prong. The wide blade of the third prong are provided for your safety. If the provided plug does not fit into your socket, consult an electrician for replacement of the obsolete outlet.
10. Protect the power cord from being walked on or pinched particularly at plugs, convenience receptacles, and the point where they exit from the apparatus.
11. Only use attachments/accessories specified by the manufacturer.
12. Unplug this apparatus during lightning storms or when unused for long periods of time.
13. Refer all servicing to qualified personnel. Servicing is required when the apparatus has been damaged in any way, such as a power-supply cord or plug is damaged, liquid has been spilled or objects have fallen into the apparatus, the apparatus has been exposed to rain or moisture, does not operate normally, or has been dropped.
14. ALWAYS disconnect your entire system from the AC mains before connecting or disconnecting any cables, or when cleaning any component.
15. NEVER operate this product with any covers removed.
16. NEVER wet the inside of this product with any liquid.
17. NEVER pour or spill liquids directly on to this unit.
18. NEVER bypass any fuse.
19. NEVER replace any fuse with a value or type other than those specified.
20. NEVER operate this product in an explosive atmosphere.
21. ALWAYS keep electrical equipment out of the reach of children.

Unpacking the IA-8DSP

CAUTION: Do not attempt to lift your IA-8DSP while bending or twisting from the waist. Use your legs for lifting, not your back. Always stand as straight as possible and keep the IA-8DSP close to your body to reduce strain on your back. After unpacking your IA-8DSP, keep all packing materials for future transport. In the event that you need to ship your IA-8DSP, only the original, purpose-designed shipping carton is acceptable. Any other method of shipping this product runs a risk of damage to the IA-8DSP; damage that would not be covered by the warranty. Carefully inspect your IA-8DSP for possible damage due to shipping. If you discover any, contact your Wisdom Audio dealer immediately.

Included Accessories

- Power Cord (North America) – IC 320-C19/Nema 5-15P
- Power Cord (EU) – IEC 320-C19/CEE 7/7
- Rackount Ears Left/Right (Pre-Installed on all 2025 and newer units)
- Screws (6) Torx T10
- Torx Wrench – T10
- Banana Jacks (Speaker Termination)
- Rubber Feet For Tabletop Use

Placement Considerations

PRECAUTION

For your protection, review “Important Safety Instructions” before you install your IA-8DSP. Note that adequate clearance for the AC cord and connecting signal cables must be left behind your IA-8DSP. We suggest leaving at least six inches (15 cm) of free space behind your IA-8DSP so all cables have sufficient room to bend without crimping or strain. If possible, the IA-8DSP should also be placed in such a way that the power switch on the rear panel is easily accessible. This switch disconnects power from the unit completely, resulting in effective disconnection of the IA-8DSP from the AC mains. You might think of this as a “vacation switch”, should you wish to turn off your system completely when you will be away from home for a prolonged period of time. Just remember to turn it back on again when you return.

Ventilation

Your Wisdom Audio IA-8DSP has relatively modest ventilation requirements, thanks to its remarkably efficient design. Typically, it becomes only modestly warm during normal operation. Still, please be certain to keep the vents on the sides of the amplifier clear of any obstruction. (The rack mount attachments have corresponding vents.) Mechanical drawings are included in this manual to facilitate special installations where necessary (see “Dimensions” at the end of this manual).

NOTE: Care must be taken to allow for proper airflow in the AV Rack. The amplifiers use passive cooling and air movement is required for this to work properly.

Operating Voltage

For compatibility with existing household outlets, a standard three prong, 20-ampere plug is provided on the removable, IEC-standard AC mains cable. The Wisdom Audio IA-8DSP has a universal 100V-240V, 50hz-60hz AC mains operation. Outside the United States, and depending on local electrical codes and regulations, the AC mains cord may need to be replaced with one that conforms to local plug/outlet standards.

NOTE: The AC receptacle employs a 20-amp IEC 320-C19 standard socket (not a 15-amp IEC socket). Rackmount Installation Rack mount ears are included with the IA-8DSP and IA-8DSPDSP. These allow the amplifier to be mounted in a standard 19” wide rack mount.

Each amplifier requires 2RU of height.

1. Remove the three (3) T10 screws on the side of the unit closest to the front faceplate using the included T10 Torx screwdriver.
2. Place the rack ears over the side panel and align with the screw holes.
3. Attach the rack ears with the black Torx screws included with the Rack Ears.

NOTE: Pre-Installed on all 2025 Units.

Optional Accessories

DANTE Audio input (Audio-Over-IP) can be installed by an authorized dealer.

Front Panel



1. Power Indicator:

The international symbol for power is inscribed in this location to designate its purpose. When power is first switched on, the IA-8DSP will turn on automatically. The only way to place the unit in Standby is with the DC Trigger (above). An AC mains switch is located adjacent to the power cord on the rear panel of the IA-8DSP. This switch may be used to disconnect the unit from the AC mains without having to unplug the IA-8DSP from the wall outlet. If you plan to be away for an extended period or have any other reason to turn the IA-8DSP completely off, you may either unplug the IA-8DSP or you may use the AC mains switch. There are three normal states for the lit indicators

- Lit amber LED on left side indicates the unit is receiving power and is in standby
- Lit blue channel status indicators indicate the unit is receiving power and is on
- If both the amber and blue LEDs are off, no power is being supplied

2. Channel Status Indicators:

These eight LEDs provide visual confirmation of the operational status of the eight channels in your IA-8DSP. The IA-8DSP has built in monitoring for each amplifier channel for temperature and clipping, as well as a system power supply temperature and mains AC line voltage. This ensures the amplifier will operate safely. The front panel LED indicators will display the status of the unit.

- All Blue LED On = Normal Operation
- Individual Channel Blue LED OFF = Clipping Error. The LED will be OFF to indicate the channel is disabled. The IA-8DSP will disable a single channel if that channel has clipping at either the input into the amplifier module or the output of the amplifier module, and then will enable the channel after waiting 15 seconds. If Clipping is still occurring the channel will disable again and retry. If this continues to happen, remove the input and/or output for the indicated channel and check for shorts or excessive input signal level.
- Blue LED Blinking 2x Per second = Overtemperature Error. A single channel has been disabled due to Overtemperature. The IA-8DSP will disable the channel and wait until the channel temperature returns to normal and then automatically restart normal operation. This is monitored individually for each channel.
- ALL Blue LED Long Blink Together (Mostly On) = Power Supply Over- temperature. The LED will be mostly ON with a short off blink to indicate a power supply error. If the power supply has a fault such as Over-temperature or Over-Current the system will MUTE all channels and wait for the error to clear before restarting normal operation. In this case the unit may be being overdriven across all channels for too long.
- Amplifier Turns Off Automatically = If there is a critical fault in the amplifier power supply such as a blown fuse or internal error, the unit will turn off and not allow the unit to power on. This will also happen if the

incoming mains voltage is too high or too low, such as a brown out or power failure condition.

- All Blue LED Short Blink (Mostly Off) = Amplifier (all channels) are disabled. This can indicate an internal problem with the high output amplifier or an internal communication error. Power cycle the amplifier to check for normal operation. If this error continues the amplifier needs to be checked by a qualified service technician. Do not open the cover without training and safety equipment.

Troubleshooting

- If one or more indicators are blinking or will not turn on, and will not turn back on automatically, turn off the amplifier and completely disconnect the speaker wires for the offending channel. Turn the amplifier back on and check the status indicator. If it is still blinking, there is likely an internal problem within the IA- 8DSP. Please contact your local Wisdom Audio dealer or Wisdom Audio's Technical Service department for assistance
- If removing the speaker wires from the offending channel appears to solve the problem; check the DC resistance across the speaker leads you disconnected. It should read several ohms (the exact number varies a bit by model). If the DC resistance is under 12, carefully check all the connections to make sure no speaker wires are touching each other or shorted out as a result of their insulation having been damaged. If yours is a custom installation with wires that are run in the walls, you should probably call your Wisdom Audio dealer for assistance trouble-shooting the installation.

Rear Panel IA-8DSPDSP

1. Balanced Audio Inputs
2. Speaker Output Terminals
3. DC Trigger In and Out
4. AC Mains Input (IEC 320-C19) and Switch
5. Ethernet / USB system setup and diagnostics
6. DANTE Audio over IP (Optional – Dealer Installed)
7. Network Reset

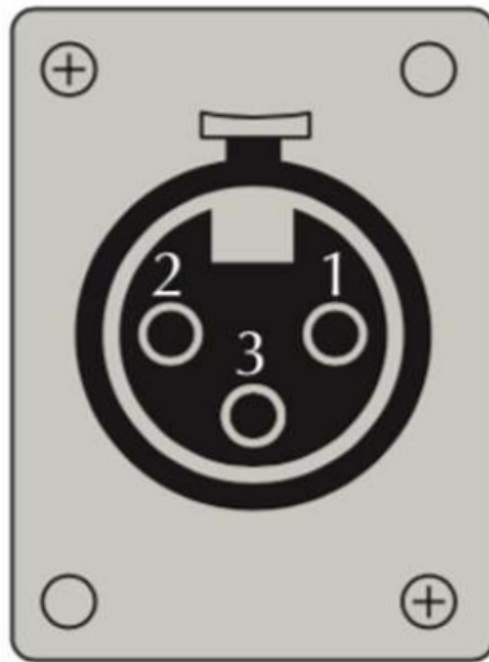


CAUTION! Turn off the IA-8DSP before attempting to make or change any connections.

Balanced Audio Inputs

These balanced audio inputs accept output signals from a preamp or surround processor via a high quality XLR connector. The pin assignments of this XLR-type female input connector are:

- Pin 1: Chassis ground
- Pin 2: Signal + (non-inverting)
- Pin 3: Signal – (inverting)
- Connector ground lug: chassis ground



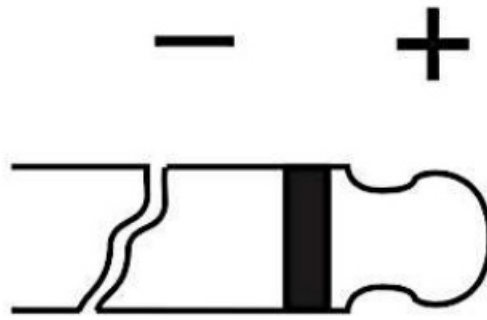
These pin assignments are consistent with the standards adopted by the Audio Engineering Society. Connect the appropriate outputs of your preamp to these inputs, using our WWK-BB8 / CUSTOM-WWK-BB8 balanced audio interconnect kits. If using off the shelf interconnects or making your own cables, only use shielded 3 conductor audio cable.

Speaker Output Terminals

The Wisdom Audio SA-series amplifiers are equipped with high-current binding posts for output termination to the loudspeaker system. To take full advantage of the amplifier's sonic quality, we recommend using high- quality speaker cable; please see your Wisdom Audio dealer. **CAUTION! NEVER** connect a power amplifier's output terminals to any device other than a loudspeaker. **NEVER** short-circuit the amplifier's output terminals. **NEVER** connect the output terminals of one amplifier to the output terminals of another amplifier. Connect the + (positive) output post of the amplifier to the + (positive) input terminal of the appropriate loudspeaker. Connect a – (negative or black) output post of the amplifier to the – (negative or black) input terminal of the appropriate loudspeaker. Take care to maintain this proper polarity throughout the system.

DC Trigger In and Out

These 12v trigger jacks provide compatibility with a wide range of products to facilitate remote turn-on and turn-off in systems.



Input Signal: 4-20 volts @ less than 10 mA Output Signal: 12 volts @ 100mA

These 1/8" (3.5 mm) "mini-jacks" allow other components to bring the IA-8DSP in and out of standby. Two such mini-jacks are provided to allow "daisy-chaining" of this turn-on signal with other components, including additional amplifiers. The remote trigger input will be operated by any positive-polarity DC signal between 4-20 volts (only a few milliamps are required), with tip polarity as shown below. The DC Trigger Input has priority over the front panel switch. Therefore, if a trigger voltage is present at this input connector, the unit will be forced on and the front panel switch will be ignored. When the voltage transitions from high to low (off), the unit will go into standby. When there is no voltage present at the trigger input (either because the controlling device is not sending, or because the plug is removed), the front panel switch will operate the IA-8DSP, as you would expect. The 12v Trigger Output jack is driven to a "high" state of 12 volts a few seconds after the IA-8DSP is turned on and can source as much as 100 mA of current at 12 volts. This signal may be used in turn to control other components, such as additional Wisdom Audio SA-series amplifiers. Each Wisdom Audio component has a short delay built into its DC trigger system to facilitate a staggered turn-on sequence. Your Wisdom Audio dealer can help you take advantage of these design features to maximize your system's convenience and versatility.

AC Mains Input & Switch

An IEC 320-C19 removable power cord is used with the IA-8DSP. A high quality AC mains cord is included with the product, although the use of the standardized IEC receptacle means that you may easily substitute another high quality AC mains cord if you wish .

Note: due to the high current nature of the IA-8DSP, it uses a 20-ampere IEC receptacle, rather than the more common 15-ampere version, and it will not accept a 15-ampere cord. If you decide to use an after-market power cord, it must employ the compatible 20- ampere IEC 320-C19 connector.

WARNING! Your new Wisdom Audio IA-8DSP has been safety-tested and is designed for operation with a three-conductor power cord. Do not defeat the earth ground of the AC power cord. An AC mains switch is located above the power cord on the rear panel of the IA-8DSP. This switch may be used to disconnect the unit from the AC mains without having to unplug the IA-8DSP from the wall outlet. If you plan to be away for an extended period or have any other reason to turn the IA- 8DSP completely off, you may either unplug the IA-8DSP or you may use the AC mains switch.

DANGER! Potentially dangerous voltages and current capabilities exist within your IA-8DSP. Do not attempt to open any portion of the IA-8DSP's cabinet. There are no user-serviceable parts inside your IA-8DSP. All service of this product must be referred to a qualified Wisdom Audio dealer or distributor.

Ethernet and USB

The Ethernet connection allows for simple monitoring of the IA-8DSP. At this time there are no user accessible setting and no connection to the network is required for operation. For the IA-&DSPDSP, connection to a local network will allow for setup of the internal DSP using the built in web-server user interface. This should only be conducted by an Authorized Wisdom Audio installer. The ethernet interface does not need to be connected after setup is complete and can be disconnected if desired. The USB connection is included for Factory Use only. If directed by Wisdom Audio this port may be used for diagnostic or firmware updates but is not needed in normal use.

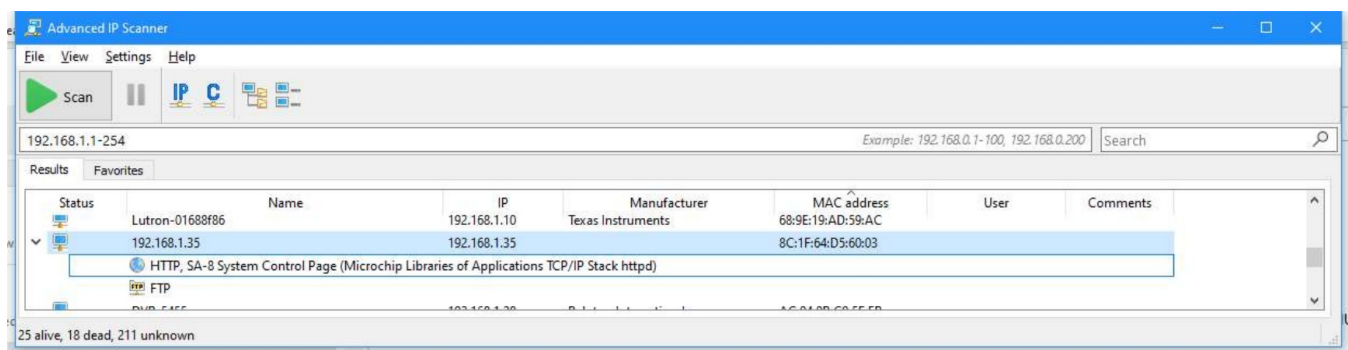
Connecting the IA-8DSP on a Local Area Network with DHCP Server

This is the most common connection method and will be used by most standard home networks. There are several connection options below. For multiple amplifiers on a single network, we recommend connecting one at a time, and renaming them with a unique name or Static IP Address. Connect the IA-8DSP unit to the Local Area Network (LAN) by plugging an Ethernet cable into the Ethernet port on the rear of the unit and to an open port on the network router or switch. This is NOT the DANTE port. Turn on the unit and take it out of standby.

The IA-8DSP should always be discoverable via its mDNS name. You may need to install an mDNS application such as Bounjour Print Services for Windows from Apple. To access the IA-8DSP, open a web browser (Wisdom Audio recommends Firefox) and search for the following address: <http://IA-8.local>

If the IA-8DSP cannot be located using mDNS, it can be accessed via IP address. First locate the IP address of the IA-8DSP by performing an IP scan of the network using a scanner such as the Advanced IP Scanner.

Identify by Name or MAC Address 8C:1F:64:D5:6x:xx



Once the IP address has been discovered, use it to access the Speaker Wizard by entering the IP address as shown in the example below:

Example: 192.168.1.35

Direct Connection without a Network and/or without a DHCP Server If the above methods do not work, you can connect directly without a router or switch. The IA-8DSP will have a default IP Address of 169.254.0.8 if no DHCP router is found. This can happen if you are using a switch only, or have connected directly from your computer to the IA-8DSP.

Note that you can only connect one (1) SA-x at a time with this method.

Connect the SA-x unit to the Ethernet port of your computer by plugging an Ethernet cable from the computer directly to the SA-x without a router or switch. Turn on the unit and take it out of standby. Open your web browser and enter the IP Address of 169.254.0.8

DANTE (Dealer Installed Option)

RJ45 connection for DANTE and AES67 audio. Proper connection should only be done by trained installers. DANTE training can be obtained by contacting www.audinate.com. Training is free and available online. Do not connect the home network to this connection unless directed by Wisdom Audio, or by an Audinate trained or DANTE certified installer. Gigabit switches are recommended, and 100Mbps switches may be used in limited scenarios.

- For low channel count (<32) applications, a 100Mbps switch may be used as long as it supports proper QoS, and QoS is active. The use of 100Mbps switches without QoS is not recommended or supported.
- For higher channel counts, Gigabit switches are essential. QoS is recommended for Gigabit switches on networks that share data with services other than Dante. Dante makes use of standard Voice over IP (VoIP)

Quality of Service (QoS) switch features, to prioritize clock sync and audio traffic over other network traffic.

Any switches with the following features should be appropriate for use with Dante:

- Gigabit ports for inter-switch connections
- Quality of Service (QoS) with 4 queues
- Diffserv (DSCP) QoS, with strict priority
- A managed switch is also recommended, to provide detailed information about the operation of each network link: port speed, error counters, bandwidth used, etc.
- The ability to deactivate Energy Efficient Ethernet (EEE). Unmanaged switches that feature EEE should not be used with Dante.

Network Reset Switch (For Qualified Installers Only)

- “Network Reset” – Press and hold reset button for 5 seconds with unit READY POWERED ON will do the following:
 - Reset IP to DHCP
 - Reset Host Name to “IA-8”
 - Reset DHCP servers
 - Does not clear any USER memory settings.

Care & Maintenance

To remove dust from the cabinet of your IA-8DSP, use a feather duster or a lint-free soft cloth. To remove dirt and fingerprints, we recommend isopropyl alcohol and a soft cloth. Dampen the cloth with alcohol first and then lightly clean the surface of the IA-8DSP with the cloth. Do not use excessive amounts of alcohol that might drip off the cloth and into the IA-8DSP. CAUTION! At no time should liquid cleaners be applied directly to the IA-8DSP, as direct application of liquids may result in damage to electronic components within the unit.

North American Warranty

When purchased from and installed by an authorized Wisdom Audio dealer, Wisdom Audio electronic products are warranted to be free from defects in material and workmanship under normal use for a period of five years from the original date of purchase. During the warranty period, any Wisdom Audio component exhibiting defects in materials and/or workmanship will be repaired or replaced, at our option, without charge for either parts or labor, at our factory. The warranty will not apply to any Wisdom Audio component that has been misused, abused, altered, or installed and calibrated by anyone other than an authorized Wisdom Audio dealer. Any Wisdom Audio component not performing satisfactorily may be returned to the factory for evaluation. Return authorization must first be obtained by either calling or writing the factory prior to shipping the component. The factory will pay for return shipping charges only in the event that the component is found to be defective as mentioned above. There are other stipulations that may apply to shipping charges.

There is no other express warranty on this component. Neither this warranty nor any other warranty, express or implied, including any implied warranties of merchantability or fitness, shall extend beyond the warranty period. No responsibility is assumed for any incidental or consequential damages. Some states do not allow limitations on how long an implied warranty lasts and other states do not allow the exclusion or limitation of incidental or consequential damages, so the above limitation or exclusion may not apply to you. This warranty gives you specific legal rights, and you may also have other rights, which vary from state to state. This warranty is applicable in North America only. Outside of North America, please contact your local, authorized Wisdom Audio distributor for warranty and service information.

Obtaining Service

We take great pride in our dealers. Experience, dedication, and integrity make these professionals ideally suited to assist with our customers' service needs. If your Wisdom Audio loudspeaker must be serviced, please contact your dealer. Your dealer will then decide whether the problem can be remedied locally, or whether to contact Wisdom Audio for further service information or parts, or to obtain a Return Authorization. The Wisdom Audio Service Department works closely with your dealer to solve your service needs expediently.

IMPORTANT! Return authorization must be obtained from Wisdom Audio's Service Department BEFORE a unit is shipped for service. It is extremely important that information about a problem be explicit and complete. A specific, comprehensive description of the problem helps your dealer and the Wisdom Audio Service Department locate and repair the difficulty as quickly as possible. A copy of the original bill of sale will serve to verify warranty status. Please include it with the unit when it is brought in for warranty service.

WARNING! All returned units must be packaged in their original packaging, and the proper return authorization numbers must be marked on the outer carton for identification. Shipping the unit in improper packaging may void the warranty, as Wisdom Audio cannot be responsible for the resulting shipping damage. Your dealer can order a new set of shipping materials for you if you need to ship your loudspeaker and no longer have the original materials. There will be a charge for this service. We strongly recommend saving all packing materials in case you need to ship your unit. If the packaging to protect the unit is, in our opinion or that of our dealer, inadequate to protect the unit, we reserve the right to repackage it for return shipment at the owner's expense. Neither Wisdom Audio nor your dealer can be responsible for shipping damage due to improper (that is, non-original) packaging.

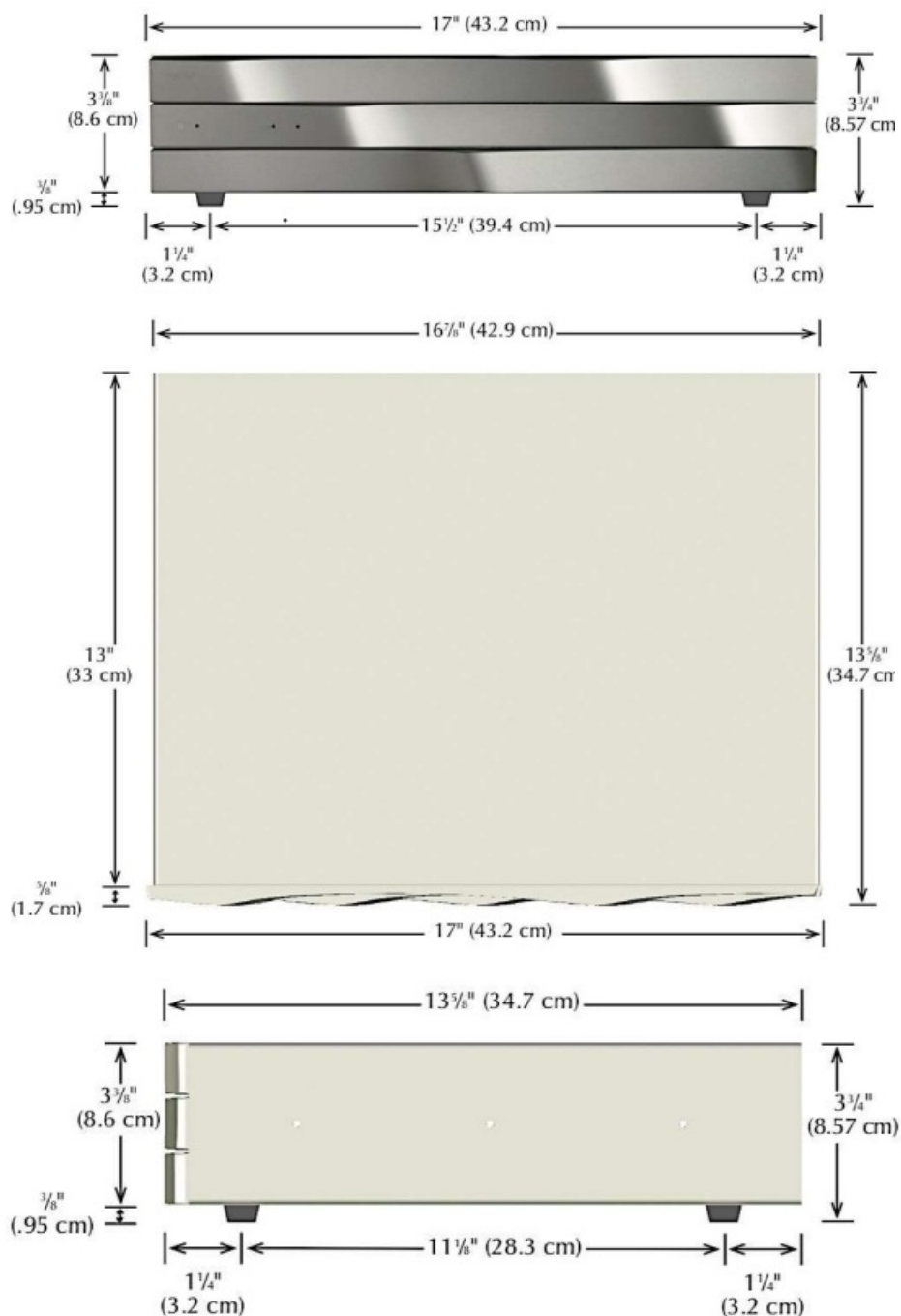
Specifications

All specifications are subject to change at any time, in order to improve the product.

- Rated power output per channel, from 20 Hz-20 kHz at <1.0% THD
- 250 w/ch continuous rms power @ 452;
- 125 w/ch continuous rms power @ 852;
- Minimum Impedance: 292
- Signal to Noise ratio: -110 dB (ref 1V rms, A-wtd.)
- Frequency Response: 5Hz – 45kHz, +0/-0.5dB
- Dynamic Range: 120 dB
- Voltage gain: >30 dB
- Input sensitivity: 1.2V for full output
- Input impedance: 25 kg (balanced)
- Polarity: Non-inverting, Pin 2 positive
- Output impedance: Less than 0.052 from 20-20,000 Hz
- DSP Signal Processor: 96kHz Analog Devices, 32 Bit Processor
- DANTE/AES67 Inout: 8 Channel Inout (44. 1kHz up to 192kHz samolina at 24bit)
- User DSP: 10 Band PEQ/Filter, Delay and Gain x 8 Channels
- Speaker Driver Management: Up to 8th Order Crossover, FIR and IIR Filters, Delay
- Input Routing Matrix: 16x8
- System Setup: Internal Web server page Wizard UI
- Thermal load: 7 BTU/minute or less [preliminary]
- Mains Voltage: 100V-120V @ 15A; 220V-240V @ 12A; 50hz-60hz
- Removable Power Cord: IEC 320-C19 Mains Socket
- Power consumption: 10W (#5%) [preliminary] at idle and 0.5W (#5%) in standby
- Operating Temperature: 41 ° F-95° F(5° C – 35° C)

- Environmental Conditions:
 - Temperature: 0°C – 40°C / 32°F – 104°F
 - Humidity: 20% – 80% relative humidity (without condensation)
- Error Monitoring:
 - Per Channel Clipping and Temperature
 - Power Supply Over/Under Voltage and Temperature
 - Event Monitoring and Download through Web-page Wizard UI
- Dimensions HxWxD: 3.75" x 17" x 13.63" (8.57c x 43.2cm x 34.7 cm)
- Weight: 19 lbs (8.6kg)
- Shipping Weight: 25 lbs. (11.5 kg)
- Shipping Dimensions: 25"x 20" x 9" (63.5cm x 50.8cm x 22.8cm)

Dimensions



WISDOM and the stylized W are registered trademarks of Wisdom Audio.

Wisdom Audio
1572 College Parkway, Suite 164
Carson City, Nevada 89706 USA
Telephone: 775.887.8850
Fax: 775.887.8820
www.wisdomaudio.com

IA-8DSP OM-1.0 © 2025-02-06 Wisdom Audio, Inc. All rights reserved. Printed in U.S.A.


FAQ

- **Q: What should I do if the amplifier shows signs of overheating?**
A: Ensure proper ventilation and consider relocating the amplifier to a cooler area.
- **Q: Can I connect external speakers directly to the IA-8DSP?**
A: Yes, you can connect speakers to the designated output channels on the rear panel of the amplifier.

Documents / Resources

 Owner's Manual IA-8DSP 8 Channel Amplifier with DSP	WISDOM IA-8DSP 8 Channel Amplifier With DSP [pdf] Owner's Manual IA-8DSP, IA-8DSP 8 Channel Amplifier With DSP, IA-8DSP, 8 Channel Amplifier With DSP, Amp lifier With DSP, DSP
--	---

References

-  [HOME - Wisdom Audio](#)
- [User Manual](#)

[Manuals+](#), [Privacy Policy](#)

This website is an independent publication and is neither affiliated with nor endorsed by any of the trademark owners. The "Bluetooth®" word mark and logos are registered trademarks owned by Bluetooth SIG, Inc. The "Wi-Fi®" word mark and logos are registered trademarks owned by the Wi-Fi Alliance. Any use of these marks on this website does not imply any affiliation with or endorsement.