



Winsen ZPHS01C Multi In One Air Quality Monitoring Sensor User Manual

[Home](#) » [Winsen](#) » Winsen ZPHS01C Multi In One Air Quality Monitoring Sensor User Manual 

Winsen ZPHS01C Multi In One Air Quality Monitoring Sensor User Manual



Contents

- [1 Statement](#)
- [2 Profile](#)
- [3 Application](#)
- [4 Specification](#)
- [5 Module Appearance](#)
- [6 Module size](#)
- [7 Pin Definition](#)
- [8 customer Support](#)
- [9 Documents / Resources](#)
 - [9.1 References](#)
- [10 Related Posts](#)

Statement

This manual copyright belongs to Zhengzhou Winsen Electronics Technology Co., LTD. Without the written permission, any part of this manual shall not be copied, translated, stored in database or retrieval system, also

can't spread through electronic, copying, record ways. Thanks for purchasing our product. In order to let customers use it better and reduce the faults caused by misuse, please read the manual carefully and operate it correctly in accordance with the instructions. If users disobey the terms or remove, disassemble, change the components inside of the sensor, we shall not be responsible for the loss. The specific such as color, appearance, sizes ...etc., please in kind prevail. We are devoting ourselves to products development and technical innovation, so we reserve the right to improve the products without notice. Please confirm it is the valid version before using this manual. At the same time, users' comments on optimized using way are welcome. Please keep the manual properly, in order to get help if you have questions during the usage in the future.

Profile

This module integrates Electro chemical formaldehyde, Semiconductor VOC sensor, Laser particle sensor, NDIR CO2 sensor and temperature& humidity sensor. (Users could choose CH2O version or VOC version, they are not concomitant.) Communication Interface: TTL serial/RS485, Baud rate:9600, data bit:8, stop bit:1, parity bit: none.

Application

- Gas detector
- Air conditioner
- Air quality monitoring
- Air purifier
- HVAC system
- Smart home

Specification

Model	ZPHS01C
Target Gas	PM2.5, CO2, CH2O, TVOC, Temperature&Humidity
Interference gas	Alcohol/CO gas...etc.
Working voltage	5V (DC)
Average Current	500 mA
Interface level	3 V(compatible with 3.3V)
Output signal	UART/RS485
Preheat time	≤ 3min
CO2 range	400~5000ppm
PM2.5 range	0~1000ug/m3
CH2O range	0~1.6ppm
TVOC range	4 grades
Tem. range	0 65°C
Tem. precision	±0.5°C
Hum. range	0~100% RH
Hum. precision	±3%
Working Tem.	0 50°C
Working Hum.	15~80% RH(no condensation)
Storage Tem.	0 50°C
Storage Hum.	0~60% RH
Size	62.5mm (L) x 61mm(W) x 25mm(H)

Module Appearance

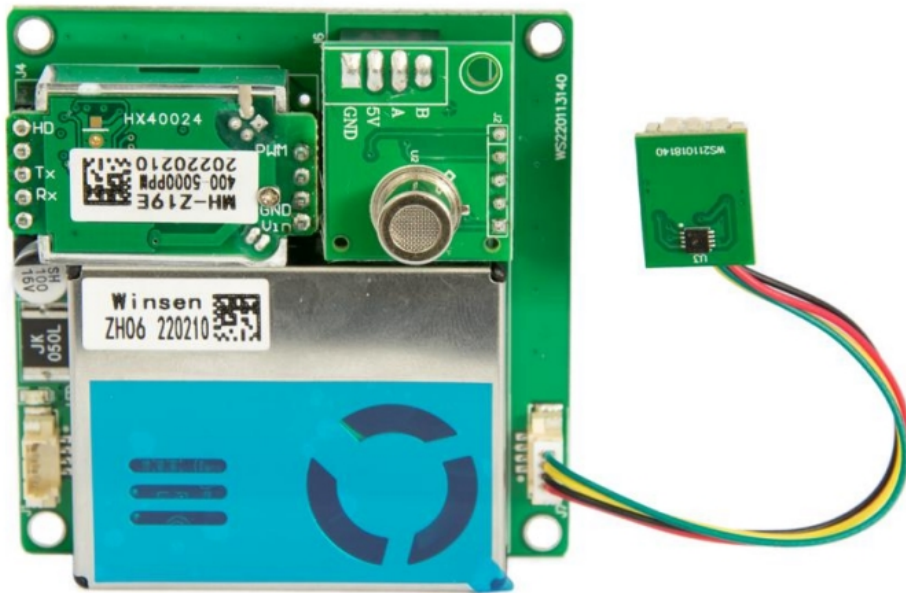


Fig1 : VOC version

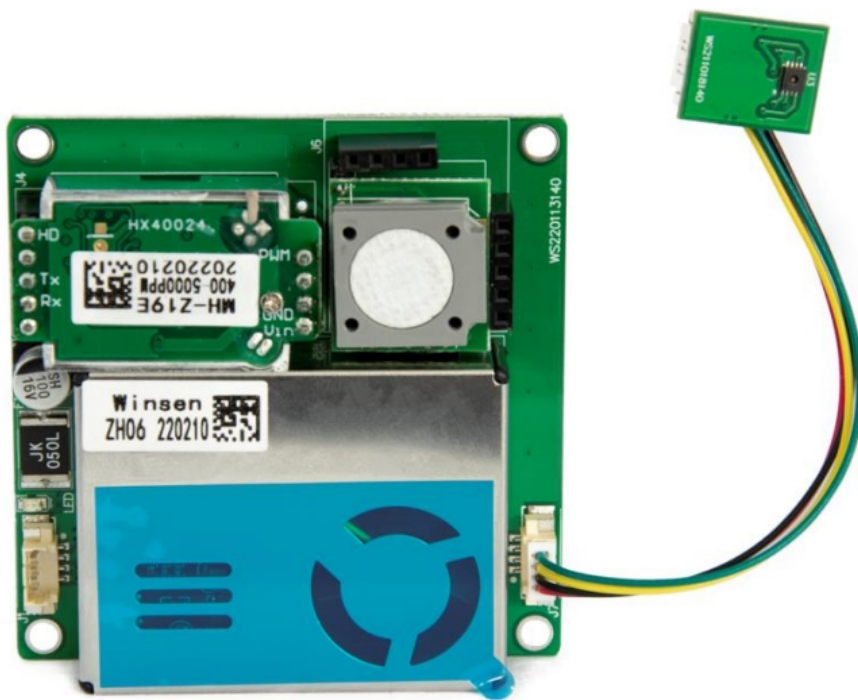
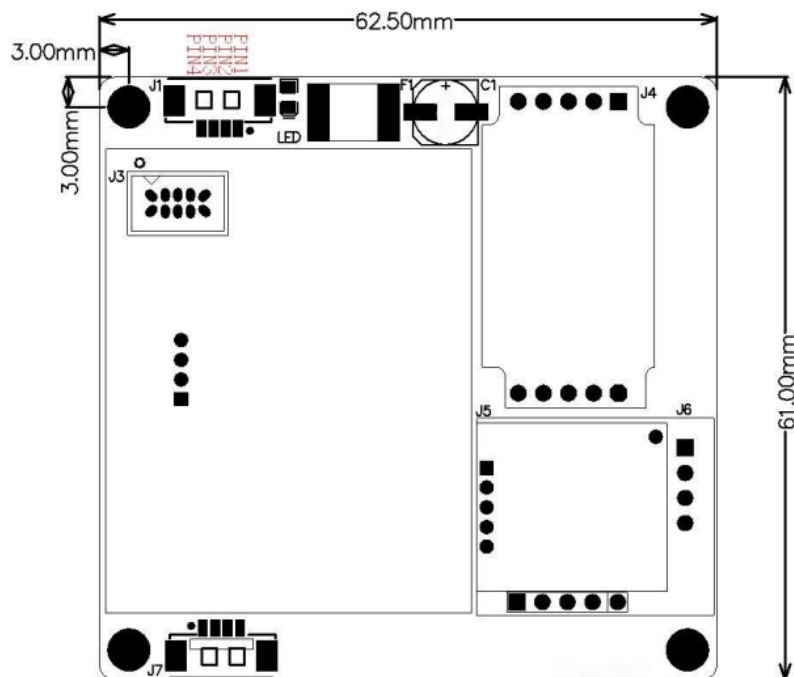


Fig2 : CH2O version

Module size



Pin Definition

- **PIN1:** GND Power input (Ground terminal)
- **PIN2:** +5V Power input (+5V)
- **PIN3:** RX serial port (serial port receiver for modules)
- **PIN4:** TX serial port (serial port sender for modules)

Serial communication protocol format

The host computer sends the format

Start character	length	Commandnumber	Data 1	Data n	checksum
HEAD	LEN	CMD	Data 1	Data n	CS
11H	XXH	XXH	XXH	XXH	XXH

Detailed protocol format

Protocol format	Detailed explanation
Start character	Upper PC send [11H] Module responses [16H]
Length	Frame byte length = data length+1 includes CMD+DATA
Command No	Command number
Data	Data read or written, with variable length
Checksum	Inverse of the sum of data accumulation

Serial protocol command number table

NO.	Function	Command NO.
1	To read the measure result	0x01
2	CO2 calibration	0x03
3	Start/Stop dust measurement	0x0C

Detailed description of protocol

- **To send:** 11 02 01 00 EC
- **Response** 16 0B 01

Identifying	Decimal valid range	Corresponding value	multiple
CO2	400~5000	400~5000ppm	1
VOC	0~3	0~3 level	1
CH2O	0~2000	0~2000μg/m3	1
PM2.5	0~1000	0~1000ug/m3	1
Temperature	500~1150	0~65°C	10
Humidity	0~1000	0~100%	10

1. The temperature value increases 500 from the actual measurement results, that is, 0 °C is corresponding to the number of 500. Temperature value = $(DF7 * 256 + DF8 - 500) / 10$
2. The measured value is represented by two bytes, the higher byte in front while the lower byte in the back.
3. After sending the inquiry command, if the response is received, the module will upload the data every second automatically. There is no need to repeat the command before the power is turned off.

Checksum and calculation

- unsigned char FucChecksum(unsigned char *i, unsigned char ln)
- unsigned char j, tempq=0;
- tempq+=*i; i++;
- tempq=(~tempq)+1;
- return(tempq);

CO2 zero point(400ppm) calibration

To send 11 03 03 01 90 58

response 16 01 03 E6

function CO2 zero point calibration

Instruction zero point means 400ppm please ensure that the sensor has already been working for 20mins at least at 400ppm concentration level before sending this command.

Start & Stop dust measurement

- **Send** 11 03 0C DF1 1E C2
- **Response** 16 02 0C DF1 CS
- **Function** Start/Stop dust measurement
- **Instruction**

1. Among send command, DF1=2 means starting measurement DF1=1 means stopping measurement;
2. Among response command, DF1=2 means starting measurement, DF1=1 means stopping measurement;
3. When the sensor receives the measurement command, it enters the state of continuous measurement by default.

- **Send** 11 03 0C 02 1E C0 //start dust measurement
- **Response** 16 02 0C 02 DA //the module is in “on-state dust measurement”
- **Send** 11 03 0C 01 1E C1 //stop dust measurement
- **Respond** 16 02 0C 01 DB //the module is in “off-state dust measurement”

Cautions

1. The PM2.5 sensor on this module is suitable for the detection of dust particles in ordinary indoor environments. The actual use environment should try to avoid soot environment, excessive dust particles, high humidity environment, such as: kitchen, bathroom, smoking room, outdoor, etc. If used in such an environment, appropriate protective measures should be added to prevent viscous particles or large particles from entering the sensor, forming a buildup inside the sensor, and affecting the sensor's performance.
2. The module should avoid contact with organic solvents (including silica gel and other adhesives), coatings, pharmaceuticals, oils and high-concentration gases.
3. The module cannot be completely encapsulated with resin material, and it cannot be immersed in an oxygen-free environment, otherwise the performance of the sensor will be damaged.
4. The module cannot be used in the environment containing corrosive gas for a long time. Corrosive gas will damage the sensor.
5. The module needs to be warmed up for more than 3 minutes when it is powered on for the first time.
6. Do not use this module in systems involving personal safety.
7. Do not use the module in narrow room, the environment should be ventilated well.
8. Do not install the module in a strong convection air environment.
9. Do not place the module in high-concentration organic gas for a long time. Long-term placement will cause the sensor zero point drift and slow recovery.
10. It is prohibited to use hot-melt adhesive or sealant to seal the module with a curing temperature higher than 80°C.
11. The module should be away from the heat source, and avoid direct sunlight or other heat radiation.

12. The module can't be vibrated or shocked

customer Support

Zhengzhou Winsen Electronics Technology Co., Ltd

Add.: NO.299 Jin Suo Road, National Hi-Tech Zone, Zhengzhou, 450001 China

Tel.: 0086-371-67169097 67169670


Fax: +86- 0371-60932988

E-mail: sales@winsensor.com

Website: www.winsen-sensor.com



Documents / Resources

 Multi-In-one Sensor Module (ZPHS01C) Manual Version: 1.0 Update time: 2015.12.06 Zhengzhou Winsen Electronics Technology Co., Ltd	Winsen ZPHS01C Multi In One Air Quality Monitoring Sensor [pdf] User Manual ZPHS01C Multi In One Air Quality Monitoring Sensor, ZPHS01C, Multi In One Air Quality Monitoring Sensor, Air Quality Monitoring Sensor, Quality Monitoring Sensor
---	--

References

- [Winsen Gas Sensor CO2 Sensor Air Quality Sensor Dust Sensor CO Sensor-Winsen Electronics](#)