



# Winsen ZPH05 Micro Dust Sensor User Guide

[Home](#) » [Winsen](#) » Winsen ZPH05 Micro Dust Sensor User Guide 

Winsen ZPH05 Micro Dust Sensor



## Contents

- 1 Statement
- 2 Profile
- 3 Features
- 4 Applications
- 5 Technical Parameters
- 6 Dimensions
- 7 Description of sensor detection principle
- 8 Pins Definition
- 9 Performance introduction
- 10 PWM output
- 11 UART output
- 12 Cautions
- 13 Customer Support
- 14 Documents / Resources
  - 14.1 References
- 15 Related Posts

## Statement

This manual copyright belongs to Zhengzhou Winsen Electronics Technology Co., LTD. Without the written permission, any part of this manual shall not be copied, translated, stored in data base or retrieval system, also can't spread through electronic, copying, record ways. Thanks for purchasing our product. In order to let customers use it better and reduce the faults caused by misuse, please read the manual carefully and operate it correctly in accordance with their instructions. If users disobey the terms or remove, disassemble, change the components in side of the sensor, we shall not be responsible for the loss. The specific such as color, appearance, sizes & etc, please in kind prevail. We are devoting ourselves to products development and technical innovation, so we reserve the right to improve the products without notice. Please confirm it is the valid version before using this manual. At the same time, users' comments on optimized using way are welcome. Please keep the manual properly, in order to get help if you have questions during the usage in the future.

## Profile

The sensor adopts the principle of optical contrast, which can accurately and quickly detect the level of dust and sewage on the optical path. The sensor has been aged and calibrated before shipment, which has a good consistency and sensitivity.

## Features

- Accurately identify different particles
- Output the number of particles
- Fast response
- Optical path blockage abnormal alarm
- Good anti-interference \*Small size

## Applications

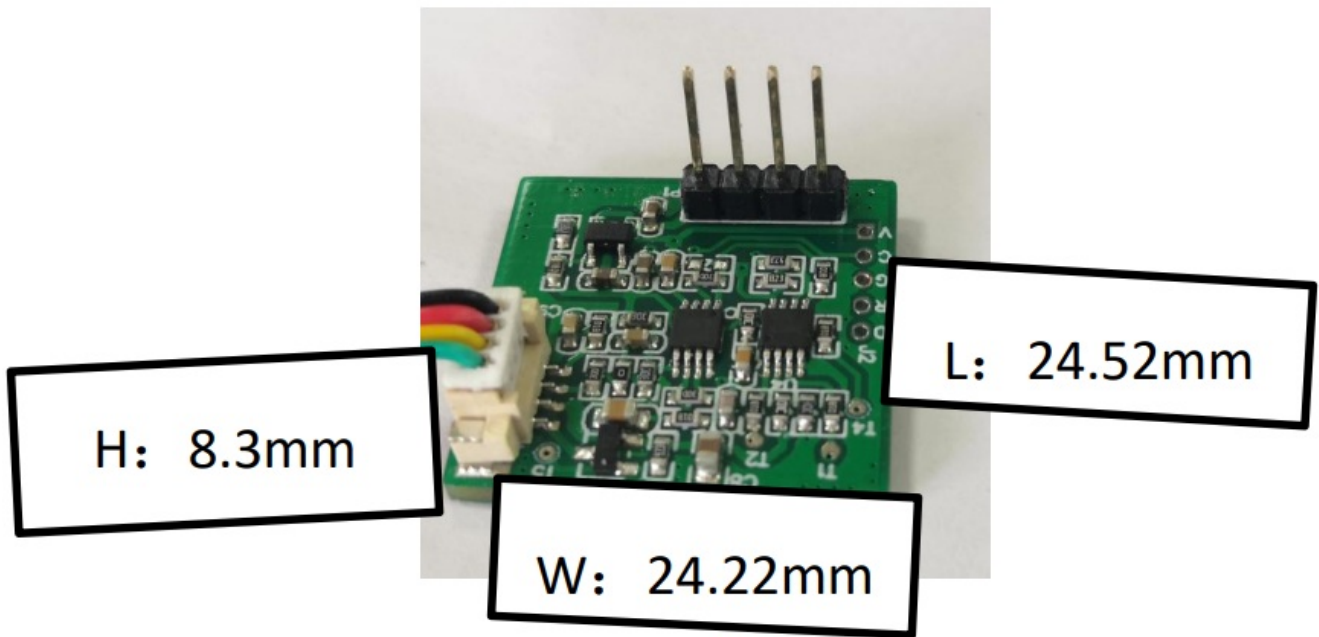
- Vacuum cleaner
- Scrubber \*Dust Mite Controller
- Sweeping robot

- Range Hood

Technical Parameters

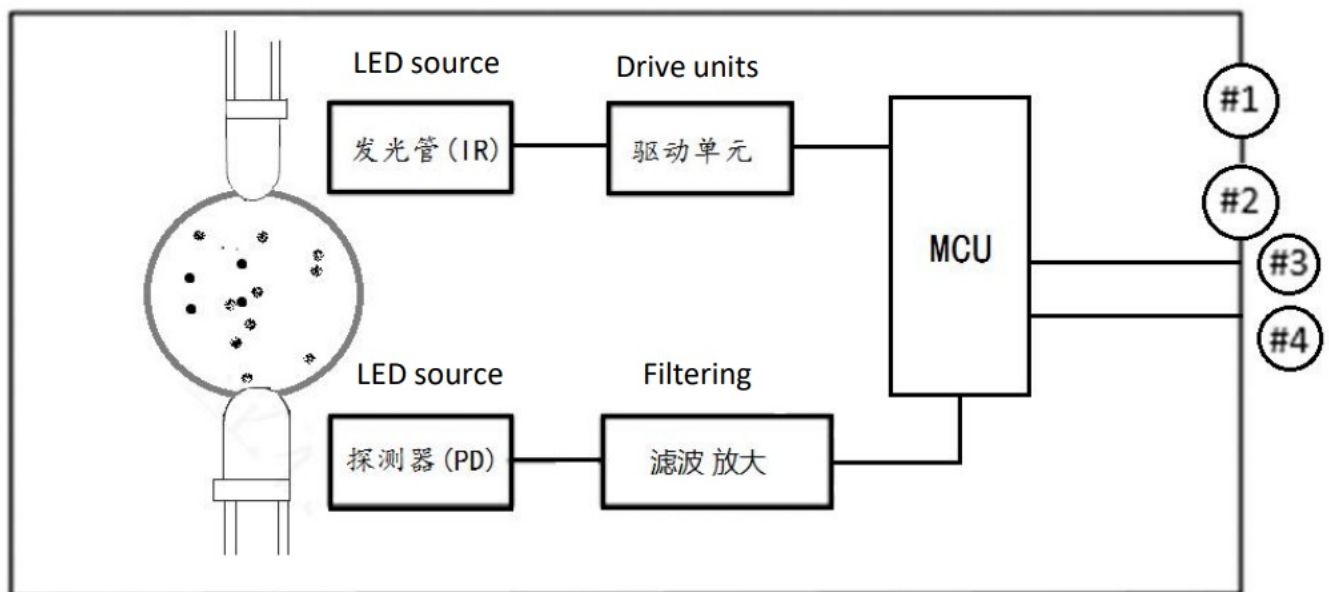
Model		ZPH05
Working voltage range		5±0.2 V (DC)
Output Mode		UART PWM
Output signal voltage		4.4±0.2 V
Detection ability		Smallest particles 10 μm diameter
Scope of test		1-4 grades
Warm-up time		≤2s
Working current		≤60mA
Humidity Range	Storage	≤95%RH
	Working	≤95%RH (non-condensation)
Temperature Range	Storage	-30°C 60°C
	Working	0°C 50°C
Size L×W×H		24.52×24.22×8.3 (mm)
Physical interface		EH2.54-4P(Terminal socket)

Dimensions



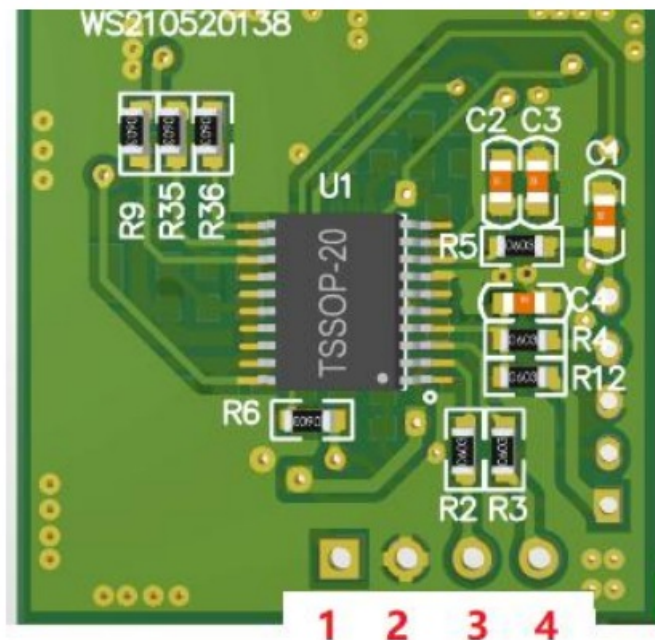
**Fig1**

### Description of sensor detection principle



**Fig 2. Principle schematic**

### Pins Definition



**Fig 3. Terminal diagram**

Pins Definition	
Pin 1	+5V
Pin 2	GND
Pin 3	TXD/PWM
Pin 4	RXD

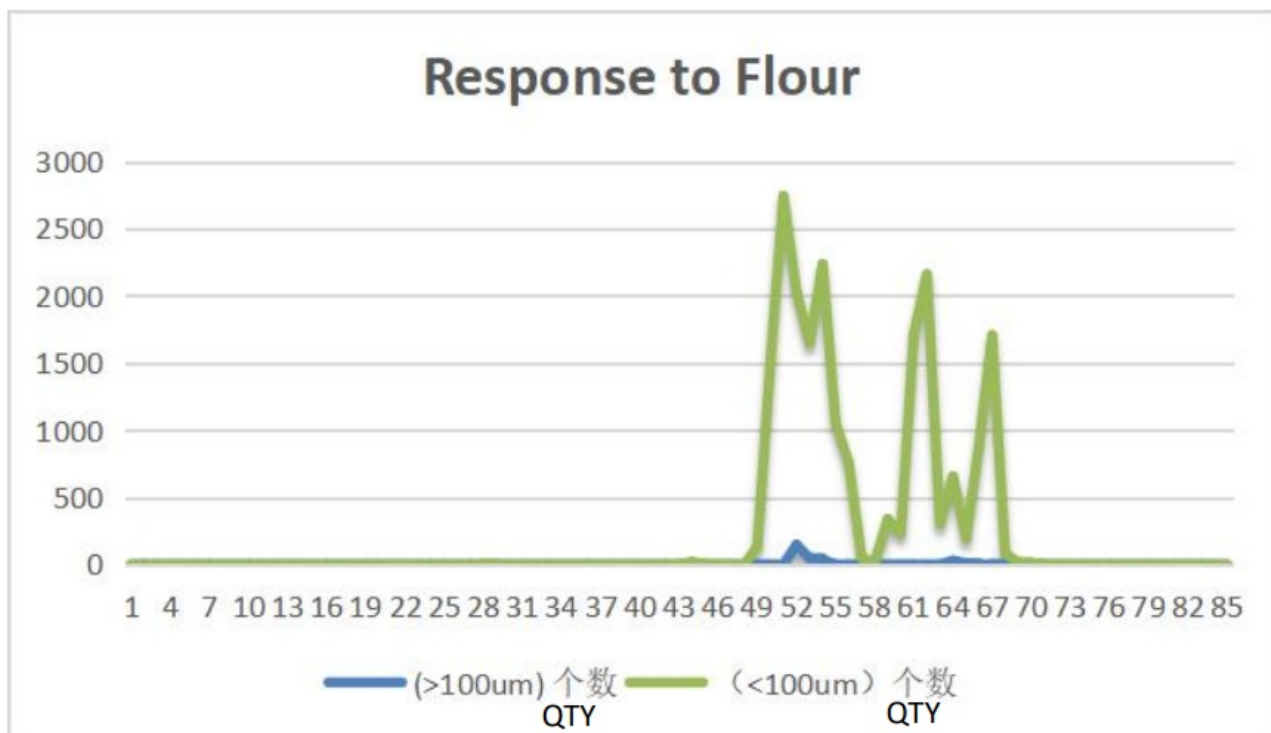
#### Remarks

1. The sensor has two output methods: PWM or UART, In UART mode, Pin4 is used as serial port data transmitter; In PWM mode, Pin4 is used as PWM output.
2. The output method of the sensor is set at the factory.

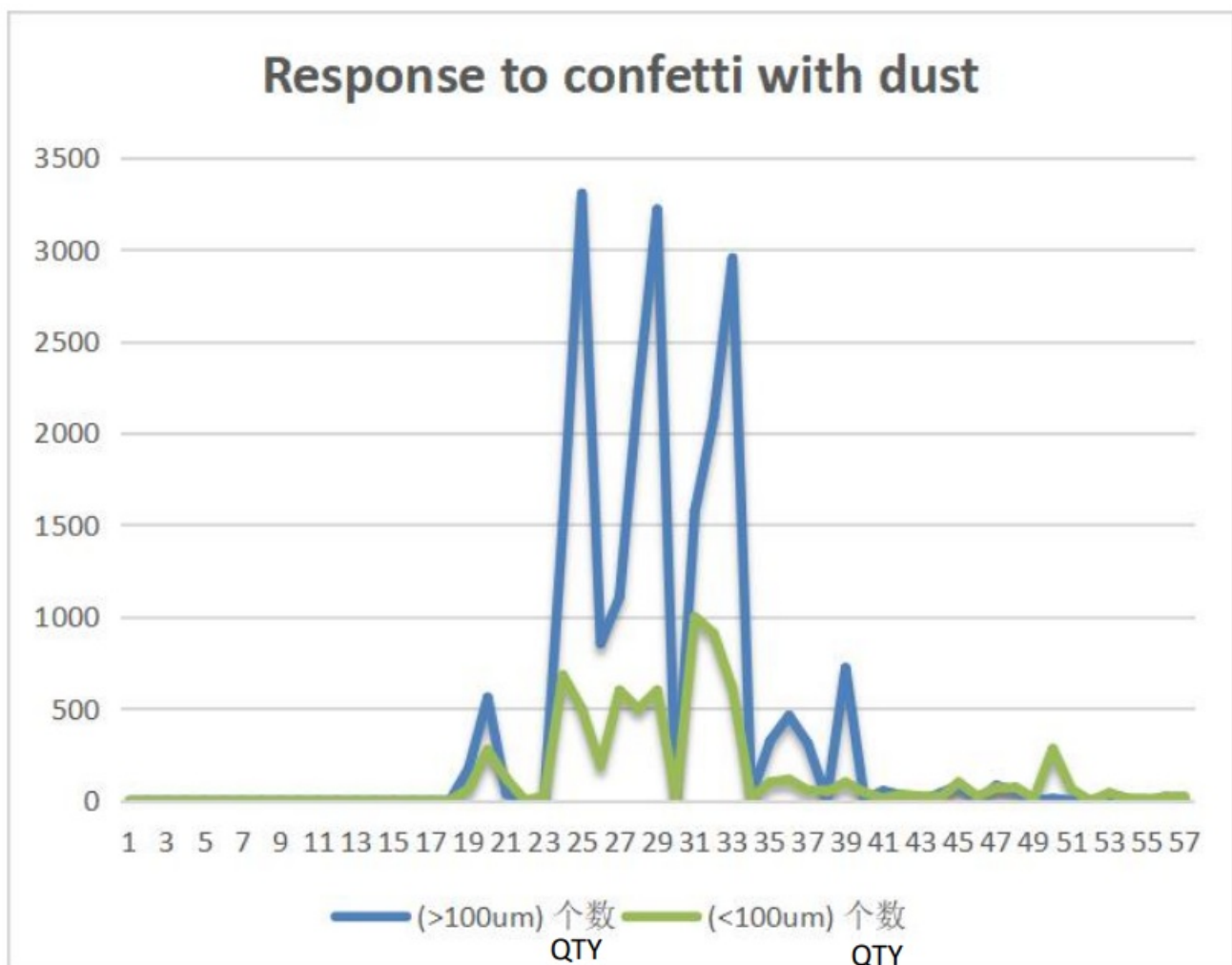
#### Performance introduction

The sensor can accurately identify particles of different sizes,

1. Response to flour using a vacuum cleaner fitted with ZPH05:



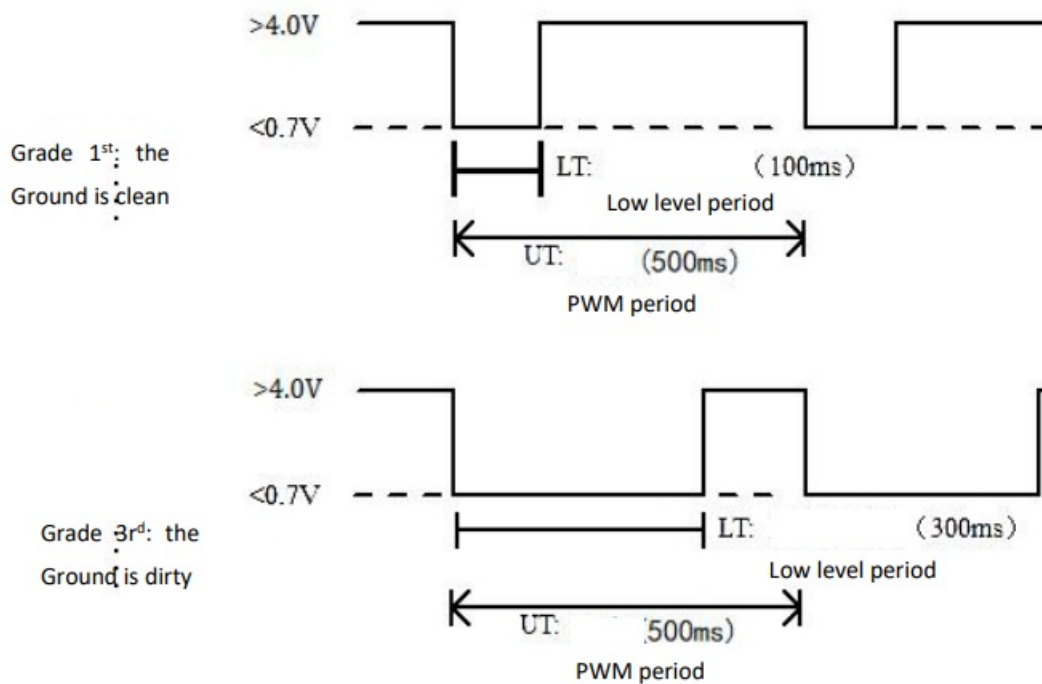
## 2. Response to confetti



## PWM output

In PWM mode, the sensor outputs a PWM signal through the PWM port (pin 3). The PWM period is 500mS, and the level is calculated according to the low level width. Levels 1-4 correspond to 100-400mS respectively. The low

pulse width of the pin output corresponds to the sensor level value. The level value is internally processed by software filtering, and the beating amplitude is relatively small. If the optical path of the sensor is seriously blocked, which affects the measurement, the sensor will output a PWM with a period of 500ms and a low-level width of 495ms until the optical path of the sensor returns to normal.



**Fig 4 PM2.5 output waveform**

Remarks 1.low pulse width 100ms = 1 grade

## UART output

In serial port mode, the sensor outputs serial port data through the TXD pin (pin 3), and send saframe of data every 500mS.

Serial port general settings:

Baud rate	9600
Interface level	4.4±0.2 V(TTL)
Data byte	8 bytes
Stop byte	2 byte
Check byte	no

## Cautions

## Installation:

1. The installation position of sensor transmitter and receiver should be designed at  $180^{\circ}\pm 10^{\circ}$
2. In order to ensure accuracy and consistency, the distance between the launch tube and the receiver should not be too long (recommended less than 60mm)
3. External light and foreign objects should be avoided in the optical beam area
4. The sensor's location should avoid strong vibration
5. The connection between the receiver and the sensor motherboard should avoid strong electromagnetic environment. When there is a wireless communication module (such as WiFi, Bluetooth, GPRS, etc.) around the sensor, it should keep a sufficient distance from the sensor. Please verify the specific safety distance by yourself.

## Transport & storage

1. Avoid vibration – During transportation and assembly, frequent and excessive vibration will caused is location of optoelectronic devices and affect the original calibration data.
2. Long term storage – Store in a sealed bag to avoid contact with corrosive gases to damage circuit board sand optical devices

## Customer Support

### hengzhou Winsen Electronics Technology Co., Ltd

**Add:** No.299, Jinsuo Road, National Hi-TechZone, Zhengzhou 450001 China

Tel: +86-371-67169097/67169670

Fax: +86-371-60932988

E-mail: [sales@winsensor.com](mailto:sales@winsensor.com)

Website: [www.winsen-sensor.com](http://www.winsen-sensor.com)

Tel: 86-371-67169097/67169670 Fax: 86-371-60932988

Email: [sales@winsensor.com](mailto:sales@winsensor.com)

Leading gas sensing solutions supplier in China!


Zhengzhou Winsen Electronics Technology Co., Ltd [www.winsen-sensor.com](http://www.winsen-sensor.com)



---

## Documents / Resources



<div><div> Micro-dust sensor (ZPH05-00001) <b>Manual</b> Version: 1.0 Issue date: 2015-11-18  郑州伟盛电子科技有限公司 Zhengzhou Winsen Electronic Technology Co., Ltd</div></div>	<div><a href="#">Winsen ZPH05 Micro Dust Sensor</a> [pdf] User Guide ZPH05 Micro Dust Sensor, ZPH05, Micro Dust Sensor, Dust Sensor, Sensor</div>
---	---

References

- [Winsen Gas Sensor\\_CO2 Sensor\\_Air Quality Sensor\\_Dust Sensor\\_CO Sensor-Winsen Electronics](#)