



WIMIUS P61 Projector with 5G WiFi and Bluetooth User Manual

[Home](#) » [Wimius](#) » WIMIUS P61 Projector with 5G WiFi and Bluetooth User Manual 

WIMIUS

P61 Projector User Manual



Thank you for purchasing WiMiUS P61 video projector. Please read this manual carefully before you use the projector.

If any questions during using it, feel free to contact us at support011@wimius.com.

We sincerely hope this projector can make your life more colorful.



Warnings

- High brightness lamp! Please don't look directly into the lamp.
- Adjusting the contrast, brightness and focal length according to different input signals is the key to make the picture clear; otherwise, the picture will be blurred;
- There is high voltage inside the projector. It is forbidden to open the cover and touch the internal parts of the machine.

Contents

- [1 Safety Precautions](#)
- [2 Accessories](#)
- [3 Projector Structure](#)
- [4 Remote control structure](#)
- [5 Specifications](#)
- [6 Projection size chart](#)
- [7 Focus function](#)
- [8 Signal source menu operation](#)
- [9 Connecting with Smartphones and Ipad](#)
- [10 Connecting with Bluetooth Speaker](#)
- [11 Other connections](#)
- [12 Installing the projector](#)
- [13 Main Function of the Menu](#)
- [14 FAQ](#)
- [15 Documents / Resources](#)
 - [15.1 References](#)
- [16 Related Posts](#)

Safety Precautions

1. Clean

When clean this projector, please pull out the power cable. Use a wet cloth to clean, dont use any detergent that may damage the unit.

2. Accessory

Please use our recommended accessory. Or it will damage the projector.

3. Correct environment

Do not place the projector in a wet environment, like damp basement or near the swimming pool, etc.

4. Ventilation

The ventilation is equipped for the projector to work stably. Do not put anything around the vents. Or it will cause the projector heating up.

5. Power

Please make sure the power is within the required power range.

6. Thunder

For thunder day, please unplug the power cable from the projector.

7. Repair

Due to high voltage inside, please do not open or try to repair the projector by yourself. Please ask a professional technician to repair the projector.

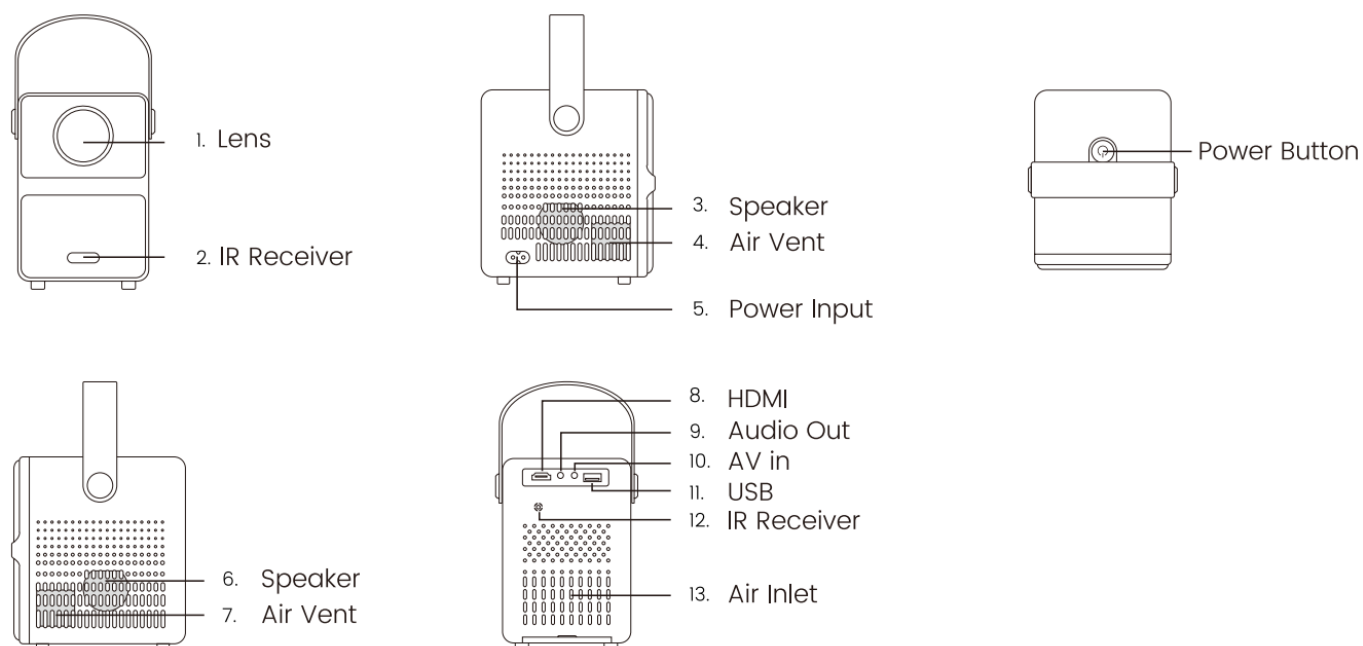
8. Keep away from heat device

Please make sure the projector is far away from any heat devices which will damage the projector.

Accessories

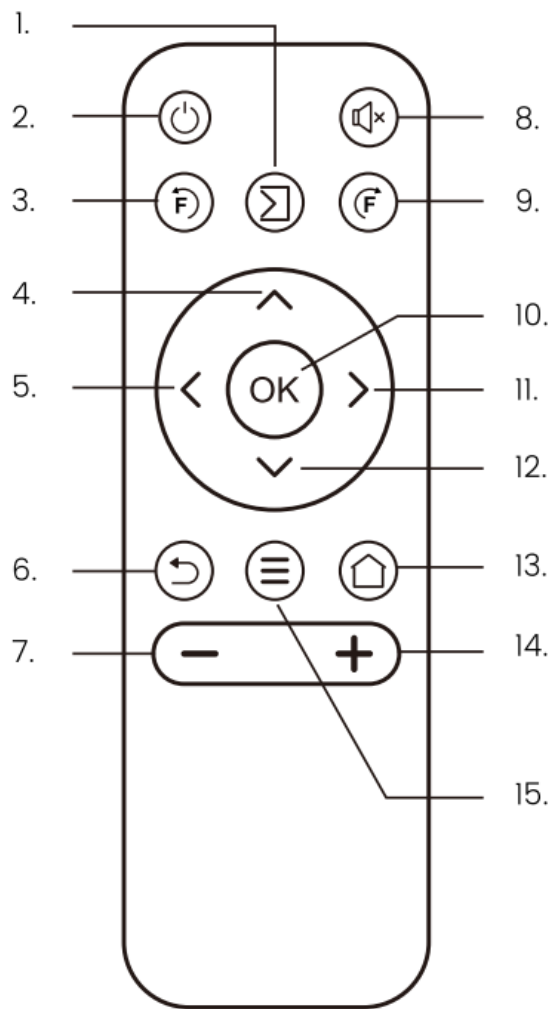
- Projector x 1
- 3in1 AV Cable x1
- Remote Controller x
- HDMI Cable x 1
- Power Cable x
- User Manual x |

Projector Structure



Note : Please refer to the product appearance , this figure is for reference only.

Remote control structure



1. Play/Pause
2. Power Key
3. Electric Focus Button
4. Up
5. Left
6. Back
7. Volume-
8. Mute
9. Electric Focus Button
10. Ok
11. Right
12. Down
13. Input Source
14. Volume+
15. Menu

Note:It needs 2 external 2 AAA batteries.

Specifications

Model No.: P61			
Imaging System:	LCD	Light source:	LED
Projection distance:	0.85-5m	Projection size:	32-200"
Color:	16.8M full color	Resolution:	1920*1080 Supported
Focus function:	Electric focus(Focus on remote)	Input Interface:	AUDIO OUT \ USB \ HDMI \ AV I N
Aspect Ratio:	16:9 /4:3	Power:	AC100-240V
Output Interface:	3.5mm earphone	Projector Weight:	= 0.8kg

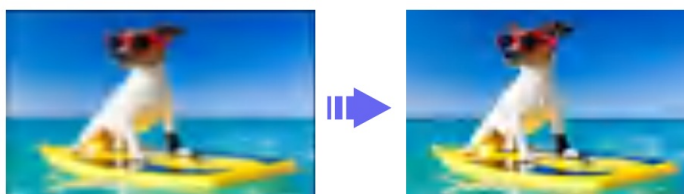
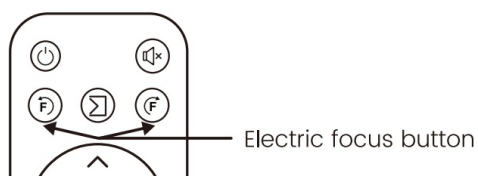
Projection size chart

Distance	Screen size
0.85m	32"
1.3m	50"
2.1m	80"
3m	114"
5m	200"

Note: Optimum projection distance: 2.5m

Focus function


Get clear images in just one step press the electric focus button on the remote control to make the picture clear.



Signal source menu operation



Before using the projector to play videos, please choose the corresponding signal source of your device.

1. Operate through the remote control: press “” and then press [↑] / [↓] to confirm.
2. For USB, no need to choose the signal source. The machine will detect them automatically.



Connecting with Smartphones and Ipad

Wireless Connection

P.S: The fluency of screen mirroring with wireless connection will be affected by the network environment. A bandwidth of 100Mbit or more is recommended when using screen mirroring. Make sure your mobile device is closed to the projector when using wireless connection. A distance within 1 meter is recommended.

For ios system (Method : Setting with Home Wi-Fi)



Attention: Your device and the projector should be in the same home WiFi.

1. Turn on the WiFi Setting of projector and click “wireless” to choose your home WiFi .
2. Enter the right password, then click “connect” to connect, please wait 3-5 seconds to establish the connection.
Once connected, it will remember the password of the connected WiFi.
3. Turn on the WiFi setting of your IOS mobile device, then connect it the same home WiFi as the projector.
4. Then click ‘Mcast’ () as the input Source of your projector and click the ‘Airplay’ ()
5. Open the screen of your iOS mobile device and click “Screen Mirroring” to search for the projector, then select “P61 WiFi Projector” from the searching results to connect.
6. Succeed.

For Android System

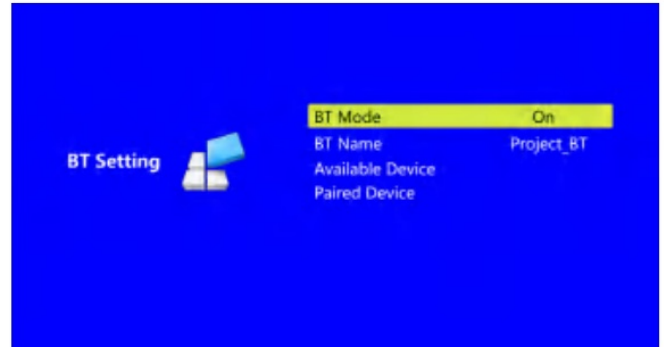
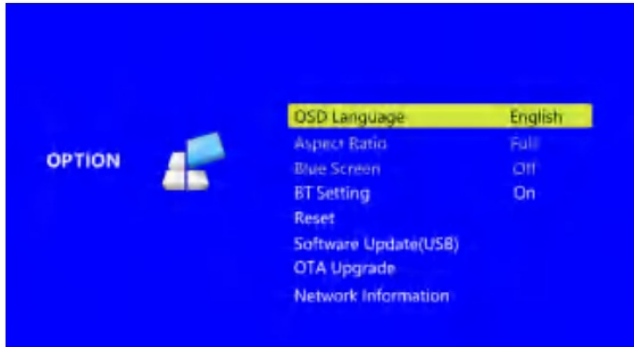
To activate this function, your android device must support Multi-Screen/ Wireless display. Names may differ from different devices.

Method :

1. Then click ‘*Mcast’ () as the Input Source of your projector and click the ‘miracast’ ()
2. Open the screen of your Android mobile device and click “Screen Mirroring” to search for the projector, then select ‘P61 WiFi Projector’ from the searching results to connect.
3. Succeed

Connecting with Bluetooth Speaker

1. Turn on your Bluetooth speaker.
2. Turn on the Bluetooth setting of your projector.
3. Select your Bluetooth speaker to connect.
4. Succeed.



Other connections

Connecting with PC

1. Connect projector with PC by HDMI cable.
2. Choose the media signal channel :“HDMI”.

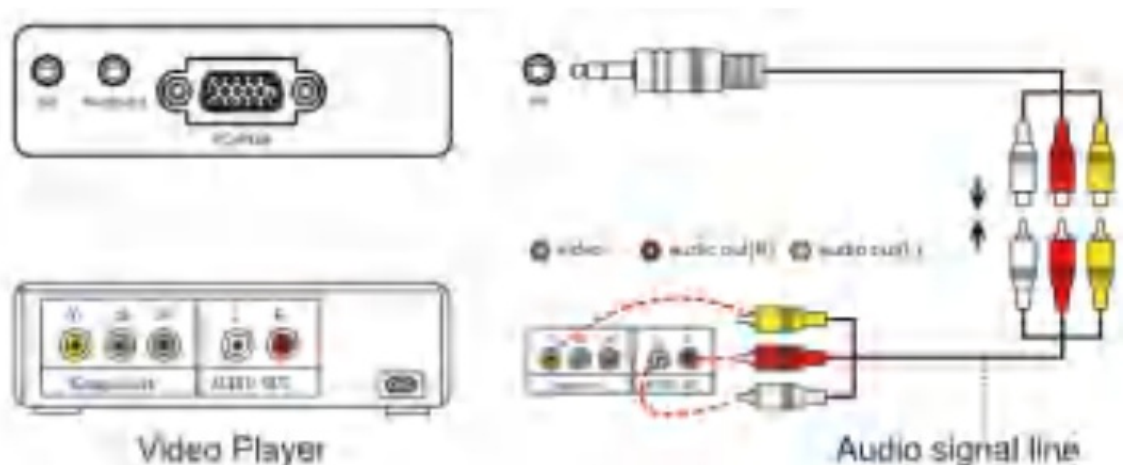
PS: To connect with macbook, an external HDMI to type C cable is needed.

Connecting with Sound bar

1. Use the 3.5mm aux cable to connect with soundbar.
2. Turn on the projector and the sound bar.
3. More details, please contact seller at support01@wimius.com.

Connecting with DVD

1. Use the AV cable coming with the projector to connect with DVD.
2. Turn on the projector and DVD player.



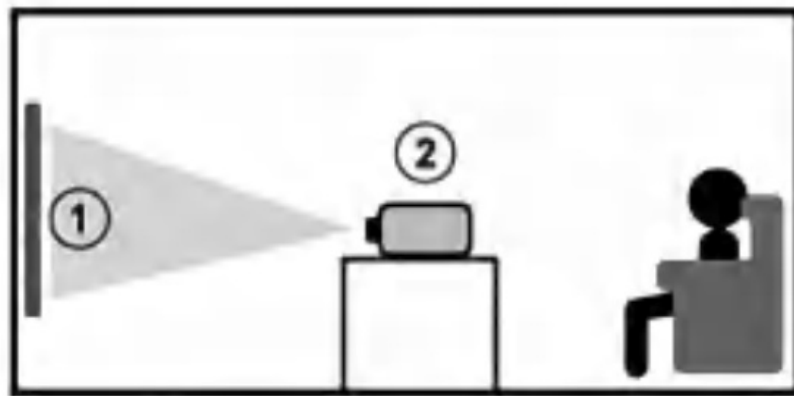
USB Multimedia Connecting

1. Insert the USB drive to corresponding interface.
2. Choose the video or picture to play.

USB Format: FAT,FAT32:8G/16G/32G and NTFS:64G

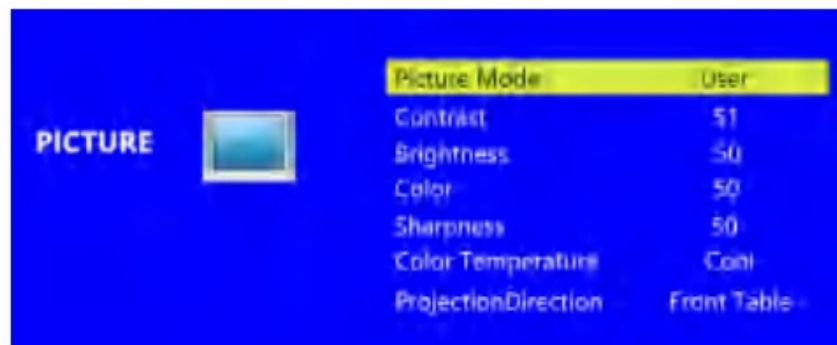
Installing the projector

This projector doesnt have keystone correction, so we suggest to put it on the desk, facing front to the screen. Kindly please dont tilt the projector.



Main Function of the Menu

Picture Menu

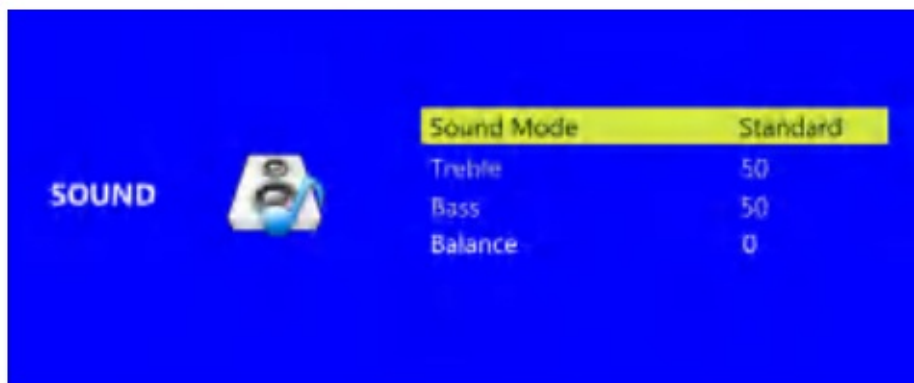


Picture	Menu included	Function
Picture Mode	Standard/Dynamic/Mild/User	to adjust the tontrast/Brightness/Color/Sharpness° of the ima ge
Color temperature	Cool/medium/warm	to adjust the color temperature
Projection Direction	Front/Rear Table/Front/ Rear on ceili ng	Flip the image

Important Notices:

Picture Mode: Only under mode “ User” we could change the Contrast/Brightness/Color/Sharpness of the picture.

Sound Menu



Sound	Menu included	Function
Sound Mode	standard/movie/music/ Sports/User	adjust the sound
Balance	-50 to +50	Balance the built-in speaker

Note:

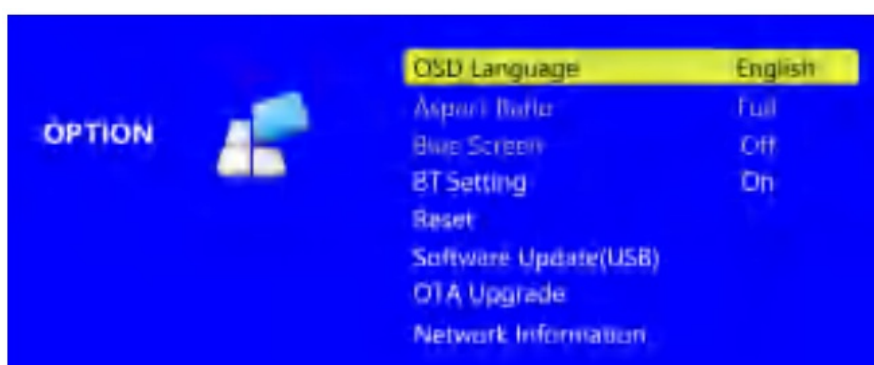
In the Sound mode “User” interface, you can adjust the “Treble/Bass” of the image by using the +/- button on the remote control in the “0-100” range.

Time Menu



Time	Menu included	Function
Sleep Timer	OFF/10min/20min/30min/60min/90min	to set the sleep time of the projector
Auto Sleep	OFF/3H/4H/5H	Auto sleep time of the projector
OSD Timer	5S/10S/15S/20S/25S/30S	Set the menu duration time

Option Menu



OPTION	Menu included	Function
OSD Language	English, French, German, Italian, Spanish , Japanese, 20 several language	Choose a language
Aspect Ratio	4:3/16:9	Aspect ratio let you configure how images are displayed
Blue Screen	Off	state when power on without signal
BT Setting	On/Off	Choose the Bluetooth mode to connect the extra speaker
Reset	Restore Factory Default	Restore all settings to original factory settings
Software Update(USB)	Update via software file	Update software via USB connection
OTA Upgrade	Upgrade online	Upgrade Software online
Network information	Network off/Wireless	Turn on/off network

FAQ

Questions	Solutions
Can't play video in Apps like Netflix, Hulu, Prime	Those APPS are limited with HDCP. Only when connected with TV stick, Chromecast, it can support these apps.
Wifi connection is not stable well.	1.Please check whether the network of your phone is well 2.Make the distance of phone and projector within 1 meters.
Indicator light is off when plug into power supply	1.The power cable not connected well 2.The power button on the back of the projector is off.
Can't connect with bluetooth speaker	1.Plugging an external bluetooth transmitter to the projector 2.Connect with 3.5mm aux cable 3. Please email us with the bluetooth speaker brand and model

Questions	Solutions
No image on the screen	1.Is the channel set-up correct? 2.Is there input signal? 3.Is the input cable plugged well or in the wrong position? 4 .Under PC mode, is the refresh rate > 75 KHz?
Picture right no sound	1.Input cables connected right? 2.Volume at minimum or on Mute. 3.Turn off the dolby of the input devices.
It will shut off automatically after turn on for a while	1. Is there a barrier around the ventilation? 2. Low voltage or big voltage fluctuations. 3.Check the over-heat protection system.
Can't find devices when connected with hard drive or flash drive?	1.Re-plug the device. 2.Check if the device is broken.
Can't play the movies	1.The format of the video is right? 2.Files are broken? 3.Device is broken?

Power Input: AC100-240V, 50-60HZ, BOW

FCC ID: 2A4K9-U5S

FCC Statement

This device complies with Part 15 of the FCC Rules. Operation is subject to the following two conditions:

1. This device may not cause harmful interference, and
2. This device must accept any interference received, including interference that may cause undesired operation.

warning: Changes or modifications not expressly approved by the party responsible for compliance could void the user's authority to operate the equipment.

Note: This equipment has been tested and found to comply with the limits for a Class B digital device, pursuant to Part 15 of the FCC Rules. These limits are designed to provide reasonable protection against harmful interference in a residential installation. This equipment generates uses and can radiate radio frequency energy and, if not installed and used in accordance with the instructions, may cause harmful interference to radio communications. However, there is no guarantee that interference will not occur in a particular installation. If this equipment does cause harmful interference to radio or television reception, which can be determined by turning the equipment off and on, the user is encouraged to try to correct the interference by one or more of the following measures:

- Reorient or relocate the receiving antenna.
- Increase the separation between the equipment and receiver.
- Connect the equipment into an outlet on a circuit different from that to which the receiver is connected.
- Consult the dealer or an experienced radio/TV technician for help.

FCC Radiation Exposure Statement

This equipment complies with FCC radiation exposure limits set forth for an uncontrolled environment. This equipment should be installed and operated with minimum distance 20cm between the radiator & your body. This device contains licence-exempt transmitter(s) /receiver(s) that comply with Innovation, Science and Economic

Development Canada's licence-exempt RSS(s). Operation is subject to the following two conditions:

1. This device may not cause interference.

2. This device must accept any interference, including interference that may cause undesired operation of the device.

This equipment complies with IC exposure limits set forth for an uncontrolled environment. This equipment shall be installed and operated with minimum distance 20cm between the radiator & body.

Correct Disposal of this product



This marking indicates that this product should not be disposed with other household wastes throughout the EU. To prevent possible harm to the environment or human health from uncontrolled waste disposal, recycle it responsibly to promote the sustainable reuse of material resources. To return your used device, Please use the return and collection systems or contact the retailer where the product was purchased. They can take this product for environmental safe recycling.

Declaration of Conformity

We (Manufacturer is responsible for this declaration)

YABER TECHNOLOGIES CO.LIMITED

(Company name)

Room 406, 4 Floor, B Building, BanTian International Center, HuanCheng South Road, BanTian Street, LongGang District, Shenzhen

(Company address)

declare under our sole responsibility that the product

Trade name: MiMiUS

Equipment: Entertainment Projector

Model No. : P61

to which this declaration relates is in conformity with the essential requirement set out in the Council Directive on the Approximation of the laws of the Member States relating to RED Directive (2014/53/EU) & ROHS(2011/65/EU) product is responsible to affix CE marking, the following standards were applied:

EN 62368-1:2014 + All: 2017

EN IEC 62311-2020

ETSI EN 301 489-1 V2.2.3(2019-11)

ETSI EN 301 489-17 V3.2.4(2020-09)

EN 55032:2015

EN 55035:2017

EN 61000-3-2:2019

EN 61000-3-3:2013+AL2019

ETSI EN 300 328 V2.2.2(2019-07) 1EC62321-3-1:2013

HEC62321-4:2013

HEC62321-5:2013

1EC62321-6:2015

1EC62321-7-1:2018

1EC62321-7-2:2017

1EC62321-8:2017

Full Name: George.wang Position: Approbation Manager

Signature: George.wang Place/Date: Shenzhen,China/Mar.10-2022



The terms HDMI, HDMI High-Definition Multimedia interface, HDMI trade dress and the HDMI Logos are trademarks or registered trademarks of HDMI Licensing Administrator, Inc.



Enjoy Every Moment



support@wimius.com

p 61.22.08.08

Documents / Resources



[WIMIUS P61 Projector with 5G WiFi and Bluetooth](#) [pdf] User Manual

P61 Projector with 5G WiFi and Bluetooth, P61, Projector with 5G WiFi and Bluetooth, 5G WiFi and Bluetooth, Bluetooth

References

- [User Manual](#)

Manuals+.