



WiFi V3 Motion Sensor Instructions

[Home](#) » [WiFi](#) » WiFi V3 Motion Sensor Instructions

Contents [[hide](#)]

- [1 WiFi V3 Motion Sensor](#)
- [2 Installment](#)
- [3 Specifications](#)
- [4 Network Configuration](#)
- [5 Documents / Resources](#)
- [6 Related Posts](#)

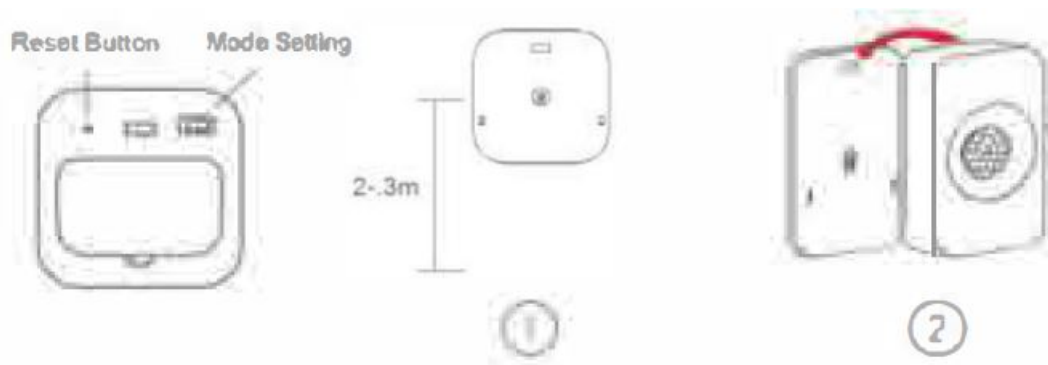


WiFi V3 Motion Sensor

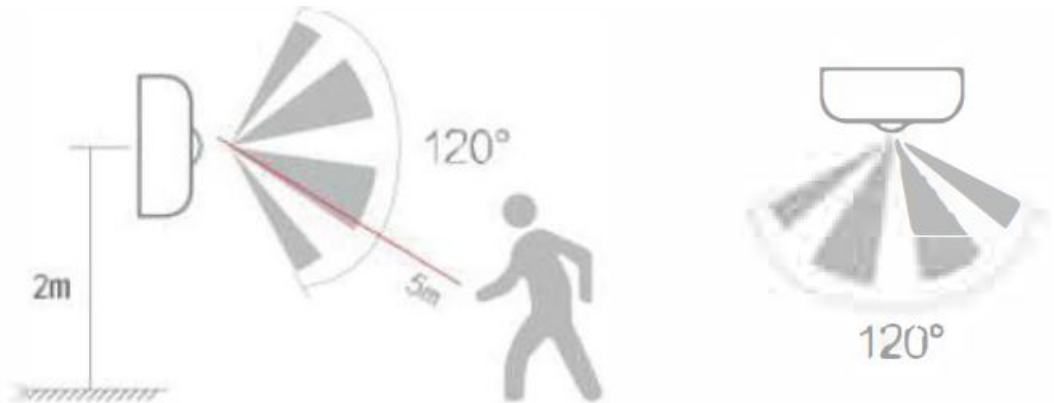


Installment

1. Use the Screw to install the base of the PIR base to the wall or other vertical place.
2. install the main body on the base.



Detect angle and distance:



Specifications

- Battery: AAAI.SV x 3
- Standby current, 20uA
- Standby time, 1 years
- Standard Mode, S months (15 times/day)
- trigger one time every two minutes
- Eco Mode, 5 months (15 times/day)
- trigger one time every four minutes
- Sensitivity distance: 5m
- Sensitive angle: 120°
- Wireless Type: 2.4GHz
- Protocol: IEEE 802.11b/g/n
- Wireless Range: 45m
- Operating Temperature: -30-70 C (-80°F-158°F)
- Operating Humidity: 20% ,... , 85%
- Storage Temperature: -40°C- 80°C (-104°F-176°F)
- Storage Humidity: 0% ,... , 90%
- Size: 65mm x 65mm x 30mm

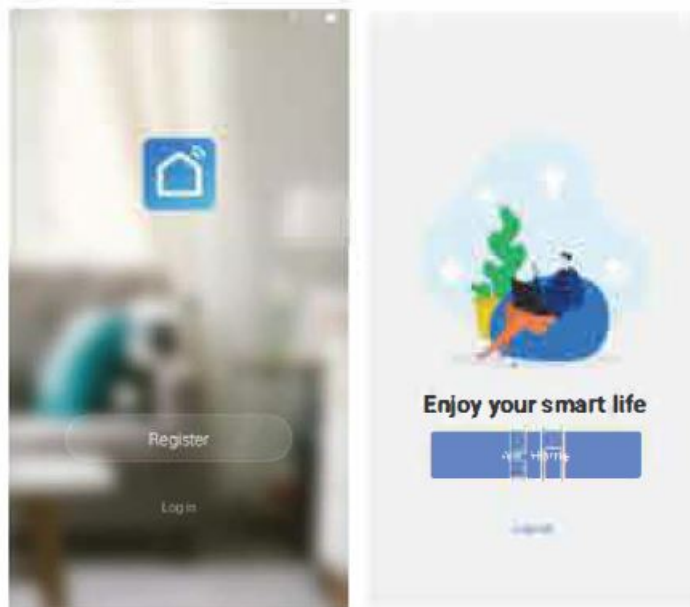
Download App

1. Android phone: download "Smart life" from Google Play.
2. iPhone: download "Smart life" from App STORE.



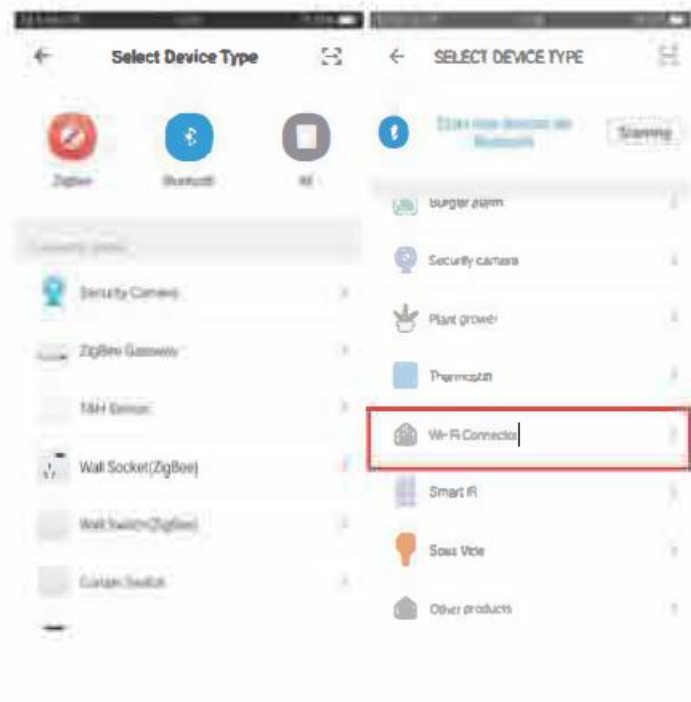
Add Device

1. Run "Smart life" from your smartphone desktop.
2. Register and log in



Motion Sensor

Select Device Type, and select "Wi-Fi Connector" in the list to add the device.

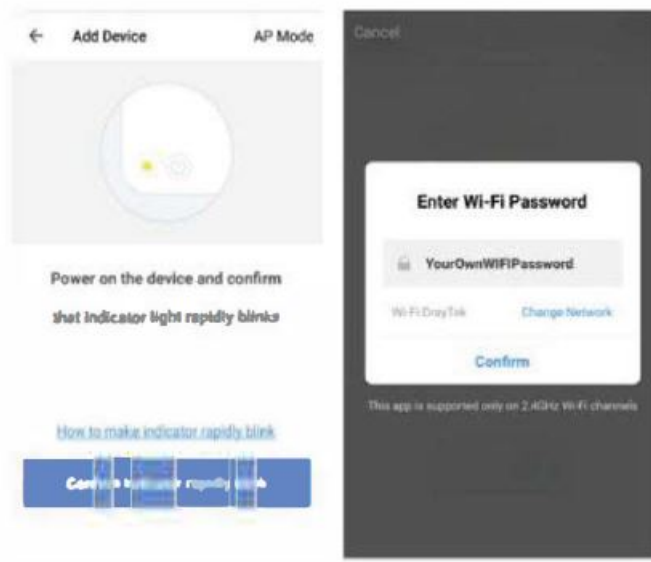


Network Configuration

There are two methods to bind the door sensors to App. One is Smart Wifi Mode and the other is AP Mode.

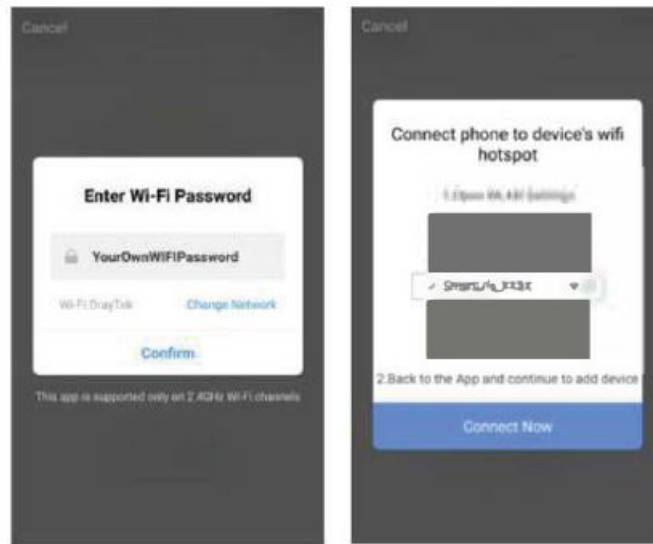
1. Smart Wifi Mode:

Press and hold: "WiFi Coding/ RESET Button" for 6 seconds, the indicator will blink rapidly. The device is in Smart Wi-Fi Mode.

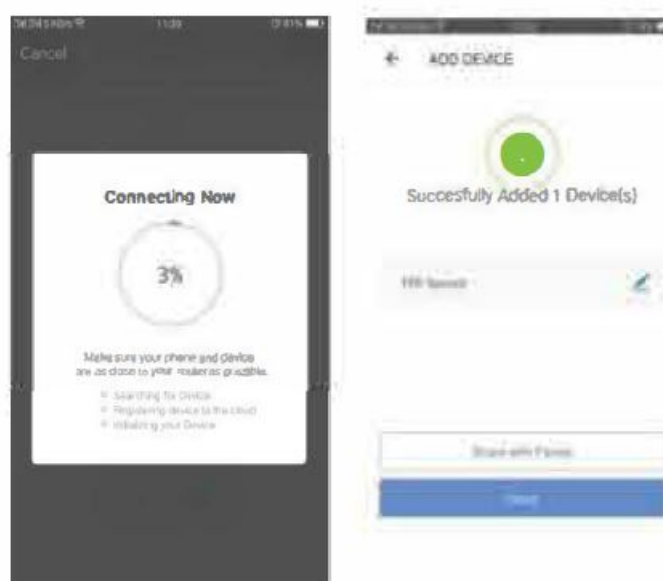


2. Ap Mode:

Select AP Mode at upper right corner on the App. Press and hold: "WiFi Coding/ RESET Button" for 6 seconds again, the indicator will blink slowly, and the device is in AP mode. After entering your WiFi password and connect your phone to door



3. Connecting

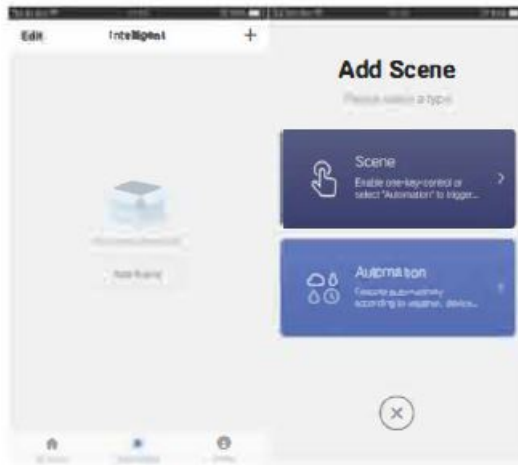


Motion Sensor:



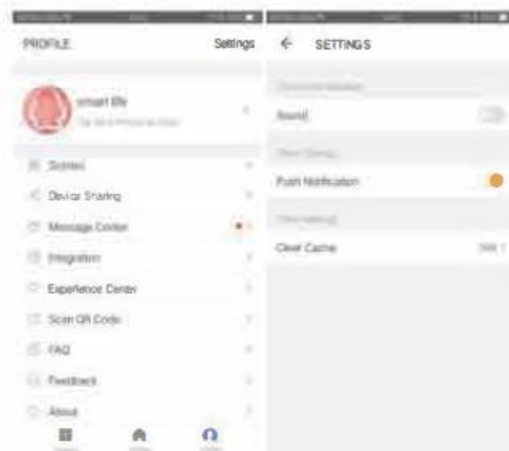
Customize Scenes

associate two devices to work to create your own scene



Share & Push Notification


Share: Share your devices to others directly.



LED State

Device Status	LEO State
SmartWi-Fi	LED will rapidly blink
AP mode	LED will slowly blink
be t triggered	Red once
Reset	Long press the reset key for 4s , red led light rapidly blink 20s,then it will be r eady for configuration

Documents / Resources

	WiFi V3 Motion Sensor [pdf] Instructions V3 Motion Sensor, V3, Motion Sensor
---	---

