



## WiFi Independent PIR Infrared Detection Alarm User Manual

[Home](#) » [WiFi](#) » WiFi Independent PIR Infrared Detection Alarm User Manual 

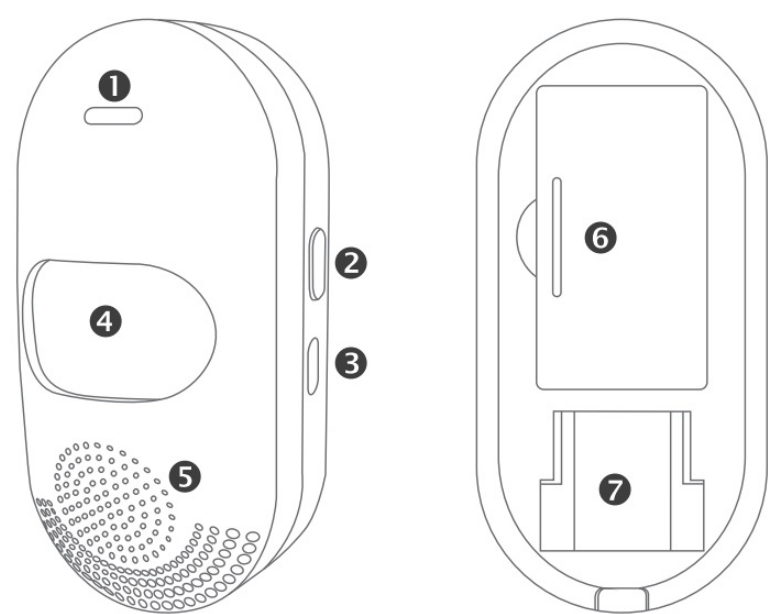
WiFi Independent PIR Infrared Detection Alarm User Manual



**Contents**

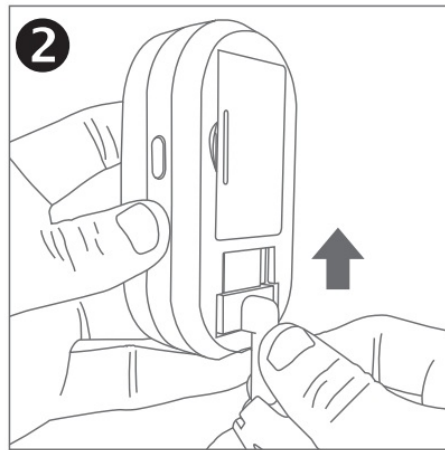
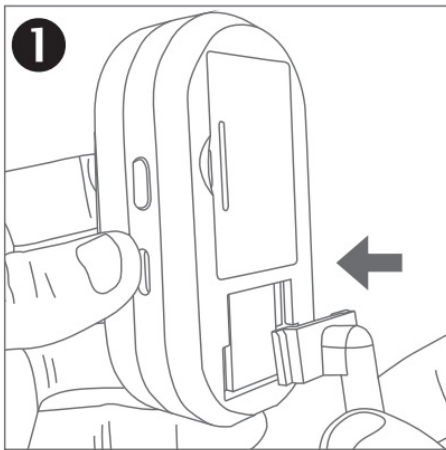
- 1 Product diagram
- 2 Mobile app
- 3 working status selection
- 4 installation
- 5 Common problem
- 6 Detection angle
- 7 Technical Parameters
- 8 Documents / Resources
- 9 Related Posts

**Product diagram**



1.LED lights	2.Set key
3.USB power port	4.Detection window
5.buzzer	6.Spare battery compartment
7.Bracket slot	

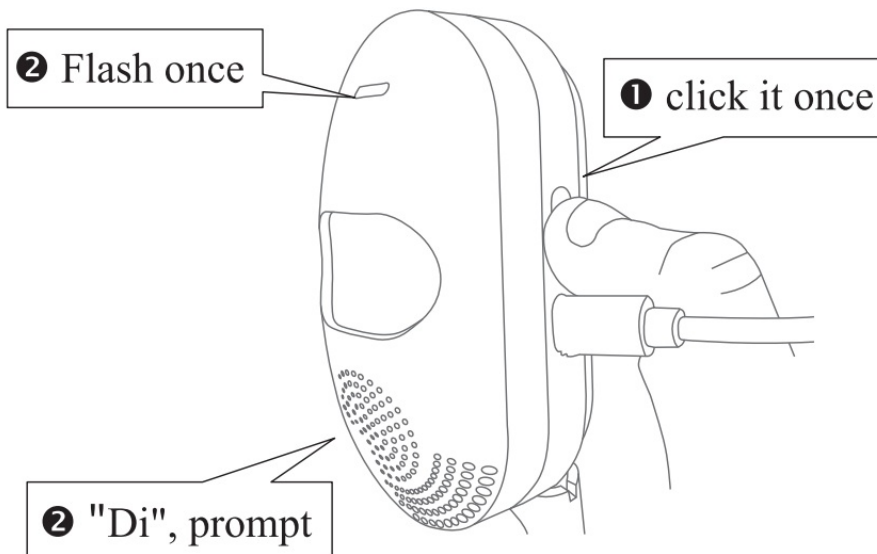
1. Mountiong brackets



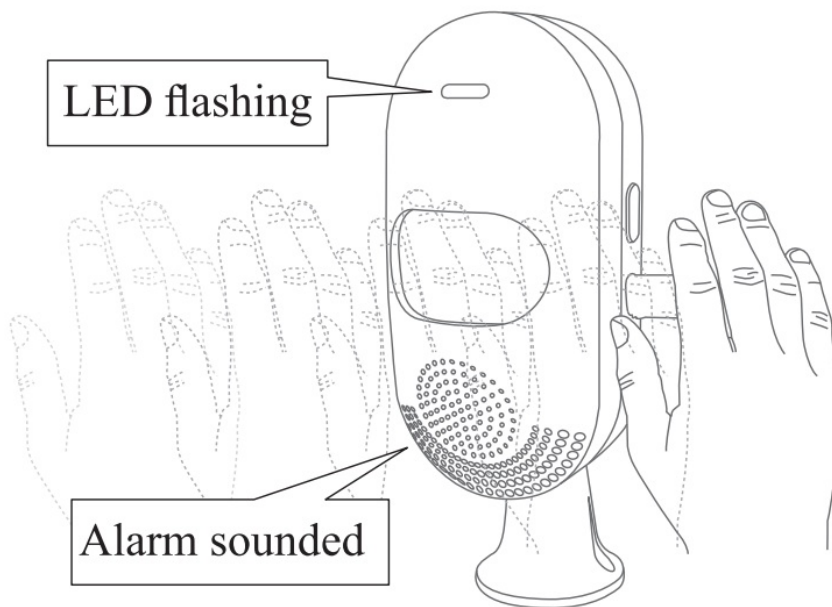
2. Connect to power



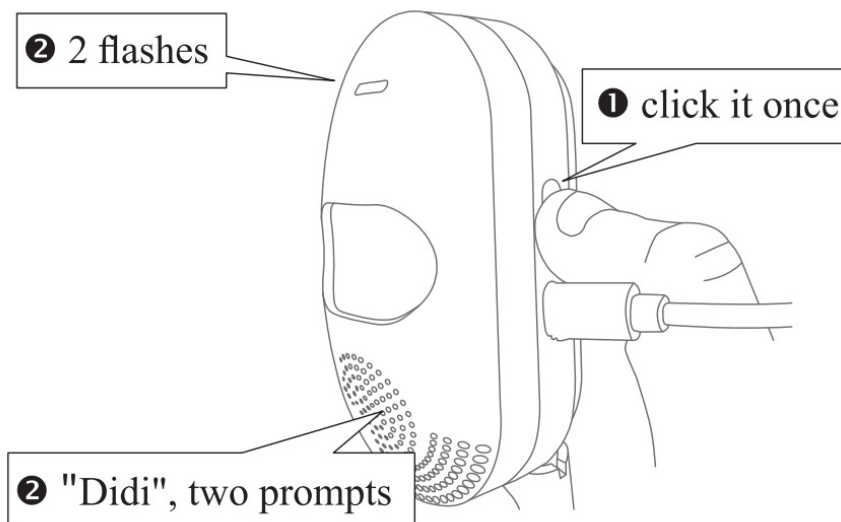
3. Turn on (enter induction alarm)



4. Trigger induction alarm



#### 5. Turn off the sensor alarm



### Mobile app

#### 1. Download app

- Tuya smart



- Smart life



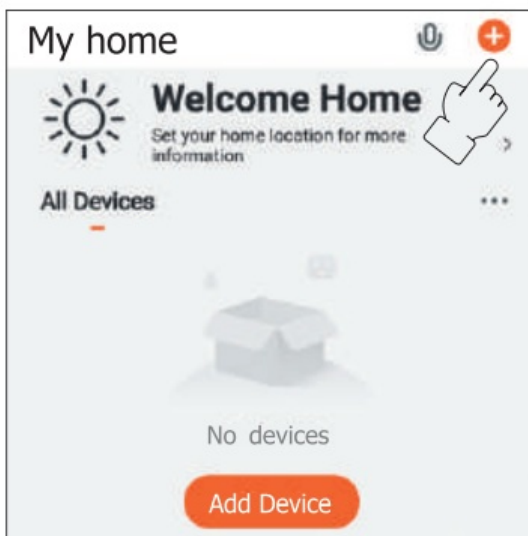
- Scan the QR code to download the APP.
- IOS: Download the “Tuya Smart” or “Smart Life” at APP Store.
- Android: Download the “Tuya Smart” or “Smart Life” at Google Play.

## 2. Register/ login tuya smart

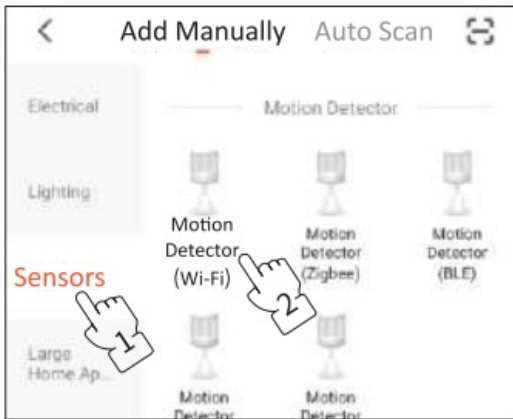


## 3. Network configuration with mobile phone (two methods) Method 1: Wi\_ Fi quick connect

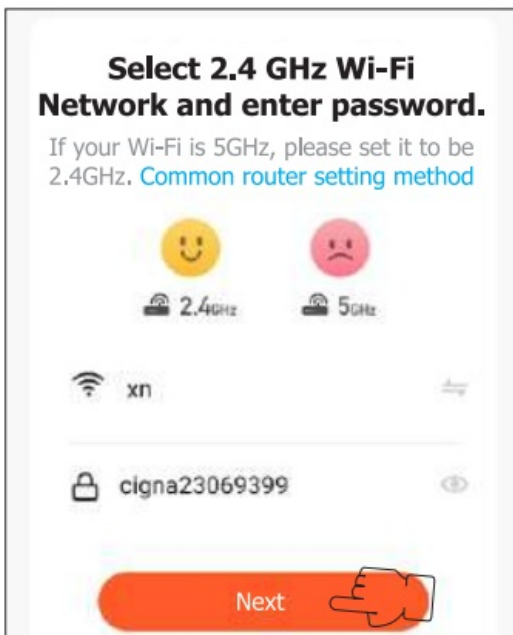
①



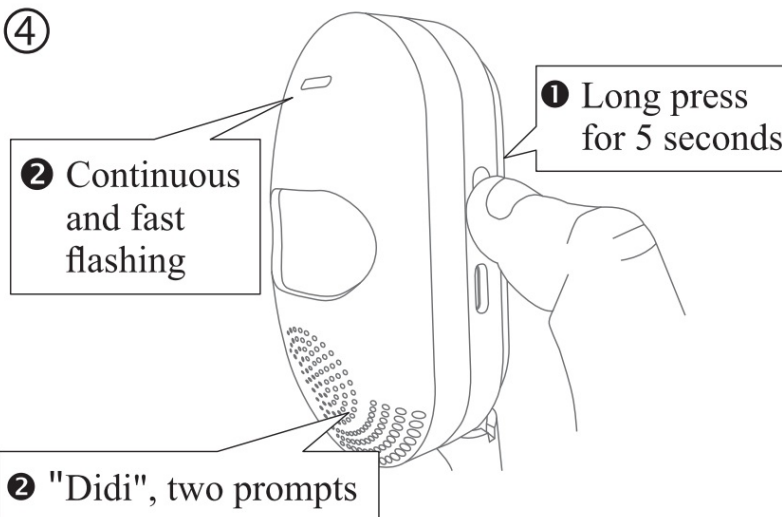
②



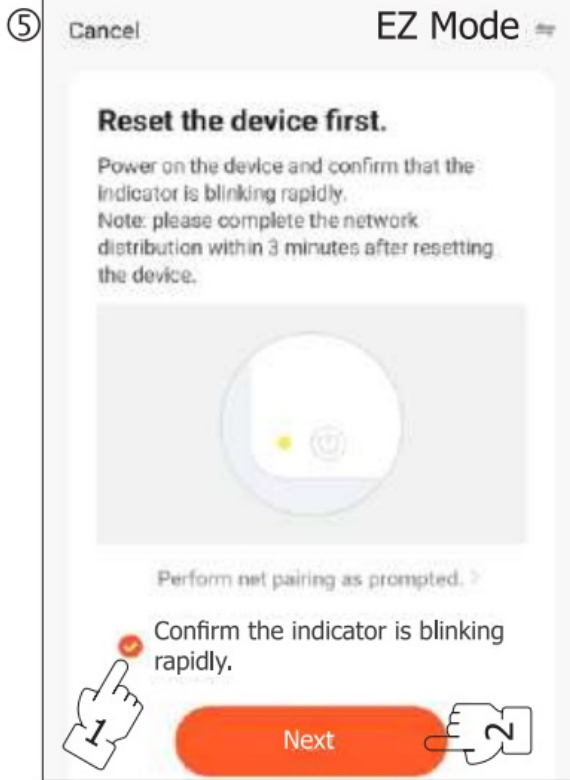
③



④



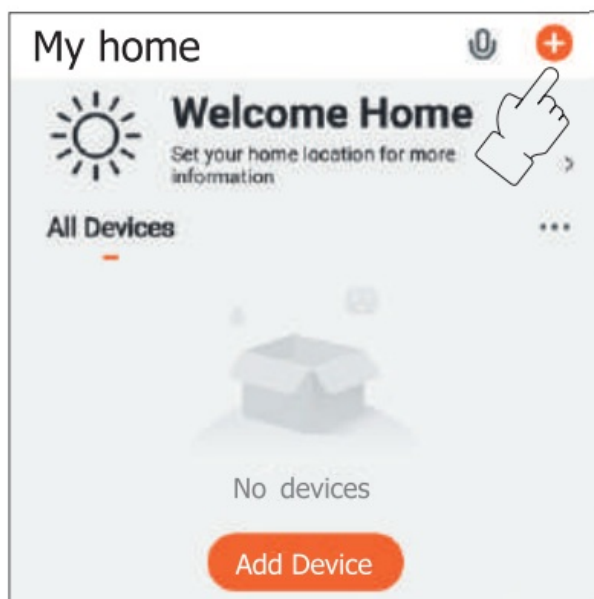
Observe whether the LED light flashes quick!). If it is not flashing quickly, press and hold for 5 seconds.



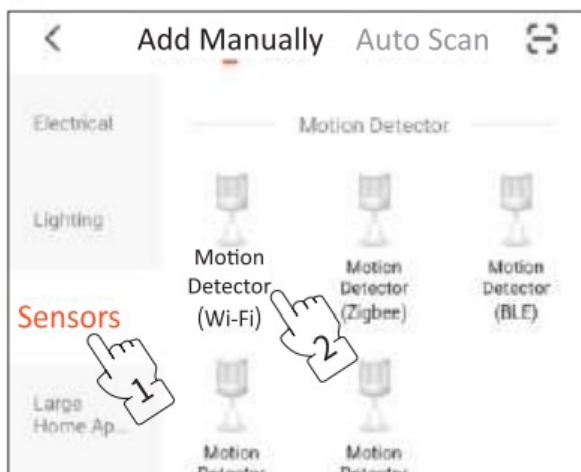
Connection Failed please select hotspot network configuration mode

## method 2: Hotspot distribution network

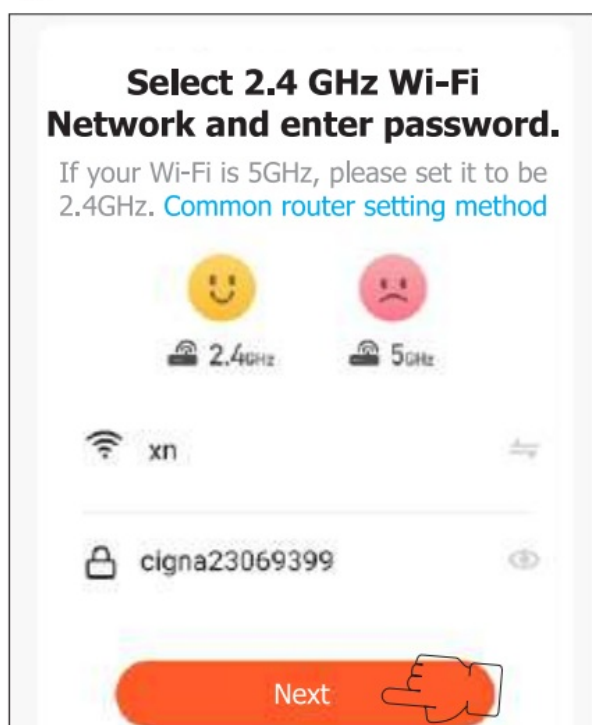
①



②



③





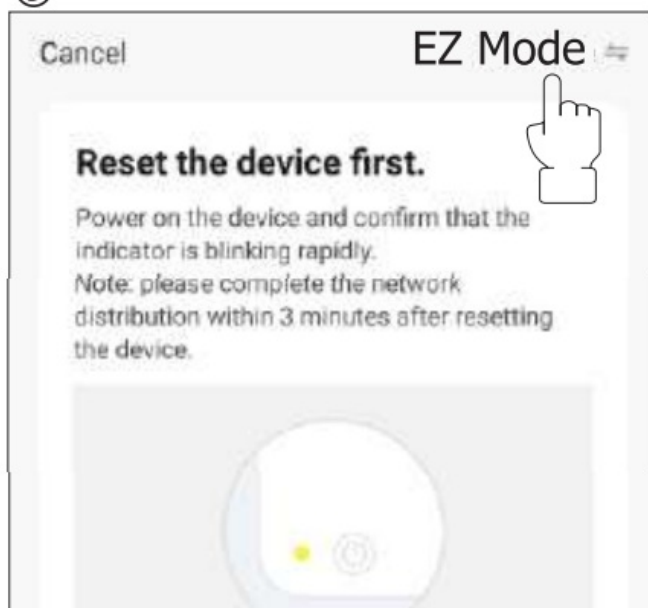
④

② Continuously flashing slowly

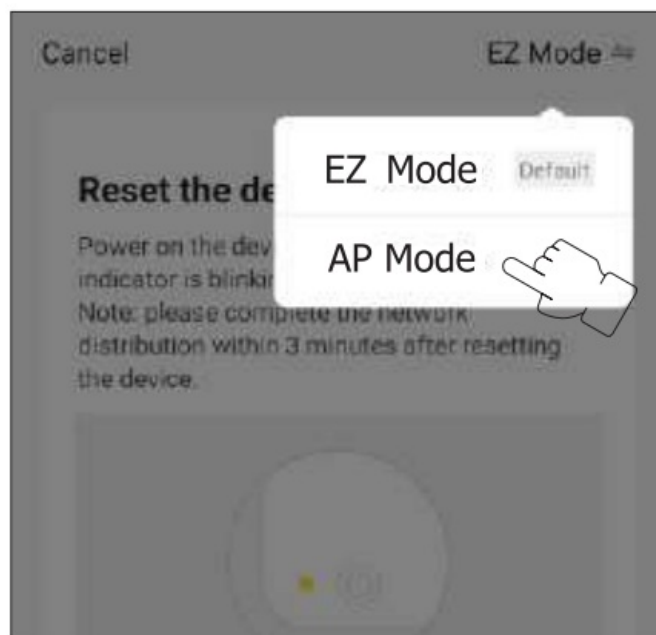
① Long press for 5 seconds

② "Didi", two prompts

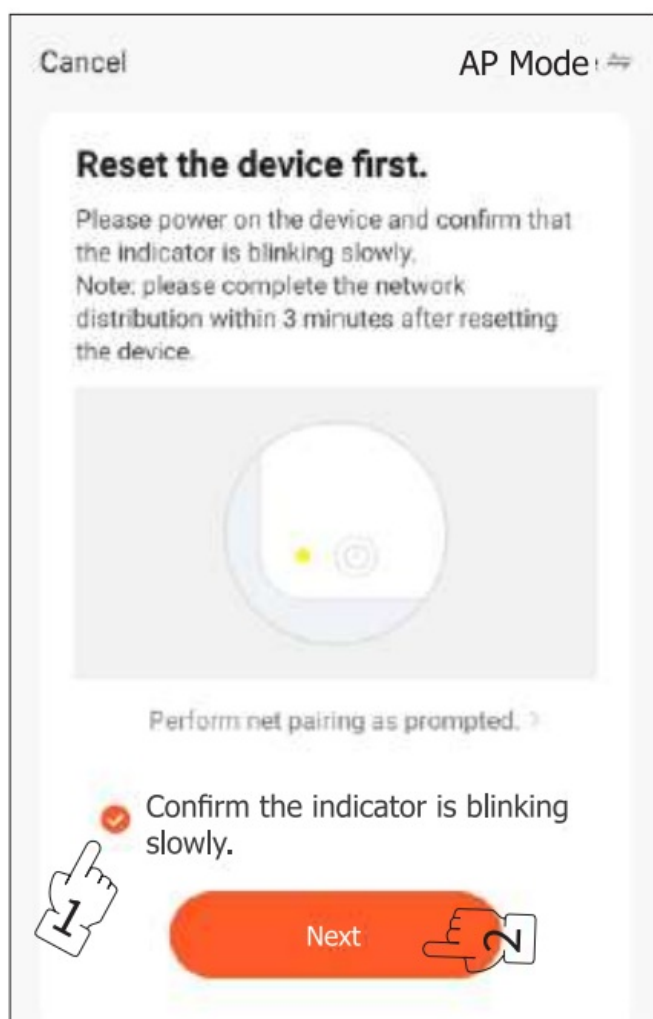
⑤



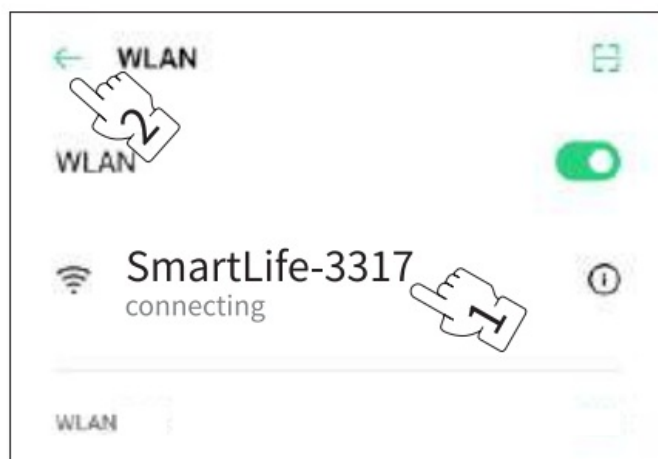
⑥



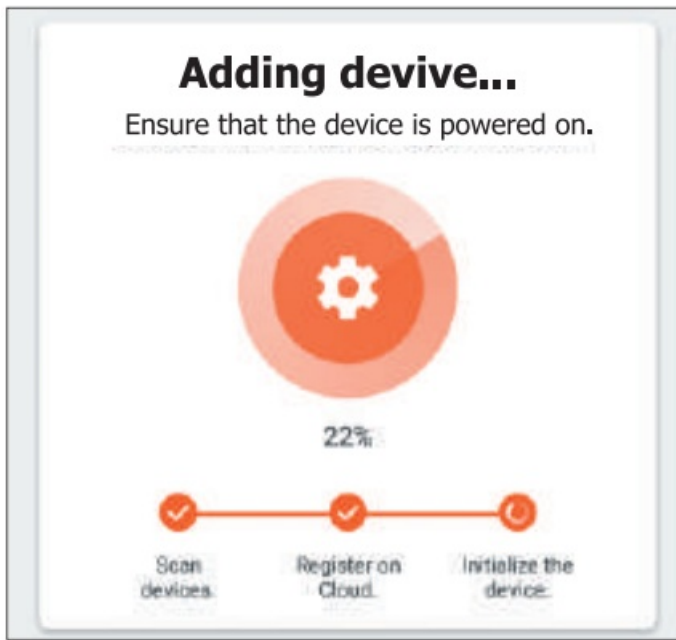
⑦



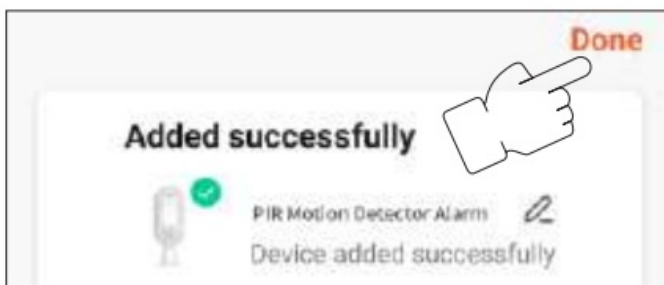
⑨



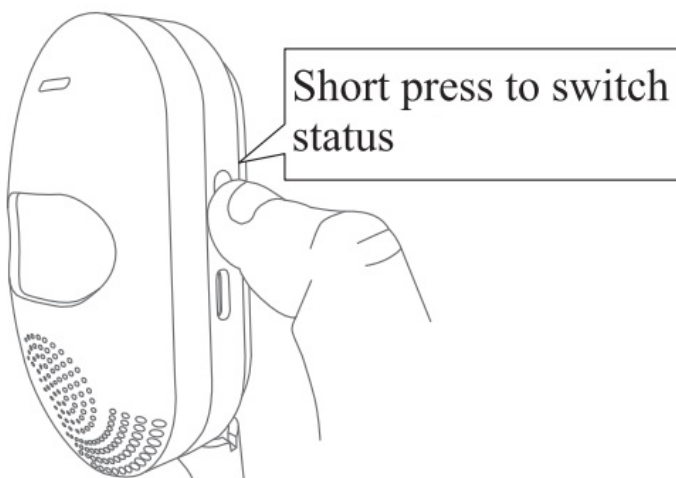
10



11



**working status selection**

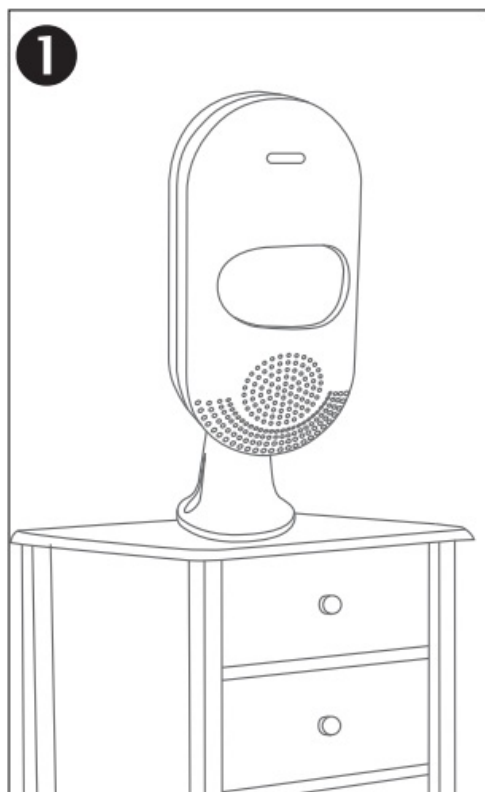


Prompt sound	Alarm lamp	Status
Di	Blink 1 time	Turn on sensor alarm
Didi	2 flashes	Turn off the sensor alarm

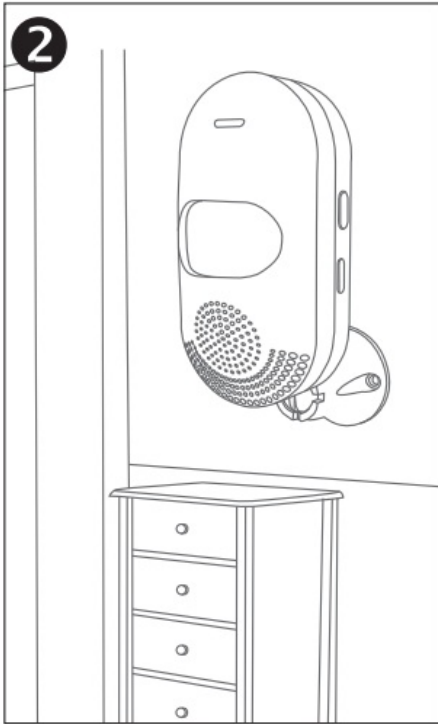
## installation

### 1. Installation method

place the table (recommended)



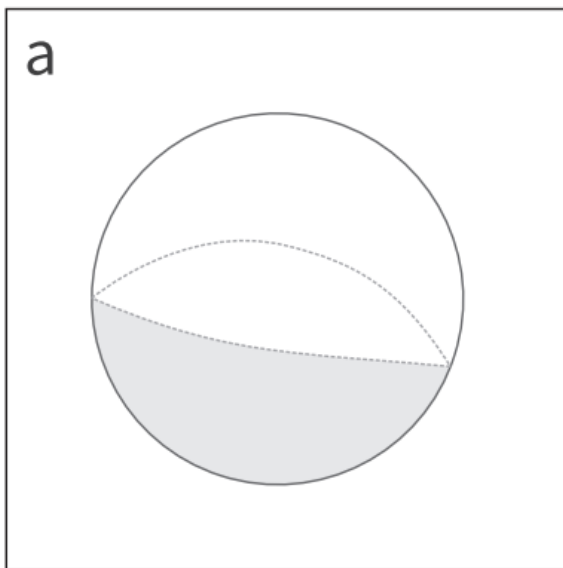
wall installation



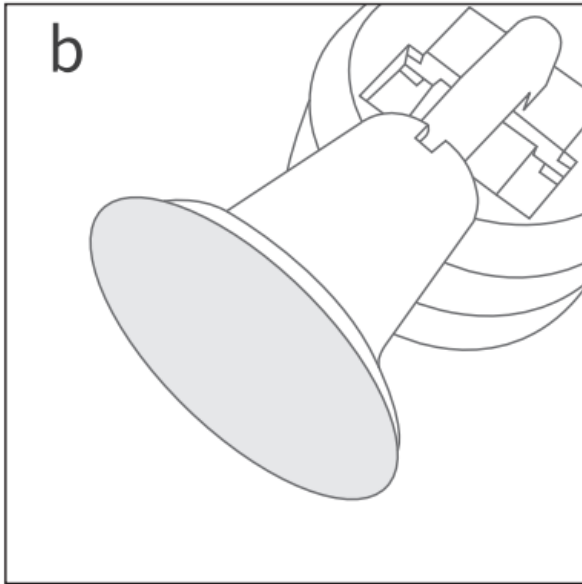
## 2. a fixed way

### 1. 0 3M double-sided tape fixed

Tear off one side of the 3M double-sided adhesive film

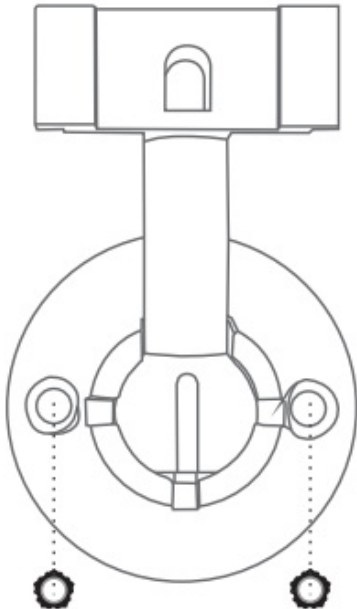


Attach to the bottom of the bracket

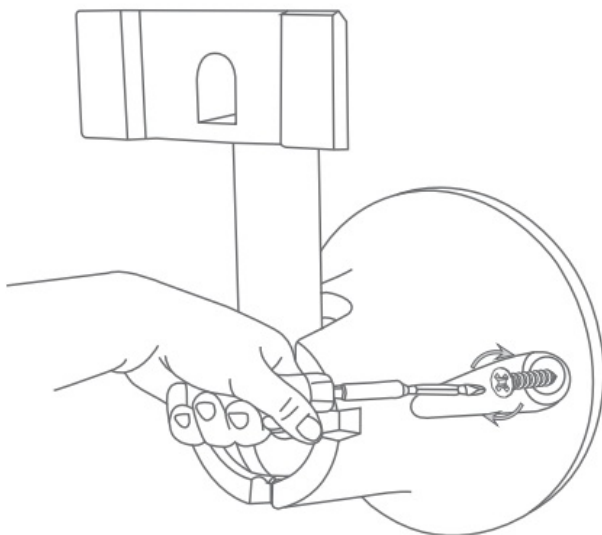


## 2. Screw fixation

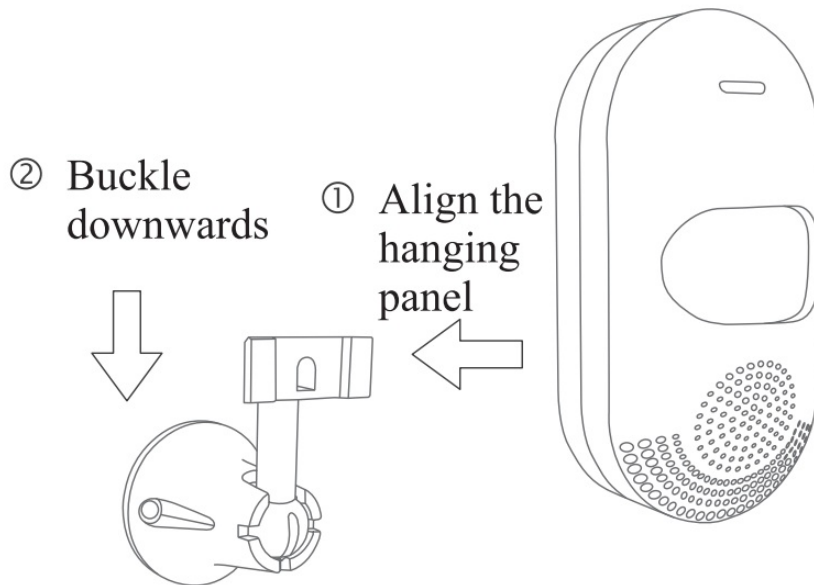
**a.** Draw a line on the installation position to make the positioning hole. Then hammer it into the expansion pipe as the figure below:



**b.** Screw in the screws with a cross screwdriver in clockwise direction as the figure below:



c. Shown as the figure below



### Common problem

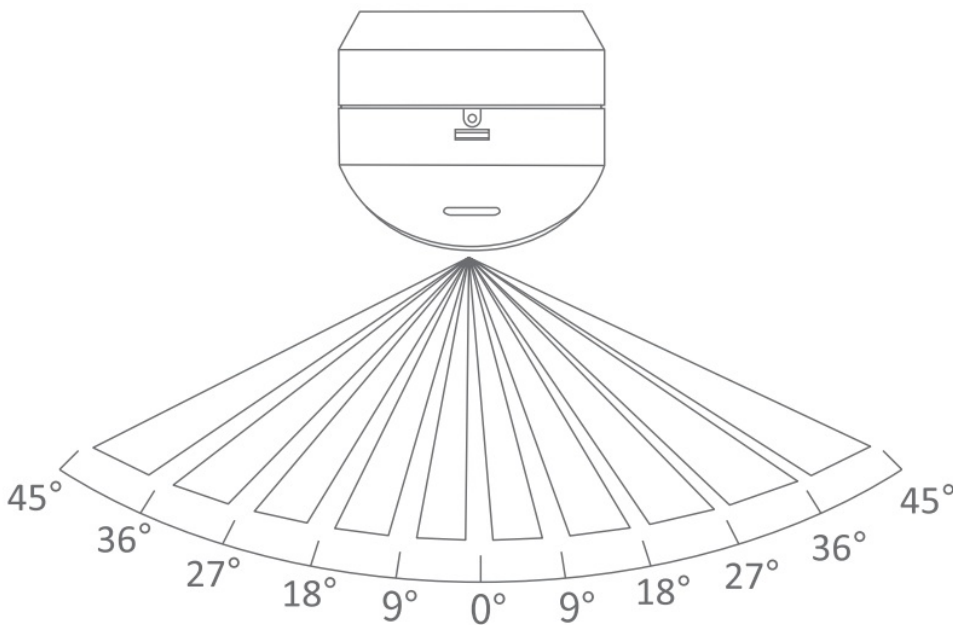


When the battery is dead and the USB is Apowered, the alarm does not sound (or makes a sinling sound), just remove the battery and reconnect the USB cable.



When the power of the infrared detection alarm is lower than 20%, the APP will push a low-voltage alarm.

### Detection angle



### Technical Parameters

Main power supply: USB DCSV power supply Working voltage: 5V Standby current: 20mA Alarm current: 60mA  
Alarm sound: <90dB Detection distance: 6 – 9m (Affected by the environment) Backup battery: 2 AAA batteries  
Working temperature: -10°C — .50°C Anti-pet interference: Below 25KG WiFi standard: IEEE 802.11 b 2.4GHz

## Documents / Resources



[WiFi Independent PIR Infrared Detection Alarm](#) [pdf] User Manual  
Independent PIR Infrared Detection Alarm, Independent PIR Detection Alarm, Infrared Detection Alarm, Detection Alarm, Alarm

[Manuals+](#).