



## Wi-Tek WI-IOT100 Cloud IOT Controller Installation Guide

[Home](#) » [Wi-Tek](#) » [Wi-Tek WI-IOT100 Cloud IOT Controller Installation Guide](#) 

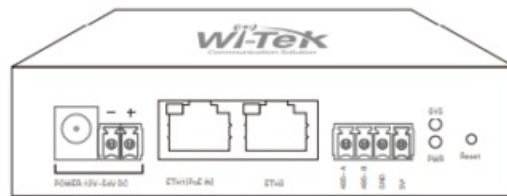


**WI-IOT100**  
**Cloud IOT Controller**

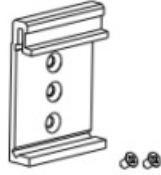
### Contents

- [1 Package Contents](#)
- [2 Hardware Introduction](#)
- [3 Installation](#)
- [4 Application](#)
- [5 Management](#)
- [6 Warranty Card](#)
- [7 Documents / Resources](#)
  - [7.1 References](#)
- [8 Related Posts](#)

### Package Contents



1 × Controller



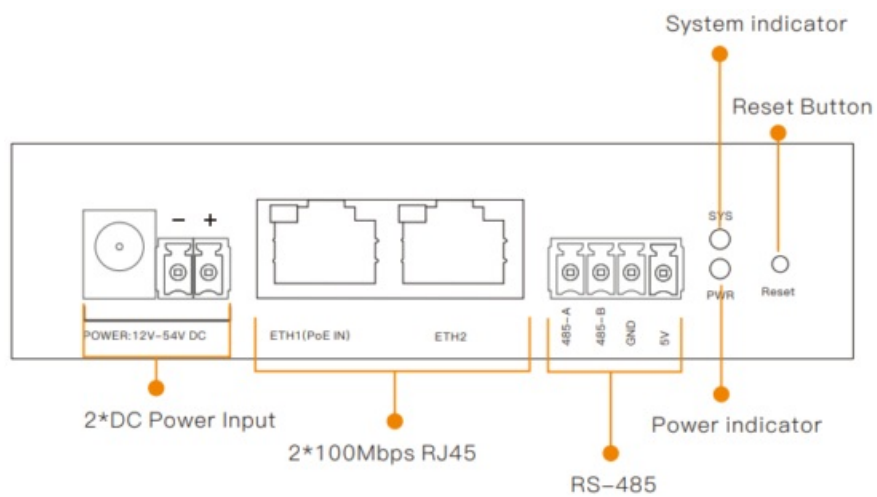
1 × DIN-Rail Accessories



1 × Quick Installation Guide

## Hardware Introduction

- WI-IOT100



**Note:** The two DC power supplies cannot be connected at the same time.

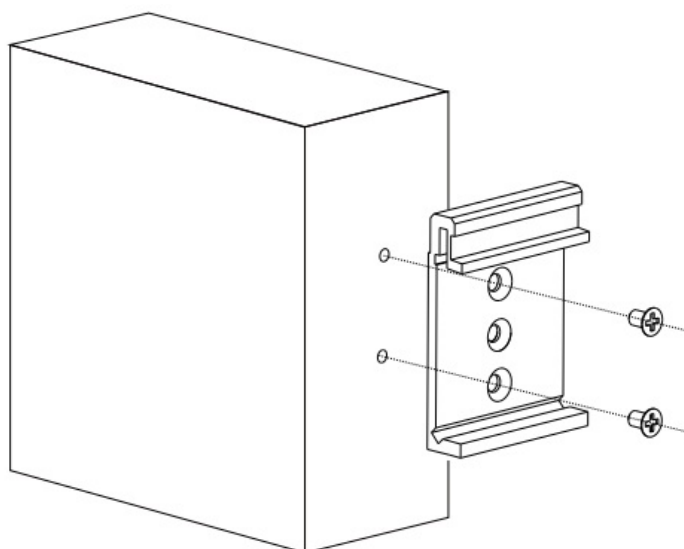
Button	Description
Reset	Short press 1~3 seconds: Reboot the device. Long press over 5 seconds: Restore the factory default configuration.

## LED indicator

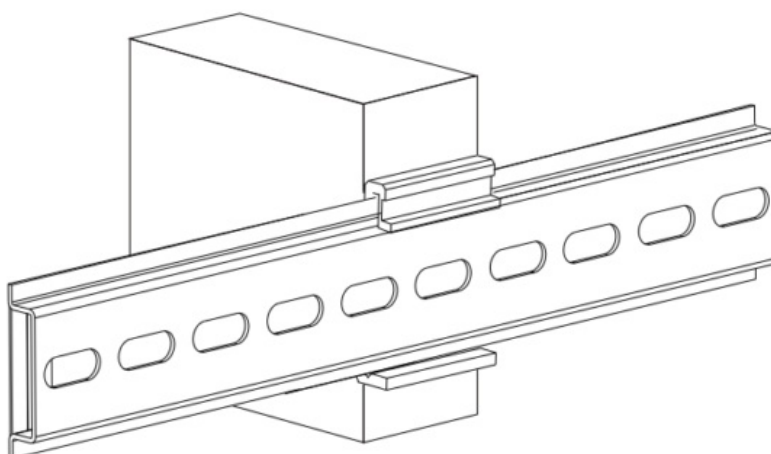
LED Indicators	Status	Status
PWR	Steady on	Steady on
	Off	Off
SYS	Blinking	Blinking
	Off	Off
	Steady on	Steady on
ETH1/ETH2	Blinking	Blinking
	Off	Off

## Installation

- Fix the DIN-rail bracket to the backside of the device with screws.

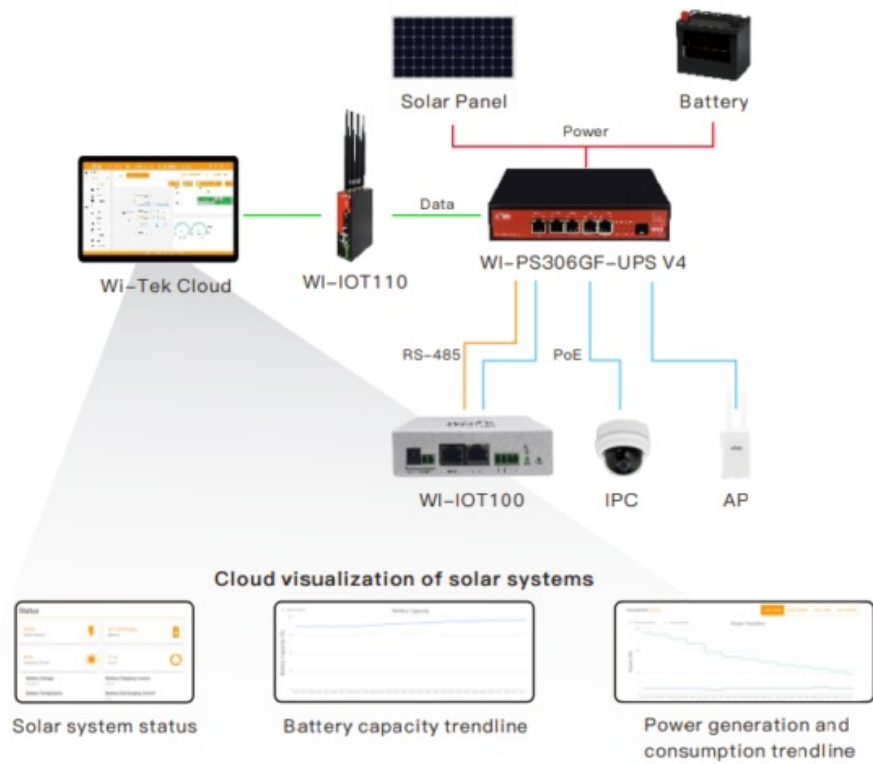


- Install the device to the DIN rail.



- After the above steps are completed, connect the Ethernet cable and power on the device.

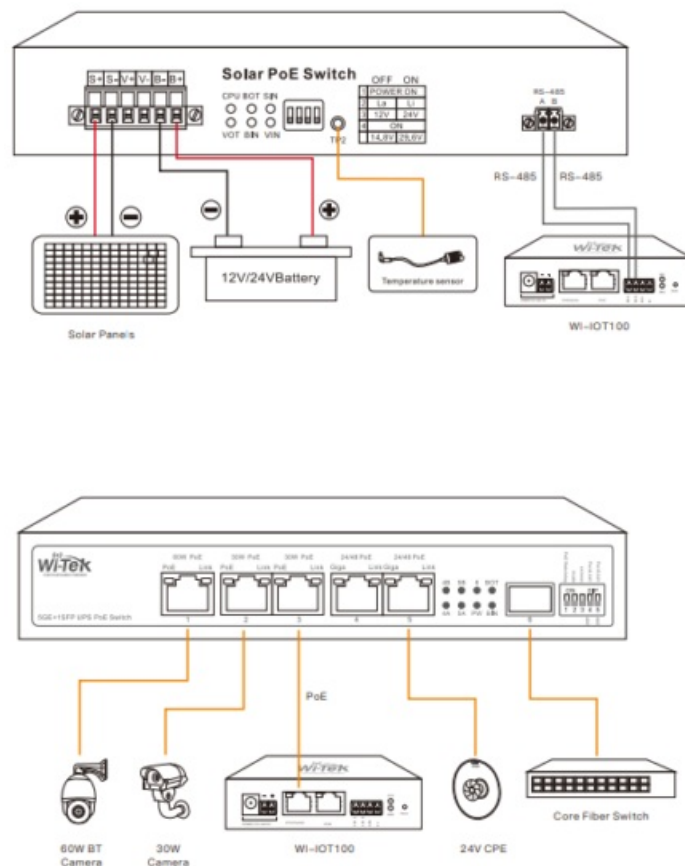
## Application



## Management

- Connect the cloud IoT controller RS-485 to Solar power PoE switch RS-485 by two copper cables, and connect ETH1(PoE IN) to the switch PoE port by the Ethernet cable.

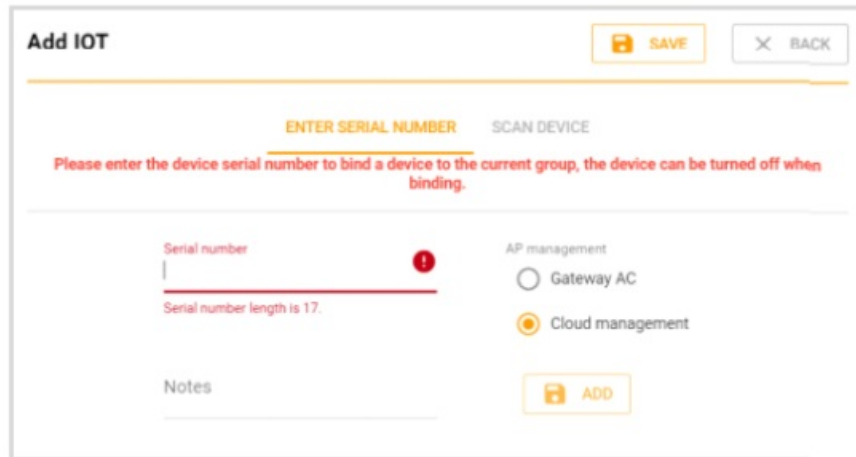
**Note:** The cloud IoT controller's default mode is solar mode, there is no need to configure it in the WEB if it is used in the solar system scenarios, you can go to Step 3 and manage on the cloud.



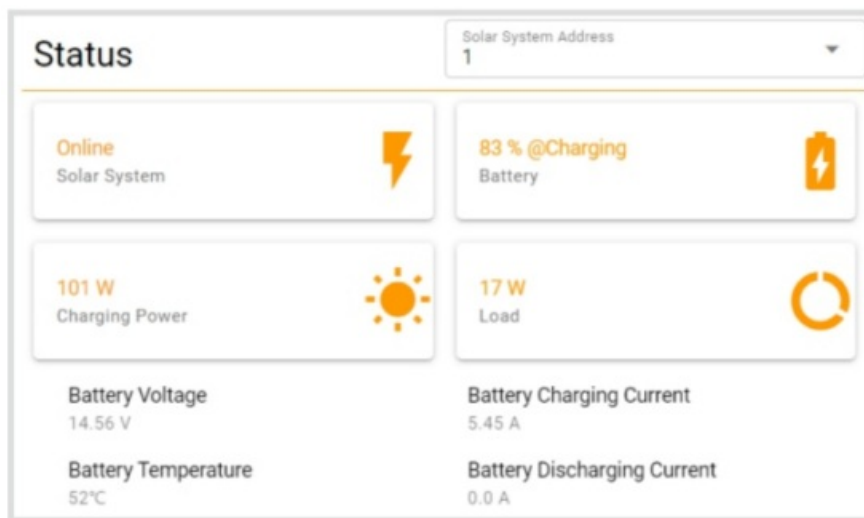
## Cloud management

Make sure your controller is networked. Enter <https://cloud2.wireless-tek.com> in the browser and log in to the

cloud, add a network, or select the existing network. Go to “Device > IoT”, click < ADD DEVICE >, enter the cloud IoT controller’s SN, and click < ADD >. Wait a moment, you can find it in the device list and view it in “Topology”.



The solar system status and power & battery capacity trendline are on the device detail page.



- **Login to the management WEB**

Connect your computer to the cloud IoT controller with an Ethernet cable, and check your computer’s IP address is on the same subnet as the controller.

**Note:** The controller’s default fallback IP 192.168.1.88 is invalid if there is a DHCP server in the network. It will be reassigned to a new IP address by the DHCP server (such as a Router in the network). Please check the new IP address on the DHCP server and use it to log in to WEB, The default password is 12345678.



## Warranty Card

Username	
Address	
Telephone No.	
Purchase Shop	
Purchase Address	
Product Model No.	
Purchase Time	
Serial No.	
Dealer Signature	

- If the product defects within three months after purchase, we will provide you a new product of the same model.
- If the product defects within the three-year warranty period, we will provide the professional maintenance service.
- Proof of purchase and a complete product serial number are required to receive any services guaranteed as part of the limited warranty.
- Any other defects that are not caused by workmanship or product quality, such as natural disasters, water damage, extreme thermal or environmental conditions, sticker damaged, warranty card losing will disqualify the product from limited warranty.



Technical Support  
<http://support.wireless-tek.com/>



Company Website  
<http://www.wireless-tek.com/>



## Cloud Management

<https://app-gateway.wireless-tek.com/product-library/shareLink>

Wireless-Tek Technology Limited  
Address: Biaoan Technology Building 402, Bao'an street,  
Baoan District, Shenzhen City, Guangdong, China  
Website: [www.wireless-tek.com](http://www.wireless-tek.com)  
Tel :86-0755-32811290  
Email :[saes@wireless-tek.com](mailto:saes@wireless-tek.com)  
Technical Support:[tech@wireless-tek.com](mailto:tech@wireless-tek.com)



## Documents / Resources

	<a href="#">Wi-Tek WI-IOT100 Cloud IOT Controller</a> [pdf] Installation Guide WI-IOT100, WI-IOT110, WI-IOT100 Cloud IOT Controller, WI-IOT100, Cloud IOT Controller, IOT Controller, Controller
--	---

## References

- [Test and Measurement Equipment | Tektronix](#)
- [Wireless-Tek Technology Limited.](#)
- [Wi-Tek Cloud](#)
- [User Manual](#)

[Manuals+](#), [Privacy Policy](#)

This website is an independent publication and is neither affiliated with nor endorsed by any of the trademark owners. The "Bluetooth®" word mark and logos are registered trademarks owned by Bluetooth SIG, Inc. The "Wi-Fi®" word mark and logos are registered trademarks owned by the Wi-Fi Alliance. Any use of these marks on this website does not imply any affiliation with or endorsement.