



Wi Fi Tiny Clock Wireless Security Camera User Manual

[Home](#) » [Wi-Fi](#) » **Wi Fi Tiny Clock Wireless Security Camera User Manual** 

Contents

- [1 Wi Fi Tiny Clock Wireless Security Camera](#)
- [2 Quick guide of Wi-Fi camera function](#)
- [3 Overview](#)
- [4 In the box](#)
- [5 Product structure of Tiny Clock](#)
- [6 Wi-Fi Camera Connection Setting](#)
- [7 Set camera name and private code](#)
- [8 APP introduction](#)
- [9 Specification](#)
- [10 FAQ](#)
- [11 Documents / Resources](#)
- [12 Related Posts](#)



Wi Fi Tiny Clock Wireless Security Camera



Version : April, 2021

Tiny Clock

Size: 109x39x46mm



Tiny Clock

Size: 112x40x43mm



Quick guide of Wi-Fi camera function

1. Download Free App <TinyCam Pro> from App Store or Google Play.

Tips: Please allow "TinyCam Pro" to access smartphone location while using the APP.

2. Take off back cover and pull out the battery insulator → Insert micro SD card → Press the ON/OFF key, wait for 1 minute

(Power indicator and Wi-Fi indicator is flashing regularly.);

Tips: After above operation, please put on back cover and plug power adapter for long time use.

3. Enter smartphone settings -> Search and connect device's Wi-Fi named: AIS ,wait till phone status bar

appear Wi-Fi symbol '9';

4. Enter APP, tap below "(±)" icon → LAN search → Tap the found device → Tap Add → Camera Online then;
Tips: This step = P2P mode, can check video locally when without Wi-Fi.
5. Press **setting** icon on the right corner of camera → WiFi Config → Select local Wi-Fi (SSID) → Input password -> Tap Next;
6. Quit APP , wait 30 seconds (device restart automatically) and connected with set Wi-Fi (Wi-Fi indicator is solid);
7. Enter APP to check live video locally or remotely anywhere.

P.S.: Contact local dealer for tutorial video setting up.

Overview

These two fashion designed tiny clock, local temperature and humidity info which auto-sync from internet once connected with Wi-Fi; The most important, it is integrated with a powerful 1080p smart invisible Wi-Fi camera comes with 6 meters powerful night vision.

First, it can be used for watching live streaming video day and night , or taking photo and video by APP in smart-phone remotely after Wi-Fi connected; Also, it supports Point to Point (P2P) function, easily connected for local live video without Wi-Fi.

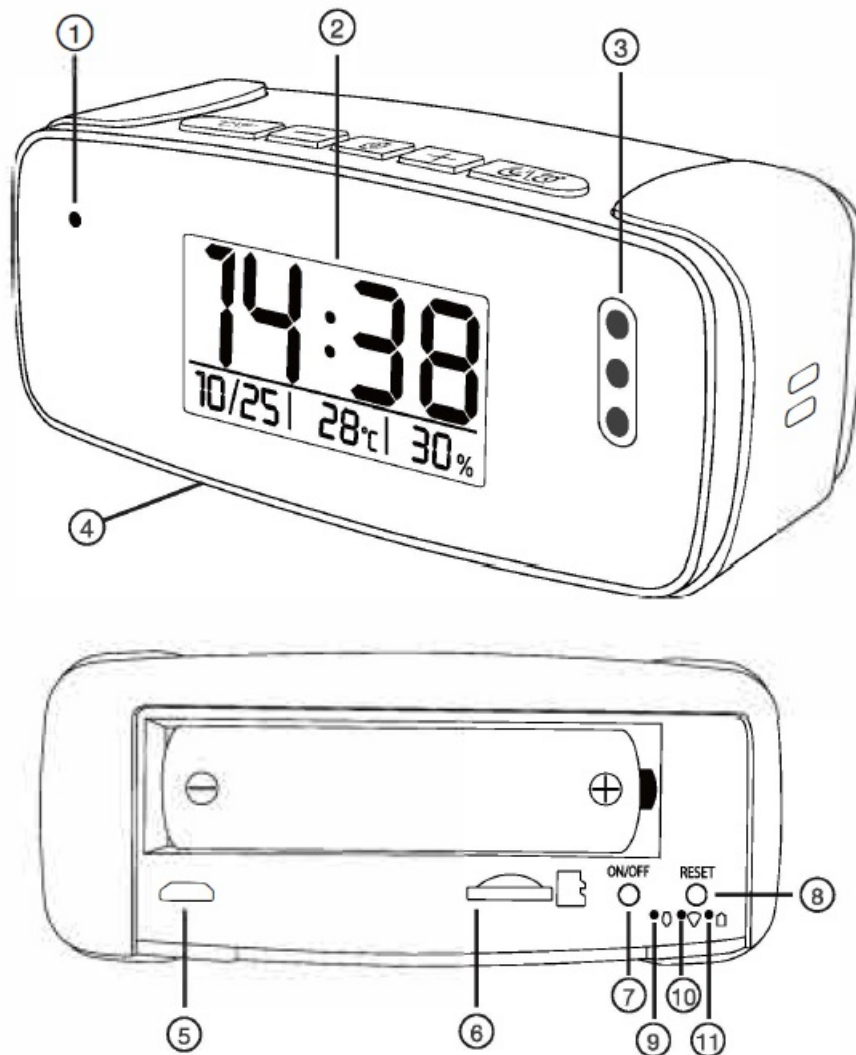
Second, it also support motion detect alarm function, cycle recording and work when charging.

- **Usages:** Nanny camera, Home/ Shop/ Office/ Warehouse surveillance camera.
- **Warning :** " illegal use is not allowed! Or, there will be consequences to bear!"

In the box

- 1 x Camera Unit
- 1 x 5V2A power adapter
- 1 x Micro SD Card Reader
- 1 x USB Cable
- 1 x User Manual

Product structure of Tiny Clock

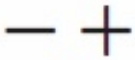


1. Camera
2. Display
3. Invisible night vision leds (furn ON/OFF Automatically)
4. Device UID & QR code
5. USB port
6. Micro SD card slot
7. ON/OFF Key
8. Reset Key
9. Power indicator
10. wi-Fi indicator
11. charging indicator

Clock part of Tiny Clock 1 :



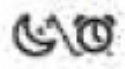
- Short press = Centigrade degree to Fahrenheit
- Long press = Turn off/ on display



- 12h / 24h



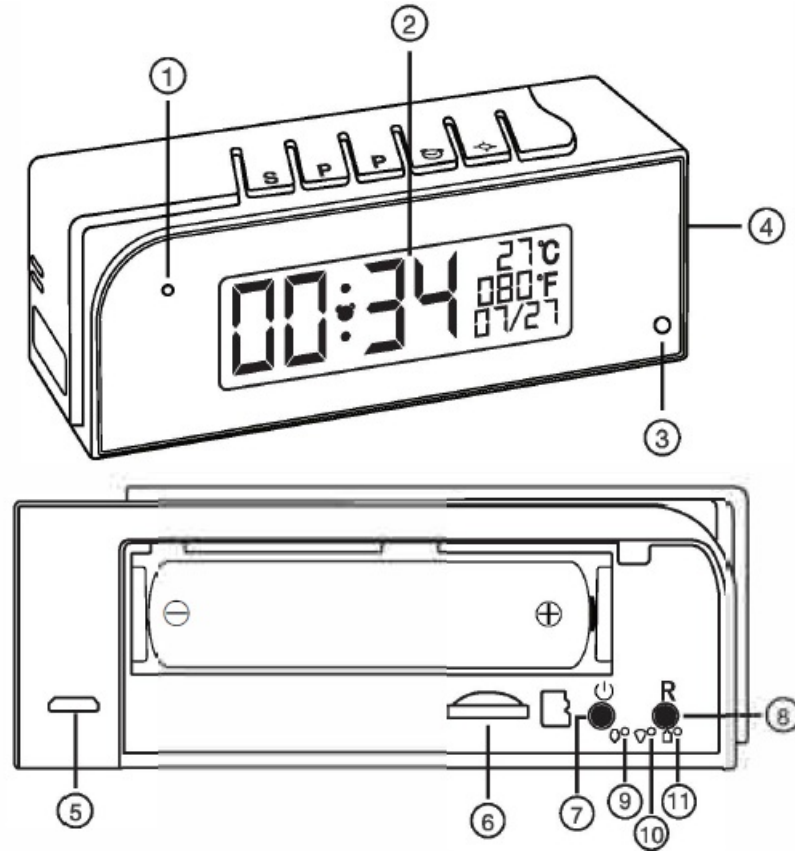
- Time set



- Short press = Snooze

- Long press = Turn off clock setting

Product structure of Tiny Clock 2



1. Camera
2. Display
3. Invisible night vision leds (turn ON/OFF Automatically)
4. Device UID & QR code
5. Support
6. Micro SD card slot
7. ON/OFF Key
8. Reset Key
9. Power indicator
10. wi-Fi indicator
11. Charging indicator

Clock part of Tiny Clock 2 :

- Time/Alarm set
- Hour/Month set / 12 vs 24Hour
- Minute/Day set / 12 vs 24Hour
- Alarm on/off

-+- Turn off/on display

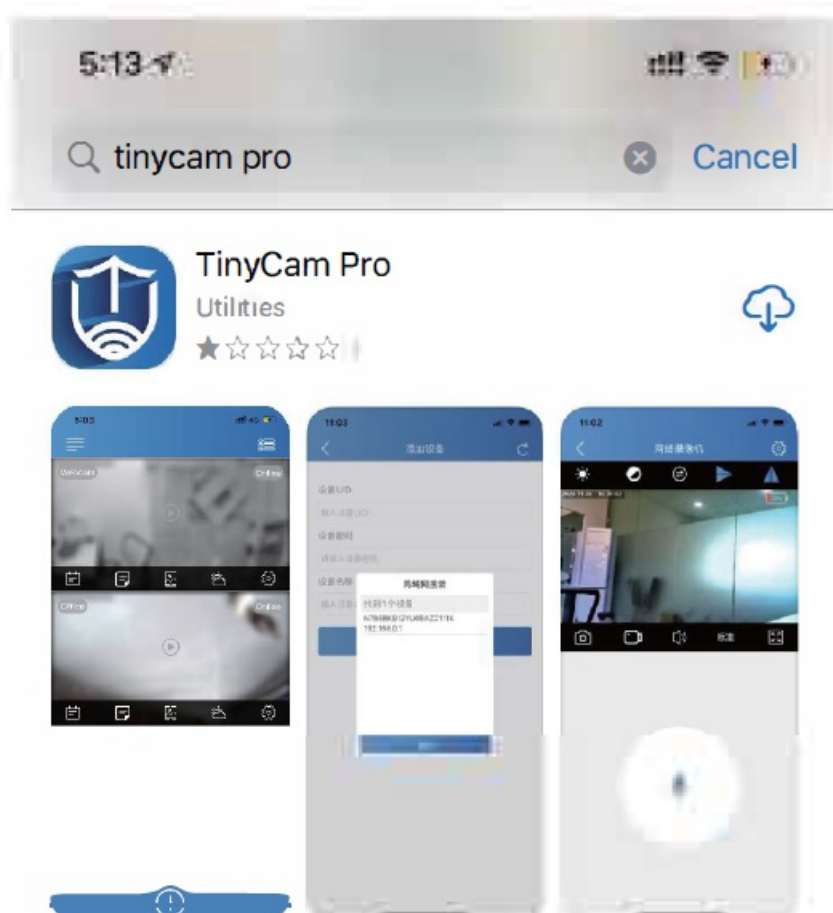
Tips: Local Time and Temperature info will be updated automatically every 2 hours after connecting to local Wi-Fi.

Wi-Fi Camera Connection Setting

• Step1: Download and install APP

Scan below QR code or search and download free APP named <TinyCam Pro> in Apple APP store, Google play or Electronic market, and install it;

Tips: Please allow “TinyCam Pro” to access your location while you are using the app(for syncing local weather info).



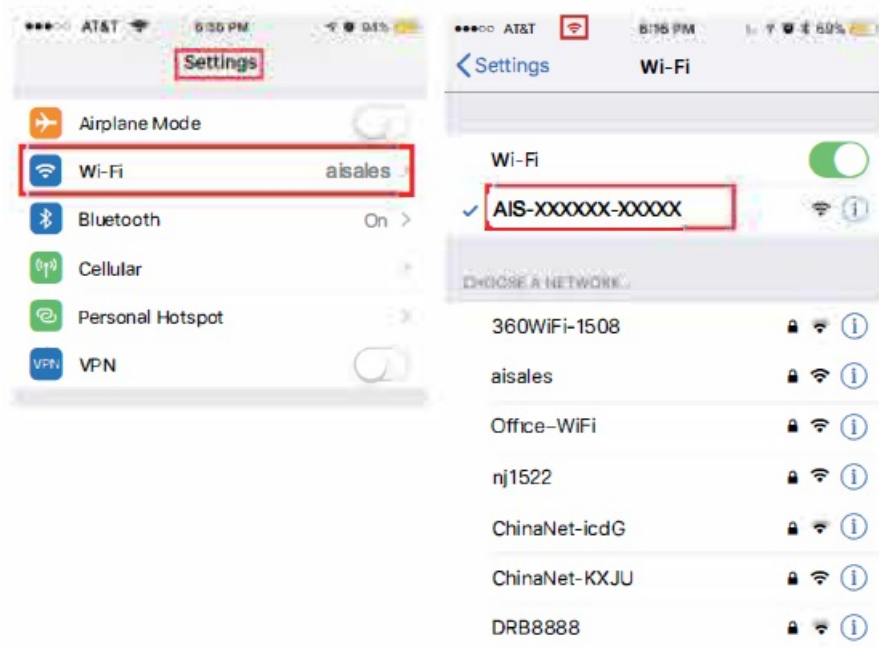
• Step 2: Take off back cover and pull out the battery insulator → Insert micro SD card → Press the ON/OFF

key, wait for 1 minute (Power indicator and Wi-Fi indicator is flashing regularly.);

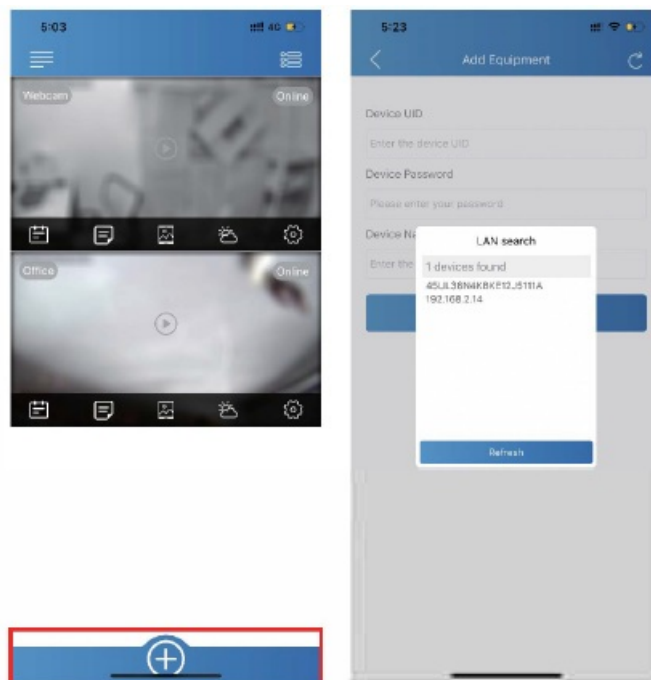
Tips: After above operation, please put on back cover and plug power adapter for long time use.

• **Step 3:** Connect Wi-Fi

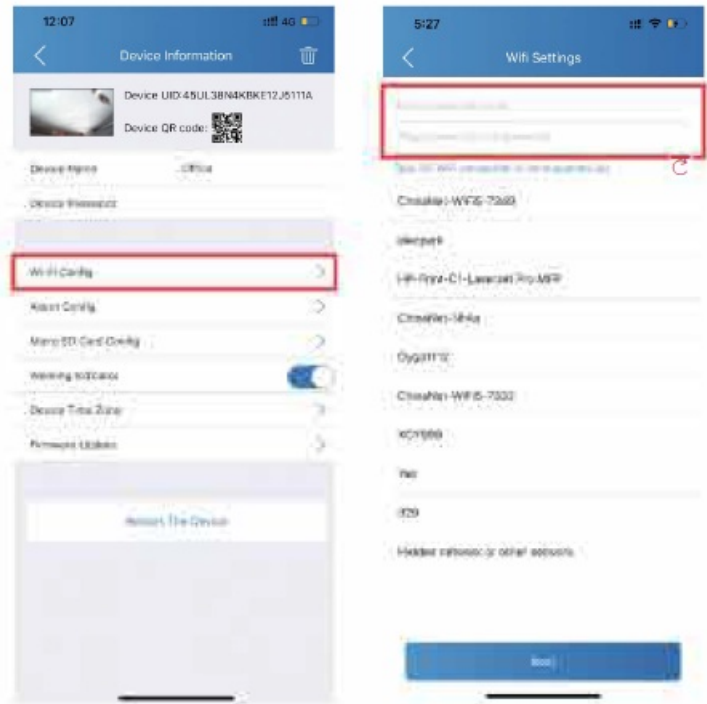
- Open smartphone settings, search and connect the device's wireless signal named "AIS", wait Wi-Fi connected, and phone status bar appear Wi-Fi symbol.



- Enter APP, tap below "(+)" icon -> LAN search-> Tap the found device -> Tap Add -> Camera Online then;



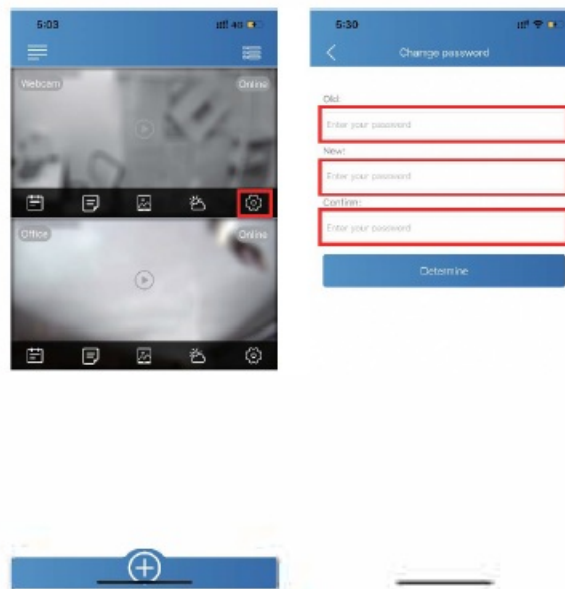
- Tap **setting** icon on the right corner of camera -> Wi-Fi Config-> Select local Wi-Fi (SSID) -> Input password -> Tap Next;



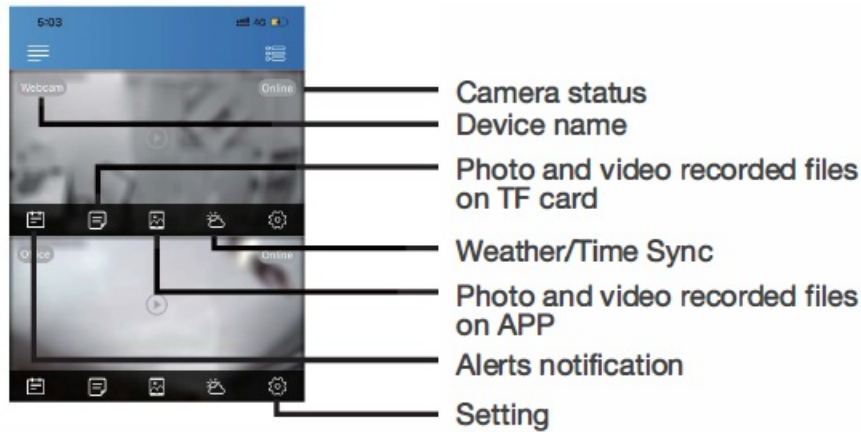
- Quit APP , wait 30 seconds (device restart automatically) and connected with set Wi-Fi (Wi-Fi indicator is solid) ;
- Enter APP and check live video locally or remotely anywhere.

Set camera name and private code

- **Set name:** Tap the **setting** after the camera, Input a new name (like Office ...) in Device Name;
- **Set new password:** Tap the **setting** after the camera, Tap Device Password → Old password = 123456.

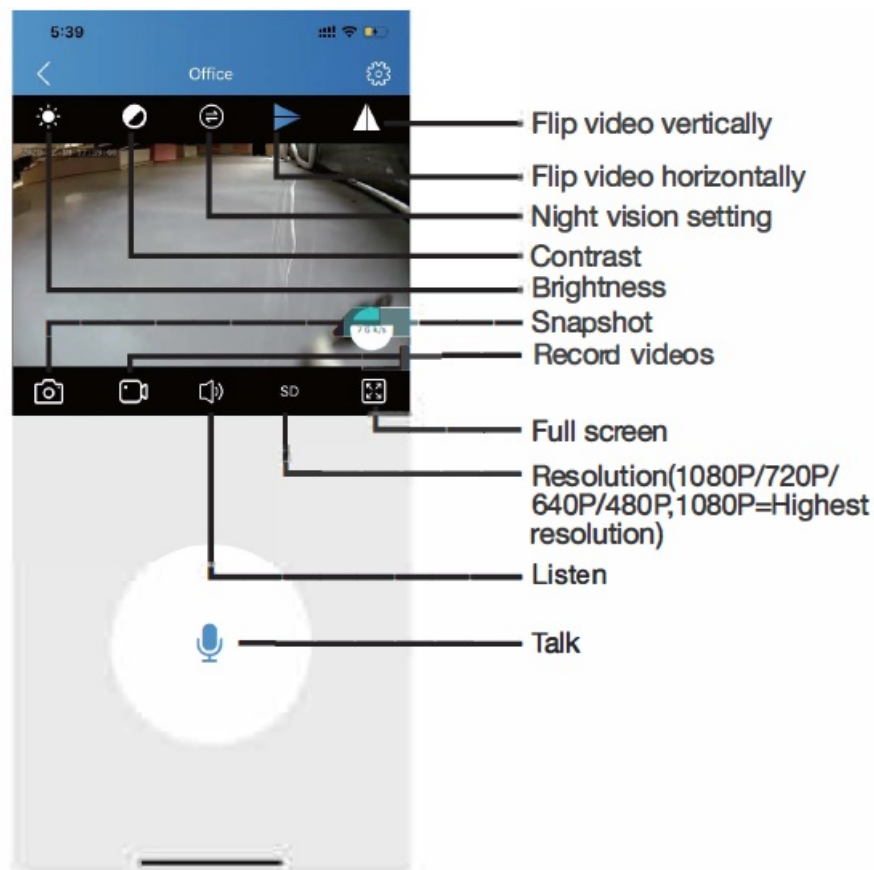


APP introduction



Tips:

- Please confirm phone setting has allowed TinyCam Pro App to access the location services;
- A TF card(Micro SD card) must be inserted for saving alerts pictures.



1. Share camera with others by QR code
2. Wi-Fi Config: Set camera to connect to local Wi-Fi
3. Alarm Config: Set motion detection sensitivity
4. Micro SD Card Record Config:
 1. Set SD card recordmode I
 2. Resolution /File length
5. Working Indicator: To turn on/off device's working led

6. Firmware Update: Update device's latest firmware by app



Specification

Resolution	1 Mega CMOS
Video pixel in phone	Max 1920'1080
Video pixel in card	1080'720
Frames	Max 25fps
Compressed format	H.264
View angle	120 Degree
Type of memory card	TF card>=Class 4/10 and HC marked
<u>Maximum capacity of memory card 128GB</u>	
PC operation system	Windows 7, 8 / Mac OS X
Play software	VLCPlayer/SMPlayer
Mobile phone operation system	Android/iOS
Web browser	IE7 and above,chrome,firefox
Power consumption	300MA/3.7V
Battery Capacity	Rechargeable 3000 mA
Recording	1 minute/ around 20MB
Working time in day time	Around 8 hours
Working time in night time	Around 3 hours
Charging time	3-4 hours
Power adapter	5V / 2A

FAQ

1. Q: Time display is not stable, always blinking?

A: It's with low battery, please charge it.

2. Q: Can't get device Wi-Fi signal?

A: Press reset key for 10 seconds and wait 1 minute.

3. Q: Live video not smooth and clear?

A: Select suitable resolution according to the real time network environment.

4. Q: Motion detect set and alarm?

1. Set motion detect sensitivity in App Setting > Alarm Config;
2. When motion detected, camera will push a alarm message to your phone and take one picture for checking in the APP [Page 16 -Alert notification]. {A micro sd card MUST be inserted for saving alarm pictures)

5. Q: Micro SD card instruction?

1. Set motion detect sensitivity inA pp Setting>A alarm Config;
2. Once device is connected to Wi-Fi, can set SD management inA pp Setting > Micro SD Card Config.

6. Q: How to play micro SD card video?

1. Use a card reader to read and play;
2. Use APP to play back [Page 16 – TF card recorded files];
3. Play back in good speed network.

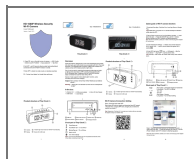
7. Q: Forget camera password, or item goes abnormal?

A: Turn on camera and wait for 1 minute, press reset key around 10 seconds till back indicators off to restore the factory default. Camera restarts and get ready again in 1 minute.

8. Q:A ny operation video demo of the camera for setting up?

A: Please contact local dealer for video guide.

Documents / Resources



[Wi Fi Tiny Clock Wireless Security Camera](#) [pdf] User Manual

Tiny Clock Wireless Security Camera, Tiny Clock, Wireless Security Camera, Security Camera , Clock Security Camera, Camera, Clock Camera, Tiny Clock Camera, Tiny Camera